



# Patient-Centered Primary Care Home Program Update

September 2020

## Resources and technical assistance for the 2020 PCPCH Recognition Standards

The 2020 Recognition Criteria Technical Specifications and Reporting Guide (TA Guide) has been released and is available on the PCPCH website along with additional resources to help practices prepare to attest under the revised model. All practices applying or re-applying for PCPCH recognition after January 1, 2021 will be required to attest under the 2020 recognition standards. *(Note: Practices are not required to re-apply in January of 2021 unless their 2 year re-application due date falls in this month).*

The resources described below can all be found on the [Resources and Technical Assistance](#) webpage of the [PCPCH website](#).

### 2020 TA Guide

The [Oregon Health Authority Patient-Centered Primary Care Home 2020 Recognition Criteria Technical Specifications and Reporting Guide](#) (TA Guide) contains a complete description of the recognition criteria under the 2020 PCPCH model, technical specifications for each standard, and additional updates, information, and resources. All practices applying or re-applying for PCPCH recognition after January 1, 2021 are encouraged to read this document.

### 2020 Recognition Standards summary resources

The following resources may be helpful in understanding the upcoming changes to the PCPCH recognition standards:

**[PCPCH 2020 TA Guide: Revisions Summary](#)**: This document provides a brief overview of which standards have been revised or added, and other changes to the overall model.

**[PCPCH 2020 Quick Reference Guide](#)**: This table provides a visual summary of each measure in the model, the points available, and whether they have been revised since the last iteration of the PCPCH model (2017).

**[2020 Standards Self-Assessment Tool](#)**: This upcoming tool will allow practices to estimate what their points and tier level will be under the new model. It will also include the updated application questions which will go into effect on January 1, 2021. This tool will be made available on the website later this month.

### Webinar series and Q&A with PCPCH staff

The PCPCH program will be publishing recorded webinars twice per month over the next few months which detail the requirements for identified standards and measures in the 2020 PCPCH Recognition Standards. Following each webinar,

PCPCH program staff will host a live question-and-answer session via phone or video which will give practices and others an opportunity to ask specific questions about the standards and measures described in the webinar for that week. We invite all PCPCHs and interested stakeholders to join us for these TA opportunities.

**Below are the upcoming webinars for September and October, which can be found on the [Resources and Technical Assistance](#) webpage of the PCPCH Website. Future webinars will be announced soon!**

#### **PCPCH 2020 Recognition Standards Overview**

- Webinar recording published: September 18, 2020
- <https://attendee.gotowebinar.com/recording/8192150386418796547>

#### **PCPCH Standard 1.A In-Person Access**

- Webinar recording published: September 28, 2020
- Live Q&A Session: October 2, 2020 at 11:00 AM
- <https://www.zoomgov.com/j/1609902361?pwd=a2Q4Wkp2VGExSnYraGJ4L3gvNEhFZz09>
- Meeting ID: 160 990 2361
- Passcode: 578549

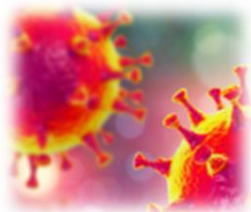
#### **PCPCH Standard 1.G – Alternative Access (new standard)**

- Webinar recording published: October 12, 2020
- Live Q&A Session: October 16, 2020 at 11:00 AM
- <https://www.zoomgov.com/j/1609902361?pwd=a2Q4Wkp2VGExSnYraGJ4L3gvNEhFZz09>
- Meeting ID: 160 990 2361
- Passcode: 578549

#### **PCPCH Standard 2.A – Performance and Clinical Quality & PCPCH Standard 2.E – Ambulatory Sensitive Utilization**

- Webinar recording published: October 26, 2020
- Live Q&A Session: October 30, 2020 at 11:00 AM
- <https://www.zoomgov.com/j/1609902361?pwd=a2Q4Wkp2VGExSnYraGJ4L3gvNEhFZz09>
- Meeting ID: 160 990 2361
- Passcode: 578549

## **PCPCH COVID-19 considerations**



PCPCH program leaders and staff understand the impact of COVID-19 on our primary care system and are proactively taking steps to ensure that challenges due to COVID-19 are being considered as practices apply or re-apply for PCPCH recognition. The PCPCH program has published a supplement to the 2017 Technical Assistance Guide which includes alternative technical specifications for specific standards that may be more difficult for a practice to meet due to COVID-19.

All practices applying or re-applying for PCPCH recognition before December 2020 are encouraged to review this supplemental document titled [PCPCH 2017 TA Guide COVID-19 Considerations](#) prior to submitting a renewal PCPCH application. The document is available on the [PCPCH Program Website](#) under “Program Updates & Recent News.”

In January 2021, the PCPCH program will implement revised PCPCH recognition standards. All practices applying or re-applying for PCPCH recognition after January 2021 must apply under the revised standards. Alternative technical specifications for the revised standards are included in the [2020 Recognition Criteria Technical Specifications and Reporting Guide](#).

## National Diabetes Prevention Program

September 23, 12:00 - 1:00 pm



How can you help your patients avoid developing diabetes? Join this webinar to learn more about the role your clinic can play.

- **September 23, 2020, noon-1 p.m.**
- **Register here:** <https://attendee.gotowebinar.com/register/1656575200840542477>
- **Audience:** Providers, practices, health systems
- **Contact:** Sarah Wetherson ([sarah.e.wetherson@dhsoha.state.or.us](mailto:sarah.e.wetherson@dhsoha.state.or.us))

## Webinar recording: addressing food insecurity during COVID-19



On 6/12, the Transformation Center hosted the webinar, “Addressing Food Insecurity during COVID-19.” This webinar provided information about current food resources available throughout Oregon during COVID-19 to address the food insecurity needs of Oregonians. To view a recording of the webinar, click here:

<https://attendee.gotowebinar.com/register/836249369035991566>

Contact: Tom Cogswell ([thomas.cogswell@dhsoha.state.or.us](mailto:thomas.cogswell@dhsoha.state.or.us))

## Questions?

We are here to help! Contact us at [PCPCH@dhsoha.state.or.us](mailto:PCPCH@dhsoha.state.or.us).

## About the Patient-Centered Primary Care Home Program

Patient-Centered Primary Care Homes (PCPCH) are health care clinics that have been recognized by the Oregon Health Authority (OHA) for their commitment to providing high quality, patient-centered care. The PCPCH Program administers the application, recognition, and verification process for practices applying to become Patient-Centered Primary Care Homes. The program is also working with stakeholders across Oregon to support adoption of the primary care home model. For more information visit [www.PrimaryCareHome.oregon.gov](http://www.PrimaryCareHome.oregon.gov).

*The mission of the PCPCH Program is to be a trusted partner in primary care, collaborating with stakeholders to set the standard for transformative, whole-person, and evidence-based care.*