

---

# Oregon Health Authority Health Systems Division Behavioral Health

Presented to  
Innovative Care for Behavioral Health & Substance Use Disorders  
October 30, 2019

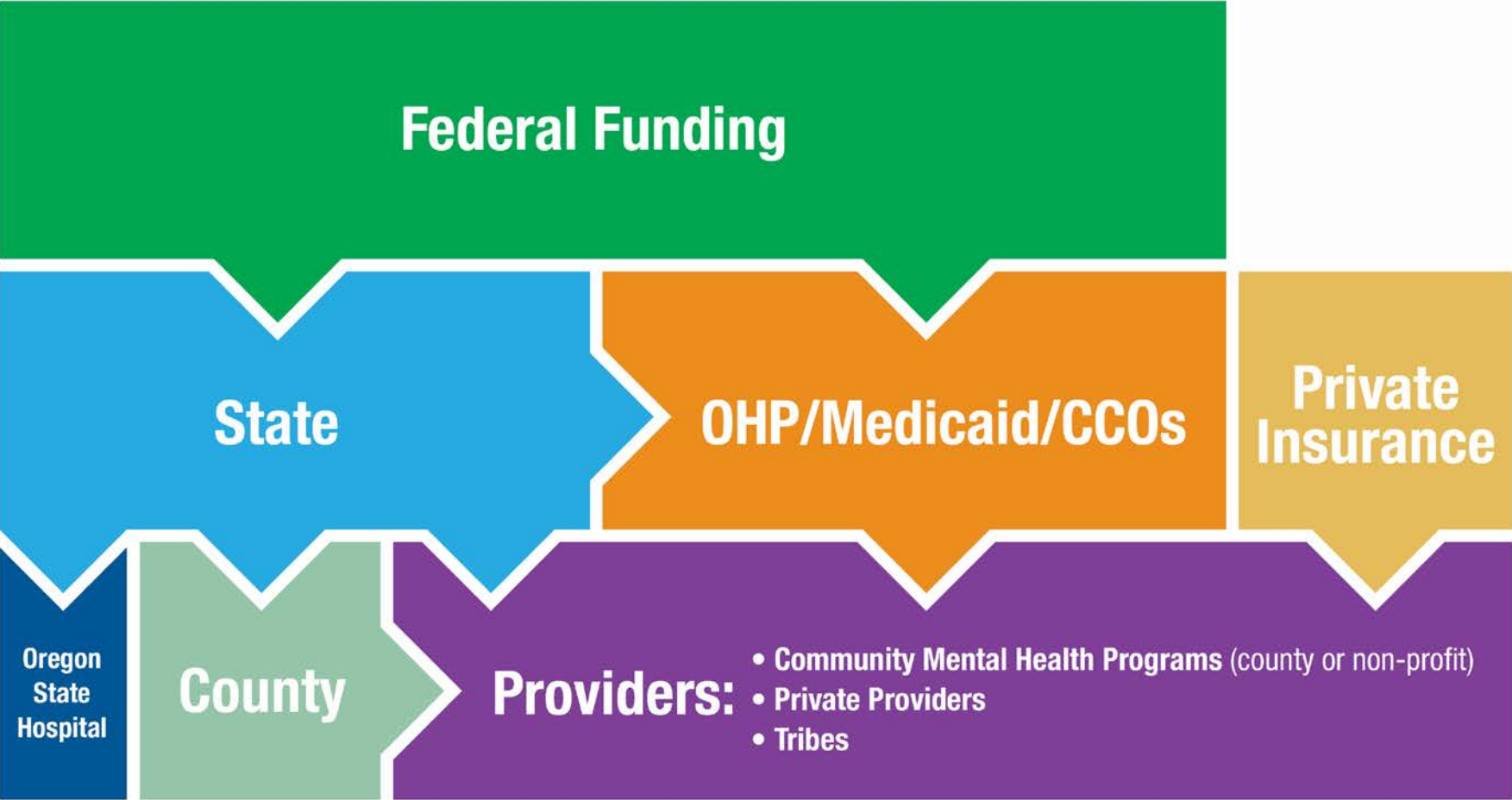
Steve Allen, Behavioral Health Director



# The Triple Aim Vision for Oregon

- 1 Better health**
- 2 Better care**
- 3 Lower costs**

# Behavioral Health Funding Streams



# Coordinated Care Organizations

## CCO 1.0

- Delegated full benefit
- Limited provider network and long wait times
- Members unable to access BH in PCPCH
- Limited care coordination and members “falling through the cracks”

## CCO 2.0

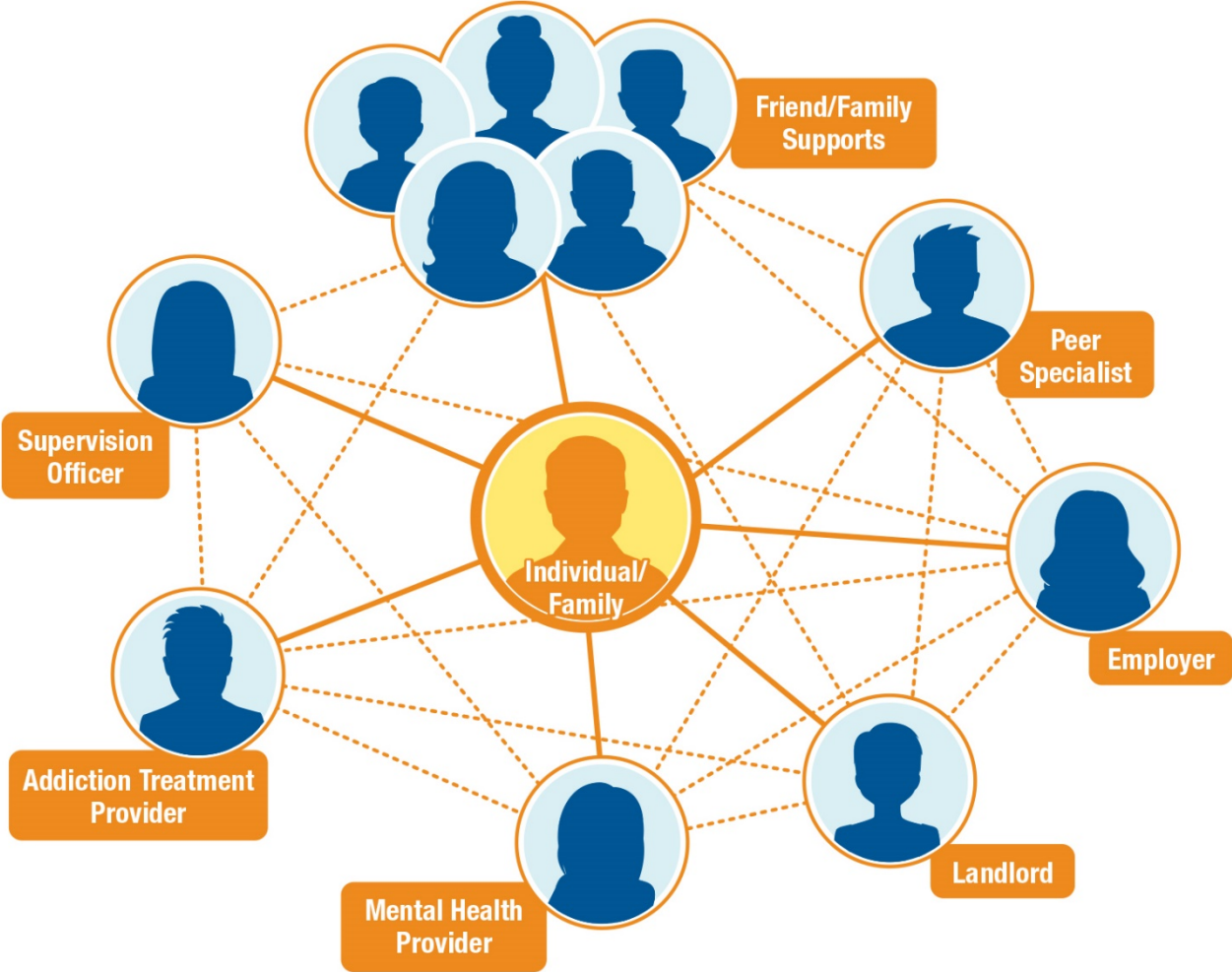
- Responsible for BH benefit
- Must ensure adequate provider network and timely access to care (per OAR)
- Must contract for and reimburse BH in primary care
- Priority populations eligible for intensive care coordination

# Community Mental Health Programs

By statute (ORS 430.630), CMHPs provide basic services to persons with mental illness or Substance Use Disorder, subject to:

- Availability of funds;
- Rules established by OHA; and
- Service Elements in OHA-county contracts.

# Behavioral Health System



# BH Immediate Challenges

**Homelessness**

**Access to Care**

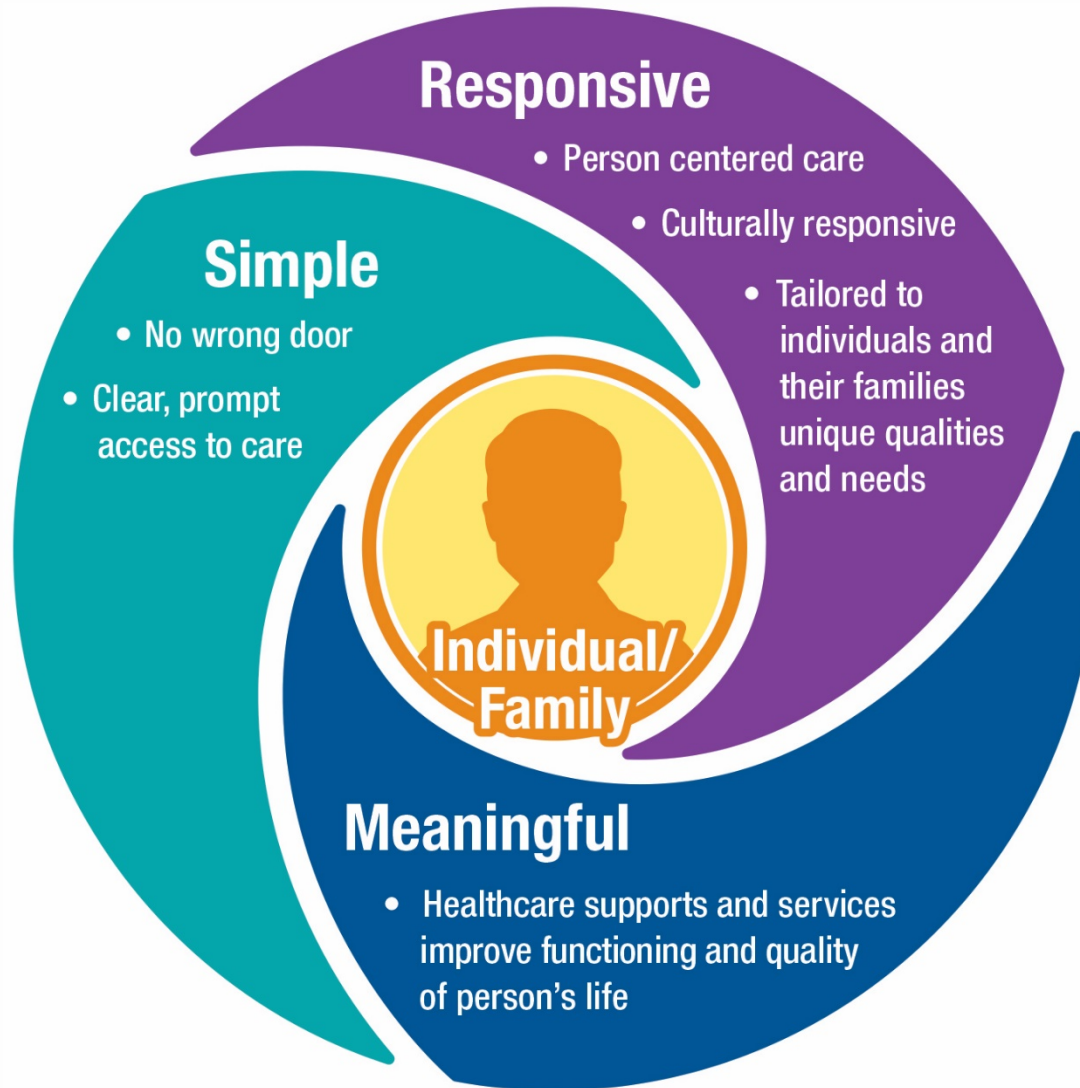
**Aid and Assist**

**Addiction**

**Children's residential placements and out of state child welfare youth**

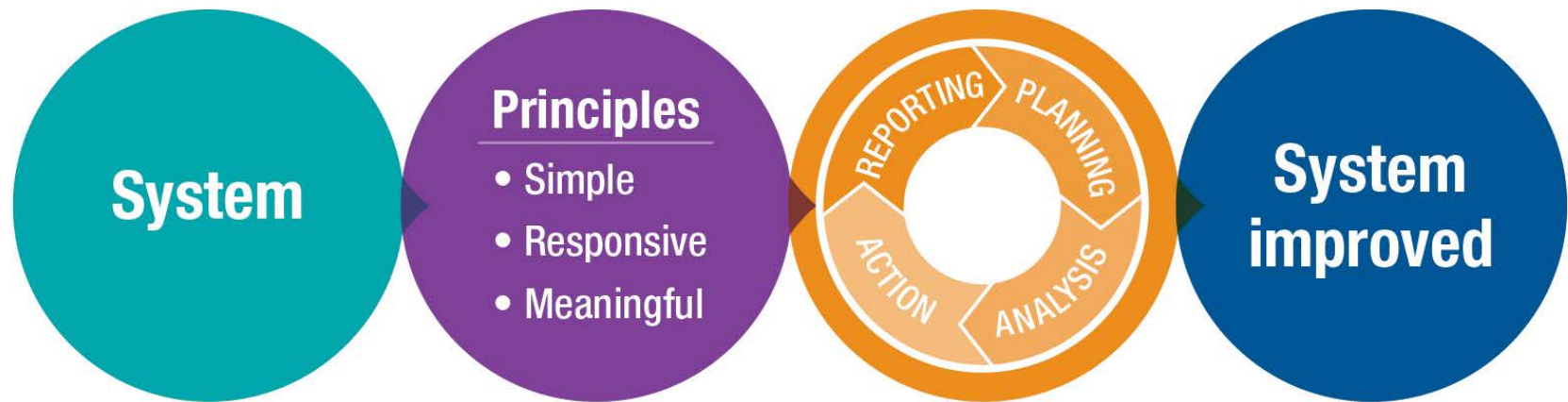
**Mental Health Parity**

**Integration**





# Behavioral Health System Improvement Engine



# Project Nurture

- Team-based approach to care for pregnant women and parenting moms with opioid use disorder, with the goal of keeping mom and child together.
- Access to comprehensive behavioral health and physical health

## Key outcomes:

- 70% reduction in preterm birth compared to women with SUD not in Project Nurture
- 93% of Project Nurture participants have long-term custody of their infant at program exit

# Integration

## Certified Community Behavioral Health clinics (CCBHC)

- CCBHC provide integrated physical and behavioral health care and making a meaningful difference in the lives of Oregonians with complex needs.

## Behavioral Health Homes (BHH)

- BHH will be based on the Patient-Centered Primary Care Home Program (PCPCH)
- BHH will provide integrated behavioral and physical health care in a behavioral health setting

---

**Thank You**

**Health**  
Oregon  
Authority