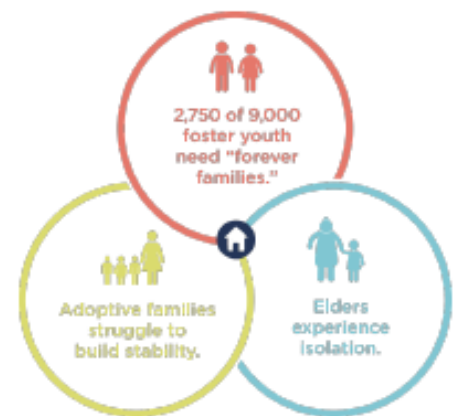


What is Bridge Meadows?

Bridge Meadows builds purposeful communities where children, families, and elders flourish together. These unique multi-generational communities, located in the Portland Metro region, are filled with children formerly in foster care, their forever parents, and elders over 55 who find a true home built with love and a shared vision of a better tomorrow.

Bridge Meadows currently serves 150 residents: 50 youth, 21 parents and 61 low-income elders. The Bridge Meadows model offers a powerful new alternative to the isolation, trauma and adversity that too many foster youth, their forever families and low-income seniors endure.

Residents are empowered to recalibrate the trajectories of their lives. It begins with safe, stable housing. This threshold to permanence sets the stage for former foster youth to succeed in school, for forever parents to build parenting skills and stable families, and for elders of modest means to keep their brains and bodies healthy and their lives filled with purpose. Stable affordable housing, integrated onsite support services, therapeutic interventions and three generations working together...Foster children, families, seniors and the state of Oregon and all its citizens benefit.



Interrupting the cycle of instability and isolation

Bridge Meadows promotes health and well-being across three generations by providing a community for youth in foster care, supporting their forever parents with resources and guidance, and helping elders retain meaning and purpose in their daily lives through positive social connection.

Foster kids - One of 9,000 children in foster care annually in the state of Oregon looking for a "forever family."

Foster Families - Usually extended family members willing to take foster kids (keeping them out of state system) but in need of supports. Wraparound, stabilizing resources are needed for these families and their adoptive children to achieve permanence together.

Elders - Adults over 55 who find safe, affordable housing and an opportunity to make a meaningful difference in the lives of families and their children. Elders commit to 400 hours per year in service to the community.



Intentional Community

An intentional community is a planned residential community designed from the start to have a high degree of social cohesion and teamwork.

Purpose Built Community

Defined neighborhoods where transformative programs and infrastructure can be established. By changing the place, the outcomes for the people who live there are changed.

Impact on State

Bridge Meadows is an innovative solution at the intersection of child welfare, aging and affordable housing - issues that impact each of us socially and emotionally and the state economically:

- 100% of foster youth go to school regularly and 85% achieve greater academic success
- Parents report more resilience in managing children's mental health issues
- Estimated \$1.3 million in foster care payments saved
- \$60,000 saved annually in child care costs

Bridge Meadows helps three generation transform individual vulnerability and collective strength while saving costs of human services and housing to the state.