

2024 HRSN Guidance Document



Version date	June 7, 2024
Note: This guidance document is intended to provide Coordinated Care Organizations (CCOs) with additional programmatic details and expectations for delivering HRSN Services starting 3/1/24. This document will be updated from time to time as needed. Contents of this document has been updated to reflect the CMS approved HRSN Services Protocol , which was released on February 1, 2024.	

Contents

Background	4
Purpose	4
2024 HRSN Guidance	6
1. Climate-Related Supports	6
a. Clinically Appropriate Climate-Related Devices	6
b. Climate-Related Support Services	6
c. Requirements for Safe Use of Climate Devices	7
2. Eligibility for Climate-Related Supports	8
a. HRSN Covered Populations	8
b. HRSN Climate Device Clinical Risk Factors	8
c. HRSN Climate Device Social Risk Factors	11
3. HRSN Outreach and Engagement Services	12
a. Fees Payable for HRSN Outreach and Engagement Services	12
b. Documentation Requirement	12
4. HRSN Service Delivery: Member Identification, Screening, Authorization, and Person-Centered Service Plan	13
a. Member Identification	13
b. HRSN Requests	20
c. Screening Members for HRSN Eligibility	20
d. Documenting the HRSN Eligibility Screening	21
e. Completing the HRSN Eligibility Screening Template Based on Self-Attestation	21
f. Authorization or Denial of HRSN Services	22
g. CCO Protection from Liability	22
h. Person-Centered Service Plan (PCSP)	22
i. Authorization for Disclosure of Protected Health Information (PHI)	23
5. Closed Loop Referrals	24
a. Definitions	24
b. Requirement of Closed Loop Referrals	25
c. Technology for Closed Loop Referrals	25
d. Member Right to Opt Out of Technology for Closed Loop Referrals	26
e. Proposed Approach to Technology for Closed Loop Referrals	26
6. Other Requirements for Climate-Related Supports	28
a. Timeframe for Delivery of Devices	28
b. Climate Device Restrictions	28

c. Climate Device Recommended Specifications	29
7. Provider Qualifications.....	30
a. Provider Qualifications Applicable to All HRSN Service Providers.	30
b. HRSN Service Provider Readiness	32
c. Domain-Specific Provider Qualifications	33
8. HRSN Non-Risk Settlement Procedure	35
a. Manual Payment Process	35
b. Automatic Payment Process	35
c. Administrative Payment Process.....	36
d. Billing guidance and required elements.....	36
9. HRSN Data Collection and Reporting	37
10. Health-Related Services (HRS) vs. Health-Related Social Needs (HRSN) Benefit	38
11. SHARE (Supporting Health for All through Reinvestment) Initiative vs. HRSN Benefit ...	38
Appendices	39
Appendix A: HRSN Payment Responsibility	39
Appendix B: HRSN Covered Populations	40
Appendix C: Qualifying IMD Facilities	41
Appendix D: Qualifying Carceral Facilities	45
Appendix E: HRSN Eligibility Screening Template.....	47
Appendix F: Automatic Payment Process.....	55
Appendix G: HRSN Guidance Document Version Tracker.....	58

Background

In September 2022, the Centers for Medicare and Medicaid Services (CMS) approved Oregon's [1115 Medicaid Demonstration Waiver](#) for a five-year timeframe, covering the period of October 2022 – September 2027. The approved waiver includes ground-breaking authority to provide Health Related Social Needs (HRSN) Services as a covered Oregon Health Plan (OHP) benefit to eligible Open Card/Fee-For-Service (FFS) and Coordinated Care Organization (CCO) Members, including individuals who are Members through the Healthier Oregon Program.¹

The approved HRSN Services include housing, nutrition, climate-related supports, and outreach and engagement services, which will be phased in according to the timeline below. Per the March 2024 HRSN [Amendment](#) to the 2024 Medicaid [Contract](#), CCOs are required to provide approved HRSN Climate-Related Supports and HRSN Outreach and Engagement Services beginning March 2024 to eligible Members enrolled in CCO-A or CCO-B. See [Appendix A](#) for information on CCO Plan Types.

March 2024	November 2024	January 2025
Climate-Related Supports and Outreach and Engagement Services go live for Members in HRSN Covered Populations	Housing Services and additional Outreach and Engagement Services go live for Members who are at-risk of homelessness*	Nutrition Services go live for Members in HRSN Covered Populations

*The State is still determining when housing services will go live for other HRSN Eligible Members.

Purpose

The HRSN Guidance Document is complementary to the March 2024 HRSN Amendment and the 2024 Medicaid Contract and provides additional programmatic details and expectations for delivering HRSN Services. It should not be used independently of the Amendment or Contract. While additional details may be added in the future, at a minimum, this document provides information on the following:

1. Climate-Related Supports
2. Eligibility for Climate-Related Supports
3. HRSN Outreach and Engagement Services
4. HRSN Service Delivery: Member Identification, Screening, and Authorization
5. Closed Loop Referrals
6. Other Requirements for Climate-Related Supports

¹ CCO responsibility for Members on OHP through the Healthier Oregon Program is covered in the separate 2024 [contract](#) and March 2024 HRSN [amendment](#) for non-Medicaid, state-funded services. HRSN Services are the same all CCO Members who have full OHP benefits, regardless of which CCO contract applies to them.

7. Provider Qualifications
8. HRSN Non-Risk Settlement Procedure
9. HRSN Data Collection and Reporting

This document will be stored on the [CCO Contracts Form Website](#) and will be updated as needed.

2024 HRSN Guidance

1. Climate-Related Supports

Climate-Related Supports are climate-related devices and services provided to HRSN Authorized Members in their own home or non-institutional, non-congregate primary residence, and for whom such equipment and support are Clinically Appropriate as a component of health services treatment or prevention. Subject to Ex. B, Part 2, Sec. 15, Para. c, Sub.Para. (1) of the March 2024 HRSN Amendment, HRSN Eligible Members are only eligible for new climate-related devices every thirty-six (36) months.

a. Clinically Appropriate Climate-Related Devices

Clinically Appropriate climate-related devices for Members residing in their home non-institutional, non-congregate primary residence include:

- (i) Air conditioners for individuals at health risk due to significant heat,
- (ii) Heaters for individuals at increased health risk due to significant cold,
- (iii) Air filtration devices and, as needed, replacement air filters for individuals at health risk due to compromised air quality,
- (iv) Mini refrigeration units as needed for individuals for medication storage, and
- (v) Portable power supplies (PPSs) for individuals who need access to electricity-dependent equipment (e.g., ventilators, dialysis machines, intravenous equipment, chair lifts, mobility devices, communication devices, etc.) or are at risk of public safety power shutoffs (PSPS) that may compromise their ability to use medically necessary devices.

A list of diagnoses or other conditions that establish clinical need for each device type listed above is included in *Table 1* in Section 2: Eligibility for Climate-Related Supports. The list is not exhaustive, and other conditions may be approved through an individual review for medical exception aligned with OHA's Medical Management Committee Process and/or existing CCO processes for approving covered services through medical exception review.

Additionally, recommended specifications for each climate device are included in *Table 3* in Section 6: Other Requirements for Climate-Related Supports.

An appendix will contain an ICD-10 crosswalk for the HRSN Clinical Risk Criteria once the crosswalk is finalized. This ICD-10 crosswalk is not intended to be an exhaustive list of all potentially appropriate ICD-10 diagnostic codes for the HRSN Clinical Risk Criteria, particularly Z codes. In alignment with best practices for diagnosing and coding, CCOs should use the most specific ICD-10 code that represents the Member's qualifying Clinical Risk Criteria. In addition, specific health conditions not represented by these ICD-10 codes may be considered in individual circumstances for approval., .

b. Climate-Related Support Services

Climate-Related Support services include, as may be needed by the Member, the provision and service delivery of the climate-related devices identified above. For air conditioners, Climate-Related Support services also include installation as

needed by the Member. In addition, HRSN climate device maintenance shall be comprised of the following:

- (i) Air Filtration Devices (AFDs) – AFDs require replacement filters for effective air filtration. The rate at which filters need replacing is dependent on variables such as hours of use and the amount of smoke or other harmful particles in the air requiring filtration. The initial device shall be delivered with no less than one additional replacement filter. HRSN Authorized Member request for additional air filter replacements shall be limited to three filter replacement fulfillments for the twelve (12) months following the delivery of the climate-related device, provided they do not become ineligible for Climate-Related Supports during such period. Subject to an HRSN Authorized Member being reassessed as eligible for Climate-Related Support Services at the end of each twelve (12) month period, CCOs must provide such Members with air filter replacements in accordance with the standard for the initial twelve (12) month period following the delivery of the climate-related device.
- (ii) Device failure – If a covered device is damaged or defective upon arrival or fails to function properly within one year from the date on which the HRSN Authorized Member received their device, the manufacturer warranty shall be the first step towards a resolution. If either (i) the device is no longer within the manufacturer’s warranty period or (ii) the warranty does not cover the necessary repairs, and the HRSN Authorized Member is still eligible for the climate-related device at the time the climate-related device ceased to function properly, CCOs shall replace or repair the device at least once. CCOs shall not be required to repair or replace a climate-related device more than once when the climate-related device is outside the warranty period or the reason for failure is not covered by the warranty.
- (iii) Warranty Process – CCOs shall support all HRSN Authorized Members with service call coordination or device replacement coordination for a period of twelve (12) months from the date the on which the applicable Member received their device.
- (iv) Replacement Climate-Related Devices – In the event an HRSN Authorized Member advises the CCO that (i) their climate-related device was stolen, or (ii) they moved to a new residence without taking the climate-related device with them, the climate-related device may be replaced by a CCO subject to its reasonable discretion. However, in no event shall an HRSN Authorized Member be entitled to receive a replacement more than once during any thirty-six (36) month period.

c. Requirements for Safe Use of Climate Devices

To receive a Climate-Related Device, Members must attest to their ability to safely use the devices to reduce the risk of injury or harm. The safe use of devices requires that a member reside in a non-institutional, non-congregate housing or “recreational vehicle”, as defined in [ORS 174.101](#), that has a reliable source of electricity for operating a device, and that the Member or their Representative can safely and legally install the device in their place of residence.

In the event the foregoing conditions cannot be met, the HRSN Eligible Member may not be Authorized for receipt of the Climate-Related device.

Note: The [HRSN Request Form](#), and the HRSN Service Eligibility Screening Template, located in Appendix G, includes a section for attesting to safe use of climate devices.

2. Eligibility for Climate-Related Supports

To be eligible for Climate-Related Supports, an individual must meet all of the following requirements:

1. Be enrolled in the OHP either through a CCO or Open Card/Fee-for-Service Program;
2. Be in at least one HRSN Covered Population;
3. Meet at least one of the HRSN Climate Device Clinical Risk Factors;
4. Meet the criteria for an HRSN Climate Device Social Risk Factor, which includes meeting safe use requirements for the device(s) and not already receiving the same or substantially similar services from a local, state, or federally-funded program.

Definitions of the HRSN Climate Device Clinical Risk Factors and HRSN Climate Device Social Risk Factors are in [OAR 410-120-0000](#) and detailed further below.

a. HRSN Covered Populations

Member must be in one of the HRSN Covered Populations, as further specified in [Appendix B: HRSN Covered Populations](#).

- Young Adults with Special Health Care Needs (YSHCN) (*not eligible for HRSN until 2025*)
- Adults and Youths Discharged from an IMD²
- Adults and Youths Released from Incarceration
- Individuals Involved with Child Welfare
- Individuals Transitioning to Dual Status
- Individuals who are Homeless or At Risk of homelessness

b. HRSN Climate Device Clinical Risk Factors

OHA appreciates that the clinical conditions specified for the age and pregnancy-related HRSN Climate Device Clinical Risk Factors are broad. CMS required the identification of particular conditions that place pregnant people, young children, and elders at higher risk for morbidity and mortality during extreme weather.

² The State proposed to also cover non-IMD facilities that provide mental health and SUD treatment (e.g., facilities with fewer than 16 beds). CMS denied this request on the grounds that coverage of individuals discharged from non-IMD facilities would exceed the authority provided in the STCs (which refer to IMD facilities only).

When considering how to focus outreach to Members about this benefit, CCOs should consider Priority Populations,³ and may further consider Members with unstable or severe symptoms, Members with more than one of the following conditions, and individuals at the extremes of age. CCOs should also consider other medical conditions for review by exception including hyperthyroidism, autoimmune conditions, immunosuppression, fluid/electrolyte/acid-based conditions, and use of medication that impacts thermoregulation.

In addition, CCOs will utilize different outreach methods depending on the population they are contacting, ranging from low intensity outreach (e.g., general information across MyChart) to high intensity outreach (e.g., text messages, phone calls, etc.).

Table 1: Climate Device Clinical Risk Factors

Climate Device Clinical Risk Factors (Condition must have been active in the past 12 months. Members must meet age or pregnancy criteria at the time of eligibility determination, as relevant.)	Eligible Climate Device
Schizophrenia spectrum and other psychotic disorders	Air Conditioner, Air Filtration Device, Heater
Bipolar and related disorders	
Major depressive disorder with an acute care need in the past 12 months including a suicide attempt, crisis services utilization (emergency department, mobile crisis team, etc.), acute psychiatric hospitalization, or residential treatment	
One or more of the following substance use disorders: alcohol use disorder, hallucinogen use disorders, inhalant use disorder, opioid use disorder, stimulant use disorder	
Major neurocognitive disorders	
Chronic lower respiratory condition including chronic obstructive pulmonary disease (COPD), asthma requiring regular use of asthma controlling medications, restrictive lung disease, fibrosis, chronic bronchitis, bronchiectasis	
Chronic cardiovascular disease, including cerebrovascular disease and heart disease	
Spinal cord injury	
In-home hospice	
Any sensory, physical, intellectual, or developmental disability that increases health risks during extreme climate events	
Child less than 6 years of age and currently has, has a history of, or is at risk for at least one of the following:	

³ Regional Health Equity Coalition definition of priority populations: ORS 413.042: “Priority populations” means: Communities of color; Oregon’s nine federally recognized Indian tribes, including descendants of the members of Oregon’s nine federally recognized Indian tribes; Immigrants and refugees; Migrant and seasonal farmworkers; Low-income individuals and families; Persons with disabilities; and Individuals who identify as lesbian, gay, bisexual, transgender or queer or who question their sexual or gender identity. For the purposes of HRSN Services, priority populations are those with the intersectional impact of being low income and a member of at least one other of the priority populations.

<ul style="list-style-type: none"> • Heat stroke or heat exhaustion • Hypothermia, frostbite, or chilblains • Malnutrition • Dehydration • Child maltreatment as defined by the CDC (https://www.cdc.gov/violenceprevention/pdf/CM_Surveillance-a.pdf) • Is a child with a special healthcare need (CYSHCN) as defined by the Health Resources and Services Administration (HRSA) (https://mchb.hrsa.gov/programs-impact/focus-areas/children-youth-special-health-care-needs-cyshcn#i) • An acute or chronic respiratory condition • A respiratory or gastrointestinal infectious disease, or becoming febrile with an infectious illness • Low birth weight of <2500 grams 	
<p>Pregnant and currently has, has a history of, or is at risk for at least one of the following:</p> <ul style="list-style-type: none"> • Heat stroke or heat exhaustion • Hypothermia, frostbite, or chilblains • An acute or chronic respiratory condition • Infection • High-risk pregnancy as defined by the NIH (https://www.nichd.nih.gov/health/topics/high-risk/conditioninfo) • History of previous pregnancy, delivery, or birth complication including gestational diabetes, preeclampsia, preterm labor, preterm birth, placental abruption, newborn low birth weight, stillbirth • Abuse or interpersonal violence • Malnutrition • Hyperemesis gravidarum and other causes of dehydration • Maternal low birth weight of <2500 grams • Multiple pregnancy • Mental health condition 	
<p>Adult 65 years and older and currently has, has a history of, or is at risk for at least one of the following:</p> <ul style="list-style-type: none"> • Heat stroke or heat exhaustion • Hypothermia, frostbite, or chilblains • Malnutrition • Dehydration • Currently taking medications that impact heat tolerance, including for upper respiratory infections, allergies, COPD, muscle spasms, blood pressure, diuresis, diarrhea, constipation, anti-inflammation, mental health conditions, and sleep • Abuse or neglect • A respiratory or gastrointestinal infectious disease, or becoming febrile with an infectious illness • Mental health condition • Two or more chronic health conditions 	

Chronic kidney disease	Air Conditioner, Heater
Diabetes mellitus, requiring any medication, oral or insulin	
Multiple sclerosis	
Parkinson's disease	
Previous heat-related or cold-related illness requiring urgent or acute care, e.g., emergency room and urgent care visits	
Individual requires home oxygen use: home oxygen, oxygen concentrators, home ventilator	Air Filtration Device
Individual uses medications requiring refrigeration. Examples include medications for diabetes mellitus, glaucoma, and asthma; TNF inhibitors	Mini refrigerator
Enteral and parenteral nutrition	
Individual needs durable medical equipment (DME) requiring electricity for use. Examples include but are not limited to: <ul style="list-style-type: none"> • Oxygen delivery systems, including concentrators, humidifiers, nebulizers, and ventilators • Intermittent positive pressure breathing machines • Cardiac devices • In home dialysis and automated peritoneal dialysis • Feeding Pumps • IV infusions • Suction pumps • Power wheelchair and scooter • Lift systems and electric beds • Breast pumps for first 6mo post-partum • Other DME medically required for sustaining life 	Portable Power Supply
Individual requires assistive technologies requiring electricity necessary for communication or ADLs.	
Other conditions approved through an individual review for medical exception aligned with OHA's Medical Management Committee Process and/or CCO exception review process.	Any device

c. HRSN Climate Device Social Risk Factors

A Member meets the HRSN Climate Device Social Risk Factor requirement if they reside in their own home or a non-institutional, non-congregate primary residence and for whom an air conditioner, heater, air filtration device, portable power supply (PPSs), and/or mini refrigeration units for medications is Clinically Appropriate as a component of health services treatment or prevention.

3. HRSN Outreach and Engagement Services

HRSN Service Providers may provide HRSN Outreach and Engagement Services for OHP enrolled individuals presumed eligible for HRSN Climate-Related Services and receive compensation. HRSN Outreach and Engagement Services must include, at a minimum, the HRSN Service Provider performing activities described in a and b below, and may include the provision of activities described in c and d:

- a. Attempting to contact and engage Members who belong to one or more HRSN Covered Populations and who are presumed eligible for HRSN Climate-Related Supports;
- b. Determining whether the Member is enrolled in the FFS Program or a CCO and, if a CCO, which one;
- c. Transmitting the partially or fully completed [HRSN Request Form](#), or information contained within to the Member's CCO or to OHA's FFS Program (or its designated third-party contractor) for HRSN eligibility determination and HRSN Service authorization;
- d. Providing HRSN Eligible Members who may have a need for medical, peer, social, educational, legal, or other related services with information and logistical support necessary to connect them with the needed resource and services.

Note: Payment for Outreach and Engagement activities performed by the CCO or subcontractor are included in CCO Administrative Payments.

a. Fees Payable for HRSN Outreach and Engagement Services

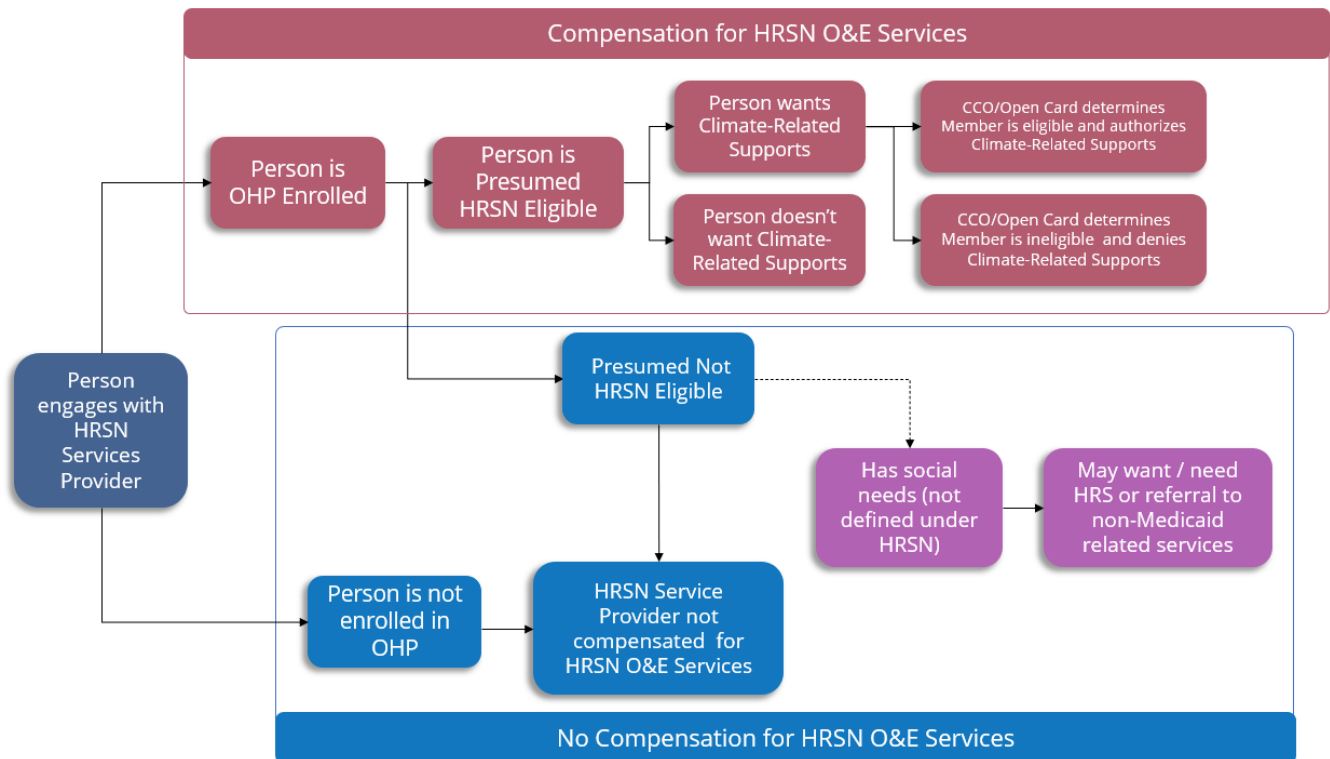
CCOs may compensate HRSN Service Providers for conducting HRSN Outreach and Engagement Services to Members presumed eligible for HRSN Climate-Related Supports up to a maximum of five hours per Member over a 36-month period, in accordance with the HRSN Fee Schedule. After the 36-month period has expired, a Member may be rescreened for HRSN Climate-Related Supports Eligibility.

This means the HRSN Service Provider must have confirmation the individual is enrolled in the OHP and have reason to believe the individual is eligible for HRSN Climate-Related Supports from known information, or the result of a Member's attestation that they are in an HRSN Covered Population, meet HRSN Climate Device Clinical Risk Factor criteria, and meet HRSN Climate Device Social Risk Factor criteria.

b. Documentation Requirement

CCOs must require all HRSN Service Providers to document the date, time, duration, and description of the Outreach and Engagement Services.

The diagram below provides additional details on how HRSN Service Providers may receive compensation for HRSN Outreach and Engagement Services



4. HRSN Service Delivery: Member Identification, Screening, Authorization, and Person-Centered Service Plan

a. Member Identification

To promote access and health equity, it is critical to have many paths that lead to a referral for HRSN Services, including HRSN Requests made directly by members and caregivers, HRSN Connector and Provider submitted Requests, and proactive identification and outreach by CCOs. CCO proactive identification of potentially HRSN eligible Members may not be appropriate for all HRSN Services, nor will all HRSN Services require that contracted HRSN Service Providers conduct outreach. However, CCOs must accept HRSN Requests from both HRSN Connectors and HRSN Service Providers regardless of whether CCOs requested the Outreach and Engagement. It is the CCO's responsibility to ensure all information necessary for an authorization decision is compiled, while making an effort to avoid duplicative screening. CCOs shall ensure multiple pathways for individuals to be identified as being enrolled in Medicaid, belonging to an HRSN Covered Population, and potentially having one or more HRSN Service needs. Pathways for CCOs to identify HRSN eligible Members must include:

- (i) CCO proactively identifying Members who are presumed to belong to an HRSN Covered Population and who also have at least one HRSN Clinical Risk Factor for an HRSN Service through a review of data sources available to the CCO;
- (ii) Contracting with HRSN Service Providers to conduct HRSN Outreach and Engagement Services to identify Members who belong to a Covered

Population and are presumed eligible for an HRSN Service and make HRSN Requests;

- (iii) Engaging with and receiving HRSN Requests from HRSN Connectors other than HRSN Service Providers;
- (iv) and Accepting Members' (or Caregivers) 'self-referral(s).

CCOs will need to rely on a variety of data sources to identify members potentially eligible for HRSN services. The following tables provide additional detail on each HRSN Covered Population for the purposes of member identification, including:

- More complete, specific, and contextualized definitions for each covered population, including details such as qualifying facilities.
- Specific information to help identify populations using claims and other OHA-provided data sources, such as Program Resource Eligibility Codes (PERC) available on a CCOs 834 report.

CCOs are expected to use this information in conjunction with their own records, systems, and data to facilitate the proactive outreach and engagement of potentially eligible HRSN Covered Populations within their membership. CCOs may also be expected to use this information to confirm HRSN Member eligibility once HRSN services have been requested.

Note: This guidance does not guarantee Member eligibility for HRSN through an HRSN Covered Population. The CCO will be required to conduct eligibility verifications as instructed in the HRSN Screening process. Additional data and detail will be provided to CCOs as available in future updates to this guidance.

Adults and youths discharged from an Institution for Mental Diseases (IMD)

Definition: Members who have been discharged from an IMD (as such term is defined in 42 CFR § 435.1010) within the last 365 days. Subject to Ex. B, Part 2, Sec. 15 of the Contract, eligibility for the HRSN Services shall expire on the 366th calendar day after discharge from an IMD.

Definition details

1. Institution for Mental Diseases, as defined in 42 CFR § 435.1010, means a hospital, nursing facility, or other institution of more than 16 beds that is primarily engaged in providing diagnosis, treatment, or care of persons with mental diseases, including medical attention, nursing care, and related services.
2. Whether an institution is an IMD is determined by its overall character as that of a facility established and maintained primarily for the care and treatment for individuals with mental diseases, whether or not it is licensed as such.
3. An institution for individuals with Intellectual Disabilities is not an IMD.

OHA-provided data for member identification

Definition component	Qualifying facilities
<p>The list includes the following facility types:</p> <ol style="list-style-type: none"> 1. Substance Use Disorder (SUD) Residential Treatment Facilities (RTFs) and Withdrawal Management Programs, 2. Specific Oregon State Hospital facilities, 3. Other qualifying hospital-based facilities 	<p>A comprehensive list of qualifying IMD facilities in Oregon can be found in Appendix C.</p>
<p>This list should not be relied on for the duration of the waiver and OHA will provide quarterly updates.</p>	

Adults and youths released from incarceration	
<p>Definition: Members released from incarceration within the past 365 calendar days, including those released from state and federal prisons, local correctional facilities, juvenile detention facilities, Oregon Youth Authority closed custody corrections, or tribal correctional facilities. Subject to Ex. B, Part 2, Sec. 15 of the Contract, eligibility for HRSN Services shall expire on the 366th calendar day after release from a carceral facility.</p>	
OHA-provided data for member identification facilities	
Definition components	Qualifying facilities
<p>The list includes the following facility types:</p> <ol style="list-style-type: none"> 1. Federal Prisons 2. State Prisons/Department of Corrections (DOC) 3. Local Correctional Facilities 4. Juvenile Detention Facilities 5. Oregon Youth Authority (OYA) Closed Custody Corrections 	<p>A comprehensive list of qualifying carceral facilities in Oregon can be found in Appendix D.</p>
<p>Note: There are no active tribal correctional facilities as of the date of this guidance. This list should not be relied on for the duration of the waiver, and OHA will provide updates every 6 months..</p>	

Individuals involved with child welfare
<p>Definition: Members who are currently or have previously been involved in Oregon's Child Welfare system, including members who are currently or have previously been:</p> <ol style="list-style-type: none"> 1. In foster/substitute care or the recipient of adoption or guardianship assistance; 2. Served on an in-home plan;

3. The subject of an open child welfare case.

Note: This definition has been updated for clarity from the definition included in the [HRSN Services Protocol \(Released February 1, 2024\)](#). “Family preservation” was replaced with “served on an in-home plan” to avoid confusion with the Oregon Department of Human Services (ODHS) Family Preservation pilot program. “In any court” was removed from “the subject of an open child welfare case” to clarify that legal involvement is not a requirement.

OHA-provided data for member identification

CCOs can identify some Members of the child welfare population using the PERC codes they receive in their daily eligibility files (834), specified below.

The PERC codes below do not collect data on whether the Member was previously involved in Child Welfare specifically in the State of Oregon. If the CCO is using PERC codes to identify this population, it is the responsibility of the CCO to confirm the Member was involved with the foster care system in the State of Oregon.

Definition component	PERC description	PERC
1. In foster/substitute care or the recipient of adoption or guardianship assistance	SCF Children (foster care and post-adoptive care)	19, 62, GA, C5
	MAGI Substitute Care XIX Residential	C5
	MAGI Substitute Care XIX Non-Residential	C5
	Former Foster Care	C5
2. Served on an in-home plan;	<i>OHA does not currently have a way to provide this information to CCOs. It is the CCO’s responsibility to ensure all information necessary for an authorization decision is compiled, while making an effort to avoid duplicative screening. If a Member submits a Self-Attestation, the CCO shall use good faith efforts to verify a Member’s Self-Attestation within a reasonable period of time.</i>	
3. The subject of an open child welfare case.		

Members transitioning to Dual Eligibility Status

Definition: Members enrolled in Medicaid who are transitioning to dual status with Medicare and Medicaid coverage. Members shall be included in HRSN Covered Population for the ninety (90) calendar days preceding the date Medicare coverage is to take effect and 270 calendar days after it takes effect.

Note: This definition has been updated for clarity from the definition included in the [HRSN Services Protocol \(Released February 1, 2024\)](#). “Eligibility for services must be determined within 270 calendar days after transition to dual status” was removed for clarity. This could mistakenly have been interpreted as “eligibility needs to be determined only in the 270 days after Medicare coverage takes effect, and not in the

90 days prior;" it should be read as "eligibility needs to be determined no later than 270 days after Medicare coverage takes effect".

Definition details

Any member transitioning to dual eligibility status will be eligible for HRSN during the (90) calendar days preceding the date Medicare coverage is to take effect. Only fully dual eligible members will be eligible for HRSN once they transition to Medicare, in the 270 calendar days after Medicare coverage takes effect.

See **Figure 1** below (Eligibility for HRSN based on Medicare Effective Date).

OHA-provided data for member identification

Definition component	Data sources
(90) calendar days preceding the date Medicare coverage	CCOs can use the Medicare Effective Dates in their daily eligibility file (834) to identify Members transitioning to dual eligibility status. If a member has a Medicare Effective Date within the next 90 calendar days, then they would be considered part of the HRSN Covered Population. Members will likely still have a BMH benefit package until shortly before their Medicare effective date. CCOs are encouraged to use date of birth to proactively identify individuals that may be aging into Medicare eligibility (age 65+).
270 calendar days after Medicare coverage date	CCOs can use benefit package information shared via the daily eligibility file (834) to identify Members that have recently transitioned to fully dual eligible status. The benefit packages indicating fully dual status are BMD and BMM.


CCOs will not be able to predict whether their Members transitioning to dual eligibility will be redetermined by the State as a full or partial dual. If a Member is determined as a partial dual, they will lose their OHP benefits at their Medicare effective date, and will not be eligible for HRSN Services beyond the Medicare effective date. At this point, they will be disenrolled from a CCO and no longer appear in CCO data. Due to this, CCOs should ensure that they are using the information that they have available for timely identification and outreach of this population, as well as planning for potential transition off HRSN services.

Additional resources

Medicare is health insurance for:

- People 65 or older
- Some people under 65 with disabilities (individuals must have received Social Security Disability benefits for 24 months)
- People of any age with End-Stage Renal Disease

Figure 1: Eligibility for HRSN based on Medicare Effective Date

	Medicare Effective Date 	
	90 calendar days prior	270 calendar days after
On OHP transitioning to partially dual eligible	Eligible for HRSN	Not eligible for HRSN*
On OHP transitioning to fully dual eligible	Eligible for HRSN	

*Partial duals not eligible for HRSN because Member is no longer eligible for OHP.

Individuals who are homeless or at-risk of becoming homeless	
<p>Definition: Members who meet the definition of 1) homeless as defined by the U.S. Department of Housing and Urban Development (HUD) in 24 CFR 91.5. or 2) at-risk of becoming homeless defined as a) having an income that is 30% or less than the area median income where the individual resides according to HUD's 2024 data b) lacks sufficient resources or support networks to prevent homelessness, and c) meets a Clinical Risk Factor.</p> <p>Note: This definition has been updated for clarity from the definition included in the HRSN Services Protocol (Released February 1, 2024).</p>	
OHA-provided data for member identification	
<p>CCOs can identify some individuals that may meet the annual income requirement specified in the first part of the at-risk of becoming homeless definition. CCOs can use the PERC codes they receive in their daily eligibility files (834), specified below. The PERC codes below do not guarantee real-time data on an individual's income, nor do they cover the entire population of individuals that might be eligible based on income. Notably, children are rarely identified with the Parent of Other Caretaker/Relative (PCR) PERC code ('KA'), as they are most often embedded in the MAGI Child population. This limitation extends to the Blind & Disabled and Old Age Assistance (OAA) populations.</p>	
Definition component: Homeless	Data sources
1. An individual or family who lacks a fixed, regular, and adequate nighttime residence, as referenced in 24 CFR 91.5	<p><i>OHA does not currently have a way to provide this information to CCOs. It is the CCO's responsibility to ensure all information necessary for an authorization decision is compiled, while making an effort to avoid duplicative screening. If a Member submits a Self-Attestation, the CCO shall use good faith efforts to verify a Member's Self-</i></p>
2. An individual or family who will imminently lose their primary nighttime residence, as referenced in 24 CFR 91.5	
3. Unaccompanied youth under 25 years of age, or families with children and youth, who do not otherwise qualify as	

homeless under this definition, as referenced in 24 CFR 91.5		<i>Attestation within a reasonable period of time.</i>	
4. Any individual or family who is fleeing, or is attempting to flee, domestic violence, dating violence, sexual assault, stalking, or other dangerous or life-threatening conditions, as referenced in 24 CFR 91.5			
Definition component: At-risk of becoming Homeless			
1. An individual or family who:			
i)	Has an annual income below 30 percent of median family income for the area, as determined by HUD	MAGI Parent or Other Caretaker/Relative	KA
		HOP Parent or Other Caretaker/Relative	CE, HJ
ii)	Does not have sufficient resources or support networks to prevent homelessness	<i>OHA does not currently have a way to provide this information to CCOs. It is the CCO's responsibility to ensure all information necessary for an authorization decision is compiled, while making an effort to avoid duplicative screening. If a Member submits a Self-Attestation, the CCO shall use good faith efforts to verify a Member's Self-Attestation within a reasonable period of time.</i>	
iii)	Meets an HRSN Housing Clinical Risk Factor	Presence of a qualifying clinical risk factor satisfies this criteria.	
2. A child or youth who does not qualify as "homeless" under this section, but qualifies as "homeless" under section 387(3) of the Runaway and Homeless Youth Act (42 U.S.C. 5732a(3)), section 637(11) of the Head Start Act (42 U.S.C. 9832(11)), section 41403(6) of the Violence Against Women Act of 1994 (42 U.S.C. 14043e-2(6)), section 330(h)(5)(A) of the Public Health Service Act (42 U.S.C. 254b(h)(5)(A)), section 3(m) of the Food and Nutrition Act of 2008 (7 U.S.C. 2012(m)), or section 17(b)(15) of the		<i>OHA does not currently have a way to provide this information to CCOs. It is the CCO's responsibility to ensure all information necessary for an authorization decision is compiled, while making an effort to avoid duplicative screening. If a Member submits a Self-Attestation, the CCO shall use good faith efforts to verify a Member's Self-Attestation within a reasonable period of time.</i>	

Child Nutrition Act of 1966 (42 U.S.C. 1786(b)(15)); or	
3. A child or youth who does not qualify as “homeless” under this section, but qualifies as “homeless” under section 725(2) of the McKinney-Vento Homeless Assistance Act (42 U.S.C. 11434a(2)), and the parent(s) or guardian(s) of that child or youth if living with her or him.	<i>OHA does not currently have a way to provide this information to CCOs. It is the CCO’s responsibility to ensure all information necessary for an authorization decision is compiled, while making an effort to avoid duplicative screening. If a Member submits a Self-Attestation, the CCO shall use good faith efforts to verify a Member’s Self-Attestation within a reasonable period of time.</i>
Additional resources	
County-level area median income limits from HUD for FY 2024 can be found here: https://www.huduser.gov/portal/datasets/il/il24/IncomeLimits-30-FY24.pdf	
Reference Attachment A for income documentation guidance.	

b. HRSN Requests

- (i) CCOs must accept HRSN Requests by any delivery method used by HRSN Connectors (includes HRSN Service Providers or self-referring Members), including, but not limited to email, fax, mail, personal delivery, community information exchange, or any other reliable delivery method.
- (ii) HRSN Connectors may, but are not required to, use the HRSN Request Form, which is available on the [HRSN Climate Supports page](#) in eleven different languages.
- (i) An HRSN Connector may use a tool or template other than the HRSN Request Form if it allows the HRSN Connector to obtain the following information and transmit it to the CCO: (i) the name and contact information for the Member requesting the HRSN Service; and (ii) identification of one or more HRSN Service needs the individual has.
- (iii) CCOs must make a good-faith effort to conduct eligibility screenings of all individuals for whom they receive HRSN Requests that include the individual’s name, contact information, and identification of one or more HRSN Service needs.

c. Screening Members for HRSN Eligibility

- (i) The CCO shall first confirm OHP Medicaid enrollment and, if confirmed, ensure such Member is enrolled with their CCO prior to proceeding with a full HRSN Eligibility Screening. If the Member is an OHP Member, but not enrolled with their CCO, the CCO shall then ensure the Member is connected with their health plan for the purpose of participating in HRSN Eligibility Screening.

- (ii) Once the CCO confirms the individual that is the subject of the HRSN Request is enrolled in the CCO, it shall use reasonable efforts to obtain all other information necessary to complete the HRSN Eligibility Screening. The CCO's reasonable efforts shall include, without limitation, using the information included in the CCO's own records, obtaining only the relevant information from the Member, and when permitted by the Member, obtaining the relevant and appropriate information from the HRSN Connector.
- (iii) The CCO will be required to document its attempts to collect the information needed to determine eligibility.
- (iv) With respect to the certain elements of eligibility, reasonable efforts require only a determination as to whether on its face, the information provided is plausible. In other words, in absence of information that suggests otherwise, CCO should determine eligibility for the following plausible: IMD discharge, carceral release, current or former child welfare involvement, transition to dual status, and HRSN social need.

d. Documenting the HRSN Eligibility Screening

The CCO shall document the results of the HRSN Eligibility Screening, including at minimum, the information listed below:

- (i) The Member's OHP Medicaid Number,
- (ii) The HRSN Covered Population to which they belong,
- (iii) The Member's HRSN Climate Device Clinical Risk Factor(s),
- (iv) The Member's HRSN Climate Related Device Service(s) authorized,
- (v) The Member's HRSN Climate Device Social Risk Factor(s), and
- (vi) Whether the Member is receiving the same or substantially similar service as the identified HRSN Services need from a state or federally funded program.

With respect to (vi) above, CCOs must make reasonable efforts to determine whether the Member is receiving the same or substantially similar service as the identified HRSN Services need from a local, state or federally funded program. This requires reviewing the CCO's internal records, but does not require seeking to obtain information or documentation from third parties, including the Member themselves.

When determining whether the Member is receiving the same or substantially similar service as the identified HRSN Services need from a local, state, or federally funded program, CCOs should use a look-back period of 36 months, in alignment with the Climate Device replacement policy detailed in Section 1: Climate-Related Supports, Para. B, Sub. Para iv.

e. Completing the HRSN Eligibility Screening Template Based on Self-Attestation

If a Member submits a Self-Attestation, the CCO shall use good faith efforts to verify a Member's Self-Attestation within a reasonable period of time. If the CCO cannot, using good faith efforts, verify the Member's Self-Attestation within a

reasonable period of time, the CCO shall, if it determines in its reasonable discretion, the Self-Attestation is truthful, authorize the identified HRSN Services need. The CCO shall document its good faith efforts to verify the Member's Self-Attestation and the reasonable basis for authorizing the HRSN Services in the HRSN Eligibility Screening Template or tool of their choosing, provided it captures data elements described in Section 4: HRSN Service Delivery: Member Identification, Screening, and Authorization, Para. d, Sub.Para (i).

f. Authorization or Denial of HRSN Services

- (i) After completion of the HRSN eligibility determination, CCOs should make an authorization determination as expeditiously as the circumstances require, and shall notify members within fourteen (14) calendar days from the date of, as applicable, authorization or denial.
- (ii) If the Member meets all of the criteria for being HRSN Eligible, the CCO shall authorize the identified HRSN Service need as detailed in Contract.
- (iii) If the Member does not meet all of the criteria for being HRSN Eligible, the CCO shall deny the identified HRSN Service need as detailed in Contract, including informing the Member by sending a Notice of Adverse Benefit Determination (NOABD).
- (iv) If the HRSN Connector who submitted the HRSN Request will be or would have been the HRSN Service Provider, CCOs must notify the HRSN Connector of the approval or denial of the HRSN Request through a Closed Loop Referral.
- (v) Quarterly and as reasonably requested by OHA from time to time and as requested by CMS, CCO shall submit information listed in (a) – (d) in Ex. B, Part 2, Sec. 15, Para 4 of the Contract, to OHA using the HRSN specific tabs on Exhibit L.
- (vi) Quarterly, CCOs will report denial of HRSN Services to OHA using the CCO Grievance and Appeal Log.

g. CCO Protection from Liability

In no event will a CCO be held liable to OHA or the State for authorizing HRSN Services nor will OHA or the State take any adverse action against a CCO based on the CCO's acceptance of a Self-Attestation, provided the authorization was made in accordance with the CCO Contract. However, failure to document the information as required under Para. d, of this section may result in liability to OHA.

h. Person-Centered Service Plan (PCSP)

The CCO is responsible for updating and managing the HRSN Authorized Member's Person-Centered Service Plan (PCSP).

- (i) The PCSP shall be contained within the same document as the Member's Care Plan, and developed and revised in the same manner as the Care Plan, as described in OAR 410-141-3870.
- (ii) Regardless of whether the Member participates in the development of the PCSP, they are still entitled to receive the HRSN Services for which they have been authorized.
- (iii) The HRSN PCSP must include the following:

- a. The recommended HRSN Service(s),
 - b. The authorized HRSN Service duration,
 - c. The HRSN Service Provider, supporting member choice of provider,
 - d. The goals of the HRSN Service(s), identifying other HRSN services, other OHP services the member may need, and
 - e. The follow-up and transition plan, including conducting reassessment for HRSN Services prior to the conclusion of the service.
- (iv) The CCO care manager or coordinator must have at least one meeting with the Member while developing the PCSP. If efforts to have a meeting are unsuccessful, the care manager or coordinator is required to document connection attempts, barriers to having a meeting, and justification for continued provision of service.
 - (v) The CCO should check in with the Member to understand if HRSN services are meeting their needs at least once every 6-months. This should include if additional or new services are needed or if HRSN services are duplicating other services they are receiving.

i. Authorization for Disclosure of Protected Health Information (PHI)

The Health Insurance Portability and Accountability Act (HIPAA) makes a distinction between *consent* and *authorization* to share Protected Health Information (PHI) ([45 CFR 164.506](#) and [45 CFR 164.508](#)). Authorization that meets the requirements of [45 CFR 164.508](#) permits a covered entity to disclose PHI for purposes of HRSN Services.

OHA will not mandate how CCOs share the PHI of their HRSN authorized Members with HRSN Service Providers. However, OHA is committed to protecting the PHI of individuals who are being screened for or are currently receiving HRSN Services; and OHA aims to maintain consistent processes for all OHP Members and HRSN Service Providers to the extent possible.

All OHP Open Card/FFS Members who are authorized to receive HRSN Services will be offered an [Information Sharing Authorization Form](#). By signing the Information Sharing Authorization Form, the HRSN Authorized Member authorizes the sharing of their PHI between the FFS Third Party Contractor (TPC), HRSN Service Provider(s), and health care providers as needed for the HRSN-related purposes specified in Part 1 of the form. This form is available in thirteen languages on the [HRSN Service Provider webpage](#).

The Information Sharing Authorization Form authorizes the sharing of only the information necessary and only for the purposes outlined in the Information Sharing Authorization Form. This means that sharing a Member's information should occur on a need-to-know basis.

OHA will provide an Information Sharing Authorization Form on which, when executed by an HRSN Authorized Member, the FFS TPC may rely to enable the sharing of such HRSN Authorized Member's PHI, as necessary, by and between the FFS TPC and applicable HRSN Service Providers.

The Information Sharing Authorization Form also enables the sharing of substance use disorder information that is subject to federal privacy protections at [42 CFR Part 2](#) by and between the FFS TPC and HRSN Service Providers, but only when a an HRSN Authorized Member specifically authorizes the sharing (i.e., “opts-in” by checking a box) as necessary for the provision of HRSN Services.

The provision of HRSN Services cannot be conditioned upon the HRSN Authorized Member signing the Information Sharing Authorization Form. If a Member who is authorized for HRSN Services declines to sign the Information Sharing Authorization Form, the FFS TPC will notify the Member of their HRSN Service authorization and will send the Member the referral and contact information for relevant HRSN Service Provider(s). That Member will be responsible for connecting with the HRSN Service Provider to receive their HRSN Service. The FFS TPC will be responsible for ensuring their HRSN Service Providers accept referrals from the TPC and from HRSN Authorized Members. Under HIPAA’s exceptions, such as for health care operations purposes (e.g., coordinating a Member’s care and treatment) and payment, a health plan and their respective business associates may use or disclose the Member’s PHI to their business associates without the Member’s consent, and, as explained in the 2021 guidance from the Office of Civil Rights at HHS, to HRSN Service Providers without the Member’s consent even without having entered into a Business Associates Agreement. Although OHA follows this guidance, OHA also believes it is important to respect the privacy of their Open Card/FFS Members and therefore uses the Information Sharing Authorization Form at the commencement of the HRSN Service eligibility and approval process to provide its Open Card/FFS Members with a choice about whether their PHI is shared in determining eligibility, approving, and arranging for HRSN Services.

5. Closed Loop Referrals

a. Definitions

- (i) **“Closed Loop Referral”** means the process of exchanging information between and among CCO, FFS Program, OHA, a Member, HRSN Service Providers, and other similar organizations, to make referrals and communicate about the status of referrals for a Member.
 - This definition is scoped to be about the communication of information and not about specific methods like technology. Various methods could be used to meet this requirement such as, but not exclusively, community information exchange (CIE).
 - For purposes of HRSN, a referral loop is considered closed once the referring organization is notified of the referral status. This is to provide enough clarity around the point at which the loop needs to be closed so CCOs can operationalize the requirement without being too prescriptive.
- (ii) **“Community Information Exchange” and “CIE”** each means a software application that is utilized by a network of collaborative partners using

technology systems to exchange information for the purpose of connecting individuals to the services and supports they need. CIE functionality must include Closed Loop Referrals, a shared resource directory, and documentation of consent to the use of technology by the Member or other individual being connected to services.

- OHA is proposing a phased in approach to technology for Closed Loop Referral requirements. There will always be exceptions for Members and HRSN Service Providers who cannot or do not want to participate in technology to meet Closed Loop Referral requirements like CIE.

b. Requirement of Closed Loop Referrals

- (i) OHA expects CCOs to develop a plan of how they will conduct Closed Loop Referral processes. This means CCOs have a plan of how they will conduct referrals through various methods like email, fax, mail, and/or CIE. OHA does not expect CCOs to report to OHA on these methods. However, these methods must be clearly outlined on the public facing webpage for current and prospective HRSN Service Providers.
- (ii) HRSN Service Providers must have the ability to fulfill all obligations related to participating in the Closed Loop Referrals process (acceptance and confirmation).
- (iii) Upon authorization of HRSN Services, CCOs shall refer the HRSN Authorized Member to the HRSN Service Provider for the approved HRSN Service through a Closed Loop Referral.
- (iv) CCO must expressly require all HRSN Service Providers to provide notice to Contractor of their acceptance or denial of each HRSN Authorized Member referred to the HRSN Service (i.e., Closed Loop Referrals). HRSN Service Providers must provide CCO with the required notice within a reasonable period of time in light of the circumstances giving rise to the HRSN Services need. This notification completes the Closed Loop Referral process.

If the HRSN Connector who submitted the HRSN Request will be or would have been the HRSN Service Provider, CCOs must notify the HRSN Connector of the approval or denial of the HRSN Request through a Closed Loop Referral.

- (v) Contractor must expressly require all HRSN Service Providers to provide Contractor with confirmation that the HRSN Services have been delivered to the referred HRSN Authorized Member. In the future, this may be required through a Closed Loop Referral.

c. Technology for Closed Loop Referrals

- (i) There are no requirements of CCOs and HRSN Service Providers to use technology for Closed Loop Referrals, like CIE, in 2024. CCOs and HRSN Service Providers may elect to use technology for Closed Loop Referrals like CIE.

- (ii) HRSN Service Providers should be incentivized rather than required to participate in technology, like CIE, in 2024 which is why CCOs cannot require that technology, like CIE, be the sole referral method in 2024 Subcontracts for HRSN Service Providers.
- (iii) OHA expects CCOs to develop a plan for 2024-2026 to support and incentivize HRSN Service Providers to adopt and use technology for Closed Loop Referrals, like CIE, during Contract Years 2024-2026. Support would include things like promoting community capacity building funds to support adoption, providing technical assistance, conducting outreach and education, and engaging HRSN Service Providers in forums for feedback (e.g., governance). This plan and progress made would be reported in the CCO's annual HIT Roadmaps as required.
- (iv) Technology for Closed Loop Referrals, like CIE, may be used for processes such as identifying potentially eligible Members for HRSN Services, receiving HRSN Requests, social needs screening, sharing HRSN Eligibility Screening, service authorization, and referring Members to services.

d. Member Right to Opt Out of Technology for Closed Loop Referrals

OHA wants to support privacy and security and individuals' rights to make decisions about their data. Not all Members may want their data shared through technology.

- (i) The Member handbooks must include language that referrals for HRSN Services will be sent using Closed Loop Referrals. Member handbooks must include language that HRSN Authorized Members have the option to opt out of their data being included in technology, like CIE, and use other Closed Loop Referral processes and still receive HRSN Services.
- (ii) In the event a CCO or HRSN Service Provider uses technology (e.g., CIE) for Closed Loop Referrals (i.e., refer an HRSN Authorized Member to an HRSN Service Provider), the CCO and HRSN Service Provider must notify Members during the consent process that they have the right to opt out of their data being included in technology for Closed Loop Referrals, like CIE, and still receive HRSN Services. OHA does not need documentation that the Member was told they have the option to opt out of technology, like CIE.
- (iii) A Member must consent to participate in their data being included in technology, like CIE, and the consent is documented. This information does not need to be reported to OHA.
- (iv) If a Member opts out of their data being included in technology, like CIE, the HRSN Authorized Member's election to opt out must be documented and the CCO must also notify the applicable HRSN Service Providers of such Member's election to opt out of technology. This information does not need to be reported to OHA.

e. Proposed Approach to Technology for Closed Loop Referrals

OHA understands that increase in use of technology like CIE for Closed Loop Referrals should happen over the five-year waiver demonstration period, and we

need to allow time and provide support for HRSN Service Providers to participate.

OHA wants to support HRSN Service Providers that play a critical role in their communities including those serving Priority Populations. Regardless of supports that may be provided, some may require or desire exceptions to participating in technology like CIE. Members will always have the right to not have their data be included in technology like CIE. See *Table 2* below for details on the proposed phased approach.

The requirements in the table below have yet to be determined and OHA welcomes CCO, community-based organization, community, and Member input, especially for:

*OHA's measurement of technology for Closed Loop Referral use will focus on incentivizing equity and meeting Members' needs. OHA will align with other CCO metrics reporting where appropriate.

**Exceptions for HRSN Service Providers that play a critical role in their communities including those serving Priority Populations.

Table 2: Proposed Phased Approach to Technology for Closed Loop Referrals

CCO Contract Year	Closed Loop Referral Requirements	CCO Support & Incentives
2024	<ul style="list-style-type: none"> Define Closed Loop Referrals and CIE CCOs and HRSN Service Providers are not required to use technology like CIE CCOs cannot require technology for Closed Loop Referrals, like CIE, to be used as the sole referral method in HRSN Service Provider subcontracts but can elect to use technology like CIE 	<ul style="list-style-type: none"> CCOs to develop a plan for years 2024-2026 in how they will support and incentivize technology for Closed Loop Referrals, like CIE, adoption and use by HRSN Service Providers, including grants, technical assistance, outreach, and forums for feedback. This will be reported in the HIT Roadmaps.
2025	<ul style="list-style-type: none"> HRSN Service Providers are not required to use technology like CIE CCOs cannot require technology for Closed Loop Referrals, like CIE, to be used as the sole referral method in HRSN Service Provider subcontracts but can elect to use technology like CIE Initial measure* TBD with exceptions for Members who opt out of technology like CIE. 	<ul style="list-style-type: none"> CCOs report on progress of 2024 and any adjustments to their plan for 2025-2026 in how they will support and incentivize technology for Closed Loop Referrals, like CIE, adoption and use by HRSN Service Providers as well as any challenges or lessons learned.
2026	<ul style="list-style-type: none"> Measure* performance increases with exceptions for Members who opt out of technology like CIE While CCOs may require technology for Closed Loop Referrals, like CIE, in 	<ul style="list-style-type: none"> CCOs report on progress of 2025, their plans for 2026, and any challenges or lessons learned.

	subcontracts with HRSN Service Providers, they must allow for exceptions**.	
2027	<ul style="list-style-type: none"> • Measure* performance increases over 2026 requirements with exceptions for Members who opt out of technology like CIE • While CCOs may require technology for Closed Loop Referrals, like CIE, in subcontracts with HRSN Service Providers, they must allow for exceptions** 	<ul style="list-style-type: none"> • CCOs report on progress of 2026 and any challenges or lessons learned.

6. Other Requirements for Climate-Related Supports

a. Timeframe for Delivery of Devices

For transition populations, CCOs will be expected to deliver a device to an HRSN Authorized Member within a reasonable period of time, such as 2 to 3 weeks.

Should a device be delayed due to extraordinary circumstances that result in delivery times that exceed more than 30 days, the CCO will be expected to notify the State of the delay and inciting reason to participate in problem solving. The expectation that CCOs notify the State of delayed deliveries to Members is not to penalize CCOs, but to allow the State and CCOs to partner to meet Members' needs.

Upon obtaining information that device delivery will exceed 30 days, CCOs should send notifications of delay to the 1115 Waiver Climate Services Team:

Amelia Reynolds: amelia.reynolds@oha.oregon.gov

Josh Thompson: joshua.r.thompson@oha.oregon.gov

b. Climate Device Restrictions

The following restrictions should be followed when determining an individual member's device needs:

- (i) There is a standard limit of one device type per household among HRSN Authorized Members as the goal of the climate device is to be able to create a zone of respite in the home. However, exceptions can be made based on consideration of individual need. CCOs should use the same process employed for review for medical exception. OHA's goal is that individuals who meet the eligibility criteria and have an exceptional need receive a device.
- (ii) For devices such as heaters, AC units, and air filtration devices, devices can be used to create a clean air or warm/cool space in the home as a place of respite.
- (iii) Reviews for approval by medical exception to climate device clinical guidance must be allowed to ensure considerations of an individual's or family's specific needs. Examples of exceptions to review include requests for more than two replacement air filters during a calendar year due to residing in a region that experiences more periods of

prolonged air quality issues due to wildfire smoke. Another example is a request for two air conditioners within a household to accommodate sleeping quarters for multiple recipients who have a medical need.

- (iv) Air Conditioners – portable, standalone units are recommended for purchase. Window units are permitted but not recommended.
- (v) Space Heaters – space heaters should be rated for indoor use only and have appropriate safety features such as tip over and overheating auto shutoffs.
- (vi) Utility costs – these devices may cause an increase in utility charges; energy efficiency models should be made a priority. The Person-Centered Service Plan (PCSP) should address whether assistance may be needed to pay for utilities and the CCO care coordinators should connect individuals to resources for utility costs as needed.

CCOs should use discretion to determine when device limitations should not apply, such as in the case of moving, damage not covered by warranty, or other exceptional cases.

c. Climate Device Recommended Specifications

The following devices are recommended minimum specifications for climate devices covered by HRSN Services. These specifications are intended to create consistency in service delivery across the state. Other models, brands, and suppliers may be available with similar specifications. A device should be selected that is reflective of the individual member's need. The safe use of the device is of the highest priority.

Table 3: Climate Device Recommended Specifications

Device	Specifications	Example
Air Conditioner (ACs)	<ul style="list-style-type: none"> Recommend a standalone, portable unit (window units are not recommended) Minimum 8,000 BTUs (~400 sq/ft) EnergyStar rated - high efficiency rating Minimum 1 year warranty, 3-year warranty preferred 	FRIEDRICH Portable Air Conditioner: 8,000 BtuH, 450 to 550 sq ft, 115V AC, 5-15P
Air Filtration Devices (AFDs)	<ul style="list-style-type: none"> Must not create ozone Rated for PM2.5 AHAM certified, tested by US standards for CADR ratings HEPA filter EnergyStar rated - high efficiency rating <20lbs >300cfm CADR >200 for smoke 	GroVPure Aspen HEPA Air Cleaner for Large Rooms

Mini refrigeration units	<ul style="list-style-type: none"> • Minimum .5 Cu Ft capacity • Cools down to 36F • EnergyStar rated - high efficiency rating • No freezer compartment • Minimum 1 year warranty 	Danby Mini Fridge - 1.6 cu ft
Portable Power Supply (PPS)	<ul style="list-style-type: none"> • Emission free • Minimum 1500W, 12amp • < 50lbs • 3+ month shelf life (battery) • Note: gas generators are permitted but are not recommended. • CCOs have discretion as to determining whether a particular type of electricity-dependent device establishes a need for a PPS, however the intention is to reserve PPS devices for life-sustaining medical equipment such as a ventilator or oxygen concentrator 	GENERAC Powerstation
Space Heater	<ul style="list-style-type: none"> • Automatic Safety Shut-off System • Tip Over Protection • Low/High settings • Max surface temp <130F • Heats ~200sq/ft • Portable 	VH2 Whole Room Heater

7. Provider Qualifications

a. Provider Qualifications Applicable to All HRSN Service Providers.

The CCO must ensure that all contracted HRSN Service Providers meet the provider qualifications to provide HRSN Services to qualifying members, as listed below. However, CCOs are not required to ensure Vendors supporting the provision of HRSN Services (e.g., for climate devices) meet provider qualifications so long as the Vendors can support service delivery in accordance with service definitions as defined in this HRSN Guidance document, and related service delivery requirements in the CCO contract.

(i) HRSN Service Provider Experience and Expertise: The HRSN Service Provider must:

- Be accessible to HRSN participants, including having the operating hours and the staff necessary to meet participant need.
- Demonstrate their ability and/or experience with effectively serving at least one of OHA's Priority Populations.⁴ If needed to ensure sufficient networks of HRSN Service Providers in certain

⁴ Refer to the definition in the footnote on page 8.

areas of the state, CCOs may deem Service Providers as having adequate ability and experience based on effectively serving the diversity of the local community. HRSN Service Providers may demonstrate these abilities and/or experience through a one-time submission of, for example:

1. Providing letter(s) of support from community members being served or other entities in the community, describing the HRSN Service Provider's presence in the community and impact on individual community members and/or the community as a whole (e.g., success stories from members or other partner entities).
 2. Submitting an annual report or similar document that describes the HRSN Service Provider's relevant capabilities and activities.
 3. Other methods identified by the CCO (e.g., a statement of which communities the provider has served in the recent past).
 4. Demonstrate that it has qualified service delivery and administrative staff, as determined at CCO discretion.
- c. Provide culturally and linguistically appropriate, responsive, and trauma-informed⁵ service delivery, including by ensuring their ability to:
1. Comply with all laws applicable to their business operations as set forth in Sec. 16, Para. f of the March 2024 HRSN Amendment. This obligation requires the CCOs to provide, and to ensure the HRSN Service Providers provide: (i) language interpretation and translation services to those members who have limited English proficiency, and (ii) American Sign Language (ASL) services for to those members who have a disability that requires ASL in order to communicate.
 2. Respond to the cultural needs of the community for whom it provides services by following the National Standards for Culturally and Linguistically Appropriate Services (CLAS), to the maximum extent possible.
 3. Provide description of how cultural responsiveness and trauma informed care trainings are impacting organizational policies and staff practices.
 4. Actively exercise concerted, sustained effort that demonstrates a commitment to employ or contract with staff

⁵ "Trauma Informed" means a program, organization, or system that realizes the widespread impact of trauma and understands potential paths for recovery; recognizes the signs and symptoms of trauma in clients, families, staff, and others involved with the system; responds by fully integrating knowledge about trauma into policies, procedures, and practices; and seeks to actively resist re-traumatization.

who reflect the OHP population, including individuals with similar demographics, lived experience, background, and language fluency.

- d. Demonstrate a history of responsible financial administration via recent annual financial reports, an externally conducted audit, and/or other similar documentation.

b. HRSN Service Provider Readiness

- (i) HRSN Service Providers must meet readiness standards defined by OHA in this Guidance Document.
 - a. CCO may use operational testing, readiness reviews or other mechanisms to assess HRSN Service Provider capabilities and readiness/ability to participate.
- (ii) HRSN Service Providers must demonstrate readiness to execute the following capabilities:
 - a. Fulfilling all obligations related to participating in the Closed Loop Referral process (acceptance and confirmation or notification of denial of providing HRSN Services).
 - b. Invoicing for services as agreed upon between Contractor and HRSN Service Provider.
- (iii) HRSN Service Providers must attest to compliance with all:
 - a. Reporting and oversight requirements established by OHA and/or Contractor;
 - b. Applicable laws relating to privacy and security.
- (iv) HRSN Service Providers must enroll as HRSN Service Providers in in MMIS, OHA's electronic system that processes Medicaid claims, if not already enrolled as Providers.
 - a. This will allow HRSN Service Providers to be registered as the rendering service provider. This also is the mechanism for OHA to perform the federally-required check to determine if HRSN Service Providers are on a CMS exclusion list due to past abuse.
 - b. It will not allow HRSN Service Providers to bill OHA or see claims submitted on their behalf.
 - c. CCOs may enroll their contracted HRSN Service Providers as encounter only providers in MMIS.
- (v) OHA expects that some HRSN Service Providers may require additional assistance to participate in the HRSN initiative. Accordingly, CCOs may contract with HRSN Service Providers that require supports

to meet one or more of the HRSN Service Provider Qualifications listed in this Guidance, including, for example:

- a. An investment of community capacity building funds to build necessary systems, capabilities, and functionalities.
- b. Training and technical assistance

c. Domain-Specific Provider Qualifications

(i) **Climate.** HRSN Service Vendors of Climate-Related Supports must meet the following qualifications:

- a. HRSN Service Vendors of Climate-Related Supports must have the ability to appropriately deliver Climate-Related Supports or, when applicable, install devices in Members' homes in a reasonable timeframe. In the event a vendor does not also provide installation, Contractor shall coordinate other vendor(s) to address this need as necessary.

(ii) **Housing.** In addition to provider qualifications that apply to all HRSN Service Providers, HRSN housing services providers must:

- a. Have knowledge of principles, methods, and procedures of housing services covered under the waiver, or comparable services meant to support individuals in obtaining and maintaining stable housing.
- b. Be trained and credentialed, as needed, to provide the specific service. CCOs may use discretion in determining the appropriate level of training or licensure required for each contracted provider.
- c. Have the ability to directly meet member's needs for the activities listed in the housing service descriptions or the ability to connect members to the appropriate service provider or vendor. CCOs are expected to develop a broad network of providers to ensure service providers can meet the personal and cultural needs of their communities as appropriate.

(iii) **Nutrition.** In addition to provider qualifications that apply to all HRSN Service Providers, HRSN nutrition providers must:

- a. Have knowledge of principles, methods and procedures of the nutrition services covered under the waiver, or comparable services meant to support an individual in meeting their nutritional needs.
- b. Comply with best practice guidelines, industry standards, and all applicable federal, state, and local laws governing food safety standards.
- c. Be trained and accredited, to the extent appropriate based on nutrition industry standards, to provide the specific service.

CCOs may use discretion in determining the appropriate level of training or licensure required for each contracted provider of a HRSN nutrition service, as long as they ensure providers will act in accordance with nutrition-related national guidelines, such as the Dietary Guidelines for Americans, or evidence-based practice guidelines for specific chronic diseases and conditions. Depending on the specific service being provided, appropriate training and credentialing may entail:

1. Relevant training(s) (e.g., webinar courses provided by SNAP-Ed, CDC-approved training for the National Diabetes Prevention Program Lifestyle Coach position, or other trainings from accredited nutrition organizations) or
 2. Certification (e.g., Certified Nutrition & Wellness Educator by the American Association of Family & Consumer Sciences) or
 3. Licensure (e.g., Registered Dietitian Nutritionist).
- d. Have the ability to meet the needs of Member's personal and cultural dietary preferences. CCOs are expected to develop a network of HRSN nutrition providers that, together, are able to serve the personal and cultural needs of their communities, though no one provider must be able to meet all Members' personal and cultural dietary preferences.
- e. Have the capacity to provide services on a one-time, daily, weekly, or monthly basis, depending on the specific service's permitted frequency and Member's preference.
- f. If a nutrition service is administered by a gift card/debit card, the HRSN Service Provider must have the ability to administer and coordinate the service, including engaging with Members to explain the service, having relationships with food retailers that will accept payment, and monitoring and overseeing use of the cards.

(iv) **Outreach and Engagement.** In addition to provider qualifications that apply to all HRSN Service Providers, HRSN Outreach and Engagement service providers must:

- a. Have knowledge of principles, methods, and procedures of these services or comparable services meant to outreach to and engage the populations covered under the waiver and connect them to benefits and services to meet their needs. and capacity to carry out the responsibilities outlined in the Outreach and Engagement service definition. CCOs may use discretion in determining whether a provider can sufficiently provide this service.
- b. Have knowledge of the following:
 1. Cultural specificity and responsiveness approaches

2. Community outreach and engagement best practices
 3. Basic eligibility and enrollment policies and practices for OHP, the HRSN program, and Federal and state entitlements and benefits including SNAP, WIC, TANF, Social Security, Social Security Disability, and Veterans Affairs benefits, and other federal and state housing programs.
 4. Local community resources for supporting basic needs such as access to shower, laundry, shelter, and food.
- c. Excellent oral communication skills with the ability to explain complex information to individuals—including those in the OHA HRSN Priority Populations — in an understandable, trauma-informed, and culturally responsive way.
 - d. Ability to maintain strict confidentiality and handle sensitive information appropriately.

8. HRSN Non-Risk Settlement Procedure

OHA will be using mixture of a manual and automatic payment processes to reimburse CCOs for the services they've provided through a non-risk arrangement. OHA encourages CCOs to start submitting encounter data based on the billing guidance to OHA starting March 1, 2024; however, encounter data will only be required once OHA notifies CCOs via administrative notice to start submitting encounter data with at least 90 days prior notice to start the automatic process of HRSN payment with encounter data.

a. Manual Payment Process

The following details the manual process for payment

- (i) **Non-risk Service Manual Payment Process:** On August 30, 2024, CCOs will submit a HRSN settlement template of HRSN Services paid to HRSN Service Providers and vendors with all the required data elements on the billing guidance, which includes member information, CCO internal prior authorization numbers and paid amounts that meet the fee schedule parameters. This will include all HRSN Services that are provided between March to June 2024. The settlement will be posted to the CCO contract forms website. OHA will communicate additional manual process deadlines at least 90 days prior to submission.

b. Automatic Payment Process

The following details the automatic process for payment

- (ii) **Non-risk Service Automatic Payment Process:** Once CCOs are notified via administrative notice of the automatic payment process effective date, CCOs will be required to submit HRSN encounter data as specified by the billing guidance to OHA. HRSN Service Providers must receive payment prior to a CCO submitting an HRSN encounter to OHA for reimbursement. The automatic process in MMIS is currently

being developed and the following general outline is subject to change of the process:

- a. HRSN Service Providers or HRSN Vendors invoice CCOs and report required billing elements to CCO
- b. CCOs reject or adjudicate payment
- c. CCOs create an encounter claim with required billing elements and submit to OHA
- d. OHA processes submitted encounters and typical acceptance/denial process occurs
- e. OHA will take all clean encounters on a weekly basis and batch for payment
- f. The following week a payment will be issued to CCOs

Please note, this is the final process after referral and authorization has occurred. A general flow of encounter data and payment is included in [Appendix F](#).

c. Administrative Payment Process

OHA will be paying CCOs for their administrative responsibilities using two payment methods. OHA will request, on at least a biannual basis, CCOs submit administrative cost information as specified by the settlement template posted to the CCO contract forms website.

- (i) **Capitation:** OHA will be paying CCOs through capitation a per-member, per-month for CY2024 for the HRSN administrative services that are typically fixed. This will include the consideration of managing the distribution and administration of Community Capacity-Building Funds (CCBF).
- (ii) **Add-on to non-risk services payment process:** OHA acknowledges that additional administrative resources will be needed if more services are provided. OHA will also pay and allow a certain percentage, or dollar add, to pay for administrative costs be added to HRSN Services as defined in the fee schedule. This per-service administrative payment will consider variable costs.
- (iii) OHA will review HRSN direct administrative expenses as compared with administrative funding received by CCOs on an annual basis based on HRSN Covered Services provided and review of administrative expenses against available revenue. The review may result in a change in the administrative funding on a retroactive basis.

d. Billing guidance and required elements

OHA will require either through the manual or automatic payment process, CCOs collect and report the following data. This list is subject to change:

- (i) Oregon Medicaid provider enrollment number,
- (ii) Member information,
- (iii) Rendering provider organization,
- (iv) Date(s) of service,

- (v) Location of service provision,
- (vi) A description of HRSN Services furnished,
- (vii) Applicable service codes as described in the HRSN Fee Schedule, including appropriate modifiers,
- (viii) If the HRSN Service provided is a Climate-Related Support, a description of the support device provided,
- (ix) If the HRSN Service provided is an Outreach & Engagement Service, a description of the activity and duration,
- (x) HRSN diagnosis code information, and
- (xi) Any other information as required by the State. This information must be made available to the State upon request.
- (xii) If installation support is provided, such as for an AC, CCOs should ensure a signature is collected from the Member to confirm receipt of service, as applicable.

e. HRSN Fee Schedule

- i. [HRSN Climate Device Fee Schedule, Effective March 1, 2024](#)
- ii. [HRSN Climate Device Fee Schedule, Effective July 1, 2024](#)

9. HRSN Data Collection and Reporting

OHA is requiring CCOs gather information from providers and members as specified in the HRSN Eligibility Screening requirements and billing guidance.,. CCOs must document the results of the HRSN Eligibility Screening, including at minimum, the information listed below:

- a. The Member's OHP Medicaid Number,
- b. The HRSN Covered Population to which they belong,
- c. The Member's HRSN Climate Device Clinical Risk Factor(s),
- d. The Member's HRSN Climate Related Device Service(s) authorized,
- e. The Member's HRSN Climate Device Social Risk Factor(s), and
- f. Whether the Member is receiving the same or substantially similar service as the identified HRSN Services need from a local, state, or federally funded program.

Quarterly, and as reasonably requested by OHA from time to time and as requested by CMS, Contractor shall submit the information listed in (a)-(d) above in this section to OHA using the HRSN specific tab on Exhibit L. The Exhibit L Template is included on the [CCO Forms webpage](#).

Additionally, on a quarterly basis, CCOs must report HRSN Service denials on the Grievance and Appeals Log.

10. Health-Related Services (HRS) vs. Health-Related Social Needs (HRSN) Benefit

Climate devices and related services that are not covered as HRSN Services or devices could be Health-Related Services. Once some members become eligible for covered HRSN devices, CCOs should only report HRS spending on climate devices that were not provided to members eligible for HRSN devices. Additionally, when reporting in Report L6.21 of Exhibit L, CCOs should explicitly state in the spending description (Column C) that the HRS spending was not used to provide devices for members eligible for the HRSN device benefit.

If CCOs bulk purchase climate devices, but do not distribute all devices within the HRS reporting period, the CCO may still report the devices as HRS flexible services. The CCO can only do this for the devices that will be stored until they are provided to members who are not eligible for the HRSN device benefit. When reporting this in Report L6.21 of Exhibit L, the CCO must attest to this in the spending description (Column C).

In addition to using HRS for climate devices, CCOs may also use HRS to address the member's increased utility costs associated with using a climate device. Similar to reporting for the climate devices, the CCO will need to attest to the utility costs not being covered HRSN benefits for those members in the spending description (Column C).

Additional information about HRS and CCO HRS guidance is available on [OHA's HRS website](#). For HRS specific questions, please contact the HRS team at Health.RelatedServices@oha.oregon.gov.

11. SHARE (Supporting Health for All through Reinvestment) Initiative vs. HRSN Benefit

CCOs are not allowed to use SHARE funds for any covered services, including HRSN benefits for eligible members. CCOs may only use SHARE funds on HRSN-related supports and services 1) prior to them becoming covered benefits, or 2) for populations not eligible for the HRSN benefit. In addition, SHARE funds may not be used for climate devices for any population.

However, CCOs could likely use SHARE funds to support capacity building or capital expenses for an organization providing a variety of health-related social needs including climate-related needs. The CCO would need to describe how the activities fit into one of the SDOH-E domains or is part of permanent supportive housing.

Additional information about SHARE is available on [OHA's SHARE Initiative webpage](#). For SHARE-specific questions, please contact Transformation.Center@odhsoha.oregon.gov.

Appendices

Appendix A: HRSN Payment Responsibility⁶

Plan Type	HRSN	Physical Health	Behavioral Health	Dental
CCO-A	CCO	CCO	CCO	CCO
CCO-B	CCO	CCO	CCO	FFS OHA
CCO-E	FFS OHA	FFS OHA	CCO	FFS OHA
CCO-F	FFS OHA	FFS OHA	FFS OHA	CCO
CCO-G	FFS OHA	FFS OHA	CCO	CCO
None	FFS OHA	FFS OHA	FFS OHA	FFS OHA

⁶ Refer to OAR [410-141-3826\(1\)\(c\)](#).

Appendix B: HRSN Covered Populations

Covered Population	Population Definition
Adults and youth discharged from an Institution for Mental Diseases (IMD)	Members who have been discharged from an IMD (as such term is defined in 42 CFR § 435.1010) within the last 365 days. Subject to Ex. B, Part 2, Sec. 15 of the Contract, eligibility for the HRSN Services shall expire on the 366th calendar day after discharge from the IMD.
Adults and youths released from incarceration	Members released from incarceration within the past 365 calendar days, including those released from state and federal prisons, local correctional facilities, juvenile detention facilities, Oregon Youth Authority closed custody corrections, or tribal correctional facilities. Subject to Ex. B, Part 2, Sec. 15 of the Contract, eligibility for HRSN Services shall expire on the 366th calendar day after release from a carceral facility.
Individuals involved with child welfare	Members who are currently or have previously been involved in Oregon's Child Welfare system including members who are currently or have previously been: <ul style="list-style-type: none"> • In foster/substitute care or the recipient of adoption of guardianship assistance; • Served on an in-home plan; or • The subject of an open child welfare case.
Individuals transitioning to Dual Status	Members enrolled in Medicaid who are transitioning to dual status with Medicare and Medicaid coverage. Members shall be included in HRSN Covered Population for the ninety (90) calendar days preceding the date Medicare coverage is to take effect and 270 calendar days after it takes effect.
Individuals who are homeless or at risk of becoming homeless	Members who meet the definition of 1) homeless as defined by the U.S. Department of Housing and Urban Development (HUD) in 24 CFR 91.5. or 2) at-risk of becoming homeless defined as a) having an income that is 30% or less than the area median income where the individual resides according to HUD's 2024 data , b) lacks sufficient resources or support networks to prevent homelessness, and c) meets a Clinical Risk Factor.

Appendix C: Qualifying IMD Facilities

List of Institutions for Mental Diseases (IMD) facilities for health-related social needs (HRSN) covered population identification									
Provider Name	Facility Name	Address	City	State	Zip Code	County	Capacity	MMIS	NPI
ADAPT, Inc. DBA Compass Behavioral Health - CMHP	ADAPT - The Crossroads	3099 NE Diamond Lake Blvd.	Roseburg	OR	97470	Douglas	22	500791533	1720010549
Addictions Recovery Center, Inc.	Addictions Recovery Center	16 South Peach	Medford	OR	97501	Jackson	28	500764215	1346282035
BestCare Treatment Services	Klamath Basin Recovery Services	2555 Main Street	Klamath Falls	OR	97601	Klamath	40	500738089	1073750048
BestCare Treatment Services	BestCare Recovery Center	676 NE Maple Avenue	Redmond	OR	97756	Deschutes	18	500609571	
Bridgeway Recovery Services, Inc.	Bridgeway Recovery Services, Inc. Detox	3321 Harold Drive NE	Salem	OR	97305	Marion	27	500609571	
Cedar Hills Hospital	Cedar Hills Hospital	10300 SW Eastridge Street	Portland	OR	97225	Multnomah		031591 or 03916	
Central City Concern	Central City Concern-Hooper Detoxification Center	1535 North Williams Avenue	Portland	OR	97227	Multnomah	60	500708116	

Central City Concern	Central City Concern - Letty Owings Center	2545 NE Flanders Street	Portland	OR	97232	Multnomah	56	500668658	1679832315
CODA, Inc.	CODA - Gresham Recovery Center	1427 SE 182nd Avenue	Portland	OR	97233	Multnomah	71	500808310	
CODA, Inc.	CODA - Tigard Recovery Center	10362 SW McDonald Street	Tigard	OR	97224	Washington	21	500648292	1437213865
E.O.R.C.	Eastern Oregon Alcoholism Foundation- E.O.R.C.	216 SW Hailey Avenue	Pendleton	OR	97801	Umatilla	36	500695723	
Family Recovery, Inc.	Recovery Wellness Center	404 N.W. 23rd Street	Corvallis	OR	97330	Benton	30	500655335	
Fora Health	Fora Health Adult Treatment Program	10230 SE Cherry Blossom Drive	Portland	OR	97216	Multnomah	71	208991	1245378546
Fora Health	Fora Health - Withdrawal Management	10230 SE Cherry Blossom Drive	Portland	OR	97216	Multnomah	24	500812005	1245378546
Hazelden Betty Ford Foundation	Hazelden Betty Ford Foundation	1901 Esther Street	Newberg	OR	97132	Yamhill	86	500724136	
Kaiser Foundation Hospitals	Brookside Center	10180 SE Sunnyside Road	Clackamas	OR	97015	Clackamas	20	500682895	

Lifeways, Inc. CMHP	Lifeways, Inc. - Recovery Center	686 NW 9th Street	Ontario	OR	97914	Malheur	60	500649011	
LifeWorks NW	Lifeworks NW - Project Network	3655 NE Garfield Avenue	Portland	OR	97212	Multnomah	34	500812321	
Native American Rehabilitation Association of the N.W.	Native American Rehab Assoc. of the NW- Youth	620 NE 2nd Street	Gresham	OR	97030	Multnomah	24	209106	
Native American Rehabilitation Association of the N.W.	Native American Rehabilitation Assoc. of the NW	17645 NW St. Helens Highway	Portland	OR	97213	Multnomah	70	209106	
New Directions Northwest, Inc.	NDNW Baker House - Women's Program	3610 Midway Drive	Baker City	OR	97814	Baker	24	014886	1235124462
New Directions Northwest, Inc.	NDNW Baker House- Men's Program	3700 Midway Drive	Baker City	OR	97814	Baker	24	014886	1235124462
OnTrack, Inc.	OnTrack, Inc. - HOME/Mom's Program	3397 Delta Waters Road	Medford	OR	97501	Jackson	45	500759909	1881685097
Oregon State Hospital - Salem	Oregon State Hospital	2600 Center Street	Salem	OR	97301	Marion	90	192989	
Oregon State Hospital - Junction City	Oregon State Hospital	29398 Recovery Way	Junction City	OR	97448	Lane	75	192989	

Rimrock Trails Treatment Services	Rimrock Trails Treatment Services	1333 NW 9th Street	Prineville	OR	97754	Crook	24	136460	1194873406
Serenity Lane	Serenity Lane Detox	1 Serenity Lane	Coburg	OR	97408	Lane	22	195172	1104934892
Serenity Lane	Serenity Lane - Coburg	1 Serenity Lane	Coburg	OR	97408	Lane	96	195172	1104934892
Transformations Wellness Center	Transformation Wellness Center	3647 Highway 39	Klamath Falls	OR	97603	Klamath	25	274254	1407065956
VOAOR - Volunteers of America Oregon	VOAOR - Men's Residential Center	2318 NE Martin Luther King Jr. Blvd	Portland	OR	97212	Multnomah	54	500677675	
VOAOR - Volunteers of America Oregon	VOAOR - Women's Residential Center	200 SE 7th Avenue	Portland	OR	97214	Multnomah	43	500661488	1376611418
Willamette Family, Inc.	Willamette Family, Inc. - Women's Program	687 Cheshire Avenue	Eugene	OR	97402	Lane	57	8891	1376546291
Willamette Family, Inc.	Willamette Family, Inc. - Buckley House	605 W 4th	Eugene	OR	97402	Lane	22	8891	1376546291
Willamette Family, Inc.	Willamette Family, Inc. - Carlton House	1420 Green Acres Road	Eugene	OR	97408	Lane	27	8891	1376546291

Appendix D: Qualifying Carceral Facilities

List of carceral facilities for health related social needs (HRSN) covered population identification	
Facility	Facility Type
Tillamook Youth Correctional Facility (40 beds)	Oregon Youth Authority (OYA) Closed Custody Corrections
Camp Tillamook Youth Transitional Facility (20 beds)	Oregon Youth Authority (OYA) Closed Custody Corrections
MacLaren Youth Correctional Facility (236 beds)	Oregon Youth Authority (OYA) Closed Custody Corrections
Oak Creek Youth Correctional Facility (50 beds)	Oregon Youth Authority (OYA) Closed Custody Corrections
Jackie Winters Transition Program (40 beds)	Oregon Youth Authority (OYA) Closed Custody Corrections
Camp Florence Youth Transitional Facility (20 beds)	Oregon Youth Authority (OYA) Closed Custody Corrections
Rogue Valley Youth Correctional Facility (80 beds)	Oregon Youth Authority (OYA) Closed Custody Corrections
Camp Riverbend Youth Correctional Facility (25 beds)	Oregon Youth Authority (OYA) Closed Custody Corrections
Eastern Oregon Youth Correctional Facility (40 beds)	Oregon Youth Authority (OYA) Closed Custody Corrections
Deschutes County (16 beds)	Juvenile Detention Facility
Douglas County (32 beds)	Juvenile Detention Facility
Jackson County (24 beds)	Juvenile Detention Facility
Josephine County (14 beds)	Juvenile Detention Facility
Lane County (16 beds)	Juvenile Detention Facility
Linn – Benton (20 beds)	Juvenile Detention Facility
8. Marion County (32 beds)	Juvenile Detention Facility
Multnomah County (64 beds)	Juvenile Detention Facility
NORCOR – The Dalles (32 beds)	Juvenile Detention Facility
Yamhill County (24 beds)	Juvenile Detention Facility
Klamath County (16 beds)	Juvenile Detention Facility
Coffee Creek Correctional Facility (CCCCF)	State Prison
Columbia River Correctional Institute (CRCI)	State Prison
Deer Ridge Correctional Institution (DRCI)	State Prison
Eastern Oregon Correctional Institution (EOCI)	State Prison
Oregon State Correctional Institution (OSCI)	State Prison
Oregon State Penitentiary (OSP)	State Prison
Powder River Correctional Facility (PRCF)	State Prison
Santiam Correctional Institution (SCI)	State Prison

Snake River Correctional Institution (SRCI)	State Prison
South Fork Forest Camp (SFFC)	State Prison
Two Rivers Correctional Institution (TRCI)	State Prison
Warner Creek Correctional Facility (WCCF)	State Prison
FCI Sheridan Camp: Medium security prison for male inmates	Federal Prison
Baker	County jail
Benton	County jail
Clackamas CCJ	County jail
Clatsop	County jail
Columbia	County jail
Coos	County jail
Crook	County jail
Curry	County jail
Deschutes	County jail
Douglas	County jail
Grant	County jail
Harney	County jail
Jackson	County jail
Jefferson	County jail
Josephine	County jail
Klamath	County jail
Lake	County jail
Lane	County jail
Lincoln	County jail
Linn	County jail
Malheur	County jail
Marion	County jail
Multnomah County Jail (2)	County jail
NORCOR	County jail
Polk	County jail
Tillamook	County jail
Umatilla	County jail
Union	County jail
Washington County	County jail
Yamhill	County jail
Any municipal jail	Municipal jail

Appendix E. HRSN Eligibility Screening Template

Health-Related Social Needs Service Eligibility Screening Template

CLIMATE-RELATED SERVICES

Instructions

This HRSN Eligibility Screening template contains the information required to make an HRSN eligibility determination. Health plans must document the required elements of the Eligibility Screening in its entirety and resulting HRSN Service(s) authorization or denial. Eligibility information resulting in an authorization of services must be reported to OHA using the HRSN specific tabs on Exhibit L. Eligibility screening resulting in a denial must be reported to OHA on the Grievance and Appeals Log.

Health plans are responsible for obtaining additional information, if needed, to complete the HRSN Eligibility Screening. Health plans may use information in their own records, obtain the missing information directly from the Member requesting the HRSN Service(s), and, when permitted by the Member, collect only the relevant and appropriate information from the HRSN Connector who submitted the HRSN Request.

There is a standard limit of one climate device type per household. However, exceptions may be made based on individual circumstances. When multiple family members are requesting HRSN climate service(s) or associated HRSN Outreach and Engagement Services, a separate HRSN Eligibility Screening must be completed for each individual.

Member Information

Required Information	
Full Legal Name	[first] [middle] [last]
Medicaid ID	
Date of Birth	
Additional optional Information	
Preferred name	
Pronouns	
Language and accessibility needs	
Preferred Contact Information	

Member Attestation and Authorization

Check each box to confirm that the Member has:

- ☐ Attested if they are receiving the same or a substantially similar service as the identified HRSN Services need from a local, state, or federally funded program.
- ☐ Agreed to receive authorized HRSN Services.
- ☐ Agreed to be contacted for essential communications related to delivery of HRSN Services or member rights and responsibilities.
- ☐ Attested that they can safely use the climate device in their primary place of residence, as applicable.
- ☐ Member has requested to not use information technology methods of personal data sharing, such as Community Information Exchange

For Open Card Members:

- ☐ Signed the Information Sharing Authorization form; or
- ☐ Declined to sign the Information Sharing Authorization form

ELIGIBILITY SCREENING

HRSN Transition Populations criteria

The HRSN Covered Population to which the Member belongs:

- ☐ Discharged from an Institution of Mental Diseases (IMD) within the past 365 days.
- ☐ Released from a state or federal prison, local correctional facility, juvenile detention facility, Oregon Youth Authority closed custody correction, tribal correctional facility, or immigration detention facility within the past 365 days.
- ☐ Current or past involvement in Oregon's Child Welfare system through being in foster/substitute care; or the recipient of adoption or guardianship assistance; or served on an in-home plan; or the subject of an open child welfare case.
- ☐ Transitioning to dual Medicaid/Medicare status: eligible for HRSN Services during the 90 days (3 months) preceding the date Medicare coverage is to take effect and the 270 days (9 months) after it takes effect.
- ☐ Meets 24 CFR § 91.5 definition of homeless or at risk of homelessness, as used by the U.S. Department of Housing and Urban Development (HUD)

Climate Service Needs and Climate Device Clinical Risk Factor Criteria

Please fill out the following table with the specific clinical device needs, authorization determination, and corresponding qualifying clinical criteria. Include the date of climate device authorization or reason for denial as applicable.

Outreach and Engagement Services	Presumed Eligible for HRSN Services
<input type="checkbox"/> Authorized Date of service authorization:	<input type="checkbox"/> Yes <input type="checkbox"/> No
<input type="checkbox"/> Denied Reason for Denial:	
<input type="checkbox"/> Not requested	

Climate Devices	Qualifying Clinical Criteria by Device (current medical condition, active in past 12mo)
-----------------	--

Air Conditioner	
<input type="checkbox"/> Authorized Date of service authorization:	<input type="checkbox"/> Pregnant and currently has, has a history of, or is at risk for at least one of the specified clinical conditions detailed in the CMS approved HRSN services protocol
<input type="checkbox"/> Denied Reason for Denial:	<input type="checkbox"/> Child less than 6 years of age and currently has, has a history of, or is at risk for at least one of the specified clinical conditions detailed in the CMS approved HRSN services protocol
<input type="checkbox"/> Not requested	<input type="checkbox"/> Adult 65 years and older and currently has, has a history of, or is at risk for at least one of the specified clinical conditions detailed in the CMS approved HRSN services protocol
	<input type="checkbox"/> Bipolar and related disorders
	<input type="checkbox"/> Major depressive disorder, with an acute care need in the past 12 months including a suicide attempt, crisis services utilization (emergency department, mobile crisis team, etc.), acute psychiatric hospitalization, or residential treatment.
	<input type="checkbox"/> Schizophrenia spectrum and other psychotic disorders
	<input type="checkbox"/> One or more of the following substance use disorders: alcohol use disorder, hallucinogen use disorders, inhalant use disorder, opioid use disorder, stimulant use disorder
	<input type="checkbox"/> Major neurocognitive disorder
	<input type="checkbox"/> Chronic lower respiratory condition: chronic obstructive pulmonary disease (COPD), asthma requiring regular use of

	asthma controlling medications, restrictive lung disease, fibrosis, chronic bronchitis, bronchiectasis
	<input type="checkbox"/> Chronic cardiovascular disease, including cerebrovascular disease and heart disease
	<input type="checkbox"/> Spinal cord injury
	<input type="checkbox"/> Any sensory, physical, intellectual, or developmental disability that increases health risks during extreme climate events
	<input type="checkbox"/> Receiving in-home hospice
	<input type="checkbox"/> Previous heat-related or cold-related illness requiring urgent or acute care, e.g., emergency room and urgent care visits
	<input type="checkbox"/> Chronic kidney disease
	<input type="checkbox"/> Diabetes mellitus, requiring any medication, oral or insulin
	<input type="checkbox"/> Multiple Sclerosis
	<input type="checkbox"/> Parkinson's disease
	<input type="checkbox"/> Approval by review for medical exception due to:

Air Filtration Device <input type="checkbox"/> Authorized Date of service authorization: <input type="checkbox"/> Denied Reason for Denial: <input type="checkbox"/> Not requested	<input type="checkbox"/> Pregnant and currently has, has a history of, or is at risk for at least one of the specified clinical conditions detailed in the CMS approved HRSN services protocol
	<input type="checkbox"/> Child less than 6 years of age and currently has, has a history of, or is at risk for at least one of the specified clinical conditions detailed in the CMS approved HRSN services protocol
	<input type="checkbox"/> Adult 65 years and older and currently has, has a history of, or is at risk for at least one of the specified clinical conditions detailed in the CMS approved HRSN services protocol
	<input type="checkbox"/> Bipolar and related disorders
	<input type="checkbox"/> Major depressive disorder, with an acute care need in the past 12 months including a suicide attempt, crisis services utilization (emergency department, mobile crisis team, etc.), acute psychiatric hospitalization, or residential treatment.
	<input type="checkbox"/> Schizophrenia spectrum and other psychotic disorders
	<input type="checkbox"/> One or more of the following substance use disorders: alcohol use disorder, hallucinogen use disorders, inhalant use disorder, opioid use disorder, stimulant use disorder
	<input type="checkbox"/> Major neurocognitive disorder
	<input type="checkbox"/> Chronic lower respiratory condition: chronic obstructive pulmonary disease (COPD), asthma requiring regular use of asthma controlling medications, restrictive lung disease, fibrosis, chronic bronchitis, bronchiectasis
	<input type="checkbox"/> Chronic cardiovascular disease, including cerebrovascular disease and heart disease

	<input type="checkbox"/> Spinal cord injury
	<input type="checkbox"/> Any sensory, physical, intellectual, or developmental disability that increases health risks during extreme climate events
	<input type="checkbox"/> Receiving in-home hospice
	<input type="checkbox"/> Home oxygen use: home oxygen, oxygen concentrator, home ventilator
	<input type="checkbox"/> Approval by review for medical exception due to:

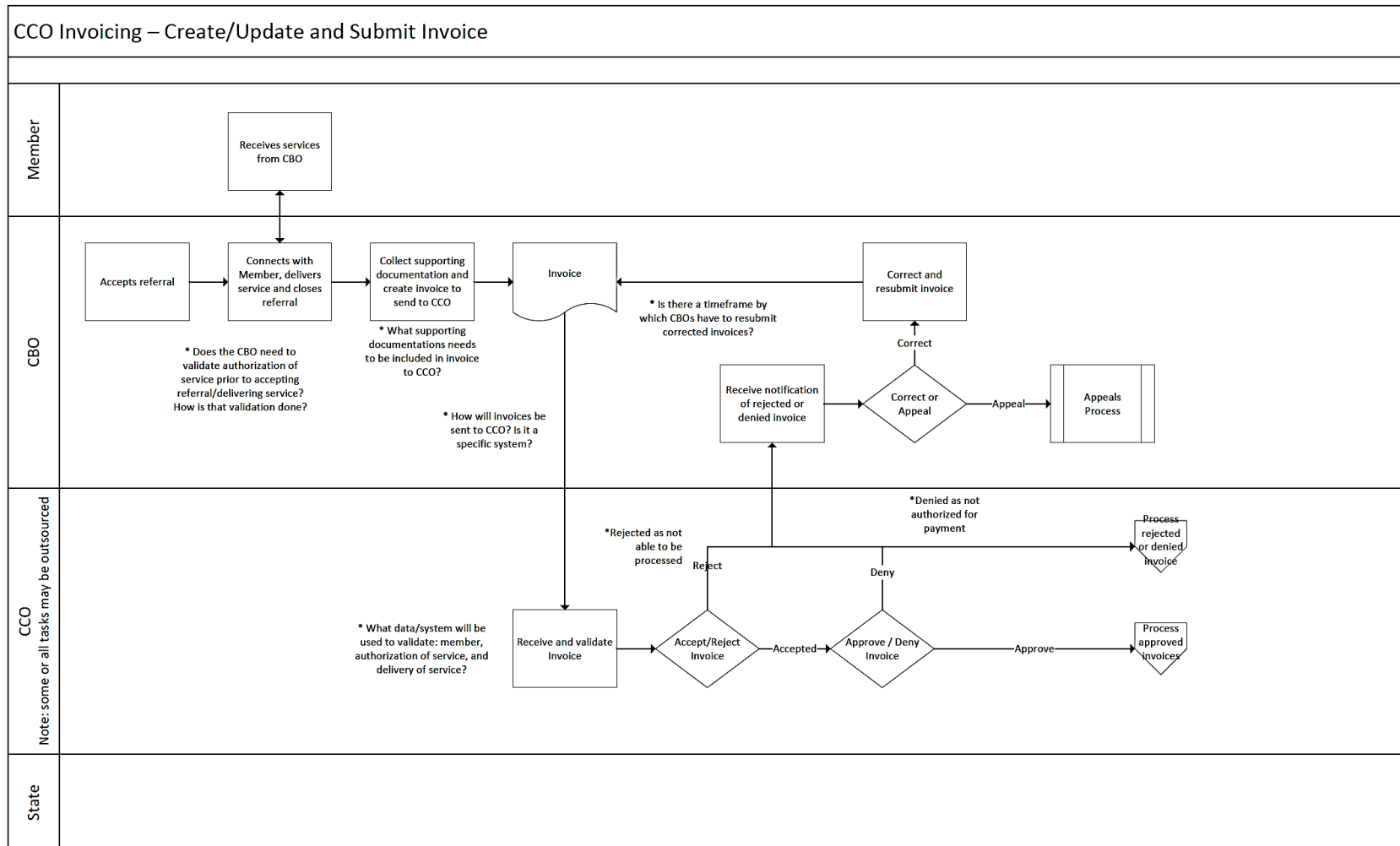
Heater <input type="checkbox"/> Authorized Date of service authorization: <input type="checkbox"/> Denied Reason for Denial: <input type="checkbox"/> Not requested	<input type="checkbox"/> Pregnant and currently has, has a history of, or is at risk for at least one of the specified clinical conditions detailed in the CMS approved HRSN services protocol
	<input type="checkbox"/> Child less than 6 years of age and currently has, has a history of, or is at risk for at least one of the specified clinical conditions detailed in the CMS approved HRSN services protocol
	<input type="checkbox"/> Adult 65 years and older and currently has, has a history of, or is at risk for at least one of the specified clinical conditions detailed in the CMS approved HRSN services protocol
	<input type="checkbox"/> Bipolar and related disorders
	<input type="checkbox"/> Major depressive disorder, with an acute care need in the past 12 months including a suicide attempt, crisis services utilization (emergency department, mobile crisis team, etc.), acute psychiatric hospitalization, or residential treatment.
	<input type="checkbox"/> Schizophrenia spectrum and other psychotic disorders
	<input type="checkbox"/> One or more of the following substance use disorders: alcohol use disorder, hallucinogen use disorders, inhalant use disorder, opioid use disorder, stimulant use disorder
	<input type="checkbox"/> Major neurocognitive disorder
	<input type="checkbox"/> Chronic lower respiratory condition: chronic obstructive pulmonary disease (COPD), asthma requiring regular use of asthma controlling medications, restrictive lung disease, fibrosis, chronic bronchitis, bronchiectasis
	<input type="checkbox"/> Chronic cardiovascular disease, including cerebrovascular disease and heart disease
	<input type="checkbox"/> Spinal cord injury
	<input type="checkbox"/> Any sensory, physical, intellectual, or developmental disability that increases health risks during extreme climate events
	<input type="checkbox"/> Receiving in-home hospice
	<input type="checkbox"/> Previous heat-related or cold-related illness requiring urgent or acute care, e.g., emergency room and urgent care visits
	<input type="checkbox"/> Chronic kidney disease

	<input type="checkbox"/> Diabetes mellitus, requiring any medication, oral or insulin
	<input type="checkbox"/> Multiple Sclerosis
	<input type="checkbox"/> Parkinson's disease
	<input type="checkbox"/> Approval by review for medical exception due to:

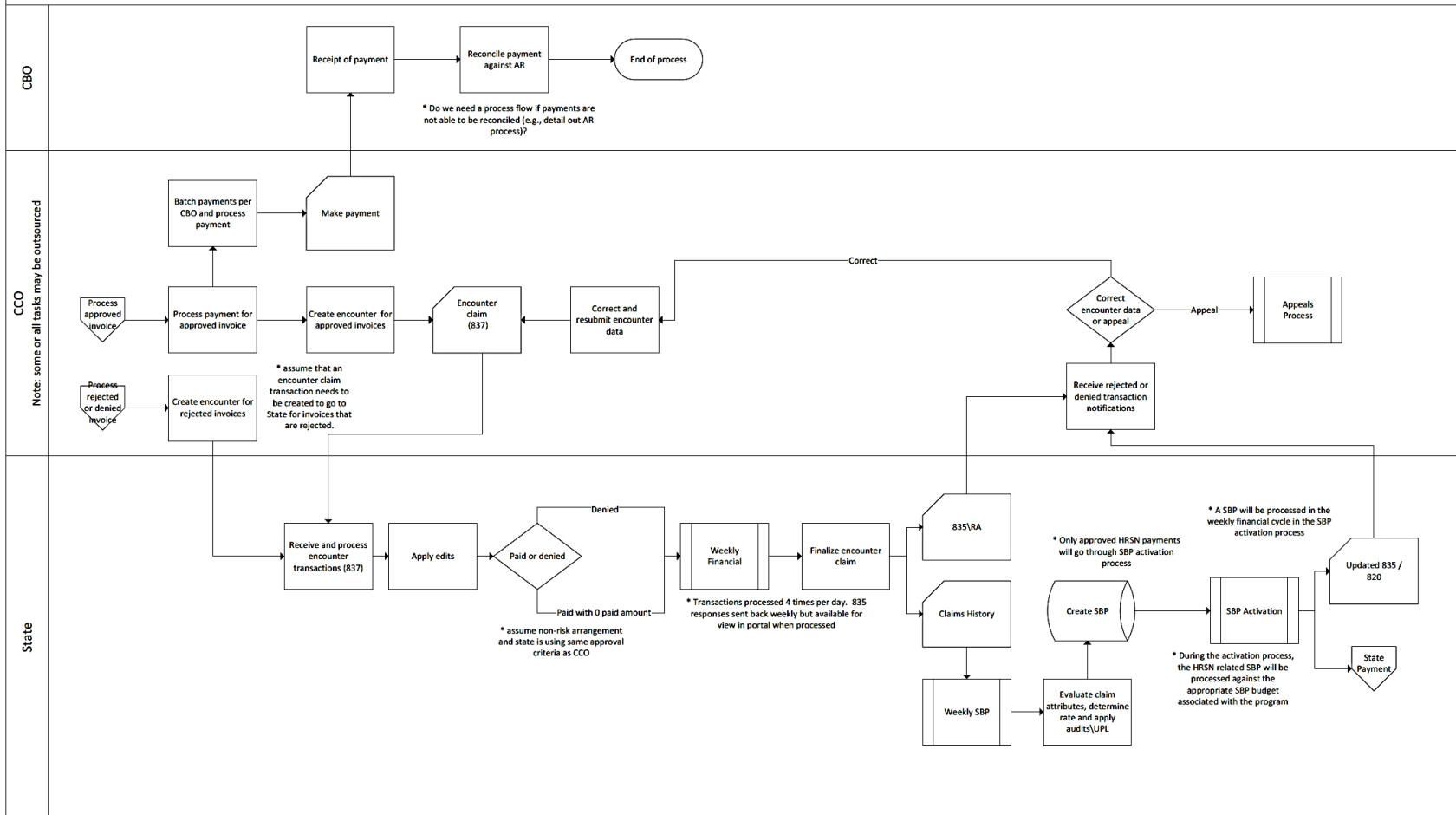
Mini-refrigeration Unit <input type="checkbox"/> Authorized Date of service authorization: <input type="checkbox"/> Denied Reason for Denial: <input type="checkbox"/> Not requested	<input type="checkbox"/> Medications requiring refrigeration. Examples medications for diabetes mellitus, glaucoma, and asthma; TNF inhibitors
	<input type="checkbox"/> Enteral or parenteral nutrition
	<input type="checkbox"/> Approval by review for medical exception due to:

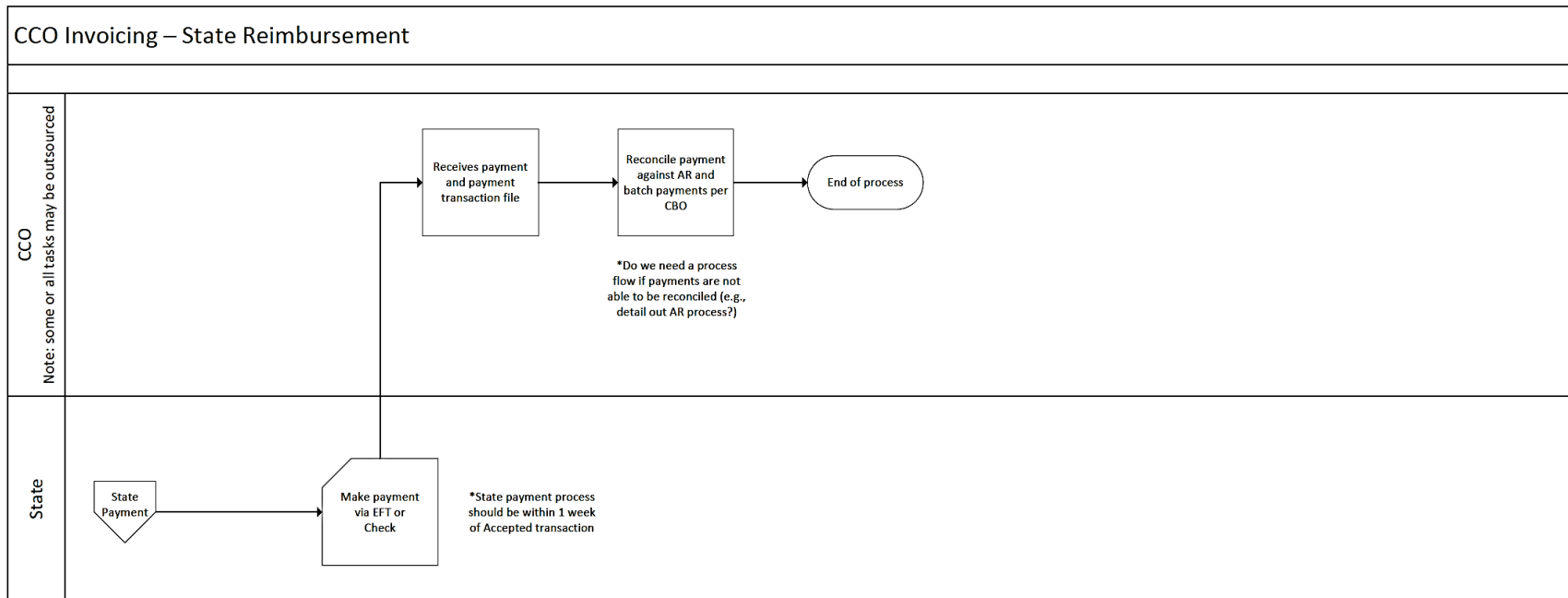
Portable Power Supply <input type="checkbox"/> Authorized Date of service authorization: <input type="checkbox"/> Denied Reason for Denial: <input type="checkbox"/> Not requested	<input type="checkbox"/> Durable medical equipment (DME) requiring electricity for use. Examples include but are not limited to oxygen delivery systems, including concentrators, humidifiers, nebulizers, and ventilators; intermittent positive pressure breathing machines; cardiac devices, in home dialysis and automated peritoneal dialysis; feeding pumps, IV infusions; suction pumps; power wheelchair and scooter; lift systems and electric beds; breast pumps for first 6mo post-partum; other DME medically required for sustaining life.
	<input type="checkbox"/> Assistive technologies requiring electricity and necessary for communication or ADLs.
	<input type="checkbox"/> Approval by review for medical exception due to:

Appendix F: Automatic Payment Process



CCO Invoicing – Process Invoice, Render Payment, and Create Encounter





Appendix G: HRSN Guidance Document Version Tracker

Version	Date sent to CCOs
1. CCO HRSN Guidance Document (draft for review)	9/25/23
2. CCO HRSN Guidance Document (draft for review)	1/25/24
3. CCO HRSN Guidance Document for 3/1/24 Implementation	2/27/24
4. CCO HRSN Guidance Document for 3/1/24 Implementation (updated)	6/7/24