

---

# Network Adequacy Standards: Proposed Changes for 2023/2024

January 10th, 2023

**Presented by:**

Andrea Smith & Carrie Williamson

Quality Assurance and CCO Contract Oversight Unit



# Topics for Conversation and Consideration

OHA is seeking feedback and guidance on the following:

- Proposed updates to geographic designations (i.e. what will we consider urban/rural/frontier);
- Provider types OHA will monitor and require that CCOs will monitor;
- Updates to time and distance standards based on urban/rural/frontier designations and provider type;
- Timelines for implementing the proposed changes.

# A Note About the Status of the Proposed Changes

These are not the finalized standards to be proposed by OHA. The intent of this presentation is to inform and solicit feedback on the general approach OHA has taken.

If these slides are shared, please ensure that they are shared in their entirety. Any questions or comments can be directed to [HSD.QualityAssurance@odhsoha.oregon.gov](mailto:HSD.QualityAssurance@odhsoha.oregon.gov)

# Updated Geographic Designations

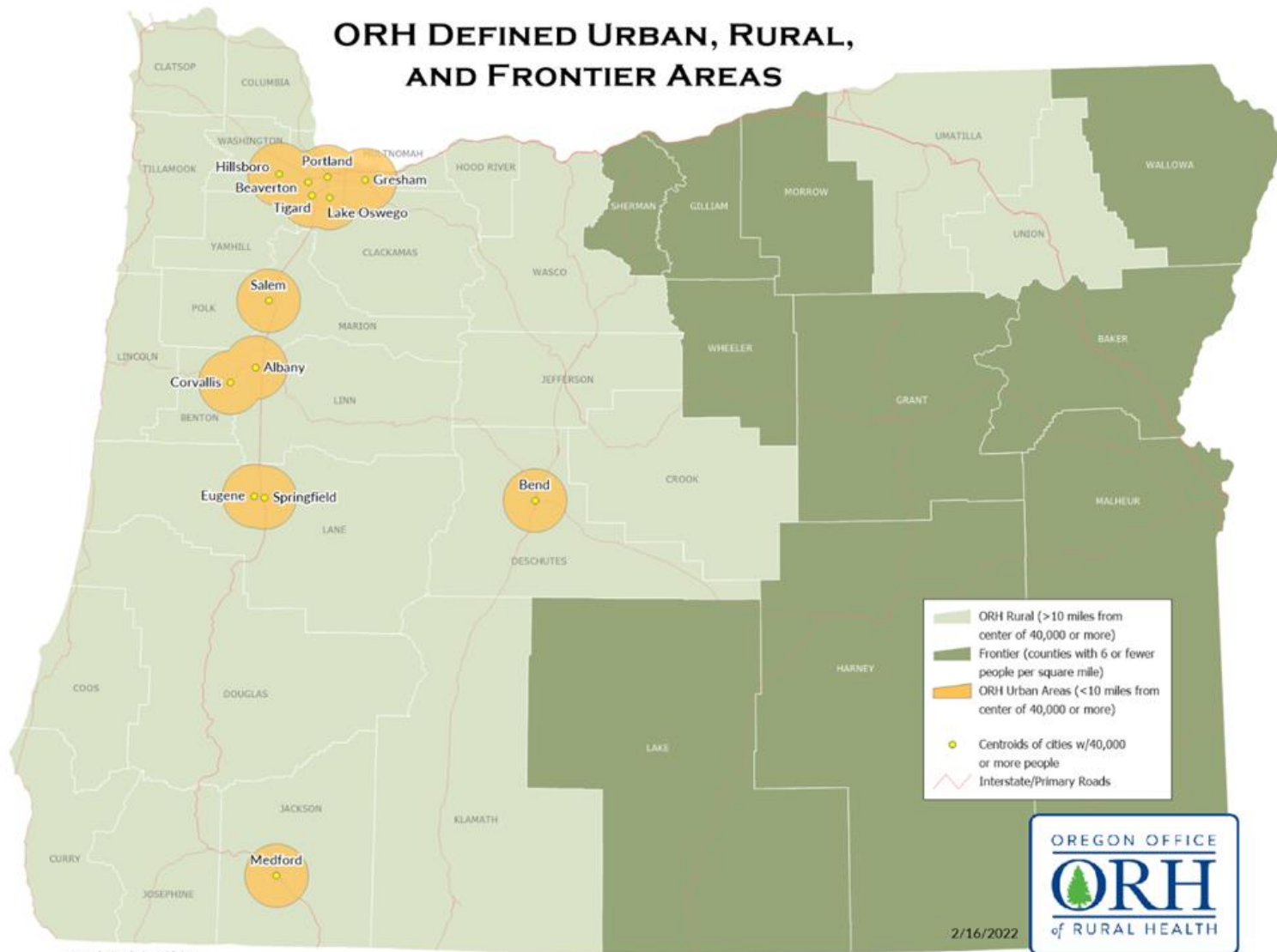
**Urban Area** = < 10 miles from center of 40,000 or more

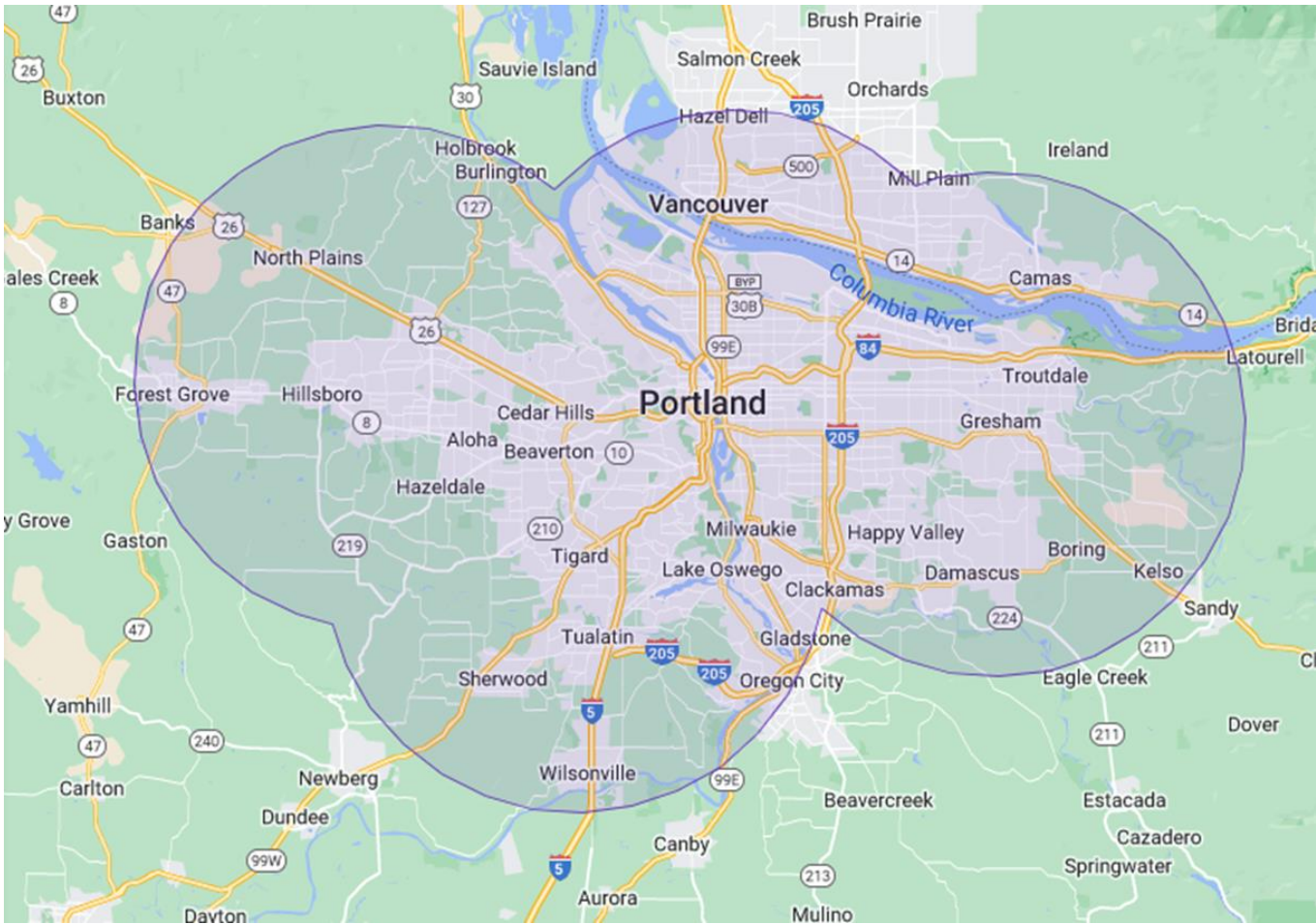
**Large Urban Area** = Connected Urban Areas, as defined above, with a combined population size greater than or equal to 1,000,000 persons with a population density greater than or equal to 1,000 persons per square mile.

**Rural Area** = > 10 miles from center of 40,000 or more

**Frontier Area** = Counties with 10 or fewer people per square mile

# ORH DEFINED URBAN, RURAL, AND FRONTIER AREAS





# Urban Density & Designations

Incorporated City/Town	County	Certified Estimate July 1, 2021	City Land Square Miles	Pop Density, People per sq mile	Comparable MA County Designation	MA County Designation
Beaverton	Washington	97,782	19.6	4988.88	Metro (2)(iv)	Metro
Portland	Multnomah	658,773	133.45	4936.48	Large Metro (1)(ii)	Large Metro
Gresham	Multnomah	114,361	23.47	4872.65	Metro (2)(iv)	Large Metro
Tigard	Washington	55,854	12.67	4408.37	Metro (2)(iv)	Metro
Hillsboro	Washington	108,154	25.67	4213.25	Metro (2)(iv)	Metro
Corvallis	Benton	57,601	14.27	4036.51	Metro (2)(iv)	Metro
Eugene	Lane	175,626	44.18	3975.24	Metro (2)(iv)	Metro
Springfield	Lane	62,352	15.825	3940.09	Metro (2)(iv)	Metro
Lake Oswego	Clackamas	40,801	10.78	3784.88	Metro (2)(v)	Metro
Salem	Marion	177,694	48.8	3641.27	Metro (2)(iv)	Metro
Medford	Jackson	87,353	25.89	3374.01	Metro (2)(iv)	Metro
Albany	Linn	57,199	17.66	3238.90	Metro (2)(iv)	Micro
Bend	Deschutes	100,922	33.62	3001.84	Metro (2)(iv)	Micro

	Total Certified Estimate	Total City Land Square Miles	Total Pop Density (people/sq mile)	Comparable MA County Designation	Notes
Portland Metro Centroid	1,232,968	290.145	4249.49	Large Metro (1)(i)	Average pulls entire area into Large Metro designation.
Linn/Benton Centroid	153,636	32.27	4760.95	Metro (2)(iv)	Stays Metro designation - meeting the same criteria.
Lane Centroid	165,353	43.33	3816.13	Metro (2)(iii)	Stays Metro designation - meets using a different criteria.
					Bend, Medford, and Salem all remain as Metro.

## Provider & Facility Types to be Tied to Time and Distance Standards

Primary Care	Dermatology	Cardiology	Ophthalmology
Primary Oral Care	Endocrinology	Optometry	Rheumatology
Mental Health Provider	Endodontics	Oral & Maxillofacial Surgery	Urology
SUD Treatment Provider	ENT/Otolaryngology	Orthodontics	Traditional Health Worker
Obstetrics	Gastroenterology	Ophthalmology	Dialysis
Gynecology	General Surgery	Periodontics	Imaging
Pharmacy	Nephrology	Physical Therapy	Methadone Clinic
Hospital	Neurology	Podiatry	Skilled Nursing Facility
Hospital, Acute Psych.	Occupational Therapy	Psychiatry	Speech Language Pathology
Allergy & Immunology	Oncology Medical/Surgical	Psychology	Urgent Care
Audiology	Oncology Radiation Services	Pulmonology	



# Time and Distance – Example Standards

	Large Urban	Urban	Rural	Frontier
Primary Care	10 mins or 5 miles	25 mins or 15 miles	30 mins or 20 miles	40 mins or 30 miles
Primary Oral Care	10 mins or 5 miles	25 mins or 15 miles	30 mins or 20 miles	40 mins or 30 miles
Mental Health Provider	10 mins or 5 miles	25 mins or 15 miles	30 mins or 20 miles	40 mins or 30 miles
SUD Treatment Provider	15 mins or 15 miles	30 mins or 30 miles	45 mins or 45 miles	60 mins or 60 miles
Obstetrics	30 mins or 15 miles	45 mins or 30 miles	60 mins or 45 miles	75 mins or 60 miles
Gynecology	30 mins or 15 miles	45 mins or 30 miles	60 mins or 45 miles	75 mins or 60 miles
Pharmacy	10 mins or 5 miles	25 mins or 15 miles	30 mins or 20 miles	40 mins or 30 miles
Hospital	15 mins or 15 miles	30 mins or 30 miles	45 mins or 45 miles	60 mins or 60 miles
Hospital, Acute Psych.	20 mins or 10 miles	45 mins or 30 miles	75 mins or 60 miles	110 mins or 100 miles
Allergy & Immunology	30 mins or 15 miles	45 mins or 30 miles	90 mins or 75 miles	125 mins or 110 miles

	Large Urban	Urban	Rural	Frontier
Audiology	15 mins or 15 miles	30 mins or 30 miles	45 mins or 45 miles	60 mins or 60 miles
Cardiology	20 mins or 10 miles	30 mins or 20 miles	75 mins or 60 miles	95 mins or 85 miles
Dermatology	20 mins or 10 miles	30 mins or 45 miles	75 mins or 60 miles	110 mins or 100 miles
Endocrinology	30 mins or 15 miles	60 mins or 40 miles	110 mins or 90 miles	145 mins or 130 miles
Endodontics	20 mins or 10 miles	45 mins or 30 miles	75 mins or 60 miles	110 mins or 100 miles
ENT/Otolaryngology	30 mins or 15 miles	45 mins or 30 miles	90 mins or 75 miles	125 mins or 110 miles
Gastroenterology	20 mins or 10 miles	45 mins or 30 miles	60 mins or 45 miles*	140 mins or 125 miles
General Surgery	20 mins or 10 miles	40 mins or 25 miles	75 mins or 60 miles	95 mins or 85 miles
Nephrology	30 mins or 15 miles	45 mins or 30 miles	90 mins or 75 miles	130 mins or 115 miles
Neurology	20 mins or 10 miles	45 mins or 30 miles	80 mins or 65 miles	110 mins or 100 miles
Occupational Therapy	20 mins or 10 miles	45 mins or 30 miles	75 mins or 60 miles	110 mins or 100 miles

	Large Urban	Urban	Rural	Frontier
Oncology Medical/Surgical	20 mins or 10 miles	45 mins or 30 miles	80 mins or 65 miles	110 mins or 100 miles
Oncology Radiation Services	30 mins or 15 miles	60 mins or 40 miles	110 mins or 90 miles	145 mins or 130 miles
Ophthalmology	20 mins or 10 miles	45 mins or 30 miles	75 mins or 60 miles	110 mins or 100 miles
Optometry	20 mins or 10 miles	45 mins or 30 miles	75 mins or 60 miles	110 mins or 100 miles
Oral & Maxillofacial Surgery	20 mins or 10 miles	45 mins or 30 miles	75 mins or 60 miles	110 mins or 100 miles
Orthodontics	20 mins or 10 miles	45 mins or 30 miles	75 mins or 60 miles	110 mins or 100 miles
Periodontics	20 mins or 10 miles	45 mins or 30 miles	75 mins or 60 miles	110 mins or 100 miles
Physical Therapy	20 mins or 10 miles	45 mins or 30 miles	75 mins or 60 miles	110 mins or 100 miles
Podiatry	15 mins or 15 miles	30 mins or 30 miles	45 mins or 45 miles	60 mins or 60 miles
Psychiatry	20 mins or 10 miles	45 mins or 30 miles	75 mins or 60 miles	110 mins or 100 miles
Psychology	20 mins or 10 miles	45 mins or 30 miles	75 mins or 60 miles	110 mins or 100 miles

	Large Urban	Urban	Rural	Frontier
Pulmonology	20 mins or 10 miles	45 mins or 30 miles	75 mins or 60 miles	110 mins or 100 miles
Rheumatology	30 mins or 15 miles	60 mins or 40 miles	120 mins or 100 miles	145 mins or 130 miles
Urology	20 mins or 10 miles	45 mins or 30 miles	75 mins or 60 miles	110 mins or 100 miles
Traditional Health Worker	20 mins or 10 miles	45 mins or 30 miles	75 mins or 60 miles	110 mins or 100 miles
Dialysis	15 mins or 15 miles	30 mins or 30 miles	45 mins or 45 miles	60 mins or 60 miles
Imaging	20 mins or 10 miles	45 mins or 30 miles	75 mins or 60 miles	110 mins or 100 miles
Methadone Clinic	20 mins or 10 miles	45 mins or 30 miles	75 mins or 60 miles	110 mins or 100 miles
Skilled Nursing Facility	20 mins or 10 miles	45 mins or 30 miles	75 mins or 60 miles	110 mins or 100 miles
Speech Language Pathology	15 mins or 15 miles	30 mins or 30 miles	45 mins or 45 miles	60 mins or 60 miles
Urgent Care	15 mins or 15 miles	30 mins or 30 miles	45 mins or 45 miles	60 mins or 60 miles

# Potential Timelines for Implementation

Timeline A: Full implementation effective July 1, 2023

Timeline B: Full implementation effective January 1, 2024

Timeline C: Hybrid implementation

- Effective July 1, 2023: update OAR to include specific call out of OB/GYN services and removal of certain facility types from time and distance standard requirements.
- Effective January 1, 2024: The rest of the proposed changes (updated geographic designations, provider types, and time and distance standards).



# Q & A