
OEGB 2020 Open Enrollment

Overview and Highlights for the 2020-21 Plan Year

Presented by:

Jackie Cowsill

OEGB Communications Coordinator



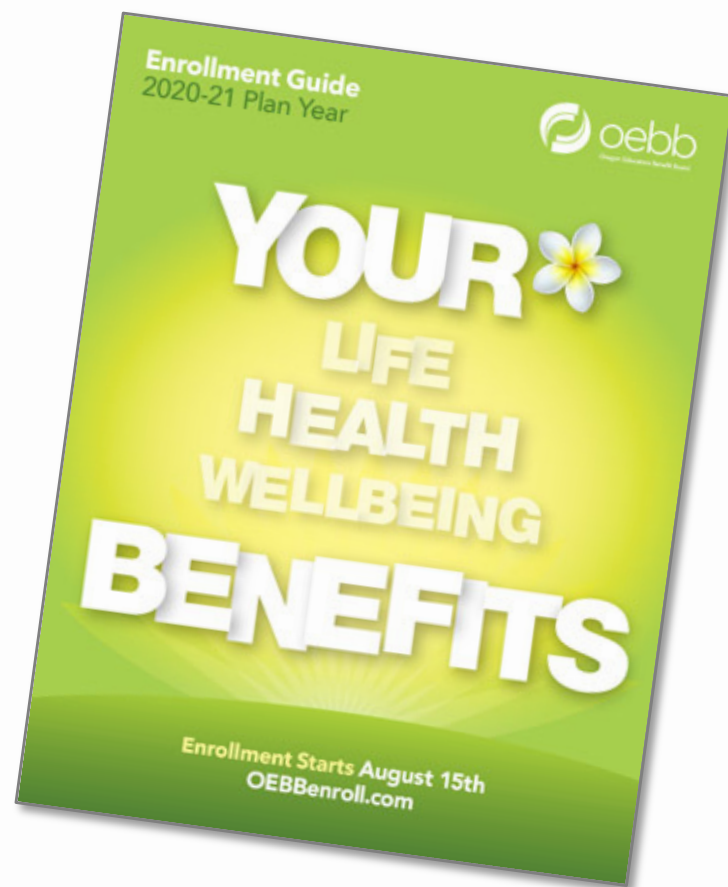
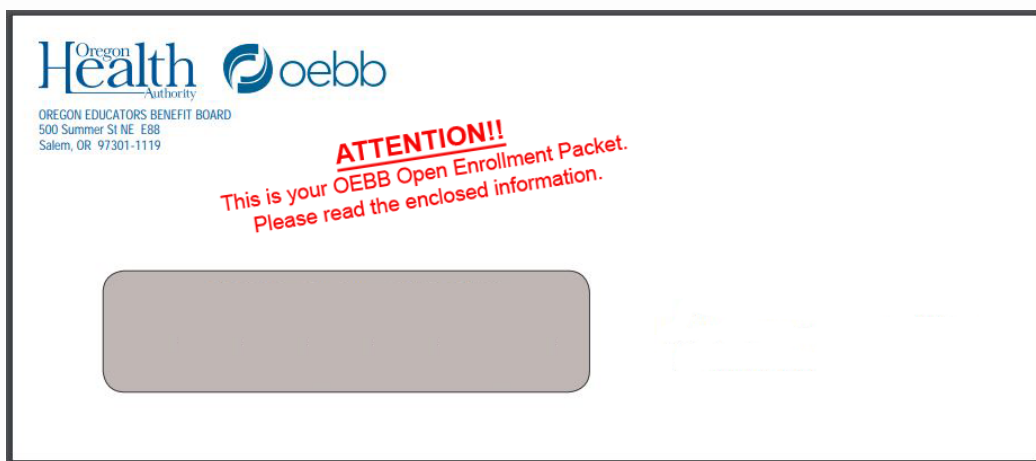


**THINGS
LOOK 
DIFFERENT
THIS YEAR**



Open Enrollment Packets (mailed Aug 3 - 6)

Smaller envelope – online booklet



Contains cover letter with your plan options and **links to online resources**,

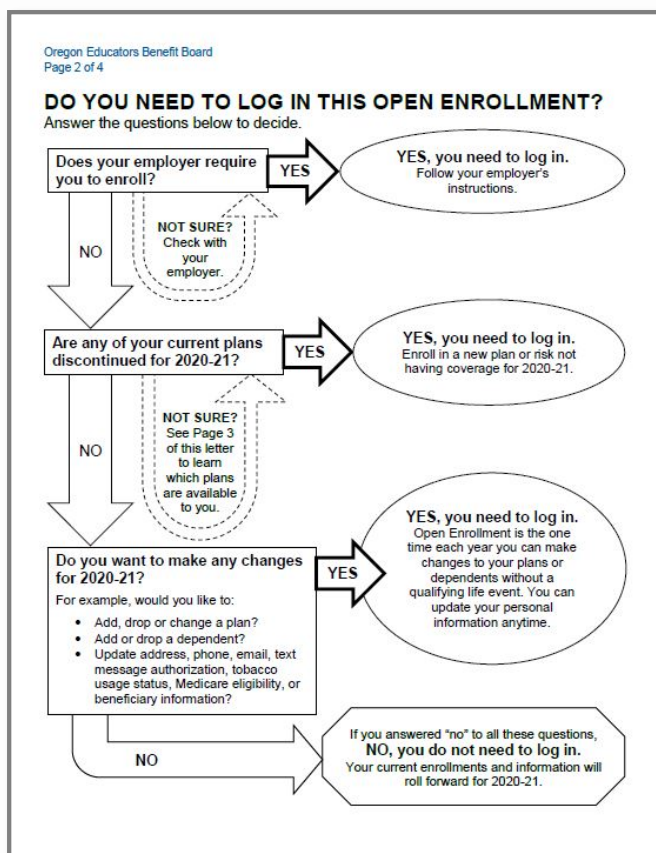
including the Enrollment Guide booklet (electronic only this year)



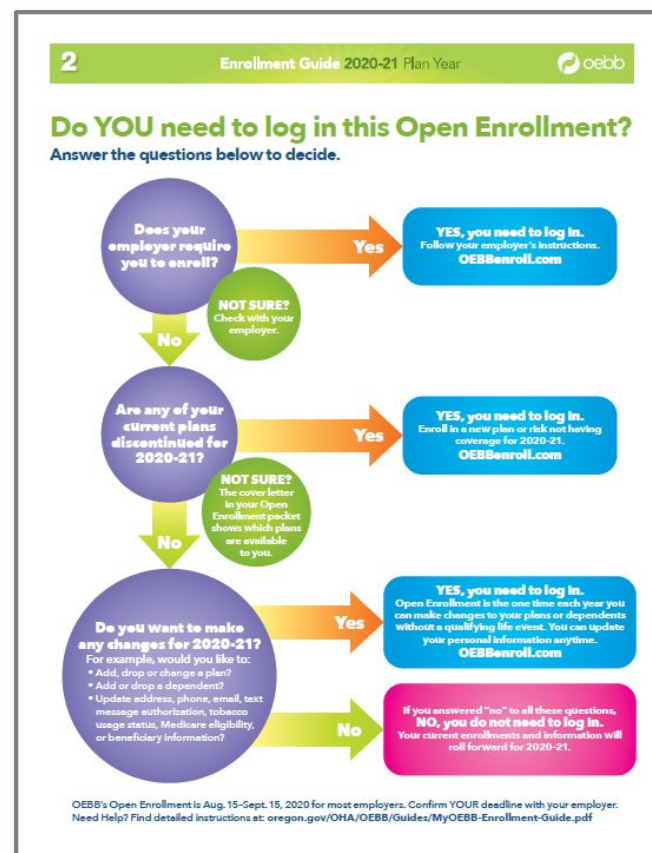
www.OEGBinfo.com



Do you need to log in?



Page 2 of cover letter



Page 2 of online booklet

Do you need to log in?

- Does your employer require you to enroll?
- Are any of your current plans discontinued for 2020-21?
- Do you want to make any changes for 2020-21?

For example, would you like to:

- Add, drop or change a plan?
- Add or drop a dependent?
- Update address, phone, email, text msg auth, tobacco usage, Medicare eligibility, or beneficiary information?

If you answer “YES” to any of the above, then YES, you need to log in.

If you answer “no” to all the above, then NO, you don’t need to log in. Your current enrollments will roll forward for 2020-21.



OEBBenroll.com

Log in anytime year-round to:

- View your current benefits statement
- Update personal information
- Update beneficiaries

Log in starting August 15 to:

- Make plan changes for 2020-21

Open Enrollment ends Sept 15 for most members

- Confirm your deadline with your employer



2020-21 Medical Plans

WHAT'S STAYING THE SAME:

- All medical plan names, deductibles and OOP maximums
- Moda's coordinated care benefit – enhanced benefits when you choose and use a PCP 360
- Current PCP 360 elections will carry forward

WHAT'S CHANGING:

- Kaiser Plan 3 – expanded preventive services before deductible
- All Moda plans:
 - New “Moda 360” health navigator service
 - Enhancements to Evicore pre-authorization



2020-21 Medical Plans

OEBB/PEBB Double Coverage Surcharge

- Starts October 1, 2020
- \$5 per month (even if double-covering more than one person)
- Only applies if you cover a family member on your OEBB **medical** plan who is also covered on their own OEBB or PEBB **medical** plan through their own employment.
- Only charged to active, full-time employees (no part-time employees, early retirees or COBRA)
- Mainly affects double-covered spouses/partners
- Children are not included unless they are also an OEBB or PEBB subscriber (if their job makes them eligible for OEBB/PEBB benefits)



2020-21 Medical Plans

Will the OEBB/PEBB double coverage surcharge apply to you?

- 1) Are you a full-time active employee covering a family member on your OEBB medical plan who is also eligible for their own medical insurance as an employee through OEBB or PEBB? **If yes, then ...**
- 2) Is that family member also a full-time active employee, and enrolled in their own OEBB or PEBB medical insurance offered by their employer? **If yes, then a \$5/month surcharge will be applied starting October 1, 2020.**

If you answered “no” to either of these questions, the surcharge does NOT apply to you.

Surcharge FAQs will be available at: [OEBBondemand.com](https://oebbondemand.com)



2020-21 Dental and Vision Plans

“Incentive Plans” - Delta Dental Plans 1 & 5

- Did you visit the dentist during the 2019-20 plan year?
Yes: Your incentive benefit level will increase for 2020-21 as expected.
No: Your incentive benefit level will remain the same for 2020-21.

All Delta Dental/Moda Health dental plans

- New Hypertension ID Program

What's NOT Changing

- All dental and vision plans offered through Kaiser Permanente, Willamette Dental Group and VSP will remain the same for the 2020-21 plan year.



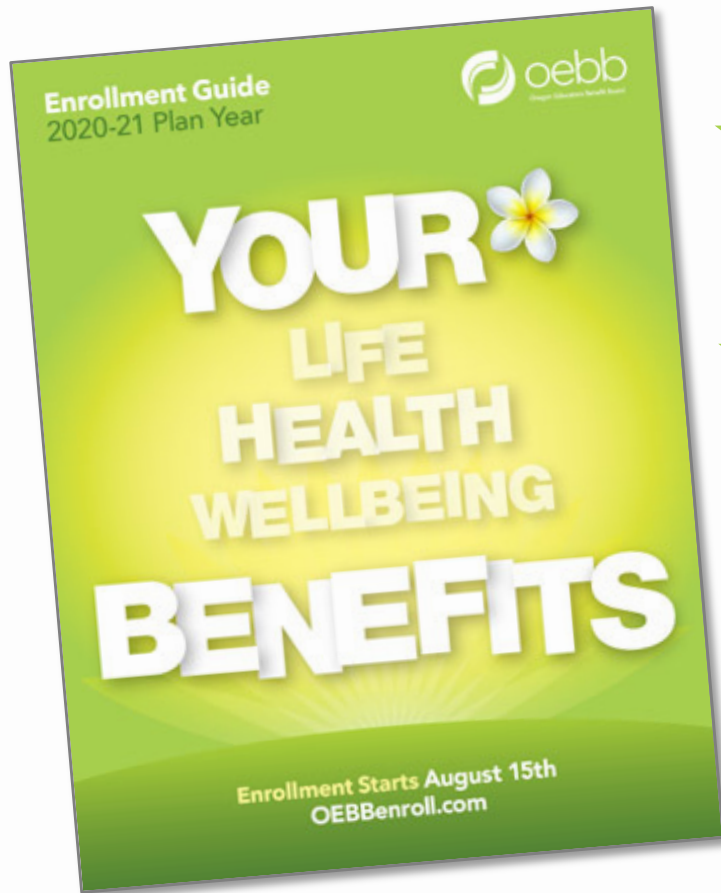
Lower price for short-term disability

The monthly cost for employee-paid short-term disability plans will **DECREASE** by 50% starting October 1, 2020.

View the rates at oebbplandocs.com.



Everything you need – online, anytime



OEBBdemand.com

Online booklet, plus videos, slides and handouts



OEBBplandocs.com

Online booklet, plus rates and side-by-side plan comparisons

OEBBenroll.com

MyOEGB online enrollment system

OEBBinfo.com

Home page of the OEGB website



Need help?

OEBB Member Services

888-4My-OEBB (888-469-6322)

oebb.benefits@state.or.us

Extended Hours during Open Enrollment

Monday – Friday 7 a.m.- 6 p.m.

Closed weekends and holidays

Thank you!

