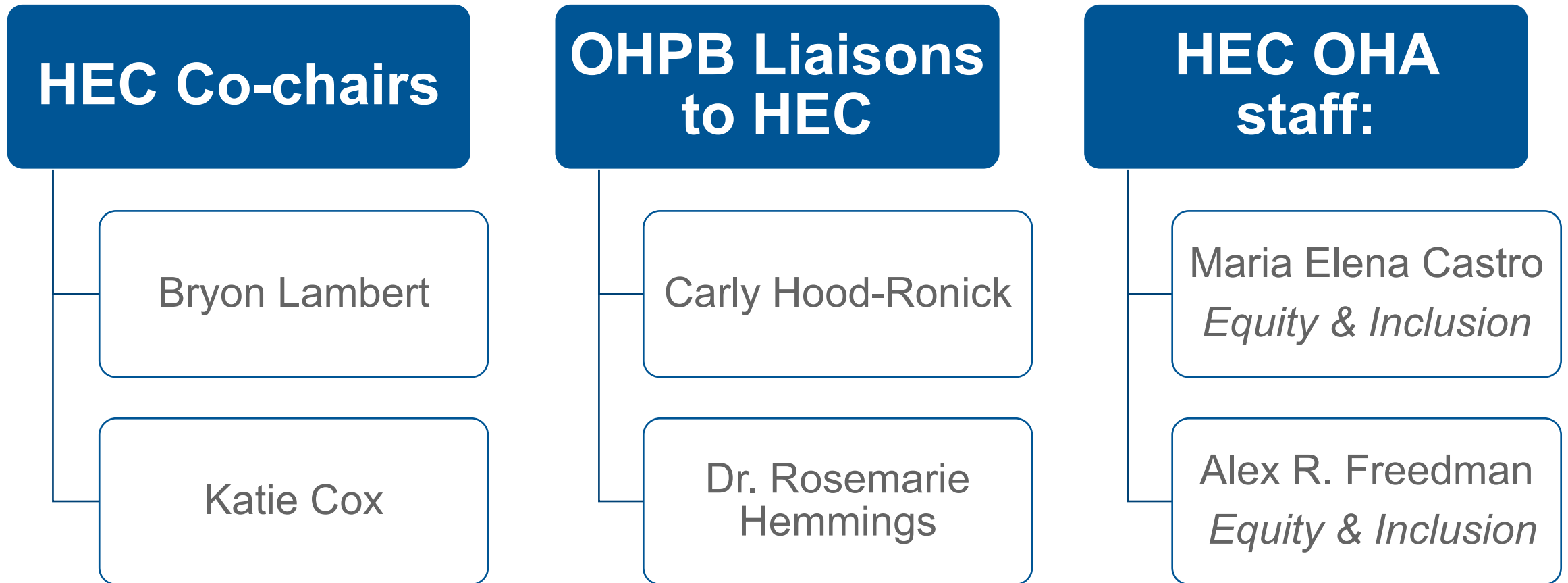


Health Equity Committee Recruitment

Proposed Spring 2024 Member Slate

Health Equity Committee Structure



HEC 2024 Recruitment Process

- Recruiting 5 positions (2 vacant slots + 3 departing members)
- **Intersectional Gaps Analysis** performed to identify **priority representation areas**
- Recruitment window April 5 – April 29
 - Applications solicited through community-based channels, including partners in the Community Partnership Outreach Program, Regional Health Equity Coalitions, and CCO / provider networks
- Scored using **Intersectional Scoring Rubric**
 - Incorporates lived experience / identity alignment with priority representation areas from IGA
 - Current HEC members and E&I staff participated as scorers

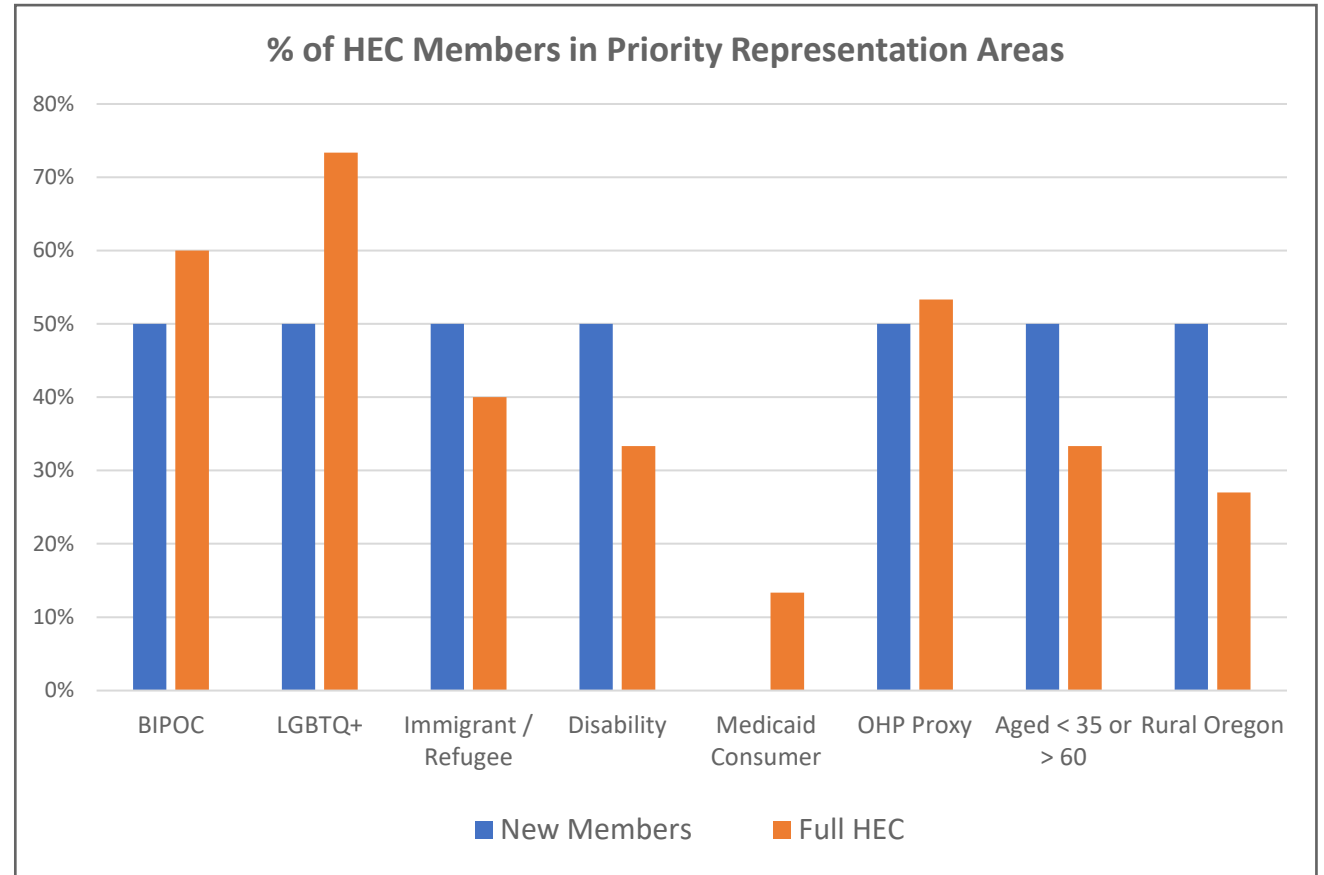
Health Equity Committee

Priority Representation Areas:

- ✓ Communities of color
- ✓ Immigrant and refugee communities
- ✓ People with disabilities community
- ✓ 2S-LGBTQIA+ community
- ✓ Experience as an OHP member / with OHA members
- ✓ Ages below 35 and over 60
- ✓ Rural Oregon

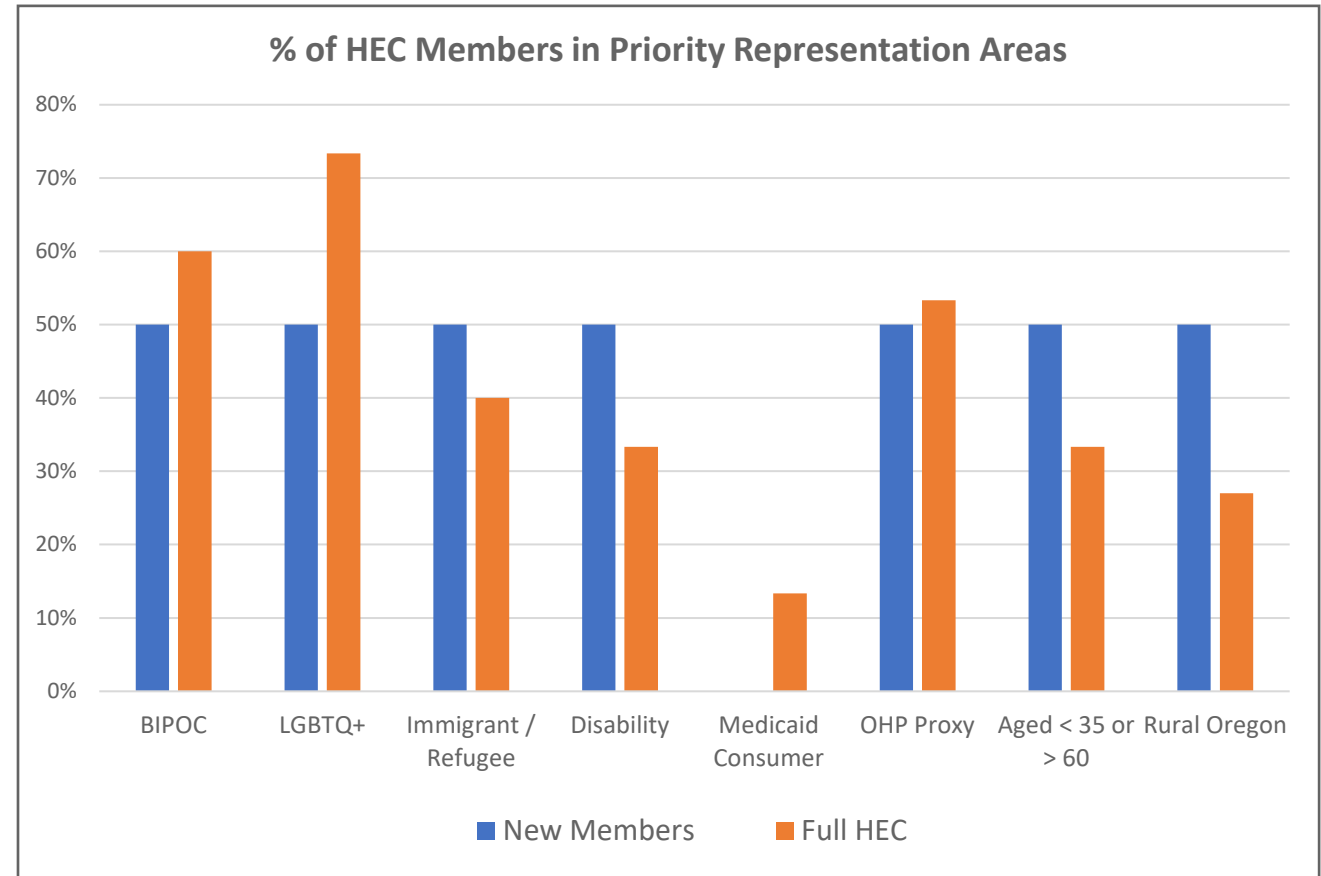
Highlights of Recruitment

- **Depth in representation** of priority identities
- **Expanding** areas of lived and professional expertise: SUD, health systems, immigrant / refugee communities
- **Experience with OHP and OHP members**
 - Two current OHP members
 - One spot reserved for add'l OHP member



Highlights of Recruitment

- Representation from all regional areas (added Central and Eastern OR)
- **Next recruitment window: Fall 2024**



HEC New Member Slate

| Name | Pronouns | Organizational Affiliation | Location by Area |
|------------------------------|----------|--|------------------|
| Juan Pablo Villalobos Garcia | He/They | LatinX Recovery Center | Portland Metro |
| Berryl Omollo | She/Her | Rockwood Community Development Corporation | Portland Metro |
| Jabin Kahl | They/He | Providence | Central Oregon |
| Andi Walsh | She/Her | Children's Institute | Eastern Oregon |

Q&A and Vote