

KAISER PERMANENTE NORTHWEST

OREGON PEBB AFFORDABILITY INITIATIVES

Presented by:

Wendy Watson
Chief Operating Officer (interim)

Dr. Keith Bachman
PEBB Medical Director

Sophary Sturdevant
Executive Account Manager

Attachment 6

March 19, 2019 Board Meeting

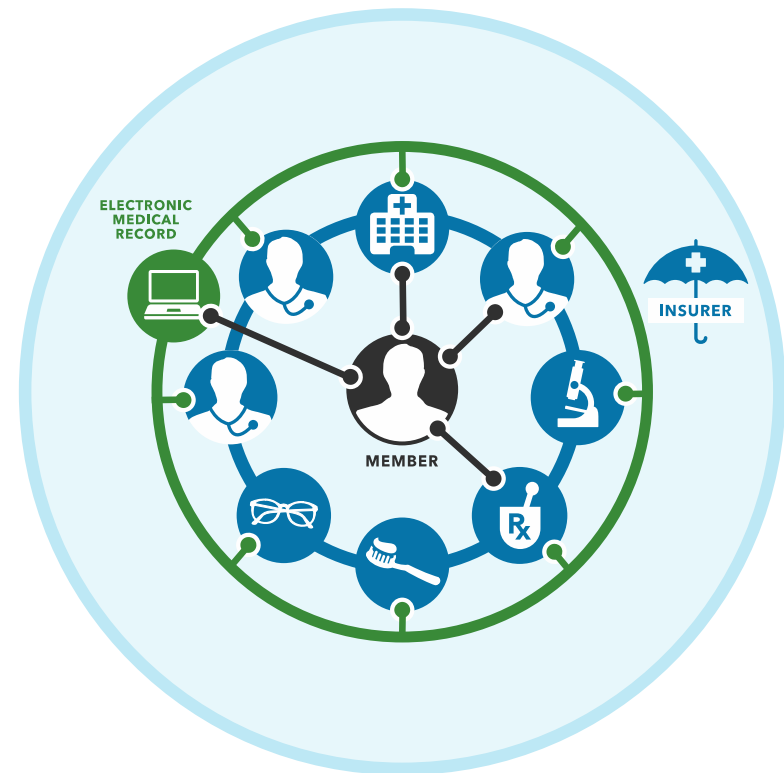
AGENDA

- Achieving Affordability
- Challenges to Affordability
- Improving Community Conditions

QUALITY, SERVICE, AFFORDABILITY

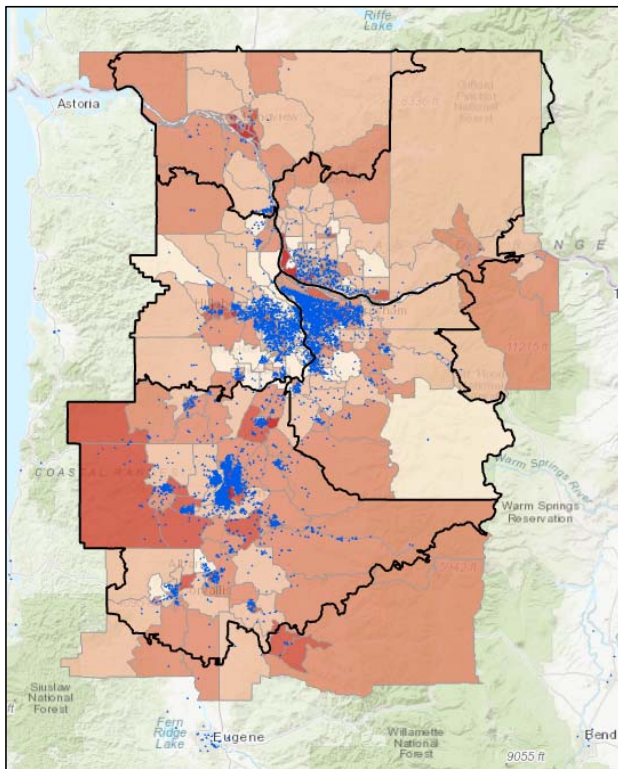
Our integrated model allows us to transform and innovate while maximizing efficiency.

- Population Health
- Pharmacy



EVOLVING POPULATION HEALTH

PEBB LANDSCAPE: SOCIAL DETERMINANTS OF HEALTH

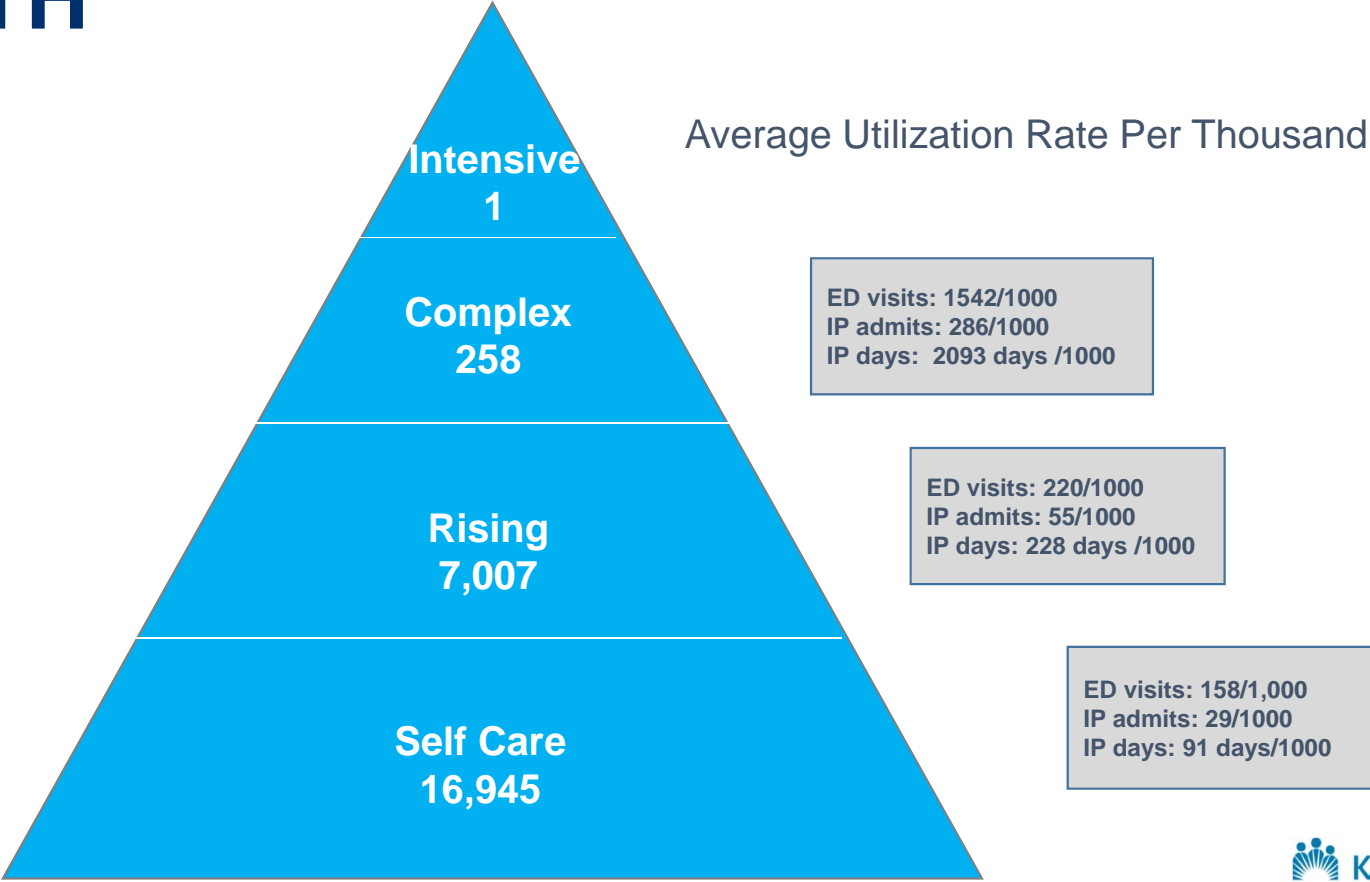


Region	# of PEBB Members	% of PEBB Members in High-Needs Communities	% of PEBB Members in Low-Needs Communities
Longview-Kelso	185	0.5%	67.6%
Clark	802	3.9%	83.0%
West Metro	3,958	1.6%	85.6%
East + Central Metro	5,370	6.6%	70.6%
Mid-Valley	12,911	16.9%	64.3%
Grand Total	23,226	11.3%	70.1%

POPULATION HEALTH

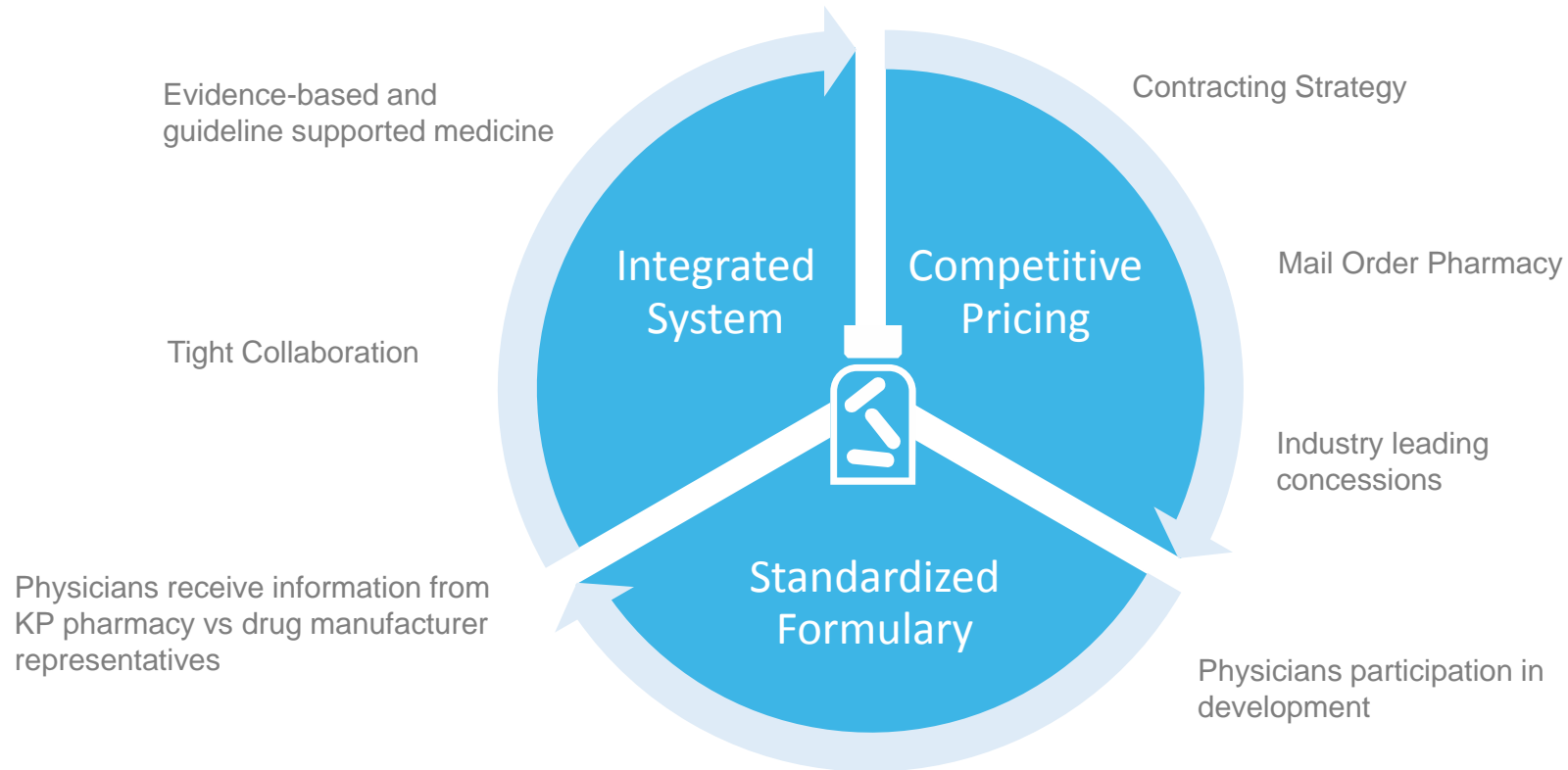


PEBB LANDSCAPE: POPULATION HEALTH

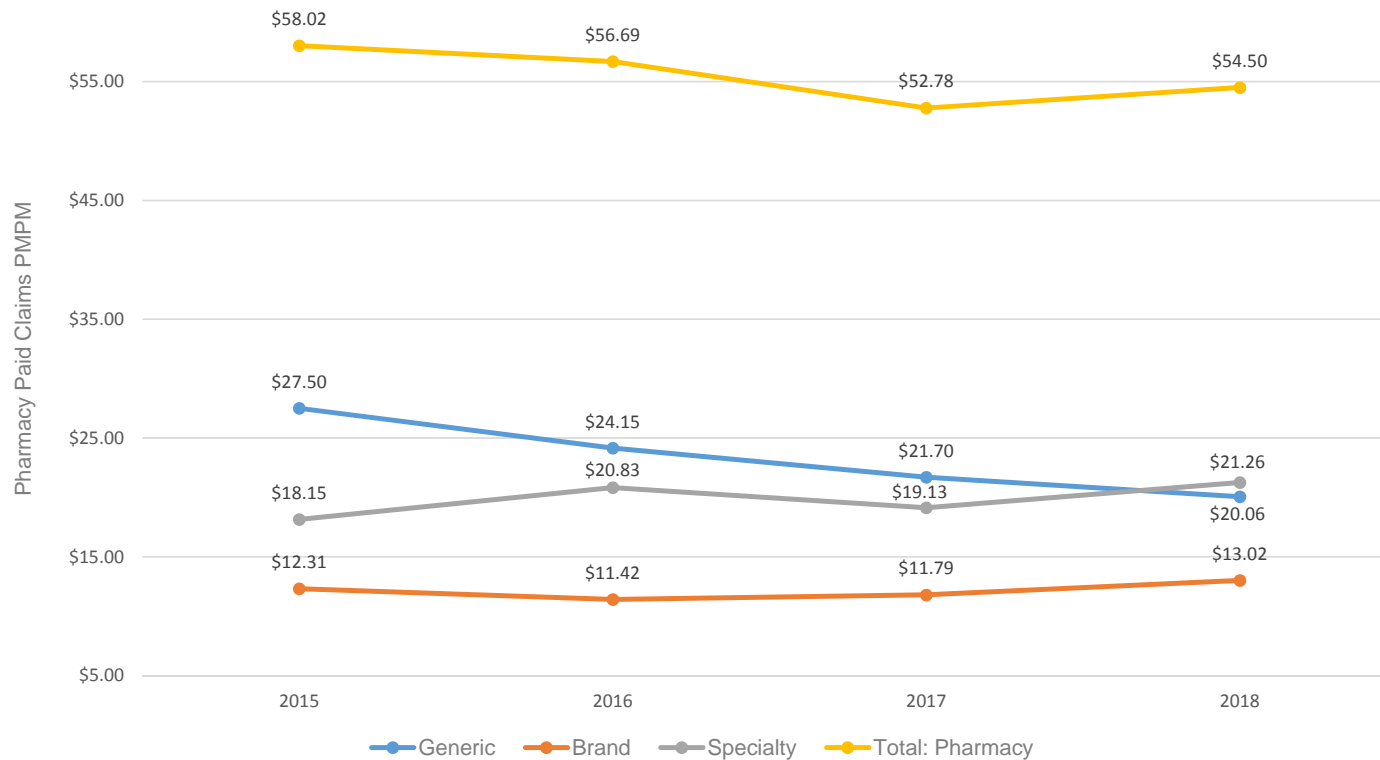


PHARMACY MANAGEMENT

PHARMACY MANAGEMENT



PEBB LANDSCAPE: PHARMACY MANAGEMENT



CHALLENGES TO AFFORDABILITY

- New technology
- Increasing medication costs
- Cost of preventive services
- State and Federal mandates

COMMUNITY IMPACT



SUPPORT FROM PEBB

- Company culture, policies, and work environment
- Continue to support and promote employee health engagement
- Reframe health as a business strategy

THANK YOU!