
Community Engagement Cumulative Activity Report

The logo for the Oregon Health Authority is centered within a light blue, rounded rectangular background. The word "Oregon" is written in a smaller, orange, serif font above the "Health" portion of the logo. The word "Health" is written in a large, dark blue, serif font. Below "Health", the word "Authority" is written in a smaller, orange, serif font. A thin orange horizontal line is positioned at the bottom of the slide, below the logo area.

Oregon
Health
Authority

Community Engagement

- We have values and principles by which we do this work

OHA's Acknowledgement to Community

We acknowledge there are institutional, systemic and structural barriers that perpetuate inequity that have silenced the voices of communities over time.

OHA's Acknowledgement to Community

We are committed to partnerships, co-creation and co-ownership of solutions with communities disproportionately affected by health issues so that groups can actively participate in planning, implementing and evaluating efforts to address the COVID-19 response and other health issues.

OHA's Acknowledgement to Community

We recognize community-engaged health improvement is a long-term and dynamic process.

We are striving to engage with communities through deliberate, structured, emerging and best practice processes.

OHA's Acknowledgement to Community

We are striving to make engagement with public health effective for communities, especially those communities that experience institutional, systemic and structural barriers.

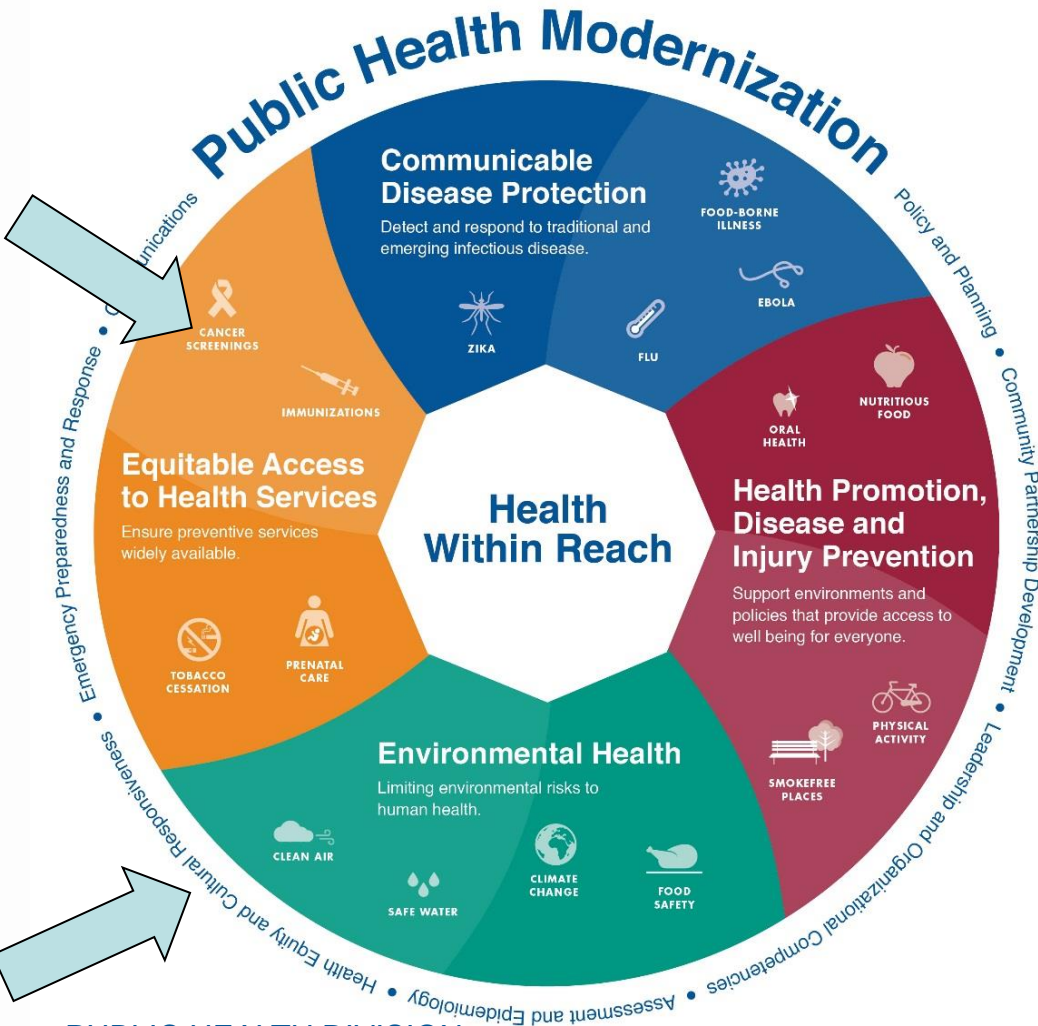
Agenda

1. Why are we collecting data?
2. Outline of the survey
3. Survey walkthrough
4. Summary and next steps
5. Questions

1| Collecting data because

- Identify and respond to barriers that you and your communities face to demonstrate stewardship, share good work and change our program over time.
- Understand the community-specific needs you're responding to
- Share compelling, real stories about the challenges and barriers you and your community members have overcome

1| Our theory of change



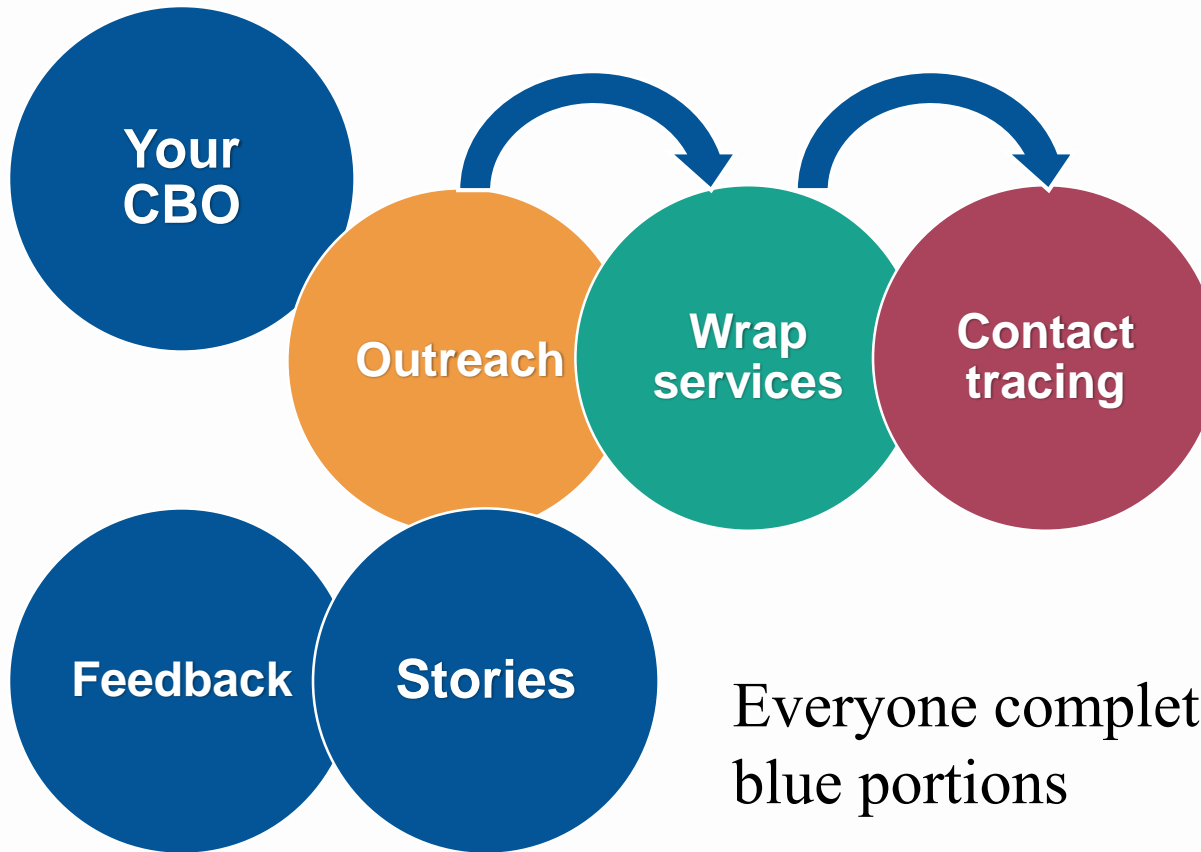
For Oregonians to be healthy, we need to invest in community

We want to work with community partners for all our programs

We need to change. Thank you for being part of that change

PUBLIC HEALTH DIVISION
Office of the State Public Health Director

2| Survey overview



Fill out only sections that your CBO did between June - December

Everyone completes blue portions

3| Survey walkthrough

Will focus on quantitative data collection

4| Summary and next steps

- Questions about numbers are substantially the same or changed to align with LPHA reporting
- Questions about your experience are mostly final but a few are still getting refined
- Your contact who's our authorized signer will receive the Survey Monkey link.

- Will share back collective data

5| Questions?



PUBLIC HEALTH DIVISION
Office of the State Public Health Director

For More Info

- Email: Kusuma.Madamala@dhsoha.state.or.us,
victoria.m.demchak@dhsoha.state.or.us