



Healthier Together Oregon

HTO in Action: Healthy Communities
May 6th, 2021, 10:00 – 11:30 am

Health
Oregon
Authority

Closed Captioning is available

English: <https://www.captionedtext.com/client/event.aspx?CustomerID=2697&EventID=4775292>

Spanish: <https://www.captionedtext.com/client/event.aspx?CustomerID=2697&EventID=4775307>

Tribal lands acknowledgment

We acknowledge that what we now call Oregon is the ancestral lands of many Tribes, those now federally recognized and not.

We are here because this land was occupied, and its traditional people were displaced by colonists and settlers. As settlers and/or guests, we recognize the strong and diverse Native communities in our region today, from Tribes both local and distant, and offer respect and gratitude for their stewardship of these lands throughout the generations.

Learn about Oregon's tribes here: <https://native-land.ca/>

Welcome and Acknowledgements

- OHA acknowledges there are institutional, systemic and structural barriers that perpetuate inequity and have silenced the voices of communities over time.
- OHA is committed to partnerships, co-creation and co-ownership of solutions with communities disproportionately affected by health issues so they can actively participate in planning, implementing and evaluating efforts to address health issues.
- OHA recognizes community-engaged health improvement is a long-term and dynamic process.
- OHA is striving to engage with communities through deliberate, structured, emerging and best practice processes.
- OHA is striving to make engagement with public health effective for communities, especially those communities that experience institutional, systemic and structural barriers.

PUBLIC HEALTH DIVISION

Office of the State Public Health Director

The logo for the Oregon Health Authority. It features the word "Oregon" in a smaller, orange font above the word "Health" in a large, dark blue font. Below "Health" is the word "Authority" in a smaller, orange font. The entire logo is positioned in the bottom right corner of the slide.

Purpose of “HTO in Action” events

- Advance health equity through increased coordination and alignment of health improvement planning and implementation
- Overview of HTO strategies and potential activities, by implementation area
- Showcase examples of work in progress
- Connect with others across the state doing similar work to identify next steps

Agenda

- Overview of implementation area
- HTO in action: Local examples
 - HOLLA Mentors
 - Department of Land Conservation and Development
 - United Way of the Columbia Willamette and OHA's Public Health Division.
- Moving forward together – Breakout rooms for relationship building and dialogue

Implementation Framework



Implementation Areas



Equity and
Justice



Healthy
Communities



Housing and
Food



Behavioral
Health



Healthy Families



Healthy Youth



Workforce
Development



Technology and
Health

Healthy Communities

- Built environment
- Community Resilience
- Economic wellness

Built Environment



Strategies and activities

Center BIPOC-AI/AN communities in decision making about land use planning and zoning in an effort to create safer, more accessible, affordable, and healthy neighborhoods.

Example activities

- *Create zoning laws that include transportation connectivity, access to affordable housing, education, healthy foods and health care, safety, and benefits BIPOC-AI/AN and low-income communities.*
- *Increase affordable housing stock through state appropriations and housing development programs in neighborhoods with active transportation choices, access to schools, jobs, transit, services, goods, and community amenities.*
- *Reduce density of tobacco and alcohol retail outlets in low income communities.*

Strategies and activities

Provide safe, accessible and high-quality **community gathering places**, such as parks and community buildings.

Example activities

- *Create joint-use agreements between governmental agencies to efficiently utilize existing facilities and amenities.*
- *Enable partners to share the cost of maintenance, upgrades and improvements.*
- *Focus on covered, outdoor spaces for COVID-19 recovery.*
- *Invest in planting trees, community gardens and other natural spaces in low income communities.*

Strategies and activities

Increase affordable access to **high speed internet** in rural Oregon.

Example activities

- *Increase dollars invested by public and private sectors for infrastructure development.*
- *Increase state and private investment for broadband infrastructure, especially to the end-user.*

Strategies and activities

Co-locate support services for low-income people and families at or near health clinics.

Example activities

- *Co-locate housing assistance and food banks.*
- *Consider access via tele-access and expansion of electronic documentation.*
- *Capitalize on repurposing of state buildings.*
- *Ensure services and clinics are accessible by active transportation*

Built Environment Resources

- Broadband internet – <https://www.linkoregon.org/>
- Friends of Trees - <https://friendsoftrees.org/>
- Trust for Public Land - <https://www.tpl.org/>
- Change Lab Solutions - <https://www.changelabsolutions.org/healthy-neighborhoods/planning-collection>
- Safe routes to school - <https://www.oregonsaferoutes.org/>

Please add links to your favorite built environment resources in the chat!

Community Resilience



Strategies and activities

Expand culturally and linguistically responsive **community-based mentoring and peer delivered services.**

Example activities

- *Expand intergenerational mentoring programs.*
- *Connect youth to caring adults and activities through school-based mentoring and after school programs.*
- *Provide sustainable funding for peer-to-peer services (e.g. new moms, immigrant/refugee communities, and peer youth specialists.)*

Strategies and activities

Develop community awareness of toxic stress, its impact on health and the importance of protective factors.

Example activities

- *Incorporate community involvement in the development and distribution of knowledge, tools, and resources.*
- *Focus on positive attributes such as strong social networks, community connections, cultural supports, and consciously built environments.*
- *Provide public service announcements, workshops and clinics to support and educate community members on how to prevent, cope, and resources to heal.*

Strategies and activities

Enhance community resilience through **promotion of art and cultural events** for priority populations.

Example activities

- *Respond to cultural, historic and social needs and changing demographics.*
- *Increase programs for LGBTQ+, older adults, and other historically isolated groups.*
- *Support use of sweat lodges, pipe ceremonies, & storytelling for AI/AN cultures.*
- *Provide opportunities for storytelling, drama, music and art.*
- *Provide culturally/linguistically responsive outreach about these events.*

Strategies and activities

Build **climate resilience** among priority populations.

Example activities

- *Implement community adaptation projects that build climate resilience.*
- *Collect data quantifying the burden of water insecurity and impacts to communities in order to support water insecurity prevention policy development*
- *Finalize and utilize the Oregon Climate Change Adaptation Framework*

Strategies and activities

Expand programs that **address loneliness and increase social connection** in older adults.

Example activities

- *Connect CHIPs to AAA plans on aging*
- *Provide funding for and expand social support programs for LGBTQ+ elders, like SAGE Metro Portland.*
- *Address transportation barriers, especially in rural areas.*
- *Look to lessons from Aging 2.0 report: A Snapshot of Global Innovation in Aging and Senior Care.*
- *Expand Senior Loneliness Line*

Community Resilience Resources

- Trauma Informed Oregon – traumainformedoregon.org
- Senior Loneliness Line - <http://seniorlonelinessline.org>
- Oregon Older Adult Behavioral Health Initiative - <https://oregonbhi.org/>
- Climate Change Adaptation Framework and BluePrint - <https://www.oregon.gov/lcd/CL/Pages/Adaptation-Framework.aspx>
- Color Outside the Lines - <https://coloroutsidelines.org/>
- Oregon Cultural Trust - <https://culturaltrust.org/>
- Foster club - <https://www.fosterclub.com/>
- Mentors for Black and Brown youth - <https://www.hollamentors.org>

Please add links to your favorite community resilience resources in the chat!

PUBLIC HEALTH DIVISION

Office of the State Public Health Director

Economic wellness



Strategies and activities

Invest in **workforce development and higher education opportunities** for priority populations.

Example activities

- *Support easily accessible job training and continuing education opportunities for prioritized populations.*
- *Increase financial supports for students to address both the cost of living and cost of higher education.*
- *Increase access to accredited trade programs through affordable online platforms.*
- *Expand access to more flexible work opportunities such as telecommuting and job sharing.*

.

Strategies and activities

Strengthen **economic development, employment and small business growth** in underserved communities.

Example activities

- *Increase access to capital in support of local small businesses, and entrepreneurship in rural communities.*
- *Develop cross-sector business groups to promote collaboration and shared learning on business development.*
- *Improve access to employment for people with disabilities through job carving/splitting.*
- *Develop incentives to encourage private investment in underserved communities coupled with First Source agreements to increase local availability of quality jobs.*

Strategies and activities

Enhance financial literacy and **access to financial services and supports** among priority populations.

Example activities

- *Increase SSI/SSDI enrollment assistance programs for people with disability*
- *Earned Income Tax Credit and free tax preparation services*
- *Individual Development Accounts*
- *Paid family leave.*
- *Increase educational programs and support for BIPOC-AI/AN communities who have been targeted by predatory payday lending practices.*
- *Increase financial literacy training in K-12 education.*

Economic Wellbeing Resources

- Financial Beginnings - <https://www.financialbeginnings.org/>
- Bank on Oregon - <http://bankonoregon.org/>
- Individual Development Accounts - <https://oregonidainitiative.org/>
- Assist: Assertive SSI Service Team - <https://programassist.org/>
- Tax preparation- <https://www.myfreetaxes.com/>
- Predatory lending - <http://stopthedebttrap.org/>
- Regional Solutions - <https://www.oregon.gov/gov/admin/regional-solutions/Pages/about.aspx>
- Multnomah County “College to County” program <https://multco.us/college-county>

Please add links to your favorite economic wellbeing resources in the chat!

PUBLIC HEALTH DIVISION

Office of the State Public Health Director

Oregon
Health
Authority

HTO in Action: Example 1

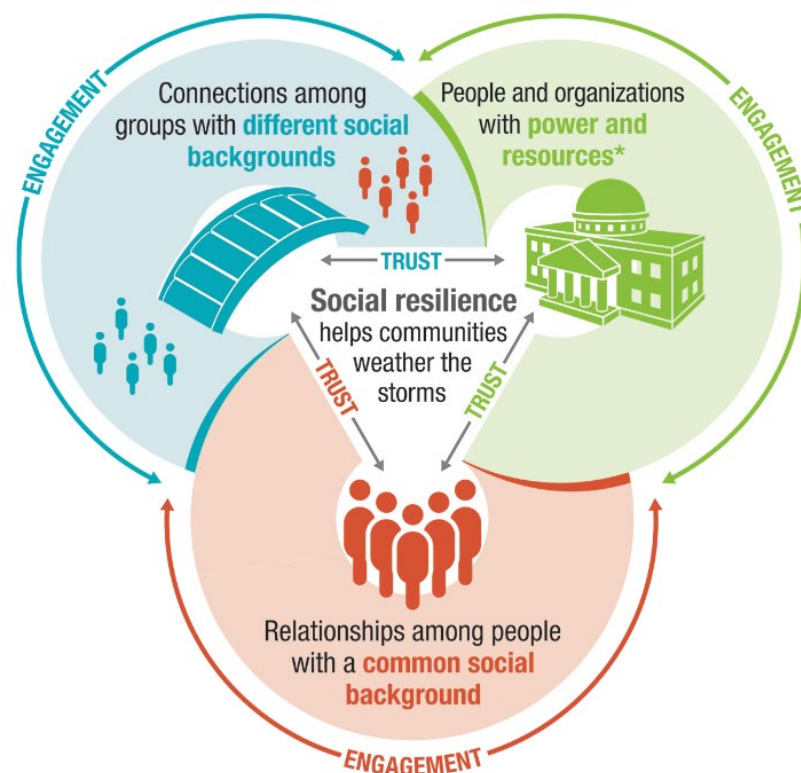
Build **climate resilience** among priority populations.

Alyssa McLean

*OHA-Public Health Division,
Environmental Public Health
Program*

Cristy Munoz

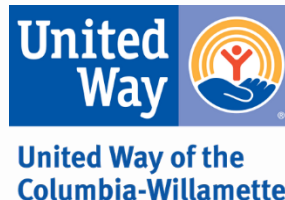
*United Way of the
Columbia Willamette Valley*



Disaster Resilience Learning Collaborative

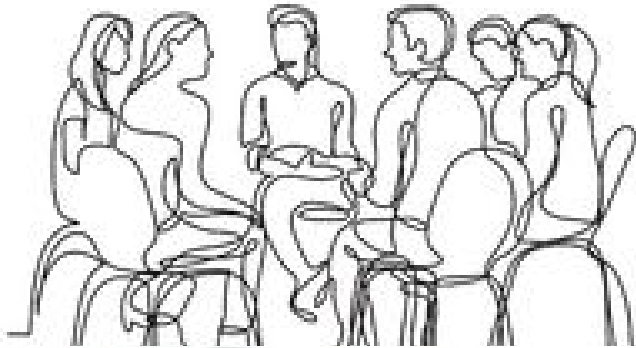
- **Alyssa McClean**, *OHA-Public Health Division, Environmental Public Health Section*
- **Cristy Muñoz**, *United Way of the Columbia Willamette*

A project to advance equitable disaster resilience through healing centered, culturally grounded collaborations and actions.



What are your
priorities
regarding
disaster
resilience in your
community?





HTO in Action: Example 2

Center BIPOC-AI/AN communities in decision making about land use planning and zoning in an effort to create safer, more accessible, affordable, and healthy neighborhoods.

Kirstin Greene, Deputy Director

Department of Land Conservation & Development



Climate Friendly and Equitable Communities

Virtual Public Workshop Spring 2021

Department of Land Conservation and Development |

April 9, 2021



DLCD

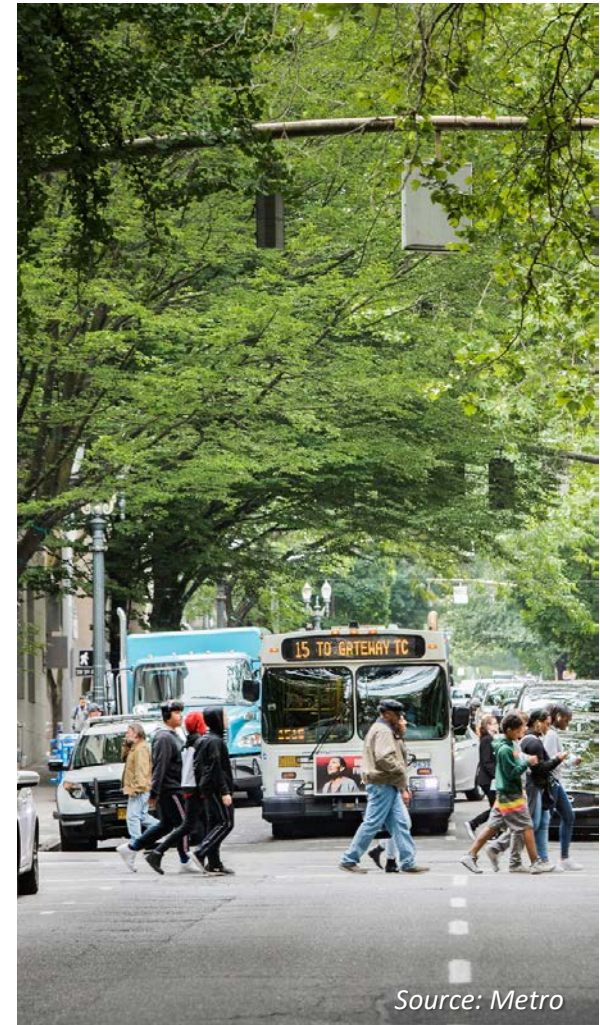


Healthier Together Oregon: Case Study on Health Equity and the Built Environment

Kirstin Greene, Deputy Director

Evan Manvel, Land Use and Transportation Planner

May 6, 2021

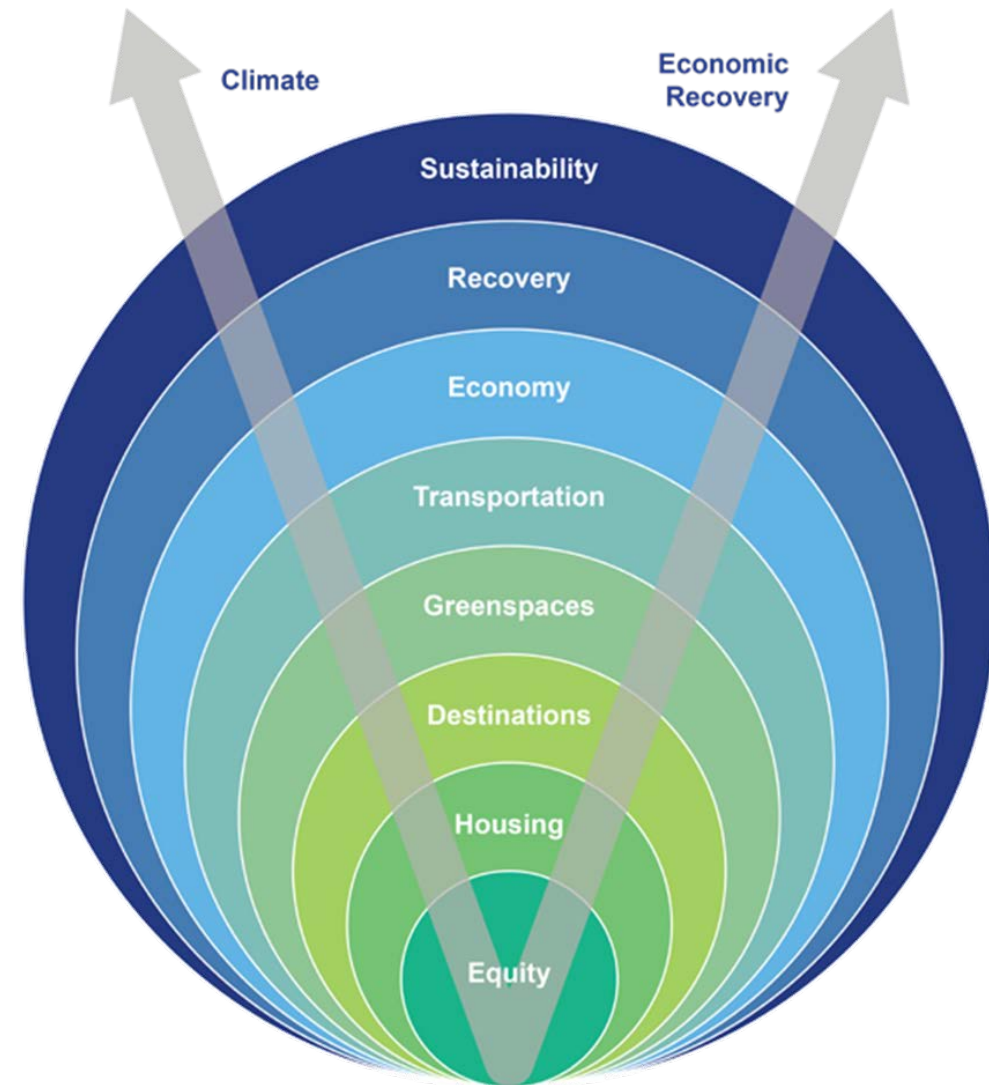


Source: Metro

Building an Equitable Future

As Governor Brown has committed to diversity, equity and inclusion, DLCD in its entirety is committed to identifying disparities based on race, ethnicity and disability; and addressing them through policy, program and technical assistance.

Everything in our work reflects that commitment.



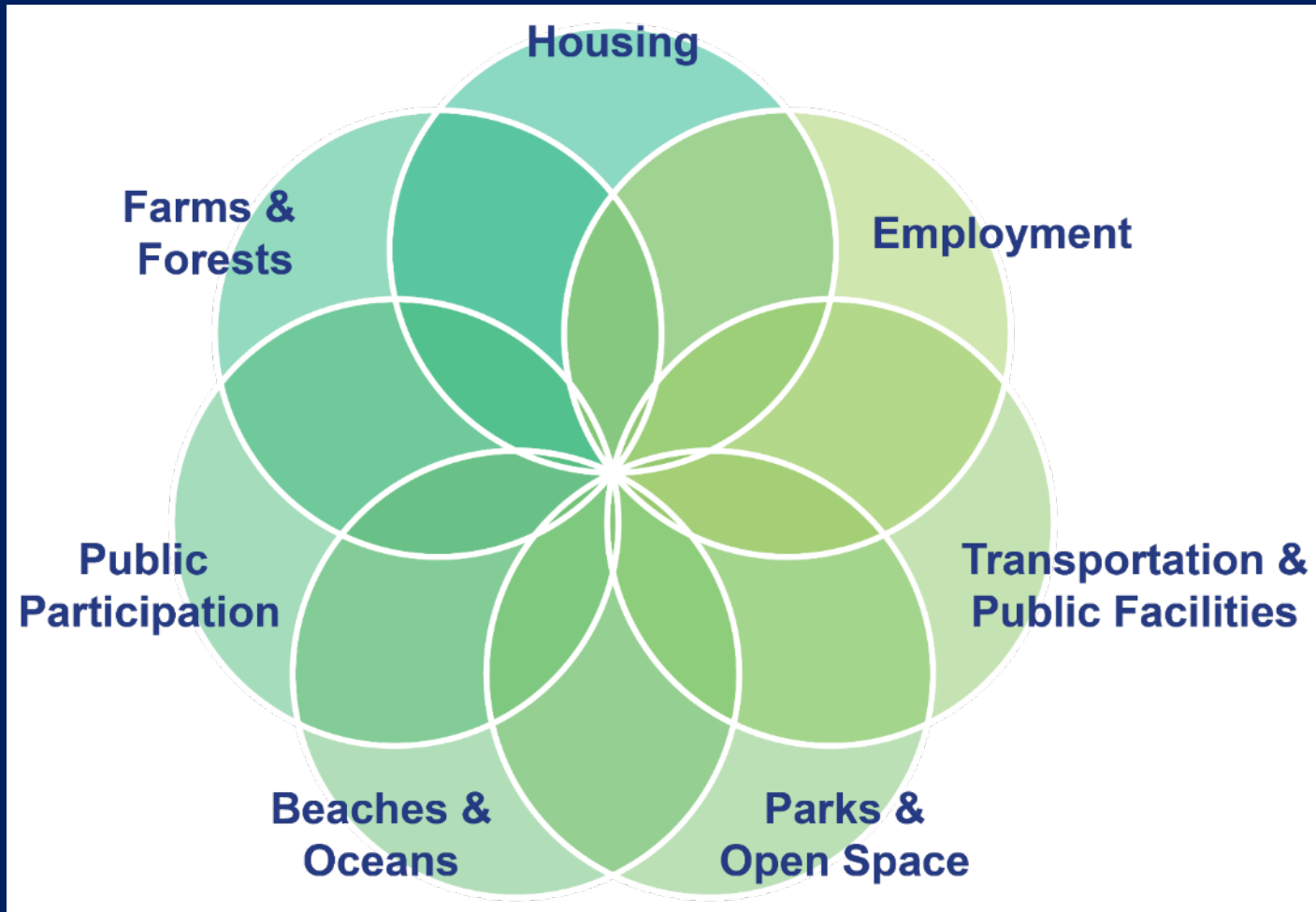
Agency Mission

To help communities plan for, protect and improve the built and natural systems that provide a high quality of life.

In partnership local governments, we foster sustainable and vibrant communities and protect our natural resources legacy.



Comprehensive Land Use Planning



Comprehensive land use planning is an inclusive approach addressing each community's future

Oregon's 19 Land Use Planning Goals

Process



Goals 1 & 2

Applies to all land use planning

Public Participation
Fact-Based Decisions
Evaluating Alternatives
Creating Implementation Measures

Resource



Goals 3, 4, 5, 6, 7, 8, 13, & 15

Applies to cities and counties

Farm and Forest Lands
Natural Hazards
Recreation
Natural Resources
Willamette River Greenway

Urban



Goals 9, 10, 11, 12, & 14

Applies to cities

Economic Development
Housing
Public Facilities
Transportation
Urban Growth Boundaries

Coastal



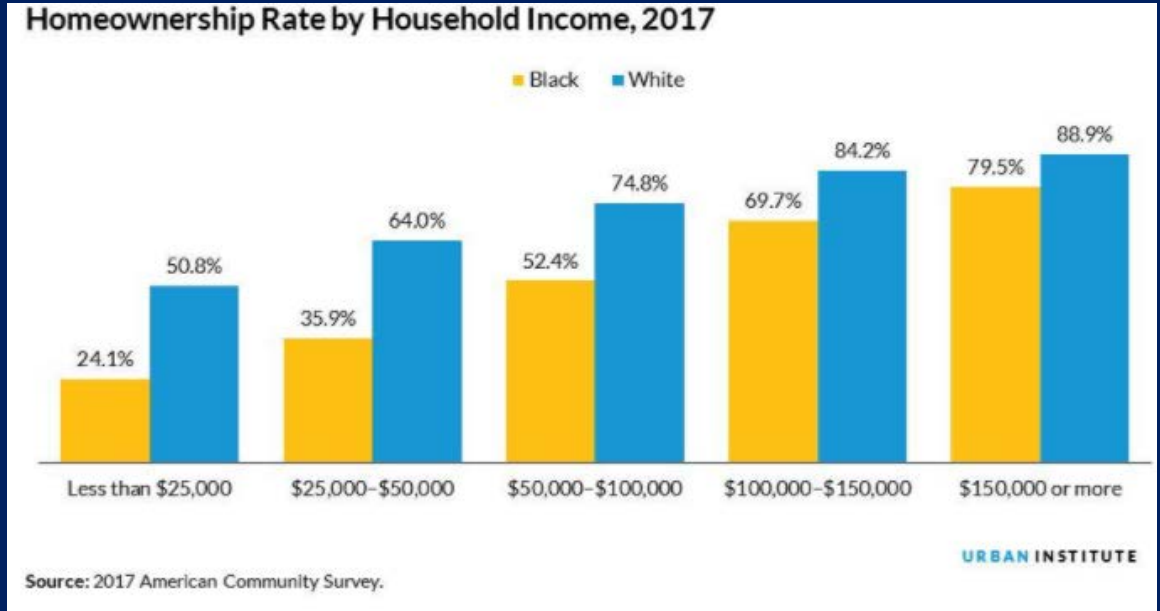
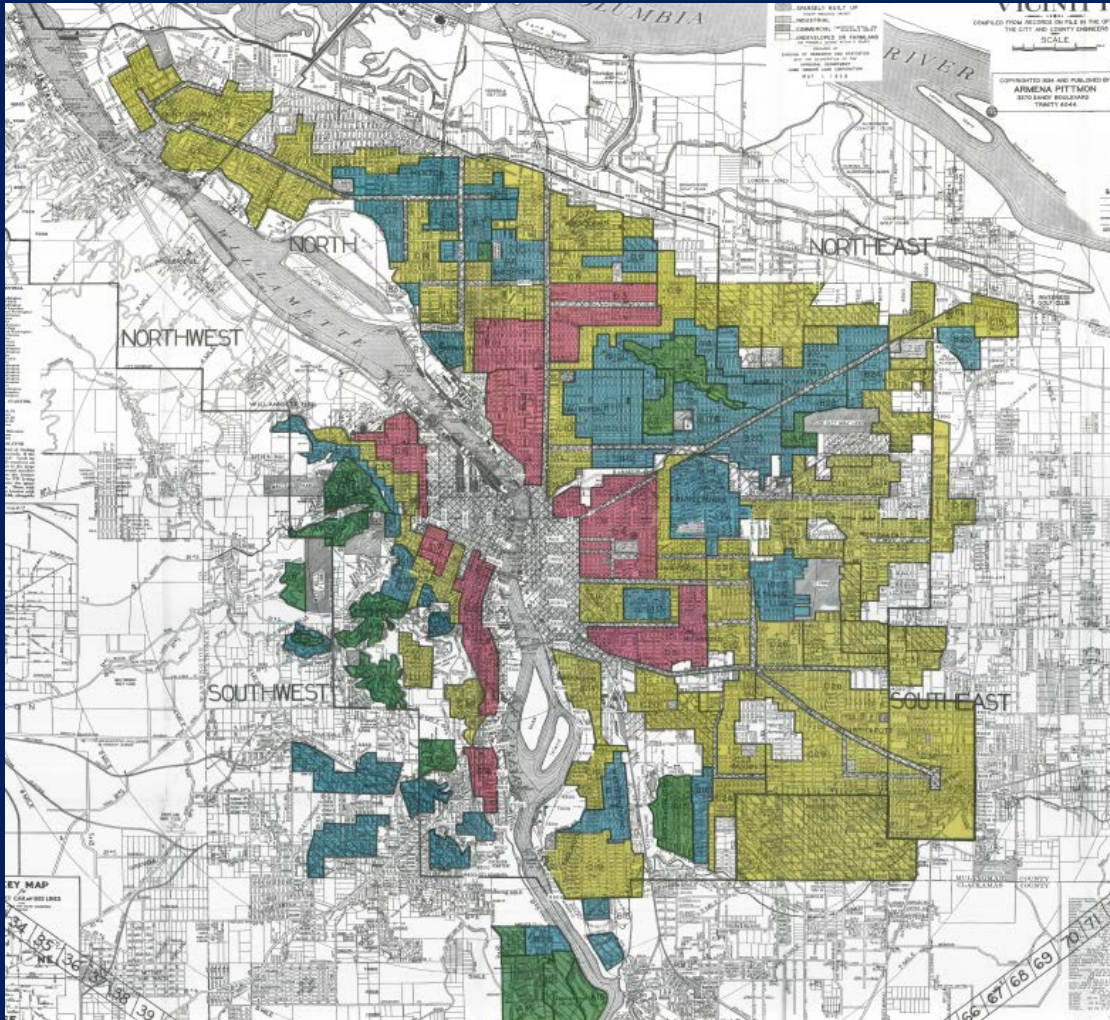
Goals 16, 17, 18, & 19

A networked partnership of federal & local gov'ts and tribes

Estuaries
Beaches and Dunes
Ocean Resources
Beach Access
Tsunami Resilience



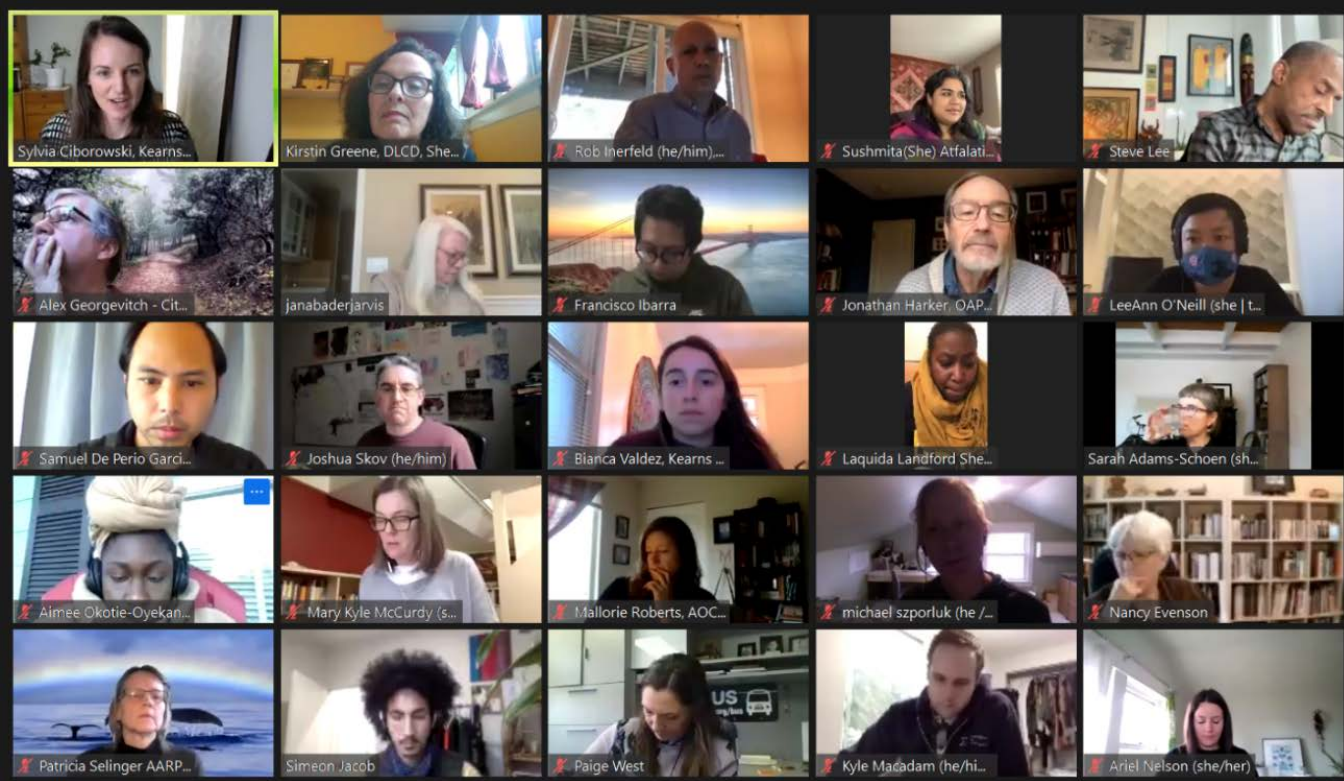
Inequity and Generational Wealth



71.9% of white households own homes
41.8% of Black households own homes

The 30.1% gap is wider than it was when race-based discrimination against homebuyers was legal.

(2017, Urban Institute)



Climate-Friendly and Equitable Communities

Process included definition of priority populations

Focused outreach

Financial support

40+ people advisory committee, including many community-based organizations

Worked to make demographics match the demographics of Oregon; fund participation

Equity-Driven Processes

(partial list)

Prioritize community-led engagement and decision-making, with **specific attention to communities most impacted by climate pollution**

Center the voices of people and organizations representing priority populations

Recognize where and how **intersectional discrimination** compounds disadvantages

Value **lived experience** and qualitative data...

Assess, document, acknowledge and address where **past policies** and effects of climate change have harmed and are likely to perpetuate harm to priority populations...

Climate-Friendly and Equitable Communities Rulemaking Equitable Outcomes Statement

Version 5

Context and Purpose

Governor Brown's [Executive Order 20-04](#) directed the Department of Land Conservation and Development and the Land Conservation and Development Commission to reduce greenhouse gas emissions and improve equitable outcomes for priority populations. This Climate-Friendly and Equitable Communities rulemaking initiative aims to do just that – provide rules and a program to reduce climate pollution and improve outcomes for Oregonians as a whole, with specific attention for specific priority populations. These populations are described in this document below.

To successfully develop these rules, staff and the Commission are relying heavily on the thoughtful, informed guidance from Rulemaking Advisory Committee (RAC) member organizations and members of these priority populations.

This statement has been developed to guide development of the rules, guidance documents, and technical assistance the Department provides as local governments implement them over time.

Future Vision

We are building a future where:

- All Oregonians live in safe, livable, and healthy neighborhoods
- All Oregonians have access to clean air and water, stable housing, healthy food, convenient and affordable transportation options, health care and living wages
- Systemic and institutional inequities based on race, income, age and disability no longer exist
- Priority populations no longer bear the largest burdens of pollution, environmental hazards, and environmental degradation
- Local decision-making ensures priority populations directly benefit from quality jobs and transportation choices
- Communities are held accountable for the achievement of racial equity and climate justice

Equity Outcomes

(partial list)

More accessible, safe, affordable and equitable transportation choices

Adequate, affordable, secure housing

Increased stability of priority populations



food – health equity – parks and nature – safety in public spaces

Community Conversations

Corvallis/Albany – April 6, 6:30 pm

Southern Oregon – April 13, 6:30 pm

Bend – May 11, noon

Eugene/Springfield – May 19, 6:30 pm

Salem/Keizer – May 25, 6:30

Green Infrastructure Webinar – May 6, 3:30 pm



Reminder to Put Ourselves in Other's Shoes

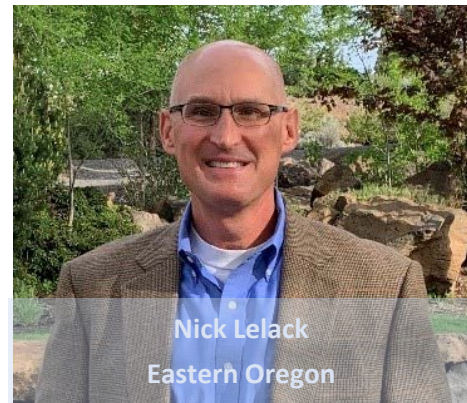
	At this meeting	Oregon
Household income under \$60,000	7%	50%
Have a disability	7%	25%
People of Color	4%	24%
Renters	22%	38%

Meeting skews older than Oregonians.

Public meetings are most accessible to those with extra time and resources, internet connections, and English as a first language.

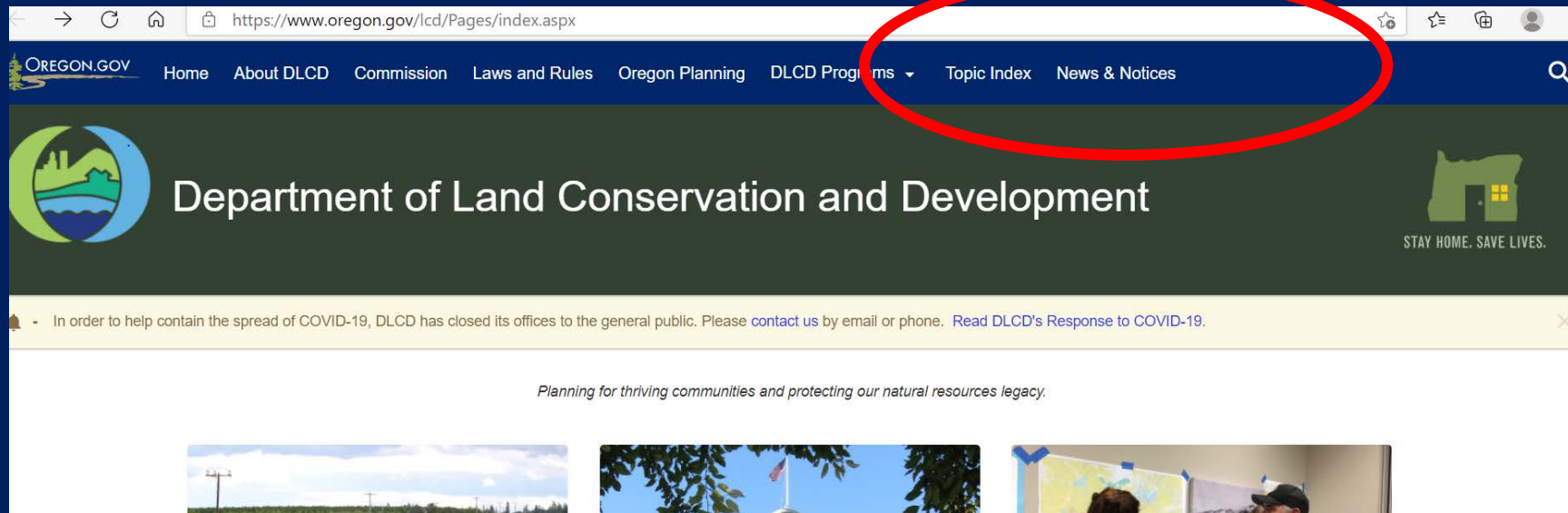
(% at meeting based on voluntary opt-in during registration)

Land Conservation and Development Commission



The LCDC meets six times a year and holds meetings around the state

Engage with DLCD!



Contact:

Evan Manvel, Land Use and Transportation Planner
Direct/Cell: 971-375-5979; evan.manvel@state.or.us

Kirstin Greene, Deputy Director
Direct/Cell: 971-701-1584; Kirstin.greene@state.or.us

HTO in Action: Example 3

Expand culturally and linguistically responsive **community-based mentoring and peer delivered services.**

Eric Knox and Vicky Schwoeffermann
HOLLA mentors

HOLLA

[The Story](#) [Programs](#) [HOLLA News](#) [Get Involved](#) [Shop](#)

[Donate Now](#)

**BLACK
LIVES**



Relationship building and dialogue

#1 Introductions and networking— name and pronouns, role or agency, and where in the state you are located

#2 Discuss strategies –Share examples of how your community is advancing the strategies and activities or opportunities for the future you'd like to bring to your community.

Polling

Polling question: Share one next step you will take as result of this webinar:

- Share webinar information with a friend or colleague
- Connect offline with someone I met during the event for further conversation
- Do more research and reading about a particular strategy or activity
- Something else

Thank you & Next Steps

- Join us for another event in the series...
 - Behavioral Health on July 13th
 - Housing and Food on September 22nd
- Recording and slides will be emailed to registrants and available on the event website (healthoregon.org/ship)
- Email publichealth.policy@state.or.us to get invited to the Healthy Communities Basecamp for continued conversation and sharing
- Please complete evaluation survey - your feedback will be used to inform future HTO in action events