

## SHIP implementation and tracking

### How will SHIP progress be tracked?

Each priority has an objective used to track progress. PHD will periodically publish summaries, reports and contextual data on these objectives through dashboards available on the website.

### Are there new funding resources associated with the SHIP?

The SHIP does not have a new or independent funding source. The work in this plan is funded through existing public health programs. In many cases, funding is provided to local public health authorities (LPHAs), the Nine Federally Recognized Tribes in Oregon, healthcare providers and community partners to strengthen the work and impact.

### Why aren't specific priority populations identified in the SHIP?

Feedback from partners and community members supported a universal approach to the SHIP, recognizing that public health works to improve the health of all people, of all ages, in all places.

PHD programs responsible for SHIP strategies tailor their work to reach communities most affected by health inequities. This keeps public health's focus on the people most affected by the health issue. For example, programs focusing on reducing tobacco use and reducing falls among older adults work to reach different populations.

The SHIP recognizes the diverse experiences of our population and strives to have inclusive strategies that benefit everyone, regardless of their background or location. Within each of the plan's four priority areas, PHD has included strategies that address people's different access to community resources and changing health needs through the life span.

## Stay involved

We have resources and information on our website, which you can visit by scanning the following QR code:



Or email us at [Oregon.ship@oha.oregon.gov](mailto:Oregon.ship@oha.oregon.gov) to learn about other ways to be involved.

Another way to stay connected is to learn about your community health improvement plan. Find out about health priorities in your community and how local organizations are working together to address those priorities.

# 2025-2029 State Health Improvement Plan

## Frequently Asked Questions

## Understanding the State Health Improvement Plan (SHIP)

### What is the SHIP?

The SHIP is a plan that identifies our state's health priorities. It guides community health improvement plans and state agency policies, partnerships and investments. The SHIP tracks progress through strategies and metrics.

1. **Priorities:** Identified through the State Health Assessment and community engagement, these are the issues that matter most to Oregonians. Priorities reflect the high-level areas where we aim to see meaningful, long-term change.

2. **Strategies:** Once priorities are set, we outline specific, actionable steps to address each one. Strategies focus on public health's core work, detailing the actions that will move us toward better health and equity outcomes.
3. **Metrics:** To measure progress over the five-year SHIP period, we establish metrics. These metrics are crucial for tracking the effectiveness of our strategies and ensuring transparency for our partners, and the communities we serve.

### What are Oregon's priorities for 2025-2029?

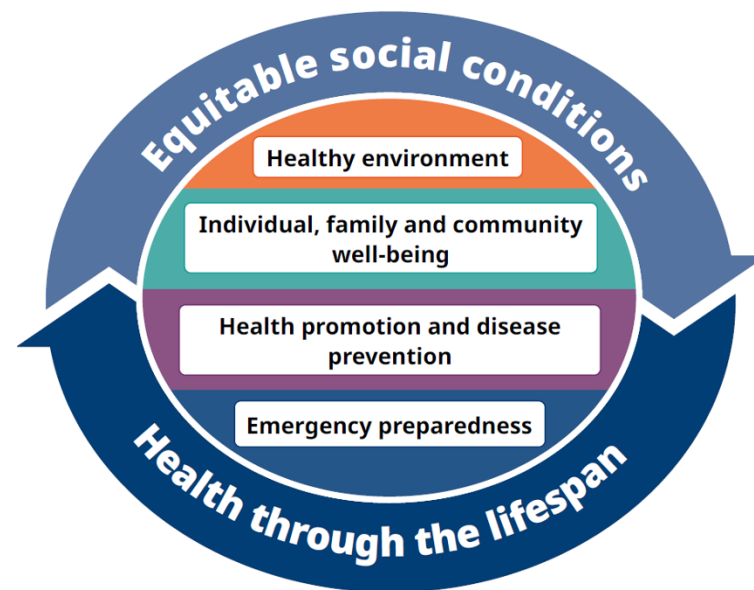
Oregon's 2025-2029 SHIP takes a universal approach, recognizing that public health works to improve the health of all people, of all ages, in all places. The SHIP includes four priorities, shown in the center of the graphic on the right.

### Why does Oregon have a SHIP?

Both the State Health Assessment (SHA) and the SHIP are required for OHA Public Health Division (PHD) reaccreditation. Those requirements describe the assessment and plan, including a multi-sector steering committee, a set of health indicators, and strategies and metrics to track progress.

Beyond accreditation, having a SHIP is a nationally recognized best practice. States with robust SHIPs see stronger collaboration, more efficient use of resources, and ultimately better health outcomes.<sup>1</sup>

<sup>1</sup> *Value & Impact of Public Health Accreditation*, Public Health Accreditation Board (PHAB). 2025. <https://phaboard.org/wp-content/uploads/Value-and-Impact-2025-1.pdf>



### What is the relationship between the SHA and the SHIP?

The SHA is an assessment that provides critical information for the SHIP. It includes demographic changes, public health capacity and health status of people in Oregon. The 2025 SHA helped identify focus areas reflected in the SHIP.

## How was the SHIP developed?

### How were the priorities developed?

PHD worked with a steering committee of partners and community members to develop SHIP priorities. These draft priorities were shared widely with partners, communities and OHA staff for feedback and input. The steering committee used that feedback to finalize the priorities.

### How were the strategies developed?

Strategies define statewide work led by the public health system. These strategies are led by or funded through PHD and have milestones that can be achieved over these five years.

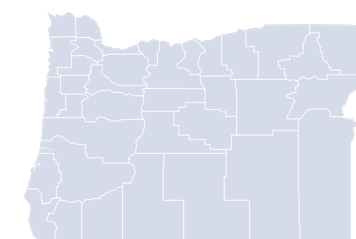
PHD programs identified existing strategies and activities that align with the four priorities chosen by the steering committee.

### Why is this SHIP focused on public health activities?

Feedback from partners and PHD leadership, along with lessons learned from the previous SHIP, highlighted the need for a focused public health approach. This feedback directed OHA to:

- Stay focused on areas where public health can make progress over the next five years
- Be clear about the work that public health can advance
- Communicate more about the SHIP's public health priorities

The strategies for the current SHIP are designed to be attainable, measurable and resourced. They include activities that the governmental public health system can achieve in coordination with partners. This reflects a more intentional focus on public health scope while still supporting broad community health outcomes.



All people.  
All ages.  
All places.



Healthy environments



Individual, family and community well-being



Health promotion and disease prevention



Emergency preparedness

## SHIP alignment with other plans

### What is the alignment between the SHIP and OHA strategic plan?

The SHIP aligns with OHA's Strategic Plan and its vision to eliminate health inequities by 2030. It reflects the public health system's work to achieve that vision. Specifically, many of the SHIP priorities — and their corresponding strategies and metrics — align with Pillar 3 of the OHA Strategic Plan.

For example, the following are tracked in both the SHIP and the OHA Strategic Plan:

- Childhood blood lead levels
- Two-year-old immunizations
- Hospitalizations, emergency department and urgent care visits due to heat

### Do the SHIP strategies align with any other plans?

Most SHIP strategies align with statewide efforts and plans, complementing work that happens across state agencies and partners. When SHIP strategies include statewide plans, this shows how the work of public health fits within a larger effort.