

Community Public Health Equity Awardee Kickoff Meeting



CONNECTING WITH PEOPLE

FIRST GENERATION COLLEGE STUDENT

MY WHOLE LIFE... LEARNING ABOUT PUBLIC HEALTH WITHOUT KNOWING IT

WELCOME DOLLY ENGLAND

AKA the BEYONCÉ of PUBLIC HEALTH

LIVED & WORKED in ALASKA

WEARABLE ART!

THIS is NEW & INNOVATIVE WORK!
SO MANY POSSIBILITIES for COMMUNITY ENGAGEMENT!

MEET OUR GRANT SUPPORT TEAM

OHA Community ENGAGEMENT TEAM



Community Public Health Equity Awardee Kickoff Meeting

May 5, 2022

"OUR DIFFERENCES MAY BE APPARENT but NOT that SIGNIFICANT. OUR COMMONALITIES MAY BE SIGNIFICANT but NOT as APPARENT."

IMPORTANCE of joy and celebration

LEARNING from COMMUNITY & FRONTLINE EXPERIENCES DURING COVID-19

LOOKING at OUR INTERSECTIONALITIES

GO BEYOND LABELS WHOLE PERSON

EVIDENCE-BASED PRACTICE?

THIS is VISIONARY, LANDMARK WORK

UPSTREAM WORK

CONNECTING, RELATIONSHIP & **TRUST** with THOSE WE SERVE

BEING BETTER LISTENERS

SELF-CARE & SHOWING UP for OTHERS

ASKING, WHAT DO YOU **NEED?**

GENERATING KNOWLEDGE **PRACTICE-BASED EVIDENCE!**

RESPONDING to LOCAL CONTEXT & NEEDS

KEYNOTE **DR. JAMES MASON**

LEARNING from GRANTEEES

JUSTICE
JEDI
DEIB
BELONGING

YOUR WORK is EMINENTLY NEEDED.

STRUCTURAL BARRIERS

Community Public Health Equity Awardee Kickoff Meeting



WHAT PROJECT IS YOUR ORGANIZATION MOST EXCITED TO DO THROUGH THIS GRANT?

IMAGERY, DESCRIPTORS, SYMBOLS?

WHAT DO YOU WANT OTHER COMMUNITY MEMBERS TO KNOW ABOUT YOUR WORK?



FOOD SAFETY



DREAMING OF SUSTAINABLE, LONG TERM FUNDING

MEANINGFUL WORK WITH YOUNG PEOPLE



a THREAD that WEAVES through OUR WORK

RESILIENCE, SKILLS & HISTORIES of COMMUNITY

INSPIRED TO DO THIS WORK BY LOSING MY FATHER



a BLANKET

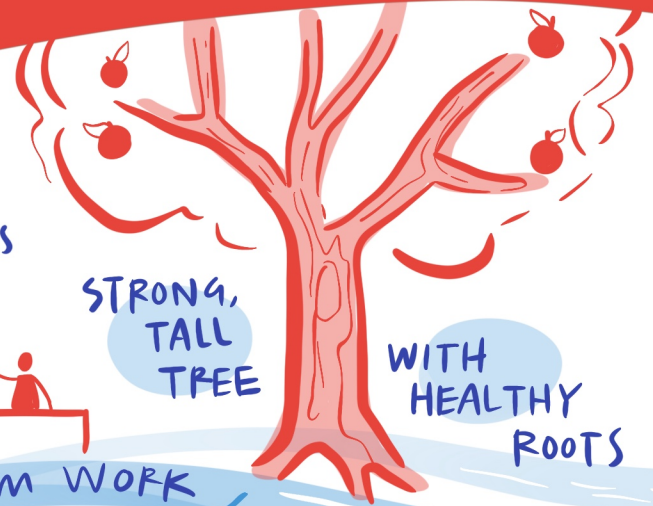


LEARNING ABOUT OTHERS DOING THIS WORK!



UPSTREAM WORK

STRONG, TALL TREE

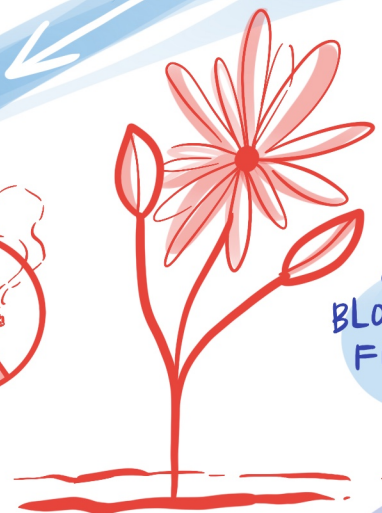


WITH HEALTHY ROOTS

IF THERE WERE A BIKE NEARBY, I WOULD USE IT!



a BLOOMING FLOWER



SEEDS OF HEARING

WHAT INSPIRED YOU? IMAGES or SYMBOLS?

HOW WILL YOU

USE WHAT YOU HEARD?

Community Public Health Equity Awardee Kickoff Meeting

WHAT is the **LEGACY**
WE WANT to LEAVE?

GRATITUDE and
ADMIRATION

OUR DEFINITION of
HEALTH EQUITY REQUIRES
that WE ACKNOWLEDGE
HISTORICAL INEQUITIES



MODERNIZING OUR HEALTH SYSTEM and
WAYS of **WORKING**

BUILDING
RELATIONSHIPS

OUR **BOLD**
AUDACIOUS
GOAL is
to ELIMINATE
HEALTH
INEQUITIES
by **2030**

CLOSING REMARKS
**DIRECTOR RACHAEL
BANKS**

ENGAGING WITH COMMUNITIES
from a **PLACE** of **STRENGTH**

