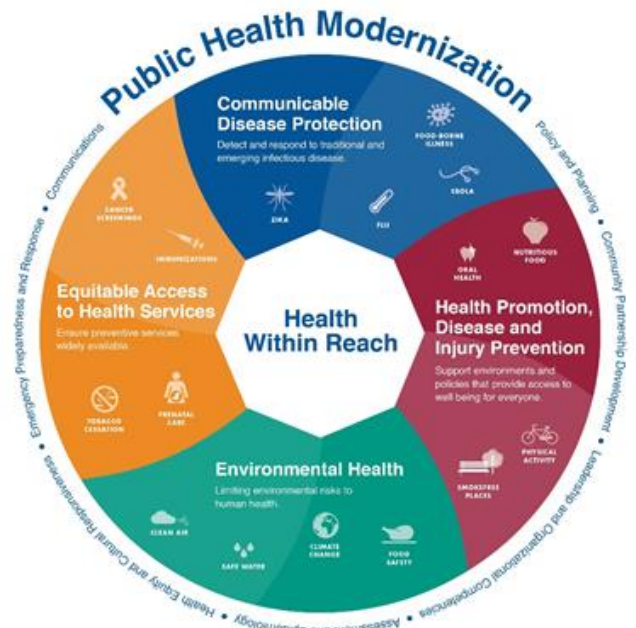


## PUBLIC HEALTH MODERNIZATION - POP 417

### ***A commitment to public health resilience, response and recovery***

Oregon Health Authority goal: eliminate health inequities by 2030

People in Oregon recognize that systemic racism and historical and contemporary injustices have led to health inequities in the state. These injustices are the root cause of COVID-19-related health inequities seen today. Environmental threats like wildfire and smoke disproportionately impact communities of color, tribal communities, persons with physical, developmental and intellectual disabilities, persons living in congregate care and low-income communities. **Complex public health problems require a nimble, community-based and equity-centered public health system.** Without this system, Oregon risks its public health resilience, response and recovery, and future health threats will continue to exacerbate health inequities.



### ***A \$30M investment in public health modernization means:***

- Investing in communities to co-create **solutions** to public health issues in culturally relevant and linguistically appropriate ways
- Local and regional **strategies the address the community's priorities**
- Collecting **comprehensive, relevant and secure health data** to identify and mitigate risks to health and disproportionate impacts to communities experiencing racism and oppression
- **Partnership across state agencies** to promote environmental health policies and programs
- **Measurable results**
  - Ongoing evaluation demonstrates successes, increases accountability, and ensures the system is creating efficiencies and improving service delivery;
  - From 2016-2019, childhood immunization rates increased from 66% to 71%;
  - 81% of long-term care organizations in Central Oregon received infection prevention trainings between 2017-2019. These partnerships have been instrumental to the COVID-19 response;
  - In Lane County, a partnership with PeaceHealth resulted in the delivery of more than 750 pneumococcal vaccines to hospitalized at-risk adults, increasing the vaccination rate for high-risk patients by 12% at participating hospital sites.

### **Without public health modernization, Oregon risks:**

- Continued inequities in health outcomes, as Oregon’s governmental public health system struggles to address the ongoing health and social impacts of COVID-19;
- Losing essential, basic public health protections for some Oregonians;
- Fragmented and inadequate responses to multiple, simultaneous public health and environmentally related crises such as COVID-19, influenza and wildfires.

### **Public health modernization is implemented across the state:**

- *Local public health authorities*
  - Engage partners and the community **build communities’ capacity** for emergency response to communicable disease and environmental threats
  - Increased local epidemiology expertise improves communities’ ability to **identify and track risk** and quality improvement initiatives
  - Partnerships **with healthcare providers** allow for expanded prevention initiatives
  - **Engage in** local and regional strategies for ‘all hazards’ **resiliency planning**
- *Tribal public health authorities*
  - **Partner with communities and medical providers** on disease prevention
  - **Identify tribal best practices for modernizing** tribal public health
- *Community-Based Organizations*
  - **Co-create community climate equity** and resilience plans
  - Develop **culturally and linguistically responsive** community engagement and education strategies that reduce stigma
  - Work with public health to **identify and connect with hard to reach populations**
- *Oregon Health Authority*
  - **Provide leadership and statewide infrastructure** for community-based and equity-centered approaches.
  - With partners, **develop and implement a framework for using data** to identify leading environmental risks to human health and corresponding plans to mitigate risks
  - **Coordinate acute and communicable disease outbreak investigations**, including with Oregon State Public Health Laboratory
  - **Invest in statewide public health data** systems.

People in Oregon deserve a public health system that identifies, plans for and prevents communicable and environmental threats. Building upon public health improvements to date, Oregon has the opportunity to ensure all people and communities thrive with optimal physical, mental and social well-being and have access to quality, affordable health care.

<b>Governor’s Recommended Investment</b>	<b>2021-2023</b>
Local Public Health Authorities	\$15,438,000
Tribal Public Health Authorities	\$2,178,000
Community-Based Organizations	\$6,537,000
Oregon Health Authority	\$5,847,000
Total	\$30,000,000

For more information, visit [healthoregon.org/modernization](https://healthoregon.org/modernization) or email [publichealth.policy@state.or.us](mailto:publichealth.policy@state.or.us).