

ICAA IMPLEMENTATION FLOW CHART (UPDATED JANUARY 2018)
POTENTIAL OUTSIDE ENCLOSED AREA PROCEDURE
REFERENCE OAR 333-015-0025 THROUGH 333-015-0085

Figure 1: Response to initial complaint

*Note: if potential outside enclosed area documentation is forwarded to OHA, enter the site visit date in WEMS only after OHA makes an enforcement determination.

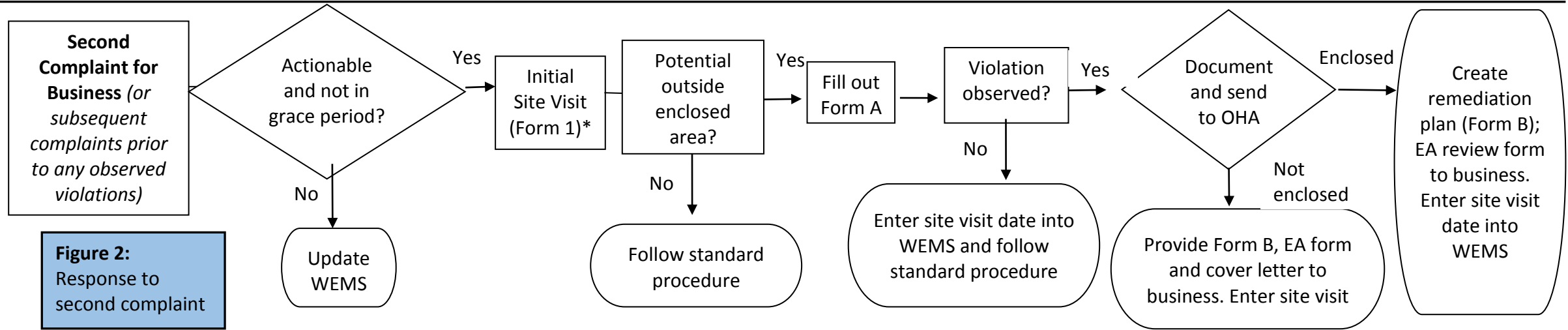
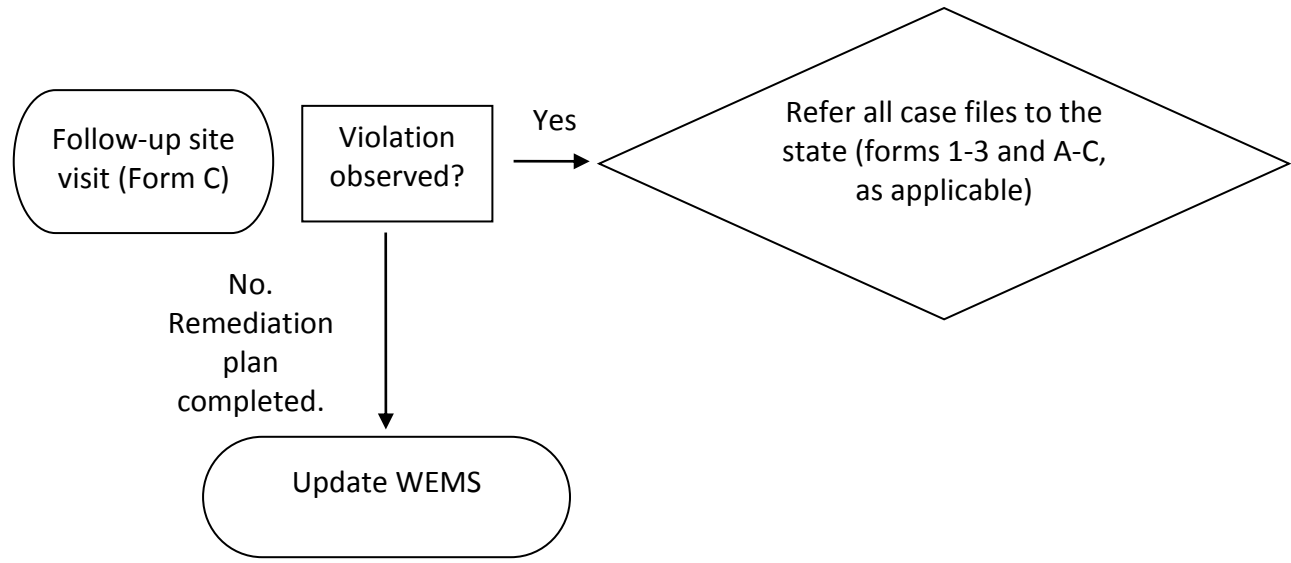


Figure 2: Response to second complaint



Subsequent Complaint for Business, post-remediation plan?
Follow Figure 3 in Standard Procedure Flow Chart