

Indoor Clean Air Act Expansion Evaluation

Improving Policy Change Practices in Oregon: Point-in-time Assessment 1

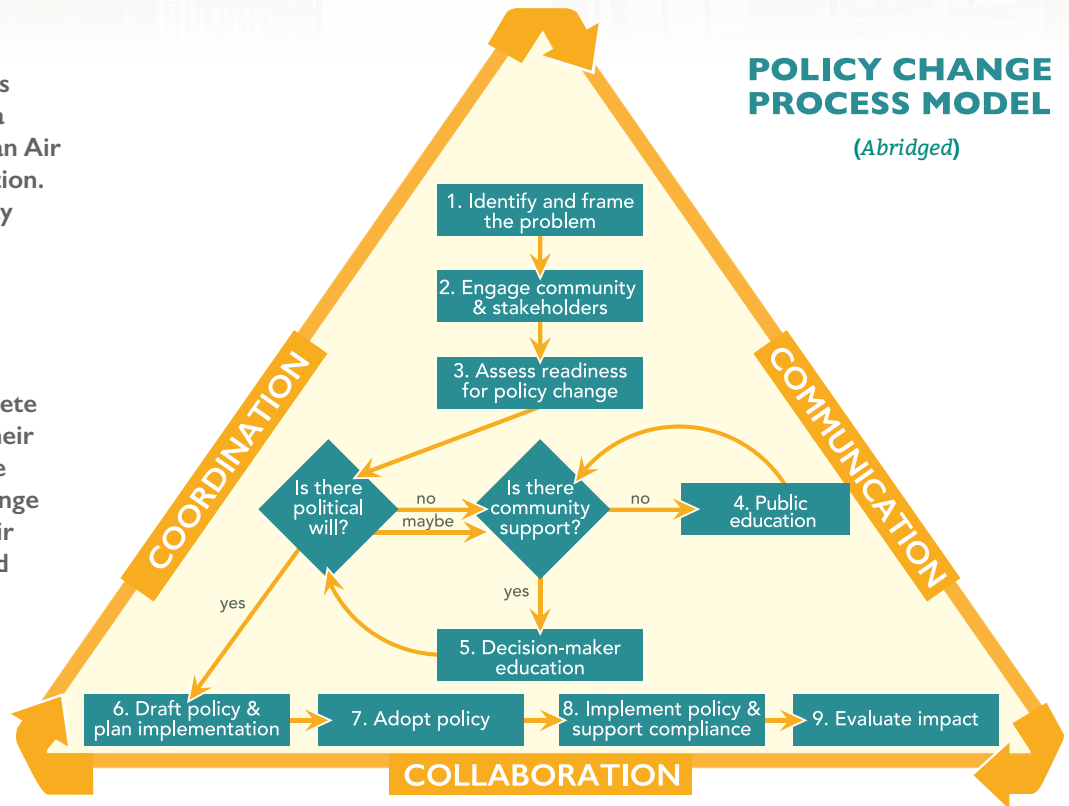
Two point-in-time assessments (PIT) are being conducted as a component of the Indoor Clean Air Act (ICAA) Expansion Evaluation. The first was conducted in May 2018 and the second will be conducted in summer 2019.

All Tobacco Prevention and Education Program (TPEP) grantees were asked to complete a PIT Assessment regarding their current status of policy change progress, using the Policy Change Process Model for each of their ICAA expansion strategies and jurisdictions.

For more information on the assessment, such as inclusion/exclusion criteria, visit:
<http://redegroup.co/oregon-icaaee-and-tre/>

POLICY CHANGE PROCESS MODEL

(Abridged)



How community programs can use this information

1. Use results from the assessment to inform discussions with your Regional Support Network
2. Contact coordinators in other counties to discuss policy strategies
3. Share information with health department leadership and discuss ways to protect and strengthen the ICAA

47 policy initiatives
were reported by
TPEP grantees

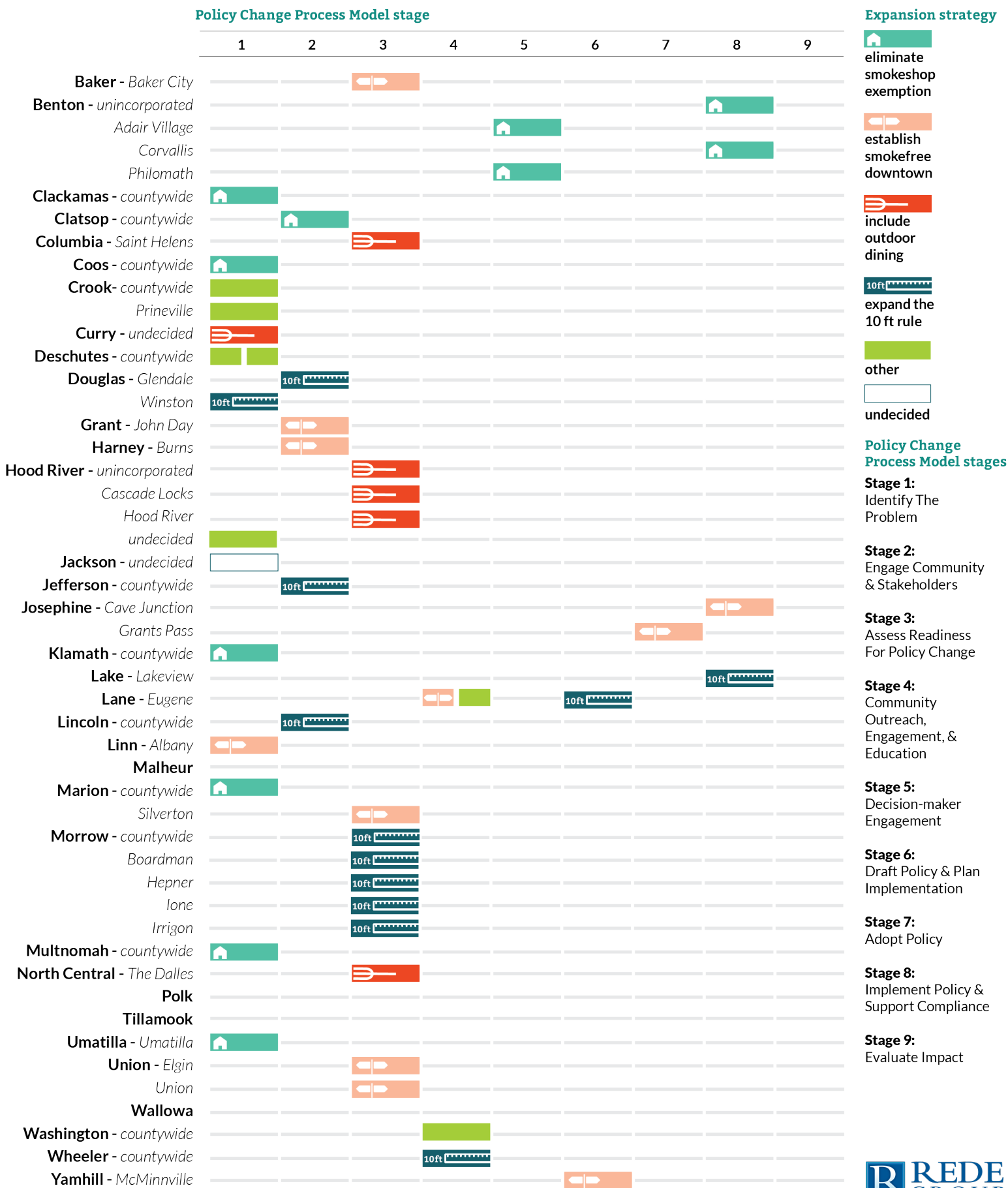
ICAA Expansion Strategies

Number of initiatives:

12	11	11	6	7
Expand the 10ft rule	Eliminate smoke shop exemption	Establish smokefree downtown	Include outdoor dining	Other*
10ft				
Douglas Jefferson Lake Lane Lincoln Morrow Wheeler	Benton Clackamas Clatsop Coos Klamath Marion Multnomah Umatilla	Baker Grant Harney Josephine Lane Linn Marion Union Yamhill	Columbia Curry Hood River North Central	Crook Deschutes Hood River Lane Washington

*Other includes removing other ICAA exemptions and policies prohibiting indoor public consumption of marijuana.

Findings: Point-in-time Assessment



For more information about the data presented in this chart and a presentation with the information please visit: <http://redegroup.co/oregon-icaee-and-tre/>