



Indoor Clean Air Act Expansion Evaluation (ICAAEE) Point-in-time Assessment (PIT 1)

September 2018

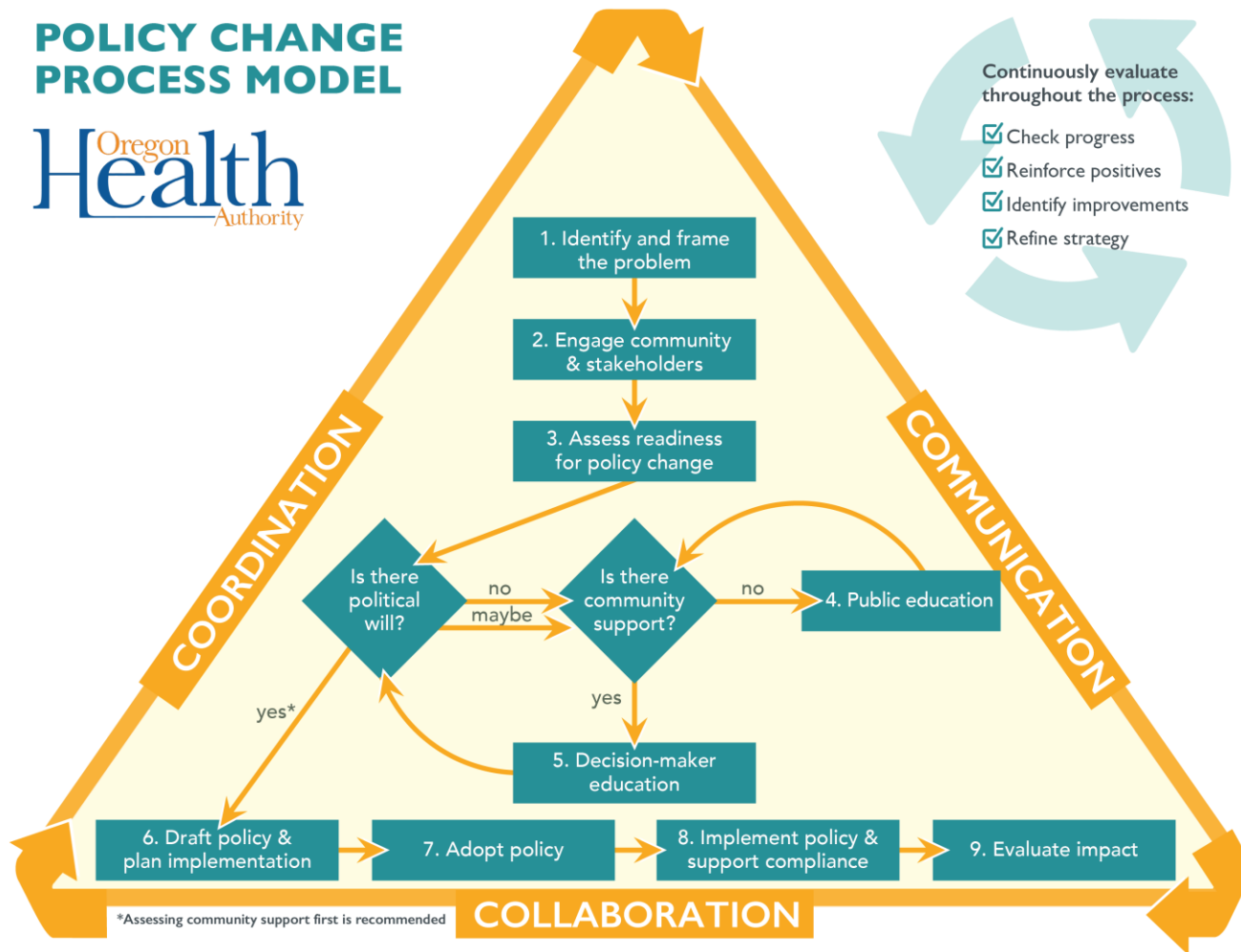


ICAAEE PIT 1



- Two point-in-time assessments (PIT) are being conducted as a component of the Indoor Clean Air Act (ICAA) Expansion Evaluation. The first was conducted in May 2018 and the second will be conducted in summer 2019.
- All Tobacco Prevention and Education Program (TPEP) grantees were asked to complete a PIT Assessment regarding their current status of policy change progress, using the Policy Change Process Model for each of their ICAA expansion strategies and jurisdictions.
- For more information on the assessment, such as inclusion/ exclusion criteria, visit: <http://redegroup.co/oregon-icaaee-and-tre/>

POLICY CHANGE PROCESS MODEL



*Assessing community support first is recommended

+ ICAAEE PIT 1



- Survey distributed in May to all TPEP programs
- 100% (n=33) of TPEP programs completed the survey



ICAAEE PIT 1 Results

47

policy initiatives
were reported by
TPEP grantees

10ft 

expand the
10 ft rule

eliminate
smoke shop
exemption



establish
smoke-free
downtown







include
outdoor dining



ICAA Expansion Strategies

Number of initiatives:

12	11	11	6	7
Expand the 10ft rule 	Eliminate smokeshop exemption 	Establish smokefree downtown 	Include outdoor dining 	Other*
Douglas Jefferson Lake Lane Lincoln Morrow Wheeler	Benton Clackamas Clatsop Coos Klamath Marion Multnomah Umatilla	Baker Grant Harney Josephine Lane Linn Marion Union Yamhill	Columbia Curry Hood River North Central	Crook Deschutes Hood River Lane Washington

*Other includes removing other ICAA exemptions and policies prohibiting indoor public consumption of marijuana.

+ 12 policy initiatives reported by 7 TPEP programs

10ft 

expand the
10 ft rule

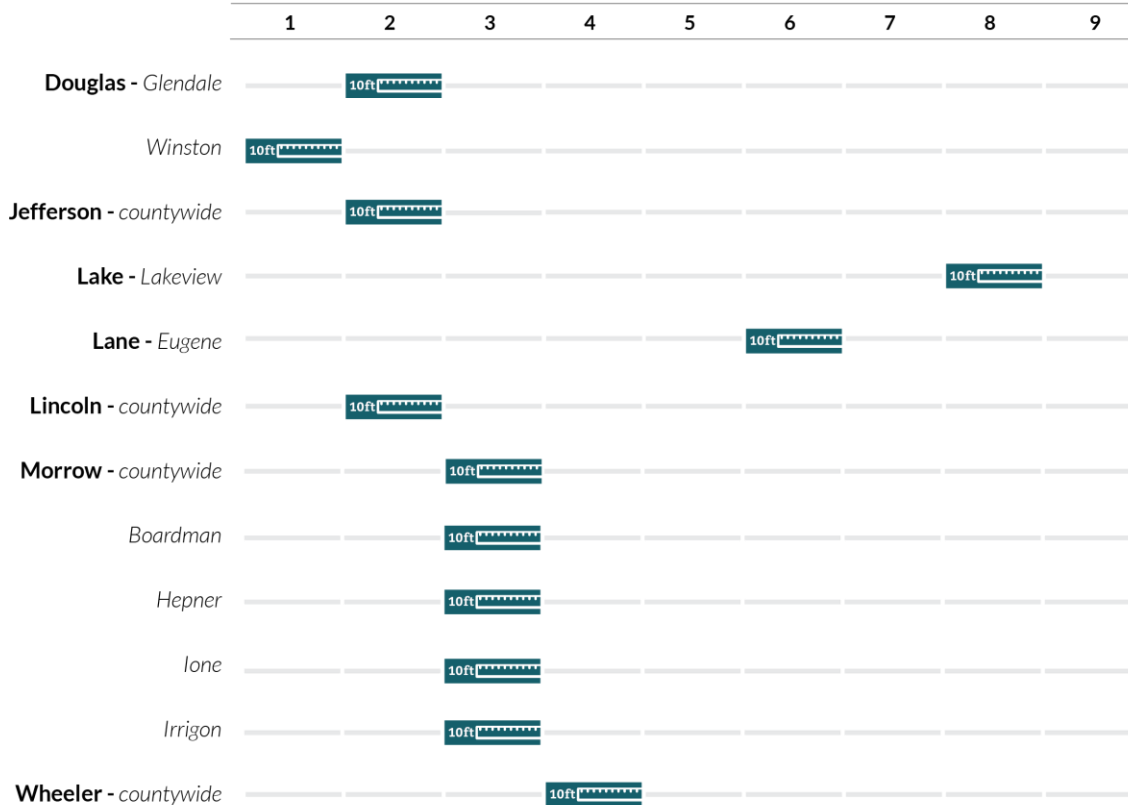
- Douglas
- Jefferson
- Lake
- Lane
- Lincoln
- Morrow
- Wheeler

Expansion strategy

10ft 

expand the
10 ft rule

Policy Change Process Model stage



Policy Change Process Model stages

Stage 1:

Identify The
Problem

Stage 2:

Engage Community
& Stakeholders

Stage 3:

Assess Readiness
For Policy Change

Stage 4:

Community
Outreach,
Engagement, &
Education

Stage 5:

Decision-maker
Engagement

Stage 6:

Draft Policy & Plan
Implementation

Stage 7:

Adopt Policy

Stage 8:

Implement Policy &
Support Compliance

Stage 9:

Evaluate Impact

10ft 

+ 11 policy initiatives reported by 8 TPEP programs

eliminate
smoke shop
exemption



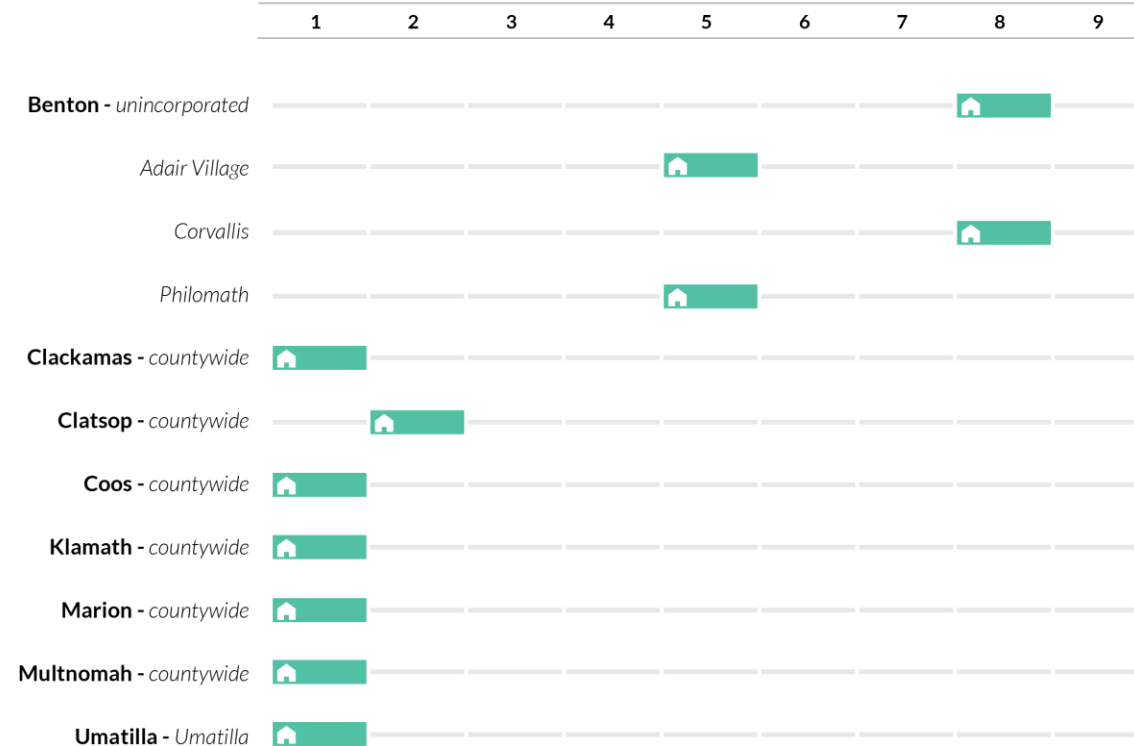
- Benton
- Clackamas
- Clatsop
- Coos
- Klamath
- Marion
- Multnomah
- Umatilla

Expansion strategy

 eliminate
smokeshop
exemption



Policy Change Process Model stage



Policy Change Process Model stages

Stage 1:

Identify The
Problem

Stage 2:

Engage Community
& Stakeholders

Stage 3:

Assess Readiness
For Policy Change

Stage 4:

Community
Outreach,
Engagement, &
Education

Stage 5:

Decision-maker
Engagement

Stage 6:

Draft Policy And
Plan Implementation

Stage 7:

Adopt Policy

Stage 8:

Implement Policy &
Support Compliance

Stage 9:

Evaluate Impact

+ 11 policy initiatives by 9 TPEP programs

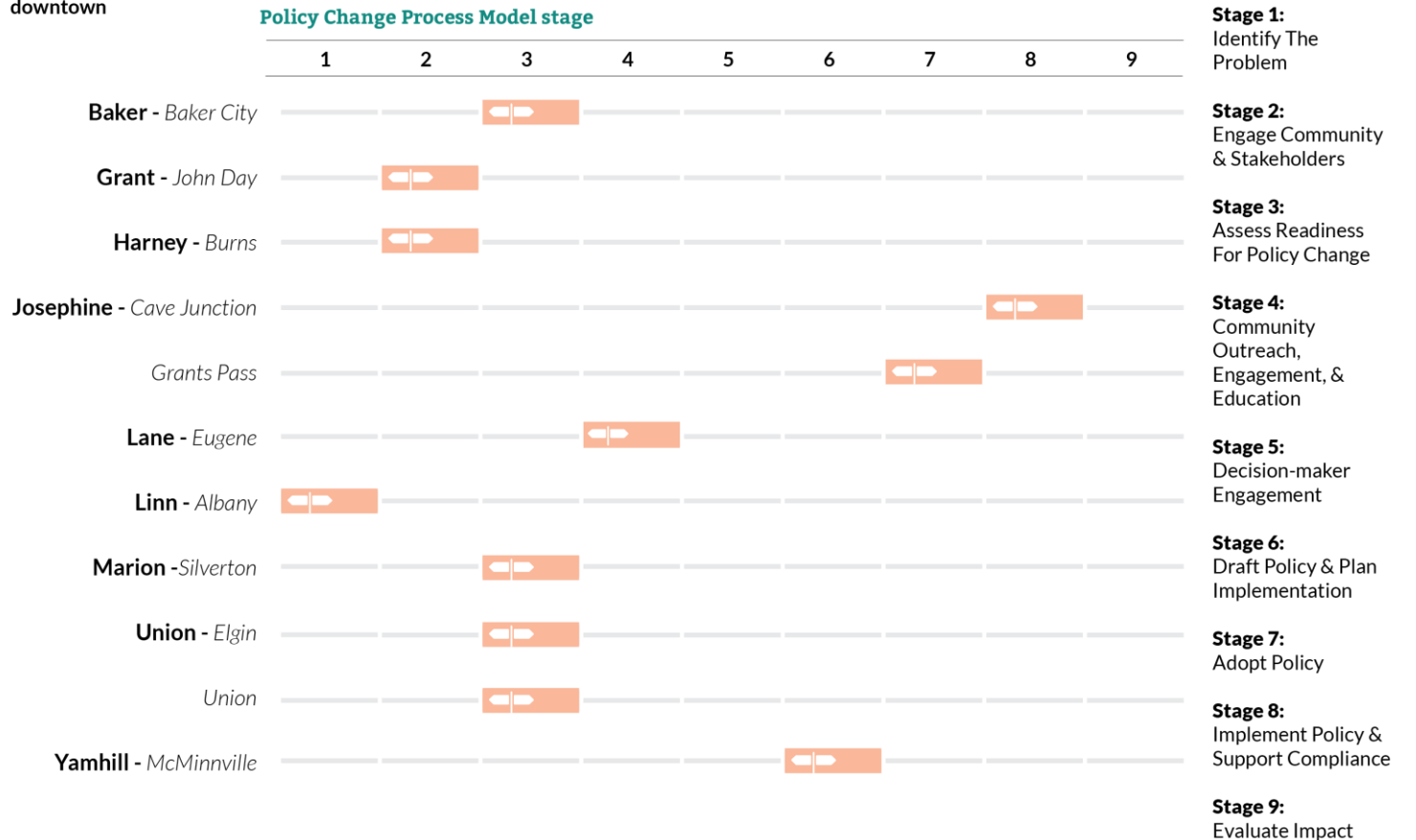
- Baker
- Grant
- Harney
- Josephine
- Lane
- Linn
- Marion
- Union
- Yamhill

establish
smoke-free
downtown



Expansion strategy

establish
smokefree
downtown



+ 6 policy initiatives by 4 TPEP programs



include
outdoor dining

- Columbia
- Curry
- Hood River
- North Central

Expansion strategy



include
outdoor
dining

Policy Change Process Model stage

1	2	3	4	5	6	7	8	9
---	---	---	---	---	---	---	---	---

Columbia - *Saint Helens*



Curry - *undecided*



Hood River - *unincorporated*



Cascade Locks



Hood River



North Central - *The Dalles*



Policy Change Process Model stages



Stage 1:

Identify The
Problem

Stage 2:

Engage Community
& Stakeholders

Stage 3:

Assess Readiness
For Policy Change

Stage 4:

Community
Outreach,
Engagement, &
Education

Stage 5:

Decision-maker
Engagement

Stage 6:

Draft Policy & Plan
Implementation

Stage 7:

Adopt Policy

Stage 8:

Implement Policy &
Support Compliance

Stage 9:

Evaluate Impact

+ 7 policy initiatives by 5 TPEP programs

Other*

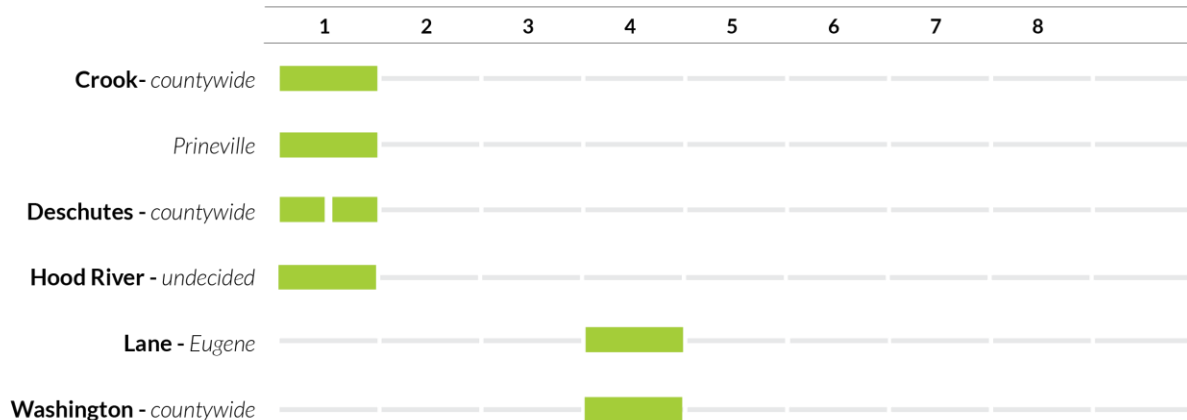
- Crook
- Deschutes
- Hood River
- Lane
- Washington

*Other includes removing other ICAA exemptions and policies prohibiting indoor public consumption of marijuana.

Expansion strategy

other

Policy Change Process Model stage



Policy Change Process Model stages

Stage 1:
Identify The Problem

Stage 2:
Engage Community & Stakeholders

Stage 3:
Assess Readiness For Policy Change

Stage 4:
Community Outreach, Engagement, & Education

Stage 5:
Decision-maker Engagement

Stage 6:
Draft Policy & Plan Implementation

Stage 7:
Adopt Policy

Stage 8:
Implement Policy & Support Compliance

Stage 9:
Evaluate Impact



How community programs can use this information:



1. Use results from the assessment to inform discussions with your Regional Support Network
2. Contact coordinators in other counties to discuss policy strategies
3. Share information with health department leadership and discuss ways to protect and strengthen the ICAA



About the PIT Assessment



For more information about the information presented in this slide deck visit:

<http://redegroup.co/oregon-icaaee-and-tre/>

