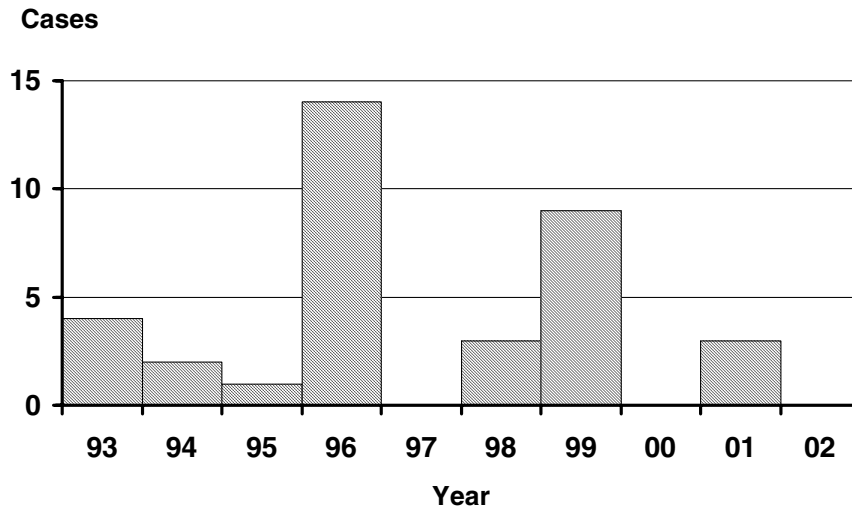


Measles

Measles is an acute, highly communicable viral illness, known for its red, blotchy rash that starts on the face and then becomes generalized. The rash is preceded by a febrile prodrome that includes cough, coryza, and conjunctivitis, and sometimes photophobia and Koplik spots. Diagnosis is confirmed by the presence of IgM antibodies in sera (in a patient who has not recently been immunized).

Measles is no longer endemic in the United States; cases are occasionally imported. There were no cases of measles last year in Oregon, and the risk of exposure to measles in Oregon remains low.

Measles by Year Oregon, 1993–2002



Incidence of Measles Oregon vs. Nationwide 1993–2002

Cases/100,000

