

Oregon Public Health Division

Published November 28th, 2022

Data at a Glance November 13th 2022 - November 19th 2022 (Week 46)

	Current Week (46)	Previous Week (45)
Percentage positive influenza tests¹	16.3%	9.3%
Portland tri-county influenza-associated hospitalizations²	22	15
Reported influenza outbreaks³	10	4
Influenza-associated pediatric mortality³	0	0
Percentage of emergency department visits for ILI⁴	3.1%	2.4%

¹Percent positivity based on data from Oregon reporters to the National Respiratory and Enteric Virus Surveillance System (NREVSS)

²Based on hospitalization surveillance in Clackamas, Multnomah, and Washington counties only.

³Based on reports made to the Oregon Health Authority

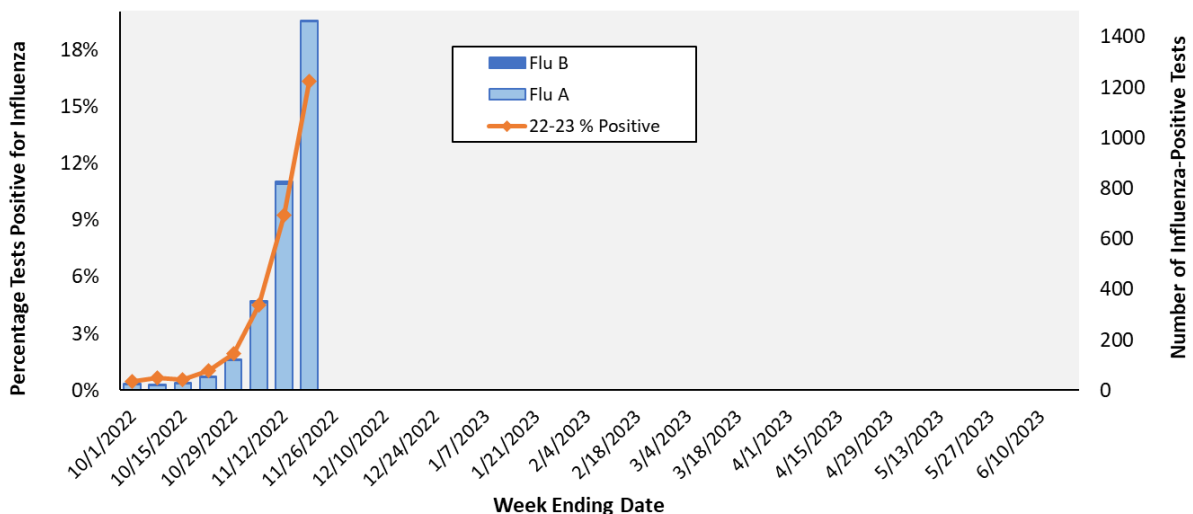
⁴Based on Oregon ESSENCE Syndromic Surveillance. Data represent statewide aggregate percent.

Laboratory Surveillance: The National Respiratory and Enteric Virus Surveillance System (NREVSS) is a laboratory-based system that monitors influenza and other respiratory viruses circulating in the United States. More information is at CDC's [website](#). Table 1 shows the tests conducted and results by region for the current week for influenza in specimens tested at the Oregon laboratories reporting to NREVSS. Participation by laboratories is voluntary, a list of participating laboratories can be found [here](#).

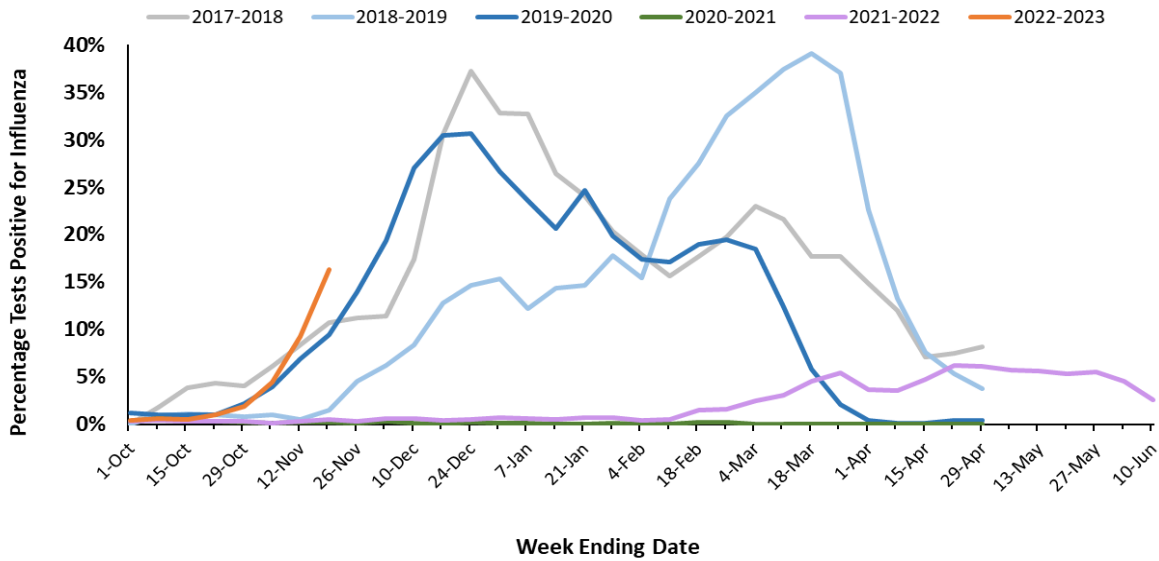
Table 1. Influenza Test Results in Oregon, NREVSS, Current Week, 2022–2023 Season

Region	Positive			Flu A		Flu B	
	Total Tests	No.	(%)	No.	(%)	No.	(%)
Portland Metro	4738	646	13.6%	646	100.0%	0	0.0%
Southern Oregon	1544	295	19.1%	294	99.7%	1	0.3%
Columbia Gorge	575	160	27.8%	159	99.4%	1	0.6%
Central Oregon	1461	278	19.0%	277	99.6%	1	0.4%
Willamette Valley	646	85	13.2%	85	100.0%	0	0.0%
State Total	8964	1464	16.3%	1461	99.8%	3	0.2%

**Figure 1. Oregon Influenza Laboratory Surveillance
Percent Positive Influenza Tests by Week, NREVSS, 2022-2023 Season**

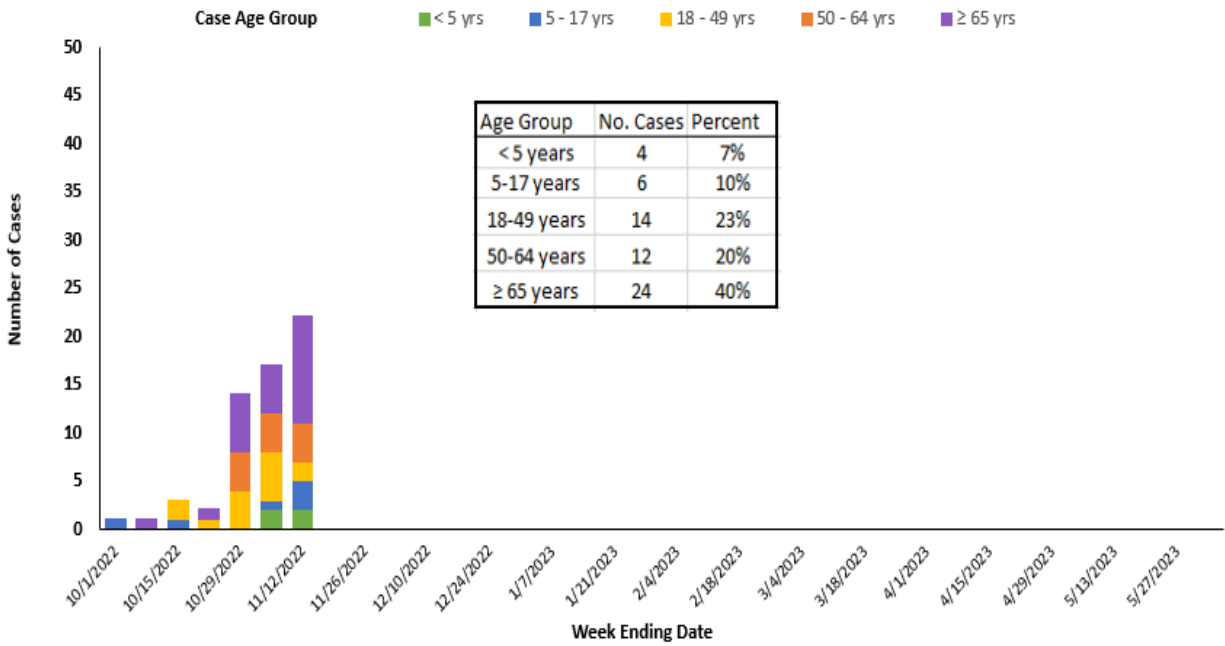


**Figure 2. Oregon Influenza Laboratory Surveillance
Percent Positive Influenza Tests by Season, NREVSS**

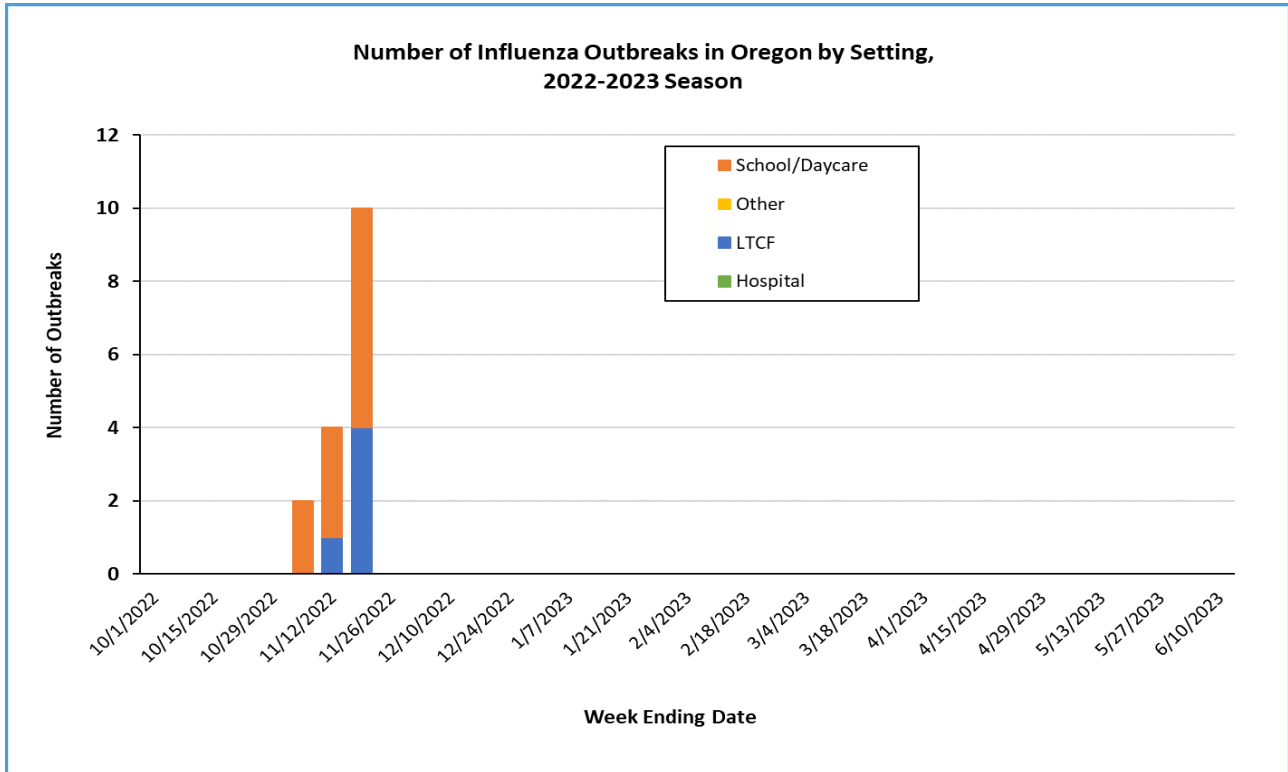


Portland Tri-County Influenza Hospitalizations: In Clackamas, Multnomah, and Washington counties there was 22 influenza-associated hospitalization reported during week 46 of 2022. There has been 60 reported hospitalization during the 2022-2023 season.

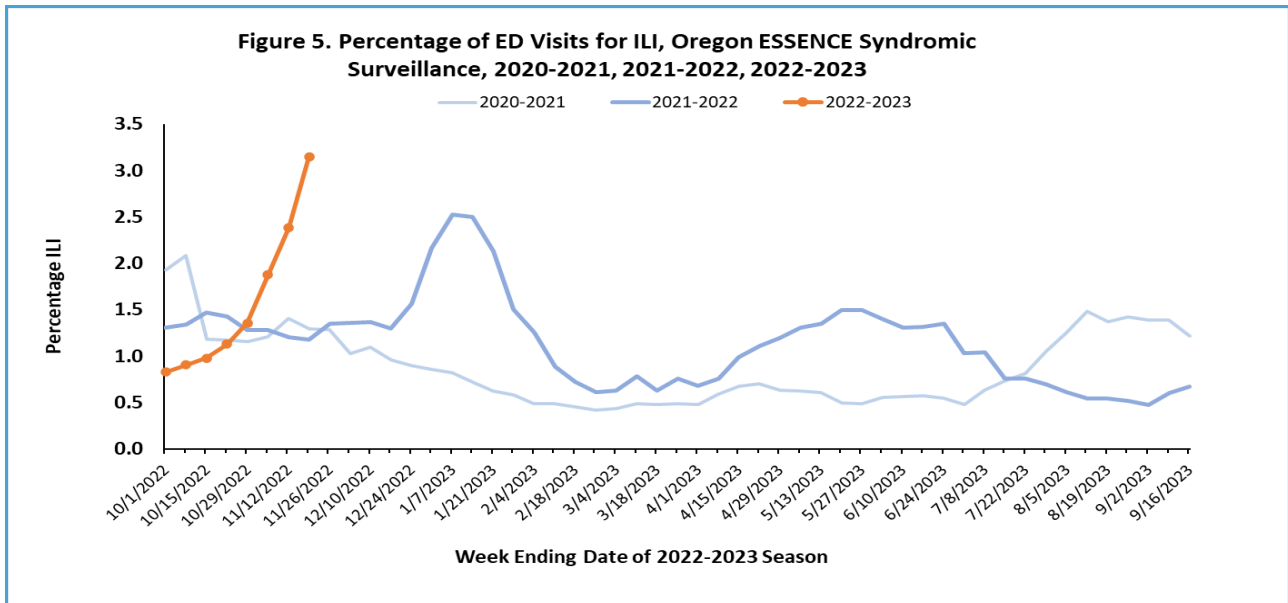
**Figure 3. Portland Metro Area Influenza-Associated Hospitalizations
by Week and Age Group, 2022-2023 Season**



Influenza Outbreaks: There were 10 influenza outbreaks reported during week 46, 2022, there have been 16 reported outbreaks during the 2022-2023 season.



Oregon ESSENCE Syndromic Surveillance: Oregon Public Health tracks hospital emergency department (ED) visits throughout the state using the Oregon ESSENCE syndromic surveillance system. ESSENCE categorizes chief complaints into syndrome categories, which include influenza-like illness (ILI). Figure 5, below, displays percentages for all of Oregon during this influenza season compared with the previous two influenza seasons. The percent of ED visits for ILI in all of Oregon was 3.1% during week 46, 2022.



Influenza-Associated Pediatric Mortality Surveillance: Influenza-associated deaths in children 17 years of age and younger are nationally notifiable. There were no pediatric influenza deaths in Oregon reported during week 46, 2022 and none yet reported to the Oregon Health Authority in the 2022—2023 influenza season.

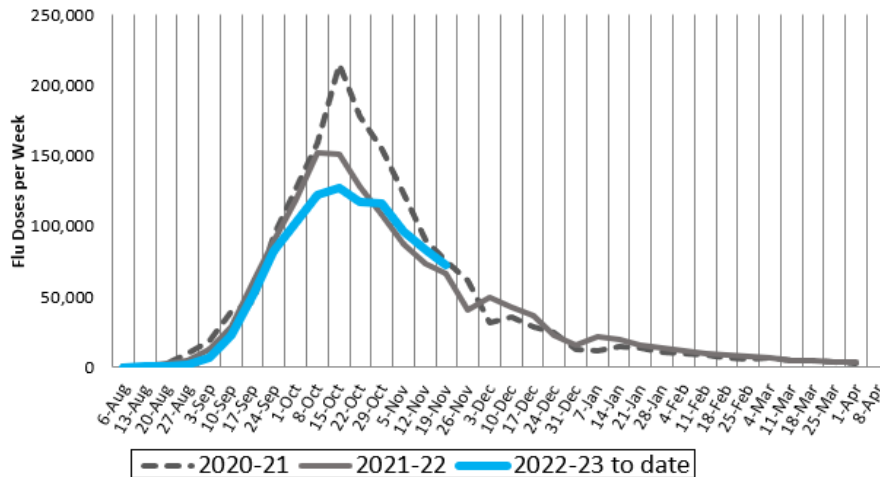
Influenza Immunizations:

The Oregon Immunization Program (OIP) tracks seasonal influenza immunizations on a weekly basis using the ALERT Immunization Information System (ALERT IIS). The ALERT IIS is Oregon’s registry of immunizations given to people in Oregon. As of Nov. 25th, the ALERT IIS has passed the one million record mark for influenza immunizations given to Oregonians this season. One purpose of OIP tracking is to assess how current season influenza immunizations to date compare to prior seasons. Total influenza immunizations remain below that of the last two seasons at this time.

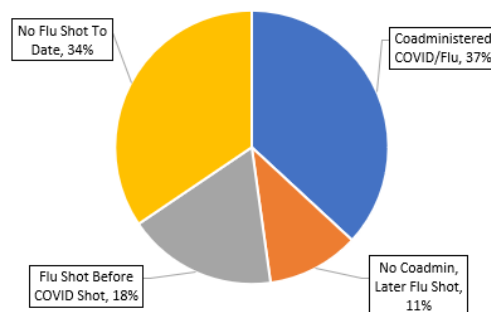
Declines in influenza immunizations for this season and the prior 2021-22 season compared to the 2020-21 are likely related to the overlap of COVID-19 booster recommendations and peak influenza immunization periods. Generally those getting a COVID-19 immunization by itself are unlikely to return later for a missed influenza immunization. Co-administering influenza immunizations at COVID-19 shot visits when possible is recommended. For this week we are including additional information around COVID and influenza immunizations. For the over 700,00 adults receiving COVID-19 immunizations from 9/1/22 to 11/21/22, 37% had a coadministered influenza immunization. For those who did not coadminister and did not have a prior flu shot, 76% did not return for a later flu shot. Age was not a substantial factor here- co-administration rates increased only from 35% to 36% from age 25 to 54, and from 36% to 39% from age 55 to 75+. Differences also exist by race and ethnicity, with White Oregonians having the highest coadministration rate.

OIP also tracks disparities in influenza immunization by race and ethnicity. For this week, OIP is including preliminary estimates of influenza immunization rates by race and ethnicity for the current season. In the chart below, ‘NHPI’ stands for Native Hawaiian/Pacific Islander, and ‘AIAN’ is for American Indian/Alaskan Native. The chart below reflects a long-standing disparity in Oregon for Black, Latinx, and AIAN populations in terms of influenza immunization. As a caveat, the ALERT IIS collects most but not all influenza immunizations given in Oregon. OIP also produces population adjusted influenza immunization rates at the end of the season which may differ from preliminary rate calculations.

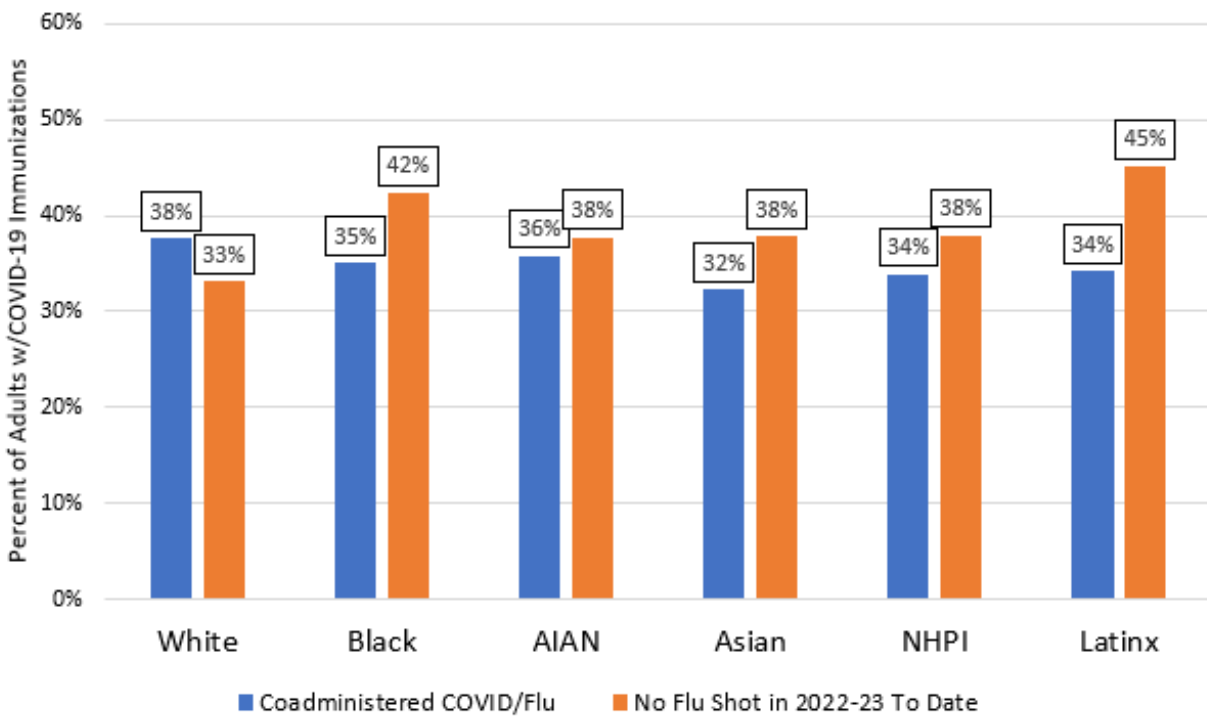
2022-23 Season Oregon Flu Vaccine Doses in ALERT IIS by Week



Oregon Adults With COVID Immunizations 9/1/22 to 11/21/22 By Flu Immunization Status



Influenza Immunization Status for Oregon Adults With COVID-19 Immunizations from Sept 1st to Nov 21st, by Race & Ethnicity



Preliminary Estimates of Oregon Influenza Immunization Rates by Race/Ethnicity as of Nov. 21st 2022, 3 Seasons

