

FluBites

November 23, 2025- November 29, 2025

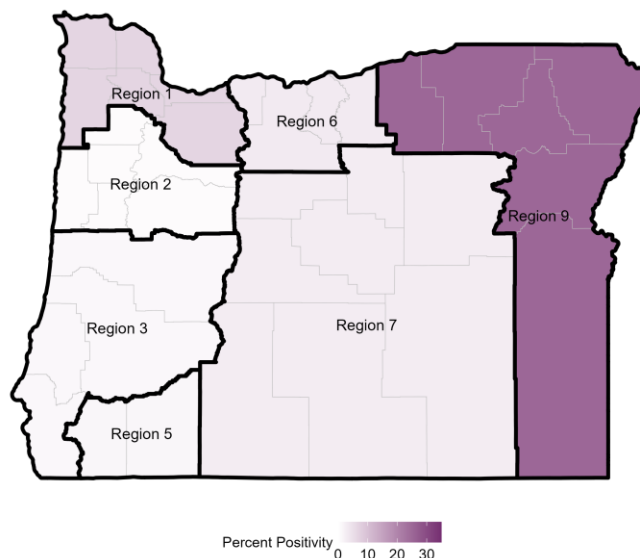
Influenza surveillance data at a glance		
	Percent Positivity ^a	Hospitalizations ^b
Current Week	6.0%	15
Previous Week	4.0%	11

^a Data from National Respiratory and Enteric Virus Surveillance System (NREVSS)

^b Hospitalization surveillance in Clackamas, Multnomah, and Washington counties only

Influenza Test Results in Oregon, NREVSS, Current Week				
Region	Influenza A	Influenza B	Total Tests	Percent Positivity
1	36 (6.8%)	0 (0.0%)	530	6.8%
2	2 (0.6%)	0 (0.0%)	327	0.6%
3	1 (1.2%)	0 (0.0%)	86	1.2%
5	4 (1.2%)	1 (0.3%)	330	1.5%
6	1 (3.4%)	0 (0.0%)	29	3.4%
7	11 (2.7%)	1 (0.2%)	401	3.0%
9	59 (25.3%)	0 (0.0%)	233	25.3%

Oregon Influenza Percent Positivity by Region

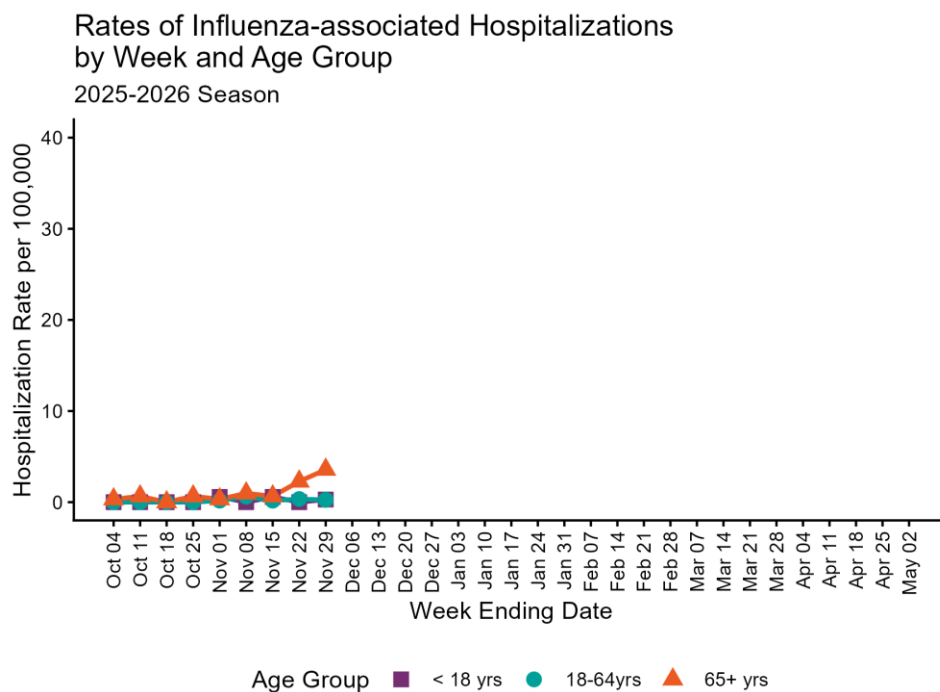


Regions with insufficient data are displayed as grey

Influenza Hospitalizations

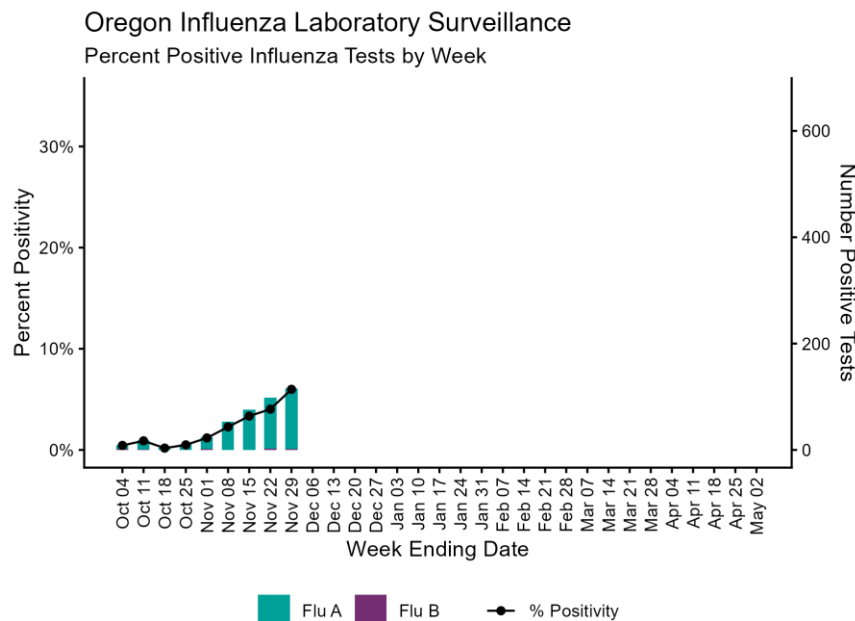
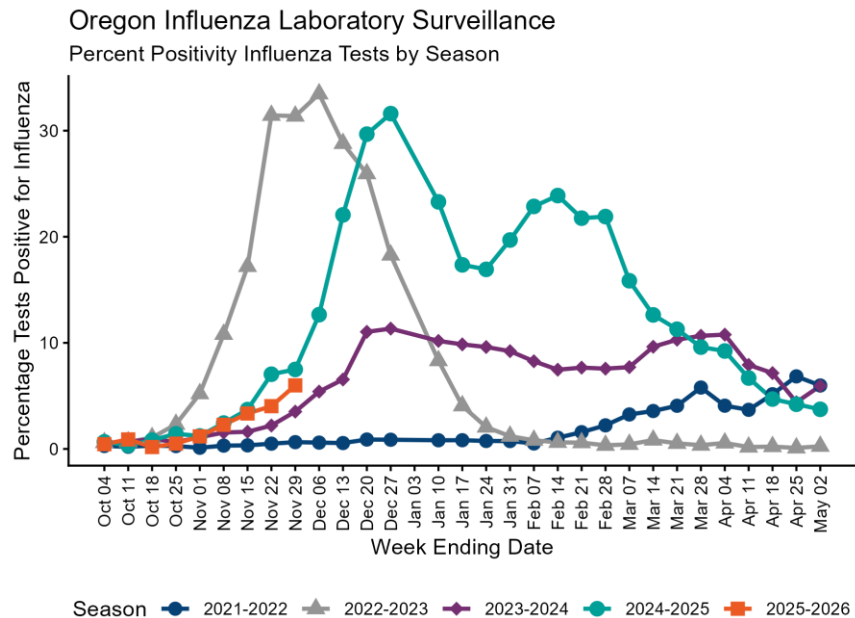
The Oregon Health Authority conducts population-based surveillance for laboratory-confirmed hospitalizations associated with influenza in Clackamas, Multnomah, and Washington counties during October 1 - April 30. To date, 52 hospitalizations have occurred during the 2025-2026 season. There were 15 hospitalizations reported during November 23, 2025 - November 29, 2025. The cumulative hospitalization rate for the 2025-2026 season is 2.9 per 100,000 people.

2025-2026 Influenza-Associated Hospitalizations		
Age Group (years)	N	Rate per 100,000 people
0-4	1	1.2
5-17	4	1.5
18-49	10	1.2
50-64	8	2.4
65+	29	9.7

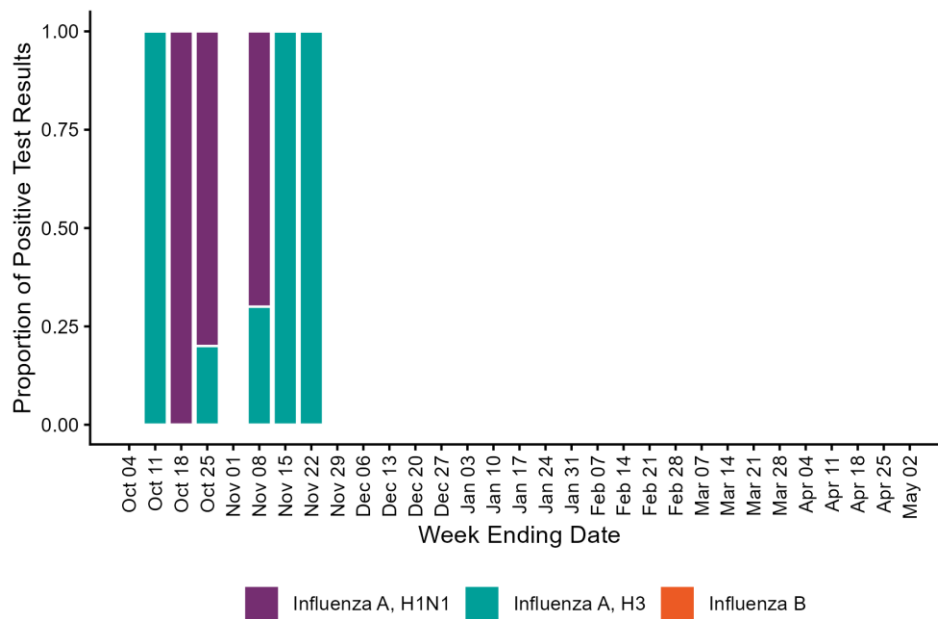


Laboratory Data

6.0% of specimens tested for influenza were positive during November 23, 2025 - November 29, 2025. 52.2% of positive influenza specimens tested at the Oregon State Public Health Laboratory (OSPHL) this season are influenza A (H1N1), 47.8% are influenza A (H3), and 0% are influenza B. National laboratory trends can be found at [CDC FluView](https://www.cdc.gov/fluview/).



Oregon State Public Health Laboratory (OSPHL) Influenza Testing 2025-2026 Season



Avian Influenza

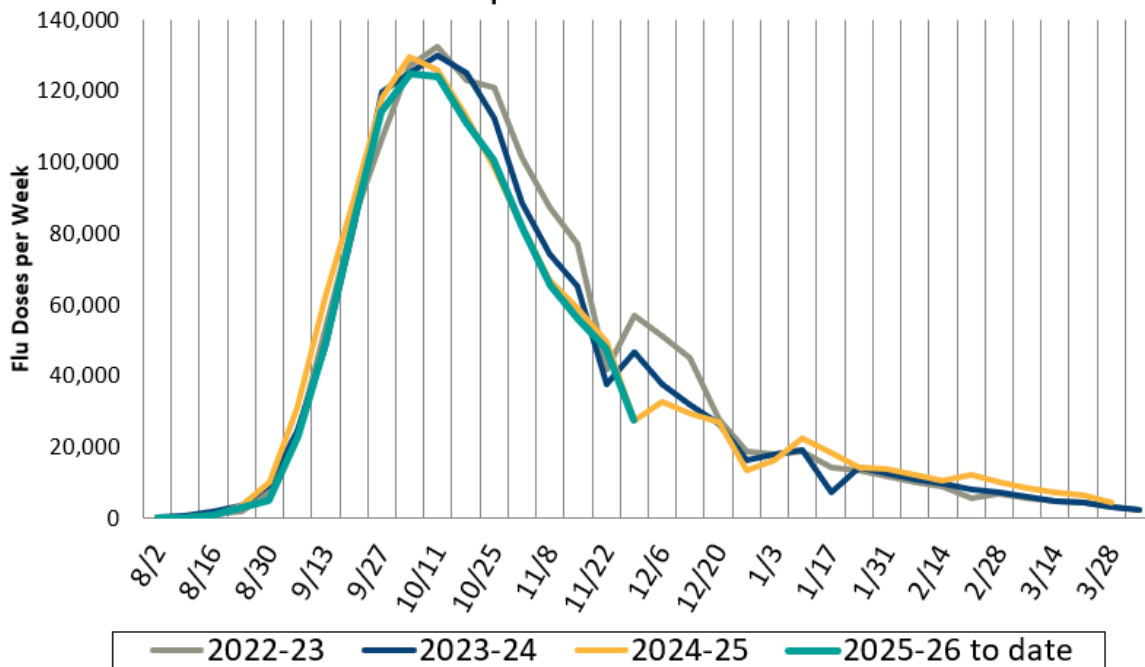
There has been 1 reported human case of highly pathogenic avian influenza (HPAI) H5N1 in Oregon. More information on avian influenza in humans is available from the [CDC](https://www.cdc.gov/). More information on avian influenza in animals is available from the [Oregon Department of Agriculture](https://www.oregon.gov/ODA/Pages/default.aspx).

Immunization Data

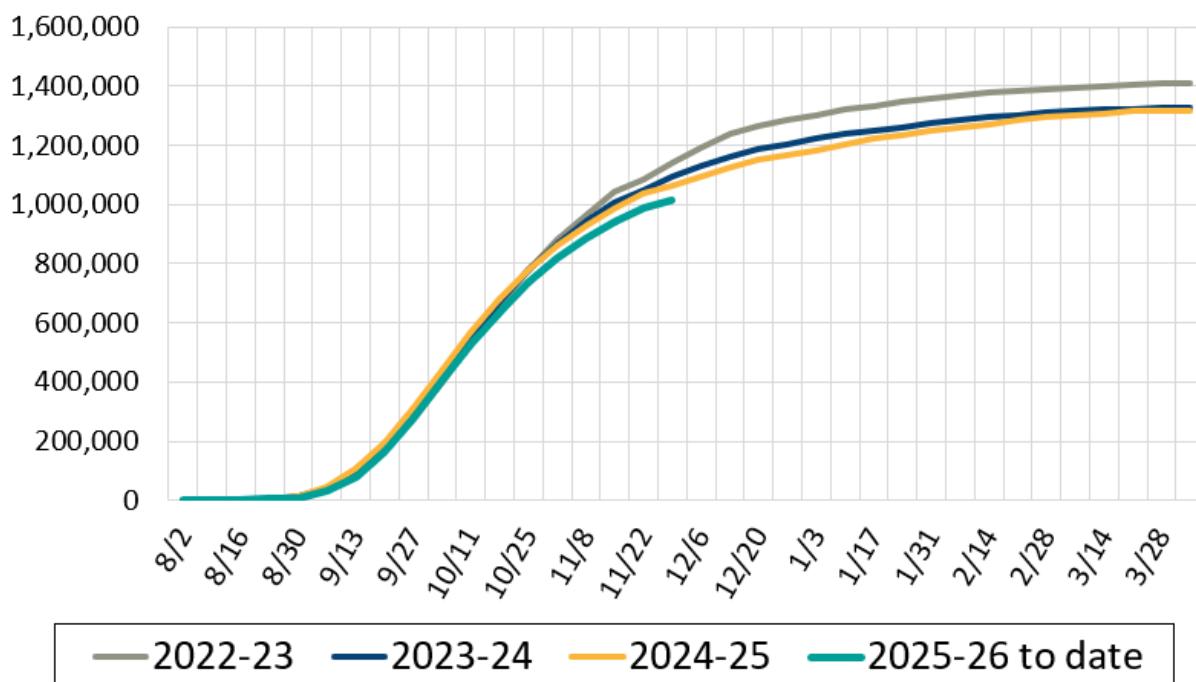
As of December 1 of 2025, influenza immunization seeking in Oregon continues to decline. This decline is consistent with immunization in past influenza seasons. Overall, the number of Oregonians seeking influenza immunizations this season is slightly lower than in the prior 2024-25 season. The week of December 1 to December 5 is also National Influenza Vaccination Week- and an opportunity to remind patients that it is not too late to get an influenza immunization to protect against upcoming disease. For more information on Oregon influenza immunizations, including county, age and race/ethnicity trends, the OHA Influenza Immunization Dashboard is available at:

<https://public.tableau.com/app/profile/oregon.immunization.program/viz/Oregon-Influenza-Vaccination/Statewide>

Weekly Oregon Influenza Immunization Totals, 2025-26 Compared to Prior 3 Seasons



Cumulative Oregon Influenza Immunizations, 2025-26 Compared to Prior 3 Seasons



FluBites

November 16, 2025- November 22, 2025

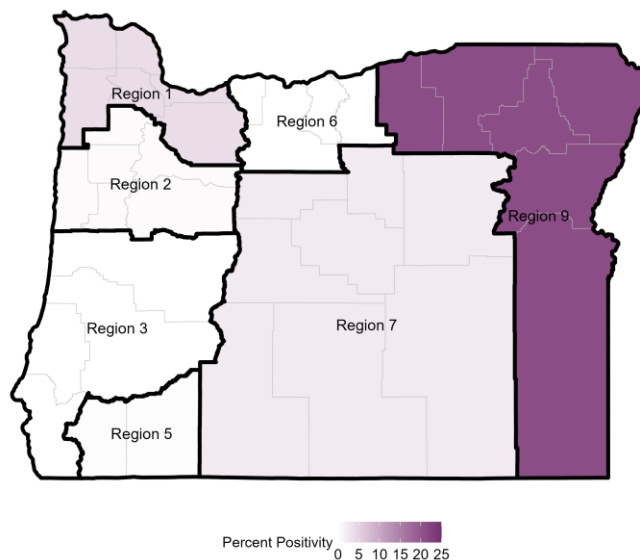
Influenza surveillance data at a glance		
	Percent Positivity ^a	Hospitalizations ^b
Current Week	4.1%	8
Previous Week	3.5%	6

^a Data from National Respiratory and Enteric Virus Surveillance System (NREVSS)

^b Hospitalization surveillance in Clackamas, Multnomah, and Washington counties only

Influenza Test Results in Oregon, NREVSS, Current Week				
Region	Influenza A	Influenza B	Total Tests	Percent Positivity
1	33 (3.8%)	1 (0.1%)	877	3.9%
2	2 (0.6%)	0 (0.0%)	361	0.6%
3	0 (0.0%)	0 (0.0%)	95	0.0%
5	1 (0.3%)	0 (0.0%)	328	0.3%
6	0 (0.0%)	0 (0.0%)	48	0.0%
7	8 (2.1%)	1 (0.3%)	379	2.4%
9	50 (21.3%)	0 (0.0%)	235	21.3%

Oregon Influenza Percent Positivity by Region

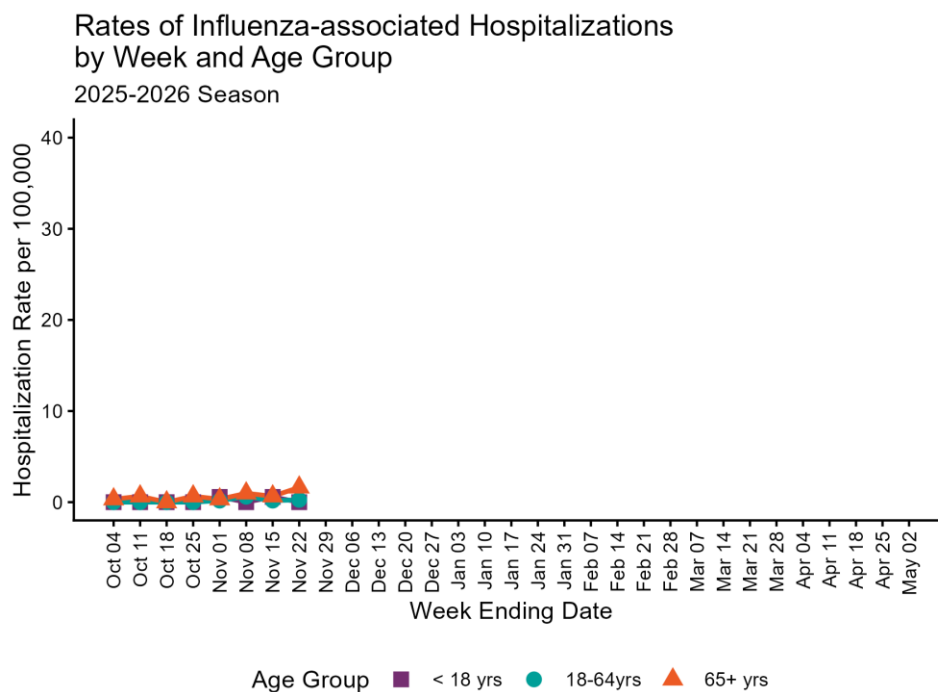


Regions with insufficient data are displayed as grey

Influenza Hospitalizations

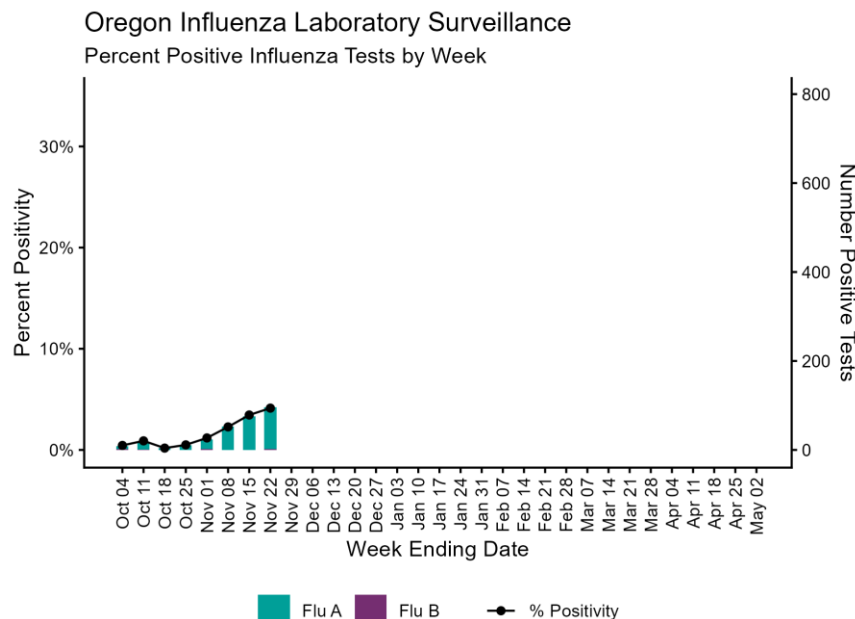
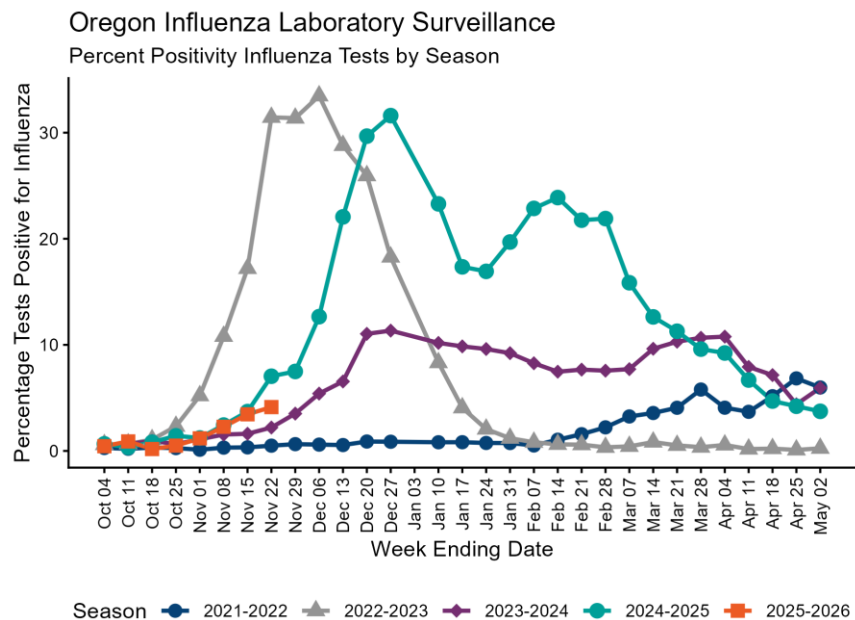
The Oregon Health Authority conducts population-based surveillance for laboratory-confirmed hospitalizations associated with influenza in Clackamas, Multnomah, and Washington counties during October 1 - April 30. To date, 34 hospitalizations have occurred during the 2025-2026 season. There were 8 hospitalizations reported during November 16, 2025 - November 22, 2025. The cumulative hospitalization rate for the 2025-2026 season is 1.9 per 100,000 people.

2025-2026 Influenza-Associated Hospitalizations		
Age Group (years)	N	Rate per 100,000 people
0-4	0	0.0
5-17	4	1.5
18-49	9	1.1
50-64	5	1.5
65+	16	5.3

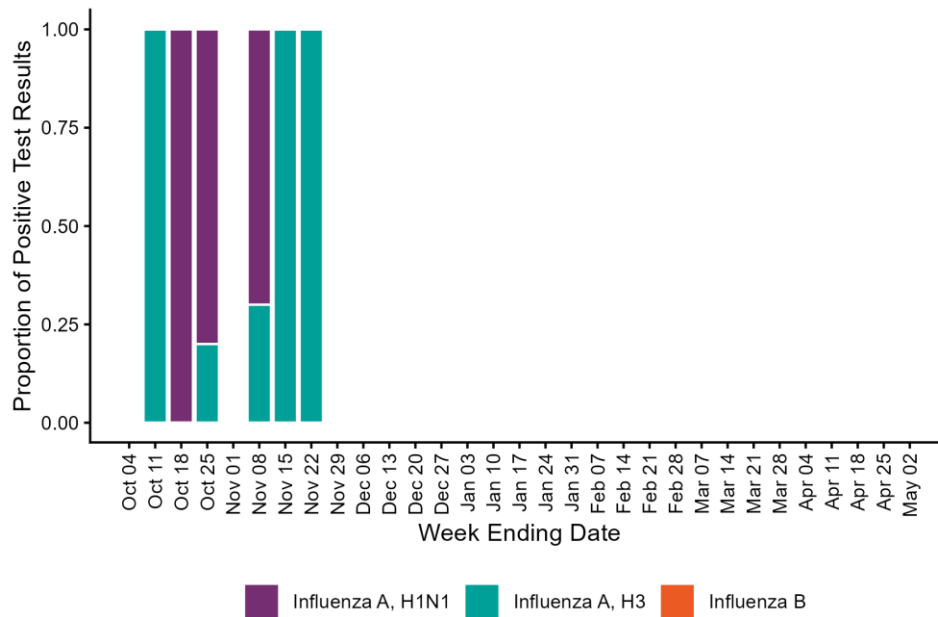


Laboratory Data

4.1% of specimens tested for influenza were positive during November 16, 2025 - November 22, 2025. 52.2% of positive influenza specimens tested at the Oregon State Public Health Laboratory (OSPHL) this season are influenza A (H1N1), 47.8% are influenza A (H3), and 0% are influenza B. National laboratory trends can be found at [CDC FluView](https://www.cdc.gov/fluview).



Oregon State Public Health Laboratory (OSPHL) Influenza Testing 2025-2026 Season



Avian Influenza

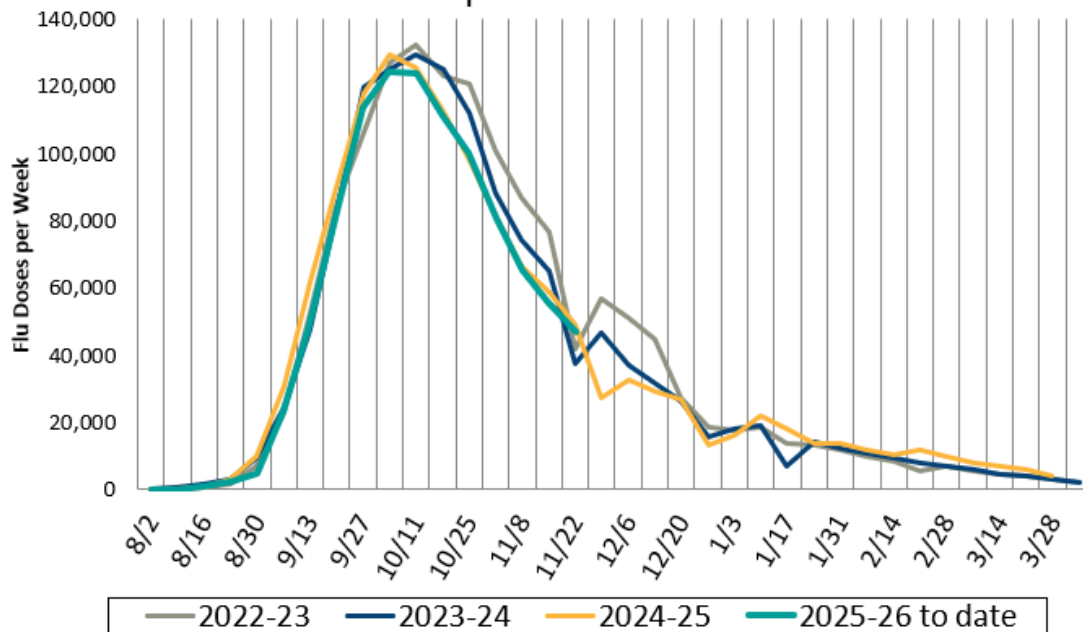
There has been 1 reported human case of highly pathogenic avian influenza (HPAI) H5N1 in Oregon. More information on avian influenza in humans is available from the [CDC](https://www.cdc.gov/). More information on avian influenza in animals is available from the [Oregon Department of Agriculture](https://www.oregon.gov/ODA/Pages/default.aspx).

Immunization Data

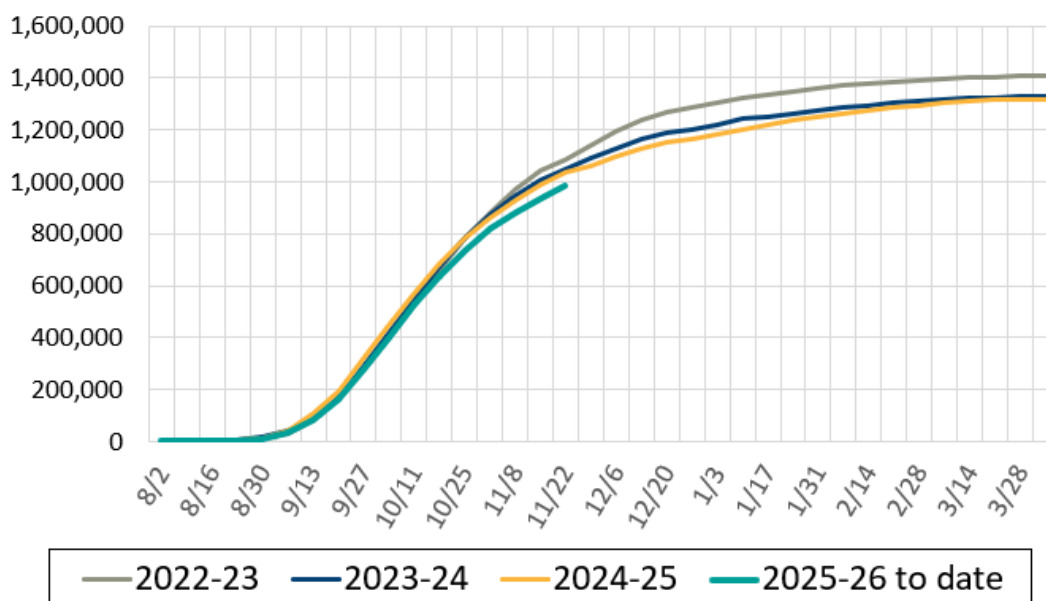
As of November 24 of 2025, influenza immunization seeking in Oregon is declining going into the Thanksgiving holiday. Overall, the number of Oregonians seeking influenza immunizations this season is slightly lower than in the prior 2024-25 season. For more information on Oregon influenza immunizations, including county, age and race/ethnicity trends, the OHA Influenza Immunization Dashboard is available at:

<https://public.tableau.com/app/profile/oregon.immunization.program/viz/Oregon-Influenza-Vaccination/Statewide>

Weekly Oregon Influenza Immunization Totals,
2025-26 Compared to Prior 3 Seasons



Cumulative Oregon Influenza Immunizations,
2025-26 Compared to Prior 3 Seasons



FluBites

November 09, 2025- November 15, 2025

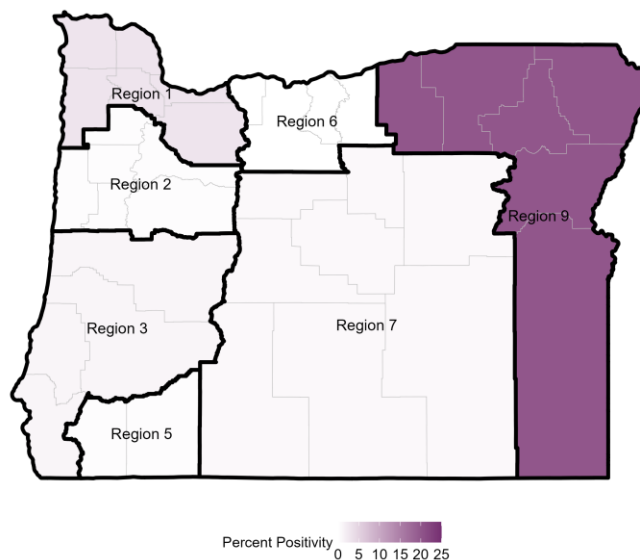
Influenza surveillance data at a glance		
	Percent Positivity ^a	Hospitalizations ^b
Current Week	3.5%	6
Previous Week	2.3%	9

^a Data from National Respiratory and Enteric Virus Surveillance System (NREVSS)

^b Hospitalization surveillance in Clackamas, Multnomah, and Washington counties only

Influenza Test Results in Oregon, NREVSS, Current Week				
Region	Influenza A	Influenza B	Total Tests	Percent Positivity
1	22 (3.1%)	0 (0.0%)	702	3.1%
2	1 (0.3%)	0 (0.0%)	313	0.3%
3	1 (1.1%)	0 (0.0%)	95	1.1%
5	1 (0.3%)	0 (0.0%)	332	0.3%
6	0 (0.0%)	0 (0.0%)	55	0.0%
7	3 (0.8%)	0 (0.0%)	376	0.8%
9	45 (20.1%)	0 (0.0%)	224	20.1%

Oregon Influenza Percent Positivity by Region

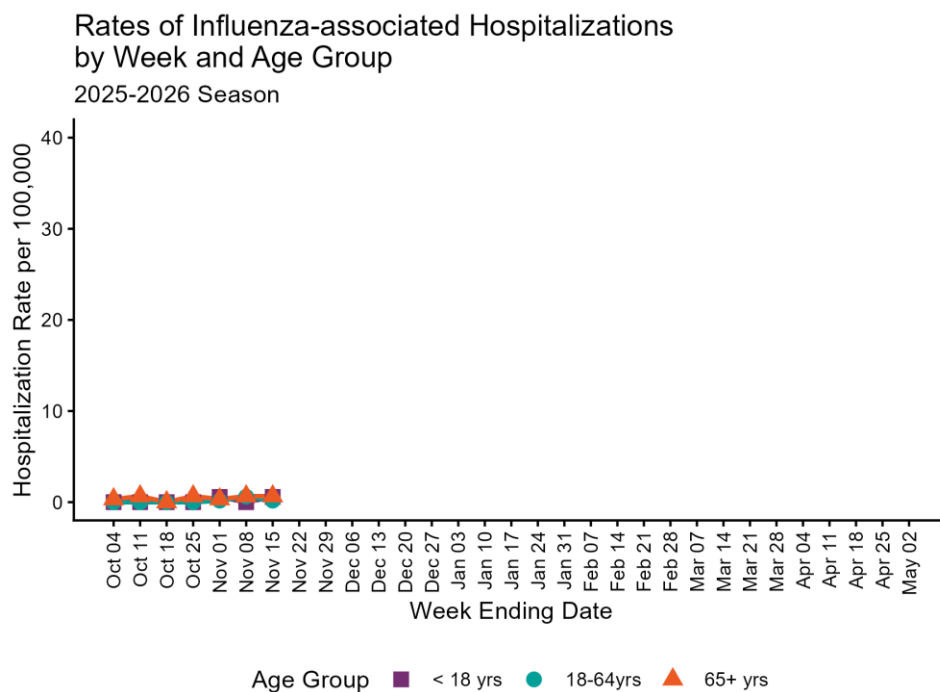


Regions with insufficient data are displayed as grey

Influenza Hospitalizations

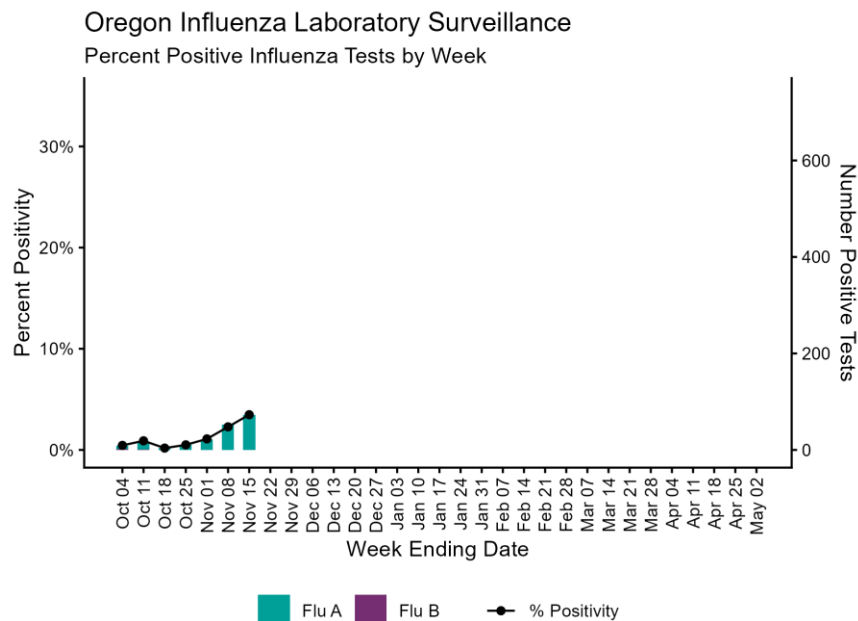
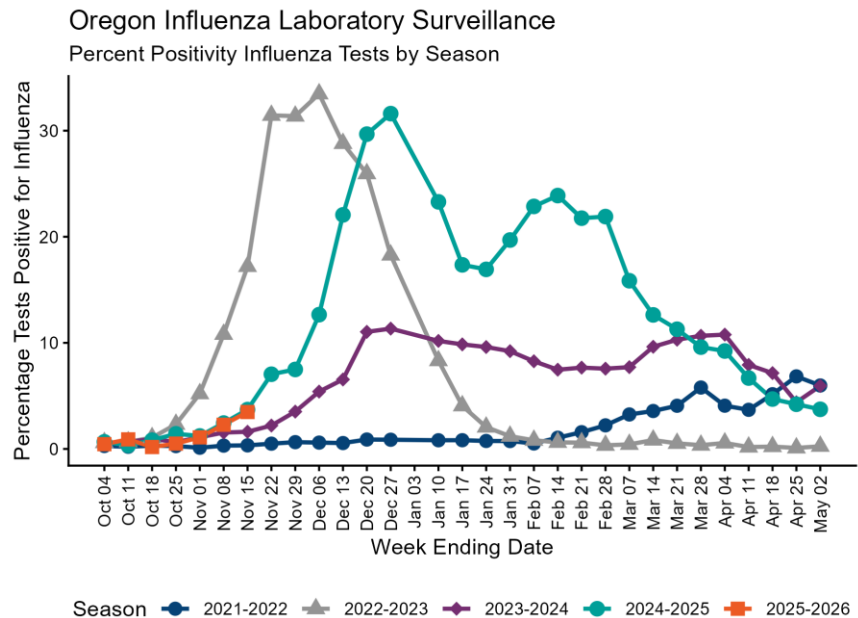
The Oregon Health Authority conducts population-based surveillance for laboratory-confirmed hospitalizations associated with influenza in Clackamas, Multnomah, and Washington counties during October 1 - April 30. To date, 25 hospitalizations have occurred during the 2025-2026 season. There were 6 hospitalizations reported during November 09, 2025 - November 15, 2025. The cumulative hospitalization rate for the 2025-2026 season is 1.4 per 100,000 people.

2025-2026 Influenza-Associated Hospitalizations		
Age Group (years)	N	Rate per 100,000 people
0-4	0	0.0
5-17	4	1.5
18-49	7	0.8
50-64	4	1.2
65+	10	3.3

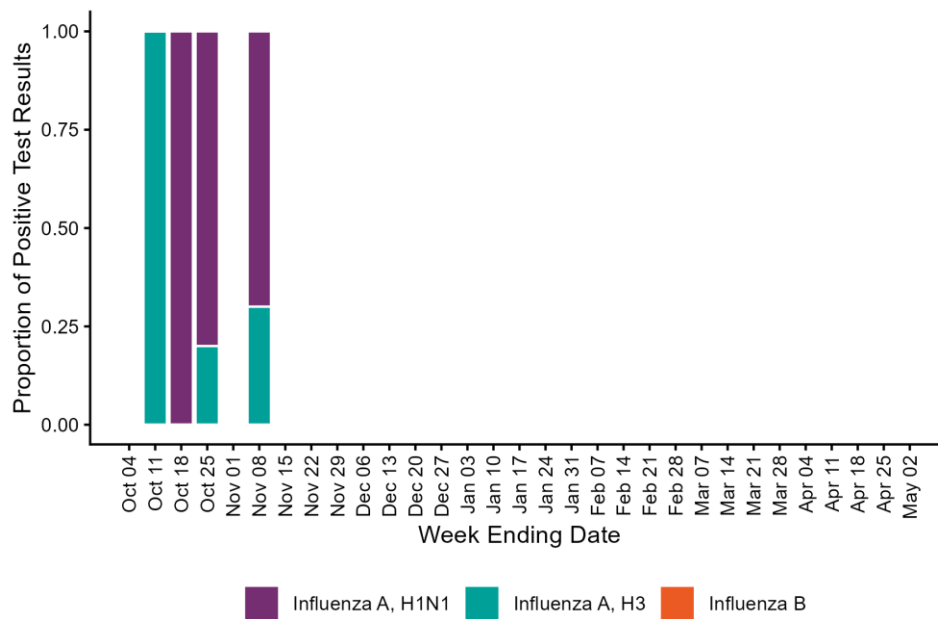


Laboratory Data

3.5% of specimens tested for influenza were positive during November 09, 2025 - November 15, 2025. 63.2% of positive influenza specimens tested at the Oregon State Public Health Laboratory (OSPHL) this season are influenza A (H1N1), 36.8% are influenza A (H3), and 0% are influenza B. National laboratory trends can be found at [CDC FluView](https://www.cdc.gov/fluview/).



Oregon State Public Health Laboratory (OSPHL) Influenza Testing 2025-2026 Season



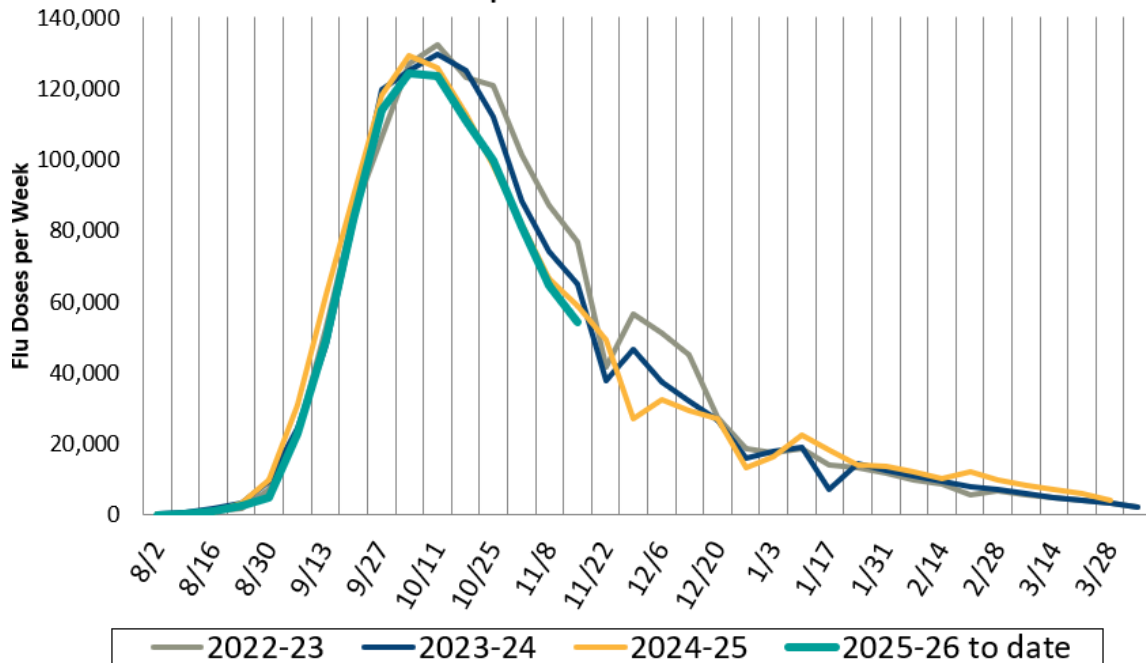
Avian Influenza

There has been 1 reported human case of highly pathogenic avian influenza (HPAI) H5N1 in Oregon. More information on avian influenza in humans is available from the [CDC](https://www.cdc.gov/). More information on avian influenza in animals is available from the [Oregon Department of Agriculture](https://www.oregon.gov/ODA/Pages/default.aspx).

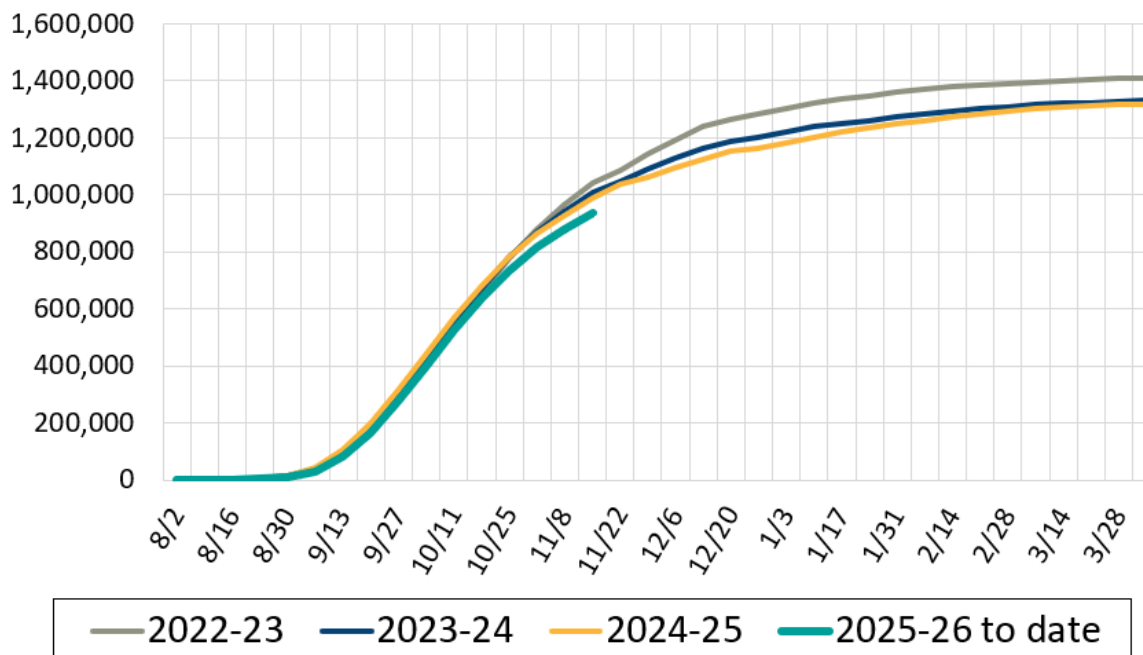
Immunization Data

As of November 17 of 2025, influenza immunization seeking in Oregon is declining going into the Thanksgiving holiday. Overall, the number of Oregonians seeking influenza immunizations this season is slightly lower than last season at this time. Declines in immunization totals for this season are in part related to a slow start to pharmacy influenza immunization seeking. A fact for this week: 78% of Oregon adults with an influenza immunization this season also had an influenza immunization last season. Consistent and repeated influenza shot seeking across seasons increases with age, as shown in this week's extra chart. For more information on Oregon influenza immunizations, including county, age and race/ethnicity trends, the OHA Influenza Immunization Dashboard is available at: https://public.tableau.com/app/profile/oregon.immunization.program/viz/Oregon_Influenza_Vaccination/Statewide

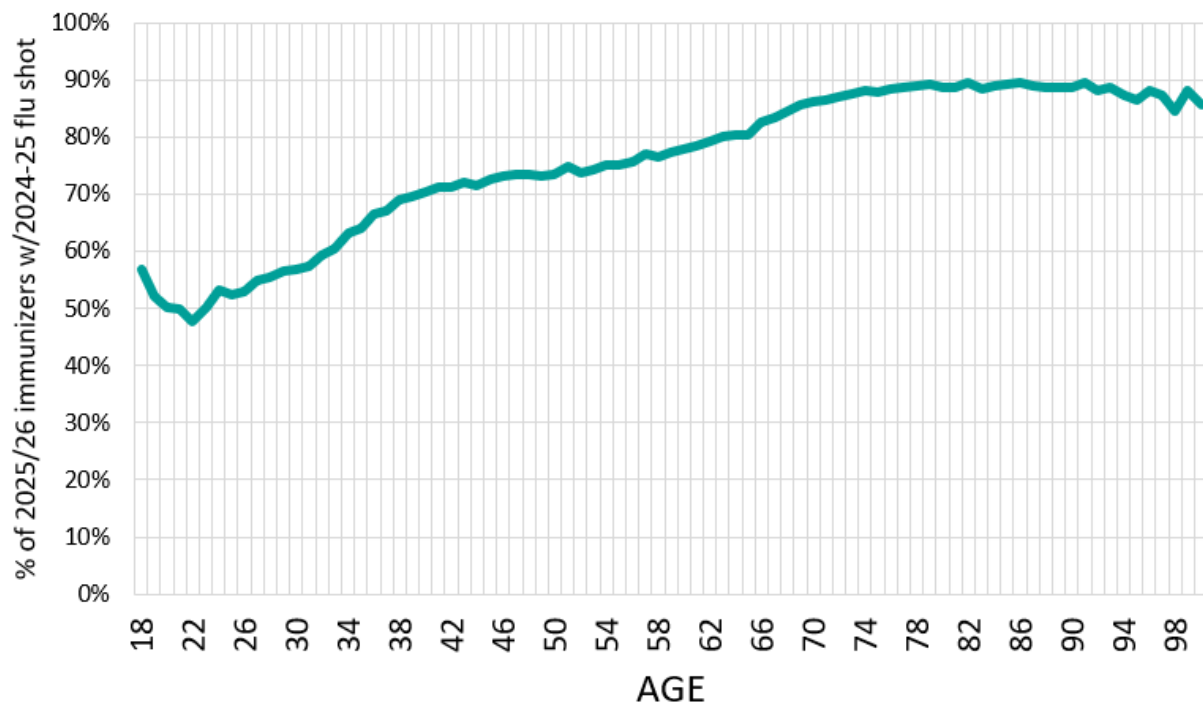
Weekly Oregon Influenza Immunization Totals, 2025-26 Compared to Prior 3 Seasons



Cumulative Oregon Influenza Immunizations, 2025-26 Compared to Prior 3 Seasons



Repeat Adult Influenza Immunizers by Age



FluBites

November 02, 2025 - November 08, 2025

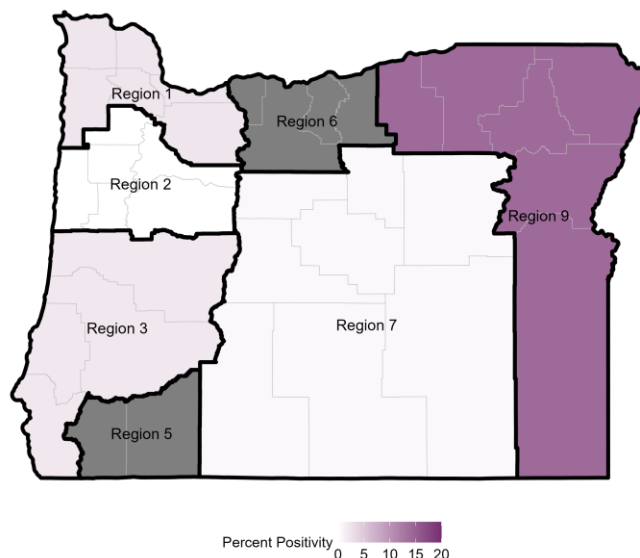
Influenza surveillance data at a glance		
	Percent Positivity ^a	Hospitalizations ^b
Current Week	2.7%	9
Previous Week	1.1%	5

^a Data from National Respiratory and Enteric Virus Surveillance System (NREVSS)

^b Hospitalization surveillance in Clackamas, Multnomah, and Washington counties only

Influenza Test Results in Oregon, NREVSS, Current Week				
Region	Influenza A	Influenza B	Total Tests	Percent Positivity
1	16 (2.4%)	0 (0.0%)	678	2.4%
2	0 (0.0%)	0 (0.0%)	403	0.0%
3	4 (2.2%)	0 (0.0%)	181	2.2%
5	0 (0.0%)	0 (0.0%)	0	0.0%
6	0 (0.0%)	0 (0.0%)	0	0.0%
7	2 (0.6%)	0 (0.0%)	322	0.6%
9	26 (14.1%)	0 (0.0%)	184	14.1%

Oregon Influenza Percent Positivity by Region

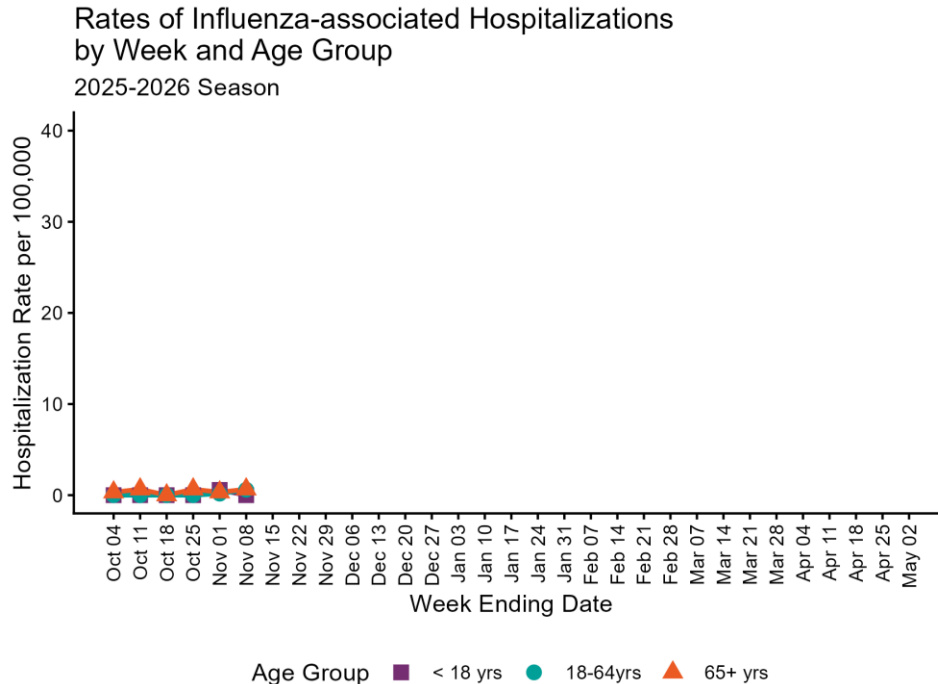


Regions with insufficient data are displayed as grey

Influenza Hospitalizations

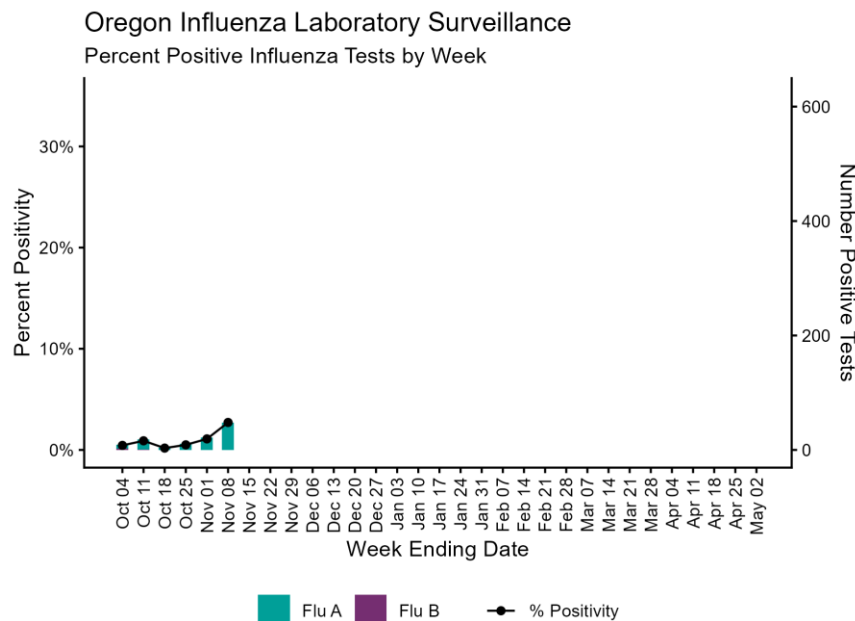
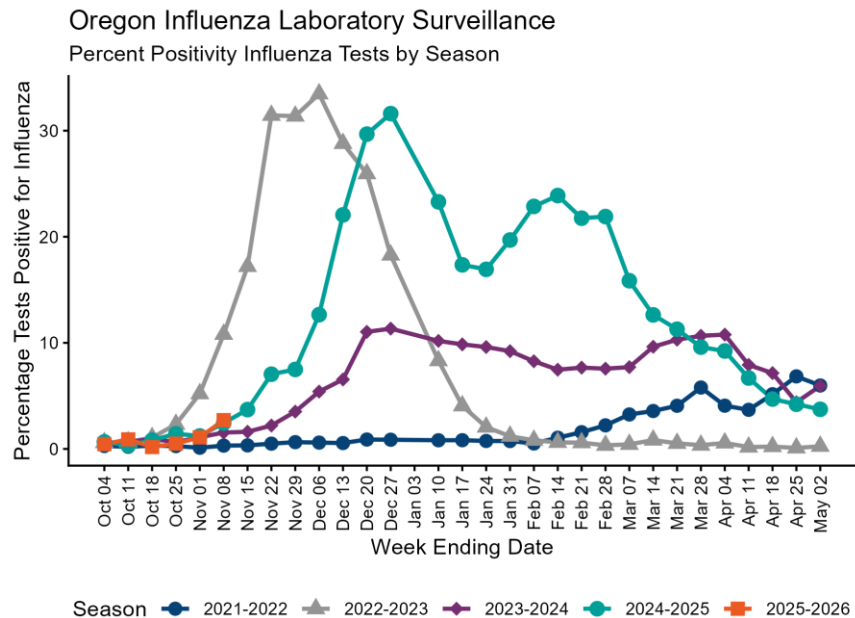
The Oregon Health Authority conducts population-based surveillance for laboratory-confirmed hospitalizations associated with influenza in Clackamas, Multnomah, and Washington counties during October 1 - April 30. To date, 19 hospitalizations have occurred during the 2025-2026 season. There were 9 hospitalizations reported during November 02, 2025 - November 08, 2025. The cumulative hospitalization rate for the 2025-2026 season is 1 per 100,000 people.

2025-2026 Influenza-Associated Hospitalizations		
Age Group (years)	N	Rate per 100,000 people
0-4	0	0.0
5-17	2	0.8
18-49	5	0.6
50-64	4	1.2
65+	8	2.7

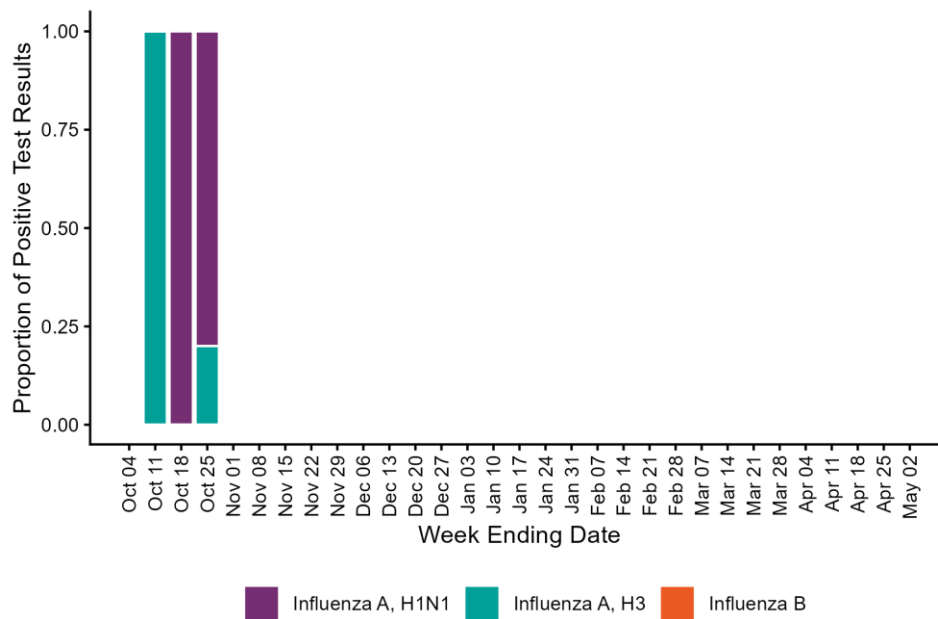


Laboratory Data

2.7% of specimens tested for influenza were positive during November 02, 2025 - November 08, 2025. 55.6% of positive influenza specimens tested at the Oregon State Public Health Laboratory (OSPHL) this season are influenza A (H1N1), 44.4% are influenza A (H3), and 0% are influenza B. National laboratory trends can be found at [CDC FluView](https://www.cdc.gov/fluview/).



Oregon State Public Health Laboratory (OSPHL) Influenza Testing 2025-2026 Season



Avian Influenza

There has been 1 reported human case of highly pathogenic avian influenza (HPAI) H5N1 in Oregon. More information on avian influenza in humans is available from the [CDC](https://www.cdc.gov/). More information on avian influenza in animals is available from the [Oregon Department of Agriculture](https://www.oregon.gov/ODA/Pages/default.aspx).

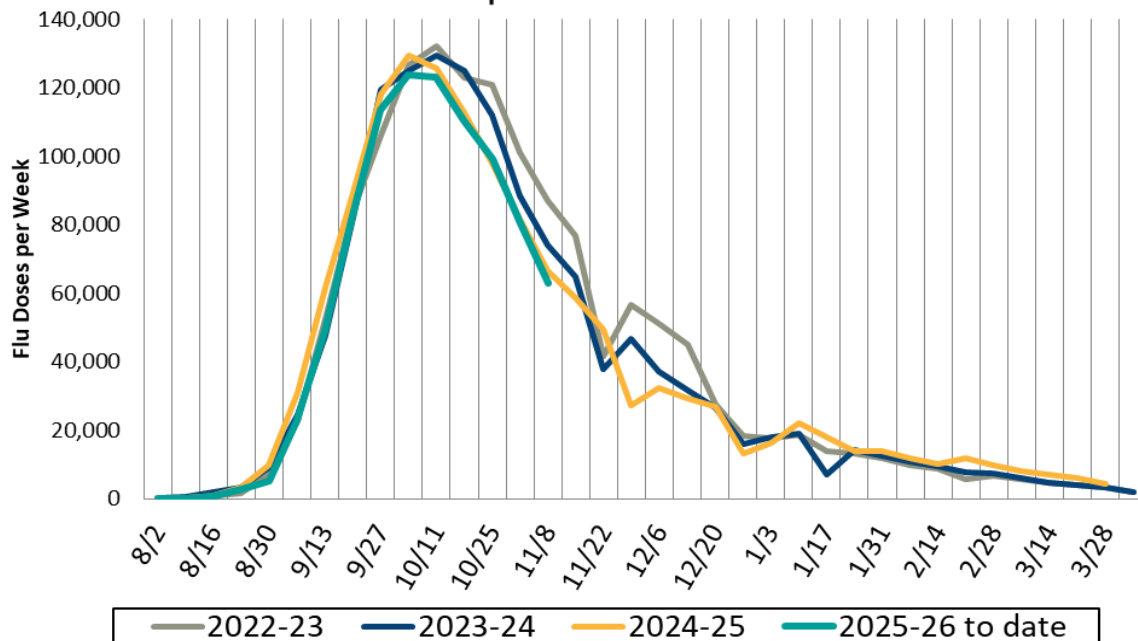
Immunization Data

As of November 10th of 2025, influenza immunization seeking in Oregon has already peaked and started declining. Overall, the number of Oregonians seeking influenza immunizations this season is slightly lower than last season at this time. Declines in immunization totals for this season are in part related to a slow start to pharmacy influenza immunization seeking.

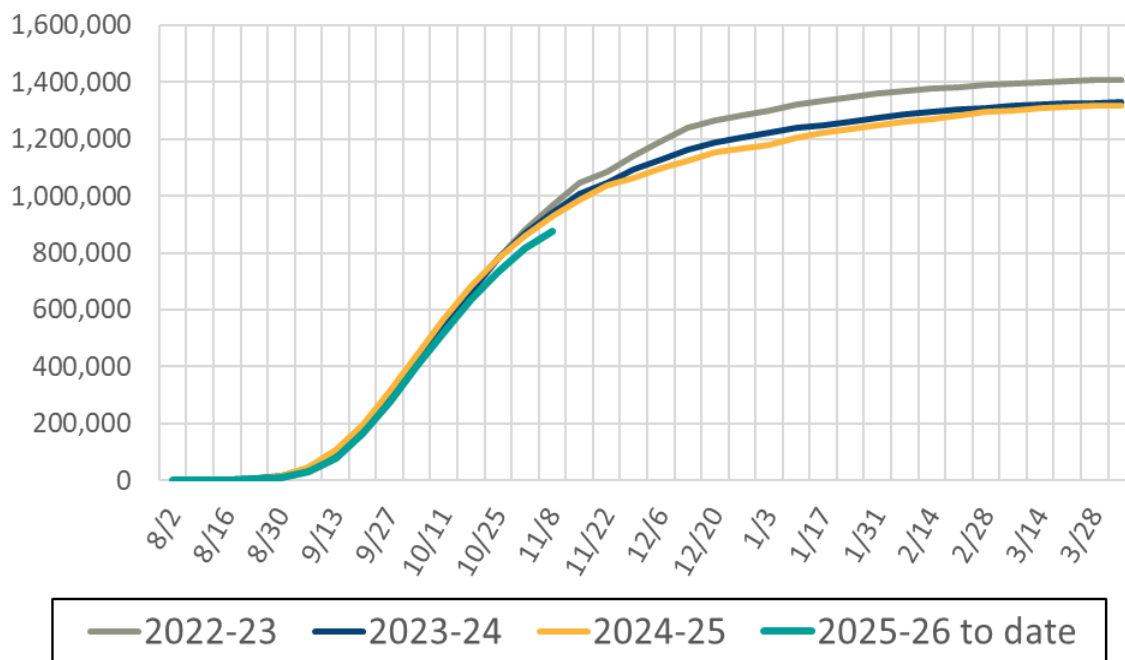
For more information on Oregon influenza immunizations, including county, age and race/ethnicity trends, the OHA Influenza Immunization Dashboard is available at:

https://public.tableau.com/app/profile/oregon.immunization.program/viz/Oregon_Influenza_Vaccination/Statewide

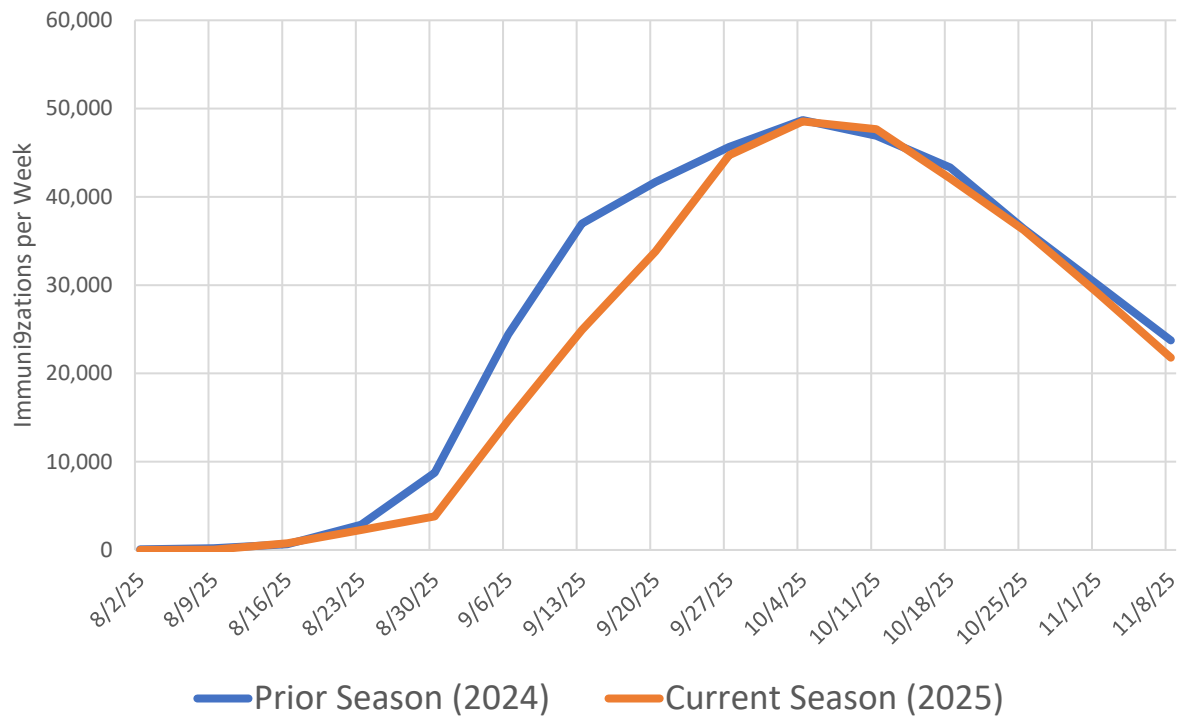
Weekly Oregon Influenza Immunization Totals, 2025-26 Compared to Prior 3 Seasons



Cumulative Oregon Influenza Immunizations, 2025-26 Compared to Prior 3 Seasons



Pharmacy Influenza Immunizations by Week Compared to Last Season



FluBites

October 26, 2025- November 01, 2025

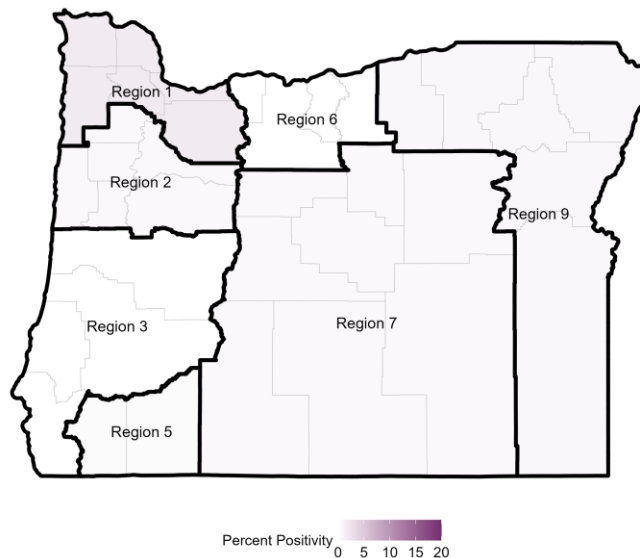
Influenza surveillance data at a glance		
	Percent Positivity ^a	Hospitalizations ^b
Current Week	0.9%	0
Previous Week	0.5%	2

^a Data from National Respiratory and Enteric Virus Surveillance System (NREVSS)

^b Hospitalization surveillance in Clackamas, Multnomah, and Washington counties only

Influenza Test Results in Oregon, NREVSS, Current Week				
Region	Influenza A	Influenza B	Total Tests	Percent Positivity
1	9 (1.9%)	0 (0.0%)	469	1.9%
2	2 (0.6%)	0 (0.0%)	343	0.6%
3	0 (0.0%)	0 (0.0%)	82	0.0%
5	1 (0.4%)	0 (0.0%)	285	0.4%
6	0 (0.0%)	0 (0.0%)	42	0.0%
7	2 (0.6%)	0 (0.0%)	315	0.6%
9	1 (0.7%)	0 (0.0%)	135	0.7%

Oregon Influenza Percent Positivity by Region

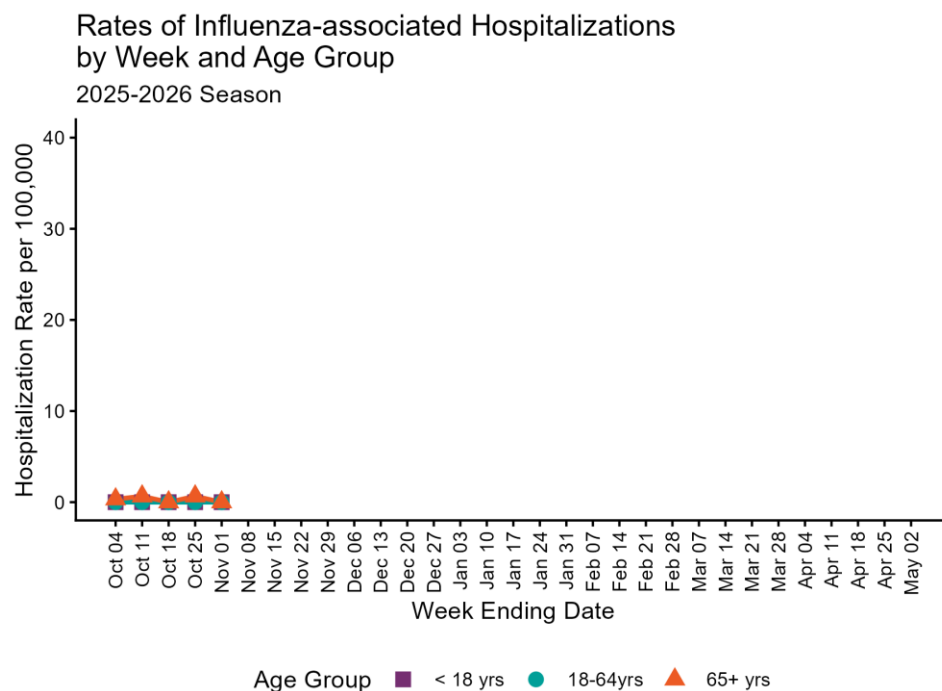


Regions with insufficient data are displayed as grey

Influenza Hospitalizations

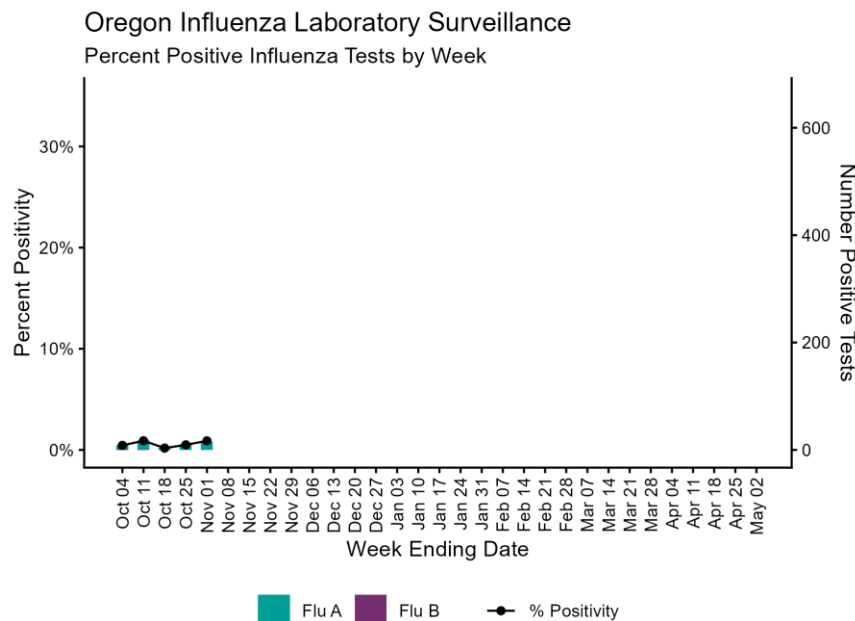
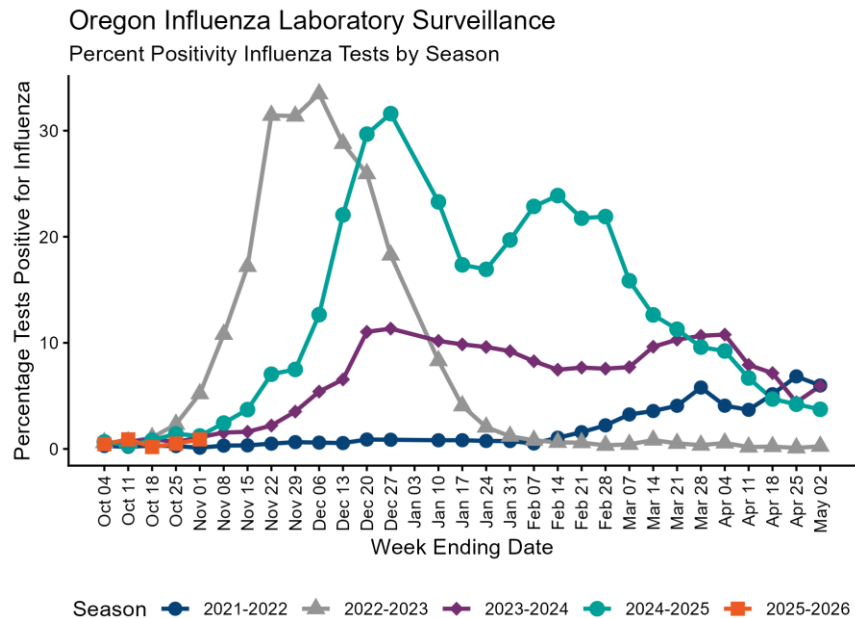
The Oregon Health Authority conducts population-based surveillance for laboratory-confirmed hospitalizations associated with influenza in Clackamas, Multnomah, and Washington counties during October 1 - April 30. To date, 5 hospitalizations have occurred during the 2025-2026 season. There were 0 hospitalizations reported during October 26, 2025 - November 01, 2025. The cumulative hospitalization rate for the 2025-2026 season is 0.3 per 100,000 people.

2025-2026 Influenza-Associated Hospitalizations		
Age Group (years)	N	Rate per 100,000 people
0-4	0	0.0
5-17	0	0.0
18-49	0	0.0
50-64	0	0.0
65+	5	1.7

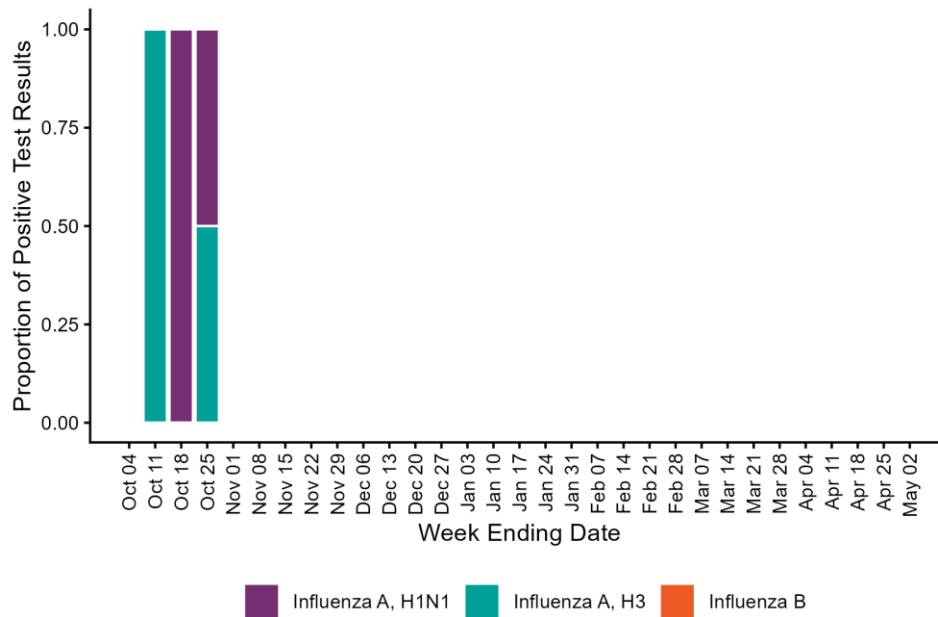


Laboratory Data

0.9% of specimens tested for influenza were positive during October 26, 2025 - November 01, 2025. 33.3% of positive influenza specimens tested at the Oregon State Public Health Laboratory (OSPHL) this season are influenza A (H1N1), 66.7% are influenza A (H3), and 0% are influenza B. National laboratory trends can be found at [CDC FluView](https://www.cdc.gov/fluview/).



Oregon State Public Health Laboratory (OSPHL) Influenza Testing 2025-2026 Season



Avian Influenza

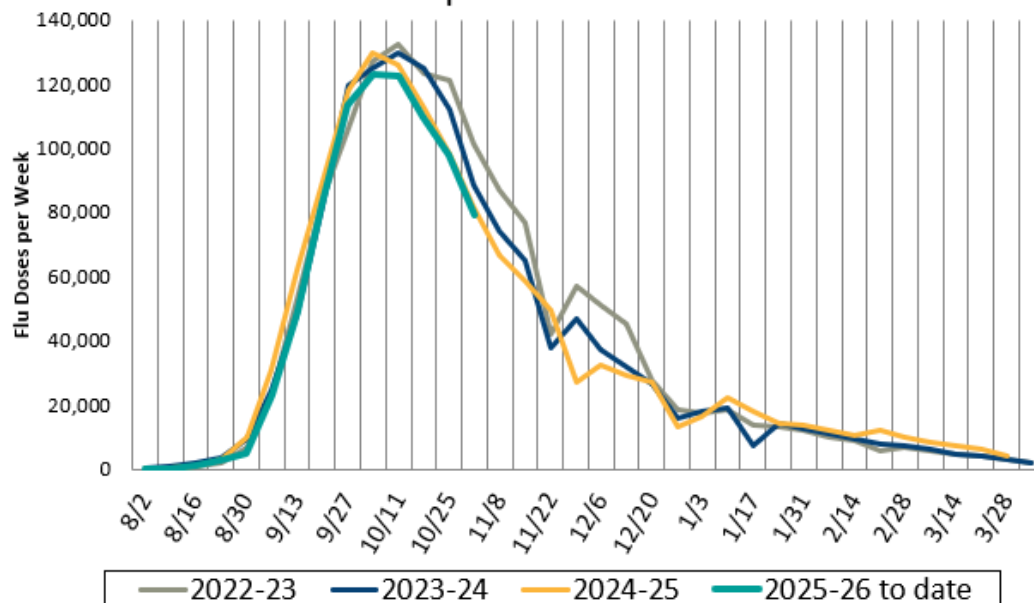
There has been 1 reported human case of highly pathogenic avian influenza (HPAI) H5N1 in Oregon. More information on avian influenza in humans is available from the [CDC](https://www.cdc.gov/). More information on avian influenza in animals is available from the [Oregon Department of Agriculture](https://www.oregon.gov/ODA/Pages/default.aspx).

Immunization Data

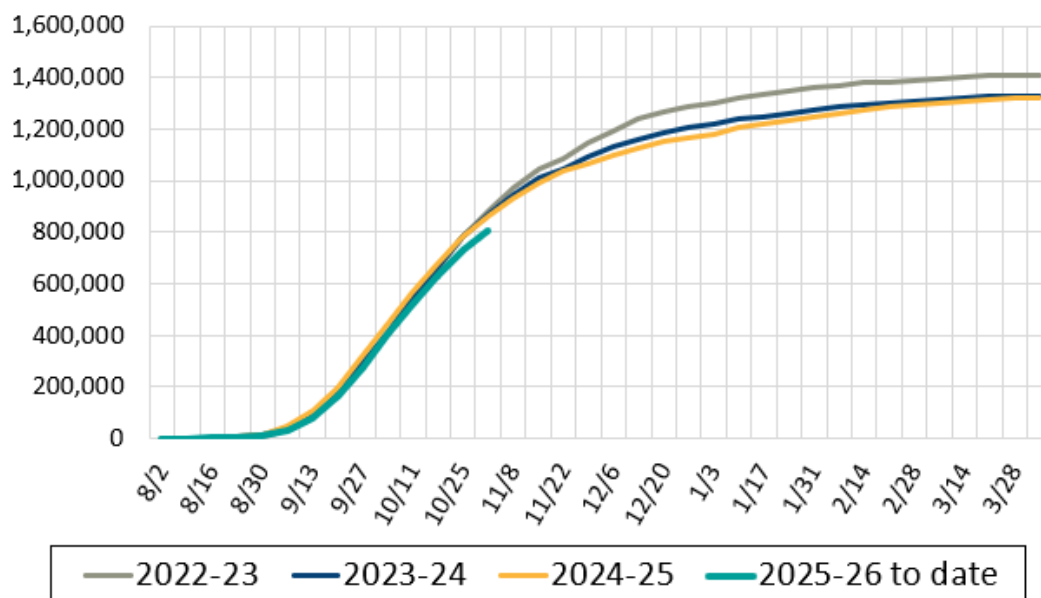
As of November 3rd of 2025, influenza immunization seeking in Oregon has already peaked and started declining. Overall, the number of Oregonians seeking influenza immunizations this season is slightly lower than last season at this time. For more information on Oregon influenza immunizations, including county, age and race/ethnicity trends, the OHA Influenza Immunization Dashboard is available at:

<https://public.tableau.com/app/profile/oregon.immunization.program/viz/Oregon-Influenza-Vaccination/Statewide>

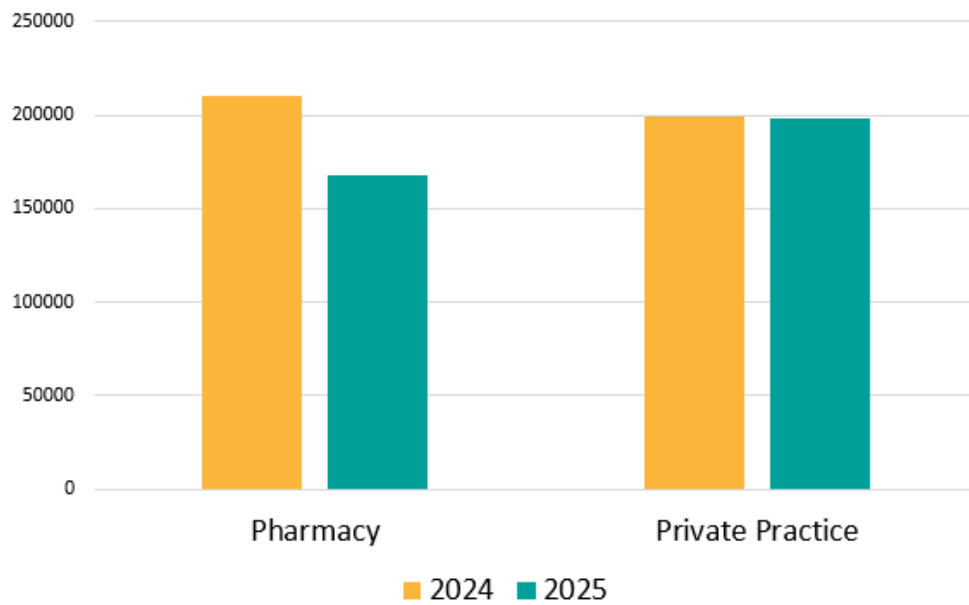
Weekly Oregon Influenza Immunization Totals, 2025-26 Compared to Prior 3 Seasons



Cumulative Oregon Influenza Immunizations, 2025-26 Compared to Prior 3 Seasons



Oregon Influenza Immunizations as of Oct 7th, 2025 by Provider Type



FluBites

October 19, 2025- October 25, 2025

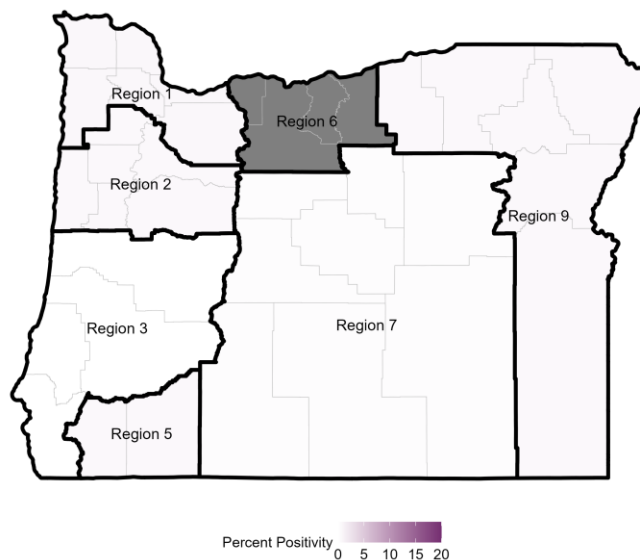
Influenza surveillance data at a glance		
	Percent Positivity ^a	Hospitalizations ^b
Current Week	0.5%	1
Previous Week	0.1%	0

^a Data from National Respiratory and Enteric Virus Surveillance System (NREVSS)

^b Hospitalization surveillance in Clackamas, Multnomah, and Washington counties only

Influenza Test Results in Oregon, NREVSS, Current Week				
Region	Influenza A	Influenza B	Total Tests	Percent Positivity
1	5 (0.7%)	0 (0.0%)	696	0.7%
2	2 (0.6%)	0 (0.0%)	347	0.6%
3	0 (0.0%)	0 (0.0%)	152	0.0%
5	2 (0.6%)	0 (0.0%)	324	0.6%
6	0 (0.0%)	0 (0.0%)	0	0.0%
7	1 (0.3%)	0 (0.0%)	365	0.3%
9	1 (0.6%)	0 (0.0%)	163	0.6%

Oregon Influenza Percent Positivity by Region

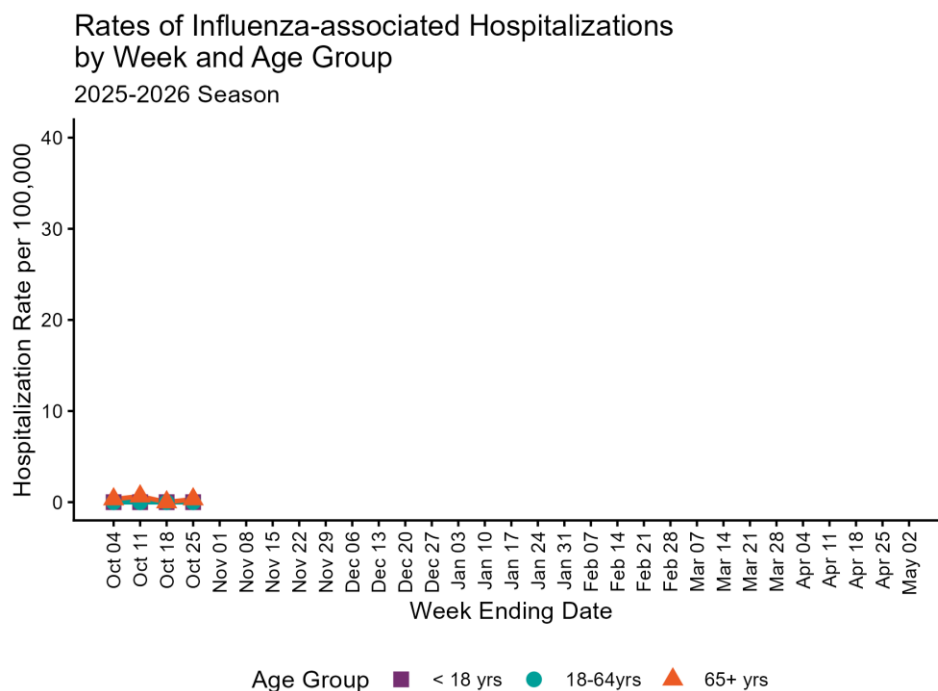


Regions with insufficient data are displayed as grey

Influenza Hospitalizations

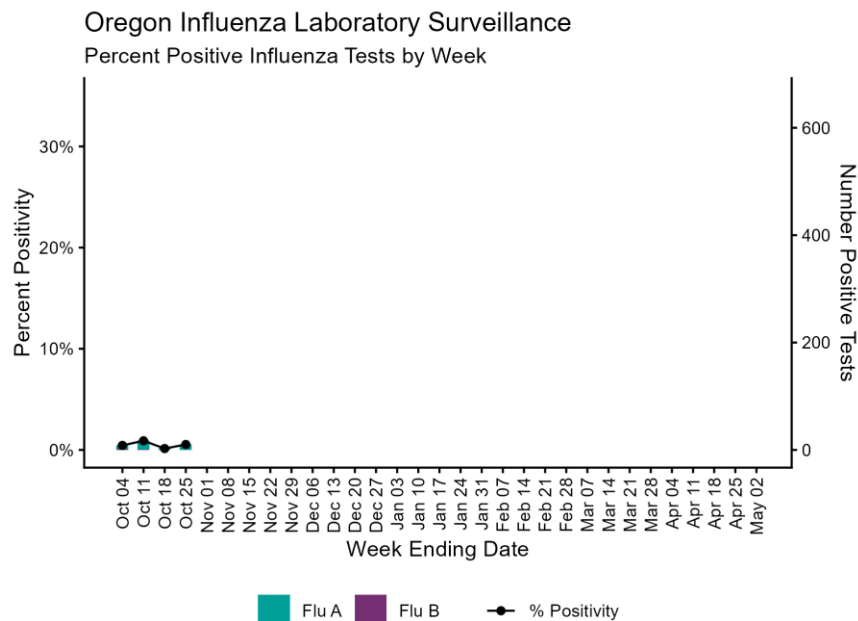
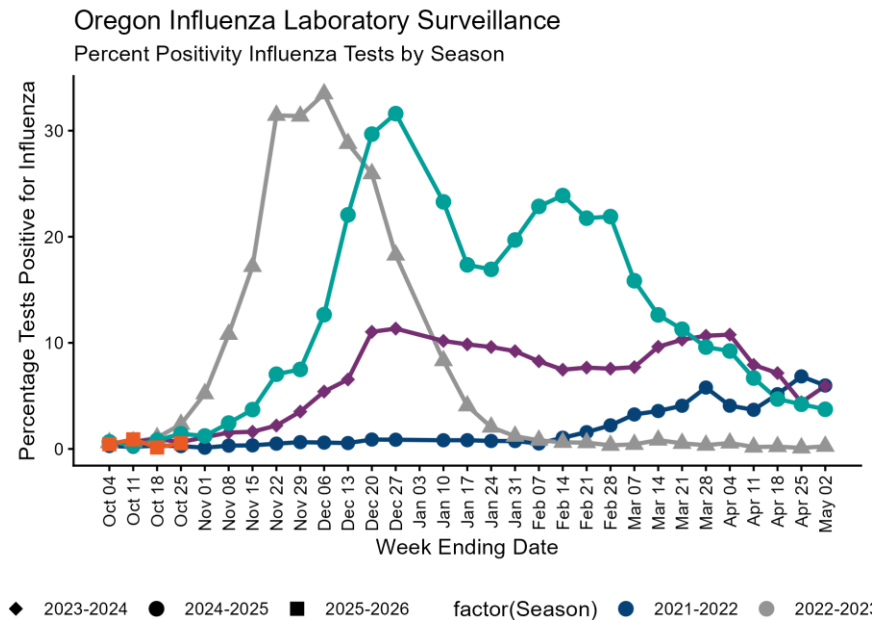
The Oregon Health Authority conducts population-based surveillance for laboratory-confirmed hospitalizations associated with influenza in Clackamas, Multnomah, and Washington counties during October 1 - April 30. To date, 4 hospitalizations have occurred during the 2025-2026 season. There was 1 hospitalization reported during October 19, 2025 - October 25, 2025. The cumulative hospitalization rate for the 2025-2026 season is 0.2 per 100,000 people.

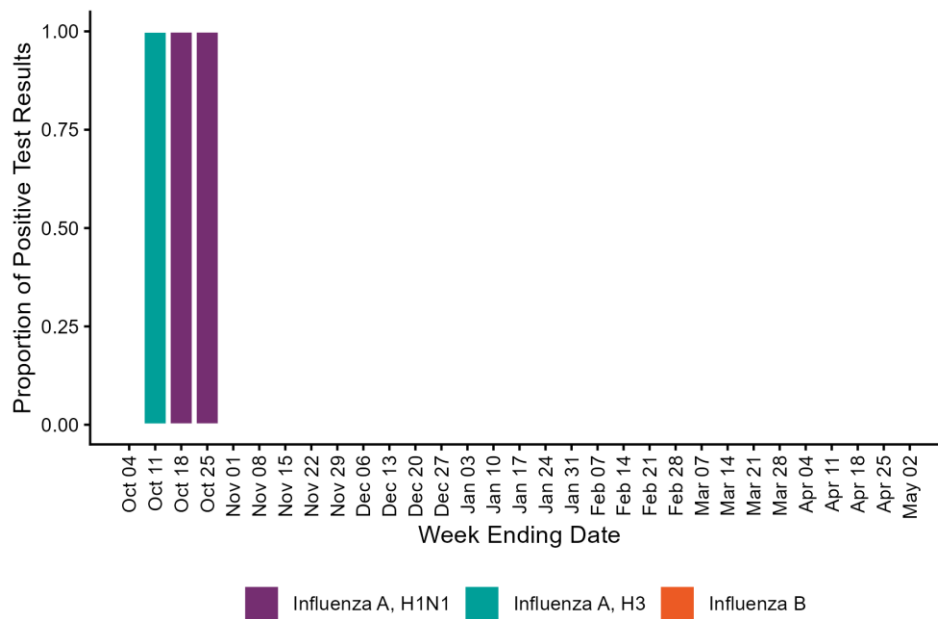
2025-2026 Influenza-Associated Hospitalizations		
Age Group (years)	N	Rate per 100,000 people
0-4	0	0.0
5-17	0	0.0
18-49	0	0.0
50-64	0	0.0
65+	4	1.3



Laboratory Data

0.5% of specimens tested for influenza were positive during October 19, 2025 - October 25, 2025. 0% of positive influenza specimens tested at the Oregon State Public Health Laboratory (OSPHL) this season are influenza A (H1N1), 100% are influenza A (H3), and 0% are influenza B. National laboratory trends can be found at [CDC FluView](https://www.cdc.gov/fluview/).



Oregon State Public Health Laboratory (OSPHL) Influenza Testing
2025-2026 Season

Avian Influenza

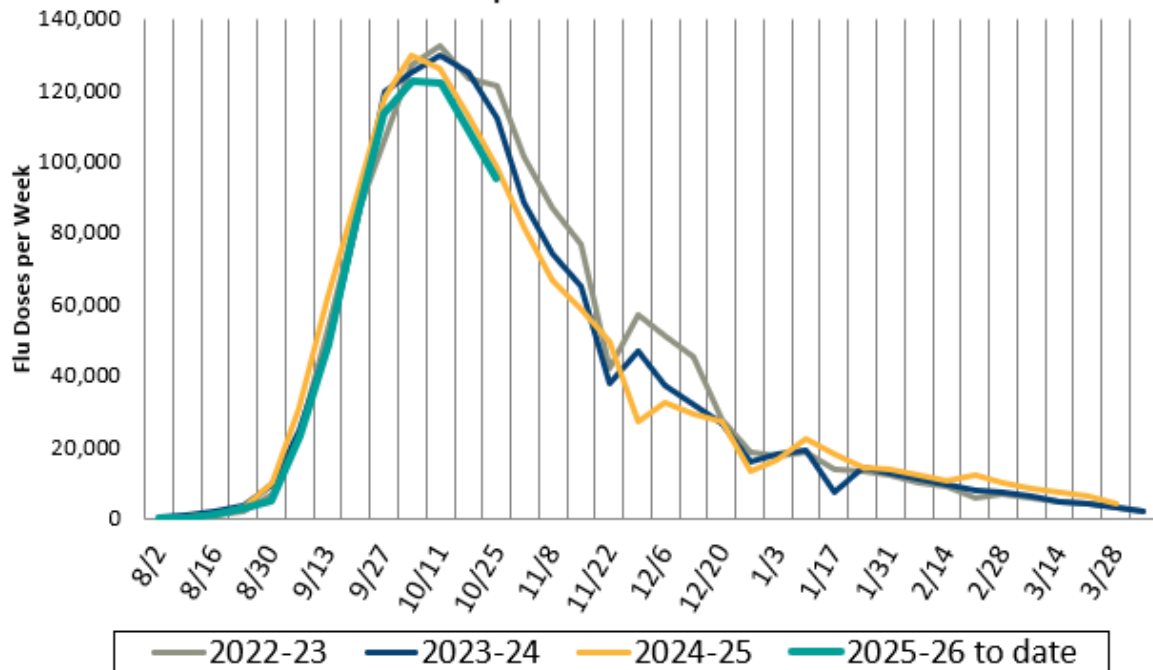
There has been 1 reported human case of highly pathogenic avian influenza (HPAI) H5N1 in Oregon. More information on avian influenza in humans is available from the [CDC](#). More information on avian influenza in animals is available from the [Oregon Department of Agriculture](#).

Immunization Data

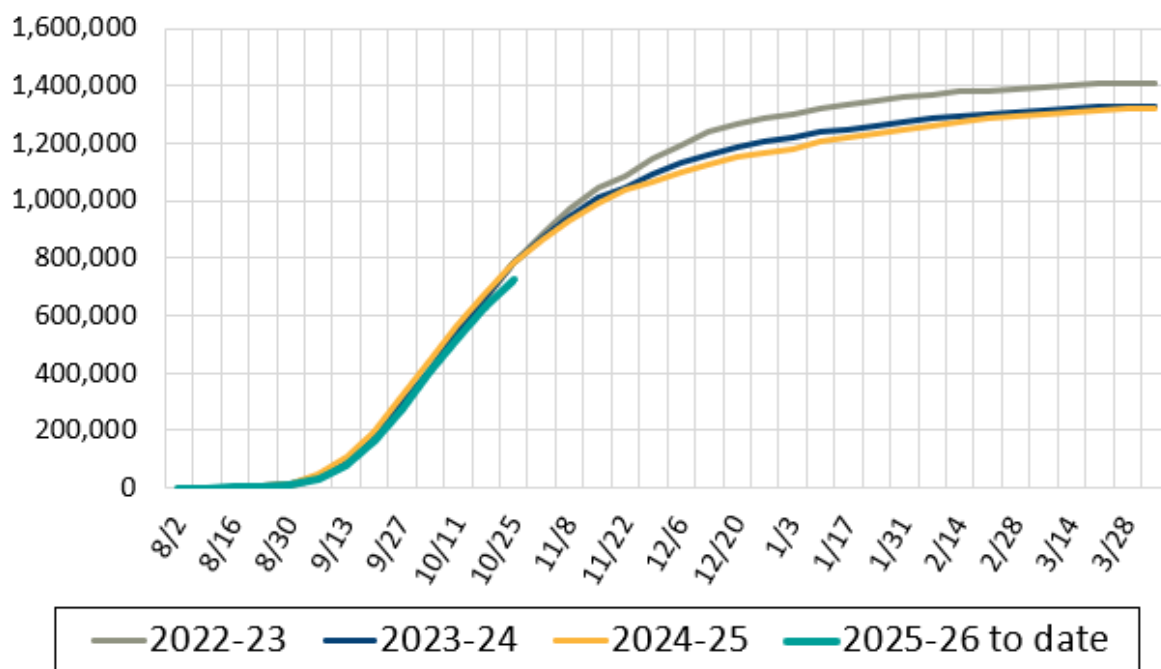
As of October 27, 2025 influenza immunization seeking in Oregon has already peaked and started declining. Overall, the number of Oregonians seeking influenza immunizations this season is slightly lower than last season at this time. For more information on Oregon influenza immunizations, including county, age and race/ethnicity trends, the OHA Influenza Immunization Dashboard is available at:

<https://public.tableau.com/app/profile/oregon.immunization.program/viz/Oregon-Influenza-Vaccination/Statewide>

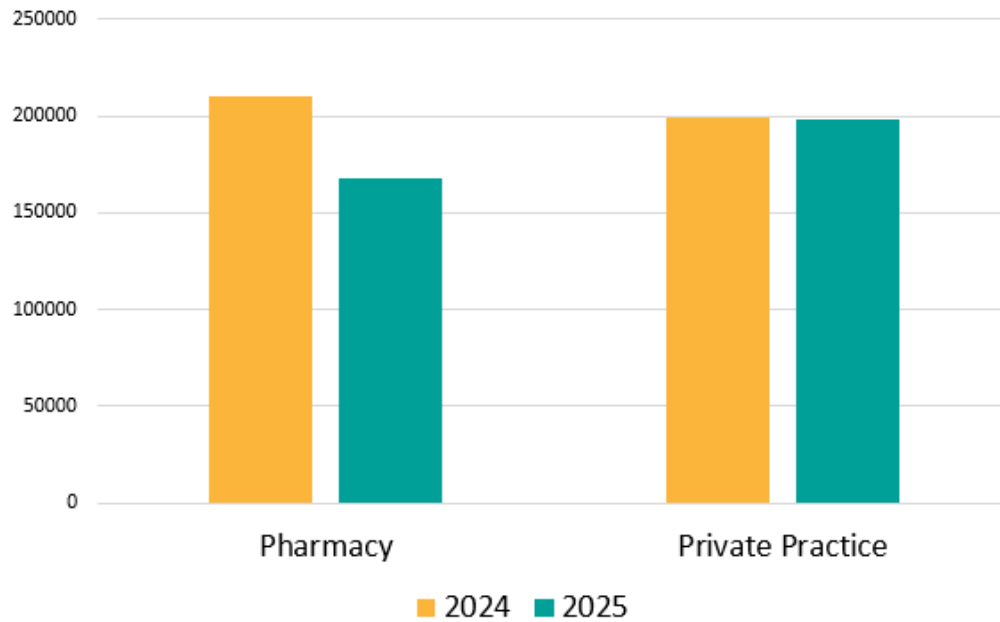
Weekly Oregon Influenza Immunization Totals, 2025-26 Compared to Prior 3 Seasons



Cumulative Oregon Influenza Immunizations, 2025-26 Compared to Prior 3 Seasons



Oregon Influenza Immunizations as of Oct 7, 2025 by Provider Type



FluBites

October 12, 2025- October 18, 2025

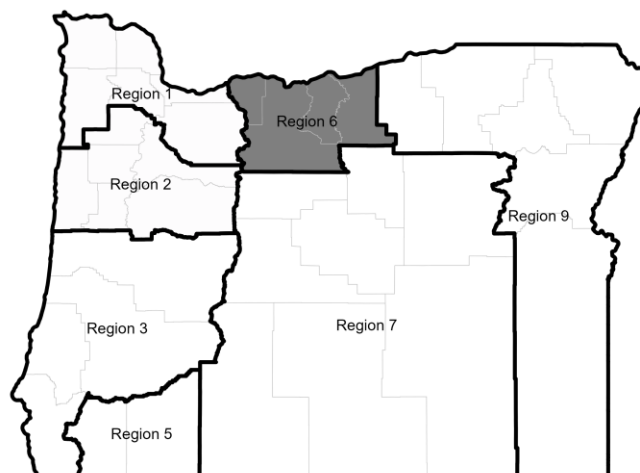
Influenza surveillance data at a glance		
	Percent Positivity ^a	Hospitalizations ^b
Current Week	0.1%	0
Previous Week	0.9%	2

^a Data from National Respiratory and Enteric Virus Surveillance System (NREVSS)

^b Hospitalization surveillance in Clackamas, Multnomah, and Washington counties only

Influenza Test Results in Oregon, NREVSS, Current Week				
Region	Influenza A	Influenza B	Total Tests	Percent Positivity
1	2 (0.3%)	0 (0.0%)	708	0.3%
2	1 (0.3%)	0 (0.0%)	368	0.3%
3	0 (0.0%)	0 (0.0%)	155	0.0%
5	0 (0.0%)	0 (0.0%)	365	0.0%
6	0 (0.0%)	0 (0.0%)	0	0.0%
7	0 (0.0%)	0 (0.0%)	390	0.0%
9	0 (0.0%)	0 (0.0%)	152	0.0%

Oregon Influenza Percent Positivity by Region



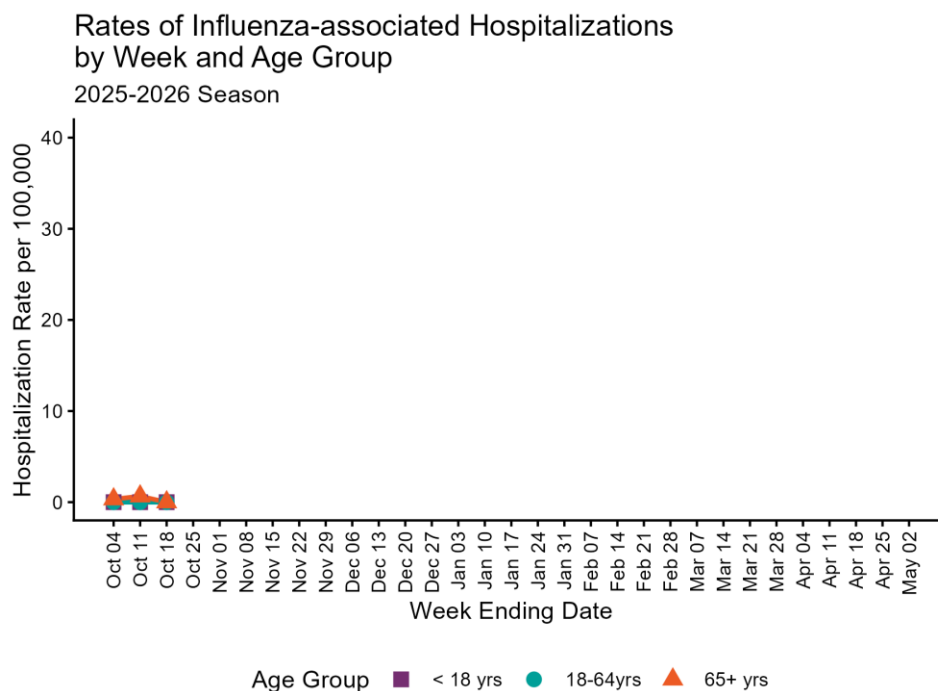
Percent Positivity 0 5 10 15 20

Regions with insufficient data are displayed as grey

Influenza Hospitalizations

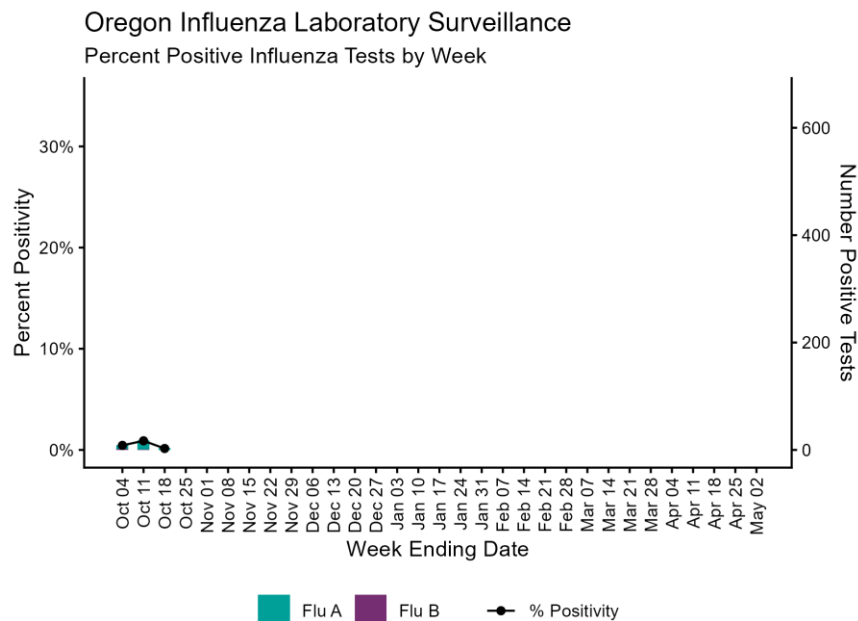
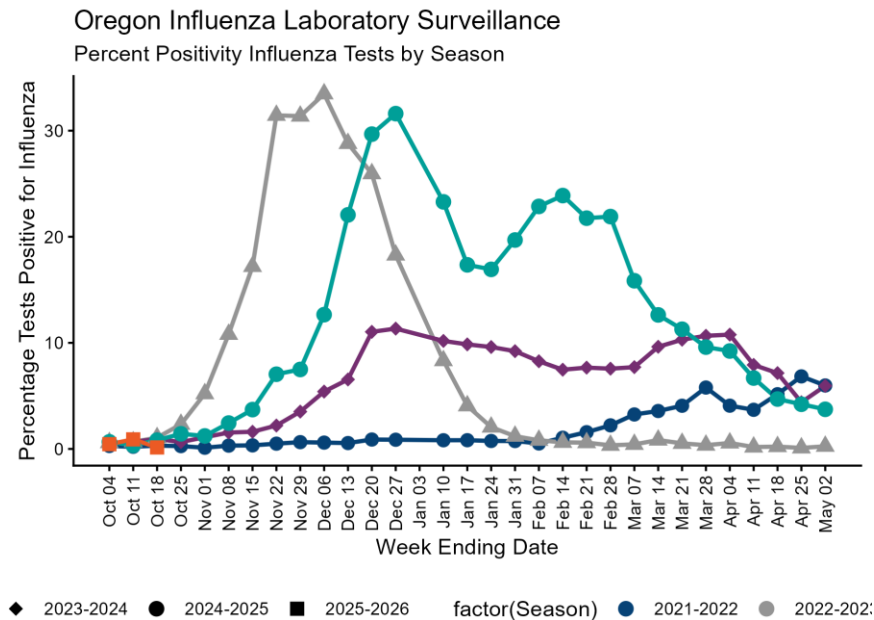
The Oregon Health Authority conducts population-based surveillance for laboratory-confirmed hospitalizations associated with influenza in Clackamas, Multnomah, and Washington counties during October 1 - April 30. To date, 3 hospitalizations have occurred during the 2025-2026 season. There were 0 hospitalizations reported during October 12, 2025 - October 18, 2025. The cumulative hospitalization rate for the 2025-2026 season is 0.2 per 100,000 people.

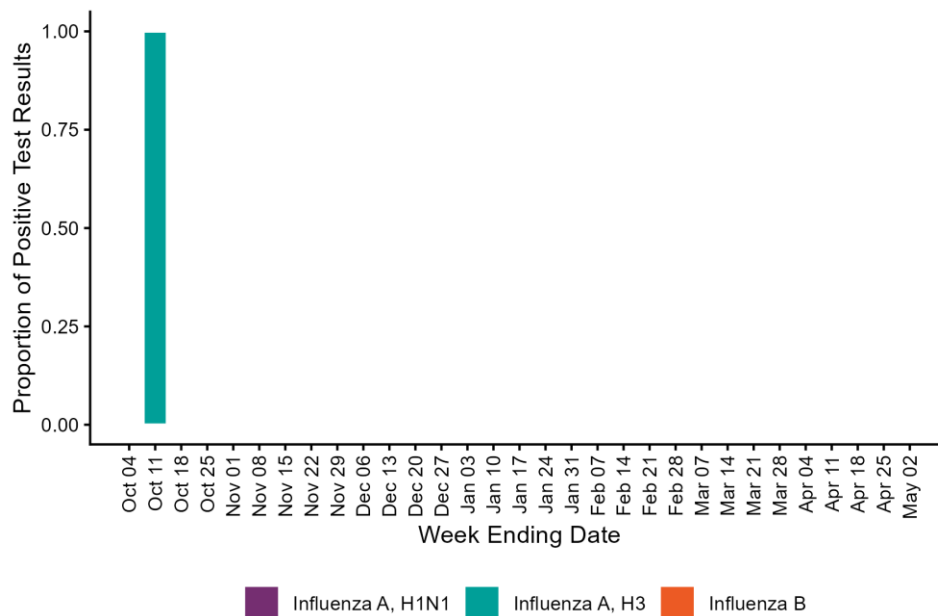
2025-2026 Influenza-Associated Hospitalizations		
Age Group (years)	N	Rate per 100,000 people
0-4	0	0
5-17	0	0
18-49	0	0
50-64	0	0
65+	3	1



Laboratory Data

0.1% of specimens tested for influenza were positive during October 12, 2025 - October 18, 2025. 0% of positive influenza specimens tested at the Oregon State Public Health Laboratory (OSPHL) this season are influenza A (H1N1), 100% are influenza A (H3), and 0% are influenza B. National laboratory trends can be found at [CDC FluView](https://www.cdc.gov/fluview).



Oregon State Public Health Laboratory (OSPHL) Influenza Testing
2025-2026 Season

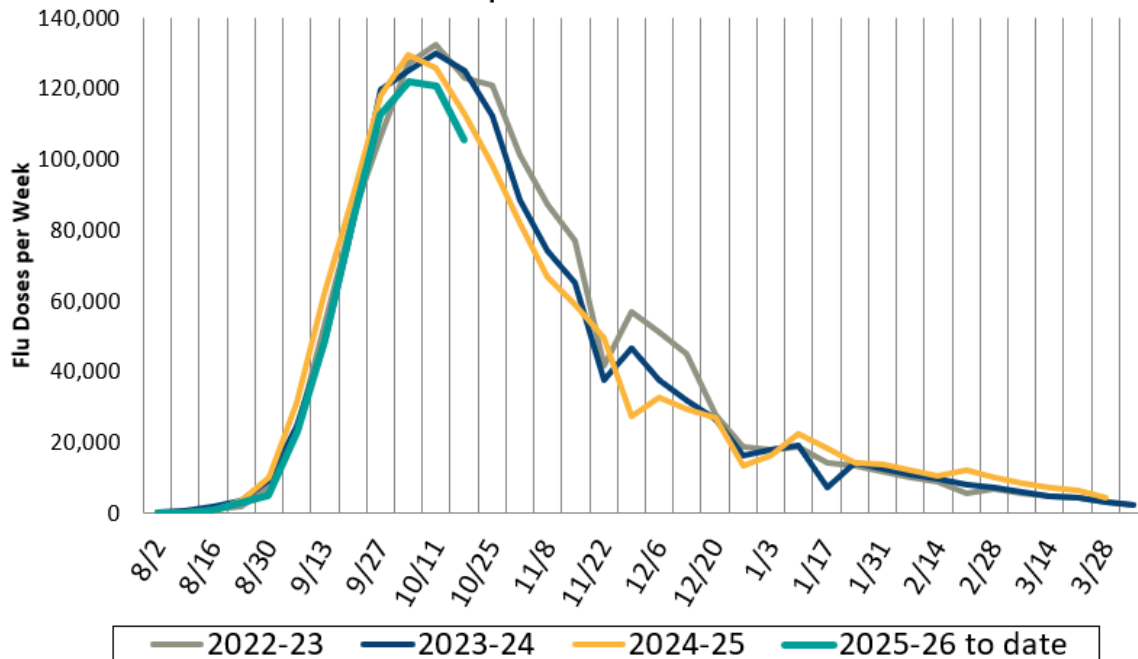
Avian Influenza

There has been 1 reported human case of highly pathogenic avian influenza (HPAI) H5N1 in Oregon. More information on avian influenza in humans is available from the [CDC](#). More information on avian influenza in animals is available from the [Oregon Department of Agriculture](#).

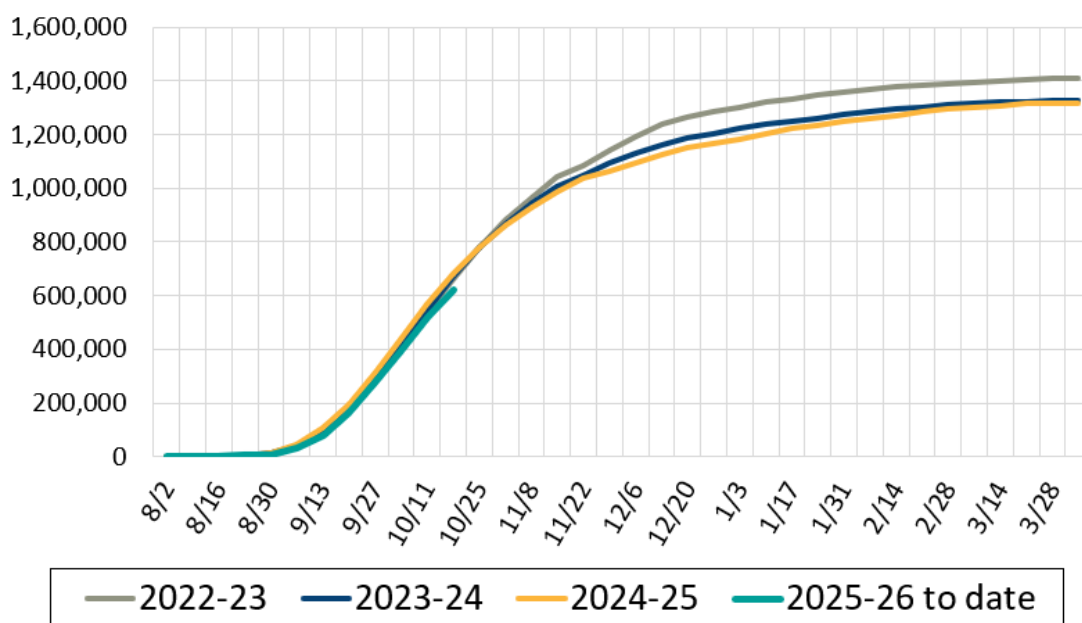
Immunization Data

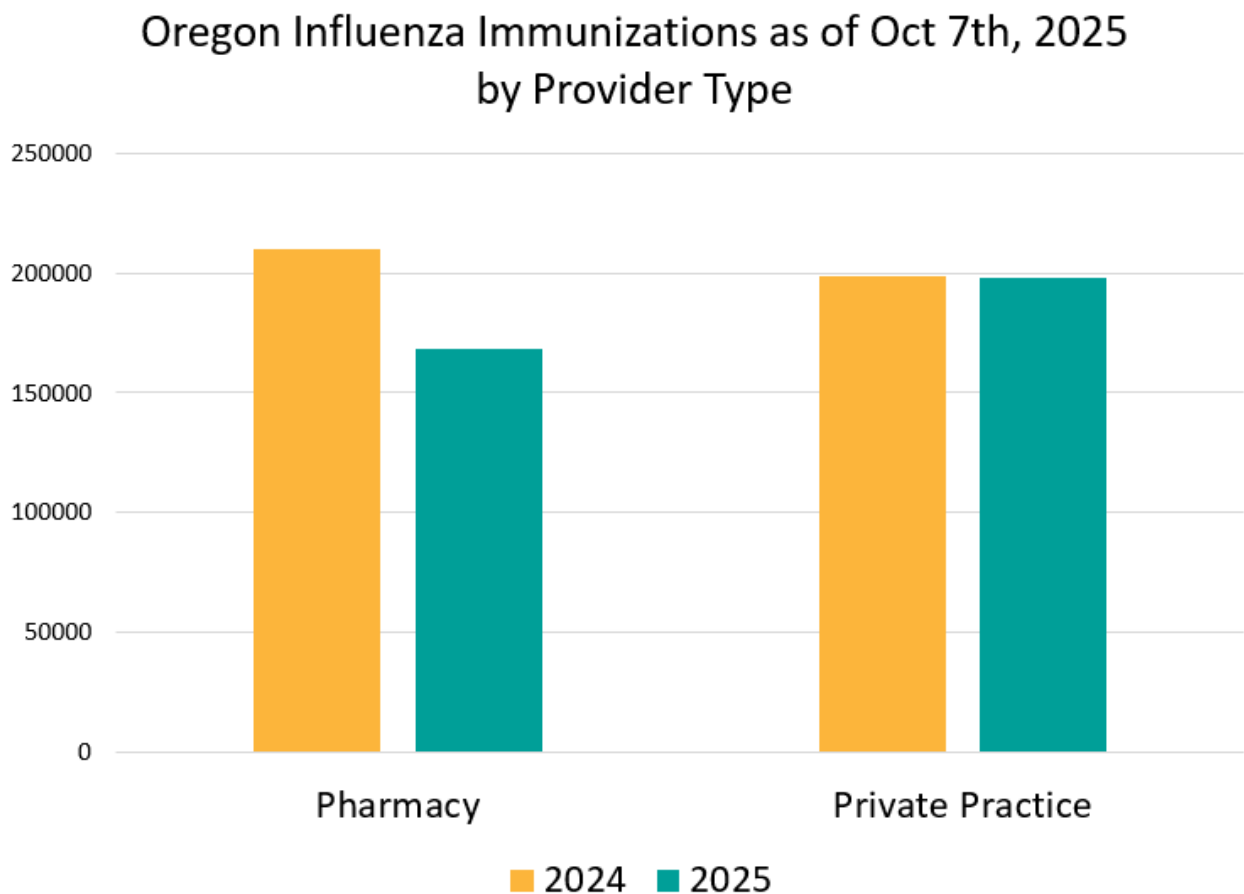
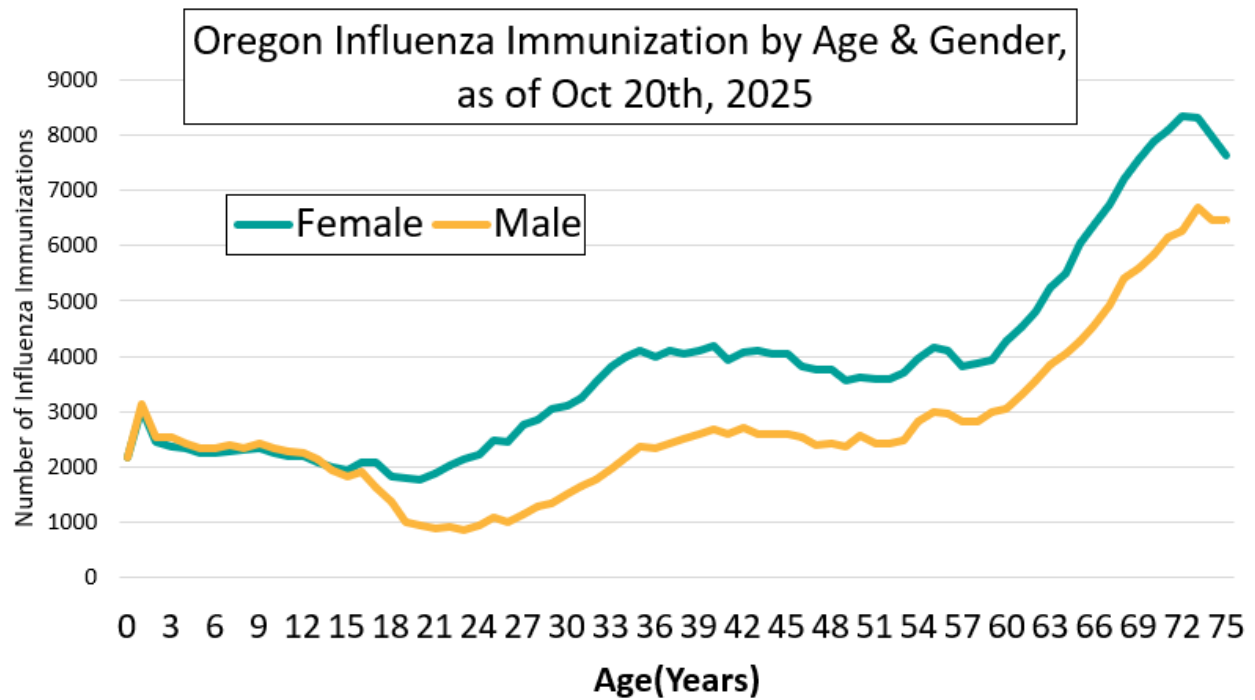
As of Oct 20th of 2025, influenza immunization seeking in Oregon has already peaked and started declining. Overall, the number of Oregonians seeking influenza immunizations this season is slightly lower than last season at this time. For this week, a chart is included looking at age and gender versus influenza immunizations in Oregon. Children do not show a substantial difference in influenza immunization by gender. However there is a stark difference among adults based on gender. For non-senior adults, 62% of influenza immunizations to date were given to women, and 38% to men.

Weekly Oregon Influenza Immunization Totals, 2025-26 Compared to Prior 3 Seasons



Cumulative Oregon Influenza Immunizations, 2025-26 Compared to Prior 3 Seasons





FluBites

October 05, 2025- October 11, 2025

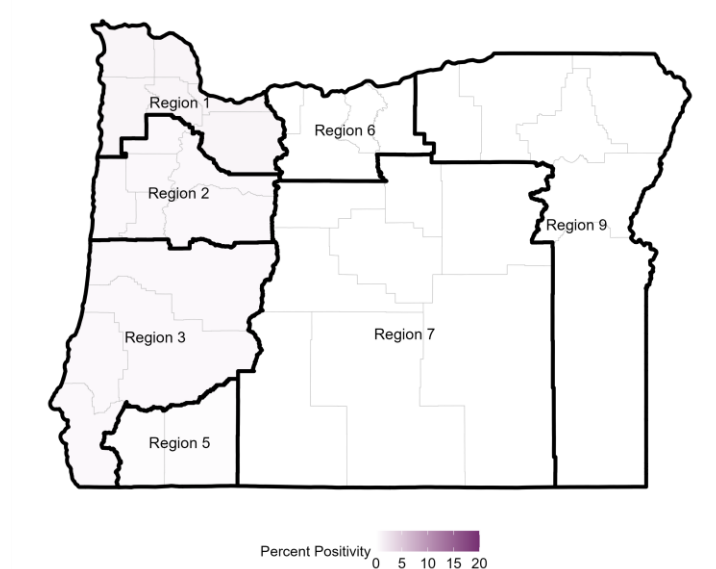
Influenza surveillance data at a glance		
	Percent Positivity ^a	Hospitalizations ^b
Current Week	0.4%	2
Previous Week	0.4%	1

^a Data from National Respiratory and Enteric Virus Surveillance System (NREVSS)

^b Hospitalization surveillance in Clackamas, Multnomah, and Washington counties only

Influenza Test Results in Oregon, NREVSS, Current Week				
Region	Influenza A	Influenza B	Total Tests	Percent Positivity
1	3 (0.7%)	1 (0.2%)	444	0.9%
2	2 (0.6%)	0 (0.0%)	351	0.6%
3	1 (0.6%)	0 (0.0%)	171	0.6%
5	1 (0.3%)	0 (0.0%)	325	0.3%
6	0 (0.0%)	0 (0.0%)	42	0.0%
7	0 (0.0%)	0 (0.0%)	378	0.0%
9	0 (0.0%)	0 (0.0%)	123	0.0%

Oregon Influenza Percent Positivity by Region

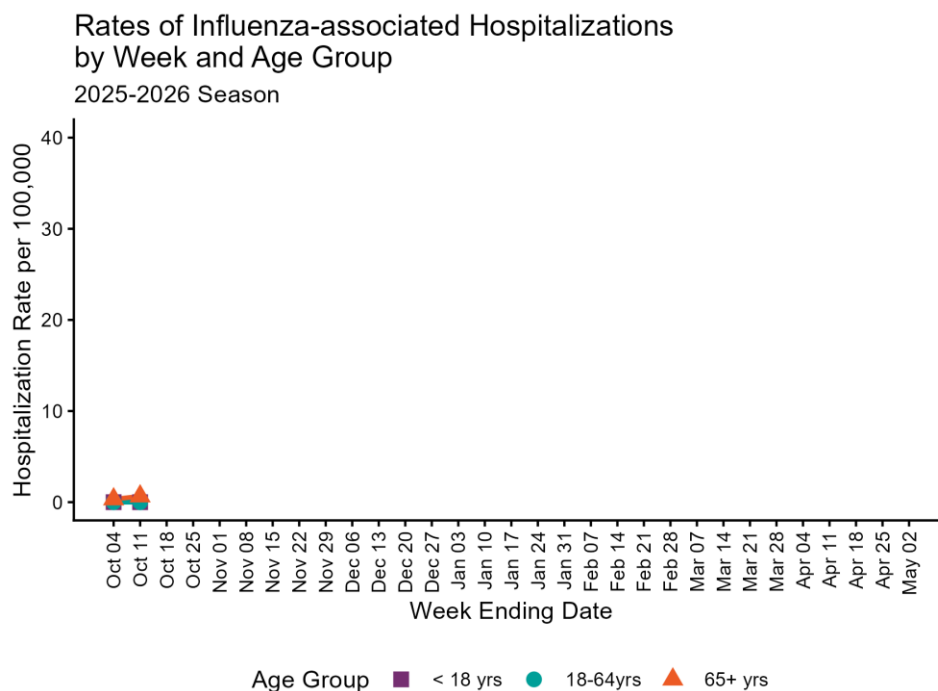


Regions with insufficient data are displayed as grey

Influenza Hospitalizations

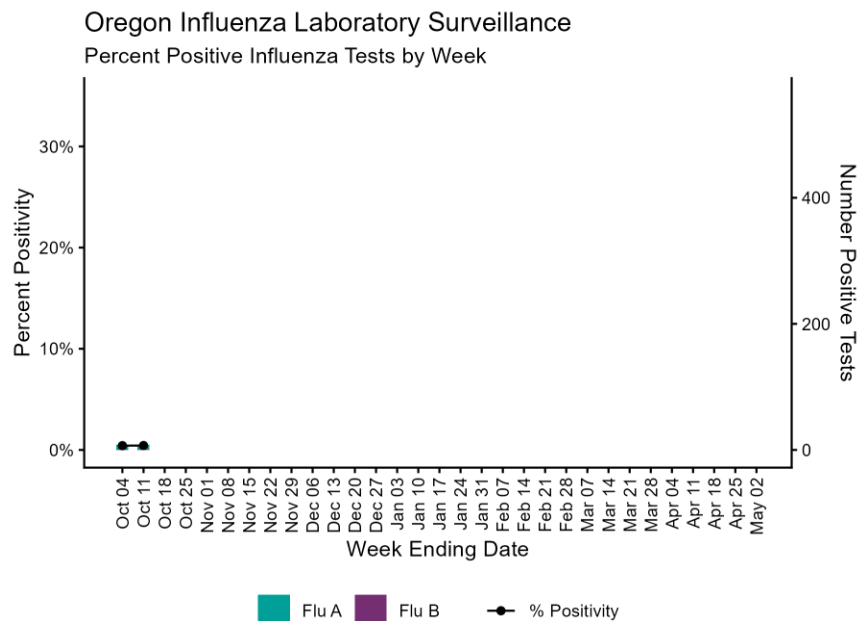
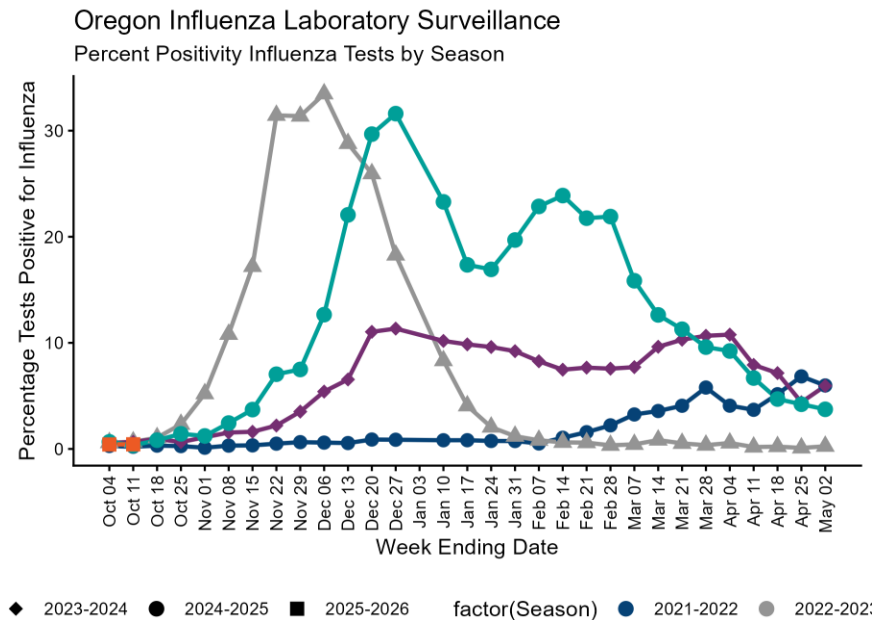
The Oregon Health Authority conducts population-based surveillance for laboratory-confirmed hospitalizations associated with influenza in Clackamas, Multnomah, and Washington counties during October 1 - April 30. To date, 3 hospitalizations have occurred during the 2025-2026 season. There were 2 hospitalizations reported during October 05, 2025 - October 11, 2025. The cumulative hospitalization rate for the 2025-2026 season is 0.2 per 100,000 people.

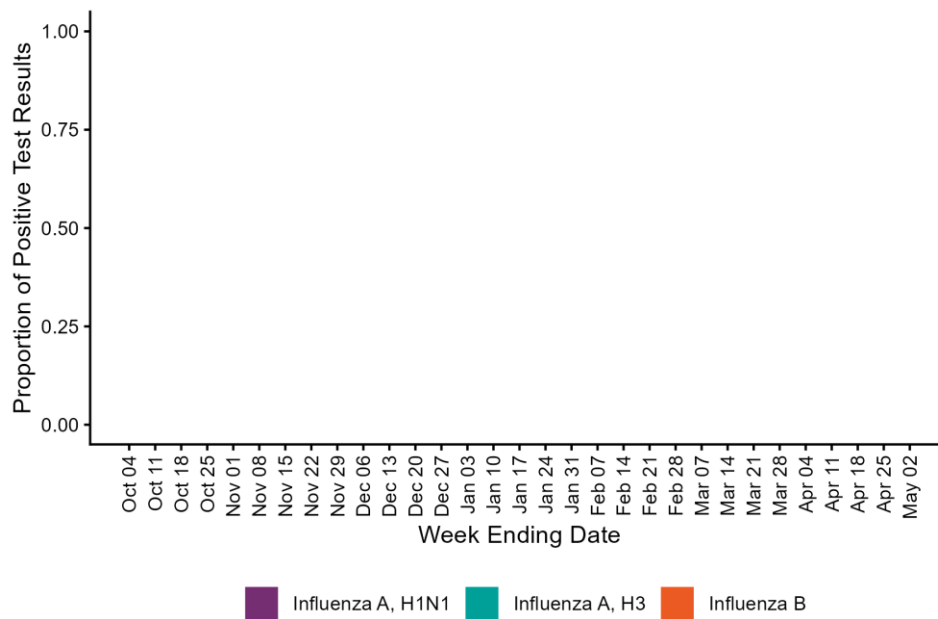
2025-2026 Influenza-Associated Hospitalizations		
Age Group (years)	N	Rate per 100,000 people
0-4	0	0
5-17	0	0
18-49	0	0
50-64	0	0
65+	3	1



Laboratory Data

0.4% of specimens tested for influenza were positive during October 05, 2025 - October 11, 2025. 0% of positive influenza specimens tested at the Oregon State Public Health Laboratory (OSPHL) this season are influenza A (H1N1), 0% are influenza A (H3), and 0% are influenza B. National laboratory trends can be found at [CDC FluView](https://www.cdc.gov/fluview/).



Oregon State Public Health Laboratory (OSPHL) Influenza Testing
2025-2026 Season

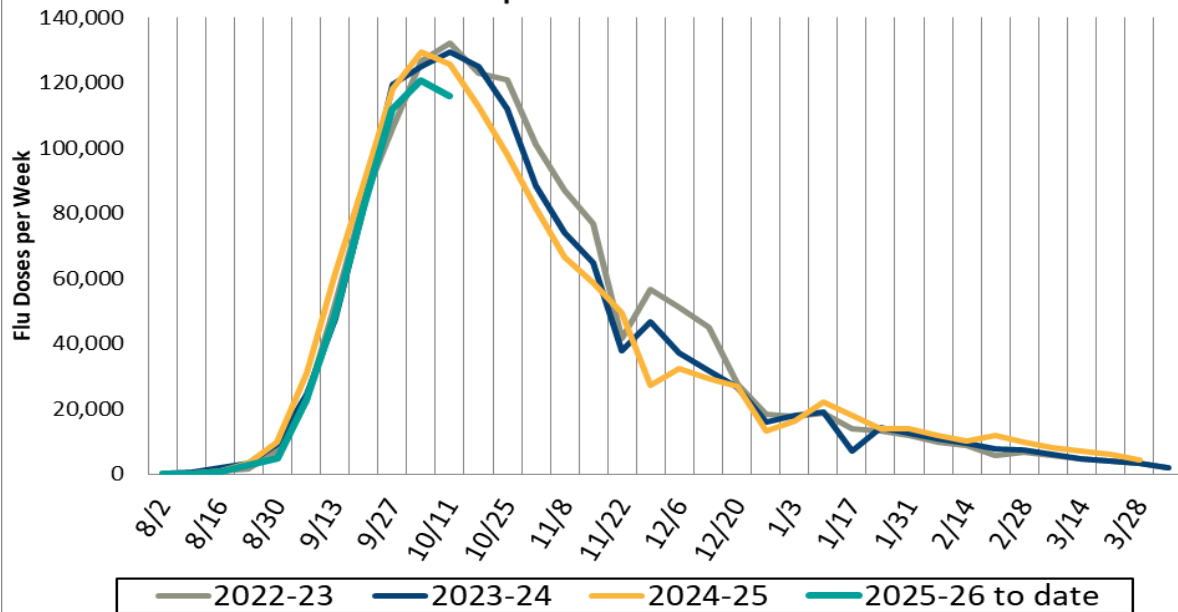
Avian Influenza

There has been 1 reported human case of highly pathogenic avian influenza (HPAI) H5N1 in Oregon. More information on avian influenza in humans is available from the [CDC](#). More information on avian influenza in animals is available from the [Oregon Department of Agriculture](#).

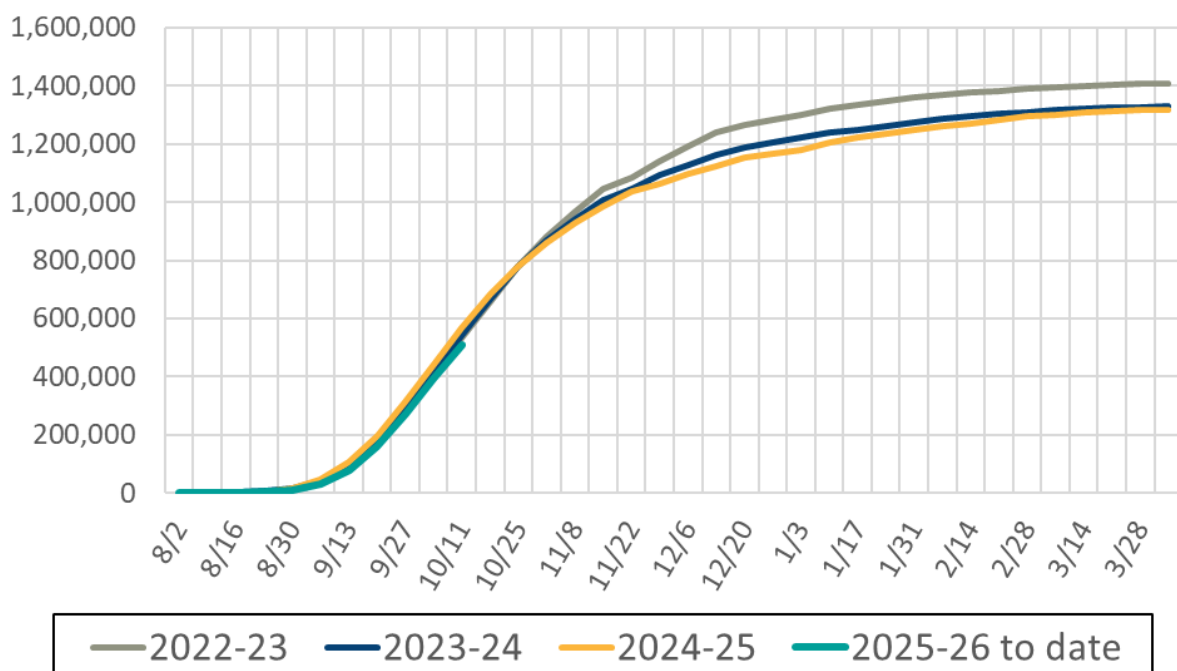
Immunization Data

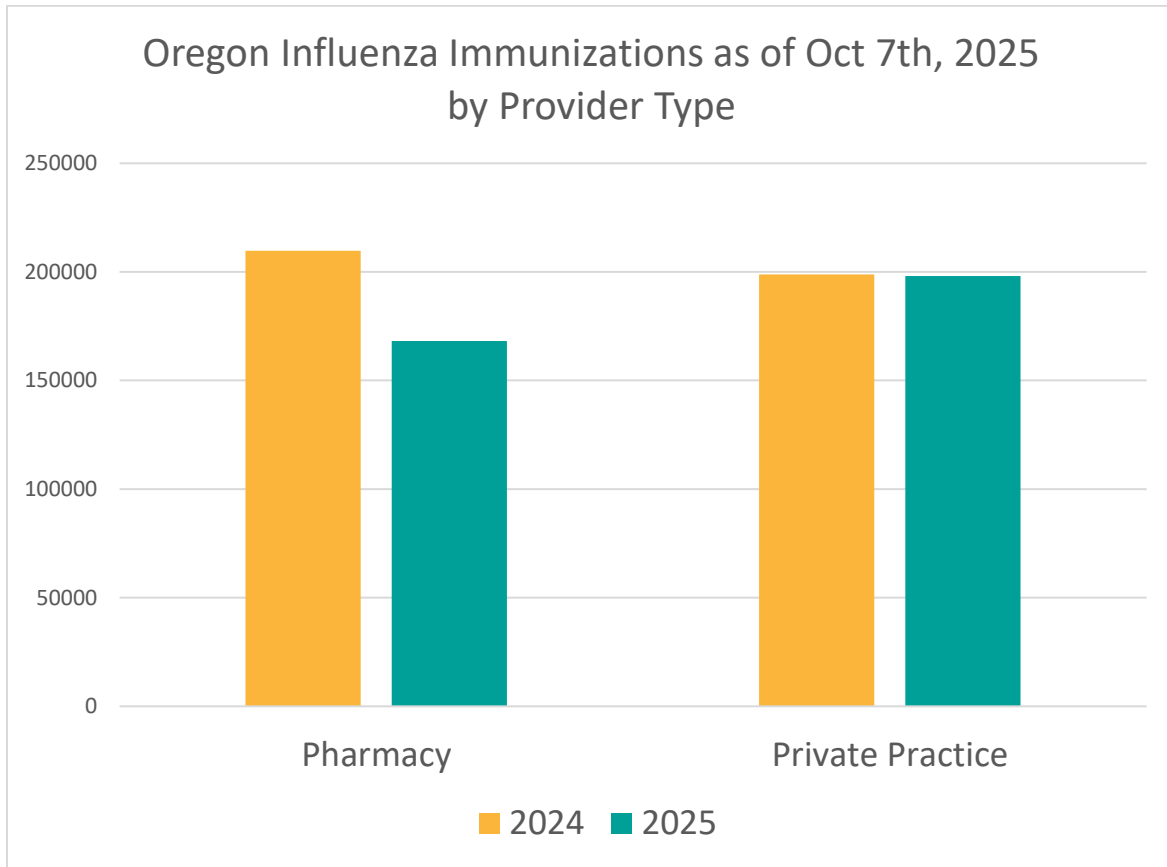
As of Oct 15th of 2025, weekly influenza immunization totals in Oregon appear to be peaking early this season compared to prior seasons. Overall the number of Oregonians seeking influenza immunizations this season is slightly lower than last season at this time.

Weekly Oregon Influenza Immunization Totals, 2025-26 Compared to Prior 3 Seasons



Cumulative Oregon Influenza Immunizations, 2025-26 Compared to Prior 3 Seasons





FluBites

September 28, 2025- October 04, 2025

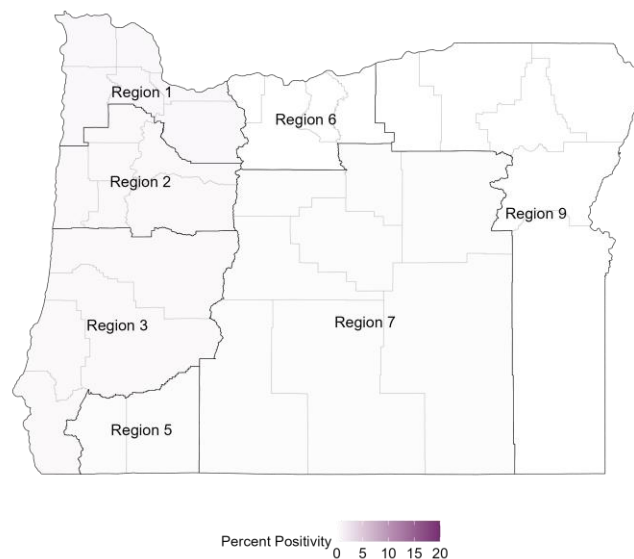
Influenza surveillance data at a glance		
	Percent Positivity ^a	Hospitalizations ^b
Current Week	0.4%	0

^a Data from National Respiratory and Enteric Virus Surveillance System (NREVSS)

^b Hospitalization surveillance in Clackamas, Multnomah, and Washington counties only

Influenza Test Results in Oregon, NREVSS, Current Week				
Region	Influenza A	Influenza B	Total Tests	Percent Positivity
1	3 (0.6%)	0 (0.0%)	496	0.6%
2	2 (0.5%)	0 (0.0%)	364	0.5%
3	0 (0.0%)	1 (0.5%)	193	0.5%
5	1 (0.3%)	0 (0.0%)	294	0.3%
6	0 (0.0%)	0 (0.0%)	45	0.0%
7	1 (0.3%)	0 (0.0%)	387	0.3%
9	0 (0.0%)	0 (0.0%)	81	0.0%

Oregon Influenza Percent Positivity by Region

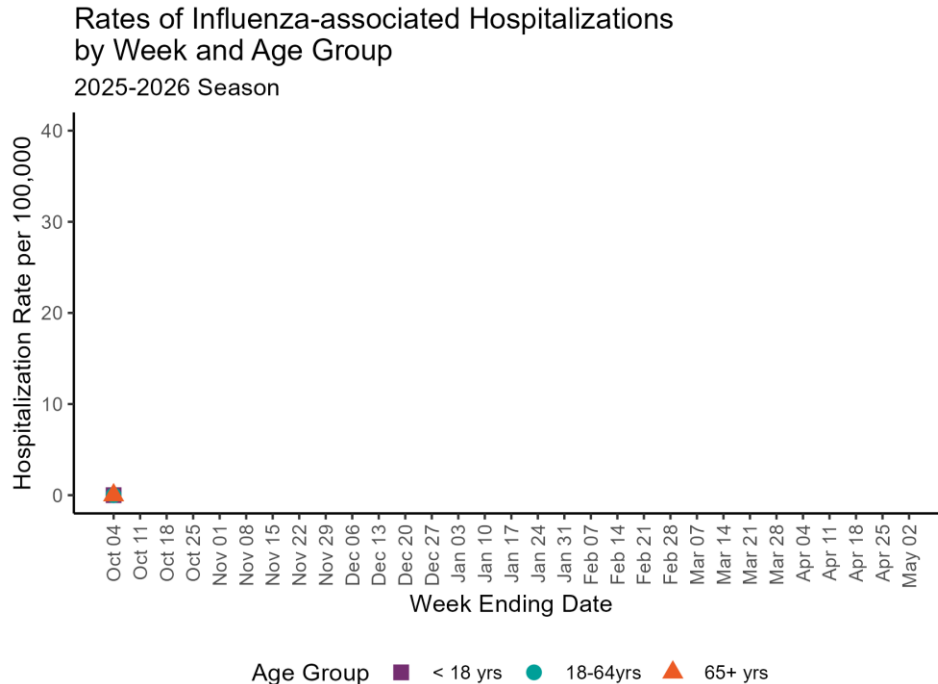


Regions with insufficient data are displayed as grey

Influenza Hospitalizations

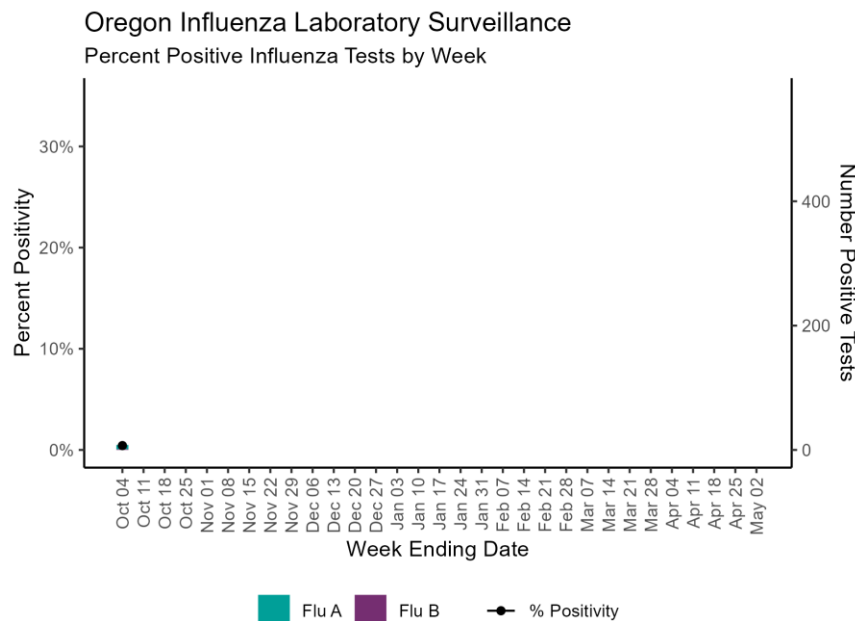
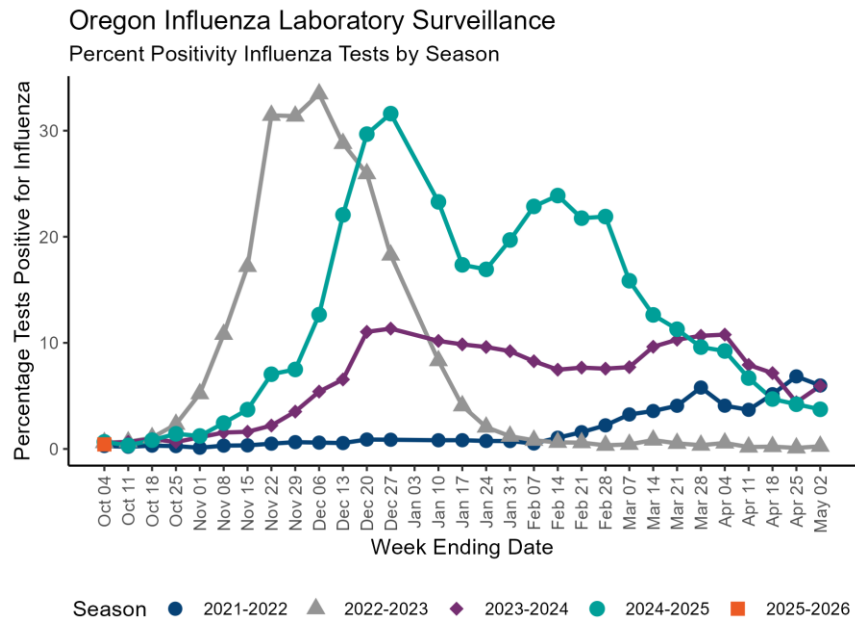
The Oregon Health Authority conducts population-based surveillance for laboratory-confirmed hospitalizations associated with influenza in Clackamas, Multnomah, and Washington counties during October 1 - April 30. To date, 0 hospitalizations have occurred during the 2025-2026 season. There were 0 hospitalizations reported during September 28, 2025 - October 04, 2025. The cumulative hospitalization rate for the 2025-2026 season is 0 per 100,000 people.

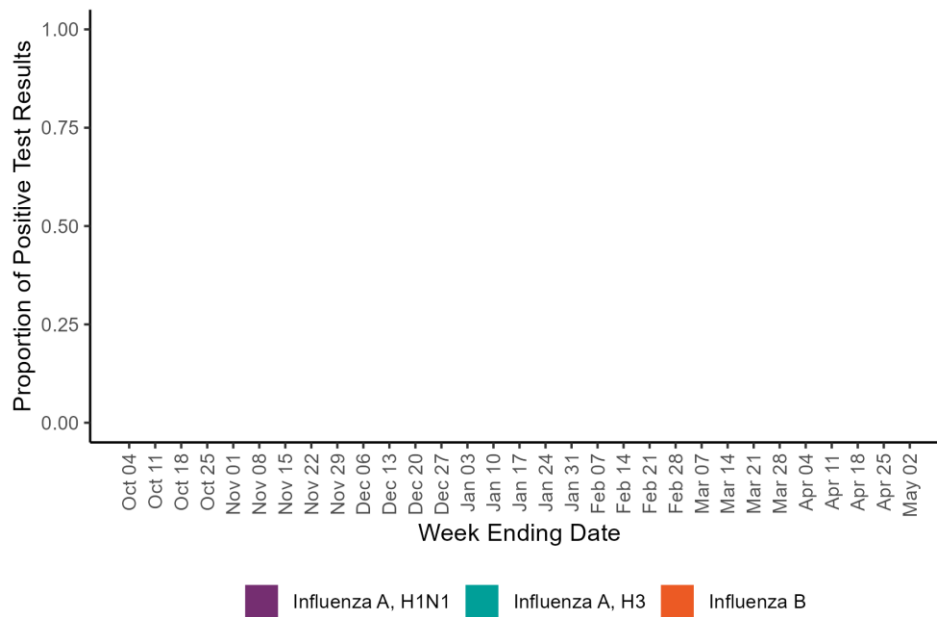
2025-2026 Influenza-Associated Hospitalizations		
Age Group (years)	N	Rate per 100,000 people
0-4	0	0
5-17	0	0
18-49	0	0
50-64	0	0
65+	0	0



Laboratory Data

0.4% of specimens tested for influenza were positive during September 28, 2025 - October 04, 2025. 0% of positive influenza specimens tested at the Oregon State Public Health Laboratory (OSPHL) this season are influenza A (H1N1), 0% are influenza A (H3), and 0% are influenza B. National laboratory trends can be found at [CDC FluView](https://www.cdc.gov/fluview/).



Oregon State Public Health Laboratory (OSPHL) Influenza Testing
2025-2026 Season

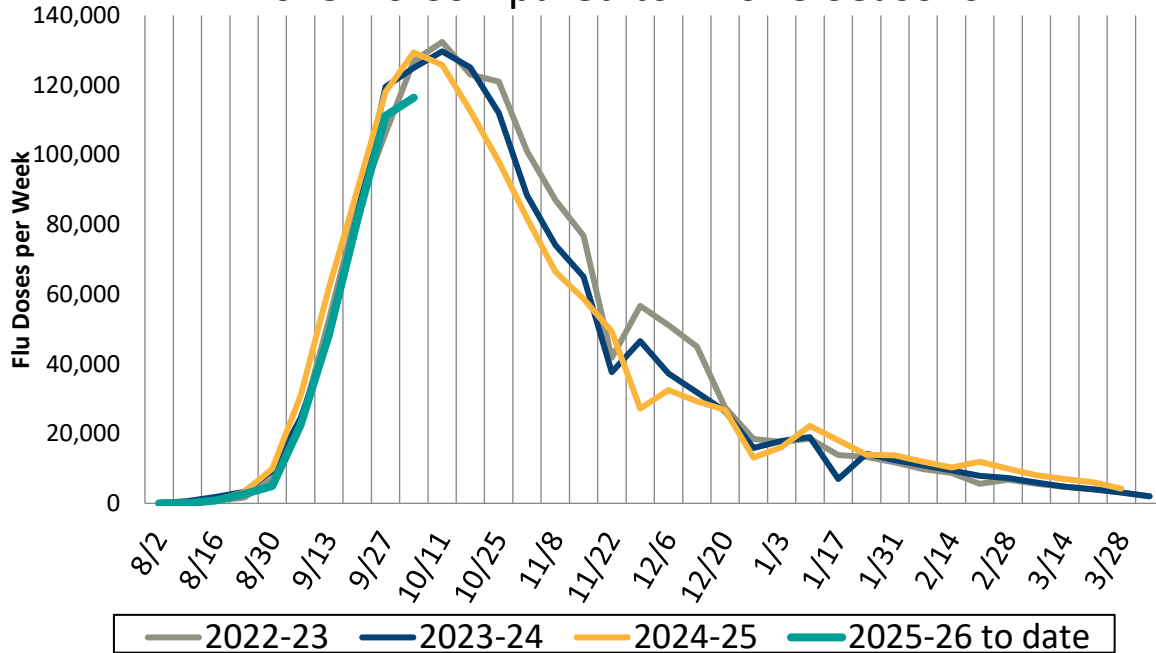
Avian Influenza

There has been 1 reported human case of highly pathogenic avian influenza (HPAI) H5N1 in Oregon. More information on avian influenza in humans is available from the [CDC](#). More information on avian influenza in animals is available from the [Oregon Department of Agriculture](#).

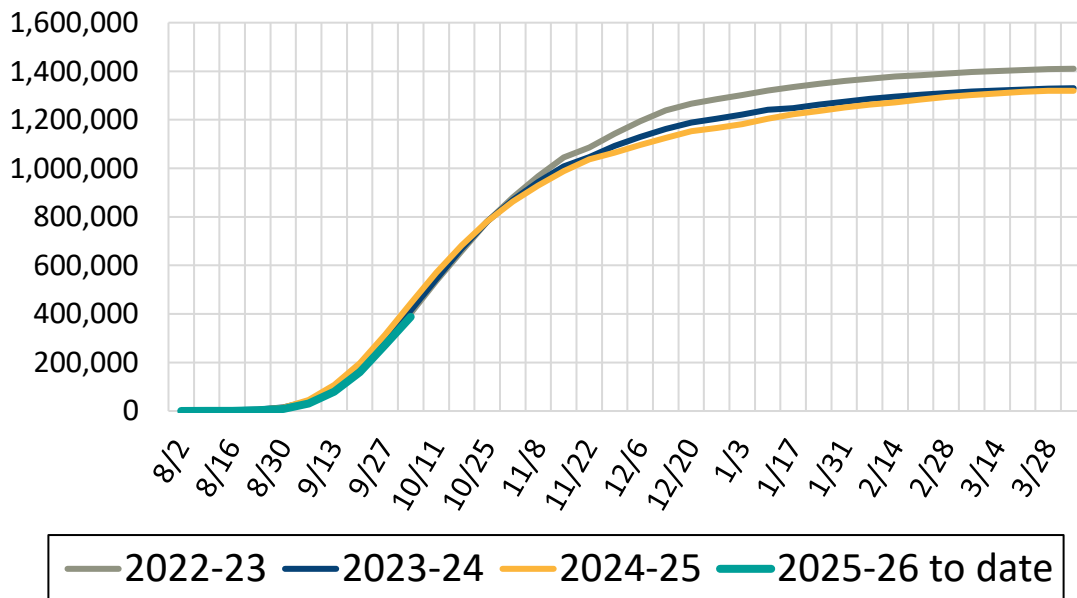
Immunization Data

As of Oct 7th of 2025, weekly influenza immunization totals in Oregon are similar to but slightly lower than past seasons at this time of year. Influenza immunizations given by private practices and non-pharmacy providers are near identical to last season. However, the total of influenza immunization given at pharmacies is substantially down this season compared to prior ones.

Weekly Oregon Influenza Immunization Totals, 2025-26 Compared to Prior 3 Seasons



Cumulative Oregon Influenza Immunizations, 2025-26 Compared to Prior 3 Seasons



Oregon Influenza Immunizations as of Oct 7th, 2025 by Provider Type

