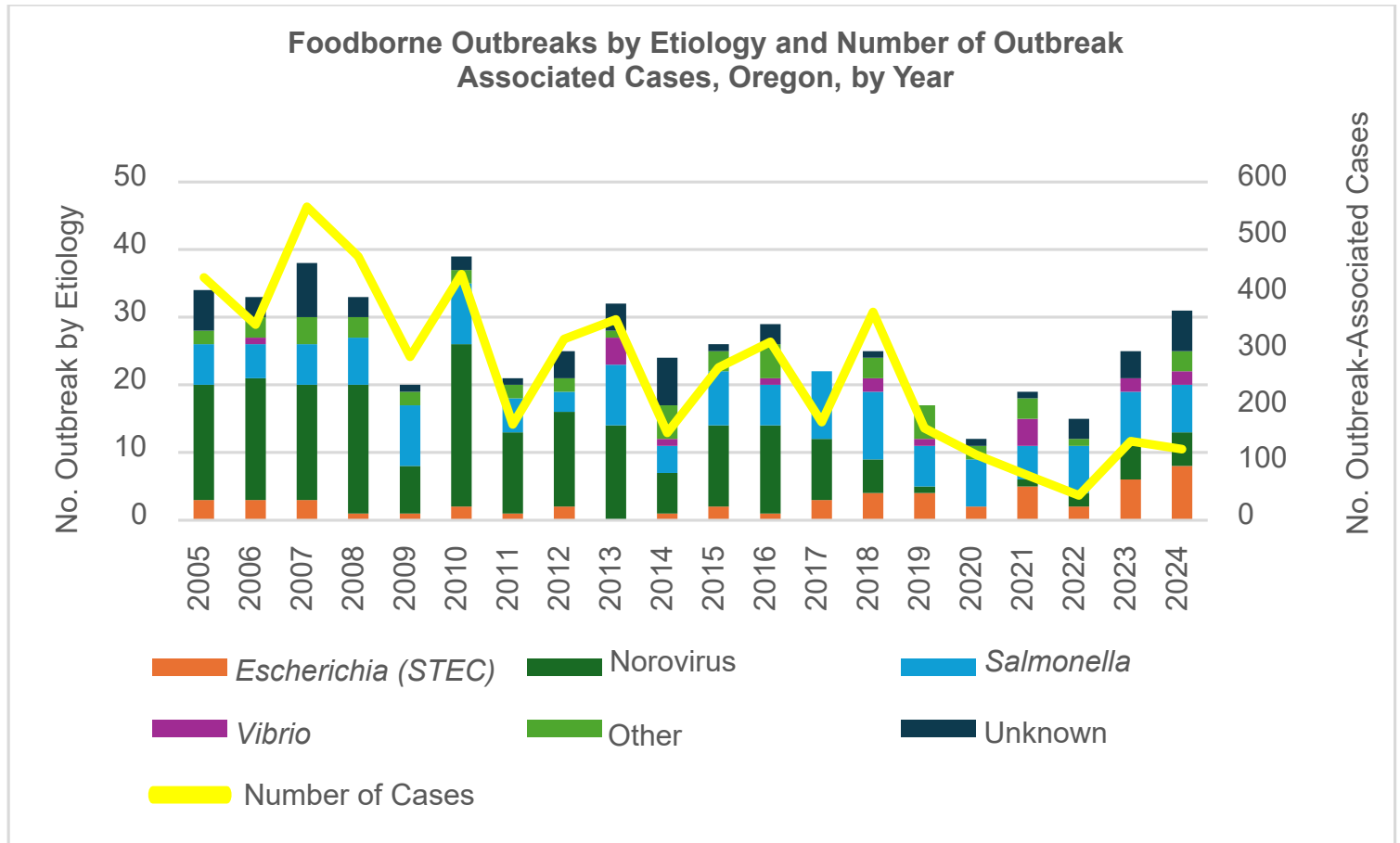


# Characteristics of Foodborne Outbreaks Oregon, 2005-2024

Oregon Health Authority, Acute and Communicable Disease Prevention  
August 21, 2025



- Decrease in 2020, despite a multistate *Salmonella* outbreak with 100+ cases.
- COVID-19 preventive measures likely contributed to decrease during 2020-2022.
- Overall, the most common etiology was Norovirus, followed by *Salmonella*.

## Foodborne Outbreaks by Exposure Category, Oregon, 2005-2024

Exposure Category	No. (%) of Outbreaks	No. (%) of Outbreak-Associated Cases	No. (%) of Deaths
<b>Food Service</b>	<b>310 (59.3%)</b>	<b>3,318 (62.3%)</b>	<b>3 (37.5%)</b>
Institutional	11 (2.1%)	213 (4.0%)	1 (12.5%)
Office	26 (5.0%)	371 (7.0%)	0 (0.0%)
Religious	13 (2.5%)	152 (2.9%)	0 (0.0%)
Residential	84 (16.1%)	491 (9.2%)	1 (12.5%)
Unknown	35 (6.7%)	66 (1.2%)	1 (12.5%)
Other	26 (5.0%)	404 (7.6%)	2 (25%)
Missing	18 (3.4%)	314 (5.9%)	0 (0.0%)
<b>Totals</b>	<b>523 (100%)</b>	<b>5,329 (100%)</b>	<b>8 (100%)</b>

- Food service category includes multiple subcategories (e.g., caterer, restaurant, event space, fairground, grocery store).
- Food workers were implicated in 17.7% of food service-associated outbreaks (only one outbreak documented bare-hand contact with food by a food handler).
- Exposure category likely underestimates food service exposure since food may be prepared at a food service establishment and then eaten elsewhere.

## Foodborne Outbreaks with Norovirus Etiology by Exposure Category, Oregon, 2005-2024

Exposure Category	No. (%) of Outbreaks	No. (%) of Outbreak-Associated Cases	No. (%) of Deaths
<b>Food Service</b>	<b>149 (74.1%)</b>	<b>2,054 (69.6%)</b>	<b>3 (75.0%)</b>
Institutional	6 (3.0%)	171 (5.7%)	1 (25.0%)
Office	13 (6.5%)	257 (8.6%)	0 (0.0%)
Religious	8 (4.0%)	117 (3.9%)	0 (0.0%)
Residential	16 (8.0%)	143 (4.8%)	0 (0.0%)
Unknown	0 (0.0%)	0 (0.0%)	0 (0.0%)
Other	6 (3.0%)	188 (6.3%)	0 (0.0%)
Missing	3 (1.5%)	64 (2.1%)	0 (0.0%)
<b>Totals</b>	<b>201 (100.0%)</b>	<b>2,994 (100.0%)</b>	<b>4 (100.0%)</b>

- Food workers were implicated in 29.5% of food service-associated outbreaks (only one outbreak documented bare-hand contact with food by a food handler).

Special acknowledgment to the following OHA Environmental Health staff for their feedback in developing this summary: Valerie Aliski; Eric Evans; Craig Geddes; Cris Hernandez.