

Orpheus County Feedback Meeting

Agenda & Notes

*Data for Public Health
Policy*

Date: August 9, 2018 **Time:** 1:30-3:00 **Place:** PSOB AOC, 4th floor (or room 710)

ALL ORPHEUS DATA FROM SCREEN SHOTS SHOWN IN THESE MINUTES ARE FAKE

Counties: Baker; **Benton** (Gerald, Mary); **Clackamas** (Liz, Renee); **Clatsop** (Robyn); Columbia (); Coos (); Crook (); **Curry** (Michelle); **Deschutes** (Debbie, Jennifer, Jill); **Douglas** (Bailey); Grant (); Harney (); **Hood-River** (Margaret); **Jackson** (Al, Andrea, Jeanelle, Patty); **Jefferson** (Joy); Josephine (); **Klamath** (Sharon); **Lake** (Judy); **Lane** (Carolina, Heather, Lisa, Michelle, Phebe, Sidney); Lincoln (); **Linn** (Debby); Malheur (); **Marion** (Dawn, Greg, Justin); **Morrow** (Shelly); **Multnomah** (Marta, Perry), **NCPHD** (Jeremy, Nora); **Polk** (Kirk, Martha); Tillamook (); Umatilla (); Union (); Wallowa; Warm Springs (); **Washington** (Jennifer, Kathleen); Wheeler; **Yamhill** (Kara, Nicole)


State: Cedric, Emilio, Juventila, Kiley, Lisa, Missy, Renee, Ryan, Shannon, Stephen, Tila

NOTES		
Item	Discussion/Decisions	Action items
1	Electronic Laboratory Reporting updates/issues – Stephen for Tasha for Michelle <ul style="list-style-type: none">- Spectra Labs will be onboarding within the next few weeks.	Michelle to discuss duplicates next month.
2	Feedback on new Online Case log Stephen and users <ul style="list-style-type: none">- Purpose: To minimize duplicate data entry; to work with long-term care facilities (LTCs), etc. to enter data directly into Online Case log- Best practice for avoiding confusion is to get everyone, including LHDs when applicable, to also enter data into the Online Case Log- When initially reporting an outbreak to the on-call epi, please determine the State UERT (Urgent Epi Response Team) Lead to discuss creating the online	Counties to provide feedback with regard to the preferred way for initiating and managing Online Case Log.

Orpheus County Feedback Meeting

Agenda & Notes

Data for Public Health Policy

	<p>case log. State UERT lead will create the Online Case Log login information but prefers LHD Outbreak Lead to coordinate Online Case Log with LTC Contacts.</p> <ul style="list-style-type: none"> - LHD Lead and State UERT Lead to coordinate importing Online Case log into regular Case Log, Locking, Unlocking, etc. <p>https://epiweb.oha.state.or.us/fmi/webd/CaseLogOnline?homeurl=http://www.healthoregon.org/diseasereporting</p> <p>Outbreak ID: 2018-4948 Password: d7j8kpjb</p> <p>Be sure to click the 'Save' button and log out when you're done. Thank you.</p> 	
3	<p>REAL D (Race Ethnicity and Language Disability) data fields and online training workgroup status – Stephen for Heather and Tasha</p> <ul style="list-style-type: none"> - 2 meetings since last User Group meeting presentation. Meetings are every other week and comprise LPHA (3+) & State Staff (ACDP and HST). Next meeting is August 16th. - REAL D Collection training will be in two modules. One would be background on why we are collecting this data and discuss health equity, social determinants of health, and the intersection of race, ethnicity, language, and disability data collection. Race, ethnicity, language, and disability all are indicators for health outcomes. The training would then discuss the changes 	<p>Please follow up directly with Heather or Tasha for further information.</p>

Orpheus County Feedback Meeting

Agenda & Notes

*Data for Public Health
Policy*

	<p>in how we will be collecting this data, the REAL D questions, best practices on how to ask the questions, and resources to get the data we need.</p> <ul style="list-style-type: none">- The second REAL D collection training module would potentially discuss ways to use the data, simulations in Orpheus application, and role playing, etc. We are consulting a draft implementation guide that Office of Equity and Inclusion shared with us related to REAL D. Alyssa and Heather will be meeting with REAL D analyst to ask for updated guidance and share and get feedback on content. We asked interviewers how they have been collecting race/ethnicity and language information. We will likely pilot the new questions and a skeleton REAL D training mid- September in ACDP with Hillary's staff. We are going to consult OHA's attorney to ask about HIPAA, ICE, and federal data requests. We do report to CDC but the information is de-identified. We would like to be able to provide a one pager with FAQs, like Census workers do to people they interview, which addresses our data use and who we won't share the data with.- Tom is working on better data storage options. Currently, data are captured in same field and should be separate fields for each category and then a drop-down list for the primary race piece, after the open-ended question.- We are working on how we would best ask questions of the interview subjects and how to get clarification on race/ethnicity answers. Country of origin (for example) could create for follow up question and we want to ensure we are capturing their identity how they intended without prompting them or leading them. We have talked about a searchable crosswalk table or document that interviewers could use to help clarify r/e categories related to country of origin, etc. We have discussed providing a toolkit to accompany the training	
--	-----------------------------------------------------------------------------------------------------------------------------------------------------------------------------------------------------------------------------------------------------------------------------------------------------------------------------------------------------------------------------------------------------------------------------------------------------------------------------------------------------------------------------------------------------------------------------------------------------------------------------------------------------------------------------------------------------------------------------------------------------------------------------------------------------------------------------------------------------------------------------------------------------------------------------------------------------------------------------------------------------------------------------------------------------------------------------------------------------------------------------------------------------------------------------------------------------------------------------------------------------------------------------------------------------------------------------------------------------------------------------------------------------------------------------------------------------------------------------------------------------------------------------------------------------------------------------------------------------------------------------------------------------------------------------------------------------------------------------------------------------------------------------------------------------------------------------------------------------------------------------------------------------------------------------------------------------------------------------	--

Orpheus County Feedback Meeting

Agenda & Notes

*Data for Public Health
Policy*

	<p>which would include iLearn training related to health equity and cultural responsiveness, REAL D resources, language access resources, and scripts.</p> <ul style="list-style-type: none">- Having a strong introductory statement, explaining why we are asking these questions, is key. The flow of the interview is important. We discussed how and when we tell people that answering the questions are optional. All questions in an interview, not just REAL D, are optional. We don't want to provide an out for not collecting r/e and language data. Discomfort in asking these questions is largely why we have such high rates of unknown or missing race in Orpheus currently. We need to place value on collecting this data and doing it accurately and with respect to people's complex racial and ethnic identities.- Alyssa and Heather have crafted outline of Part 1 content and shared slides at 8/02 meeting. They asked for feedback by 8/14 in advance of next meeting. June will be on vacation and Alyssa will be facilitating.- Though we had asked for an exemption in asking disability related questions on REAL D form we discussed including them now and not delaying rollout. Is there a function in delaying? We cannot change the wording in any of the questions, we can change the order we ask, we can ask disability at the end if we are worried about subject fatigue. All of these questions will add time to the interview. However, asking them is required, as this is a legislative imperative. Any input is welcome on whether we stick with our proposed delay of rolling out disability questions or whether we just include them in this current collection training. We don't want to have to do an addendum training at a later date.- Q&A (excerpts provided by REAL+D point person Heather Jamieson):	
--	--------------------------------------------------------------------------------------------------------------------------------------------------------------------------------------------------------------------------------------------------------------------------------------------------------------------------------------------------------------------------------------------------------------------------------------------------------------------------------------------------------------------------------------------------------------------------------------------------------------------------------------------------------------------------------------------------------------------------------------------------------------------------------------------------------------------------------------------------------------------------------------------------------------------------------------------------------------------------------------------------------------------------------------------------------------------------------------------------------------------------------------------------------------------------------------------------------------------------------------------------------------------------------------------------------------------------------------------------------------------------------------------------------------------------------------------------------------------------------------------------------------------------------------------------------------------------------------------------------------------------------------------------------------------------------------------------------------------------------------------------------------------------------------------------------------------------------------------------------------------------------------------------------------------	--

Orpheus County Feedback Meeting

Agenda & Notes

*Data for Public Health
Policy*

- **What is the science behind a person's heritage (not just "race") affecting communicable disease?** Heritage can overlap on with race, ethnicity, and nationality. Heritage refers to the ancestors of a person, and what they identified with. In 2013 the Census Bureau said "we recognize that race and ethnicity are not quantifiable values, rather, identity is a complex mix of one's family and social environment, historical or socio-political constructs, personal experience, context, and many other immeasurable factors
- **Are we more likely to get *E. coli* because of our heritage? Pertussis? Syphilis?** It basically boils down social determinants of health. Race being one of those. I think we should collect more of the social determinants of health, but many aren't able to be collected in a standardized way, or collected without causing trauma or distrust. We are getting better at collecting data about persons experiencing homelessness and persons who inject, we know those are risk factors for CD. We know race is a primary indicator in health outcomes and we already are collecting it in Orpheus. REAL+D is a legislative bill and we were denied an exemption.
- **Are there factors in the host themselves in our infectious disease triangle that increase the risk of infections based on heritage?** The research around race, socioeconomic status (SES), and infectious disease is evolving, but quick literature review will show you are there are disparities in infectious disease related to race/ethnicity, which overlaps with heritage.
- **Socioeconomic status has been proven to increase the risk of all diseases, including communicable diseases. Why aren't we asking about that?** We do collect address data, which is an area-based SES indicator

Orpheus County Feedback Meeting Agenda & Notes

*Data for Public Health
Policy*

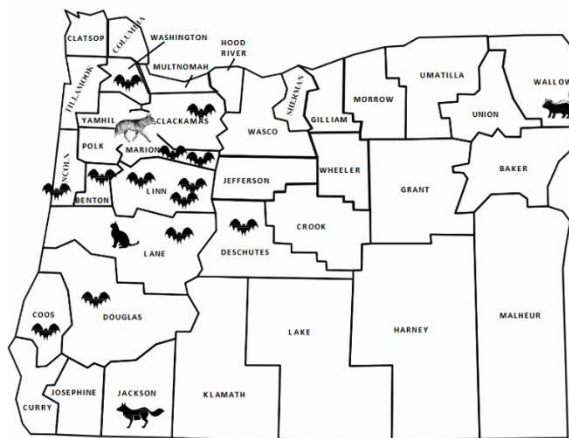
- 4 **Data QA metrics – report overhaul update – any new reports needed? – Stephen for Tasha**
- The tool itself and the measures have been finalized and will be effective October 9th, 2018.
 - Please attend the Wednesday Webinar, September 5th for more details

Tasha to unveil the County Review Tool on September 5th, 2018.

Counties to request or give input on any new or existing reports.

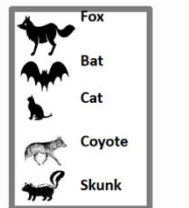
5 **Rabies update – Emilio**

**Rabies-positive Animals
Oregon, 2017**



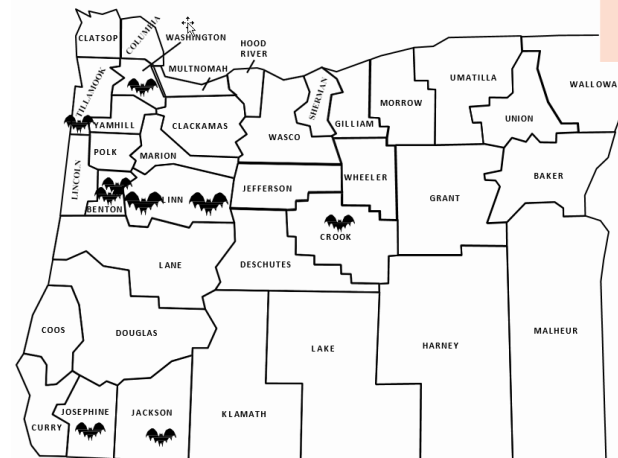
Updated: 10/24/2017

Month	County	Species
May	Lane	1 Cat
June	Douglas	1 Bat
July	Benton	1 Bat
July	Deschutes	1 Bat
August	Marion	2 Bats
	Linn	1 Bat
	Lincoln	1 Bat
	Linn	1 Bat
September	Lane	1 Bat
	Clackamas	1 Bat
	Washington	1 Bat
October	Coos	1 Bat
	Jackson	1 Fox
	Marion	1 Coyote
	Wallowa	1 Skunk



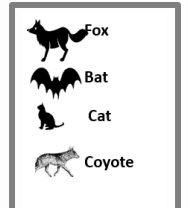
**Oregon
Health
Authority**

**Rabies-positive Animals
Oregon, 2018**



Updated: July, 2018

Month	County	Species
May	Crook	Bat
June	Washington	Bat
	Josephine	Bat
	Benton	Bat
July	Linn	Bat
	Benton	Bat
	Jackson	Bat
	Tillamook	Bat
	Linn	Bat



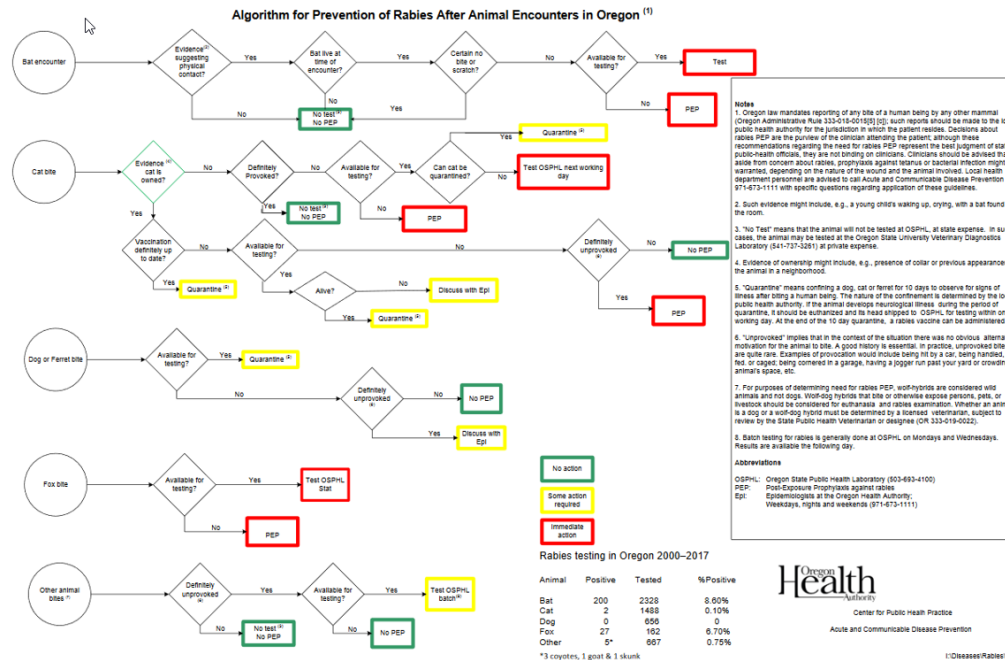
**Oregon
Health
Authority**

Orpheus County Feedback Meeting Agenda & Notes

Data for Public Health Policy

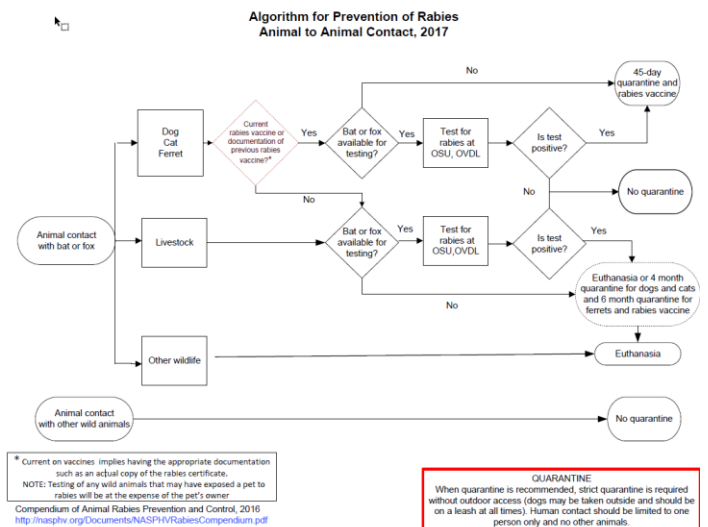
Animal to Human

<https://www.oregon.gov/oha/PH/DISEASESCONDITIONS/DISEASESAZ/RABIES/Documents/alg-animal-people.pdf>




Animal to Animal

<https://www.oregon.gov/oha/PH/DISEASESCONDITIONS/DISEASESAZ/RABIES/Documents/alg-animal-animal.pdf>



Orpheus County Feedback Meeting Agenda & Notes

*Data for Public Health
Policy*

<h2 style="text-align: center;">Animal Testing for Rabies</h2> <div style="display: flex; justify-content: space-between;"> <div style="width: 45%;"> <p><u>OSPHL</u></p> <p>What do we test:</p> <ul style="list-style-type: none"> • Bats • Feral animals biting a 3rd party • Neurological disease feral/stray/no owner <p>What do you need:</p> <ul style="list-style-type: none"> • Need approval from EPI • Create a Animal bite case in Orpheus • (DO NOT CREATE A HUMAN CASE OF RABIES) • Include ORPHEUS ID number in the requisition form <p>What we do:</p> <ul style="list-style-type: none"> • We email OSPHL approval to test • Not approved – not tested! </div> <div style="width: 45%;"> <p><u>OSU, VDL – 541-737-3261</u></p> <ul style="list-style-type: none"> ❖ Animal to animal contact ❖ Owned animal (owner bitten by own animal and wants to test) ❖ Found a bat- wants to test no human contact </div> </div> <div style="text-align: right; margin-top: 20px;">  </div>		
<p>1st Wednesday Training Webinars (10:30 to 11:30):</p> <ul style="list-style-type: none"> - September 5th – County Review Tool update - Any new user training needs? Intermediate? Other topics 		
<p>Future Meetings: 3rd Thursdays @ 1:30 PM</p> <p>September 13th, 2018</p> <p>October 11th, 2018</p>		