

COVID-19 Weekly Report

Oregon's Weekly Surveillance Summary
Novel Coronavirus (COVID-19)



Oregon Public Health Division

Published June 10, 2020

Background

COVID-19 Weekly Report data will be finalized every Sunday at 11 p.m. PDT, and the report will be published on Wednesday. **Please note that the data reported here are continually being updated. For daily up-to-date information visit the [OHA COVID-19 web page](#).**

As of 11 p.m. on Sunday, June 7, there have been 4,922 cases of COVID-19 reported to the Oregon Health Authority. Of these cases, 147 (3.0%) are presumptive cases. Presumptive cases are people without a positive PCR test who have COVID-19-like symptoms and had close contact with a confirmed case. Though not confirmed by a positive diagnostic test, presumptive cases have a high likelihood of having COVID-19 because of the specific nature of the symptoms and known exposure. Presumptive cases are encouraged to seek testing to confirm that they do have COVID-19. Presumptive cases who test positive are recategorized as confirmed cases.

Not all cases have been interviewed at the time of this report. These data represent a snapshot of COVID-19 risk factors, clinical and demographic characteristics and include data on cases with pending investigations. The data shown in this report come from Orpheus, which is an electronic disease surveillance system for reportable diseases for the state of Oregon.

During the week of June 1–7, 18,271 persons were tested for COVID-19 in Oregon and 2.9% of those people had a positive result. These represent tests done at all locations, including commercial non-hospital-based laboratories, hospital laboratories and Oregon State Public Health Laboratory. At present, Oregon has the capacity to test 3,150 specimens per day (22,050 per week) at Oregon State Public Health Laboratory and clinical labs in the state. Reported testing is well below capacity, considering that this figure does not include the unknown additional capacity for testing by commercial laboratories.

Please note the original version of this document posted on June 10, 2020 omitted ZIP code 97078. This version includes ZIP code 97078. OHA apologizes and thanks readers who brought the errors to attention.

Weekly Report Summary

During the week from Monday, June 1, through Sunday, June 7, OHA recorded 620 new cases of COVID-19 infection, a 75% increase from the previous week (353 new cases). In addition, 10 Oregonians were reported to have died. Statewide, cumulative reported COVID-19 cases have reached 4,922 (11.4 cumulative cases per 10,000 Oregonians) and 164 people (0.4 cumulative deaths per 10,000 Oregonians) are known to have died with COVID-19 since the beginning of the outbreak.

Newly reported COVID-19 cases increased by 75% during the week ending June 7 after increasing by 18% during the previous week. The number of COVID-19 tests* reported (18,271) increased only slightly compared to the preceding week while the percent positive rose from 1.9% to 3.0%. The number of new infections reported daily approached levels seen during the heights of the outbreak. Fortunately, hospitalizations and deaths are far below their peaks, and the percentage of emergency department visits for COVID-19-like illness remain below 1%.** Large workplace outbreaks (Table 6) account for much of the recent increase, however some counties without large outbreaks have also experienced increases.

We are watching these trends closely as much of Oregon continues to reopen. OHA and local public health authorities have strengthened their workforce and infrastructure to ensure increased case investigation, contact tracing and support for people who need to isolate or quarantine. State and local officials will continue to

Data are provisional and subject to change.

Page 1 of 19

COVID-19 Weekly Report

Oregon's Weekly Surveillance Summary
Novel Coronavirus (COVID-19)



Oregon Public Health Division

Published June 10, 2020

emphasize the critical importance of maintaining physical distance, limiting in-person gatherings and wearing face coverings where physical distancing is difficult or impossible.

Table 5 lists active clusters of three or more cases or one or more death in care facilities, senior living communities, and other congregate living setting. Fourteen facilities (one more than last week) have active clusters, involving over 201 total patients (up from 178) patients.

Recent data on mortality in Oregon, including deaths related to COVID-19, are available at <https://public.tableau.com/profile/oha.center.for.health.statistics#!/>

*Includes polymerase chain reaction (PCR) for viral RNA. Does not include antibody tests or tests for viral proteins known as antigen tests.

**<https://public.tableau.com/profile/oregon.health.authority.covid.19#!/vizhome/OregonCOVID-19PublicHealthIndicators/COVID-19Burden>

Clinical Characteristics, Risk Factors and Demographic Characteristics

Figure 1 provides information on signs and symptoms from all COVID-19 cases. Of all 4,922 cases, 79.9% (n=3,898) reported having signs and symptoms of COVID-19. The two most commonly reported symptoms are cough (n=2,959, 60.1%) and headache (n=2,261, 45.9%). Figure 2 provides information on risk factors from all COVID-19 cases. The two most common risk factors are having contact with a known COVID-19 case prior to symptom onset (n=3,055, 62.1%) and having underlying medical conditions (n=2,573, 52.3%). It is important to note that each person may report more than one sign/symptom or risk factor.

COVID-19 Weekly Report

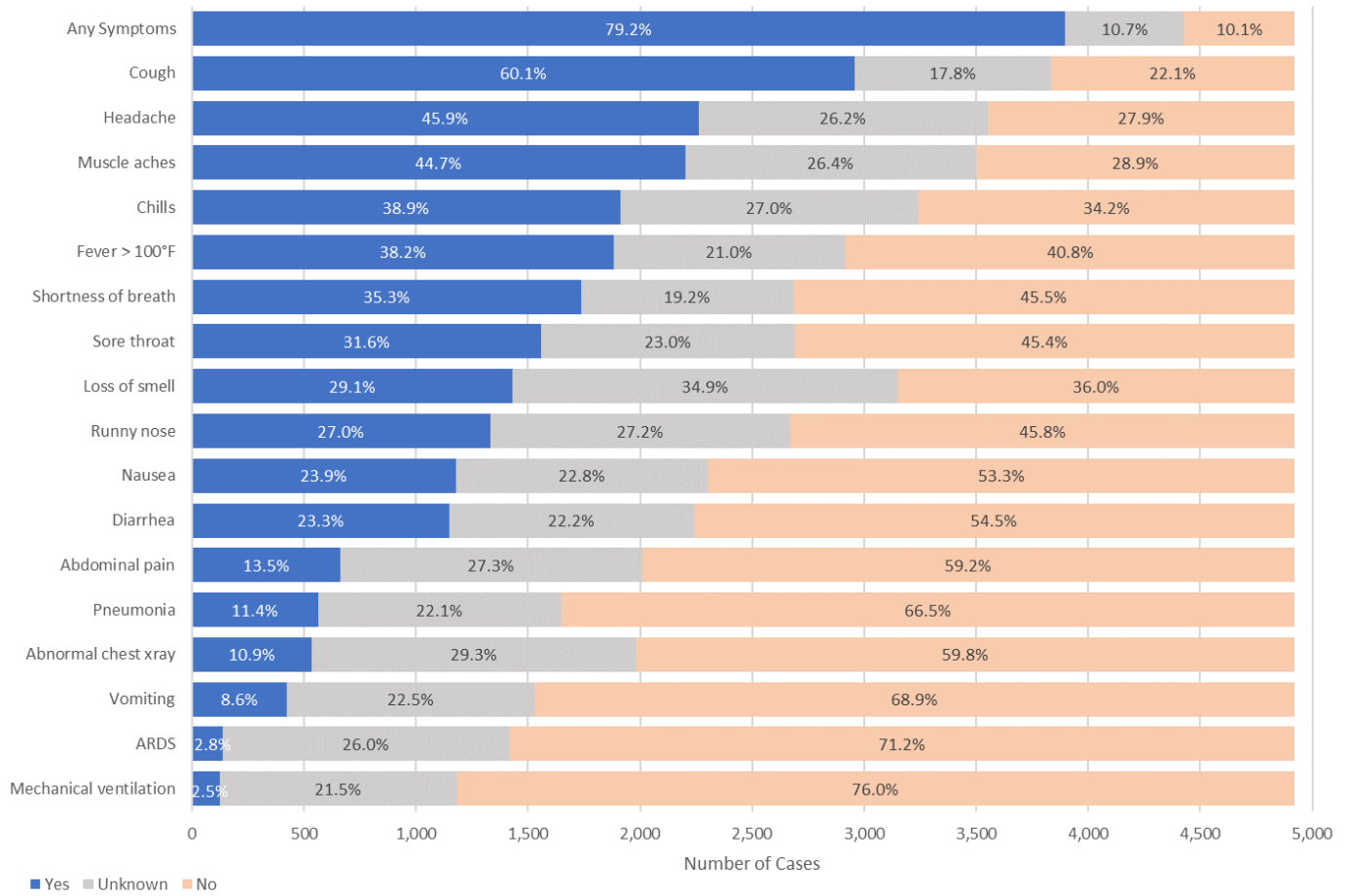
Oregon's Weekly Surveillance Summary
Novel Coronavirus (COVID-19)



Oregon Public Health Division

Published June 10, 2020

Figure 1. Reported signs and symptoms for all confirmed COVID-19 cases (n=4,922)



COVID-19 Weekly Report

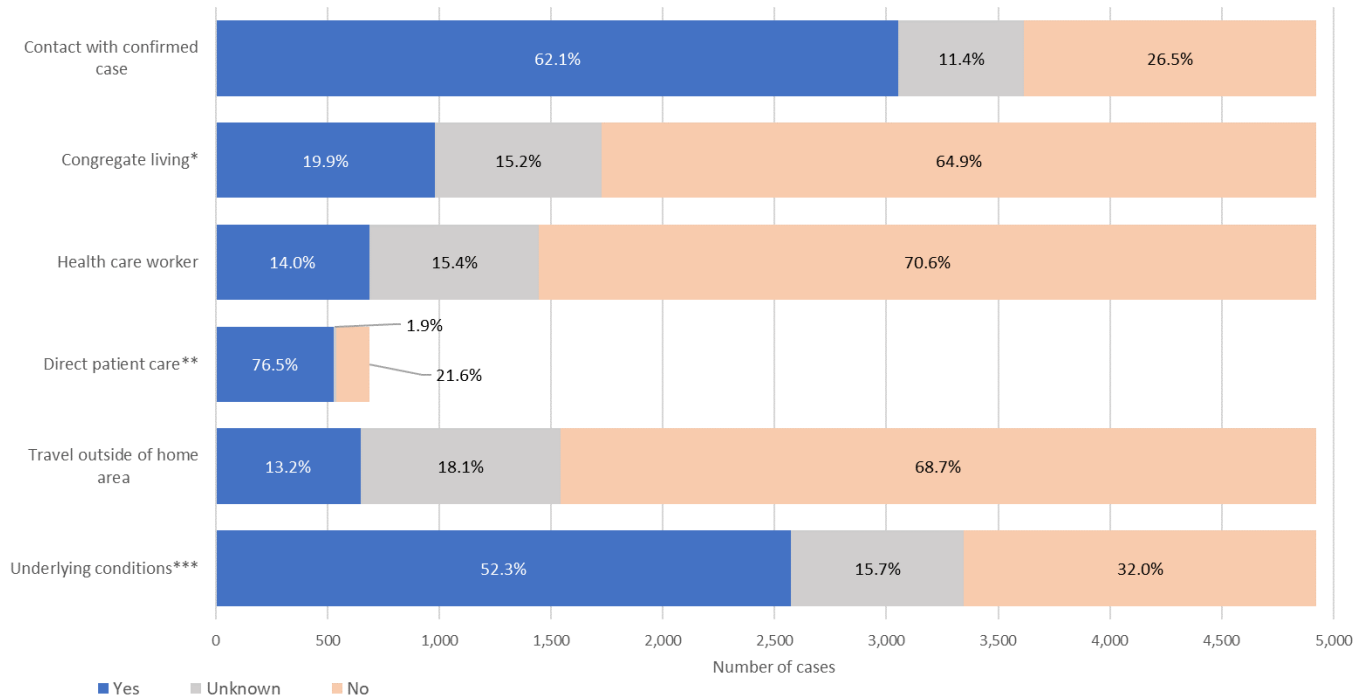
Oregon's Weekly Surveillance Summary
Novel Coronavirus (COVID-19)



Oregon Public Health Division

Published June 10, 2020

Figure 2. Reported risk factors from all COVID-19 cases (n=4,922)



*Congregate living situations include, but are not limited to, long-term care facilities, group homes, prisons, and shelters. Data include people with confirmed cases who live or work in congregate living situations.

**Direct patient care is only asked if a case is a healthcare worker or volunteer. The denominator is the number of healthcare workers or volunteers.

***Underlying medical conditions include cardiovascular disease, chronic liver disease, chronic lung disease, chronic renal disease, current or former smoker, diabetes mellitus, immunocompromised condition, neurologic and neurodevelopmental conditions, obesity, or other chronic diseases.

The following tables show the demographic characteristics for all COVID-19 cases. Table 1 and 2 shows case demographic distribution. Tables 3 and 4 show race and ethnicity respectively.

Table 1. Severity and rates of COVID-19 by sex (n=4,922)

Sex	Cases	% of total cases	Cases per 10,000 ^a	Hospitalized	Deaths	Case fatality (%)
Male	2,382	48.4%	11.1	450	94	3.9%
Female	2,534	51.5%	11.8	393	70	2.8%
Non-Binary	1	0%	n/a	0	0	0%
Not available	5	0%	n/a	0	0	0%
Total	4,922	100.0%	11.6	843	164	3.3%

^aPopulation data were compiled from the 2019 Annual Oregon Population Report which is produced by the Population Research Center, Portland State University

COVID-19 Weekly Report

Oregon's Weekly Surveillance Summary
Novel Coronavirus (COVID-19)



Oregon Public Health Division

Published June 10, 2020

Table 2. Severity and rates of COVID-19 by age group (n=4,922)

Age group	Cases	% of total cases	Cases per 10,000 ^a	Hospitalized	Deaths	Case fatality (%)
0–9	96	2.0%	2.0	8	0	0%
10–19	222	4.5%	4.5	4	0	0%
20–29	854	17.4%	15.4	41	0	0%
30–39	850	17.2%	14.7	61	1	0%
40–49	849	17.2%	15.6	102	3	0.4%
50–59	806	16.4%	15.1	147	8	1.0%
60–69	595	12.1%	11.0	184	34	5.7%
70–79	378	7.7%	11.1	172	46	12.2%
80+	272	5.5%	16.2	124	72	26.5%
Total	4,922	100.0%	11.6	843	164	3.3%

^aPopulation data were compiled from the 2019 Annual Oregon Population Report which is produced by the Population Research Center, Portland State University

Table 3. Severity and rates of COVID-19 by race^a (n=4,922)

Race	Cases	% of total cases	Cases per 10,000 ^b	Hospitalized	Deaths	Case fatality (%)
White	2,227	45.2%	6.2	497	124	5.6%
Black	145	2.9%	18.0	31	6	4.1%
Asian	168	3.4%	9.3	40	7	4.2%
American Indian/Alaska Native	107	2.2%	22.0	12	3	2.8%
Pacific Islander	96	2.0%	57.8	20	2	2.1%
Other ^c	1,467	29.8%	n/a	188	11	0.7%
>1 race	86	1.7%	4.3	15	2	2.3%
Not available	626	12.7%	n/a	40	9	1.4%
Total	4,922	100.0%	11.6	843	164	3.3%

^aDuring the course of the case investigation, people are asked to self-report their race, ethnicity, tribal affiliation, country of origin, or ancestry.

^bNCHS Population Estimates: National Center for Health Statistics (NCHS), Estimates of the resident population of the US by year, county, age, bridged race, Hispanic origin, and sex (Vintage 2018). 2) Census Bureau Population Estimates: U.S. Census bureau, Population Division, Annual Estimates of the Resident Population by Age, Sex, Race, and Hispanic Origin for counties (Vintage 2018)

^c1,236 of the 1,267 persons who identify as "Other" race also self-identify as Hispanic or Latino.

Table 4. Severity and rates of COVID-19 by ethnicity (n=4,922)

Ethnicity	Case count	% of total cases	Cases per 10,000 ^a	Hospitalized	Deaths	Case fatality (%)
Hispanic	1,703	34.6%	31.3	208	17	1.0%
Non-Hispanic	2,621	53.3%	7.1	595	133	5.1%
Not available	598	12.1%	n/a	40	14	2.3%
Total	4,922	100.0%	11.6	843	164	3.3%

^aNCHS Population Estimates: National Center for Health Statistics (NCHS), Estimates of the resident population of the US by year, county, age, bridged race, Hispanic origin, and sex (Vintage 2018). 2) Census Bureau Population Estimates: U.S. Census bureau, Population Division, Annual Estimates of the Resident Population by Age, Sex, Race, and Hispanic Origin for counties (Vintage 2018)

COVID-19 Weekly Report

Oregon's Weekly Surveillance Summary
Novel Coronavirus (COVID-19)



Oregon Public Health Division

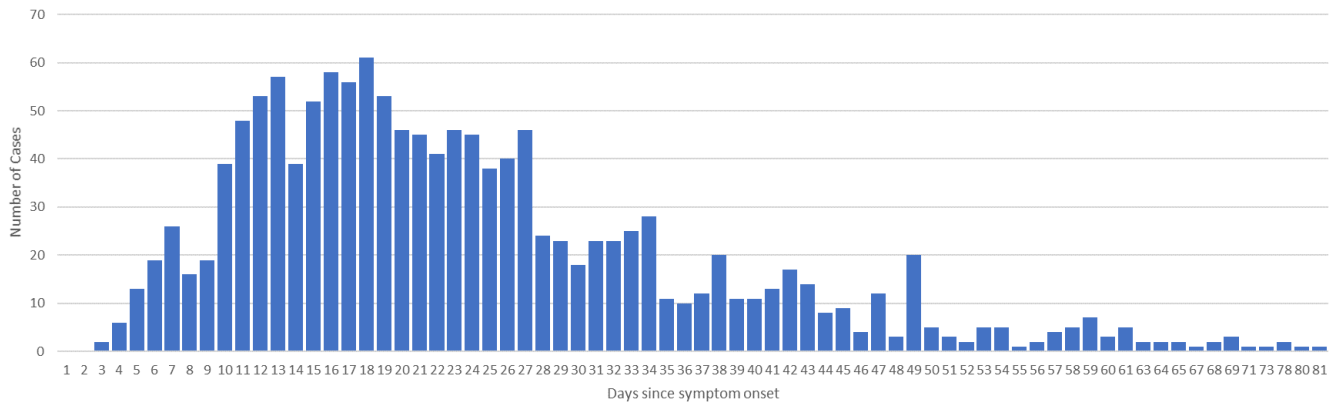
Published June 10, 2020

Recovery

OHA staff periodically call people with reported cases of COVID-19 who experienced fever, cough, shortness of breath or diarrhea and were initially interviewed before May 1, when OHA changed its definition of recovery, to inquire about resolution of symptoms. This group includes 1,882* people who were all diagnosed before mid-April and have not succumbed to their illness. Among these, 1,627 (85.9%) of cases are considered recovered, and a recovery date is available for 1,368 people. It is this group of 1,368 for which recovery times are depicted in Figure 3. Of these 1,882 people, 60 (3.2%), have yet to recover, and current recovery status is not yet available for 195 (10.3%) of these cases. People are assumed to have recovered three days after resolution of all symptoms. The median time to recovery among non-hospitalized symptomatic cases is presently 20 days (interquartile range: 15–29 days); among symptomatic cases who were hospitalized it is 25 days (interquartile range: 18–37 days).

*Case counts have decreased from 1894 to 1882. This is because this case count excludes people who have died. Onsets may also have been updated when OHA staff call and ask them about their illness

Figure 3. Time to recovery* among symptomatic people** with confirmed COVID-19 (n=1,368)



*Three days after reported resolution of diarrhea, cough, shortness of breath and fever.

**Includes cases who were interviewed about their date of recovery before a change in recovery definition on May 1

COVID-19 Weekly Report

Oregon's Weekly Surveillance Summary
Novel Coronavirus (COVID-19)



Oregon Public Health Division

Published June 10, 2020

Weekly Care Facility, Senior Living Communities and Congregate Living Settings Report

OHA is publishing data on cases and deaths in care facilities, senior living communities, and congregate living settings that have three or more confirmed COVID-19 cases or one or more death. Facilities with outbreaks that are considered closed are removed from this list. An outbreak is considered closed if there are no new cases identified for 28 days after the last case onset. This list does not include correctional facilities.

In addition to the facilities listed, OHA is aware of three adult foster homes that have three or more confirmed COVID-19 cases or one or more death. Because foster homes typically have relatively few residents, OHA follows the Oregon Department of Human Services practice in not naming these locations to protect privacy.

To date, there has been 1 COVID-19 death of a staff person who worked in a congregate care setting. To protect patient privacy, OHA does not report employee deaths by workplace or other potentially identifying information. Similar information will only be released in the future in weekly reports if OHA determines that such information, in addition to other information it releases, and information released by other agencies, like the Centers for Medicaid and Medicare, cannot be used to identify an individual.

Table 5. Care facility, senior living community and congregate living setting outbreaks with three or more confirmed COVID-19 cases or one or more COVID-19 related death (n=14)

Facility name	County	First reported	Total cases ^a	Total deaths ^a
Avamere at Bethany	Washington	4/1/2020	12	1
Prestige Senior Living Orchard Heights	Polk	4/30/2020	56	10
Prestige Senior Living Riverwood	Washington	5/2/2020	11	1
Jennings - McCall Center	Washington	5/4/2020	7	1
Parkview Christian Assisted Living	Multnomah	5/4/2020	9	0
Odd Fellows Home	Multnomah	5/4/2020	9	1
Prestige Post Acute Care and Rehabilitation-Milwaukie	Clackamas	5/9/2020	11	1
Avamere Park Place	Washington	05/26/2020	6	0
High Lookee Lodge	Jefferson	05/26/2020	15	0
Bethesda Lutheran Communities	Washington	05/28/2020	3	0
Boone Ridge Senior Living	Marion	05/31/2020	3	0
The Springs at Willow Creek	Marion	06/02/2020	15	1
Regent Court Memory Care	Benton	06/02/2020	5	0
Marquis Hope Village	Clackamas	06/04/2020	39	1
Total	-	-	201	17

^aTotal case count includes all cases associated with the outbreak (e.g., staff, residents, close contacts)

COVID-19 Weekly Report

Oregon's Weekly Surveillance Summary
Novel Coronavirus (COVID-19)



Oregon Public Health Division

Published June 10, 2020

Weekly Workplace Outbreak Report

OHA is publishing data on cases in workplace outbreaks. A workplace outbreak is defined as two or more COVID-19 cases that work in the same location, have an epidemiologic link and have symptom onset or positive test within 14 days of each other. Any suspected workplace outbreak is required to be reported to the local public health authority (see OAR 333-018-015). Local health department and tribal partners conduct ongoing public health investigations to identify workplace outbreaks. This list of outbreaks will be updated as investigations continue, and we learn about epidemiologic links between cases. This list may not reflect all the workplace outbreaks in Oregon.

In order to protect privacy, OHA is only reporting workplace outbreaks with 5 or more cases and only for workplaces where there are at least 30 employees. If more than 50% of the employees are COVID-19 cases, then we will not report specific case numbers. Case counts include all persons linked to the outbreak, which may include household members and other close contacts. The list below includes active workplace outbreaks (Table 6), meaning that there has been a case within the past 28 days. Outbreaks that are resolved will be moved to a separate table of resolved outbreaks (Table 7).

The presence of correctional facilities and food packing and agricultural worksites on this list highlights the challenges of controlling COVID-19 in settings where people must work or live in close proximity. In addition, people of color are overrepresented in agricultural and correctional settings, perhaps contributing to higher rates of COVID-19 observed in these groups. OHA publishes these data in response to public request, but with some concern that workers or staff members at these workplaces might be subject to discrimination.

State and local public health officials work intensively with staff at workplaces where outbreaks are identified to isolate sick workers, test and quarantine those who have been exposed and implement workplace changes to reduce risk of transmission. Unless otherwise noted, public health officials have determined that these workplaces, their employees and their products do not pose significant risk to the public. Employees of a business with a workplace outbreak should never be subjected to discrimination or excluded from patronizing other businesses. In fact, discriminating against employees or avoiding products might jeopardize the economic viability of essential local businesses.

Employers can support their employees with policies that make sure that ill workers are not in the workplace and are not penalized for taking sick leave. Employers should ensure that workers are aware of and understand these policies.

There have been 7 COVID-19 deaths associated with the workplace outbreaks below. To protect patient privacy, OHA does not report employee deaths by workplace.

COVID-19 Weekly Report

Oregon's Weekly Surveillance Summary
Novel Coronavirus (COVID-19)



Oregon Public Health Division

Published June 10, 2020

Table 6. Active Workplace outbreaks with five or more confirmed COVID-19 cases (n=24)

Workplace	Address	County ^a	Investigation start date	Most recent onset	Total cases
Oregon State Penitentiary	2605 State St, Salem, OR 97310	Marion	4/2/2020	5/27/2020	167
Pacific Seafood	213 SW Bay Blvd, Newport, OR 97365	Lincoln	6/2/2020	6/4/2020	127
Townsend Farms	23303 NE Sandy, Fairview, OR 97024	Multnomah	5/25/2020	5/24/2020	56
Duckwall Fruit	3430 Davis Dr. Hood River, OR 97031	Hood River	5/28/2020	5/30/2020	45
Bob's Red Mill	5000 SE International Way, Milwaukie, OR 97222	Clackamas	5/27/2020	6/1/2020	40
VA Medical Center	3710 SW US Veterans Hospital Rd, Portland, OR 97239	Multnomah	5/7/2020	5/13/2020	34
Bornsteins Seafood	9 Portway St, Astoria, OR 97103	Clatsop	5/2/2020	5/13/2020	33
Medelez Trucking	30522 Old Field Street, Hermiston OR 97838	Umatilla	4/29/2020	5/30/2020	23
Old Trapper	4071 24th Ave, Forest Grove, OR 97116	Washington	4/13/2020	5/16/2020	15
Pacific Seafood	450 NE Skipanon Dr, Warrenton, OR 97146	Clatsop	5/8/2020	5/14/2020	15
Santiam Correctional Institute	4005 Aumsville Hwy SE, Salem, OR 97317	Marion	4/3/2020	5/15/2020	14
Townsend Farms	33865 NW Vadis Rd, Cornelius OR 97113	Washington	5/25/2020	6/2/2020	14
Reser's Food	6999 NE Century Blvd, Hillsboro, OR 97124	Washington	4/16/2020	5/30/2020	12
Norpac	2498 Madrona Ave SE, Salem, OR 97301	Marion	6/5/2020	5/29/2020	8
Dave's Killer Bread	5209 SE International Way, Milwaukie, OR 97222	Clackamas	5/2/2020	5/7/2020	7
Meduri Farms	12375 Smithfield Road, Dallas, OR 97338	Polk	5/25/2020	5/19/2020	7
Chaucer Foods	2238 Yew St, Forest Grove, OR 97116	Washington	5/31/2020	6/1/2020	7
Fred Meyer	14700 SE McLoughlin Blvd, Milwaukie, OR 97267	Clackamas	6/3/2020	5/31/2020	6
Fresh Del Monte	9243 N Rivergate Blvd, Portland, OR 97203	Multnomah	5/22/2020	5/21/2020	6
Salem Hospital	890 Oak Street SE, Salem, OR 97301	Marion	5/27/2020	5/23/2020	6
Amazon Aumsville	4775 Depot Ct SE, Salem, OR 97317	Marion	5/21/2020	5/22/2020	6
Good Shepherd Hospital	610 NW 11th St, Hermiston, OR 97838	Umatilla	5/21/2020	5/20/2020	5
Electronic Assemblers	616 Industrial St # 30, Hood River, OR 97031	Hood River	6/1/2020	5/30/2020	5
Amazon Fulfilment Center	1250 NW Swigert Rd, Troutdale, OR 97060	Multnomah	5/21/2020	6/3/2020	5

^aCounty of workplace. COVID-19 cases may reside in multiple counties

COVID-19 Weekly Report

Oregon's Weekly Surveillance Summary
Novel Coronavirus (COVID-19)



Oregon Public Health Division

Published June 10, 2020

Table 7. Resolved Workplace outbreaks with five or more confirmed COVID-19 cases (n=15)

Workplace	Address	County ^a	Investigation start date	Most recent onset	Total cases
Townsend Farms	23303 NE Sandy, Fairview, OR 97024	Multnomah	4/30/2020	5/12/2020	51
National Frozen Foods	745 30th Ave SW, Albany, OR 97322	Linn	4/15/2020	5/10/2020	41
Shutter Creek Correctional Institute	95200 Shutters Landing Ln, North Bend, OR 97459	Coos	4/7/2020	5/5/2020	28
Adventist Hospital	10123 SE Market St, Portland, OR 97216	Multnomah	5/7/2020	5/9/2020	10
Oregon Health and Sciences University	3181 S.W. Sam Jackson Park Rd, Portland, Oregon 97239	Multnomah	4/8/2020	4/11/2020	10
Physicians Building Group	1234 Commercial St SE, Salem, OR 97302	Marion	3/24/2020	3/24/2020	7
Amstad Produce, Inc.	16300 SW 192nd Ave, Sherwood, OR 97410	Washington	4/26/2020	5/1/2020	7
Pacific Motion Furniture	21249 SW 115th Ave, Tualatin, OR 97062	Washington	4/29/2020	4/20/2020	7
Cherriots Bus Service	555 Court St NE, Salem, OR 97301	Marion	3/30/2020	3/27/2020	6
Hospital Service Corporation	18440 NE Portal Way, Portland, OR, 97230	Multnomah	4/3/2020	4/4/2020	6
Timber Products Company	25 E McAndrews Rd, Medford, OR 97501	Jackson	4/11/2020	4/3/2020	6
BrucePac in Silverton	811 N First St, Silverton, OR 97381	Marion	5/11/2020	5/3/2020	6
MacLaren Youth Correctional Facility	2630 N Pacific Hwy, Woodburn, OR 97071	Marion	5/5/2020	5/11/2020	5
Wong's Potatoes	17600 Highway 39 Klamath Falls, Klamath Falls, OR 97603	Klamath	4/20/2020	4/20/2020	5
Fjord Limited	3099 N Pacific Highway, Woodburn, OR 97071	Marion	5/5/2020	4/28/2020	5

^aCounty of workplace. COVID-19 cases may reside in multiple counties

COVID-19 Weekly Report

Oregon's Weekly Surveillance Summary
Novel Coronavirus (COVID-19)



Oregon Public Health Division

Published June 10, 2020

Weekly COVID-19 Hospitalizations

OHA is publishing data on the number of COVID-19 hospitalizations by hospital in the prior week; data are from Oregon's hospital capacity web system, HOSCAP. Table 8 lists all hospitals which, at some time during the week reported, had 10 or more suspected or confirmed COVID-19 patients. The left column shows the highest number of suspected and confirmed COVID-19 hospitalized patients for each hospital between 6/1/2020 and 6/7/2020. The right column shows the highest number of confirmed COVID-19 patients hospitalized during the same time period.

Table 8. Hospitals reporting 10 or more COVID-19 patients.

Hospital Name	Max Patients	Maximum Confirmed Patients
Salem Health Hospital	23	14
OHSU Hospital	17	<10
Providence Portland Medical Center	15	<10
Providence St. Vincent Medical Center	11	<10

The hospitals listed in Table 9 reported at least one and at most and at most 9 suspected or confirmed COVID-19 patients between 6/1/2020 through 6/7/2020. Hospitals not listed in either table did not report any suspected or confirmed patients during the week.

Table 9. Hospitals reporting 1–9 COVID-19 patients.

Hospital
Adventist Health Portland
Asante Rogue Regional Medical Center
Bay Area Hospital
Good Samaritan Regional Medical Center
Good Shepherd Health Care System
Hillsboro Medical Center
Kaiser Permanente Sunnyside Medical Center
Kaiser Permanente Westside Medical Center
Legacy Emanuel Medical Center
Legacy Good Samaritan Medical Center
Legacy Meridian Park Hospital
Legacy Mount Hood Medical Center
Legacy Silverton Medical Center
McKenzie-Willamette Medical Center
Mercy Medical Center
Mid-Columbia Medical Center
OHSU Doernbecher Children's Hospital
PeaceHealth Sacred Heart Medical Center at Riverbend
Providence Hood River Memorial Hospital
Providence Medford Medical Center
Providence Milwaukie Hospital
Providence Newberg Medical Center
Providence Seaside Hospital
Providence Willamette Falls Medical Center
Randall Children's Hospital at Legacy Emanuel

Data are provisional and subject to change.

COVID-19 Weekly Report

Oregon's Weekly Surveillance Summary
Novel Coronavirus (COVID-19)



Oregon Public Health Division

Published June 10, 2020

Samaritan Albany General Hospital
Samaritan Lebanon Community Hospital
Samaritan North Lincoln Hospital
Samaritan Pacific Communities Hospital
Sky Lakes Medical Center
Southern Coos Hospital and Health Center
St. Anthony Hospital
St. Charles Bend
VA Portland Health Care System
Willamette Valley Medical Center

COVID-19 Weekly Report

Oregon's Weekly Surveillance Summary
Novel Coronavirus (COVID-19)



Oregon Public Health Division

Published June 10, 2020

Cases by ZIP Code

OHA is publishing data on cases at the ZIP code level (Table 10). In order to protect patient privacy, ZIP codes with small populations or small numbers of cases will be aggregated. Cases from ZIP codes with less than 1,000 people will be reported as one number. ZIP codes that have fewer than 10 cases will be reported as "1-9". ZIP codes that do not have any cases will have a "0". ZIP code population was retrieved from the 2010 US Census Bureau ZIP Code Tabulation Area.

Table 10. COVID-19 cases by ZIP code

ZIP code	Frequency	Cases per 10,000
97002	1-9	n/a
97003	37	14.3
97004	1-9	n/a
97005	37	14.9
97006	54	8.6
97007	56	8.4
97008	18	6.2
97009	1-9	n/a
97013	64	28.2
97014	1-9	n/a
97015	20	10.2
97016	0	0.0
97017	1-9	n/a
97018	0	0.0
97019	1-9	n/a
97021	0	0.0
97022	0	0.0
97023	1-9	n/a
97024	89	86.9
97026	47	123.2
97027	11	9.1
97030	91	24.8
97031	51	27.8
97032	27	53.5
97034	1-9	n/a
97035	1-9	n/a
97038	34	22.5
97040	1-9	n/a
97041	1-9	n/a
97042	1-9	n/a
97045	36	7.0
97048	1-9	n/a
97049	0	0.0
97051	1-9	n/a

COVID-19 Weekly Report

Oregon's Weekly Surveillance Summary
Novel Coronavirus (COVID-19)



Oregon Public Health Division

Published June 10, 2020

97053	1-9	n/a
97054	0	0.0
97055	19	11.0
97056	1-9	n/a
97058	32	16.1
97060	43	20.3
97062	37	13.5
97063	0	0.0
97064	1-9	n/a
97067	0	0.0
97068	11	3.9
97070	21	10.0
97071	219	76.0
97078	44	20.5
97080	84	20.5
97086	32	12.3
97089	1-9	n/a
97101	1-9	n/a
97103	23	13.6
97106	1-9	n/a
97107	0	0.0
97110	0	0.0
97111	0	0.0
97112	0	0.0
97113	72	50.9
97114	1-9	n/a
97115	1-9	n/a
97116	92	38.2
97119	1-9	n/a
97121	1-9	n/a
97123	117	26.3
97124	55	11.4
97127	1-9	n/a
97128	36	10.0
97131	1-9	n/a
97132	30	10.6
97133	1-9	n/a
97136	0	0.0
97137	0	0.0
97138	1-9	n/a
97140	20	8.5
97141	1-9	n/a
97146	13	22.0

Data are provisional and subject to change.

Page 14 of 19

COVID-19 Weekly Report

Oregon's Weekly Surveillance Summary
Novel Coronavirus (COVID-19)



Oregon Public Health Division

Published June 10, 2020

97148	1-9	n/a
97201	14	9.0
97202	27	7.0
97203	61	19.7
97204	1-9	n/a
97205	1-9	n/a
97206	48	10.1
97209	17	11.4
97210	1-9	n/a
97211	32	10.2
97212	15	6.2
97213	41	14.0
97214	43	18.1
97215	12	7.3
97216	20	12.8
97217	40	12.7
97218	15	10.3
97219	36	9.3
97220	54	19.0
97221	1-9	n/a
97222	45	12.9
97223	63	13.5
97224	28	9.0
97225	24	9.9
97227	1-9	n/a
97229	34	5.8
97230	93	23.4
97231	1-9	n/a
97232	1-9	n/a
97233	110	27.9
97236	208	56.4
97239	1-9	n/a
97266	65	19.5
97267	34	11.0
97301	130	24.3
97302	58	15.6
97303	86	22.2
97304	75	26.4
97305	121	30.1
97306	44	16.1
97317	63	25.9
97321	36	14.4
97322	40	11.8

COVID-19 Weekly Report

Oregon's Weekly Surveillance Summary
Novel Coronavirus (COVID-19)



Oregon Public Health Division

Published June 10, 2020

97324	0	0.0
97325	14	21.2
97327	1-9	n/a
97330	42	10.1
97331	1-9	n/a
97333	1-9	n/a
97338	1-9	n/a
97341	1-9	n/a
97344	0	0.0
97347	1-9	n/a
97348	1-9	n/a
97351	11	10.7
97352	1-9	n/a
97355	39	13.6
97358	0	0.0
97360	1-9	n/a
97361	1-9	n/a
97362	14	32.3
97365	144	134.0
97366	1-9	n/a
97367	1-9	n/a
97368	0	0.0
97370	1-9	n/a
97374	1-9	n/a
97375	1-9	n/a
97376	0	0.0
97378	1-9	n/a
97380	1-9	n/a
97381	36	24.5
97383	21	21.9
97385	14	43.0
97386	1-9	n/a
97389	1-9	n/a
97391	0	0.0
97392	1-9	n/a
97394	1-9	n/a
97396	1-9	n/a
97401	13	3.2
97402	21	4.2
97403	0	0.0
97404	1-9	n/a
97405	10	2.2
97408	1-9	n/a

COVID-19 Weekly Report

Oregon's Weekly Surveillance Summary
Novel Coronavirus (COVID-19)



Oregon Public Health Division

Published June 10, 2020

97411	0	0.0
97415	1-9	n/a
97417	1-9	n/a
97419	0	0.0
97420	1-9	n/a
97423	0	0.0
97424	1-9	n/a
97426	1-9	n/a
97431	0	0.0
97435	0	0.0
97437	0	0.0
97438	0	0.0
97439	1-9	n/a
97442	0	0.0
97443	0	0.0
97444	1-9	n/a
97446	1-9	n/a
97448	1-9	n/a
97449	0	0.0
97452	0	0.0
97454	0	0.0
97455	0	0.0
97456	0	0.0
97457	1-9	n/a
97458	0	0.0
97459	27	19.2
97462	1-9	n/a
97463	0	0.0
97465	0	0.0
97467	1-9	n/a
97469	1-9	n/a
97470	1-9	n/a
97471	1-9	n/a
97477	10	2.7
97478	1-9	n/a
97479	1-9	n/a
97487	1-9	n/a
97488	0	0.0
97495	1-9	n/a
97496	1-9	n/a
97497	0	0.0
97498	0	0.0
97499	0	0.0

COVID-19 Weekly Report

Oregon's Weekly Surveillance Summary
Novel Coronavirus (COVID-19)



Oregon Public Health Division

Published June 10, 2020

97501	15	3.6
97502	15	5.4
97503	10	9.5
97504	14	3.2
97520	10	4.1
97523	1-9	n/a
97524	1-9	n/a
97525	0	0.0
97526	13	3.8
97527	1-9	n/a
97530	0	0.0
97532	0	0.0
97535	1-9	n/a
97537	0	0.0
97538	0	0.0
97539	0	0.0
97540	1-9	n/a
97541	0	0.0
97544	0	0.0
97601	18	8.0
97603	19	6.4
97623	0	0.0
97624	1-9	n/a
97630	1-9	n/a
97632	1-9	n/a
97633	1-9	n/a
97641	0	0.0
97701	38	6.4
97702	37	9.1
97703	15	4.5
97707	1-9	n/a
97708	1-9	n/a
97720	1-9	n/a
97734	1-9	n/a
97738	0	0.0
97739	0	0.0
97741	16	13.4
97753	0	0.0
97754	1-9	n/a
97756	38	11.3
97759	0	0.0
97760	1-9	n/a
97761	38	95.3

COVID-19 Weekly Report

Oregon's Weekly Surveillance Summary
Novel Coronavirus (COVID-19)



Oregon Public Health Division

Published June 10, 2020

97801	1-9	n/a
97813	1-9	n/a
97814	1-9	n/a
97818	12	28.9
97820	0	0.0
97824	0	0.0
97826	0	0.0
97827	0	0.0
97828	1-9	n/a
97836	1-9	n/a
97838	82	32.4
97844	0	0.0
97845	1-9	n/a
97846	0	0.0
97850	1-9	n/a
97862	15	12.9
97865	0	0.0
97868	1-9	n/a
97869	0	0.0
97875	1-9	n/a
97882	28	36.1
97883	0	0.0
97885	0	0.0
97886	1-9	n/a
97913	1-9	n/a
97914	26	13.5
97918	1-9	n/a
Cases with unknown ZIP codes	12	n/a
zip codes with <1000 population or no population data	160	n/a