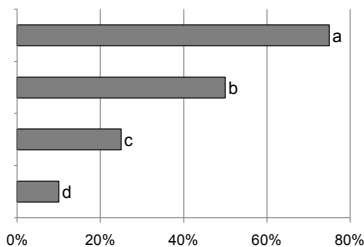


OREGON PUBLIC HEALTH DIVISION • OREGON HEALTH AUTHORITY

**PUBLIFACT: SEPARATING PUBLIC HEALTH-RELATED FACT FROM FICTION**

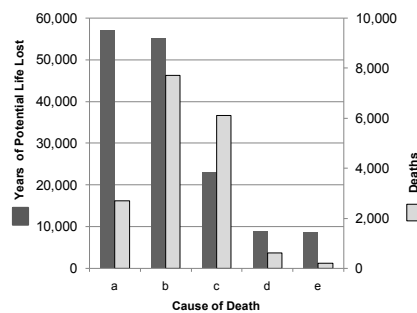
From the arcane to the germane, check your knowledge.

1. Approximately how many babies are born in Oregon every year?  
(a) 25,000 (b) 35,000 (c) 45,000 (d) 55,000
2. Among Oregon children born in 2007, what percentage was breastfed at least 6 months?  
(a) 23% (b) 41% (c) 62% (d) 87%
3. Almost half of all pregnant women in Oregon are served by WIC.  
(a) True (b) False (c) What's WIC?
4. What percentage of 11th graders are sexually active?  
(a) 20%–29% (b) 30%–39% (c) 40%–49% (d) 50%–59% (e) ≥60%
5. How many 8<sup>th</sup> and 11<sup>th</sup> graders consumed alcohol in the past month?  
(a) 5% and 25% (b) 20% and 35% (c) 30% and 60%



6. In the above graph, which bar represents the percentage of Oregon youth that is overweight or obese?
7. What percentage of Oregon's 8<sup>th</sup> and 11<sup>th</sup> graders smoke cigarettes?  
(a) 7% and 12% (b) 11% and 17% (c) 18% and 31%
8. What's the smoking prevalence among Oregon adults?  
(a) 15% (b) 20% (c) 25% (d) 30%
9. The percentage of Oregon adults overweight and obese is...?  
(a) 39% (b) 45% (c) 51% (d) 62%
10. Meanwhile the percentage of Oregon adults with diabetes is.....?  
(a) almost 10% (b) has remained steady (c) has more than doubled since 1990

11. How many people are imprisoned in Oregon?  
(a) 10,000 (b) 14,200 (c) 26,400 (d) 35,600
12. The majority of Oregonians have at least a high school education.  
(a) True (b) False
13. What percentage of Oregon adults has a college degree?  
(a) 25% (b) 29% (c) 34% (d) 38%
14. What percentage of Oregon adults lacks health insurance?  
(a) <10% (b) 11%–15% (c) 16%–20% (d) >20%
15. What is the population of Oregon?  
(a) 2,989,435 (b) 3,857,625 (c) 4,297,232
16. Order these racial/ethnic groups from largest to smallest population for Oregon.  
(a) American Indian or Alaska Native (b) Hispanic/Latino (c) White (d) African American/Black (e) Native Hawaiian/Pacific Islander (f) Asian
17. What proportion of Oregon's population can be said to reside in the Portland Metropolitan Area? (Multnomah, Washington, Clackamas, Columbia and Yamhill counties.)  
(a) 35% (b) 47% (c) 56% (d) 67% (e) People live outside of Portland?



18. In the above graph, cumulative years of potential life lost due to deaths in Oregon during 2010 before age 75 (darker bars) and number of 2010 deaths (lighter bars) are shown for 5 causes of death. See if you can match all of the following labels to the correct letters in the graphic: cancer, injury, heart disease, perinatal conditions, and, liver disease/cirrhosis.

19. What percentage of Oregonians is 65 years of age or older?  
(a) 5% (b) 14% (c) 22% (d) 35%
20. From 1995 through 2010, the rate of hospitalization for heart attack in Oregon...  
a) held steady b) decreased c) increased
21. What percentage of Oregonians live in households below the poverty line?  
(a) 5% (b) 10% (c) 15% (d) 20% (e) 25%
22. In 2011 in Oregon, the most popular name for a baby girl was...  
(a) Sophia (b) Olivia (c) Emma (d) Chevy...or Ford (they're basically the same)

**ANSWERS**

1. (c) During 2011, 45,136 babies were born in Oregon according to Oregon Vital Statistics. <http://1.usa.gov/14jPnJJ>.
2. (c) According to the National Immunization Survey, at 62%, Oregon ranked first among U.S. states for breastfeeding at 6 months for children born during 2007, the most recent year for which such figures are available. [www.cdc.gov/breast-feeding/data/nis\\_data/](http://www.cdc.gov/breast-feeding/data/nis_data/)
3. (a) True. During 2011, 46% of all pregnant women in Oregon were served by the Oregon WIC program. 'WIC' is the Special Supplemental Nutrition Program for Women, Infants and Children, a federal assistance program of the United States Department of Agriculture. <http://1.usa.gov/WWvOQH>
4. (c) Fewer than half (48%) of Oregon 11<sup>th</sup> graders report having ever had sexual intercourse. <http://1.usa.gov/WADRVN>
5. (b) 20% of Oregon 8<sup>th</sup> graders and 35% of Oregon 11<sup>th</sup> graders reported having drunk alcohol during the past 30 days, according to the 2011 Oregon Healthy Teens Survey (OHTT). <http://1.usa.gov/W8MzME>; <http://1.usa.gov/10WXBtk>
6. (c) According to the 2011 OHTT, 21% of Oregon 8<sup>th</sup> graders and 25% of 11<sup>th</sup> graders were overweight or obese. <http://1.usa.gov/WWA5G7>; <http://1.usa.gov/WZcUcA>
7. (a) During 2011, 7% of Oregon 8<sup>th</sup> graders and 12% of Oregon 11<sup>th</sup> graders reported having smoked cigarettes during the past



If you need this material in an alternate format, call us at 971-673-1111.

IF YOU WOULD PREFER to have your CD Summary delivered by e-mail, zap your request to [cd.summary@state.or.us](mailto:cd.summary@state.or.us). Please include your full name and mailing address (not just your e-mail address), so that we can purge you from our print mailing list, thereby saving trees, taxpayer dollars, postal worker injuries, etc.

- 30 days, according to OHTT. <http://1.usa.gov/WAKKq9>; <http://1.usa.gov/XFSE0m>
8. (b) According to the 2011 Behavioral Risk Factor Surveillance System (BRFSS), 20% of adults, or 590,000 Oregonians, smoke cigarettes. (Oregon Tobacco Prevention and Education Program <http://bit.ly/TPEPdirectory>, January 2013.)
9. (d) During 2011, nearly 1.86 million adult Oregonians (62%) were overweight or obese, according to BRFSS. (Oregon Physical Activity and Nutrition Program <http://bit.ly/TPEPdirectory>, January 2013.)
10. (a) and (c) According to the 2011 BRFSS, 9% of Oregon adults (>278,000) reported having diabetes, compared to almost 4% in 1990. Fewer than 1% of Oregon youth under the age of 20 have diabetes, as reported in the National Diabetes Fact Sheet. <http://1.usa.gov/Vzm01N>
11. (b) Just over 14,000 inmates (who may or may not be Oregonians) are currently housed in Oregon prisons, as reported in the October 1, 2012 Oregon Corrections Population Forecast. <http://1.usa.gov/10KX1s>
12. (a) Only 11% of adult Oregonians do not have a high school education, according to the Census Bureau, 2007–2011 American Community Survey 5-Year Estimates (ACS). <http://1.usa.gov/W5f2E1>
13. (b) According to ACS, 29% of adult Oregonians have at least a bachelor's degree. <http://1.usa.gov/W5f2E1>
14. (c) An estimated 17% of Oregonians lacked health insurance in 2010, according to the 2010 BRFSS. <http://1.usa.gov/Wrtt1m>
15. (b) According to the Portland State University Population Research Center. (PSU-PRC) the population of Oregon in 2011 was 3,857,625. <http://bit.ly/WIJQjo>
16. According to the 2011 estimate from the U.S. Census Bureau, Oregon's racial/ethnic population from largest to smallest is c—White (78.1%); b—Hispanic/Latino (12%); f—Asian (3.9%); d—African American (2%); a—American Indian or Alaska Native (1.8%); e—Native Hawaiian/Pacific Islander (0.4%). <http://1.usa.gov/UqS9JO>
17. (b) According to 2011 estimates from PSU-PRC, 47% of Oregon's population resides in the Portland Metropolitan Area. <http://bit.ly/WIJQjo>
18. (a— injury, b— cancer, c— heart disease, d— liver disease/cirrhosis, e— perinatal conditions) Because leading causes of death vary by age, mortality rates by underlying cause alone do not reflect the full societal impact of premature death. Cancer and heart disease were the leading causes of death, but injury deaths account for the most years of potential life lost. During 2010, 224,366 years of potential life were lost before age 75 years among Oregon residents. <http://public.health.oregon.gov/About/Documents/oregon-state-health-profile.pdf> (p20)
19. (b) According to 2011 estimates from PSU-PRC, 14% of Oregon's population is ≥65 years of age. <http://bit.ly/WIJQjo>
20. (b) During 2010, there were 3,667 hospitalizations for heart attack in Oregon. The rate of heart attack hospitalizations has decreased during the past 15 years from approximately 225 to approximately 75 hospitalizations per 100,000 persons aged 18–74 years, likely due to a combination of improved cardiac care, as well as a decrease in tobacco use. <http://public.health.oregon.gov/About/Documents/oregon-state-health-profile.pdf> (p 27)
21. (c) According to 2007–2011 estimate from U.S. Census Bureau 15% of Oregon's population lived in households below the poverty level. <http://1.usa.gov/UqS9JO>
22. (a) Oregon Birth Certificates indicate that 272 girls born during 2011 were named Sophia. Sophia and Emma have been among the top three for several years. <http://1.usa.gov/WZrgtv>

SCORE<sup>1</sup>

- >18: Terrific, radiant, and humble
- 16–18: Magnificent
- 11–15: Imminently about to blossom
- 5–10: Normocephalic and nonfelonious
- 3–5: Present and fully continent of all excreta
- <3: Eukaryotic and possibly diploid

REFERENCES

1. Schneiderman H. Le Mot Juste. JAMA. 1988;259:87.

Nationwide shortage of INH and Tuberculin

There are nationwide shortages of isoniazid (INH) and Tubersol®.

Oregon has been impacted. For information on alternate treatment regimens and screening strategies for latent TB infections see:

<http://healthoregon.org/tb>