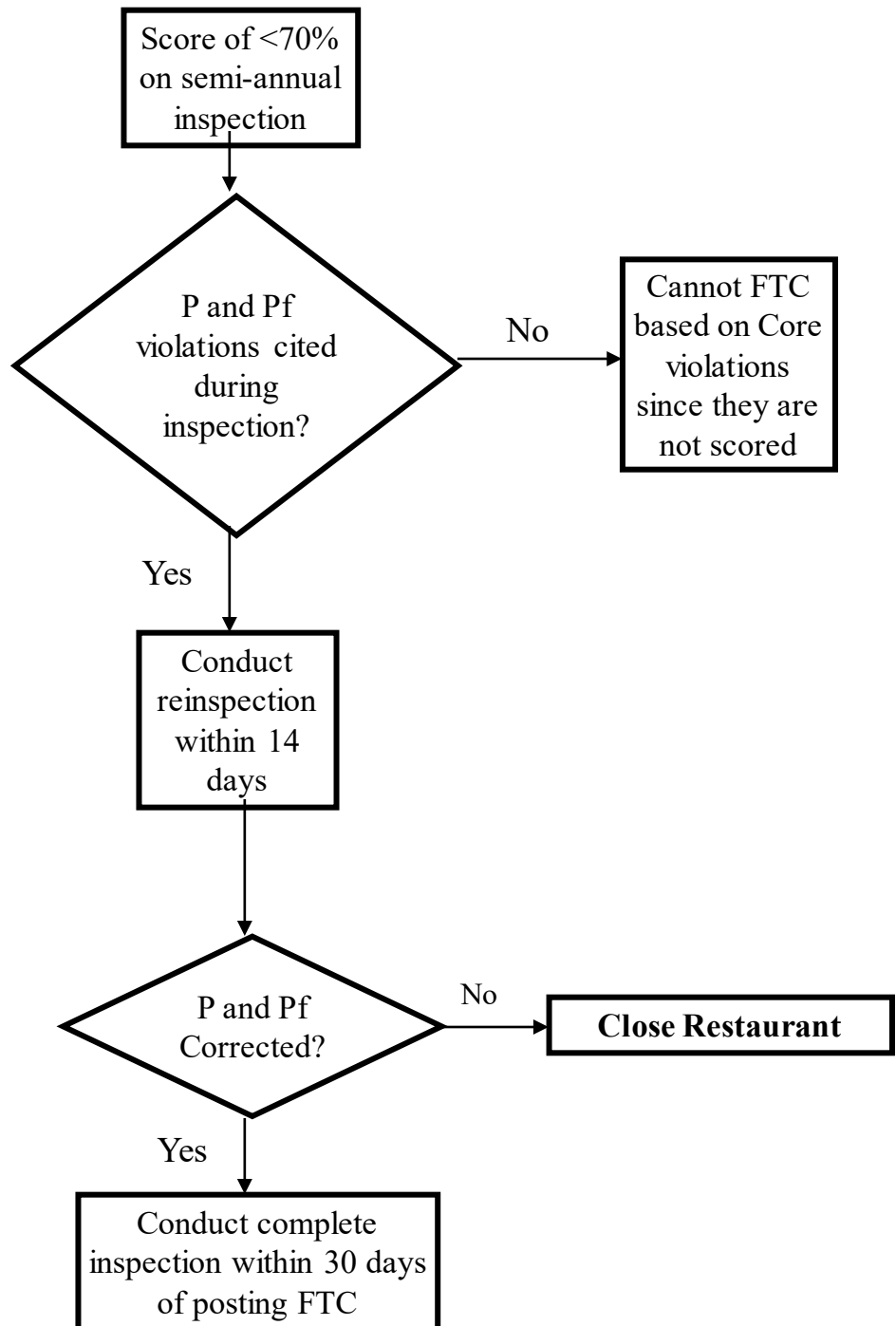


FAIL TO COMPLY (FTC) PROCEDURES



NOTE:

- Facilities that Fail to Comply on their 30-day complete inspection may be closed.
- Facilities that Fail to Comply on two consecutive semi-annual inspections may **not** be closed.
- Repeat points are for consecutive semi-annual or consecutive quarterly inspections only. Do **not** double points during the 30-day complete inspection following a Fail to Comply. Points that were doubled during the semi-annual keep the same value if documented on the complete inspection.