

---

# What do the data mean for human health?

[Ehap.info@state.or.us](mailto:Ehap.info@state.or.us)

**Health**  
Oregon  
Authority

ENVIRONMENTAL PUBLIC HEALTH ASSESSMENT PROGRAM (EHAP)

[www.healthoregon.org/ehap](http://www.healthoregon.org/ehap)

---

# Overview

- OHA's role
- Short-term health risks
- Long-term health risks → Public Health Assessment
- Next steps

# AGENCY ROLES



Advise  
Analyze  
Make  
recommendations



Monitor  
Permit  
Regulate

# Short-term health risks



- No short-term risk for chemical exposures from air data collected around PCC.

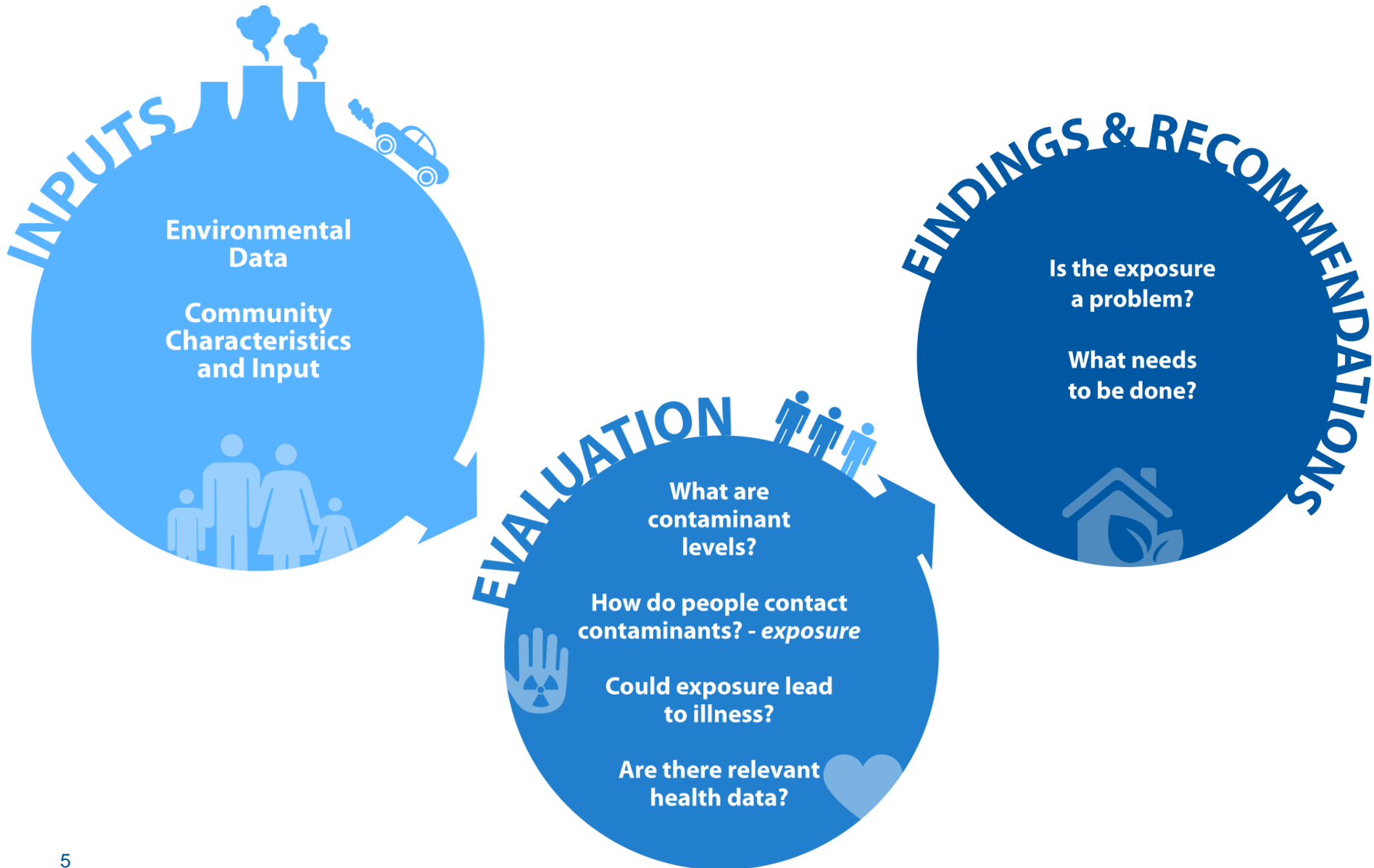


- No short-term risk for chemical exposures from soil sampled around PCC.



- No short-term risk for chemical exposures from Johnson Creek. Bacterial levels pose potential risks

# What is a Public Health Assessment??



# Screening values

- Identifies contaminants of concern for further investigation
- Eliminates contaminants that don't pose health risks
- PHA uses values established by ATSDR



# What data will be considered in the PHA?



- PCC groundwater monitoring wells
- City of Milwaukie DW
- PCC Stormwater
- City of Portland Johnson Creek Surface Water
- PCC & DEQ Sediment



- DEQ Soil Sampling



- USFS Moss
- DEQ Air monitoring
- PCC Reported Toxic Release Inventory

# PHA Timeline

