
**Welcome to the
Maternal Infant Early Childhood
Home Visiting (MIECHV)
Oregon Local Implementing
Agency Meeting 2018**



MATERNAL AND CHILD HEALTH
Public Health Division

Announcements

- Schedule for the Day
- Training Materials
- Evaluations
- Networking!

Expectations &

Contributions

- Increase your knowledge and skills in each topic
- Work on the CQI project
- Learn something new
- New strategies for working with families
- Understand expectations
- Make and build connections

- Expertise
- Experience
- Compassion
- Creativity
- Passion
- Empathy
- Understanding
- Patience
- Humor
- Listening skills
- Relationships
- Focus
- Curiosity

Oregon MIECHV Staff



Lari Peterson

Home
Visiting
Manager



**Benjamin
Hazelton**

Home Visiting
Policy &
Systems
Coordinator



**Ramila
Bhandari**

Administrative
Specialist



Tina Kent

Data Manager



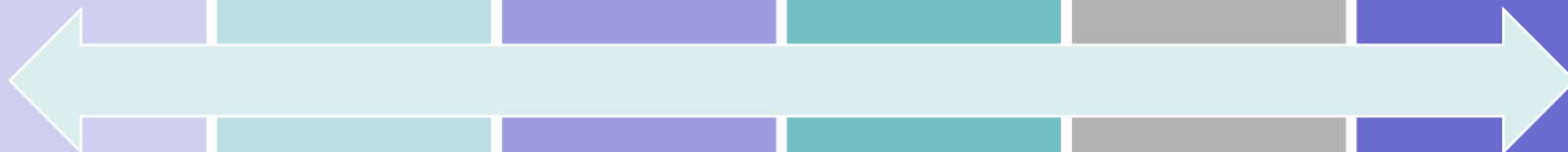
**Kerry
Cassidy-
Norton**

Workforce
Development
Coordinator



**Drewallyn
Riley**

CQI
Coordinator



MIECHV Overview Presentation

Objectives

1. Learn the history, status and priorities of this federal funding
2. Discover resources available to you for: orienting new staff, data collection, Continuous Quality Improvement (CQI) and professional development
3. Become acquainted with the Home Visitor Core Competencies
4. Learn the history and success of CQI activities in Oregon to date

Authorization and Administration

- Authorized by the Social Security Act
- Administered by:
 - Health Resources & Services Administration (HRSA) (States)
 - Administration for Children & Families (ACF) (Tribal grantees)



MIECHV Benchmark Measures

1. Maternal and Newborn Health
2. Child Injuries, Abuse, Neglect, Maltreatment and Emergency Department Visits
3. School Readiness and Achievement
4. Crime or Domestic Violence
5. Family Economic Self-Sufficiency
6. Coordination and Referral for other Community Services



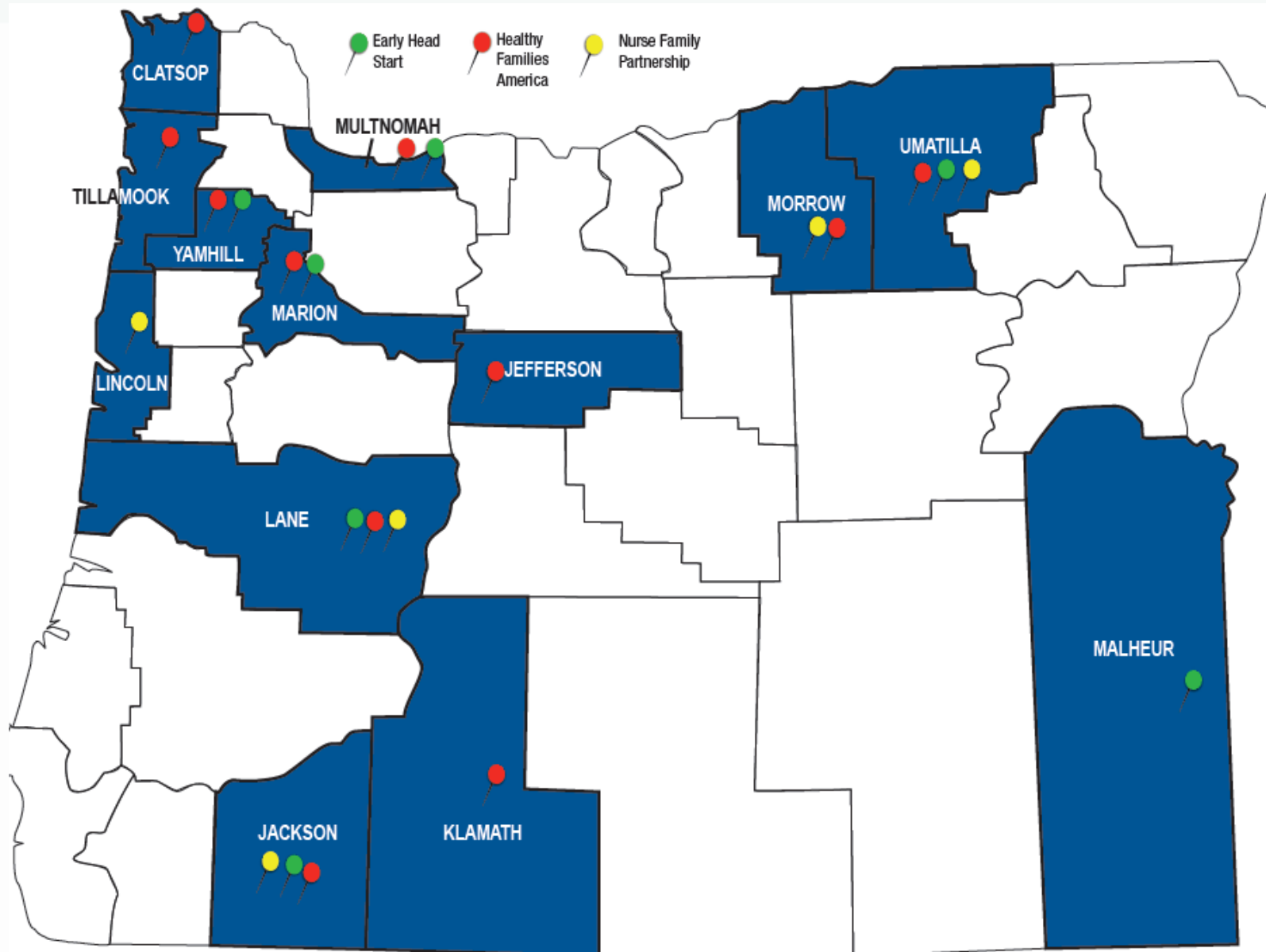
Two Fundamental Bodies of Work

- Expanding Evidence-Based Home Visiting Services
 - ✓ Early Head Start – Home Based (EHS)
 - ✓ Healthy Families America (HFA)
 - ✓ Nurse-Family Partnership (NFP)
- Developing Infrastructure to Support Sustainability
 - ✓ Coordinated Service Entry and Integration within a Comprehensive Early Childhood System
 - ✓ Continuous Quality Improvement
 - ✓ Workforce Development

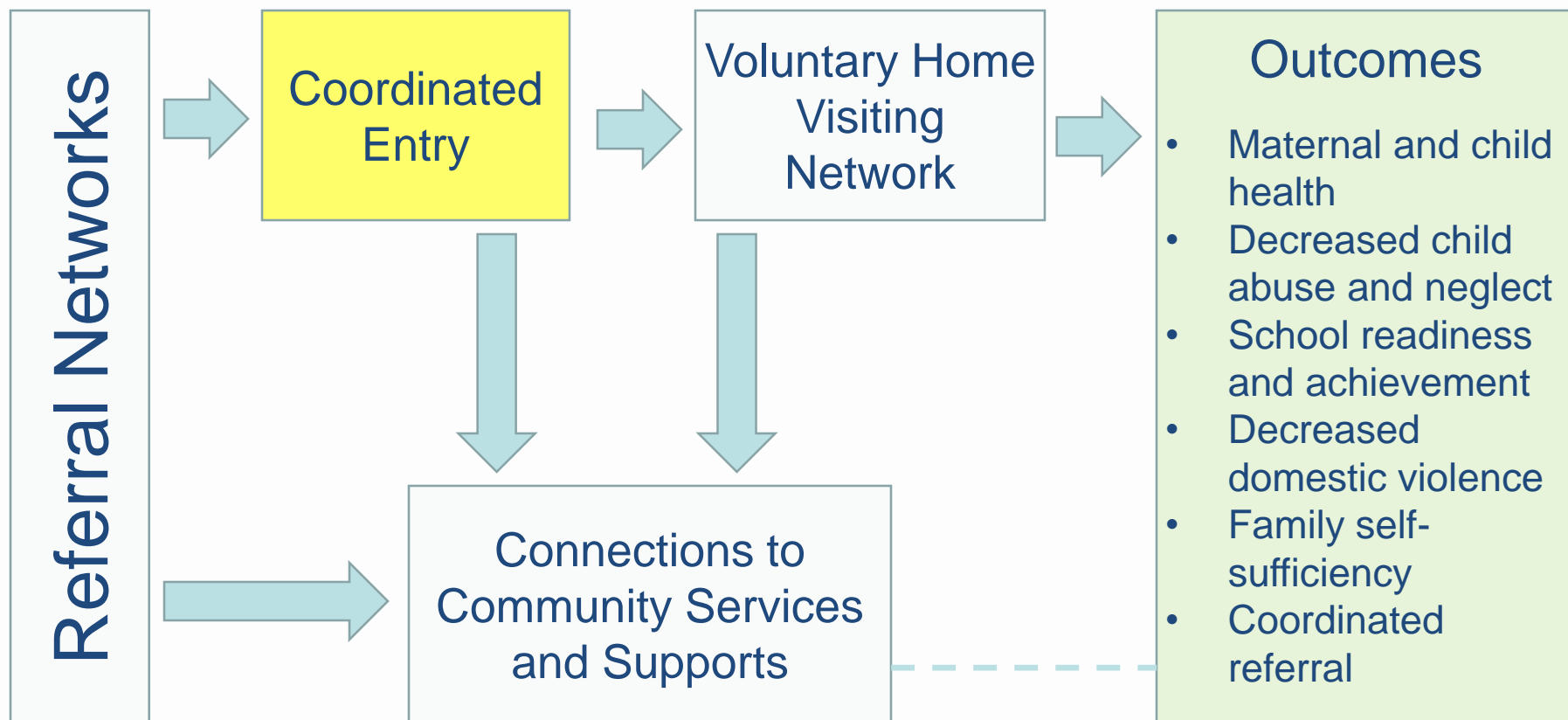
MIECHV Implementation in Oregon

- 20 Local Implementing Agencies providing home visiting services through 27 programs in 13 communities
- Oregon MIECHV enrollment capacity is 805 families
 - EHS: 185
 - HFA: 263
 - NFP: 357





OREGON'S HOME VISITING SYSTEM



Today

805 Families
13 Counties
27 Service Locations

Sustaining All Systems Development

2013

849 Families
13 Counties
29 Service Locations

Integrating Early Learning and Health Systems Transformation
Home Visitor Core Competencies
Infant Mental Health Endorsement
Family Partnership
Robust Continuous Quality Improvement

2011

329 Families
8 Counties
11 Service Locations

Home Visiting System Development
Increased Technical assistance
Data System Development
Workforce Development

2010

110 Families
3 Counties
6 Service Locations

Home Visiting Entry Questionnaire
No Wrong Door

Phases of Implementation

What Comes Next?

- Funded through September 2019
- Reauthorization

Oregon's Home Visiting workforce, serving families prenatally through age five, is prepared to promote and support optimal development of infants, young children and their families. Oregon families will receive culturally and linguistically responsive and relationship-focused home visiting services, provided by a workforce that demonstrates a common set of core competencies.



Vision

Oregon
Health
Authority

Oregon Home Visiting Core Competencies

Cultural & Linguistic Responsiveness

Dynamics of Family Relationships & Engagement

Family Health and Well-being

Family Self Sufficiency

Human Growth & Development

Human Growth & Development

Professional Best Practices

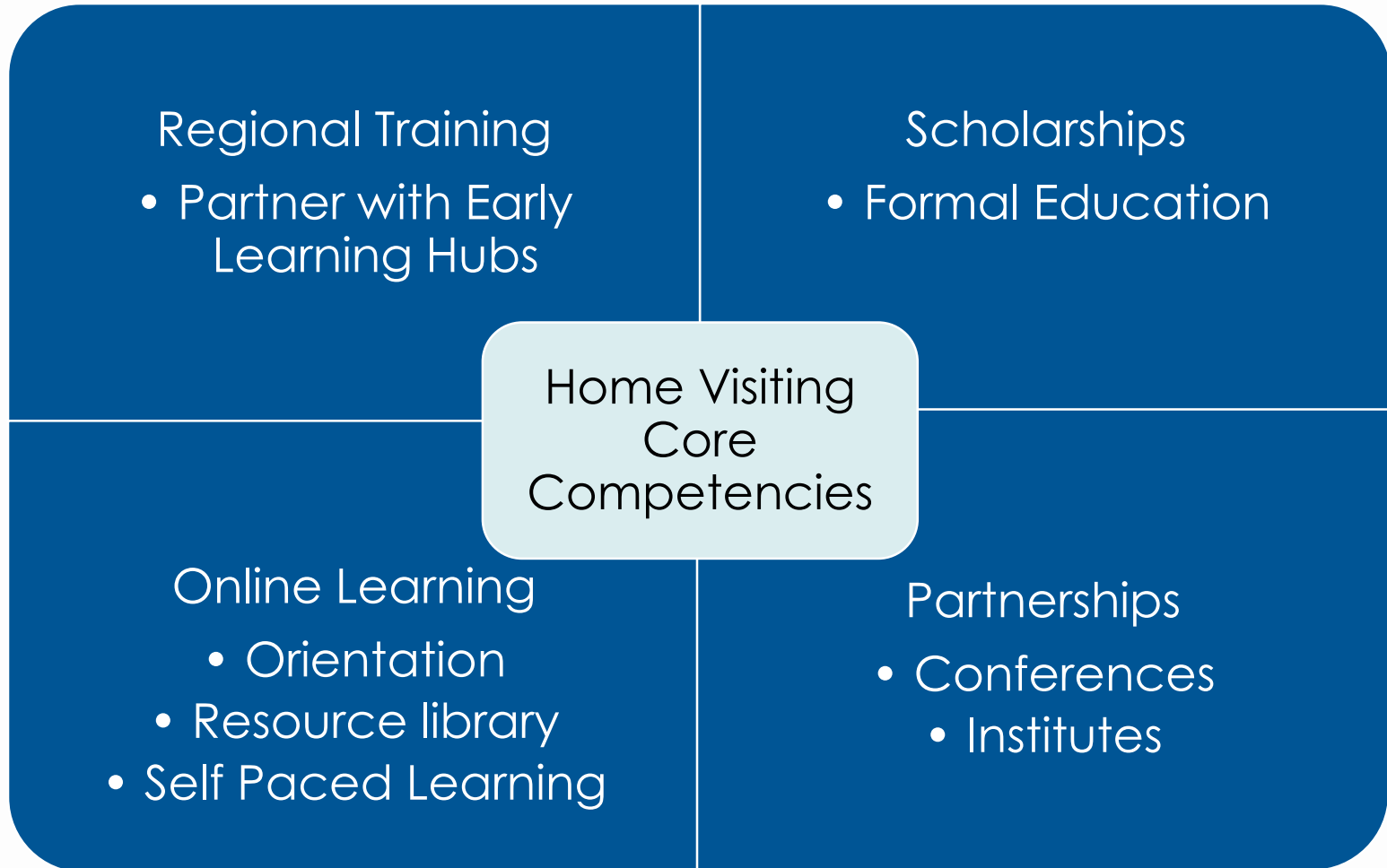
Professional Well Being

Screening & Assessment

Service System Coordination

Social Emotional Well being

Workforce Development



Workforce Development Web Resources

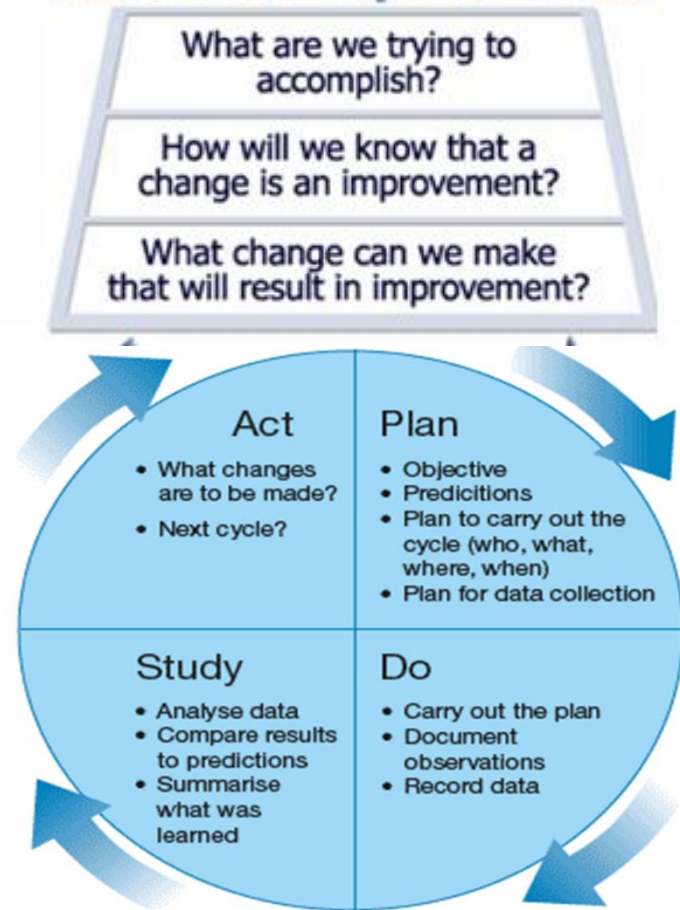
- MIECHV Orientation
- Home Visiting Training and Resources

The screenshot shows the Oregon Health Authority website. The browser address bar displays "Oregon Health Authority : ...". The website has a blue header with navigation links: "Oregon Health Plan", "Health System Reform", "Licenses and Certificates", and "Public Health". Below the header, the main content area is titled "Workforce Development". On the left, a sidebar menu lists various topics: "Public Health Home Visiting", "Maternal, Infant and Early Childhood Home Visiting", "MCH Public Health Nurse Home Visiting Programs", "Home Visiting System", "Workforce Development", "Home Visiting Training Resources", and "Orientation". The main content area on the right features a section titled "Oregon Home Visiting Core Competencies" with a paragraph explaining their purpose and a link to "Watch the Oregon Home Visiting Core Competencies 2015 webinar". Below this, there are three highlighted boxes: "MIECHV Orientation" (with a subtext about orientation materials), "MCH Public Health Nurse Training", and "Home Visiting Training and Resources". At the bottom right, there is a feedback prompt: "Help us improve! Was this page helpful?" with "Yes" and "No" buttons.

Continuous Quality Improvement (CQI)

- Strength-based
- Deliberate and defined improvement process
- Focused on community needs and improving population health
- Continuous and ongoing effort to achieve measurable improvements
- Uses data to identify strengths and opportunities

Model for Improvement



MIECHV CQI Technical Assistance

Statewide CQI Coordinator provides:

- CQI Introduction
- Project kick-off meetings
- Technical assistance during project
- Quarterly data reports
- Quarterly State CQI Project meetings
- Learning Collaborative meetings
- Ongoing contact and support
- Support for data collection and reporting



- Process and data improvements
- Increased comfort with CQI tools and methods
- Development of a “culture of quality”
- Implementing projects that support coordination across early childhood system



CQI in Oregon – Achievements

CQI Web Resources

MIECHV CQI website

- Orientation video and slides
- 2018 state CQI Project webinar and slides
- Link to *Safe Sleep for Babies*

Babies Home Visiting Maternal, Infant and Early Childhood Home Visiting MIECHV Continuous Quality Improvement (CQI)

MIECHV Continuous Quality Improvement (CQI)

Maternal, Infant and Early Childhood Home Visiting

MIECHV: EHS & HFO - 2017 Data Collection

MIECHV: NFP 2017 Data Collection

MIECHV Continuous Quality Improvement (CQI)

Workforce Development

MIECHV: Protocols

CONTACT US

Maternal and Child Health Section

MIECHV CQI Overview

Continuous Quality Improvement Webinar

This Webinar and PowerPoint presentation introduces the concept of Continuous Quality Improvement (CQI), provides an overview of the Plan-Do-Check-Act cycle that is used to guide quality improvement projects, and describes the process for conducting CQI activities for MIECHV Local Implementing Agencies in Oregon.

- Continuous Quality Improvement (CQI) for MIECHV (video)
- Developmental Referrals Driver Diagram (PDF)

2018 State CQI Project: Safe Sleep

The Oregon Maternal, Infant and Early Childhood Home Visiting (MIECHV) Program is leading Continuous Quality Improvement (CQI) efforts. CQI is a process of ongoing data collection and review, to understand how to improve health services and the health of people and communities.

For 2018, MIECHV is focusing on addressing infant safe sleep practices to help reduce the number of Sudden Unexpected Infant Death (SUIDs) in Oregon. SUID is the death of an infant less than 1 year of age that occurs suddenly and unexpectedly, and whose cause is not immediately obvious before investigation. According to the 2016 Vital Statistics Annual Report Volume 2, 33 infants died due to (SUID) in Oregon in 2016 (Oregon Health Authority Center for Health Statistics, 2016 Vital Statistics Annual Report Volume 2). For more information, please see *Safe Sleep for Babies*.

Webinar: MIECHV 2018 State CQI Project on Safe Sleep (video)

Slides: MIECHV 2018 State CQI Project on Safe Sleep Webinar (PDF)

2017 State CQI Project: Developmental Referrals

In 2017, MIECHV focused on connecting children who screen at-risk for development delays to Early Intervention and other community resources in a timely manner. Early detection of developmental delays through developmental screening and follow-up can promote a child's healthy development.

- Webinar: MIECHV 2017 State CQI Project: Timely connection to developmental services
- Slides: MIECHV 2017 State CQI Project Webinar (PDF)
- Developmental Referrals Driver Diagram (PDF)

Data Collection Web Resources

MIECHV Data Collection websites (EHS/HFA and NFP)

- Benchmark Measure Webinars
- FAQs
- **2017 MIECHV Forms**
- **2017 Data Collection Manual**
- Home Visiting Tools

MIECHV: EHS & HFO - 2017 Data Collection

Maternal, Infant and Early Childhood Home Visiting

MIECHV: EHS & HFO - 2017 Data Collection

MIECHV: NFP 2017 Data Collection

MIECHV Continuous Quality Improvement (CQI)

Workforce Development

MIECHV: Protocols

CONTACT US

Maternal and Child Health Section

Webinars

MIECHV Benchmark Measures Orientation Webinar

This Webinar and PowerPoint presentation below provides an overview of each of the 19 benchmark measures, including their definitions, and methods for data collection as well as some context for why they matter. The primary audience for this presentation is MIECHV/local implementing agency staff including Home Visitors and Home Visiting supervisors, program managers or directors and data entry staff.

- MIECHV Benchmark Measures Orientation Webinar 2017 (video)
- MIECHV Benchmark Measures Orientation Webinar 2017 (pdf)

Frequently Asked Questions (FAQs)

- MIECHV Data Collection FAQ (doc): updated August 15, 2017

2017 MIECHV Forms

- Enrollment Forms
- All Forms

2017 Data Collection Manual

Chapter 1: Overview of MIECHV 2017 (coming soon)

Chapter 2: Data Reporting Process (pdf)

Chapter 3: Data Collection and Reporting Schedule (pdf) **revised 06/15/17

Chapter 4: MIECHV Forms and Instructions (pdf) **revised 06/15/17

Appendices: Home Visiting Tools

Appendix A: Relationship Assessment Tool

1. Relationship Assessment Tool for Home Visitor - English (pdf)
2. Relationship Assessment Tool for Nurse - English (pdf)
3. Relationship Assessment Tool for Home Visitor - Spanish (pdf)
4. Relationship Assessment Tool for Nurse - Spanish (pdf)
5. Domestic Violence Organizations & Resources in Oregon

Appendix B: PHQ-9

Home Visiting Evaluations

National Home Visiting Evaluations

- Mother and Infant Home Visiting Program Evaluation ([MIHOPE](#))

Oregon Home Visiting Evaluations

- The Oregon Parenting Study (TOPS)
- MIECHV Oregon Retention Evaluation (MORE)
- Workforce development study (Region X Innovation grant)



Thank You!



For more information, please contact:

Benjamin Hazelton: Benjamin.hazelton@state.or.us

Kerry Cassidy Norton: Kerry.L.cassidynorton@state.or.us

Drewallyn Riley: Drewallyn.b.riley@state.or.us

Oregon
Health
Authority