



What is Public Health?

Public Health Connects Us All



What is Public Health?

- *Public Health saves money, improves our quality of life, helps children thrive and reduces human suffering.*



The Triple Aim

- *Improve the lifelong health of all Oregonians;*
- *Increase the quality, reliability and availability of care for all Oregonians*
- *Lower or contain the cost of care so it is affordable for everyone.*

Federal Affordable Care Act



Oregon Health Reform



Coordinated Care Organizations

CCOs have engaged in a variety of innovative efforts to change the delivery of care for their patients, including:

- *Incentives for primary care home enrollment*
- *Data utilization to target high-risk patients*
- *Care transition programs for emergency department patients*
- *Flexible funds to support social services that are intended to improve health and reduce the use of the medical care system*

CCO Intersections

- *Eastern Oregon CCO*



COMMUNITY

CCO Intersections With Title V

- *Patient Centered Primary Care Home*
 - *Well woman care*
 - *Adolescent well-visit*
 - *Medical Home*
 - *Oral Health*

CCO Intersections with Title V

- *Flexible Funding*
 - *Physical Activity for Children*
 - *Smoking*
 - *Toxic Stress, ACE's*
 - *Nutrition and food insecurity*
 - *Culturally and linguistically responsive services*

Early Learning System Reform

*Oregon Commission on Children and Families and Local County
Commissions on Children and Families
Sunset*



Oregon Early Learning Council



ELC Mission

- The Council is committed to making measurable progress to ensure that all Oregon children enter kindergarten ready to succeed and are raised in stable families with caregivers to whom they are attached.
- The Council is also committed to ensuring services and systems are coordinated and aligned to support achieving these goals.

ELC Guiding Principles

- Focusing strategies on children who are over-represented in the academic achievement gap and under-represented in accessing strong services and supports.
- Listening to stakeholders across the state and acting on what we hear and learn from them.
- Focusing on results and using data to drive decisions.
- Having the courage necessary to make change.
- Holding onto a sense of urgency.
- Focusing its message and broadening its communication.

Early Learning Division

- Under the direction and leadership of the Early Learning System Director and governed by the Early Learning Council, the Early Learning Division (ELD) implements state policies for about 190,300 at-risk children, age zero to six, and their families.
- Some of the programs ELD oversees include Oregon Pre-Kindergarten, Early Head Start, Head Start, Healthy Families Oregon, Relief Nurseries, and Oregon's Quality Rating and Improvement System. ELD is also responsible for the redesign of service delivery in Oregon through the Early Learning Hubs. In addition to programs and system redesign, the division oversees the licensing of 4,340 child care providers throughout the state.

Early Learning Intersections with Title V

- Children Ready to Enter Kindergarten
 - Breastfeeding-improved child health
 - Medical Home-improved child health
 - Oral Health-improved child health
 - Culturally and linguistically responsive services

Early Learning Intersections with Title V

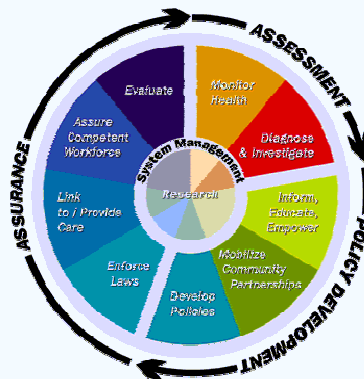
- *Stable and Attached Families*
 - *Toxic Stress, Trauma and Adverse Childhood Experiences*
 - *Nutrition and Food Insecurity*
 - *Culturally and linguistically responsive services*

Early Learning Intersections with Title V

- *Services and Systems are Coordinated and Aligned*
 - *Title V Strategies are aligned with:*
 - *The Oregon Public Health Division Strategic Plan*
 - *The State Health Improvement Plan*
 - *CCO Incentive Measures*

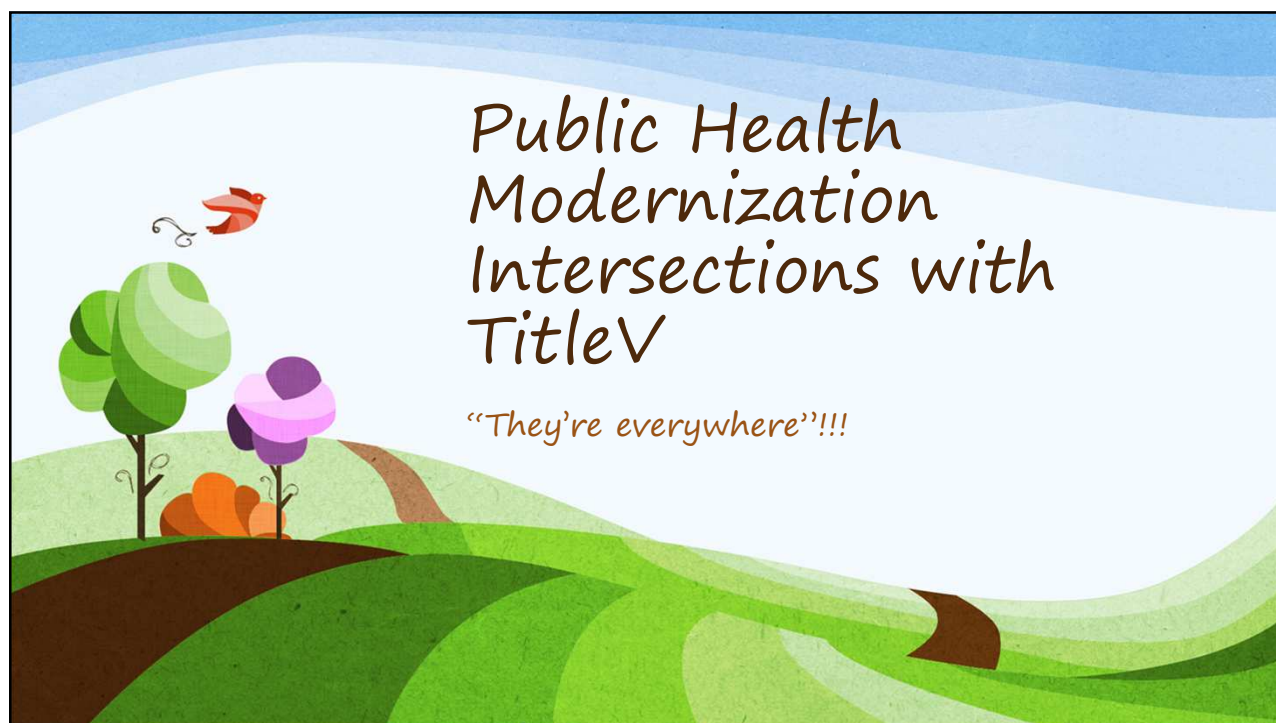
Public Health Modernization

- Task Force on the Future of Public Health



Modernized Framework for Governmental Public Health





Foundational Capabilities

- *Leadership and Organizational Capacity*
- *Health Equity and Cultural Responsiveness*

Foundational Capabilities

- *Community Partnership Development*
- *Assessment and Epidemiology*

Foundational Capabilities

- *Policy and Planning*
- *Communications*
- *Emergency Preparedness and Response*

Foundational Programs

- *Communicable Disease Control*
- *Environmental Health*
- *Access to Clinical Preventative Services*

Foundational Programs

- *Prevention and Health Promotion*
 - *Prevention and health promotion programs focus on health issues that affect social, emotional and physical health and safety. Programs specifically address contributors to chronic disease such as poor nutrition and inadequate physical activity, substance use disorders, tobacco use, mental health, oral health, intentional and unintentional injuries and suicide.*

Maternal Child Health: Promotion and Prevention

- *Oral Health*
 - *Prevent Communicable Disease*
 - *Economic Impacts of Employability due to Poor Tooth Condition*
- *Smoking*
 - *Decrease life long health effects from maternal smoking including poor birth weight, asthma*

Maternal Child Health: Prevention and Health Promotion

- Toxic Stress, trauma, and adverse childhood experiences
 - Prevention of family violence, suicide
 - Obesity, substance abuse

Nutrition and food Insecurity

Prevention of obesity

Impacting poverty

Maternal Child Health: Prevention and Health Promotion

- Culturally and linguistically responsive services
 - Prevent further health disparities by ensuring appropriate access to all
 - Promote and develop a competent work force to affect poverty

MCH Programs

- Title V policy efforts, One Key Question, ACE's, Breastfeeding Support, PHN Homevisiting, WIC, Reproductive Health and Family Planning

