

# December PE 46 Webinar



REPRODUCTIVE HEALTH PROGRAM  
Adolescent, Genetics, and Reproductive Health

Oregon  
Health  
Authority

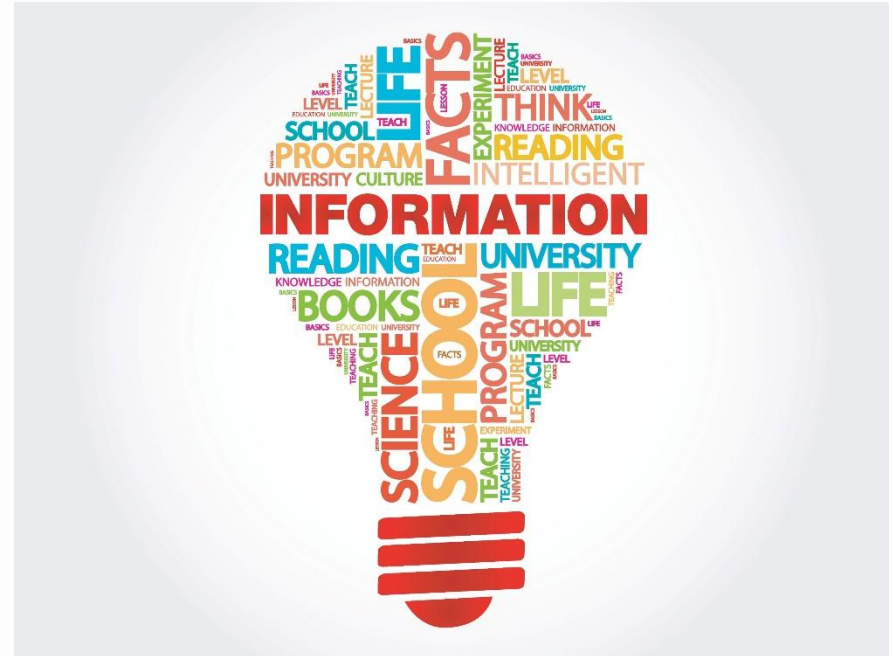
# Agenda

- Welcome/Introductions
- General Updates
- Everything PE 46
- Everything Data
- Panel Discussion
- General Discussion



# General Updates

- 2019 Triennial Reviews
- PE 46 Webinar January 25<sup>th</sup> 9am-10am:  
Transportation
- 2019 Webinar Topics
- PE 46 Web Page



**Dolly England** [Dolly.A.England@dhsoha.state.or.us](mailto:Dolly.A.England@dhsoha.state.or.us)

# Everything PE 46



REPRODUCTIVE HEALTH PROGRAM  
Adolescent, Genetics, and Reproductive Health

Oregon  
**Health**  
Authority



# Triennial Review

Here's what I will be looking for:

- **Evidence of Community Partnerships**
  - Events
  - Flyers/other materials
  - Formalized agreements/MOUs for partner referrals to other services providers or community-based organizations.
- **Documentation demonstrates plan has been implemented**
  - Meeting Sign in sheets
  - Meeting Agendas
  - Meeting attendee lists
- **Documentation demonstrates activities have been evaluated.**
  - Assessments related to access to reproductive health
  - Outcomes of Focus Groups
  - Survey Results
  - Evaluation from advisory groups

# Triennial Review

Here's what I will be looking for:

- **Documentation demonstrates modifications made in response to evaluation**
  - Changes to clinic hours
  - New Referral process to improve access to RH Services
  - Data represents increase in client numbers
  - Data represents increase in client satisfaction
- **Documentation demonstrates LPHA is either providing clinical RH services as an RH-certified provider and/or is actively engaging other providers**
  - Follow up to assure execution of submitted local program plan
  - Did you execute your plan?

# 2019 PE 46 Webinar Schedule

2019	Topic	Guest
January 1.25 9AM-10AM	Transportation	Kian Messkoub
February 2.22 9AM-10AM	TBD	
March 3.22 9AM-10AM	TBD	
April 4.19 9AM-10AM (NOTE- 3 <sup>rd</sup> Friday)	TBD	
May 5.24 9AM-10AM	Working with Youth	SBHC
June 6.28 9AM-10AM	TBD	
July 7.26 9AM-10AM	TBD	
August 8.23 9AM-10AM	TBD	
September 9.27 9AM-10AM	TBD	
October 10.25 9AM-10AM	TBD	
November 11.29 9AM-10AM (NOTE- 5 <sup>th</sup> Friday)	TBD	

## Webinar Topics for 2019

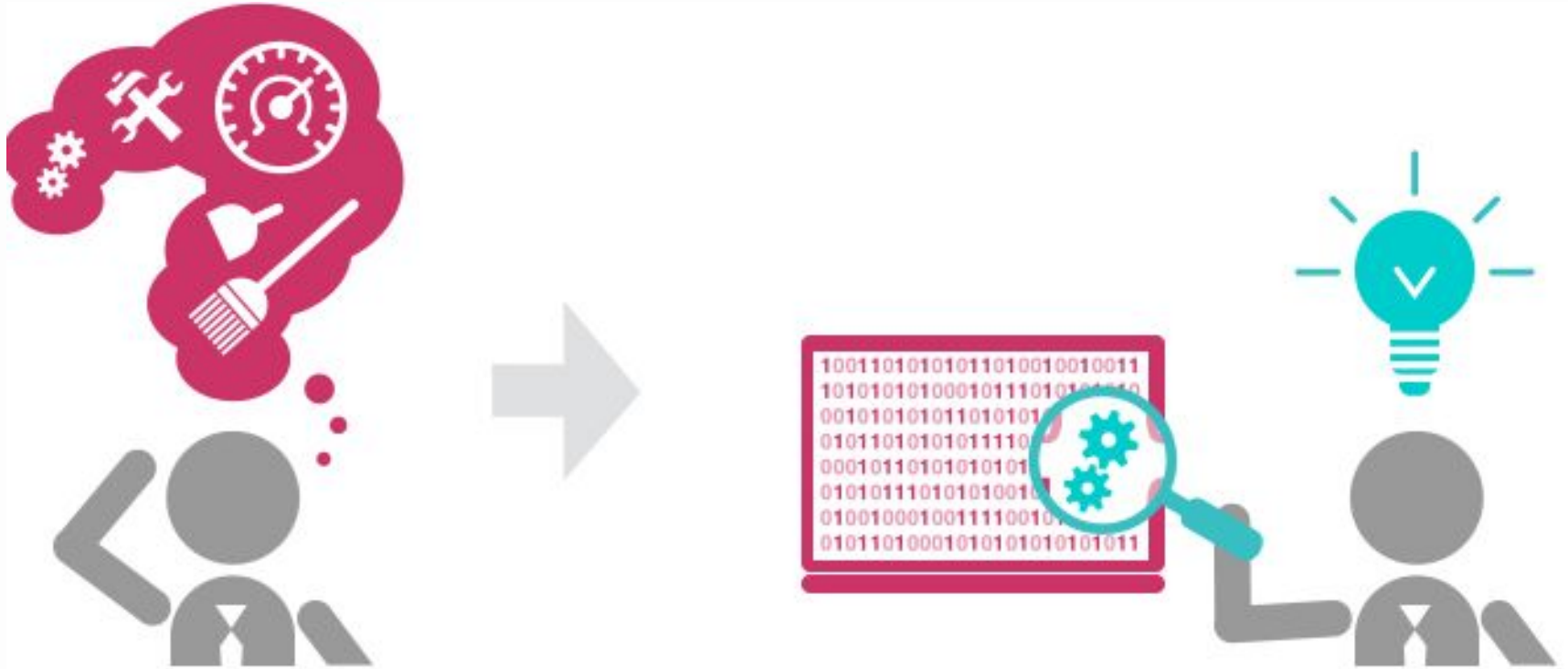
- Data
- Working with Youth
- How to integrate Diversity, Equity and Inclusion into your work
- Trauma Informed and responsive services
- Family Involvement
- What is Reproductive Justice
- Communities
- Working with Faith Based Communities
- Working with Latin X Communities



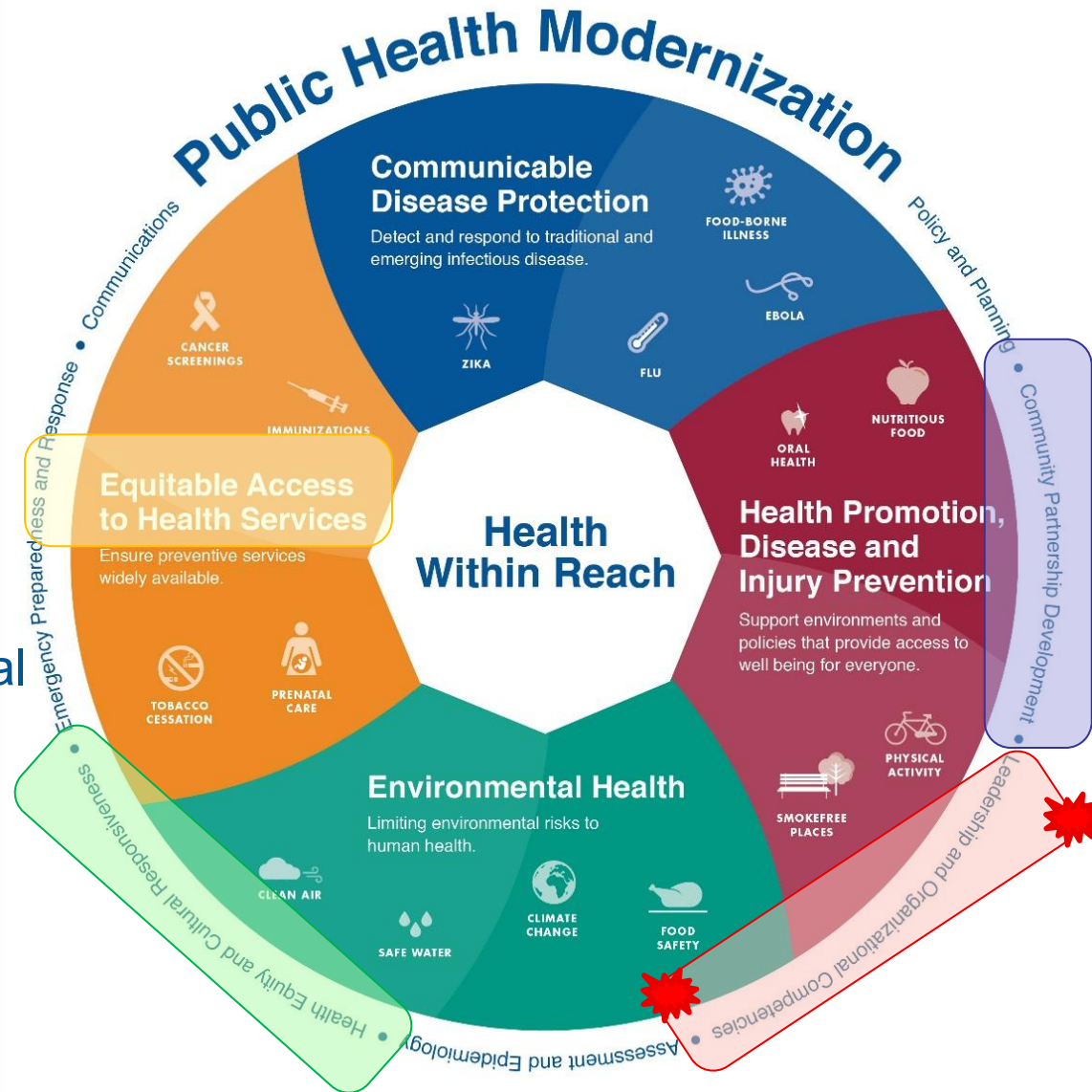
**KEEP  
CALM  
it's  
QUESTION  
TIME**



# Everything Data pt. 1



- Addresses Public Health Modernization
  - Access to Care
- Assess and increase access to RH services within your community
- Health Equity and Cultural Responsiveness
- Quality Improvement
  - Leadership and Organizational Competencies

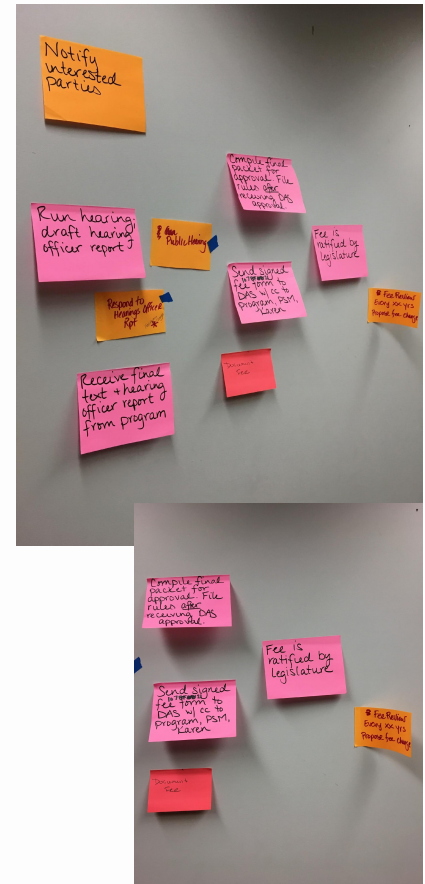
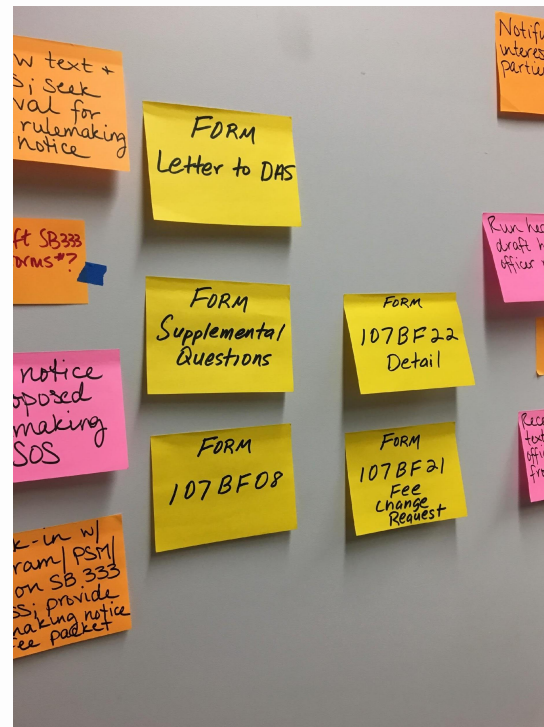
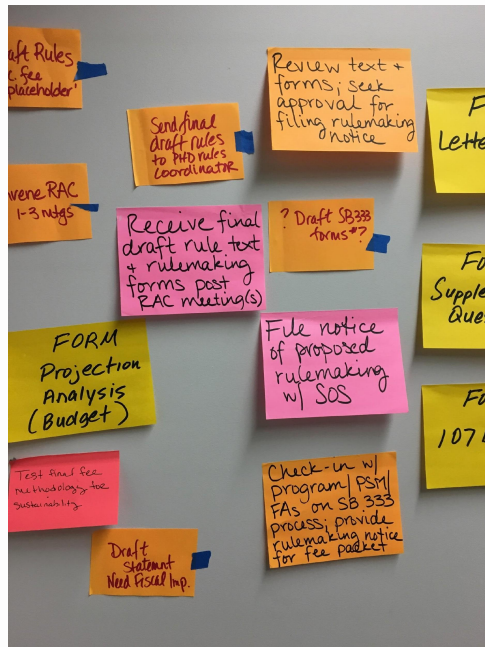
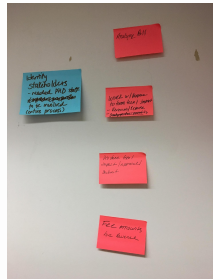


# What data are you starting with?



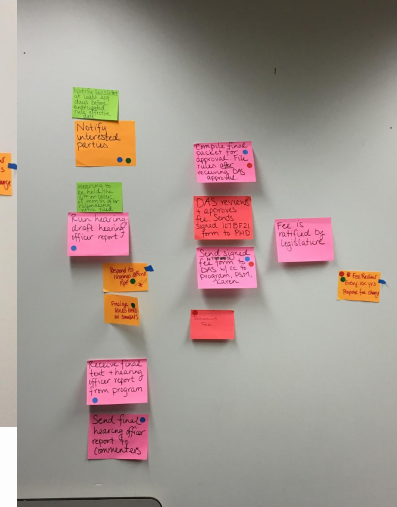
# What data does your county already have?

## Process Mapping



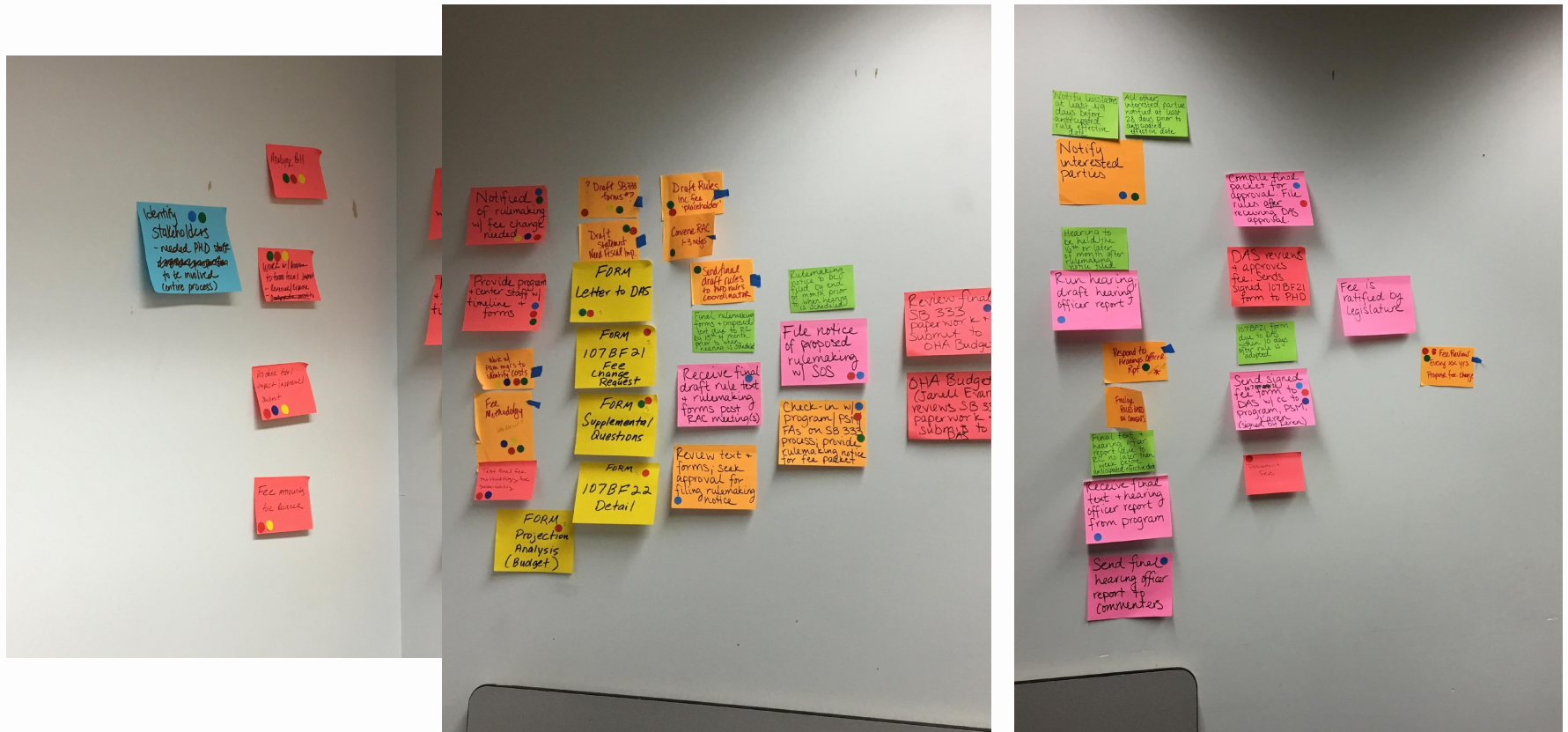


# Adding dots (key PHD stakeholders) and timelines (green post-its)



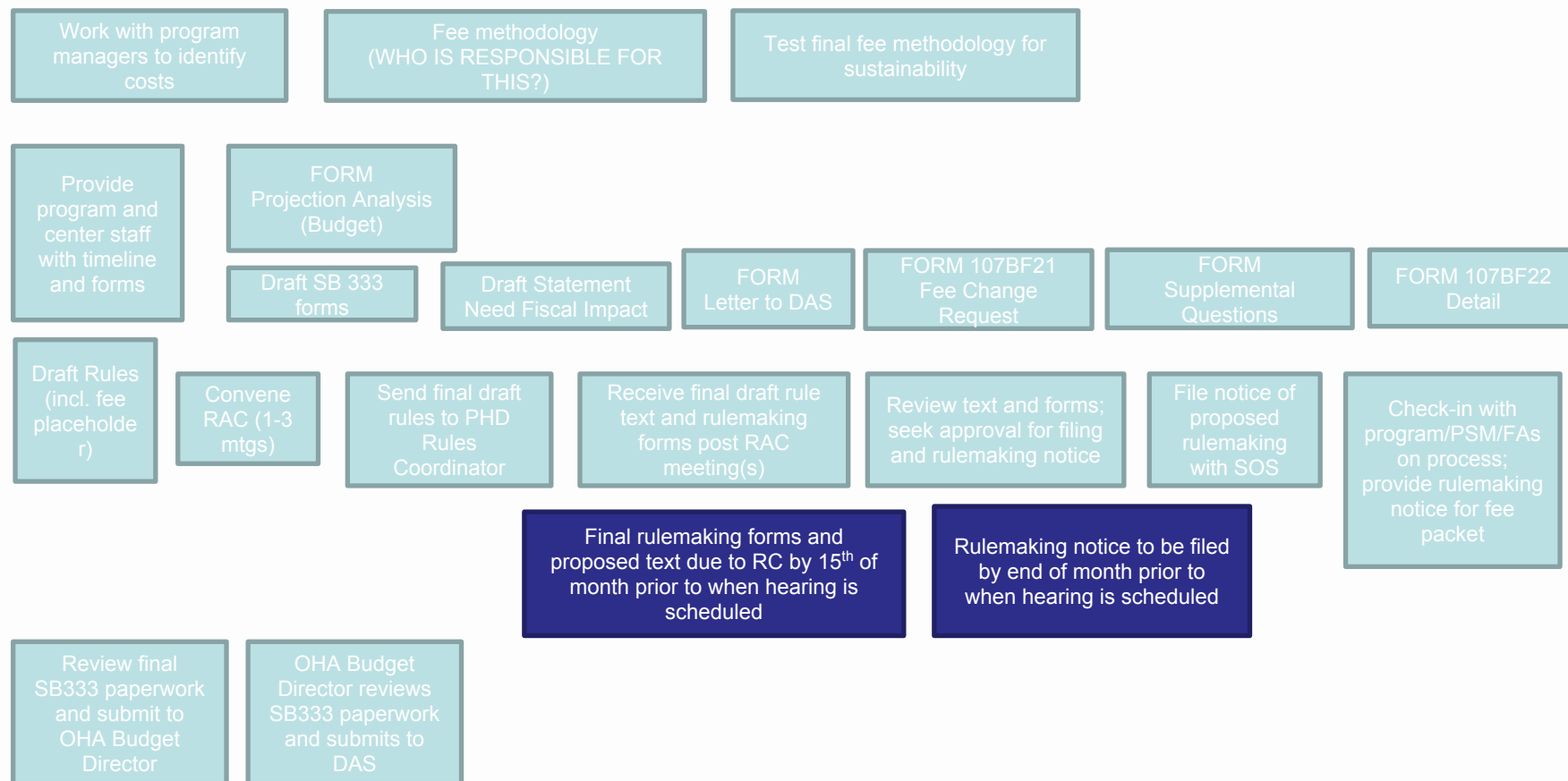
REPRODUCTIVE HEALTH PROGRAM  
Adolescent, Genetics, and Reproductive Health

# Final arrangements of process map post-its





# Notified of rulemaking with fee change needed

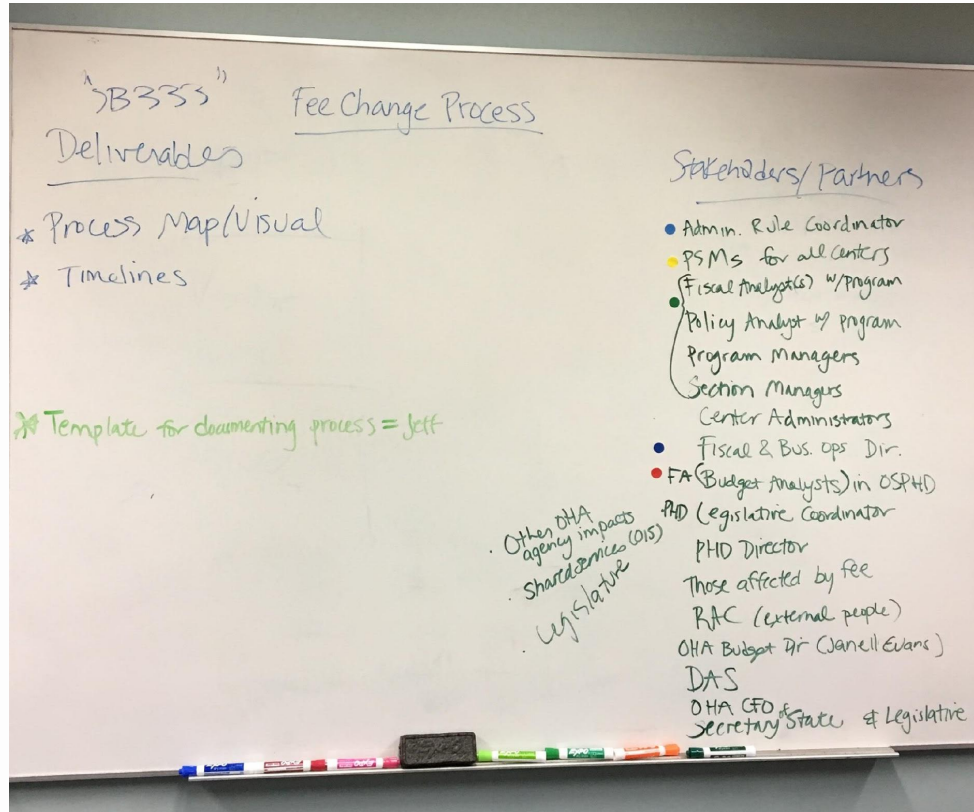
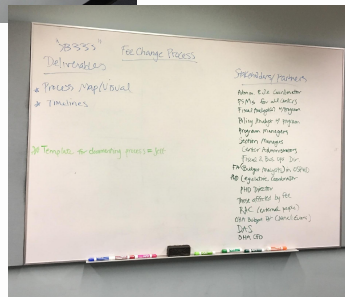
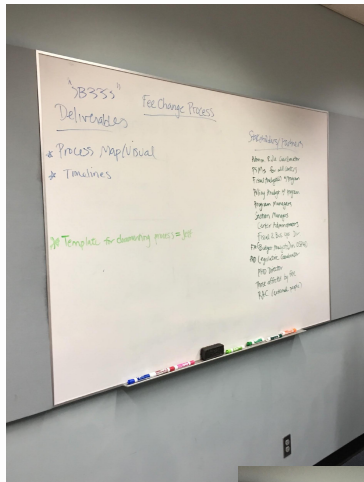


# Subject Matter Experts (SMEs)

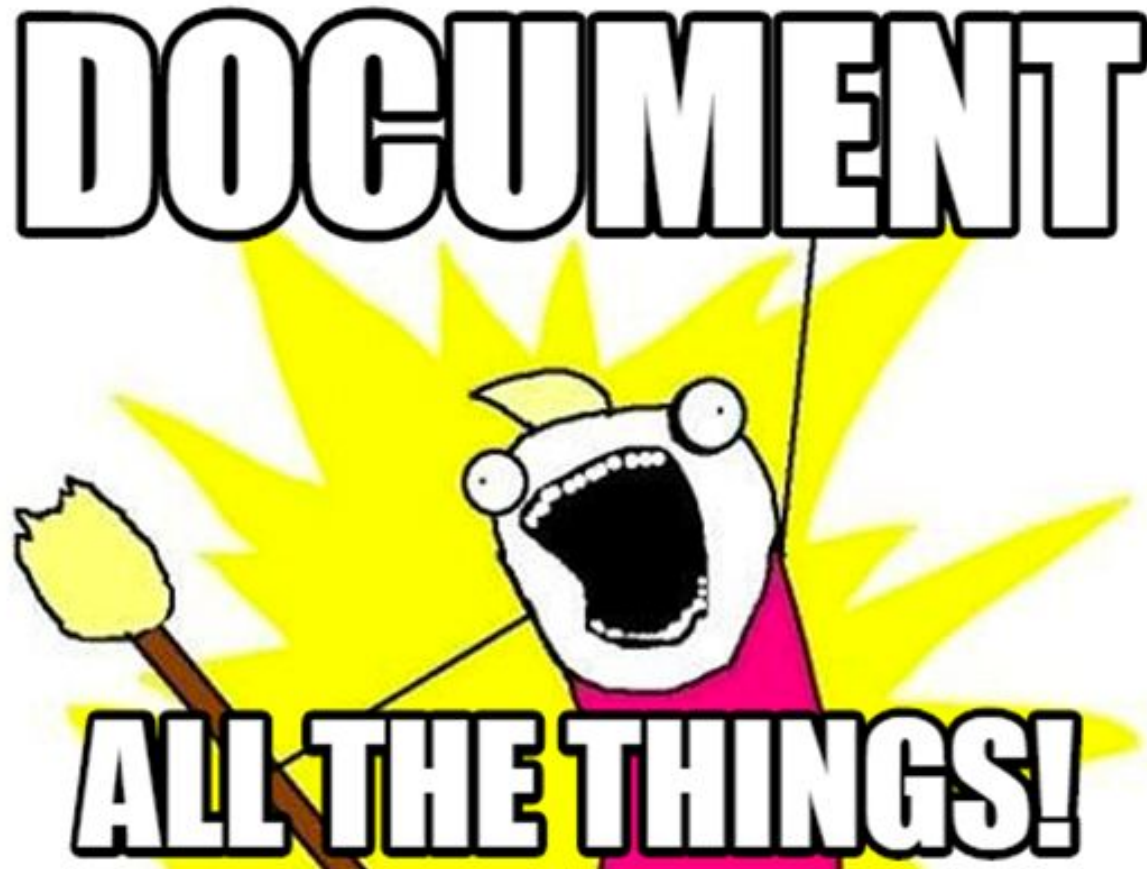


- Interview Subject Matter Experts (SMEs) and people they recommend to get a baseline of what type of assessment might provide the most information in the most efficient way
- Really aim to get input from all possible stakeholders and partners, including those that are impacted by any changes as a result of the needs analysis
- Example: [Multnomah County Equity Review Tool](#)

# Stakeholder Images from Process Mapping Session



**Don't forget to document!!!**



# Cultural Humility while collecting data

- Tim Holbert, Senior Researcher & Evaluator  
Program Design & Evaluation Services  
Multnomah County Health Department | Oregon Health Authority
- Ronnie Meyers  
Healthy Birth Initiatives (HBI)

**DIALOGUE  
CANNOT EXIST  
WITHOUT  
HUMILITY**

-Paulo  
Freire



# REPRODUCTIVE HEALTH

## ASSESSMENT PLANNING & IMPLEMENTATION

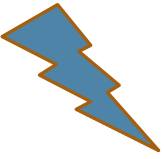
---

PE 46 WEBINAR: DECEMBER 21<sup>ST</sup>, 2018



# PE 46 PROGRAM COMPONENTS

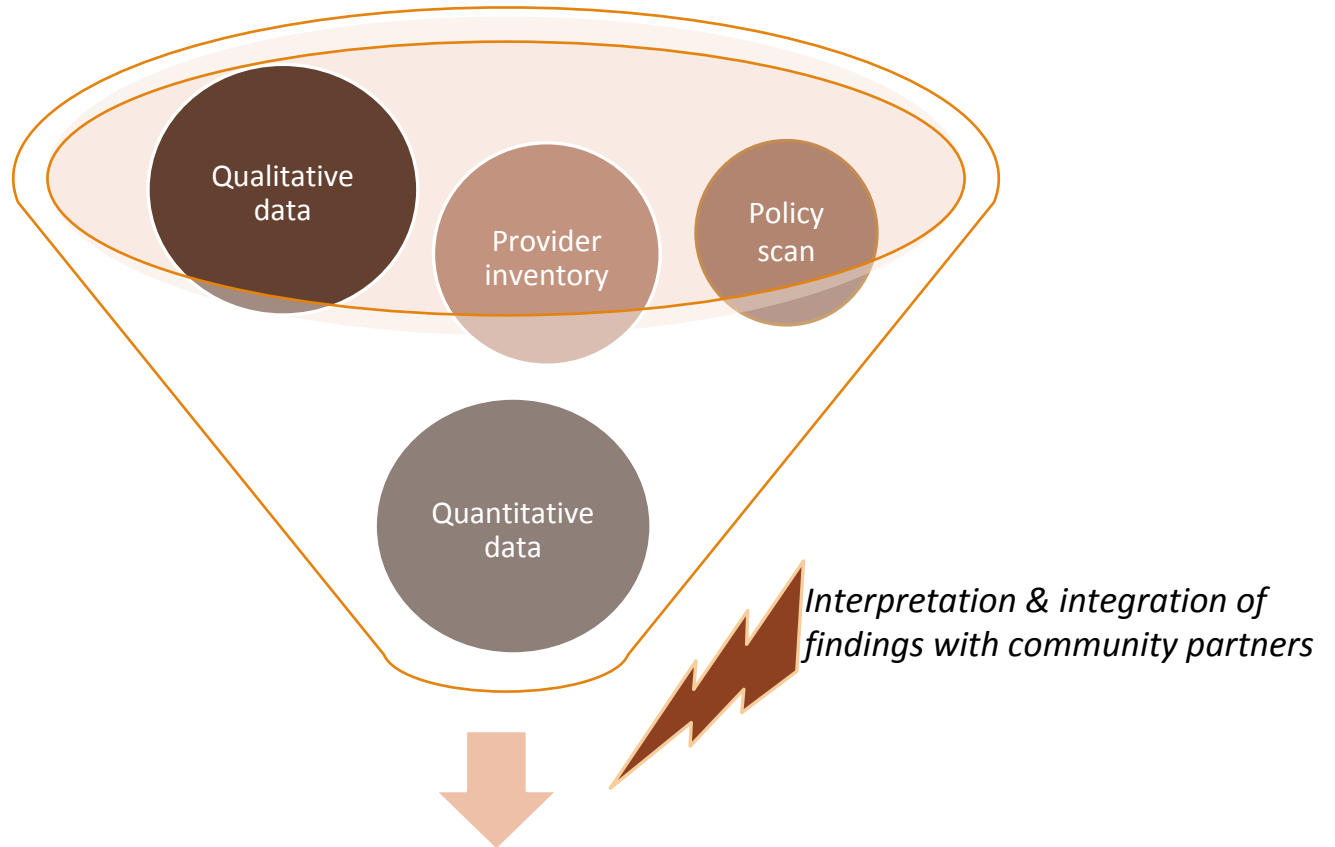
---

- 
- **Program Component A:** Develop strategic partnerships with shared accountability driving collective impact to support public health goals related to RH
  - **Program Component B:** Identify barriers to access and gaps in RH services
  - **Program Component C:** Develop and implement strategic plans to address gaps and barriers to accessing RH services
  - **Program Component D:** Ensure that access to high quality, comprehensive RH services is available within the region.

# RH ACTION PLAN (2018-19)

	Q3 (Sept 2018)	Q4 (Oct -Dec 2018)	Q1 (Jan-March 2019)	Q2 (April-June 2019)
<b>Secondary (quantitative) data analysis of RH by HEZ to determine priority populations</b>	<b>Target:</b> Identified most relevant & accessible data sources & queries for creating RH county profile	<b>Target:</b> Finalize draft of RH county profile for sharing externally with advisory group	<b>Target:</b> Share draft RH county profile with advisory group & identify priority populations	<b>Final:</b> Finalize RH data for county health profile in as part of recommendations report
<b>Inventory of all RH service providers by HEZ</b>	<b>Target:</b> Complete inventory for 3 key clinical providers (CCHC, PPCW, NH) & identify additional providers	<b>Target:</b> Complete inventory w/ additional/new clinical & pharmacy providers	<b>Target:</b> Share draft provider inventory w/ advisory group	<b>Final:</b> Finalize provider inventory as part of recommendations report
<b>Qualitative data collection &amp; analysis to determine access challenges for priority populations</b>	<b>Target:</b> Compile inventory of existing qualitative assessments focused on RH (CC, Tri-county, Oregon) & identify gaps	<b>Target:</b> Conduct key informant interviews (w/ RH providers & stakeholders) to determine need for community input/data collection	<b>Target:</b> Collect (in partnership w/ RH stakeholders) target population input/data	<b>Final:</b> Finalize community voice/input synopsis as part of recommendations report
<b>RH policy scan to identify local/county impacts and potential policy levers</b>	<b>Target:</b>	<b>Target:</b>	<b>Target:</b>	<b>Final:</b> Policy recommendations as part of formal report to inform strategic priorities
<b>Interpretation &amp; integration of findings with community partners</b>	<b>Target:</b> Conduct initial outreach to key RH stakeholders to form advisory group/task force	<b>Target:</b> Convene RH advisory group to interpret initial data & guide further interpretation of findings	<b>Target:</b> Re-convene RH advisory group to further interpret data and guide toward recommendations	<b>Final:</b> Formal recommendations report for RH strategic priorities/plan - public/publicize/disseminate

*Components*



*Results*

Increased understanding of RH need & capacity to respond

Assessment findings to inform 2019-20 RH strategic plan

Community partner engagement & collaboration

# Potential data sources

---

## *Quantitative*

AHLERS

Medicaid data

FQHC clinical data

Family Net



## **Vital stats**

PRAMS

SBHC data/school district data

OHA RH community profile

Gutmacker Institute

## *Qualitative (tbd)*

PACE – parenting program

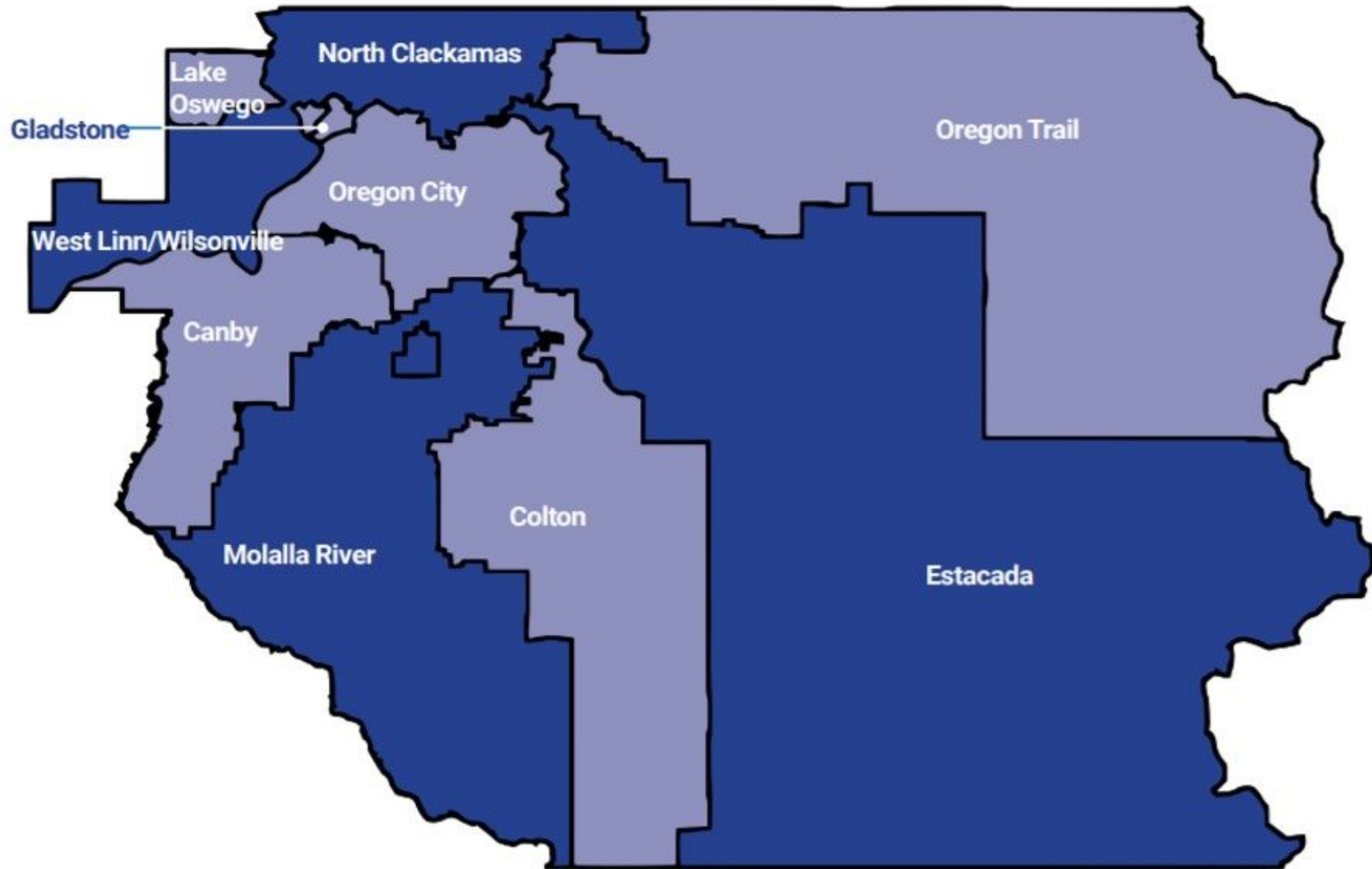
WIC families

Clackamas Community College

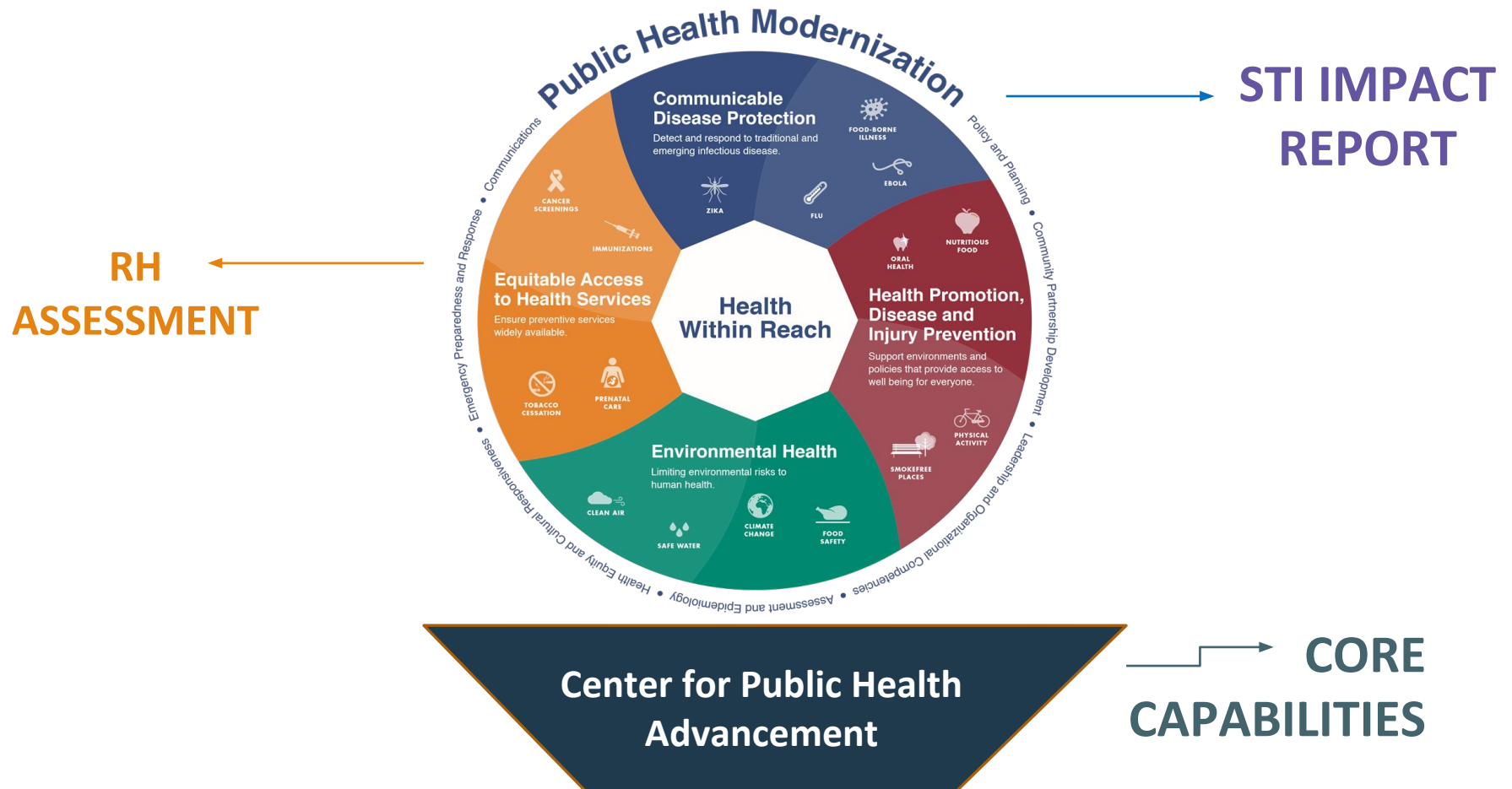
SBHC – students or providers

Planned Parenthood – teen council

# Clackamas County Health Equity Zones



# Engaging partners with data





# Resources

- Resources were sent out via email but will also be posted to the PE 46 website. [PE 46 Website](#)

# Open for Dialog



# Questions?



For more information visit our web page:

**PE 46 Web page**

[www.healthoregon.org/PE46](http://www.healthoregon.org/PE46)

**Reproductive Health Program**

[www.healthoregon.org/rhresources](http://www.healthoregon.org/rhresources)

# Thank you!

Please contact us with any questions.

[Dolly.A.England@state.or.us](mailto:Dolly.A.England@state.or.us)

**NEW CELL** 503-951-1760

