
May PE 46 Webinar



Working with Youth

REPRODUCTIVE HEALTH PROGRAM
Adolescent, Genetics, and Reproductive Health

Oregon
Health
Authority

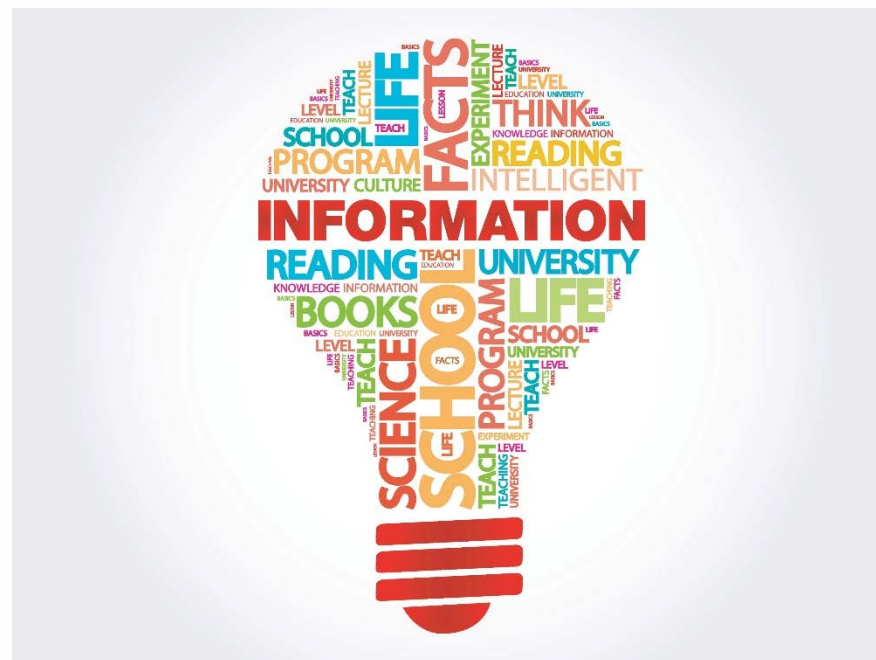
Agenda

- Welcome/Introductions
- General Updates
- Everything PE 46
- “*Working with Youth*” by guest speaker Deanna Nelson



General Updates

- 2019 Triennial Reviews
- June PE 46 Webinar:
Working with Faith
Communities
- 2018/2019 Local Program
Plan reports **DUE 7/31**
- PE 46 Web Page



Dolly England Dolly.A.England@dhsosha.state.or.us

Everything PE 46



REPRODUCTIVE HEALTH PROGRAM
Adolescent, Genetics, and Reproductive Health

Oregon
Health
Authority

Fiscal Updates



REPRODUCTIVE HEALTH PROGRAM
Adolescent, Genetics, and Reproductive Health

Questions



2019/2020 Local Program Plans



REPRODUCTIVE HEALTH PROGRAM LOCAL PROGRAM PLAN Community Participation and Assurances of Access to Reproductive Health Services FY 2020: July 1, 2019 to June 30, 2020

Instructions:

1. Complete all required fields.
2. Choose one (or more) objective under Program Component 1, and answer the accompanying questions.
3. List agencies or organizations with whom you currently partner and/or will seek to partner to ensure access to culturally competent, high-quality, evidence-based reproductive health services.
4. Referring to the Companion Document, choose one (or more) objective under Program Component 2, 3, and/or 4, and enter the objective's current baseline.
 - a. If choosing 2C, 3D, or 4F, please describe your objective.

Overarching goal: *Assure Access to Reproductive Health Services*

Agency Name:

Program Component 1: Ensure access to comprehensive culturally competent, high-quality, evidence-based reproductive health services within the region.

Check **all** that apply:

- ☐ 1A. Provide clinical reproductive health services as a certified RH Program agency.
- ☐ 1B. In collaboration with the Oregon RH Program, identify agency(s) within the region willing to become certified-RH Program agency(s).
- ☐ 1C. Work with agency(s) in the region that are currently certified-RH Program agency(s).

Please answer:

Are there other RH Program-certified agencies in your region?

☐ Yes (please list below) ☐ No ☐ Don't know

COMPANION DOCUMENT

Reproductive Health Program Local Program Plan (FY20) Program Components and Objectives

Program Component 1: Ensure access to comprehensive culturally competent, high-quality, evidence-based reproductive health services within the region.

Objective 1A: Provide clinical reproductive health services as a certified RH Program agency.

Objective 1B: In collaboration with the Oregon RH Program, identify agency(s) within the region willing to become certified-RH Program agency(s).

Objective 1C: Work with agency(s) in the region that are currently certified-RH Program agency(s).

Program Component 2: Develop strategic partnerships, with shared accountability, to improve access to reproductive health.

Objective 2A: Seek and sustain relationships with community partners representing populations experiencing health disparities, and/or partners providing reproductive health or related services to these populations.

(Baseline = # relationships with community partners representing populations experiencing health disparities and/or partners providing reproductive health or related services to these populations in FY2019)

Objective 2B: Convene partnership meetings focused on assuring access to reproductive health services, minimizing gaps and barriers, and/or improving the quality of reproductive health services.

(Baseline = # of partnership meetings focused on assuring access to reproductive health services, minimizing gaps and barriers, and/or improving the quality of reproductive health services in FY2019)

Objective 2C: Create your own objective related to developing strategic partnerships, with shared accountability, to drive a collective impact in support of public health goals related to reproductive health.

Suggested activities: Create partnership agreements with community providers identifying roles and areas of collaboration; host or co-host community forums/outreach events; develop preliminary community plan; establish coalition

Technical Assistance Calls Available

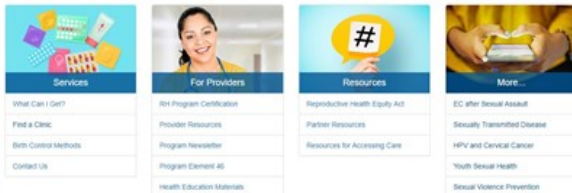
- Available for TA Calls: Email to schedule a time!!!



Dolly England Dolly.A.England@dhsosha.state.or.us

Reproductive and Sexual Health

The Oregon Reproductive Health Program works with clinics across the state to offer free or low-cost reproductive health services and birth control.



oregonccare
CCare Free Birth Control

Digital RH!!

- Find us on the web at healthoregon.org/rh
- Find us on Facebook  www.facebook.com/OregonCCare/
-  Launched May 1st
-  Instagram at @oregonccare



Dolly's Community Engagement Moment



Vancouver, WA 2000

Reaching Educating And Learning (REAL)



Peer Education Impact



Dolly England
Vancouver School of
Arts and Academics



2001

Dolly is a very empathetic and compassionate young woman. She takes every opportunity to educate others on issues such as HIV/AIDS, teen pregnancy prevention, decision-making, and diversity. Through Reaching, Educating, and Learning (REAL) a group of peer educators who visit schools and re-entry programs to talk to teens about HIV/AIDS prevention and risky sexual behavior, Dolly has been able to fulfill her desire to educate. As a REAL participant she works on designing skits to better present the information about safer sex to teens in the Vancouver and Evergreen high schools. To keep up on the latest information and facts Dolly has been able to attend different regional conferences to learn to better educate teens. She believes she is the future so she does what she can to make a difference and educate people about HIV/AIDS.

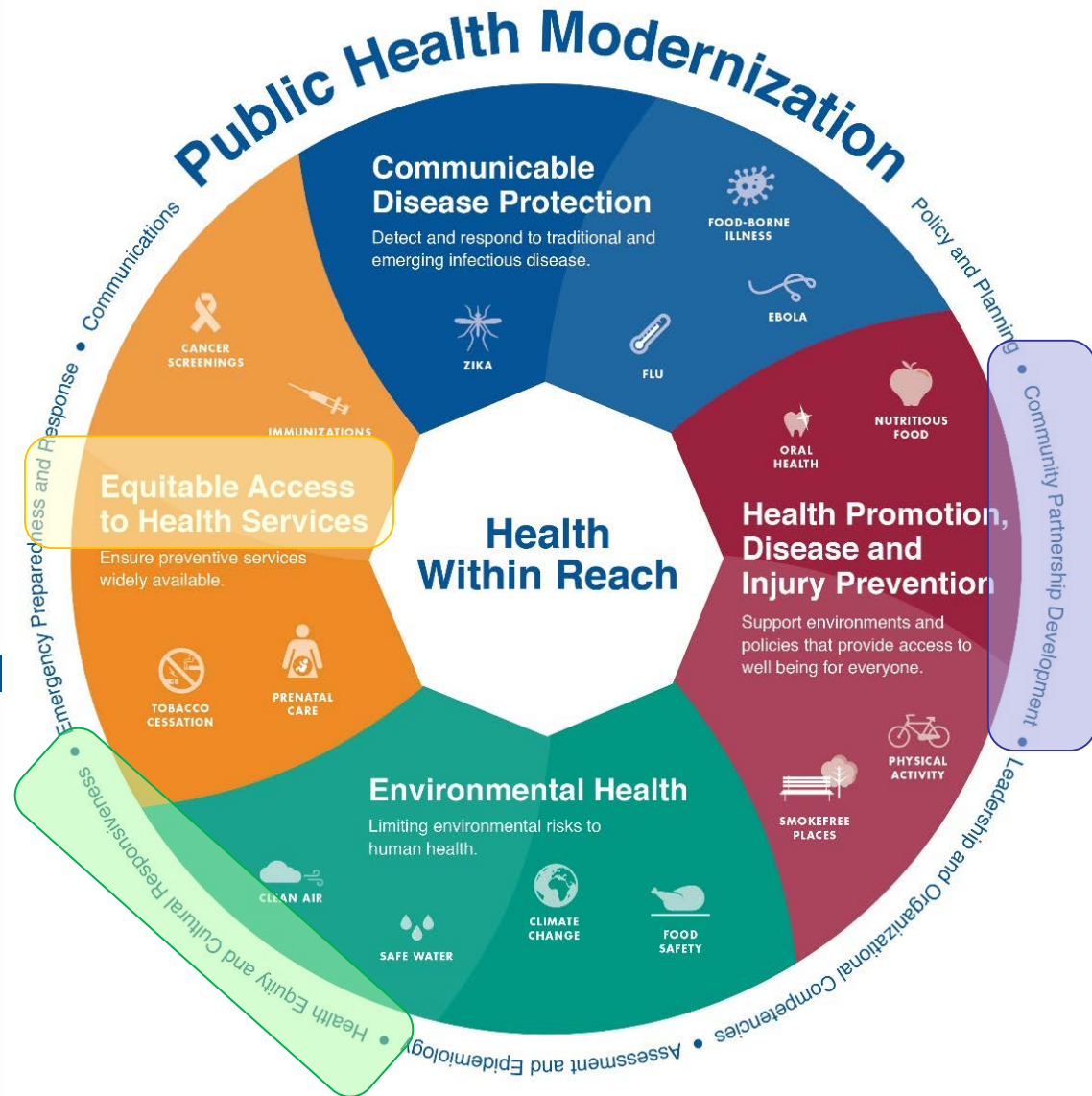
Dolly's strong desire to educate lead her to become a peer educator through interactive theatre, presentations and one on one with students in her school and surrounding community. Her desire to be involved in the community didn't just start recently. She has been a member of Girl Scouts for 11 years. Girl Scouts started her on the road to helping others, and she plans to continue educating and helping all of her life.

Dolly is a true leader. She has a bright spark and strong desire for the work that she does. Dolly stands up and speaks out as a strong role model for other youth in our community.



Addresses Public Health Modernization

- Equitable Access to Health Services
- Community Partnership Development
- Health Equity and Cultural Responsiveness



Questions?



REPRODUCTIVE HEALTH PROGRAM
Adolescent, Genetics, and Reproductive Health

Oregon
Health
Authority

For more information visit our web page:

PE 46 Web page

www.healthoregon.org/PE46

Reproductive Health Program

www.healthoregon.org/rhresources

Thank you!

Please contact us with any questions.

Dolly.A.England@state.or.us

CELL 503-951-1760

