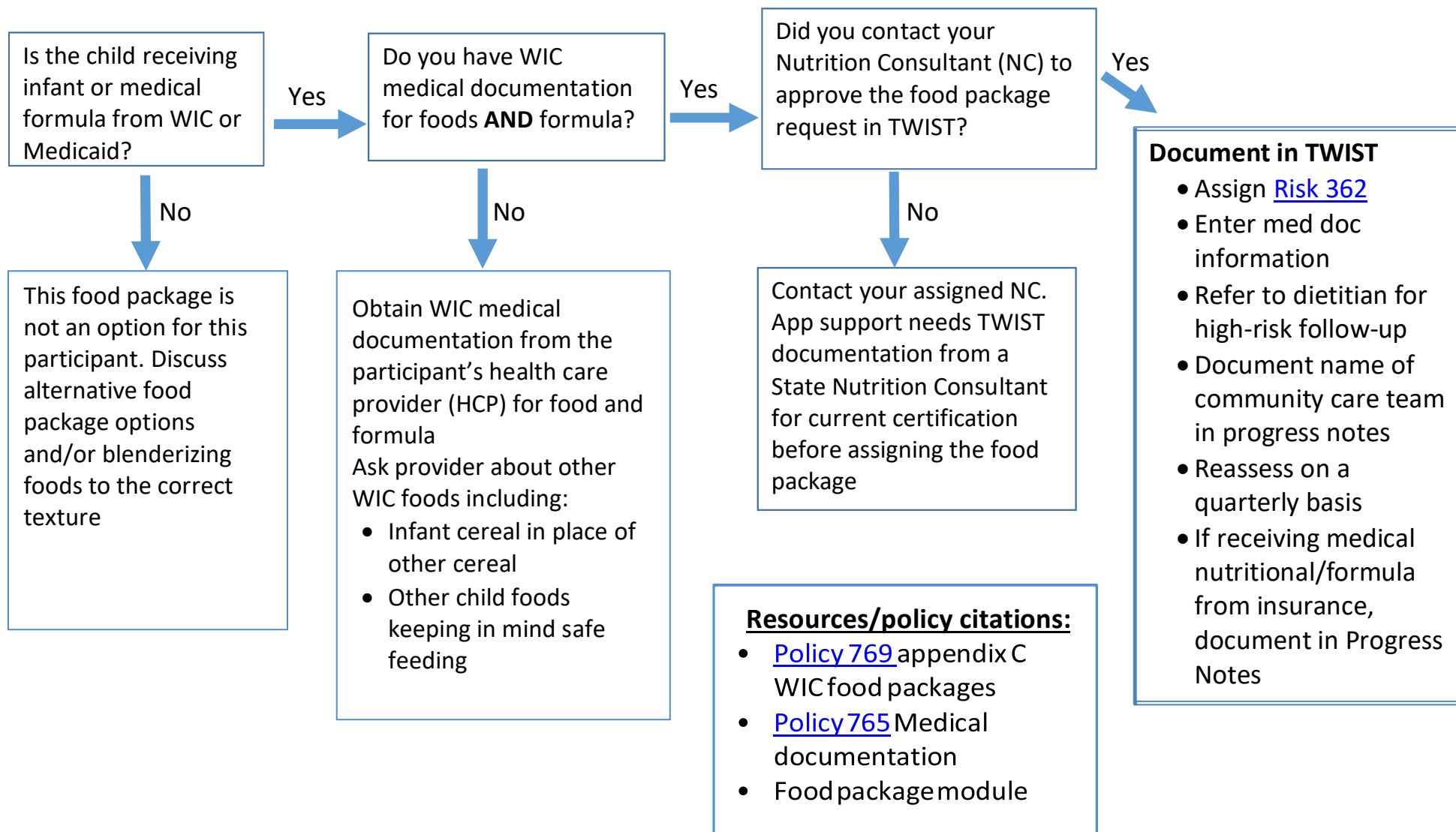


Process for jarred fruit and vegetable infant foods in place of Cash Value Benefit for children receiving formula



Process for jarred fruit and vegetable infant foods in place of Cash Value Benefit for children receiving formula from a non-WIC source

Formula is a requirement for a child to be eligible for jarred infant foods in place of the cash value benefit, including children who are tube fed. Oregon WIC can provide the current bid formula children receiving formula by tube feedings. For non-bid formulas, the request for formula needs to be referred to the enteral company providing the tube feeding equipment.

TWIST looks different when the formula is provided by the enteral company. No formula is assigned in Module C, so medical documentation will be in progress notes rather than on the med doc pop-up.

- ☐ Obtain medical documentation for infant foods
- ☐ Assign [Risk 362](#)
- ☐ Get State WIC Nutrition Consultant approval for access to infant foods
- ☐ Mark the child “special” on food package assignment screen
- ☐ Assign ZN as food package in Module C
- ☐ Assign infant foods in Module B
- ☐ Refer to your local WIC Nutritionist/RDN for follow up
- ☐ For each certification period the RDN will document in the high-risk care plan:
 1. Name of medical formula being provided by the enteral company
 2. Name of enteral company, feeding specialist following the child
 3. Enter the information from the medical documentation form