

# 2024 OREGON WIC DATA

## BAKER COUNTY HEALTH DEPARTMENT

### GROWING HEALTHY FUTURES

Participating in WIC supports the long-term health of women, infants, children and families. WIC is proven to support longer pregnancies and positive birth outcomes<sup>1</sup>.

The American Academy of Pediatrics identifies three foundations of healthy child development:

- **Stable, Responsive Relationships**
- **Safe, Supportive Environments**
- **Appropriate Nutrition<sup>2</sup>**

WIC is the premier public health nutrition program and it supports all three of these developmental foundations.



<sup>1</sup> Finger et al, Journal of Maternal and Child Health, 2017

<sup>2</sup> American Academy of Pediatrics, Policy statement, 2012

### WHO WE SERVED



# 490

Women, infants and children participated in WIC

# 47%

of all pregnant women served by WIC

# 267

WIC families served



# 75%

are working families

# 3 OUT OF 4

participants are infants and children under five



### BREASTFEEDING

# 95%

of WIC moms start out breastfeeding

# 45%

of WIC moms breastfeed exclusively for six months

# 2024 OREGON WIC DATA

## BAKER COUNTY HEALTH DEPARTMENT

### ECONOMIC BENEFITS OF WIC

#### 3 LOCAL STORES ACCEPTING WIC:

- 1 Independent store
- 0 Local or regional chains
- 2 National chain stores
- 0 Pharmacies

## \$242,829

Total WIC dollars spent  
by participants  
at local stores

#### ALL STORES THAT ACCEPT WIC MUST CARRY:

- At least 8 kinds of fresh fruits and vegetables
- Whole grain products
- Lowfat milk
- Lowfat yogurt
- Canned or dried beans



#### WIC FARM DIRECT NUTRITION PROGRAM

The Farm Direct Nutrition Program (FDNP) provides families with an additional source of nutritious food and education on selecting and preparing fresh produce.

## 6 PARTICIPATING FARMERS

at local farmers markets  
and farm stands

## \$3,744

FDNP dollars paid  
to local farmers

#### WIC CLINIC SITES

Baker County

*For more details about these numbers, please visit:*

<https://www.oregon.gov/OHA/PH/HEALTHYPEOPLEFAMILIES/WIC/Pages/annual.aspx>

**541-523-8211**

[www.bakercounty.org/health/wic.html](http://www.bakercounty.org/health/wic.html)

You can get this document in a different format free of charge. Call 971-673-0040 (voice) or 1-800-735-2900 (TTY) to arrange for the format that will work best for you.

Revised 3/19/2025

# 2024 OREGON WIC DATA

## BENTON COUNTY HEALTH DEPARTMENT

### GROWING HEALTHY FUTURES

Participating in WIC supports the long-term health of women, infants, children and families. WIC is proven to support longer pregnancies and positive birth outcomes<sup>1</sup>.

The American Academy of Pediatrics identifies three foundations of healthy child development:

- **Stable, Responsive Relationships**
- **Safe, Supportive Environments**
- **Appropriate Nutrition<sup>2</sup>**

WIC is the premier public health nutrition program and it supports all three of these developmental foundations.



<sup>1</sup> Finger et al, Journal of Maternal and Child Health, 2017

<sup>2</sup> American Academy of Pediatrics, Policy statement, 2012

### WHO WE SERVED



1,650

Women, infants and children participated in WIC

25%

of all pregnant women served by WIC

947

WIC families served



73%

are working families

3 OUT OF 4

participants are infants and children under five



### BREASTFEEDING

95%

of WIC moms start out breastfeeding

44%

of WIC moms breastfeed exclusively for six months



PUBLIC HEALTH DIVISION

Special Supplemental Nutrition Program for Women, Infants & Children



# 2024 OREGON WIC DATA

## BENTON COUNTY HEALTH DEPARTMENT

### ECONOMIC BENEFITS OF WIC

#### 10 LOCAL STORES ACCEPTING WIC:

- 3 Independent store
- 0 Local or regional chains
- 4 National chain stores
- 3 Pharmacies

## \$837,964

Total WIC dollars spent  
by participants  
at local stores

#### ALL STORES THAT ACCEPT WIC MUST CARRY:

- At least 8 kinds of fresh fruits and vegetables
- Whole grain products
- Lowfat milk
- Lowfat yogurt
- Canned or dried beans



#### WIC FARM DIRECT NUTRITION PROGRAM

The Farm Direct Nutrition Program (FDNP) provides families with an additional source of nutritious food and education on selecting and preparing fresh produce.

## 34 PARTICIPATING FARMERS

at local farmers markets  
and farm stands

## \$14,104

FDNP dollars paid  
to local farmers

#### WIC CLINIC SITES

Corvallis, Monroe

*For more details about these numbers, please visit:*

<https://www.oregon.gov/OHA/PH/HEALTHYPEOPLEFAMILIES/WIC/Pages/annual.aspx>

**541-766-6835**

<https://health.bentoncountyor.gov/wic/>

You can get this document in a different format free of charge. Call 971-673-0040 (voice) or 1-800-735-2900 (TTY) to arrange for the format that will work best for you.

Revised 3/19/2025

# 2024 OREGON WIC DATA

## CLACKAMAS COUNTY PUBLIC HEALTH

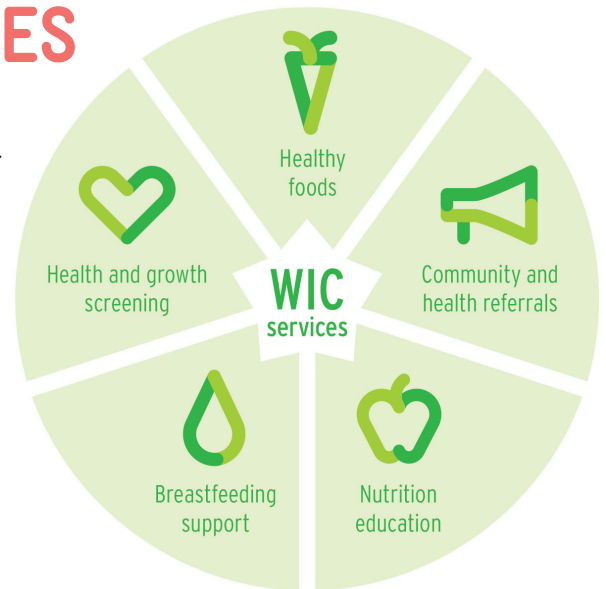
### GROWING HEALTHY FUTURES

Participating in WIC supports the long-term health of women, infants, children and families. WIC is proven to support longer pregnancies and positive birth outcomes<sup>1</sup>.

The American Academy of Pediatrics identifies three foundations of healthy child development:

- **Stable, Responsive Relationships**
- **Safe, Supportive Environments**
- **Appropriate Nutrition<sup>2</sup>**

WIC is the premier public health nutrition program and it supports all three of these developmental foundations.



<sup>1</sup> Finger et al, *Journal of Maternal and Child Health*, 2017

<sup>2</sup> American Academy of Pediatrics, *Policy statement*, 2012

### WHO WE SERVED



6,222

Women, infants and children participated in WIC

19%

of all pregnant women served by WIC

3,510

WIC families served



68%

are working families

3 OUT OF 4

participants are infants and children under five



### BREASTFEEDING

93%

of WIC moms start out breastfeeding

41%

of WIC moms breastfeed exclusively for six months

# 2024 OREGON WIC DATA

## CLACKAMAS COUNTY PUBLIC HEALTH

### ECONOMIC BENEFITS OF WIC

#### 51 LOCAL STORES ACCEPTING WIC:

- 8 Independent store
- 21 Local or regional chains
- 14 National chain stores
- 8 Pharmacies

## \$3,328,240

Total WIC dollars spent  
by participants  
at local stores

#### ALL STORES THAT ACCEPT WIC MUST CARRY:

- At least 8 kinds of fresh fruits and vegetables
- Whole grain products
- Lowfat milk
- Lowfat yogurt
- Canned or dried beans



#### WIC FARM DIRECT NUTRITION PROGRAM

The Farm Direct Nutrition Program (FDNP) provides families with an additional source of nutritious food and education on selecting and preparing fresh produce.

## 66 PARTICIPATING FARMERS

at local farmers markets  
and farm stands

## \$27,192

FDNP dollars paid  
to local farmers

#### WIC CLINIC SITES

Canby, Milwaukie, Oregon City, Sandy, Wilsonville

*For more details about these numbers, please visit:*

<https://www.oregon.gov/OHA/PH/HEALTHYPEOPLEFAMILIES/WIC/Pages/annual.aspx>

**503-655-8476**

[www.clackamas.us/publichealth/wic.html](http://www.clackamas.us/publichealth/wic.html)

You can get this document in a different format free of charge. Call 971-673-0040 (voice) or 1-800-735-2900 (TTY) to arrange for the format that will work best for you.

Revised 3/19/2025



# 2024 OREGON WIC DATA

## CLATSOP COUNTY PUBLIC HEALTH

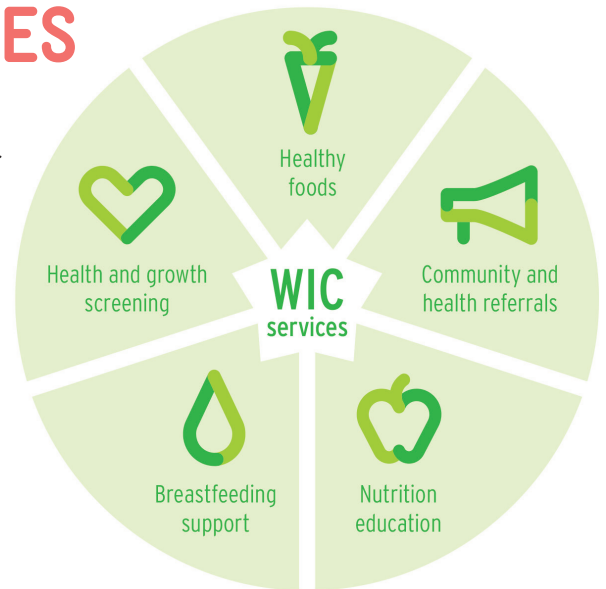
### GROWING HEALTHY FUTURES

Participating in WIC supports the long-term health of women, infants, children and families. WIC is proven to support longer pregnancies and positive birth outcomes<sup>1</sup>.

The American Academy of Pediatrics identifies three foundations of healthy child development:

- **Stable, Responsive Relationships**
- **Safe, Supportive Environments**
- **Appropriate Nutrition<sup>2</sup>**

WIC is the premier public health nutrition program and it supports all three of these developmental foundations.



<sup>1</sup> Finger et al, Journal of Maternal and Child Health, 2017

<sup>2</sup> American Academy of Pediatrics, Policy statement, 2012

### WHO WE SERVED



1,045

Women, infants and children participated in WIC

36%

of all pregnant women served by WIC

626

WIC families served



79%

are working families

3 OUT OF 4

participants are infants and children under five



### BREASTFEEDING

98%

of WIC moms start out breastfeeding

46%

of WIC moms breastfeed exclusively for six months

# 2024 OREGON WIC DATA

## CLATSOP COUNTY PUBLIC HEALTH

### ECONOMIC BENEFITS OF WIC

#### 8 LOCAL STORES ACCEPTING WIC:

- 4 Independent store
- 0 Local or regional chains
- 2 National chain stores
- 2 Pharmacies

## \$570,292

Total WIC dollars spent  
by participants  
at local stores

#### ALL STORES THAT ACCEPT WIC MUST CARRY:

- At least 8 kinds of fresh fruits and vegetables
- Whole grain products
- Lowfat milk
- Lowfat yogurt
- Canned or dried beans



#### WIC FARM DIRECT NUTRITION PROGRAM

The Farm Direct Nutrition Program (FDNP) provides families with an additional source of nutritious food and education on selecting and preparing fresh produce.

## 11 PARTICIPATING FARMERS

at local farmers markets  
and farm stands

## \$6,764

FDNP dollars paid  
to local farmers

#### WIC CLINIC SITES

Astoria, Bob Chisholm Community Center

---

*For more details about these numbers, please visit:*

<https://www.oregon.gov/OHA/PH/HEALTHYPEOPLEFAMILIES/WIC/Pages/annual.aspx>

**503-325-8500**

[www.co.clatsop.or.us/publichealth/page/wic-women-infants-and-children](http://www.co.clatsop.or.us/publichealth/page/wic-women-infants-and-children)

---

You can get this document in a different format free of charge. Call 971-673-0040 (voice) or 1-800-735-2900 (TTY) to arrange for the format that will work best for you.

Revised 3/19/2025



# 2024 OREGON WIC DATA

## COLUMBIA HEALTH SERVICES (CHS)

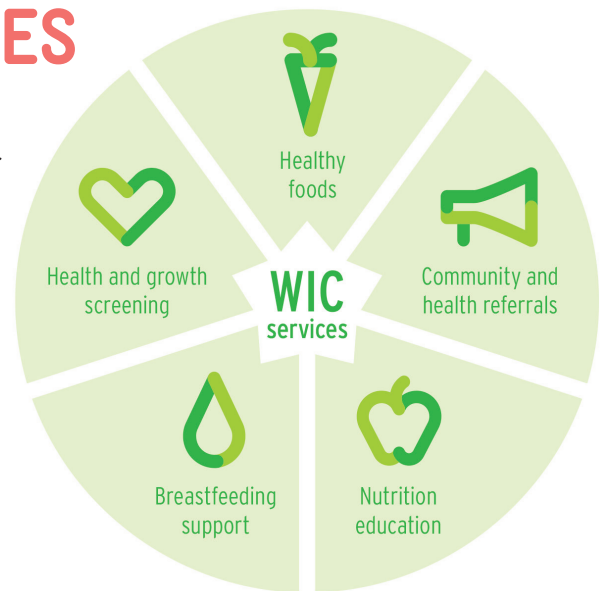
### GROWING HEALTHY FUTURES

Participating in WIC supports the long-term health of women, infants, children and families. WIC is proven to support longer pregnancies and positive birth outcomes<sup>1</sup>.

The American Academy of Pediatrics identifies three foundations of healthy child development:

- **Stable, Responsive Relationships**
- **Safe, Supportive Environments**
- **Appropriate Nutrition<sup>2</sup>**

WIC is the premier public health nutrition program and it supports all three of these developmental foundations.



<sup>1</sup> Finger et al, Journal of Maternal and Child Health, 2017

<sup>2</sup> American Academy of Pediatrics, Policy statement, 2012

### WHO WE SERVED



# 1,626

Women, infants and children participated in WIC

# 30%

of all pregnant women served by WIC

# 914

WIC families served



# 60%

are working families

# 3 OUT OF 4

participants are infants and children under five



### BREASTFEEDING

# 96%

of WIC moms start out breastfeeding

# 44%

of WIC moms breastfeed exclusively for six months

# 2024 OREGON WIC DATA

## COLUMBIA HEALTH SERVICES (CHS)

### ECONOMIC BENEFITS OF WIC

#### 6 LOCAL STORES ACCEPTING WIC:

- 3 Independent store
- 0 Local or regional chains
- 2 National chain stores
- 1 Pharmacies

## \$887,607

Total WIC dollars spent  
by participants  
at local stores

#### ALL STORES THAT ACCEPT WIC MUST CARRY:

- At least 8 kinds of fresh fruits and vegetables
- Whole grain products
- Lowfat milk
- Lowfat yogurt
- Canned or dried beans



#### WIC FARM DIRECT NUTRITION PROGRAM

The Farm Direct Nutrition Program (FDNP) provides families with an additional source of nutritious food and education on selecting and preparing fresh produce.

## 17 PARTICIPATING FARMERS

at local farmers markets  
and farm stands

## \$6,464

FDNP dollars paid  
to local farmers

#### WIC CLINIC SITES

Clatskanie, Rainier, Scappoose, St. Helens, Vernonia

*For more details about these numbers, please visit:*

<https://www.oregon.gov/OHA/PH/HEALTHYPEOPLEFAMILIES/WIC/Pages/annual.aspx>

**503-397-4651**

[www.columbia-health.org/wic.html](http://www.columbia-health.org/wic.html)

You can get this document in a different format free of charge. Call 971-673-0040 (voice) or 1-800-735-2900 (TTY) to arrange for the format that will work best for you.

*Revised 3/19/2025*

# 2024 OREGON WIC DATA

## COOS COUNTY HEALTH & WELLNESS

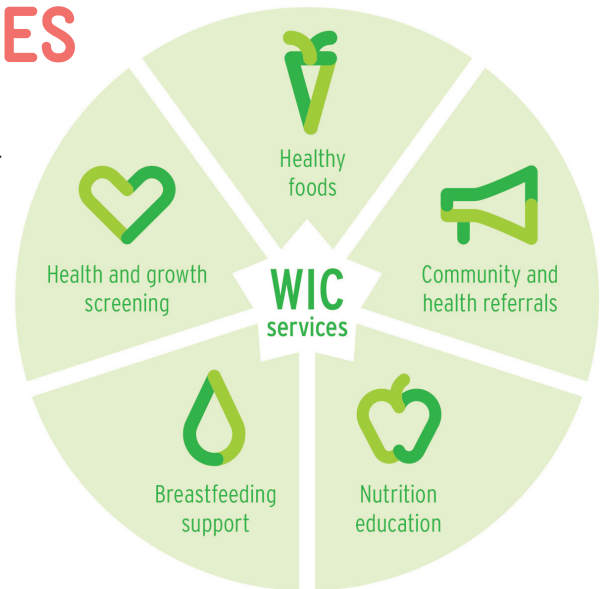
### GROWING HEALTHY FUTURES

Participating in WIC supports the long-term health of women, infants, children and families. WIC is proven to support longer pregnancies and positive birth outcomes<sup>1</sup>.

The American Academy of Pediatrics identifies three foundations of healthy child development:

- **Stable, Responsive Relationships**
- **Safe, Supportive Environments**
- **Appropriate Nutrition<sup>2</sup>**

WIC is the premier public health nutrition program and it supports all three of these developmental foundations.



<sup>1</sup> Finger et al, Journal of Maternal and Child Health, 2017

<sup>2</sup> American Academy of Pediatrics, Policy statement, 2012

### WHO WE SERVED



1,870

Women, infants and children participated in WIC

36%

of all pregnant women served by WIC

1,081

WIC families served



80%

are working families

3 OUT OF 4

participants are infants and children under five



### BREASTFEEDING

96%

of WIC moms start out breastfeeding

39%

of WIC moms breastfeed exclusively for six months



# 2024 OREGON WIC DATA

## COOS COUNTY HEALTH & WELLNESS

### ECONOMIC BENEFITS OF WIC

#### 12 LOCAL STORES ACCEPTING WIC:

- 7 Independent store
- 0 Local or regional chains
- 3 National chain stores
- 2 Pharmacies

## \$1,017,179

Total WIC dollars spent  
by participants  
at local stores

#### ALL STORES THAT ACCEPT WIC MUST CARRY:

- At least 8 kinds of fresh fruits and vegetables
- Whole grain products
- Lowfat milk
- Lowfat yogurt
- Canned or dried beans



#### WIC FARM DIRECT NUTRITION PROGRAM

The Farm Direct Nutrition Program (FDNP) provides families with an additional source of nutritious food and education on selecting and preparing fresh produce.

## 9 PARTICIPATING FARMERS

at local farmers markets  
and farm stands

## \$9,824

FDNP dollars paid  
to local farmers

#### WIC CLINIC SITES

Bandon, Coos Bay, Coquille, Coquille Tribe, Lakeside, Myrtle Point, Powers

*For more details about these numbers, please visit:*

<https://www.oregon.gov/OHA/PH/HEALTHYPEOPLEFAMILIES/WIC/Pages/annual.aspx>

**541-266-6705**

<https://cooshealthandwellness.org/public-health/clinical-services/women-infants-and-children/>

You can get this document in a different format free of charge. Call 971-673-0040 (voice) or 1-800-735-2900 (TTY) to arrange for the format that will work best for you.

Revised 3/19/2025

# 2024 OREGON WIC DATA

## CROOK COUNTY HEALTH DEPARTMENT

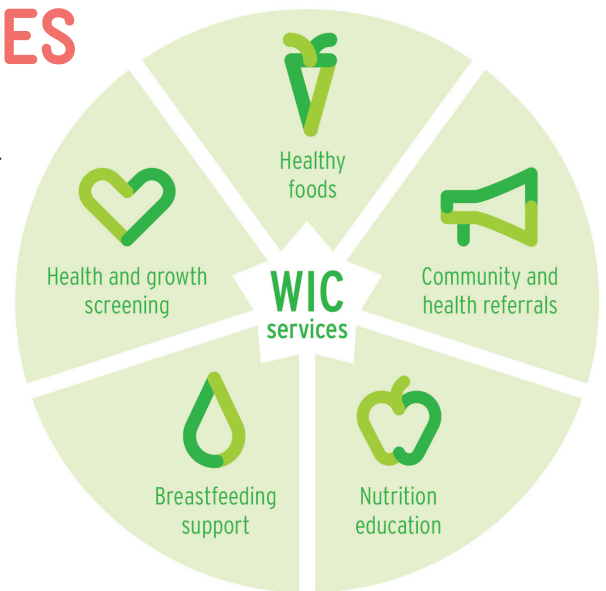
### GROWING HEALTHY FUTURES

Participating in WIC supports the long-term health of women, infants, children and families. WIC is proven to support longer pregnancies and positive birth outcomes<sup>1</sup>.

The American Academy of Pediatrics identifies three foundations of healthy child development:

- **Stable, Responsive Relationships**
- **Safe, Supportive Environments**
- **Appropriate Nutrition<sup>2</sup>**

WIC is the premier public health nutrition program and it supports all three of these developmental foundations.



<sup>1</sup> Finger et al, Journal of Maternal and Child Health, 2017

<sup>2</sup> American Academy of Pediatrics, Policy statement, 2012

### WHO WE SERVED



1,098

Women, infants and children participated in WIC

41%

of all pregnant women served by WIC

606

WIC families served



58%

are working families

3 OUT OF 4

participants are infants and children under five



### BREASTFEEDING

99%

of WIC moms start out breastfeeding

38%

of WIC moms breastfeed exclusively for six months

# 2024 OREGON WIC DATA

## CROOK COUNTY HEALTH DEPARTMENT

### ECONOMIC BENEFITS OF WIC

#### 4 LOCAL STORES ACCEPTING WIC:

- 3 Independent store
- 1 Local or regional chains
- 0 National chain stores
- 0 Pharmacies

## \$614,221

Total WIC dollars spent  
by participants  
at local stores

#### ALL STORES THAT ACCEPT WIC MUST CARRY:

- At least 8 kinds of fresh fruits and vegetables
- Whole grain products
- Lowfat milk
- Lowfat yogurt
- Canned or dried beans



#### WIC FARM DIRECT NUTRITION PROGRAM

The Farm Direct Nutrition Program (FDNP) provides families with an additional source of nutritious food and education on selecting and preparing fresh produce.

## 2 PARTICIPATING FARMERS

at local farmers markets  
and farm stands

## \$8,768

FDNP dollars paid  
to local farmers

#### WIC CLINIC SITES

Mitchell, Prineville

*For more details about these numbers, please visit:*

<https://www.oregon.gov/OHA/PH/HEALTHYPEOPLEFAMILIES/WIC/Pages/annual.aspx>

**541-447-5165**

[www.co.crook.or.us/Departments/Health/WIC/tabid/152/Default.aspx](http://www.co.crook.or.us/Departments/Health/WIC/tabid/152/Default.aspx)

You can get this document in a different format free of charge. Call 971-673-0040 (voice) or 1-800-735-2900 (TTY) to arrange for the format that will work best for you.

Revised 3/19/2025



# 2024 OREGON WIC DATA

## DESCHUTES COUNTY HEALTH SERVICES

### GROWING HEALTHY FUTURES

Participating in WIC supports the long-term health of women, infants, children and families. WIC is proven to support longer pregnancies and positive birth outcomes<sup>1</sup>.

The American Academy of Pediatrics identifies three foundations of healthy child development:

- **Stable, Responsive Relationships**
- **Safe, Supportive Environments**
- **Appropriate Nutrition<sup>2</sup>**

WIC is the premier public health nutrition program and it supports all three of these developmental foundations.



<sup>1</sup> Finger et al, Journal of Maternal and Child Health, 2017

<sup>2</sup> American Academy of Pediatrics, Policy statement, 2012

### WHO WE SERVED



# 5,088

Women, infants and children participated in WIC

# 28%

of all pregnant women served by WIC

# 2,880

WIC families served



# 87%

are working families

# 3 OUT OF 4

participants are infants and children under five



### BREASTFEEDING

# 96%

of WIC moms start out breastfeeding

# 41%

of WIC moms breastfeed exclusively for six months

# 2024 OREGON WIC DATA

## DESCHUTES COUNTY HEALTH SERVICES

### ECONOMIC BENEFITS OF WIC

#### 24 LOCAL STORES ACCEPTING WIC:

- 7 Independent store
- 3 Local or regional chains
- 12 National chain stores
- 2 Pharmacies

## \$2,642,248

Total WIC dollars spent  
by participants  
at local stores

#### ALL STORES THAT ACCEPT WIC MUST CARRY:

- At least 8 kinds of fresh fruits and vegetables
- Whole grain products
- Lowfat milk
- Lowfat yogurt
- Canned or dried beans



#### WIC FARM DIRECT NUTRITION PROGRAM

The Farm Direct Nutrition Program (FDNP) provides families with an additional source of nutritious food and education on selecting and preparing fresh produce.

## 28 PARTICIPATING FARMERS

at local farmers markets  
and farm stands

## \$32,920

FDNP dollars paid  
to local farmers

#### WIC CLINIC SITES

Bend, La Pine, Ponderosa Height, Redmond, Stillwater

*For more details about these numbers, please visit:*

<https://www.oregon.gov/OHA/PH/HEALTHYPEOPLEFAMILIES/WIC/Pages/annual.aspx>

**541-322-7400**

[www.deschutes.org/health/page/women-infants-and-children-wic](http://www.deschutes.org/health/page/women-infants-and-children-wic)

You can get this document in a different format free of charge. Call 971-673-0040 (voice) or 1-800-735-2900 (TTY) to arrange for the format that will work best for you.

*Revised 3/19/2025*

# 2024 OREGON WIC DATA

## DOUGLAS COUNTY WIC, A PROGRAM OF UCAN

### GROWING HEALTHY FUTURES

Participating in WIC supports the long-term health of women, infants, children and families. WIC is proven to support longer pregnancies and positive birth outcomes<sup>1</sup>.

The American Academy of Pediatrics identifies three foundations of healthy child development:

- **Stable, Responsive Relationships**
- **Safe, Supportive Environments**
- **Appropriate Nutrition<sup>2</sup>**

WIC is the premier public health nutrition program and it supports all three of these developmental foundations.



<sup>1</sup> Finger et al, *Journal of Maternal and Child Health*, 2017

<sup>2</sup> American Academy of Pediatrics, *Policy statement*, 2012

### WHO WE SERVED



# 4,259

Women, infants and children participated in WIC

# 41%

of all pregnant women served by WIC

# 2,376

WIC families served



# 74%

are working families

# 3 OUT OF 4

participants are infants and children under five



### BREASTFEEDING

# 95%

of WIC moms start out breastfeeding

# 38%

of WIC moms breastfeed exclusively for six months



# 2024 OREGON WIC DATA

## DOUGLAS COUNTY WIC, A PROGRAM OF UCAN

### ECONOMIC BENEFITS OF WIC

#### 21 LOCAL STORES ACCEPTING WIC:

- 9 Independent store
- 7 Local or regional chains
- 3 National chain stores
- 2 Pharmacies

## \$2,406,250

Total WIC dollars spent  
by participants  
at local stores

#### ALL STORES THAT ACCEPT WIC MUST CARRY:

- At least 8 kinds of fresh fruits and vegetables
- Whole grain products
- Lowfat milk
- Lowfat yogurt
- Canned or dried beans



#### WIC FARM DIRECT NUTRITION PROGRAM

The Farm Direct Nutrition Program (FDNP) provides families with an additional source of nutritious food and education on selecting and preparing fresh produce.

## 33 PARTICIPATING FARMERS

at local farmers markets  
and farm stands

## \$30,380

FDNP dollars paid  
to local farmers

#### WIC CLINIC SITES

Camas Valley, Canyonville, Drain, Glendale, Glide, Myrtle Creek, Reedsport, Roseburg, Sutherlin

*For more details about these numbers, please visit:*

<https://www.oregon.gov/OHA/PH/HEALTHYPEOPLEFAMILIES/WIC/Pages/annual.aspx>

**541-440-3516**

[www.ucancap.org/need-help/getting-wic-services/](http://www.ucancap.org/need-help/getting-wic-services/)

You can get this document in a different format free of charge. Call 971-673-0040 (voice) or 1-800-735-2900 (TTY) to arrange for the format that will work best for you.

Revised 3/19/2025

# 2024 OREGON WIC DATA

## GILLIAM COUNTY HEALTH DEPARTMENT

### GROWING HEALTHY FUTURES

Participating in WIC supports the long-term health of women, infants, children and families. WIC is proven to support longer pregnancies and positive birth outcomes<sup>1</sup>.

The American Academy of Pediatrics identifies three foundations of healthy child development:

- **Stable, Responsive Relationships**
- **Safe, Supportive Environments**
- **Appropriate Nutrition<sup>2</sup>**

WIC is the premier public health nutrition program and it supports all three of these developmental foundations.



<sup>1</sup> Finger et al, Journal of Maternal and Child Health, 2017

<sup>2</sup> American Academy of Pediatrics, Policy statement, 2012

### WHO WE SERVED



# 55

Women, infants and children participated in WIC

# 50%

of all pregnant women served by WIC

# 24

WIC families served



# 42%

are working families

# 3 OUT OF 4

participants are infants and children under five



### BREASTFEEDING

# 83%

of WIC moms start out breastfeeding

# 83%

of WIC moms breastfeed exclusively for six months

# 2024 OREGON WIC DATA

## GILLIAM COUNTY HEALTH DEPARTMENT

### ECONOMIC BENEFITS OF WIC

#### 1 LOCAL STORES ACCEPTING WIC:

- 1 Independent store
- 0 Local or regional chains
- 0 National chain stores
- 0 Pharmacies

## \$22,498

Total WIC dollars spent  
by participants  
at local stores

#### ALL STORES THAT ACCEPT WIC MUST CARRY:

- At least 8 kinds of fresh fruits and vegetables
- Whole grain products
- Lowfat milk
- Lowfat yogurt
- Canned or dried beans



#### WIC FARM DIRECT NUTRITION PROGRAM

The Farm Direct Nutrition Program (FDNP) provides families with an additional source of nutritious food and education on selecting and preparing fresh produce.

## 2 PARTICIPATING FARMERS

at local farmers markets  
and farm stands

## \$128

FDNP dollars paid  
to local farmers

#### WIC CLINIC SITES

Arlington, South Gilliam Health Center

---

*For more details about these numbers, please visit:*

<https://www.oregon.gov/OHA/PH/HEALTHYPEOPLEFAMILIES/WIC/Pages/annual.aspx>

**541-384-2418**

<https://gilliamcountypublichealth.org/wic/>

---

You can get this document in a different format free of charge. Call 971-673-0040 (voice) or 1-800-735-2900 (TTY) to arrange for the format that will work best for you.

Revised 3/19/2025



# 2024 OREGON WIC DATA

## GRANT COUNTY HEALTH DEPARTMENT

### GROWING HEALTHY FUTURES

Participating in WIC supports the long-term health of women, infants, children and families. WIC is proven to support longer pregnancies and positive birth outcomes<sup>1</sup>.

The American Academy of Pediatrics identifies three foundations of healthy child development:

- **Stable, Responsive Relationships**
- **Safe, Supportive Environments**
- **Appropriate Nutrition<sup>2</sup>**

WIC is the premier public health nutrition program and it supports all three of these developmental foundations.



<sup>1</sup> Finger et al, Journal of Maternal and Child Health, 2017

<sup>2</sup> American Academy of Pediatrics, Policy statement, 2012

### WHO WE SERVED



# 193

Women, infants and children participated in WIC

# 26%

of all pregnant women served by WIC

# 109

WIC families served



# 29%

are working families

# 3 OUT OF 4

participants are infants and children under five



### BREASTFEEDING

# 92%

of WIC moms start out breastfeeding

# 39%

of WIC moms breastfeed exclusively for six months

# 2024 OREGON WIC DATA

## GRANT COUNTY HEALTH DEPARTMENT

### ECONOMIC BENEFITS OF WIC

#### 2 LOCAL STORES ACCEPTING WIC:

- 1 Independent store
- 1 Local or regional chains
- 0 National chain stores
- 0 Pharmacies

## \$116,855

Total WIC dollars spent  
by participants  
at local stores

#### ALL STORES THAT ACCEPT WIC MUST CARRY:

- At least 8 kinds of fresh fruits and vegetables
- Whole grain products
- Lowfat milk
- Lowfat yogurt
- Canned or dried beans



#### WIC FARM DIRECT NUTRITION PROGRAM

The Farm Direct Nutrition Program (FDNP) provides families with an additional source of nutritious food and education on selecting and preparing fresh produce.

## 1 PARTICIPATING FARMERS

at local farmers markets  
and farm stands

## \$1,064

FDNP dollars paid  
to local farmers

#### WIC CLINIC SITES

John Day

---

*For more details about these numbers, please visit:*

<https://www.oregon.gov/OHA/PH/HEALTHYPEOPLEFAMILIES/WIC/Pages/annual.aspx>

**541-575-0429**

[www.granthealth.org](http://www.granthealth.org)

---

You can get this document in a different format free of charge. Call 971-673-0040 (voice) or 1-800-735-2900 (TTY) to arrange for the format that will work best for you.

Revised 3/19/2025

# 2024 OREGON WIC DATA

## HARNEY COUNTY HEALTH DEPARTMENT

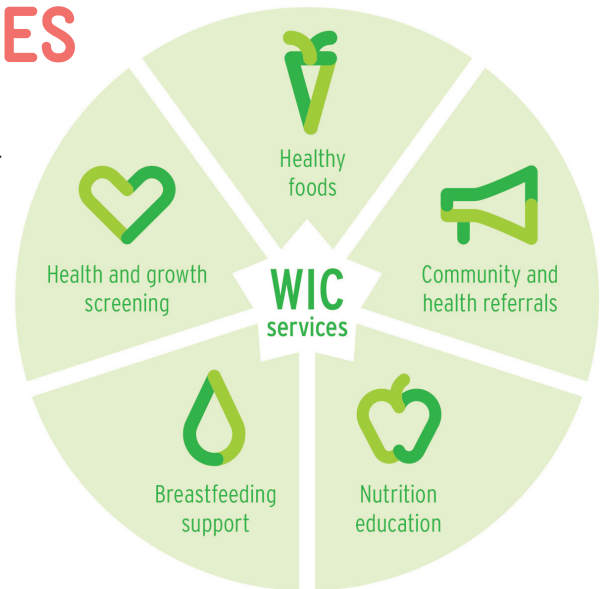
### GROWING HEALTHY FUTURES

Participating in WIC supports the long-term health of women, infants, children and families. WIC is proven to support longer pregnancies and positive birth outcomes<sup>1</sup>.

The American Academy of Pediatrics identifies three foundations of healthy child development:

- **Stable, Responsive Relationships**
- **Safe, Supportive Environments**
- **Appropriate Nutrition<sup>2</sup>**

WIC is the premier public health nutrition program and it supports all three of these developmental foundations.



<sup>1</sup> Finger et al, Journal of Maternal and Child Health, 2017

<sup>2</sup> American Academy of Pediatrics, Policy statement, 2012

### WHO WE SERVED



# 279

Women, infants and children participated in WIC

# 35%

of all pregnant women served by WIC

# 157

WIC families served



# 47%

are working families

# 3 OUT OF 4

participants are infants and children under five



### BREASTFEEDING

# 93%

of WIC moms start out breastfeeding

# 18%

of WIC moms breastfeed exclusively for six months



# 2024 OREGON WIC DATA

## HARNEY COUNTY HEALTH DEPARTMENT

### ECONOMIC BENEFITS OF WIC

#### 1 LOCAL STORES ACCEPTING WIC:

- 0 Independent store
- 0 Local or regional chains
- 1 National chain stores
- 0 Pharmacies

# \$140,073

Total WIC dollars spent  
by participants  
at local stores

#### ALL STORES THAT ACCEPT WIC MUST CARRY:

- At least 8 kinds of fresh fruits and vegetables
- Whole grain products
- Lowfat milk
- Lowfat yogurt
- Canned or dried beans



#### WIC FARM DIRECT NUTRITION PROGRAM

The Farm Direct Nutrition Program (FDNP) provides families with an additional source of nutritious food and education on selecting and preparing fresh produce.

# 7

**PARTICIPATING  
FARMERS**

at local farmers markets  
and farm stands

# \$1,068

FDNP dollars paid  
to local farmers

#### WIC CLINIC SITES

Harney, Waditika Tribal Health Center

---

*For more details about these numbers, please visit:*

<https://www.oregon.gov/OHA/PH/HEALTHYPEOPLEFAMILIES/WIC/Pages/annual.aspx>

**541-573-2271**

<https://harneycountyor.gov/women-infants-children-wic/>

---

You can get this document in a different format free of charge. Call 971-673-0040 (voice) or 1-800-735-2900 (TTY) to arrange for the format that will work best for you.

Revised 3/19/2025

# 2024 OREGON WIC DATA

## HOOD RIVER COUNTY HEALTH DEPARTMENT

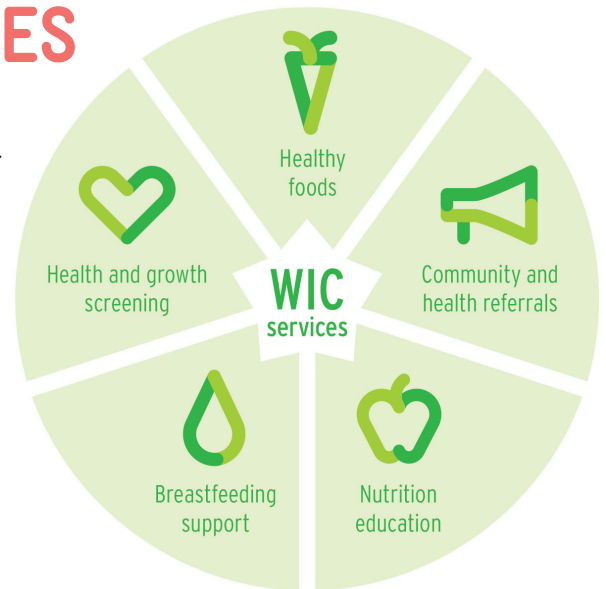
### GROWING HEALTHY FUTURES

Participating in WIC supports the long-term health of women, infants, children and families. WIC is proven to support longer pregnancies and positive birth outcomes<sup>1</sup>.

The American Academy of Pediatrics identifies three foundations of healthy child development:

- **Stable, Responsive Relationships**
- **Safe, Supportive Environments**
- **Appropriate Nutrition<sup>2</sup>**

WIC is the premier public health nutrition program and it supports all three of these developmental foundations.



<sup>1</sup> Finger et al, Journal of Maternal and Child Health, 2017

<sup>2</sup> American Academy of Pediatrics, Policy statement, 2012

### WHO WE SERVED



# 831

Women, infants and children participated in WIC

# 39%

of all pregnant women served by WIC

# 536

WIC families served



# 90%

are working families

# 3 OUT OF 4

participants are infants and children under five



### BREASTFEEDING

# 100%

of WIC moms start out breastfeeding

# 46%

of WIC moms breastfeed exclusively for six months

# 2024 OREGON WIC DATA

## HOOD RIVER COUNTY HEALTH DEPARTMENT

### ECONOMIC BENEFITS OF WIC

#### 8 LOCAL STORES ACCEPTING WIC:

- 5 Independent store
- 1 Local or regional chains
- 1 National chain stores
- 1 Pharmacies

## \$467,316

Total WIC dollars spent  
by participants  
at local stores

#### ALL STORES THAT ACCEPT WIC MUST CARRY:

- At least 8 kinds of fresh fruits and vegetables
- Whole grain products
- Lowfat milk
- Lowfat yogurt
- Canned or dried beans



#### WIC FARM DIRECT NUTRITION PROGRAM

The Farm Direct Nutrition Program (FDNP) provides families with an additional source of nutritious food and education on selecting and preparing fresh produce.

## 26 PARTICIPATING FARMERS

at local farmers markets  
and farm stands

## \$3,908

FDNP dollars paid  
to local farmers

#### WIC CLINIC SITES

Cascade Locks, Hood River, Parkdale

*For more details about these numbers, please visit:*

<https://www.oregon.gov/OHA/PH/HEALTHYPEOPLEFAMILIES/WIC/Pages/annual.aspx>

**541-387-6882**

[www.co.hood-river.or.us/index.asp?Type=B\\_BASIC&SEC={88E4CED7-3C8F-4074-9C7A-](http://www.co.hood-river.or.us/index.asp?Type=B_BASIC&SEC={88E4CED7-3C8F-4074-9C7A-)

You can get this document in a different format free of charge. Call 971-673-0040 (voice) or 1-800-735-2900 (TTY) to arrange for the format that will work best for you.

Revised 3/19/2025



# 2024 OREGON WIC DATA

## JACKSON COUNTY HEALTH AND HUMAN SERVICES

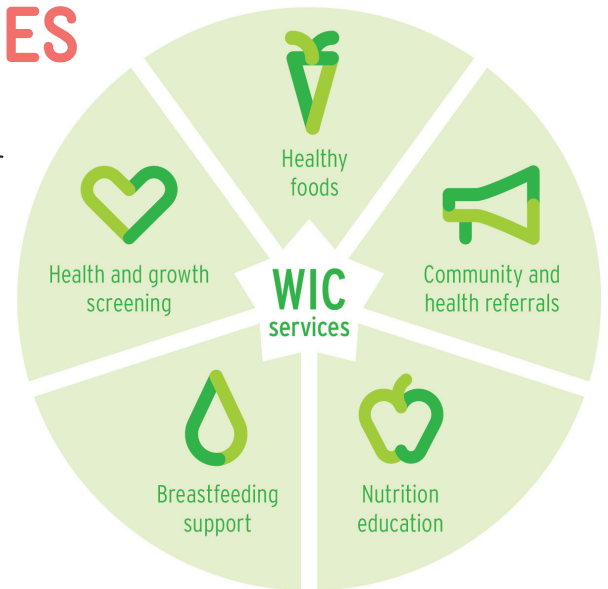
### GROWING HEALTHY FUTURES

Participating in WIC supports the long-term health of women, infants, children and families. WIC is proven to support longer pregnancies and positive birth outcomes<sup>1</sup>.

The American Academy of Pediatrics identifies three foundations of healthy child development:

- **Stable, Responsive Relationships**
- **Safe, Supportive Environments**
- **Appropriate Nutrition<sup>2</sup>**

WIC is the premier public health nutrition program and it supports all three of these developmental foundations.



<sup>1</sup> Finger et al, Journal of Maternal and Child Health, 2017

<sup>2</sup> American Academy of Pediatrics, Policy statement, 2012

### WHO WE SERVED



7,349

Women, infants and children participated in WIC

40%

of all pregnant women served by WIC

4,222

WIC families served



85%

are working families

3 OUT OF 4

participants are infants and children under five



### BREASTFEEDING

99%

of WIC moms start out breastfeeding

46%

of WIC moms breastfeed exclusively for six months

# 2024 OREGON WIC DATA

## JACKSON COUNTY HEALTH AND HUMAN SERVICES

### ECONOMIC BENEFITS OF WIC

#### 37 LOCAL STORES ACCEPTING WIC:

- 8 Independent store
- 16 Local or regional chains
- 10 National chain stores
- 3 Pharmacies

## \$4,003,485

Total WIC dollars spent  
by participants  
at local stores

#### ALL STORES THAT ACCEPT WIC MUST CARRY:

- At least 8 kinds of fresh fruits and vegetables
- Whole grain products
- Lowfat milk
- Lowfat yogurt
- Canned or dried beans



#### WIC FARM DIRECT NUTRITION PROGRAM

The Farm Direct Nutrition Program (FDNP) provides families with an additional source of nutritious food and education on selecting and preparing fresh produce.

## 35 PARTICIPATING FARMERS

at local farmers markets  
and farm stands

## \$32,124

FDNP dollars paid  
to local farmers

#### WIC CLINIC SITES

Medford, Rogue Family Center

---

*For more details about these numbers, please visit:*

<https://www.oregon.gov/OHA/PH/HEALTHYPEOPLEFAMILIES/WIC/Pages/annual.aspx>

**541-774-8203**

[https://www.jacksoncountyor.gov/departments/health\\_human\\_services/programs\\_and\\_ser-](https://www.jacksoncountyor.gov/departments/health_human_services/programs_and_ser-)

---

You can get this document in a different format free of charge. Call 971-673-0040 (voice) or 1-800-735-2900 (TTY) to arrange for the format that will work best for you.

Revised 3/19/2025

# 2024 OREGON WIC DATA

## JEFFERSON COUNTY PUBLIC HEALTH

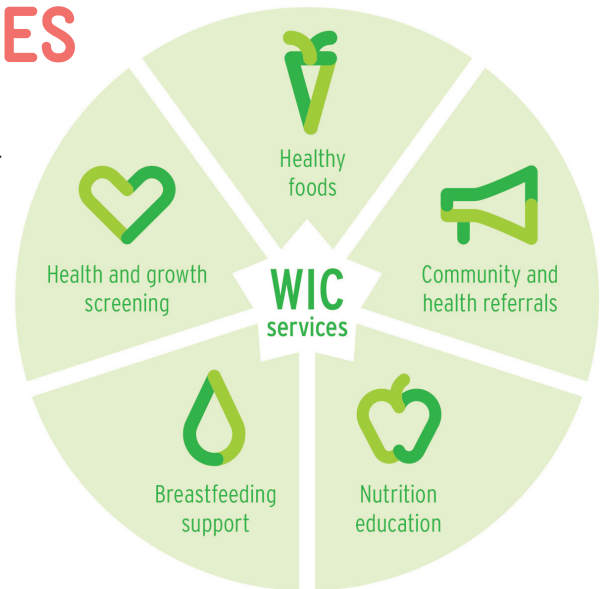
### GROWING HEALTHY FUTURES

Participating in WIC supports the long-term health of women, infants, children and families. WIC is proven to support longer pregnancies and positive birth outcomes<sup>1</sup>.

The American Academy of Pediatrics identifies three foundations of healthy child development:

- **Stable, Responsive Relationships**
- **Safe, Supportive Environments**
- **Appropriate Nutrition<sup>2</sup>**

WIC is the premier public health nutrition program and it supports all three of these developmental foundations.



<sup>1</sup> Finger et al, Journal of Maternal and Child Health, 2017

<sup>2</sup> American Academy of Pediatrics, Policy statement, 2012

### WHO WE SERVED



1,012

Women, infants and children participated in WIC

55%

of all pregnant women served by WIC

544

WIC families served



54%

are working families

3 OUT OF 4

participants are infants and children under five



### BREASTFEEDING

99%

of WIC moms start out breastfeeding

39%

of WIC moms breastfeed exclusively for six months



# 2024 OREGON WIC DATA

## JEFFERSON COUNTY PUBLIC HEALTH

### ECONOMIC BENEFITS OF WIC

#### 4 LOCAL STORES ACCEPTING WIC:

- 2 Independent store
- 1 Local or regional chains
- 1 National chain stores
- 0 Pharmacies

## \$561,020

Total WIC dollars spent  
by participants  
at local stores

#### ALL STORES THAT ACCEPT WIC MUST CARRY:

- At least 8 kinds of fresh fruits and vegetables
- Whole grain products
- Lowfat milk
- Lowfat yogurt
- Canned or dried beans



#### WIC FARM DIRECT NUTRITION PROGRAM

The Farm Direct Nutrition Program (FDNP) provides families with an additional source of nutritious food and education on selecting and preparing fresh produce.

## 6 PARTICIPATING FARMERS

at local farmers markets  
and farm stands

## \$5,376

FDNP dollars paid  
to local farmers

#### WIC CLINIC SITES

Madras

---

*For more details about these numbers, please visit:*

<https://www.oregon.gov/OHA/PH/HEALTHYPEOPLEFAMILIES/WIC/Pages/annual.aspx>

**541-475-4456**

<https://www.jeffco.net/publichealth/page/wic>

---

You can get this document in a different format free of charge. Call 971-673-0040 (voice) or 1-800-735-2900 (TTY) to arrange for the format that will work best for you.

Revised 3/19/2025

# 2024 OREGON WIC DATA

## JOSEPHINE COUNTY HEALTH DEPARTMENT

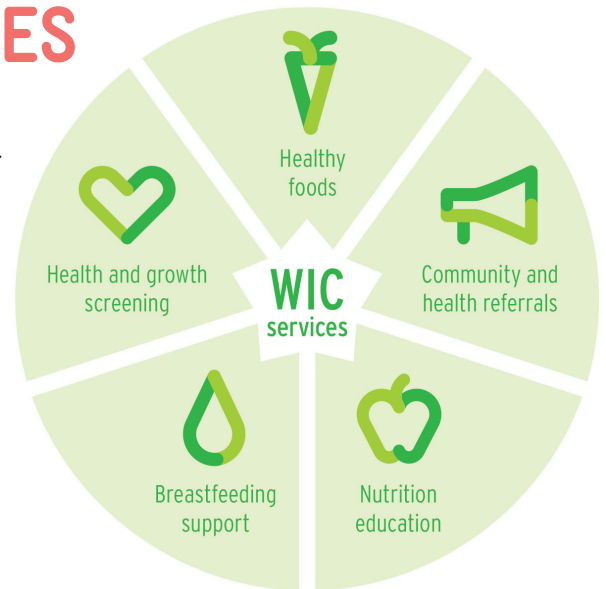
### GROWING HEALTHY FUTURES

Participating in WIC supports the long-term health of women, infants, children and families. WIC is proven to support longer pregnancies and positive birth outcomes<sup>1</sup>.

The American Academy of Pediatrics identifies three foundations of healthy child development:

- **Stable, Responsive Relationships**
- **Safe, Supportive Environments**
- **Appropriate Nutrition<sup>2</sup>**

WIC is the premier public health nutrition program and it supports all three of these developmental foundations.



<sup>1</sup> Finger et al, Journal of Maternal and Child Health, 2017

<sup>2</sup> American Academy of Pediatrics, Policy statement, 2012

### WHO WE SERVED



3,722

Women, infants and children participated in WIC

43%

of all pregnant women served by WIC

2,134

WIC families served



57%

are working families

3 OUT OF 4

participants are infants and children under five



### BREASTFEEDING

99%

of WIC moms start out breastfeeding

46%

of WIC moms breastfeed exclusively for six months

# 2024 OREGON WIC DATA

## JOSEPHINE COUNTY HEALTH DEPARTMENT

### ECONOMIC BENEFITS OF WIC

#### 13 LOCAL STORES ACCEPTING WIC:

- 4 Independent store
- 5 Local or regional chains
- 3 National chain stores
- 1 Pharmacies

## \$2,052,784

Total WIC dollars spent  
by participants  
at local stores

#### ALL STORES THAT ACCEPT WIC MUST CARRY:

- At least 8 kinds of fresh fruits and vegetables
- Whole grain products
- Lowfat milk
- Lowfat yogurt
- Canned or dried beans



#### WIC FARM DIRECT NUTRITION PROGRAM

The Farm Direct Nutrition Program (FDNP) provides families with an additional source of nutritious food and education on selecting and preparing fresh produce.

## 29 PARTICIPATING FARMERS

at local farmers markets  
and farm stands

## \$23,208

FDNP dollars paid  
to local farmers

#### WIC CLINIC SITES

Brookings, Cave Junction, Gold Beach, Grants Pass, Port Orford

*For more details about these numbers, please visit:*

<https://www.oregon.gov/OHA/PH/HEALTHYPEOPLEFAMILIES/WIC/Pages/annual.aspx>

**Phone: 541-474-5333 Text: 541-295-5506**

[www.co.josephine.or.us/Page.asp?NavID=255](http://www.co.josephine.or.us/Page.asp?NavID=255)

You can get this document in a different format free of charge. Call 971-673-0040 (voice) or 1-800-735-2900 (TTY) to arrange for the format that will work best for you.

Revised 3/19/2025



# 2024 OREGON WIC DATA

## KLAMATH COUNTY PUBLIC HEALTH

### GROWING HEALTHY FUTURES

Participating in WIC supports the long-term health of women, infants, children and families. WIC is proven to support longer pregnancies and positive birth outcomes<sup>1</sup>.

The American Academy of Pediatrics identifies three foundations of healthy child development:

- **Stable, Responsive Relationships**
- **Safe, Supportive Environments**
- **Appropriate Nutrition<sup>2</sup>**

WIC is the premier public health nutrition program and it supports all three of these developmental foundations.



<sup>1</sup> Finger et al, Journal of Maternal and Child Health, 2017

<sup>2</sup> American Academy of Pediatrics, Policy statement, 2012

### WHO WE SERVED



3,030

Women, infants and children participated in WIC

43%

of all pregnant women served by WIC

1,753

WIC families served



66%

are working families

3 OUT OF 4

participants are infants and children under five



### BREASTFEEDING

97%

of WIC moms start out breastfeeding

30%

of WIC moms breastfeed exclusively for six months

# 2024 OREGON WIC DATA

## KLAMATH COUNTY PUBLIC HEALTH

### ECONOMIC BENEFITS OF WIC

#### 7 LOCAL STORES ACCEPTING WIC:

- 3 Independent store
- 1 Local or regional chains
- 3 National chain stores
- 0 Pharmacies

## \$1,658,307

Total WIC dollars spent  
by participants  
at local stores

#### ALL STORES THAT ACCEPT WIC MUST CARRY:

- At least 8 kinds of fresh fruits and vegetables
- Whole grain products
- Lowfat milk
- Lowfat yogurt
- Canned or dried beans



#### WIC FARM DIRECT NUTRITION PROGRAM

The Farm Direct Nutrition Program (FDNP) provides families with an additional source of nutritious food and education on selecting and preparing fresh produce.

## 28 PARTICIPATING FARMERS

at local farmers markets  
and farm stands

## \$11,004

FDNP dollars paid  
to local farmers

#### WIC CLINIC SITES

Chiloquin, Klamath Falls, Malin, Merrill

*For more details about these numbers, please visit:*

<https://www.oregon.gov/OHA/PH/HEALTHYPEOPLEFAMILIES/WIC/Pages/annual.aspx>

**541-883-4276**

<https://www.klamathcounty.org/418/Women-Infants-Children-WIC>

You can get this document in a different format free of charge. Call 971-673-0040 (voice) or 1-800-735-2900 (TTY) to arrange for the format that will work best for you.

Revised 3/19/2025

# 2024 OREGON WIC DATA

## LAKE COUNTY PUBLIC HEALTH

### GROWING HEALTHY FUTURES

Participating in WIC supports the long-term health of women, infants, children and families. WIC is proven to support longer pregnancies and positive birth outcomes<sup>1</sup>.

The American Academy of Pediatrics identifies three foundations of healthy child development:

- **Stable, Responsive Relationships**
- **Safe, Supportive Environments**
- **Appropriate Nutrition<sup>2</sup>**

WIC is the premier public health nutrition program and it supports all three of these developmental foundations.



<sup>1</sup> Finger et al, Journal of Maternal and Child Health, 2017

<sup>2</sup> American Academy of Pediatrics, Policy statement, 2012

### WHO WE SERVED



# 203

Women, infants and children participated in WIC

# 31%

of all pregnant women served by WIC

# 120

WIC families served



# 30%

are working families

# 3 OUT OF 4

participants are infants and children under five



### BREASTFEEDING

# 100%

of WIC moms start out breastfeeding

# 39%

of WIC moms breastfeed exclusively for six months



# 2024 OREGON WIC DATA

## LAKE COUNTY PUBLIC HEALTH

### ECONOMIC BENEFITS OF WIC

#### 3 LOCAL STORES ACCEPTING WIC:

- 2 Independent store
- 0 Local or regional chains
- 1 National chain stores
- 0 Pharmacies

## \$105,843

Total WIC dollars spent  
by participants  
at local stores

#### ALL STORES THAT ACCEPT WIC MUST CARRY:

- At least 8 kinds of fresh fruits and vegetables
- Whole grain products
- Lowfat milk
- Lowfat yogurt
- Canned or dried beans



#### WIC FARM DIRECT NUTRITION PROGRAM

The Farm Direct Nutrition Program (FDNP) provides families with an additional source of nutritious food and education on selecting and preparing fresh produce.

## 3 PARTICIPATING FARMERS

at local farmers markets  
and farm stands

## \$1,432

FDNP dollars paid  
to local farmers

#### WIC CLINIC SITES

Christmas Valley, Lake County

*For more details about these numbers, please visit:*

<https://www.oregon.gov/OHA/PH/HEALTHYPEOPLEFAMILIES/WIC/Pages/annual.aspx>

**541-947-6045**

[https://www.wicprograms.org/li/lake\\_county\\_wic\\_clinic\\_97630](https://www.wicprograms.org/li/lake_county_wic_clinic_97630)

You can get this document in a different format free of charge. Call 971-673-0040 (voice) or 1-800-735-2900 (TTY) to arrange for the format that will work best for you.

Revised 3/19/2025

# 2024 OREGON WIC DATA

## LANE COUNTY HEALTH AND HUMAN SERVICES

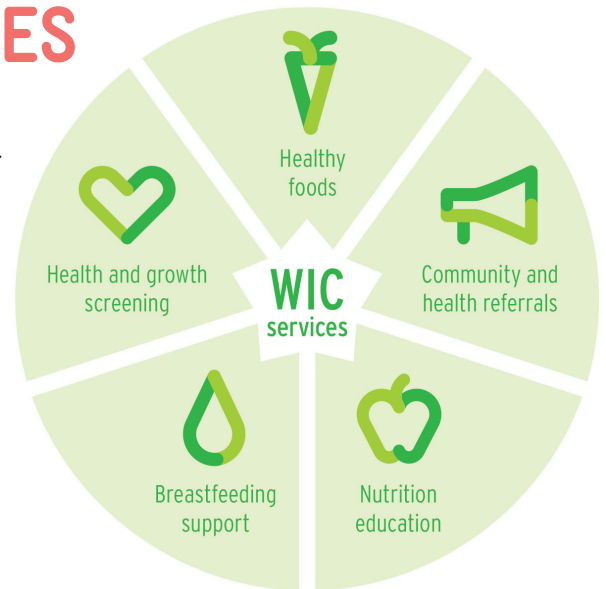
### GROWING HEALTHY FUTURES

Participating in WIC supports the long-term health of women, infants, children and families. WIC is proven to support longer pregnancies and positive birth outcomes<sup>1</sup>.

The American Academy of Pediatrics identifies three foundations of healthy child development:

- **Stable, Responsive Relationships**
- **Safe, Supportive Environments**
- **Appropriate Nutrition<sup>2</sup>**

WIC is the premier public health nutrition program and it supports all three of these developmental foundations.



<sup>1</sup> Finger et al, Journal of Maternal and Child Health, 2017

<sup>2</sup> American Academy of Pediatrics, Policy statement, 2012

### WHO WE SERVED



# 9,333

Women, infants and children participated in WIC

# 33%

of all pregnant women served by WIC

# 5,443

WIC families served



# 70%

are working families

# 3 OUT OF 4

participants are infants and children under five



### BREASTFEEDING

# 96%

of WIC moms start out breastfeeding

# 41%

of WIC moms breastfeed exclusively for six months

# 2024 OREGON WIC DATA

## LANE COUNTY HEALTH AND HUMAN SERVICES

### ECONOMIC BENEFITS OF WIC

#### 44 LOCAL STORES ACCEPTING WIC:

- 5 Independent store
- 20 Local or regional chains
- 13 National chain stores
- 6 Pharmacies

## \$4,941,012

Total WIC dollars spent  
by participants  
at local stores

#### ALL STORES THAT ACCEPT WIC MUST CARRY:

- At least 8 kinds of fresh fruits and vegetables
- Whole grain products
- Lowfat milk
- Lowfat yogurt
- Canned or dried beans



#### WIC FARM DIRECT NUTRITION PROGRAM

The Farm Direct Nutrition Program (FDNP) provides families with an additional source of nutritious food and education on selecting and preparing fresh produce.

## 74

**PARTICIPATING  
FARMERS**

at local farmers markets  
and farm stands

## \$68,188

FDNP dollars paid  
to local farmers

#### WIC CLINIC SITES

Cottage Grove, Eugene, Florence, Oakridge

---

*For more details about these numbers, please visit:*

<https://www.oregon.gov/OHA/PH/HEALTHYPEOPLEFAMILIES/WIC/Pages/annual.aspx>

**541-682-4202**

[https://lanecounty.org/government/county\\_departments/health\\_and\\_human\\_services/public\\_](https://lanecounty.org/government/county_departments/health_and_human_services/public_)

---

You can get this document in a different format free of charge. Call 971-673-0040 (voice) or 1-800-735-2900 (TTY) to arrange for the format that will work best for you.

Revised 3/19/2025



# 2024 OREGON WIC DATA

## LINCOLN COUNTY HEALTH & HUMAN SERVICES

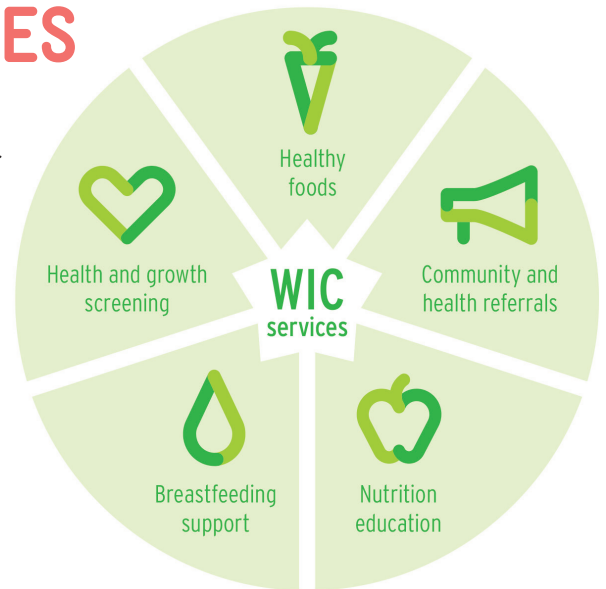
### GROWING HEALTHY FUTURES

Participating in WIC supports the long-term health of women, infants, children and families. WIC is proven to support longer pregnancies and positive birth outcomes<sup>1</sup>.

The American Academy of Pediatrics identifies three foundations of healthy child development:

- **Stable, Responsive Relationships**
- **Safe, Supportive Environments**
- **Appropriate Nutrition<sup>2</sup>**

WIC is the premier public health nutrition program and it supports all three of these developmental foundations.



<sup>1</sup> Finger et al, Journal of Maternal and Child Health, 2017

<sup>2</sup> American Academy of Pediatrics, Policy statement, 2012

### WHO WE SERVED



1,513

Women, infants and children participated in WIC

46%

of all pregnant women served by WIC

889

WIC families served



53%

are working families

3 OUT OF 4

participants are infants and children under five



### BREASTFEEDING

95%

of WIC moms start out breastfeeding

40%

of WIC moms breastfeed exclusively for six months

# 2024 OREGON WIC DATA

## LINCOLN COUNTY HEALTH & HUMAN SERVICES

### ECONOMIC BENEFITS OF WIC

#### 16 LOCAL STORES ACCEPTING WIC:

- 7 Independent store
- 5 Local or regional chains
- 2 National chain stores
- 2 Pharmacies

## \$795,071

Total WIC dollars spent  
by participants  
at local stores

#### ALL STORES THAT ACCEPT WIC MUST CARRY:

- At least 8 kinds of fresh fruits and vegetables
- Whole grain products
- Lowfat milk
- Lowfat yogurt
- Canned or dried beans



#### WIC FARM DIRECT NUTRITION PROGRAM

The Farm Direct Nutrition Program (FDNP) provides families with an additional source of nutritious food and education on selecting and preparing fresh produce.

## 5 PARTICIPATING FARMERS

at local farmers markets  
and farm stands

## \$7,700

FDNP dollars paid  
to local farmers

#### WIC CLINIC SITES

Lincoln City, Newport, Siletz, Waldport

---

*For more details about these numbers, please visit:*

<https://www.oregon.gov/OHA/PH/HEALTHYPEOPLEFAMILIES/WIC/Pages/annual.aspx>

**541-265-4163**

<https://www.co.lincoln.or.us/682/Women-Infants-Children-WIC>

---

You can get this document in a different format free of charge. Call 971-673-0040 (voice) or 1-800-735-2900 (TTY) to arrange for the format that will work best for you.

Revised 3/19/2025

# 2024 OREGON WIC DATA

## LINN COUNTY HEALTH DEPARTMENT

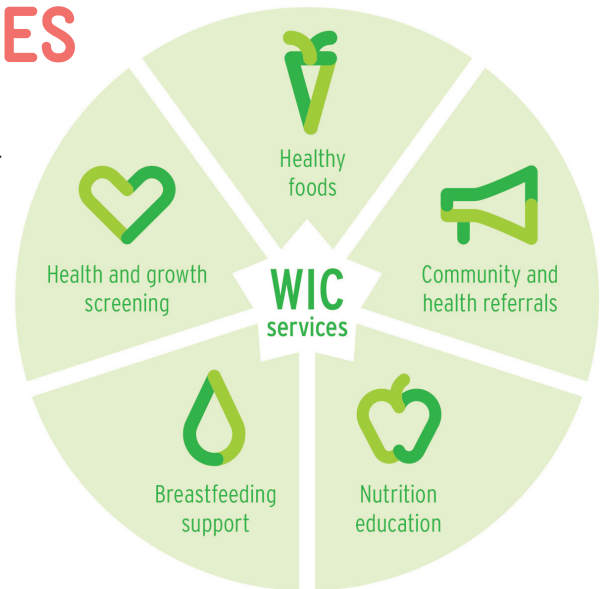
### GROWING HEALTHY FUTURES

Participating in WIC supports the long-term health of women, infants, children and families. WIC is proven to support longer pregnancies and positive birth outcomes<sup>1</sup>.

The American Academy of Pediatrics identifies three foundations of healthy child development:

- **Stable, Responsive Relationships**
- **Safe, Supportive Environments**
- **Appropriate Nutrition<sup>2</sup>**

WIC is the premier public health nutrition program and it supports all three of these developmental foundations.



<sup>1</sup> Finger et al, Journal of Maternal and Child Health, 2017

<sup>2</sup> American Academy of Pediatrics, Policy statement, 2012

### WHO WE SERVED



# 4,346

Women, infants and children participated in WIC

# 31%

of all pregnant women served by WIC

# 2,418

WIC families served



# 78%

are working families

# 3 OUT OF 4

participants are infants and children under five



### BREASTFEEDING

# 96%

of WIC moms start out breastfeeding

# 36%

of WIC moms breastfeed exclusively for six months



# 2024 OREGON WIC DATA

## LINN COUNTY HEALTH DEPARTMENT

### ECONOMIC BENEFITS OF WIC

#### 14 LOCAL STORES ACCEPTING WIC:

- 3 Independent store
- 4 Local or regional chains
- 5 National chain stores
- 2 Pharmacies

## \$2,339,324

Total WIC dollars spent  
by participants  
at local stores

#### ALL STORES THAT ACCEPT WIC MUST CARRY:

- At least 8 kinds of fresh fruits and vegetables
- Whole grain products
- Lowfat milk
- Lowfat yogurt
- Canned or dried beans



#### WIC FARM DIRECT NUTRITION PROGRAM

The Farm Direct Nutrition Program (FDNP) provides families with an additional source of nutritious food and education on selecting and preparing fresh produce.

## 31 PARTICIPATING FARMERS

at local farmers markets  
and farm stands

## \$30,432

FDNP dollars paid  
to local farmers

#### WIC CLINIC SITES

Albany, Lebanon, Sweet Home

---

*For more details about these numbers, please visit:*

<https://www.oregon.gov/OHA/PH/HEALTHYPEOPLEFAMILIES/WIC/Pages/annual.aspx>

**541-967-3888**

<https://www.linncountyhealth.org/ph/page/wic-nutrition-program>

---

You can get this document in a different format free of charge. Call 971-673-0040 (voice) or 1-800-735-2900 (TTY) to arrange for the format that will work best for you.

Revised 3/19/2025

# 2024 OREGON WIC DATA

## MALHEUR COUNTY HEALTH DEPARTMENT

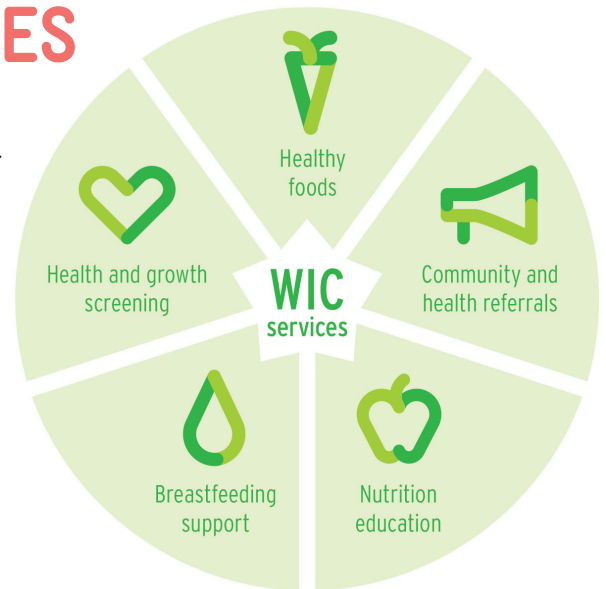
### GROWING HEALTHY FUTURES

Participating in WIC supports the long-term health of women, infants, children and families. WIC is proven to support longer pregnancies and positive birth outcomes<sup>1</sup>.

The American Academy of Pediatrics identifies three foundations of healthy child development:

- **Stable, Responsive Relationships**
- **Safe, Supportive Environments**
- **Appropriate Nutrition<sup>2</sup>**

WIC is the premier public health nutrition program and it supports all three of these developmental foundations.



<sup>1</sup> Finger et al, Journal of Maternal and Child Health, 2017

<sup>2</sup> American Academy of Pediatrics, Policy statement, 2012

### WHO WE SERVED



2,053

Women, infants and children participated in WIC

58%

of all pregnant women served by WIC

1,176

WIC families served



69%

are working families

3 OUT OF 4

participants are infants and children under five



### BREASTFEEDING

99%

of WIC moms start out breastfeeding

24%

of WIC moms breastfeed exclusively for six months

# 2024 OREGON WIC DATA

## MALHEUR COUNTY HEALTH DEPARTMENT

### ECONOMIC BENEFITS OF WIC

#### 7 LOCAL STORES ACCEPTING WIC:

- 2 Independent store
- 2 Local or regional chains
- 2 National chain stores
- 1 Pharmacies

## \$1,146,013

Total WIC dollars spent  
by participants  
at local stores

#### ALL STORES THAT ACCEPT WIC MUST CARRY:

- At least 8 kinds of fresh fruits and vegetables
- Whole grain products
- Lowfat milk
- Lowfat yogurt
- Canned or dried beans



#### WIC FARM DIRECT NUTRITION PROGRAM

The Farm Direct Nutrition Program (FDNP) provides families with an additional source of nutritious food and education on selecting and preparing fresh produce.

## 11 PARTICIPATING FARMERS

at local farmers markets  
and farm stands

## \$12,164

FDNP dollars paid  
to local farmers

#### WIC CLINIC SITES

Ontario

*For more details about these numbers, please visit:*

<https://www.oregon.gov/OHA/PH/HEALTHYPEOPLEFAMILIES/WIC/Pages/annual.aspx>

**541-889-7041**

<http://malheurhealth.org>

You can get this document in a different format free of charge. Call 971-673-0040 (voice) or 1-800-735-2900 (TTY) to arrange for the format that will work best for you.

Revised 3/19/2025



# 2024 OREGON WIC DATA

## MARION COUNTY HEALTH AND HUMAN SERVICES

### GROWING HEALTHY FUTURES

Participating in WIC supports the long-term health of women, infants, children and families. WIC is proven to support longer pregnancies and positive birth outcomes<sup>1</sup>.

The American Academy of Pediatrics identifies three foundations of healthy child development:

- **Stable, Responsive Relationships**
- **Safe, Supportive Environments**
- **Appropriate Nutrition<sup>2</sup>**

WIC is the premier public health nutrition program and it supports all three of these developmental foundations.



<sup>1</sup> Finger et al, Journal of Maternal and Child Health, 2017

<sup>2</sup> American Academy of Pediatrics, Policy statement, 2012

### WHO WE SERVED



7,442

Women, infants and children participated in WIC

42%

of all pregnant women served by WIC

4,069

WIC families served



78%

are working families

3 OUT OF 4

participants are infants and children under five



### BREASTFEEDING

94%

of WIC moms start out breastfeeding

34%

of WIC moms breastfeed exclusively for six months

# 2024 OREGON WIC DATA

## MARION COUNTY HEALTH AND HUMAN SERVICES

### ECONOMIC BENEFITS OF WIC

#### 38 LOCAL STORES ACCEPTING WIC:

- 5 Independent store
- 14 Local or regional chains
- 12 National chain stores
- 7 Pharmacies

## \$4,044,356

Total WIC dollars spent  
by participants  
at local stores

#### ALL STORES THAT ACCEPT WIC MUST CARRY:

- At least 8 kinds of fresh fruits and vegetables
- Whole grain products
- Lowfat milk
- Lowfat yogurt
- Canned or dried beans



#### WIC FARM DIRECT NUTRITION PROGRAM

The Farm Direct Nutrition Program (FDNP) provides families with an additional source of nutritious food and education on selecting and preparing fresh produce.

## 49 PARTICIPATING FARMERS

at local farmers markets  
and farm stands

## \$45,144

FDNP dollars paid  
to local farmers

#### WIC CLINIC SITES

Early College HS, Salem, Santiam, Silverton, Woodburn

*For more details about these numbers, please visit:*

<https://www.oregon.gov/OHA/PH/HEALTHYPEOPLEFAMILIES/WIC/Pages/annual.aspx>

**503-588-5057**

[www.co.marion.or.us/HLT/PH/WIC](http://www.co.marion.or.us/HLT/PH/WIC)

You can get this document in a different format free of charge. Call 971-673-0040 (voice) or 1-800-735-2900 (TTY) to arrange for the format that will work best for you.

*Revised 3/19/2025*

# 2024 OREGON WIC DATA

## MULTNOMAH COUNTY HEALTH DEPARTMENT

### GROWING HEALTHY FUTURES

Participating in WIC supports the long-term health of women, infants, children and families. WIC is proven to support longer pregnancies and positive birth outcomes<sup>1</sup>.

The American Academy of Pediatrics identifies three foundations of healthy child development:

- **Stable, Responsive Relationships**
- **Safe, Supportive Environments**
- **Appropriate Nutrition<sup>2</sup>**

WIC is the premier public health nutrition program and it supports all three of these developmental foundations.



<sup>1</sup> Finger et al, Journal of Maternal and Child Health, 2017

<sup>2</sup> American Academy of Pediatrics, Policy statement, 2012

### WHO WE SERVED



# 19,202

Women, infants and children participated in WIC

# 28%

of all pregnant women served by WIC

# 11,330

WIC families served



# 68%

are working families

# 3 OUT OF 4

participants are infants and children under five



### BREASTFEEDING

# 96%

of WIC moms start out breastfeeding

# 34%

of WIC moms breastfeed exclusively for six months



PUBLIC HEALTH DIVISION

Special Supplemental Nutrition Program for Women, Infants & Children



# 2024 OREGON WIC DATA

## MULTNOMAH COUNTY HEALTH DEPARTMENT

### ECONOMIC BENEFITS OF WIC

#### 84 LOCAL STORES ACCEPTING WIC:

- 18 Independent store
- 30 Local or regional chains
- 22 National chain stores
- 14 Pharmacies

## \$10,370,079

Total WIC dollars spent  
by participants  
at local stores

#### ALL STORES THAT ACCEPT WIC MUST CARRY:

- At least 8 kinds of fresh fruits and vegetables
- Whole grain products
- Lowfat milk
- Lowfat yogurt
- Canned or dried beans



#### WIC FARM DIRECT NUTRITION PROGRAM

The Farm Direct Nutrition Program (FDNP) provides families with an additional source of nutritious food and education on selecting and preparing fresh produce.

## 76 PARTICIPATING FARMERS

at local farmers markets  
and farm stands

## \$169,976

FDNP dollars paid  
to local farmers

#### WIC CLINIC SITES

East County, Gateway, NAYA, North Portland, Northeast

*For more details about these numbers, please visit:*

<https://www.oregon.gov/OHA/PH/HEALTHYPEOPLEFAMILIES/WIC/Pages/annual.aspx>

**503-988-3503**

[multco.us/health/wic](https://multco.us/health/wic)

You can get this document in a different format free of charge. Call 971-673-0040 (voice) or 1-800-735-2900 (TTY) to arrange for the format that will work best for you.

*Revised 3/19/2025*

# 2024 OREGON WIC DATA

## NORTH CENTRAL PUBLIC HEALTH DISTRICT

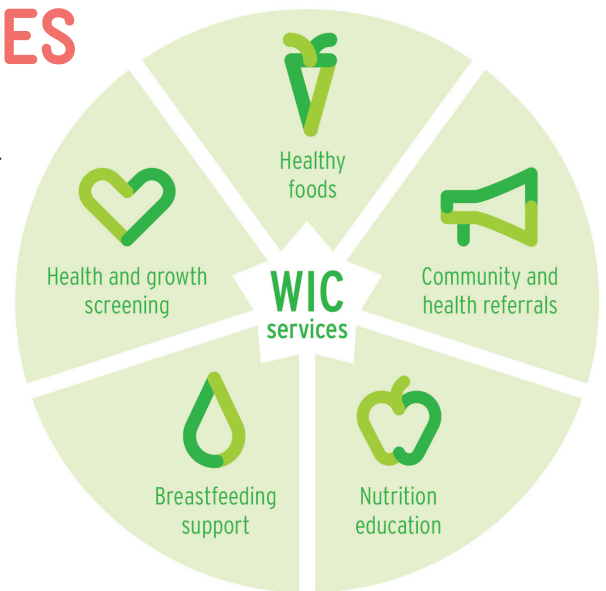
### GROWING HEALTHY FUTURES

Participating in WIC supports the long-term health of women, infants, children and families. WIC is proven to support longer pregnancies and positive birth outcomes<sup>1</sup>.

The American Academy of Pediatrics identifies three foundations of healthy child development:

- **Stable, Responsive Relationships**
- **Safe, Supportive Environments**
- **Appropriate Nutrition<sup>2</sup>**

WIC is the premier public health nutrition program and it supports all three of these developmental foundations.



<sup>1</sup> Finger et al, Journal of Maternal and Child Health, 2017

<sup>2</sup> American Academy of Pediatrics, Policy statement, 2012

### WHO WE SERVED



1,082

Women, infants and children participated in WIC

42%

of all pregnant women served by WIC

641

WIC families served



72%

are working families

3 OUT OF 4

participants are infants and children under five



### BREASTFEEDING

92%

of WIC moms start out breastfeeding

32%

of WIC moms breastfeed exclusively for six months

# 2024 OREGON WIC DATA

## NORTH CENTRAL PUBLIC HEALTH DISTRICT

### ECONOMIC BENEFITS OF WIC

#### 3 LOCAL STORES ACCEPTING WIC:

- 1 Independent store
- 0 Local or regional chains
- 1 National chain stores
- 1 Pharmacies

## \$578,924

Total WIC dollars spent  
by participants  
at local stores

#### ALL STORES THAT ACCEPT WIC MUST CARRY:

- At least 8 kinds of fresh fruits and vegetables
- Whole grain products
- Lowfat milk
- Lowfat yogurt
- Canned or dried beans



#### WIC FARM DIRECT NUTRITION PROGRAM

The Farm Direct Nutrition Program (FDNP) provides families with an additional source of nutritious food and education on selecting and preparing fresh produce.

## 21 PARTICIPATING FARMERS

at local farmers markets  
and farm stands

## \$6,228

FDNP dollars paid  
to local farmers

#### WIC CLINIC SITES

Maupin, Moro, The Dalles

---

*For more details about these numbers, please visit:*

<https://www.oregon.gov/OHA/PH/HEALTHYPEOPLEFAMILIES/WIC/Pages/annual.aspx>

**541-506-2610**

<https://www.ncphd.org/wic>

---

You can get this document in a different format free of charge. Call 971-673-0040 (voice) or 1-800-735-2900 (TTY) to arrange for the format that will work best for you.

Revised 3/19/2025



# 2024 OREGON WIC DATA

## POLK COUNTY HEALTH DEPARTMENT

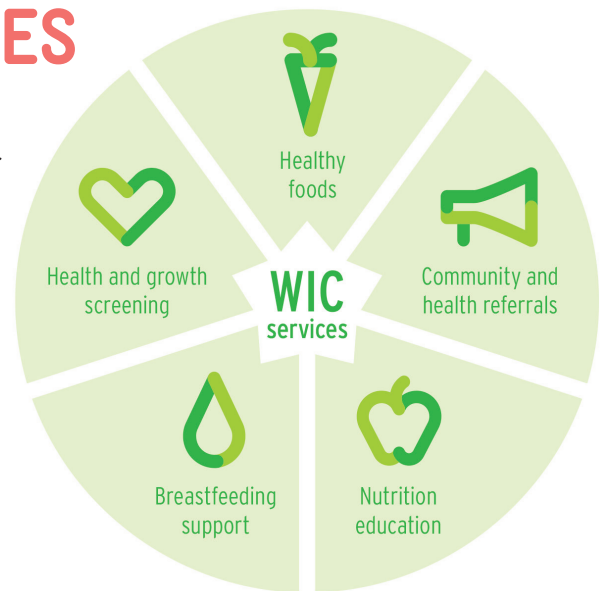
### GROWING HEALTHY FUTURES

Participating in WIC supports the long-term health of women, infants, children and families. WIC is proven to support longer pregnancies and positive birth outcomes<sup>1</sup>.

The American Academy of Pediatrics identifies three foundations of healthy child development:

- **Stable, Responsive Relationships**
- **Safe, Supportive Environments**
- **Appropriate Nutrition<sup>2</sup>**

WIC is the premier public health nutrition program and it supports all three of these developmental foundations.



<sup>1</sup> Finger et al, Journal of Maternal and Child Health, 2017

<sup>2</sup> American Academy of Pediatrics, Policy statement, 2012

### WHO WE SERVED



# 1,379

Women, infants and children participated in WIC

# 28%

of all pregnant women served by WIC

# 785

WIC families served



# 84%

are working families

# 3 OUT OF 4

participants are infants and children under five



### BREASTFEEDING

# 94%

of WIC moms start out breastfeeding

# 36%

of WIC moms breastfeed exclusively for six months



PUBLIC HEALTH DIVISION

Special Supplemental Nutrition Program for Women, Infants & Children

# 2024 OREGON WIC DATA

## POLK COUNTY HEALTH DEPARTMENT

### ECONOMIC BENEFITS OF WIC

#### 7 LOCAL STORES ACCEPTING WIC:

- 2 Independent store
- 2 Local or regional chains
- 2 National chain stores
- 1 Pharmacies

## \$711,620

Total WIC dollars spent  
by participants  
at local stores

#### ALL STORES THAT ACCEPT WIC MUST CARRY:

- At least 8 kinds of fresh fruits and vegetables
- Whole grain products
- Lowfat milk
- Lowfat yogurt
- Canned or dried beans



#### WIC FARM DIRECT NUTRITION PROGRAM

The Farm Direct Nutrition Program (FDNP) provides families with an additional source of nutritious food and education on selecting and preparing fresh produce.

## 22 PARTICIPATING FARMERS

at local farmers markets  
and farm stands

## \$7,532

FDNP dollars paid  
to local farmers

#### WIC CLINIC SITES

Dallas, Falls City, Monmouth/Independence

---

*For more details about these numbers, please visit:*

<https://www.oregon.gov/OHA/PH/HEALTHYPEOPLEFAMILIES/WIC/Pages/annual.aspx>

**503-623-8175**

[www.co.polk.or.us/ph/wic-women-infants-children](http://www.co.polk.or.us/ph/wic-women-infants-children)

---

You can get this document in a different format free of charge. Call 971-673-0040 (voice) or 1-800-735-2900 (TTY) to arrange for the format that will work best for you.

Revised 3/19/2025

# 2024 OREGON WIC DATA

## TILLAMOOK COUNTY PUBLIC HEALTH

### GROWING HEALTHY FUTURES

Participating in WIC supports the long-term health of women, infants, children and families. WIC is proven to support longer pregnancies and positive birth outcomes<sup>1</sup>.

The American Academy of Pediatrics identifies three foundations of healthy child development:

- **Stable, Responsive Relationships**
- **Safe, Supportive Environments**
- **Appropriate Nutrition<sup>2</sup>**

WIC is the premier public health nutrition program and it supports all three of these developmental foundations.



<sup>1</sup> Finger et al, Journal of Maternal and Child Health, 2017

<sup>2</sup> American Academy of Pediatrics, Policy statement, 2012

### WHO WE SERVED



# 802

Women, infants and children participated in WIC

# 30%

of all pregnant women served by WIC

# 468

WIC families served



# 67%

are working families

# 3 OUT OF 4

participants are infants and children under five



### BREASTFEEDING

# 100%

of WIC moms start out breastfeeding

# 30%

of WIC moms breastfeed exclusively for six months



PUBLIC HEALTH DIVISION

Special Supplemental Nutrition Program for Women, Infants & Children



# 2024 OREGON WIC DATA

## TILLAMOOK COUNTY PUBLIC HEALTH

### ECONOMIC BENEFITS OF WIC

#### 5 LOCAL STORES ACCEPTING WIC:

- 3 Independent store
- 0 Local or regional chains
- 1 National chain stores
- 1 Pharmacies

## \$453,887

Total WIC dollars spent  
by participants  
at local stores

#### ALL STORES THAT ACCEPT WIC MUST CARRY:

- At least 8 kinds of fresh fruits and vegetables
- Whole grain products
- Lowfat milk
- Lowfat yogurt
- Canned or dried beans



#### WIC FARM DIRECT NUTRITION PROGRAM

The Farm Direct Nutrition Program (FDNP) provides families with an additional source of nutritious food and education on selecting and preparing fresh produce.

## 8 PARTICIPATING FARMERS

at local farmers markets  
and farm stands

## \$5,472

FDNP dollars paid  
to local farmers

#### WIC CLINIC SITES

North County (Rockaway Beach), Tillamook

---

*For more details about these numbers, please visit:*

<https://www.oregon.gov/OHA/PH/HEALTHYPEOPLEFAMILIES/WIC/Pages/annual.aspx>

**503-842-3900**

<https://tillamookchc.org/public-health/nutrition-for-women-infants-children-wic/>

---

You can get this document in a different format free of charge. Call 971-673-0040 (voice) or 1-800-735-2900 (TTY) to arrange for the format that will work best for you.

Revised 3/19/2025

# 2024 OREGON WIC DATA

## CENTER FOR HUMAN DEVELOPMENT (UNION)

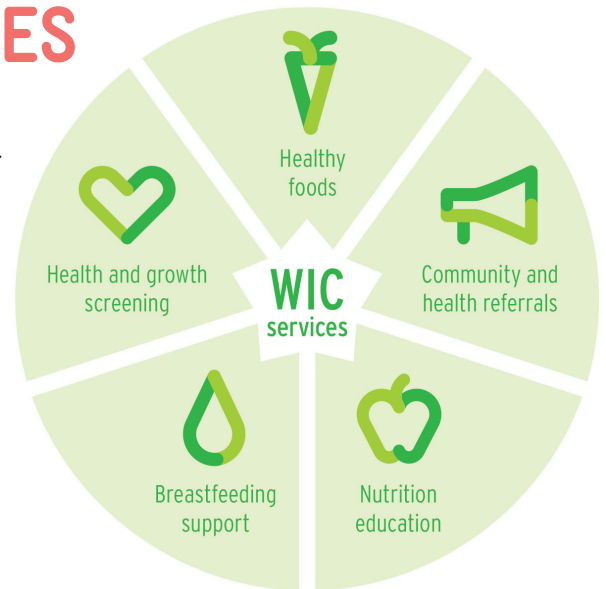
### GROWING HEALTHY FUTURES

Participating in WIC supports the long-term health of women, infants, children and families. WIC is proven to support longer pregnancies and positive birth outcomes<sup>1</sup>.

The American Academy of Pediatrics identifies three foundations of healthy child development:

- **Stable, Responsive Relationships**
- **Safe, Supportive Environments**
- **Appropriate Nutrition<sup>2</sup>**

WIC is the premier public health nutrition program and it supports all three of these developmental foundations.



<sup>1</sup> Finger et al, Journal of Maternal and Child Health, 2017

<sup>2</sup> American Academy of Pediatrics, Policy statement, 2012

### WHO WE SERVED



# 962

Women, infants and children participated in WIC

# 35%

of all pregnant women served by WIC

# 532

WIC families served



# 81%

are working families

# 3 OUT OF 4

participants are infants and children under five



### BREASTFEEDING

# 99%

of WIC moms start out breastfeeding

# 27%

of WIC moms breastfeed exclusively for six months

# 2024 OREGON WIC DATA

## CENTER FOR HUMAN DEVELOPMENT (UNION)

### ECONOMIC BENEFITS OF WIC

#### 5 LOCAL STORES ACCEPTING WIC:

- 3 Independent store
- 0 Local or regional chains
- 1 National chain stores
- 1 Pharmacies

## \$473,008

Total WIC dollars spent  
by participants  
at local stores

#### ALL STORES THAT ACCEPT WIC MUST CARRY:

- At least 8 kinds of fresh fruits and vegetables
- Whole grain products
- Lowfat milk
- Lowfat yogurt
- Canned or dried beans



#### WIC FARM DIRECT NUTRITION PROGRAM

The Farm Direct Nutrition Program (FDNP) provides families with an additional source of nutritious food and education on selecting and preparing fresh produce.

## 10 PARTICIPATING FARMERS

at local farmers markets  
and farm stands

## \$5,568

FDNP dollars paid  
to local farmers

#### WIC CLINIC SITES

La Grande

*For more details about these numbers, please visit:*

<https://www.oregon.gov/OHA/PH/HEALTHYPEOPLEFAMILIES/WIC/Pages/annual.aspx>

**541-962-8829**

<https://www.chdinc.org/wic>

You can get this document in a different format free of charge. Call 971-673-0040 (voice) or 1-800-735-2900 (TTY) to arrange for the format that will work best for you.

Revised 3/19/2025



# 2024 OREGON WIC DATA

## WASHINGTON COUNTY PUBLIC HEALTH

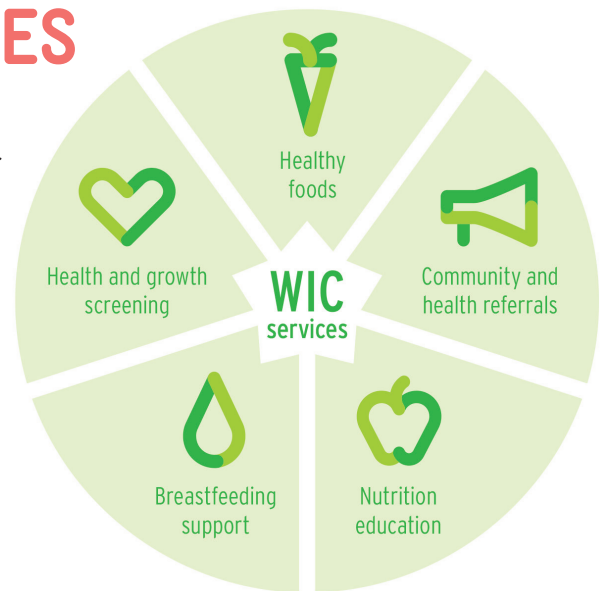
### GROWING HEALTHY FUTURES

Participating in WIC supports the long-term health of women, infants, children and families. WIC is proven to support longer pregnancies and positive birth outcomes<sup>1</sup>.

The American Academy of Pediatrics identifies three foundations of healthy child development:

- **Stable, Responsive Relationships**
- **Safe, Supportive Environments**
- **Appropriate Nutrition<sup>2</sup>**

WIC is the premier public health nutrition program and it supports all three of these developmental foundations.



<sup>1</sup> Finger et al, Journal of Maternal and Child Health, 2017

<sup>2</sup> American Academy of Pediatrics, Policy statement, 2012

### WHO WE SERVED



# 13,726

Women, infants and children participated in WIC

# 24%

of all pregnant women served by WIC

# 8,048

WIC families served



# 73%

are working families

# 3 OUT OF 4

participants are infants and children under five



### BREASTFEEDING

# 96%

of WIC moms start out breastfeeding

# 36%

of WIC moms breastfeed exclusively for six months

# 2024 OREGON WIC DATA

## WASHINGTON COUNTY PUBLIC HEALTH

### ECONOMIC BENEFITS OF WIC

#### 61 LOCAL STORES ACCEPTING WIC:

- 8 Independent store
- 21 Local or regional chains
- 23 National chain stores
- 9 Pharmacies

## \$7,243,688

Total WIC dollars spent  
by participants  
at local stores

#### ALL STORES THAT ACCEPT WIC MUST CARRY:

- At least 8 kinds of fresh fruits and vegetables
- Whole grain products
- Lowfat milk
- Lowfat yogurt
- Canned or dried beans



#### WIC FARM DIRECT NUTRITION PROGRAM

The Farm Direct Nutrition Program (FDNP) provides families with an additional source of nutritious food and education on selecting and preparing fresh produce.

## 69 PARTICIPATING FARMERS

at local farmers markets  
and farm stands

## \$93,284

FDNP dollars paid  
to local farmers

#### WIC CLINIC SITES

Beaverton, Hillsboro, Tigard

---

*For more details about these numbers, please visit:*

<https://www.oregon.gov/OHA/PH/HEALTHYPEOPLEFAMILIES/WIC/Pages/annual.aspx>

**503-846-3555**

[www.co.washington.or.us/HHS/PublicHealth/WIC/index.cfm](http://www.co.washington.or.us/HHS/PublicHealth/WIC/index.cfm)

---

You can get this document in a different format free of charge. Call 971-673-0040 (voice) or 1-800-735-2900 (TTY) to arrange for the format that will work best for you.

Revised 3/19/2025

# 2024 OREGON WIC DATA

## SALUD WIC PROGRAM

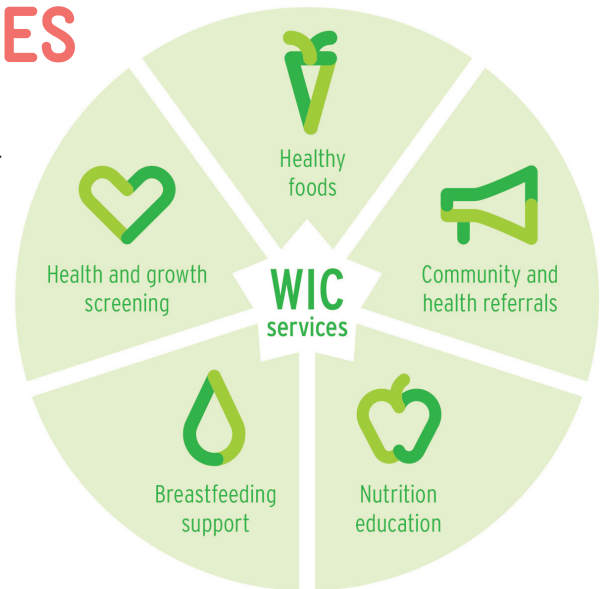
### GROWING HEALTHY FUTURES

Participating in WIC supports the long-term health of women, infants, children and families. WIC is proven to support longer pregnancies and positive birth outcomes<sup>1</sup>.

The American Academy of Pediatrics identifies three foundations of healthy child development:

- **Stable, Responsive Relationships**
- **Safe, Supportive Environments**
- **Appropriate Nutrition<sup>2</sup>**

WIC is the premier public health nutrition program and it supports all three of these developmental foundations.



<sup>1</sup> Finger et al, Journal of Maternal and Child Health, 2017

<sup>2</sup> American Academy of Pediatrics, Policy statement, 2012

### WHO WE SERVED



# 12,693

Women, infants and children participated in WIC

# 38%

of all pregnant women served by WIC

# 7,372

WIC families served



# 88%

are working families

# 3 OUT OF 4

participants are infants and children under five



### BREASTFEEDING

# 96%

of WIC moms start out breastfeeding

# 32%

of WIC moms breastfeed exclusively for six months



# 2024 OREGON WIC DATA

## SALUD WIC PROGRAM

### ECONOMIC BENEFITS OF WIC

#### 14 LOCAL STORES ACCEPTING WIC:

- 5 Independent store
- 3 Local or regional chains
- 3 National chain stores
- 3 Pharmacies

## \$7,176,044

Total WIC dollars spent  
by participants  
at local stores

#### ALL STORES THAT ACCEPT WIC MUST CARRY:

- At least 8 kinds of fresh fruits and vegetables
- Whole grain products
- Lowfat milk
- Lowfat yogurt
- Canned or dried beans



#### WIC FARM DIRECT NUTRITION PROGRAM

The Farm Direct Nutrition Program (FDNP) provides families with an additional source of nutritious food and education on selecting and preparing fresh produce.

## 72 PARTICIPATING FARMERS

at local farmers markets  
and farm stands

## \$91,556

FDNP dollars paid  
to local farmers

#### WIC CLINIC SITES

Beverly, Lancaster, McMinnville, Newberg, Pacific Pediatrics, Rosewood, Woodburn, Yamhill County Mobile Clinic

*For more details about these numbers, please visit:*

<https://www.oregon.gov/OHA/PH/HEALTHYPEOPLEFAMILIES/WIC/Pages/annual.aspx>

**1-855-942-9420**

[www.saludwic.org/](http://www.saludwic.org/)

You can get this document in a different format free of charge. Call 971-673-0040 (voice) or 1-800-735-2900 (TTY) to arrange for the format that will work best for you.

Revised 3/19/2025

# 2024 OREGON WIC DATA

## THE CONFEDERATED TRIBES OF WARM SPRINGS

### GROWING HEALTHY FUTURES

Participating in WIC supports the long-term health of women, infants, children and families. WIC is proven to support longer pregnancies and positive birth outcomes<sup>1</sup>.

The American Academy of Pediatrics identifies three foundations of healthy child development:

- **Stable, Responsive Relationships**
- **Safe, Supportive Environments**
- **Appropriate Nutrition<sup>2</sup>**

WIC is the premier public health nutrition program and it supports all three of these developmental foundations.



<sup>1</sup> Finger et al, Journal of Maternal and Child Health, 2017

<sup>2</sup> American Academy of Pediatrics, Policy statement, 2012

### WHO WE SERVED



# 341

Women, infants and children participated in WIC

# 74%

of all pregnant women served by WIC

# 199

WIC families served



# 25%

are working families

# 3 OUT OF 4

participants are infants and children under five



### BREASTFEEDING

# 94%

of WIC moms start out breastfeeding

# 47%

of WIC moms breastfeed exclusively for six months

# 2024 OREGON WIC DATA

## THE CONFEDERATED TRIBES OF WARM SPRINGS

### ECONOMIC BENEFITS OF WIC

#### 4 LOCAL STORES ACCEPTING WIC:

- 2 Independent store
- 1 Local or regional chains
- 1 National chain stores
- 0 Pharmacies

## \$158,270

Total WIC dollars spent  
by participants  
at local stores

#### ALL STORES THAT ACCEPT WIC MUST CARRY:

- At least 8 kinds of fresh fruits and vegetables
- Whole grain products
- Lowfat milk
- Lowfat yogurt
- Canned or dried beans



#### WIC FARM DIRECT NUTRITION PROGRAM

The Farm Direct Nutrition Program (FDNP) provides families with an additional source of nutritious food and education on selecting and preparing fresh produce.

## 6 PARTICIPATING FARMERS

at local farmers markets  
and farm stands

## \$996

FDNP dollars paid  
to local farmers

#### WIC CLINIC SITES

Warm Springs Health and Wellness Center

---

*For more details about these numbers, please visit:*

<https://www.oregon.gov/OHA/PH/HEALTHYPEOPLEFAMILIES/WIC/Pages/annual.aspx>

**541-553-2460**

<https://warmsprings-nsn.gov/>

---

You can get this document in a different format free of charge. Call 971-673-0040 (voice) or 1-800-735-2900 (TTY) to arrange for the format that will work best for you.

Revised 3/19/2025



# 2024 OREGON WIC DATA

## THE CONFEDERATED TRIBES OF UMATILLA

### GROWING HEALTHY FUTURES

Participating in WIC supports the long-term health of women, infants, children and families. WIC is proven to support longer pregnancies and positive birth outcomes<sup>1</sup>.

The American Academy of Pediatrics identifies three foundations of healthy child development:

- **Stable, Responsive Relationships**
- **Safe, Supportive Environments**
- **Appropriate Nutrition<sup>2</sup>**

WIC is the premier public health nutrition program and it supports all three of these developmental foundations.



<sup>1</sup> Finger et al, Journal of Maternal and Child Health, 2017

<sup>2</sup> American Academy of Pediatrics, Policy statement, 2012

### WHO WE SERVED



# 122

Women, infants and children participated in WIC

# 44%

of all pregnant women served by WIC

# 77

WIC families served



# 18%

are working families

# 3 OUT OF 4

participants are infants and children under five



### BREASTFEEDING

# 100%

of WIC moms start out breastfeeding

# 48%

of WIC moms breastfeed exclusively for six months

# 2024 OREGON WIC DATA

## THE CONFEDERATED TRIBES OF UMATILLA

### ECONOMIC BENEFITS OF WIC

#### 9 LOCAL STORES ACCEPTING WIC:

- 4 Independent store
- 0 Local or regional chains
- 3 National chain stores
- 2 Pharmacies

## \$47,267

Total WIC dollars spent  
by participants  
at local stores

#### ALL STORES THAT ACCEPT WIC MUST CARRY:

- At least 8 kinds of fresh fruits and vegetables
- Whole grain products
- Lowfat milk
- Lowfat yogurt
- Canned or dried beans



#### WIC FARM DIRECT NUTRITION PROGRAM

The Farm Direct Nutrition Program (FDNP) provides families with an additional source of nutritious food and education on selecting and preparing fresh produce.

## 16 PARTICIPATING FARMERS

at local farmers markets  
and farm stands

## \$540

FDNP dollars paid  
to local farmers

#### WIC CLINIC SITES

Yellowhawk Tribal Health Center

---

*For more details about these numbers, please visit:*

<https://www.oregon.gov/OHA/PH/HEALTHYPEOPLEFAMILIES/WIC/Pages/annual.aspx>

**541-240-8521**

<https://www.ctuir.org/departments/yellowhawk/>

---

You can get this document in a different format free of charge. Call 971-673-0040 (voice) or 1-800-735-2900 (TTY) to arrange for the format that will work best for you.

Revised 3/19/2025

# 2024 OREGON WIC DATA

## UMATILLA-MORROW HEAD START

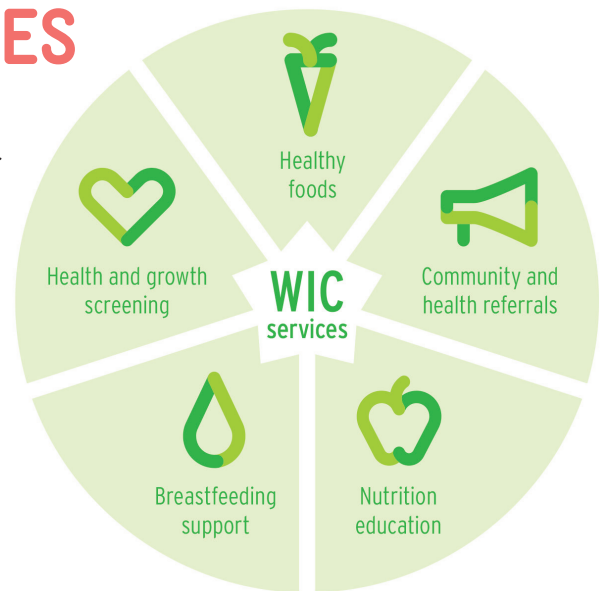
### GROWING HEALTHY FUTURES

Participating in WIC supports the long-term health of women, infants, children and families. WIC is proven to support longer pregnancies and positive birth outcomes<sup>1</sup>.

The American Academy of Pediatrics identifies three foundations of healthy child development:

- **Stable, Responsive Relationships**
- **Safe, Supportive Environments**
- **Appropriate Nutrition<sup>2</sup>**

WIC is the premier public health nutrition program and it supports all three of these developmental foundations.



<sup>1</sup> Finger et al, Journal of Maternal and Child Health, 2017

<sup>2</sup> American Academy of Pediatrics, Policy statement, 2012

### WHO WE SERVED



4,624

Women, infants and children participated in WIC

49%

of all pregnant women served by WIC

2,682

WIC families served



75%

are working families

3 OUT OF 4

participants are infants and children under five



### BREASTFEEDING

93%

of WIC moms start out breastfeeding

21%

of WIC moms breastfeed exclusively for six months



# 2024 OREGON WIC DATA

## UMATILLA-MORROW HEAD START

### ECONOMIC BENEFITS OF WIC

#### 12 LOCAL STORES ACCEPTING WIC:

- 6 Independent store
- 1 Local or regional chains
- 3 National chain stores
- 2 Pharmacies

## \$2,630,289

Total WIC dollars spent  
by participants  
at local stores

#### ALL STORES THAT ACCEPT WIC MUST CARRY:

- At least 8 kinds of fresh fruits and vegetables
- Whole grain products
- Lowfat milk
- Lowfat yogurt
- Canned or dried beans



#### WIC FARM DIRECT NUTRITION PROGRAM

The Farm Direct Nutrition Program (FDNP) provides families with an additional source of nutritious food and education on selecting and preparing fresh produce.

## 19 PARTICIPATING FARMERS

at local farmers markets  
and farm stands

## \$23,416

FDNP dollars paid  
to local farmers

#### WIC CLINIC SITES

Boardman, Fossil, Heppner, Hermiston, Irrigon, La Grande, Milton-Freewater, Pendleton, Umatilla

*For more details about these numbers, please visit:*

<https://www.oregon.gov/OHA/PH/HEALTHYPEOPLEFAMILIES/WIC/Pages/annual.aspx>

**1-800-559-5878**

<https://umchs.com/programs/wic/>

You can get this document in a different format free of charge. Call 971-673-0040 (voice) or 1-800-735-2900 (TTY) to arrange for the format that will work best for you.

Revised 3/19/2025

# 2024 OREGON WIC DATA

## WINDING WATERS MEDICAL CLINIC

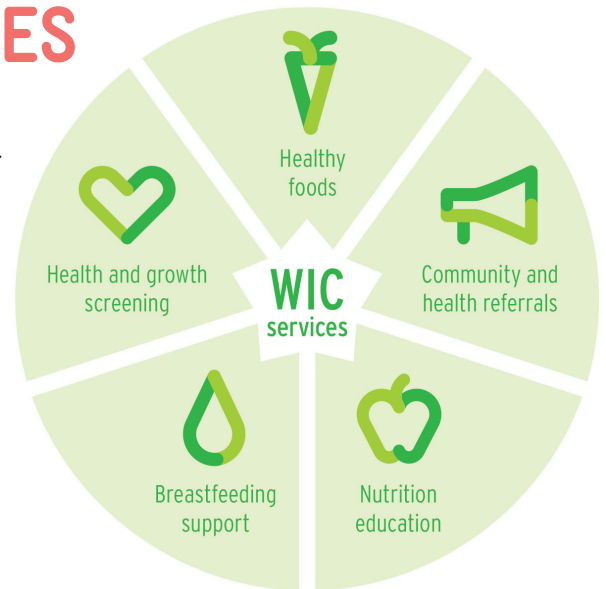
### GROWING HEALTHY FUTURES

Participating in WIC supports the long-term health of women, infants, children and families. WIC is proven to support longer pregnancies and positive birth outcomes<sup>1</sup>.

The American Academy of Pediatrics identifies three foundations of healthy child development:

- **Stable, Responsive Relationships**
- **Safe, Supportive Environments**
- **Appropriate Nutrition<sup>2</sup>**

WIC is the premier public health nutrition program and it supports all three of these developmental foundations.



<sup>1</sup> Finger et al, Journal of Maternal and Child Health, 2017

<sup>2</sup> American Academy of Pediatrics, Policy statement, 2012

### WHO WE SERVED



# 131

Women, infants and children participated in WIC

# 23%

of all pregnant women served by WIC

# 81

WIC families served



# 33%

are working families

# 3 OUT OF 4

participants are infants and children under five



### BREASTFEEDING

# 100%

of WIC moms start out breastfeeding

# 27%

of WIC moms breastfeed exclusively for six months

# 2024 OREGON WIC DATA

## WINDING WATERS MEDICAL CLINIC

### ECONOMIC BENEFITS OF WIC

#### 4 LOCAL STORES ACCEPTING WIC:

- 3 Independent store
- 0 Local or regional chains
- 1 National chain stores
- 0 Pharmacies

## \$46,099

Total WIC dollars spent  
by participants  
at local stores

#### ALL STORES THAT ACCEPT WIC MUST CARRY:

- At least 8 kinds of fresh fruits and vegetables
- Whole grain products
- Lowfat milk
- Lowfat yogurt
- Canned or dried beans



#### WIC FARM DIRECT NUTRITION PROGRAM

The Farm Direct Nutrition Program (FDNP) provides families with an additional source of nutritious food and education on selecting and preparing fresh produce.

## 16 PARTICIPATING FARMERS

at local farmers markets  
and farm stands

## \$620

FDNP dollars paid  
to local farmers

#### WIC CLINIC SITES

Winding Waters Medical Clinic

---

*For more details about these numbers, please visit:*

<https://www.oregon.gov/OHA/PH/HEALTHYPEOPLEFAMILIES/WIC/Pages/annual.aspx>

**541-426-4502**

<https://windingwaters.org/wic-services/>

---

You can get this document in a different format free of charge. Call 971-673-0040 (voice) or 1-800-735-2900 (TTY) to arrange for the format that will work best for you.

Revised 3/19/2025