



ScreenWise
Spring 2017 Newsletter



Program Updates and Reminders

Happy Spring from ScreenWise!

After a long winter, we're all excited about the changes that spring will bring. ScreenWise patient enrollments continue to rise and staff have been busy with Phase 1 of the pilot program, featuring integrated breast and cervical cancer screening, genetics and cardiovascular services, forms based payments, and a range of improved materials. As we move ahead, our goals include increasing linkages to services, driven by our commitment to improving health equity for priority populations. ScreenWise will continue to embrace flexibility and innovation, with a shared belief that all individuals should have the opportunity to attain the highest level of health regardless of race, income, ethnicity, sexual orientation or geographic location.

On behalf of the ScreenWise team, I want to thank you for your continued commitment to our program and to the health of our shared patients. You are greatly appreciated.

Kristin Kane

ScreenWise Program Manager

Access to Services for All Oregonians



ScreenWise supports [Governor Brown](#) and the [Oregon Health Authority's](#) mission to advance the health of all Oregonians, regardless of immigration or refugee status, national origin or religion. Health is the foundation for thriving people, families and communities. When people cannot obtain health care due to lack of coverage, lack of adequate services or fears about immigration enforcement, our communities face greater risk –risks that can come from exposure to untreated disease, the burdens of unaddressed illness or added costs of delayed care.

ScreenWise appreciates the ongoing dedication and support of our providers and partners to ensure that all eligible Oregonians have access to our program services.

Resources:

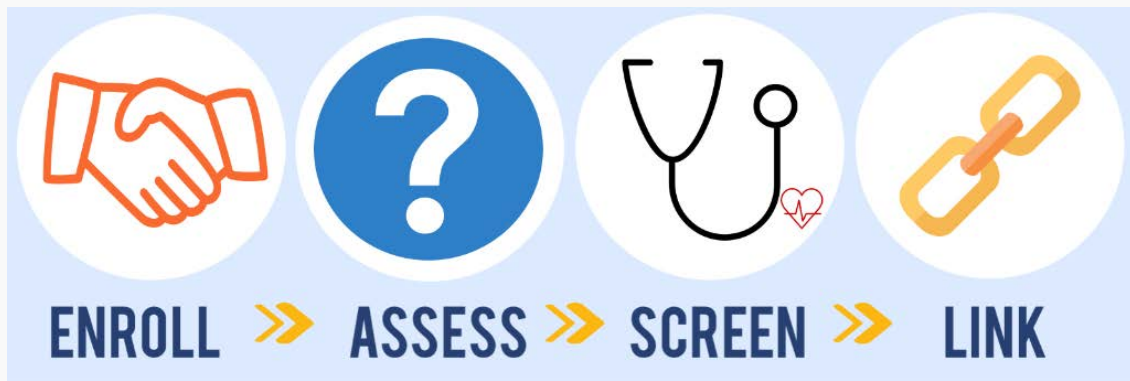
Governor Kate Brown's Executive Order 17-04, renewing Oregon's commitment to protecting its immigrant, refugee, and religious-minority residents is located here:

https://www.oregon.gov/gov/Documents/executive_orders/eo_17-04.pdf

Oregon Health Authority updated statement on access to health services for Oregon residents is located here:

<http://www.oregon.gov/oha/healthplan/Documents/OHA%20statement%20-%20Access%20to%20health%20services%20for%20Oregon%20residents.pdf>

Pilot Project Update



In January, **Songbird Healing Arts Center**, **La Clinica Del Valle - Medford**, and **Jackson County Public Health Clinic** enthusiastically launched the ScreenWise Pilot Project (the future ScreenWise model). These clinics embraced the opportunity to provide input on forms, processes, payment model, and reports. We are grateful for their positive attitudes, patience, and partnership.

ScreenWise also wants to thank **Alida Raynor** from Mid-Columbia Medical Center for her thoughtful and constructive feedback on forms and reports. We appreciate her time and attention to details.

Phase 2 of the pilot project will roll out in May 2017. We expect to add 5-10 clinics. Phase 2 will allow us to make adjustments before rolling out statewide this summer.

If you are interested in signing up to participate in phase 2, please contact kristin.a.kane@state.or.us.

Submitting Data & Claims

If you are in need of a secure portal to email patient information, we encourage you to submit your data and claims documents [via secure email](#) to ScreenWise.Info@state.or.us. Please note: If you do not use the state secure email portal, your clinic is responsible for ensuring that you are following HIPAA guidelines. In addition, please do not include your patient's name in the subject line.

You may also submit via fax (971-673-0997) or mail to 800 NE Oregon St., Suite 370, Portland, OR 97232

Staff News - Farewell Gretchen Caplener

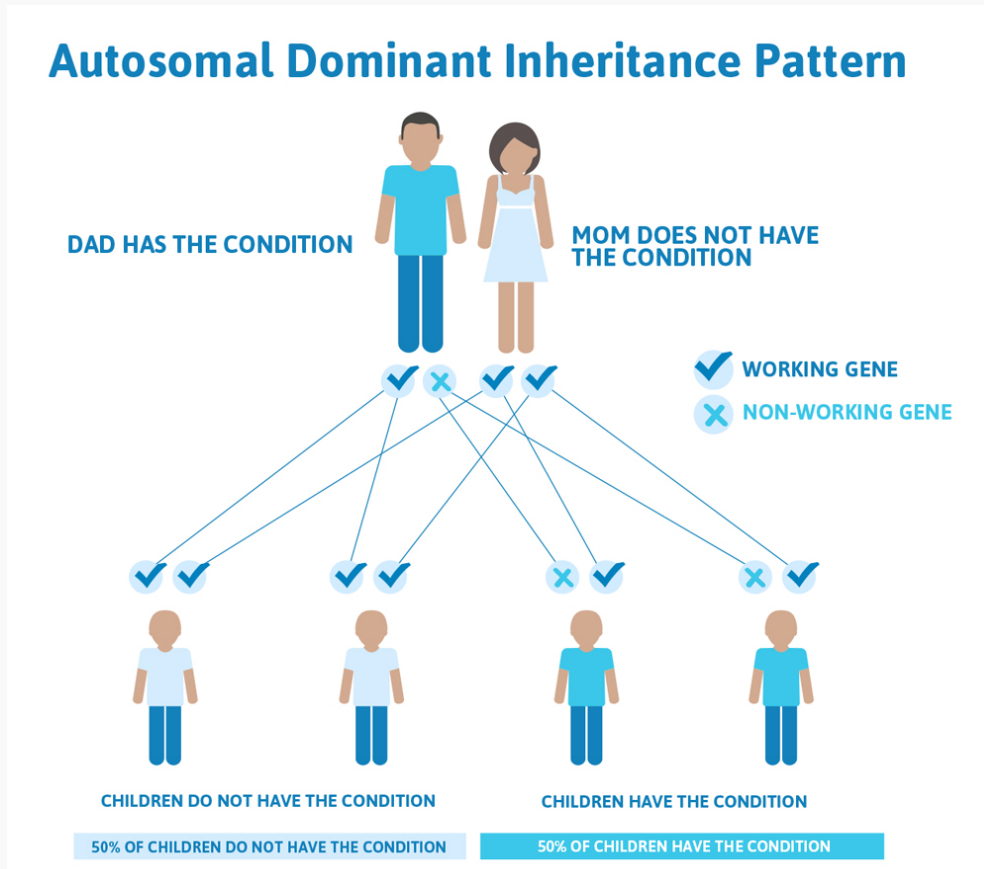
In mid-February, the ScreenWise team said a sad farewell to our Quality Assurance Coordinator, Gretchen Caplener. Please join us in wishing Gretchen all the best as she moves on to her next exciting adventure as a full-time mom to her beautiful son.

The Quality Assurance Coordinator position has been posted and the program is working to fill it again by May 2017. We look forward to introducing you to our future team member!

Genetics Update - Dads Matter too

Studies have found that many doctors forget to include the father's side of the family when considering autosomal dominant syndromes, such breast and ovarian cancer syndrome

(HBOC). Even when Dad is unlikely to get or can't get a specific type of cancer, like breast or ovarian cancer, he has a 50% chance of passing the risk on to his kids. For HBOC, if a patient has breast, ovarian, prostate, or pancreatic cancers on either side of the family, referral for genetic counseling should be considered. Dads matter too!



In an **autosomal dominant** disease, if you inherit the abnormal gene from only one parent, you can get the disease. Often, one of the parents may also have the disease.

Diseases with Autosomal Dominant Inheritance include:

- Hereditary Breast and Ovarian Cancer Syndrome (HBOC)
- Familial Hypercholesterolemia
- Huntington's Disease
- Lynch Syndrome
- Marfan Syndrome

- Neurofibromatosis type 1

Does your clinic use family health history to assess a patient's risk of developing cancer?

For further information or genetics questions, please contact the ScreenWise Genetics Coordinator, Summer Cox at summer.l.cox@state.or.us.

Item of Interest

Determinants of Health Fact Sheets

The SelfMade Health Network has developed a *Determinants of Health Series* that includes a variety of [fact sheets](#) on various health disparities and their impacts on health.



The Familias en Acción Latino Health Equity Conference, [Culturally Appropriate Aging Care for Latinos](#), will be held on June 20, 2017 in Portland, Oregon. The conference provides a forum to focus on individual and community issues addressing health equity through research, programs, and policies.

Professional Development Opportunities

Under its new model, ScreenWise has integrated breast and cervical cancer screening, genetics services, heart health screening, and linkages to healthy behavior support options. To support our providers during this transitional period, ScreenWise encourages you to consider the following professional development opportunities and events.



- [April 25: ACPM Webinar for WISEWOMAN](#) - The American College of Preventive Medicine (ACPM), in collaboration with the Division for Heart Disease and Stroke Prevention's WISEWOMAN Program, is hosting a webinar for WISEWOMAN providers/clinicians, focusing on collaborations, methods and tools based on lifestyle medicine practices to improve health outcomes.

- [April 26: Basics of Cancer & Genetics](#) - ScreenWise and the American Cancer Society are excited to present a webinar featuring Mary E. Freivogel, MS, CGC, of Invision Sally Jobe, and the 2017 President of National Society of Genetic Counseling.

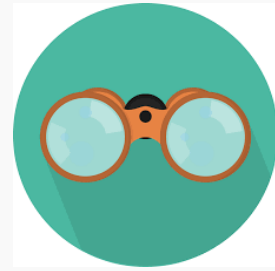
- [Cancer Risk Assessment, Testing & Management](#)

- [Cardiovascular Risk in Patients with Primary Hyperlipidemia and Familial Hypercholesterolemia](#)

- [Genetics: Hereditary Breast Cancer](#)

Stay Informed

Along with ScreenWise, the Oregon Health Authority houses other programs such as the Oregon Health Plan, WIC, and Oregon Contraceptive Care. Find out more and stay up to date with news and changes as they happen with Facebook, Twitter and our free eSubscribe email alert service.



Find OHA on [Facebook](#):



Get OHA [e-mail alerts](#)



Follow OHA on [Twitter](#)

Copyright © 2017 ScreenWise, All rights reserved.

Our mailing address is:

OHA
ScreenWise
800 NE Oregon St. Suite 370
Portland, OR 97232



Want to change how you receive these emails?
You can [update your preferences](#) or [unsubscribe from this list](#)