



ScreenWise
Fall 2017 Newsletter



Happy Fall from ScreenWise!

We hope you are enjoying the long overdue transition to fall. Here at ScreenWise, exciting program improvements continue to move along. As we have highlighted in past newsletters and correspondence, ScreenWise has been working Pilot Project providers to test new

forms, processes, and billing procedures since December 2016. Pilot project phase 2 has wrapped up and we are offering training webinars September 22 – October 6 to review the new forms and processes and the new model will begin October 2, 2017. Links to the webinars have been emailed to all program contacts.

Around the time we were wrapping up our Pilot Project phase 2 and getting ready to roll out, we got word that we would be receiving less money than we were anticipating from the Centers for Disease Control and Prevention (CDC). We also learned of CDC's priorities and must work to ensure alignment with their emphasis on screening women who are over the age of 50 for breast cancer and screening rarely or never screened women for cervical cancer. In addition, the program also learned that ScreenWise will receive less funding this year from the state's General Fund as funding levels were determined using prior year service data. As a result of this new information, the program is quickly working to determine how to absorb the decrease in funding. Although the timing of the decreased funding is less than ideal, we expect that the new program model will improve our provider experience with the program while also making it easier to monitor billing and claims information. ScreenWise staff are looking at alternative cost savings measure and will communicate ideas and decisions as quickly as possible with our provider network.

Despite these changes, ScreenWise remains committed to building upon our work to integrate breast and cervical cancer screening, genetics and cardiovascular services, while improving the provider experience of working with our program. This fall and winter, we will also be updating our Oregon Administrative Rules (OARs) and Program Manual, to ensure these documents align with the program changes. As a valued stakeholder, you will be given the opportunity to review and provide input on these documents.

On behalf of the ScreenWise team, thanks for all that you do to support ScreenWise in improving health equity for medically underserved Oregonians across the state.

Kristin Kane
ScreenWise Program Manager

[CDC Breast Cancer Updates and Resources \(Courtesy of CDC\)](#)



There may be missed opportunities to enhance communication between patients and doctors about breast cancer screening and surveillance for higher risk patients. [Recently published research](#) (PDF), led by Natasha Buchanan Lunsford, PhD, tells us more.

CDC Bring Your Brave Campaign

The CDC's [Bring Your Brave](#) site is for health care providers too. A [CME](#) course is available to learn about factors that increase risk for breast cancer in young women and ways to communicate more effectively with young women at high risk.

Take a look at *Bring Your Brave's* [resources](#) for women under age 45 to help them understand their risk of hereditary breast and ovarian cancer and take preventive measures to reduce their risk. [Read or watch our spokeswomen's stories](#) about their experiences with breast cancer and hereditary breast and ovarian cancer risk.

Pilot Project Update



The New (and Improved) ScreenWise Model - Phase 2 Highlights:

- Number of edits made to forms during Phase 1: TOO MANY TO COUNT
- Number of edits made to forms during Phase 2: ALSO TOO MANY TO COUNT
- Number of clinics who joined a Phase 2 onboarding webinar: 19
- Number of clinics that have pioneered our glorious new model as of July 15, 2017: 10 brave champions!
- Number of clinics that will be joining in the new and improved mode as of October, 2017!: All of our fantastic providers.
- Current level of excitement at the success of the new model: 10 out of 10!

With the improvements to the program forms, pilot providers have noted that the forms ‘flow really well’ and ‘are easier to use.’ Providers have also shared that they are ‘excited that eligible patients will now have access to health coaching and genetic screening.’ We are excited, too!

We look forward to bringing ALL of our enrolling providers onto this new and improved ScreenWise model this fall. We will begin our final phase (full roll out) beginning October 2017.

If you have questions or concerns about provider training, program implementation, or how this model will impact your clinic or patients, please contact our Quality Assurance Coordinator, Tessa Jaqua, at Tessa.r.jaqua@dhsosha.state.or.us or 971-673-1277.

ScreenWise New Model Trainings and Resources

ScreenWise will provide multiple opportunities for staff training on the new program model. These trainings are an opportunity for all clinic and billing staff to learn details and ask

questions about the new forms, processes and billing. These training webinars will all cover the same content.

ScreenWise New Model Training Schedule

[Clear here to register for any of the times/dates below:](#)

Thursday September 28 9-10am

Monday October 2 8-9am

Tuesday October 3 12-1pm

Wednesday October 4 4-5pm

Friday October 6 12-1pm

Monday September 25 8-9am

Wednesday Sept. 27 12-1pm

Thursday Sept. 28 12-1pm

Monday October 2 12-1pm

Tuesday October 3 3-4pm

Thursday October 5 4-5pm

Friday September 26 8-9am

Wednesday Sept. 27 3-4pm

Friday September 29 12-1pm

Monday October 2 4-5pm

Wednesday October 4 12-1pm

Friday October 6 8-9am

If your clinic needs training outside of these times, please contact

Katherine.h.mcguinness@dhsosha.state.or.us

Quality Assurance Q+A webinars

We will also be hosting Quality Assurance Q+A webinars in October, November and December. These webinars will facilitate ongoing discussion and problem solving around ScreenWise program for providers in our network.

Click on the date and time you would like to register for.

[Wednesday, October 18th 12-1pm](#)

[Wednesday, November 15th 12-1pm](#)

[Wednesday, December 13th 12-1pm](#)

I'm healthy! / ¡Soy sano! launches

The Safety Net Capacity Grant Program, now known as [I'm healthy!](#) (**¡Soy sano!** in Spanish) is in full swing. Through a network of more than 30 partner organizations—including safety net clinics and community-based organizations—I'm healthy! connects children and teens to free primary and preventive health care services.

Who qualifies for [I'm healthy!](#)? Children and teens who are under 19 and ineligible for full Oregon Health Plan benefits or qualified health plans. There is no income criteria to qualify, and no cap on the number of primary and preventive care services accessed through the program. Additionally, children and teens may be enrolled in CAWEM/CAWEM Plus and still qualify.

I'm healthy! is slated to be available through December 2017.

Please note:

- If you are assisting clients you think may be eligible for **I'm healthy!**, please connect them with an **I'm healthy!** community-based organization partner in their region. These partners screen children and teens for eligibility and connect them through referral to a partner clinic for care.
- If there is no **I'm healthy!** community-based organization partner in your area, call an I'm healthy! clinic directly.
- You can find the statewide directory of **I'm healthy!** partners on our new webpage, <http://www.imhealthy.org/>.

Questions? Contact Josie Silverman-Mendez at josie.j.silverman@dhsosha.state.or.us or 503-983-3739.

Affirming Care for Transgender & Gender Non-Conforming People:

ScreenWise wants to share a great resource for front desk staff from the National LGBT Health Education Center on providing culturally respectful care to trans and gender nonconforming patients. This resource, [Affirming Care for Transgender & Gender Non-Conforming People: Best Practices for Front-line Health Care Staff](#), has a glossary on pages 3-4 that provides definitions for terms that are becoming increasingly more common. There is a wealth of information in the resource including addressing patients respectfully, what to do when a name

on a person's medical record doesn't match the name the person goes by, and a handy chart of best practices to create a welcome environment.

ScreenWise wants to share a great resource for front desk staff from the National LGBT Health Education Center on providing culturally respectful care to trans and gender nonconforming patients. This resource, [Affirming Care for Transgender & Gender Non-Conforming People: Best Practices for Front-line Health Care Staff](#), has a glossary on pages 3-4 that provides definitions for terms that are becoming increasingly more common. There is a wealth of information in the resource including addressing patients respectfully, what to do when a name on a person's medical record doesn't match the name the person goes by, and a handy chart of best practices to create a welcome environment.

Genetics Update: ScreenWise Genetics Services

Part of the new ScreenWise model includes paying for, if medically appropriate, genetic counseling for hereditary breast and ovarian cancer syndrome (HBOC) and genetic testing for harmful mutations in the BRCA genes. We have created a resource to help implement this new part of our program, this resource *ScreenWise Provider Genetic Resources Sept 2017* is being sent out to participants of the ScreenWise New Model Training after each webinar. If you are a ScreenWise provider and have not received this resource, please contact Tessa Jaqua, our Quality Assurance Coordinator - tessa.r.jaqua@dhsoha.state.or.us

If you would like to learn more about why genetic counseling and testing for HBOC can be an important part of primary patient care, go to our ScreenWise Spring 2017 Professional Development Series webinar Back to Basics: Cancer Genetics for All Clinic Staff at: https://youtu.be/HjA_ydzBZ88.

For further information or genetics questions, please contact the ScreenWise Genetics Coordinator, Summer Cox at summer.l.cox@dhsoha.state.or.us

Walks and Events

Physical Activity Reduces the Risk of 13 Cancers¹ – So Let's Get Moving:



2017 Komen Race for the Cure

Congratulations to all the participants in this year's [Susan G. Komen Race for the Cure](#), which happened on Sunday, September 17 in Portland. Linda Swyers and Cory Zavoskey did a fantastic job leading the ScreenWise Team, which included Judy Andreasen, Kristin Kane and their various family members. ScreenWise was honored to support this important event in the fight against breast cancer, to help Komen fund local breast health initiatives and groundbreaking national research that will make an impact right here in our local community.



Join American Cancer Society Oregon events such as the 2017 Relay For Life, occurring July – November 2017, throughout Oregon. Event details at:

<https://www.cancer.org/about-us/local/events-list.listing.html/Oregon.html>

¹NCI Press Release. Increased Physical Activity Associated with Lower Risk of 13 Types of Cancer.

May 16, 2016. Accessed June 28, 2017 at

<https://www.cancer.gov/news-events/press-releases/2016/physical-activity-lowers-cancer-risk>.

Professional Development Opportunities

- **January 18, 2018** – **Educating Medical Providers about Breast Cancer in Young Women:** What guidance do you give young women who are at increased risk for breast cancer?

[Click here to register.](#)

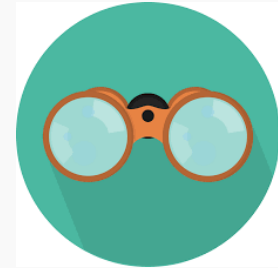
- **January 20, 2018** – **Lifestyle Medicine: Nutrition and the Metabolic Syndrome:** This course reviews the case of a 54-year-old gentleman who has full Metabolic Syndrome (i.e., impaired fasting glucose, pre-



hypertension, low HDL, high triglycerides, and abdominal obesity). At his first visit to you this patient, who is new to town, will voice concern about his elevated blood glucose as well as his poor eating behavior and pattern. [Click here to register.](#)

Stay Informed

Along with ScreenWise, the Oregon Health Authority houses other programs such as the Oregon Health Plan, WIC, and Oregon Contraceptive Care. Find out more and stay up to date with news and changes as they happen with Facebook, Twitter and our free eSubscribe email alert service.



Find OHA on [Facebook](#):



Get OHA [e-mail alerts](#)



Follow OHA on [Twitter](#)

Copyright © 2017 ScreenWise, All rights reserved.

Our mailing address is:

OHA
ScreenWise

800 NE Oregon St. Suite 370
Portland, OR 97232



Want to change how you receive these emails?
You can [update your preferences](#) or [unsubscribe from this list](#)