

# What are Oregon's school nurses\* doing?

As of 2020, registered nurses (RNs) serve students in 136 of Oregon's 197 school districts. Oregon's recommended ratio is 1 full-time RN for every 750 students. On average, RNs in Oregon schools serve at ratios closer to 1 full-time RN per 2500 students.

*\*In Oregon, "school nurse" is defined as a registered nurse who is certified by Teacher's Standards and Practices Committee (TSPC) to conduct and coordinate school health services. [ORS 342.455] Per Oregon education law, districts may hire a registered nurse, or licensed practical nurse under the supervision of a registered nurse, to provide nursing services to students. [OAR 581-022-0222]*

## Supporting students with chronic conditions.

Registered nurses assess needs, develop care plans and address accommodations to reduce health-related barriers to education. Nurse support may continue whether students are in-person or distance learning.

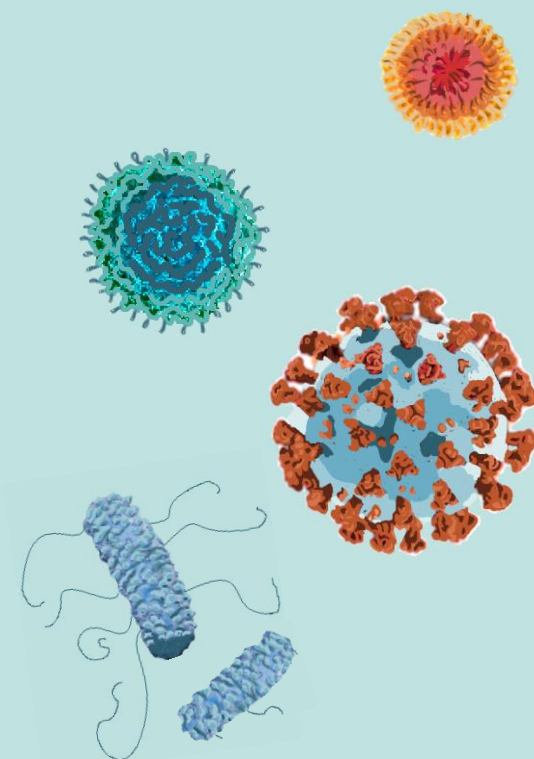


*State and federal law require districts to provide nursing services to students as needed to access Free and Appropriate Public Education.*

## School exclusions due to illness.

Nurses evaluate individuals and provide guidance about symptoms, isolation, and quarantine.

School nurses are uniquely qualified to serve as point-of-contact between schools and local public health.



## Training school staff.

Registered nurses train school staff to provide specialized student care; to follow health protocols; to respond to emergencies; and to administer medications and life-saving treatments, as allowed by Oregon laws.



## Safety efforts for in-person learning

By August 2020, **80%** of nurses were engaged in re-entry planning to support their schools.

**20%** of nurses reported a school leadership role planning and implementing *Ready Schools Blueprints*.



## Social, emotional, and mental health support.

Nurses collaborate with school mental health teams. Registered nurses diagnose "human response to condition," considering both physical and social/emotional issues. School nurses recognize whole-person health is essential for academic success.



## Guiding school health practices and policies.

Nurses help translate health information into evidence-based practice and protocols for the school setting.

Registered nurses may work with district leadership to review and revise school health policies.



## Acute care and daily needs.

Nurses respond to health issues that arise during the school day.



*While most of Oregon's students are learning remotely in 2020-2021, most of Oregon's school districts have some staff and students on campus, such as for limited in-person instruction.*

*Prepared by the Oregon Health Authority's State School Nurse Consultant, December 2020.*

### Sources:

- [2020 School Nurse Annual Report](#) published by the Oregon Department of Education
- [Oregon School Nurse Manual](#), Version 2.0, edited by the School Nurse Advisory Group
- 2020 School Nurse Surveys conducted by OHA SSNC and Oregon School Nurses' Association
- [Oregon Nurse Practice Act](#): ORS 678.021 to 023, **License required to practice nursing; use of the title "nurse"**; OAR 851-45-0000 to 0060, **Standards and Scope of Practice for Licensed Practical Nurse and Registered Nurse**; OAR 851-047-0000 to 0040 **Standards for Community Based Care Registered Nurse Delegation Process**.
- Oregon education laws: ORS 342.455 **Definition of school nurse**; ORS 336.201 **Nursing services provided by district**; OAR 581-015-2000, **Special Education**; OAR 581-022-2220, **Health Services**.