

Oregon School-Based Health Center Program: Overview of the Standards for Certification



PUBLIC HEALTH DIVISION
Adolescent and School Health



Contents

- Context and the Part 1: School-Based Health Center (SBHC) Introduction Presentation
- History and Framework of the SBHC Standards for Certification
- Highlights of the SBHC Minimum Requirements
- Opportunities to Learn More About Oregon SBHCs and the Standards for Certification



CONTEXT AND THE PART 1: SBHC INTRODUCTION PRESENTATION



PUBLIC HEALTH DIVISION
Adolescent and School Health



The Oregon SBHC State Program Office

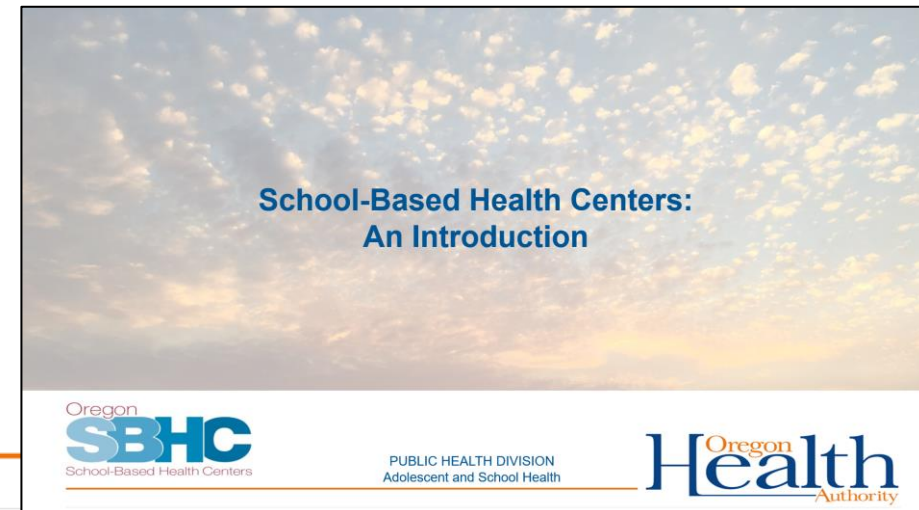
The Oregon Health Authority Oregon SBHC State Program Office is a multi-disciplinary team of enthusiastic folks that:

- Certifies SBHCs
- Supports planning for SBHCs
- Provides funding for certified SBHCs
- Collects and shares data
- Supports SBHCs to provide high quality adolescent health services
- Serves as a resource for community and partners



Presentation Part 1 - *SBHCs: An Introduction*

- This presentation is preceded by an introductory presentation about the school-based health center (SBHC) approach and SBHCs in Oregon
- If you are new to school-based health centers or would like to refresh your memory, please reference the *SBHCs: An Introduction* presentation found on our website: www.healthoregon.org/sbhc on either of the following pages:
 - [Planning for a New School-Based Health Center](#)
 - [Trainings and Presentations](#)



Notes About This Presentation

- Broad overview of the Standards for Certification, not a substitute
- It is meant as an introduction and does not cover many details of the program minimum requirements
- Please read the full Standards for Certification and contact the SBHC State Program Office to learn more
- The complete Oregon SBHC Standards for Certification can be found on our website: www.healthoregon.org/sbhc

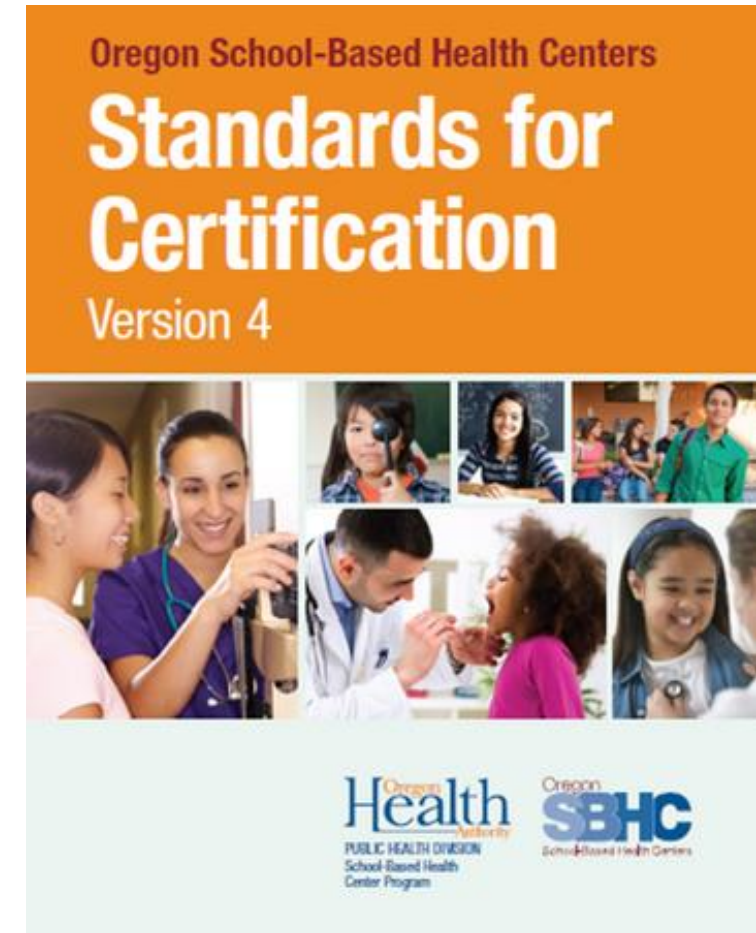
HISTORY AND FRAMEWORK OF THE OREGON SBHC STANDARDS FOR CERTIFICATION

What are the Oregon SBHC Standards for Certification?

- They are procedures and criteria the Oregon School-Based Health Center Program uses to certify, suspend, and decertify SBHCs
- SBHCs are in Oregon Administrative Rules (333-028-0200 through 333-028-0250)
- The minimum requirements for certification are detailed in the [Oregon SBHC Standards for Certification](#)
- SBHC certification is voluntary



PUBLIC HEALTH DIVISION
Adolescent and School Health



When Were the Standards for Certification Created and Why?

- The Standards for Certification were first developed in 2000 to:
 - Establish a clearly defined SBHC model for Oregon
 - Reduce site-to-site variability
 - Improve SBHC sustainability and
 - Increase the availability of quality health care for children and adolescents
- The Standards for Certification are minimum requirements
- They are designed to allow for community flexibility to meet requirements

What are the Standards for Certification Based On?

- The Standards for Certification have three areas of focus based on other state and nationally evidence-based recommendations, guidance, and programs.
 1. **Comprehensive best practice**
 - [American Academy of Pediatrics \(AAP\) Bright Futures](#)
 2. **Youth-friendly services**
 - [Society for Adolescent Health and Medicine \(SAHM\)](#)
 - [American Academy of Pediatrics \(AAP\)](#)
 - [Advocates for Youth](#)
 3. **Population-based, patient-centered care**
 - [Oregon Patient-Centered Primary Care Home \(PCPCH\) Standards for Recognition](#)
 - [Oregon Coordinated Care Organization \(CCO\) incentive metrics](#)

What is Covered in the Standards for Certification?

- Certification Process
- Sponsoring Agency
- Facility
- Operations/Staffing
- Comprehensive pediatric health care
- Data collection/reporting
- Billing



MINIMUM REQUIREMENT HIGHLIGHTS



PUBLIC HEALTH DIVISION
Adolescent and School Health



Certification Process

- There are specific processes for SBHCs to become initially certified
 - These are completed by sponsoring agencies and medical sponsors, not schools
- Certified SBHCs fulfill annual certification requirements
- SBHCs complete a re-certification process every two years
- The Standards for Certification and our website include detailed information about the certification and re-certification processes.
 - www.healthoregon.org/sbhc
 - [Oregon SBHC Standards for Certification](#)



Sponsoring Agency

- SBHCs are operated through partnerships and agreements between the school, sponsoring agency(ies), and medical sponsor
- Health services are provided by a medical sponsor and are an essential SBHC partner
- SBHCs may have multiple sponsoring agencies that provide funding, insurance, and more
- The [Standards for Certification](#) includes specific requirements for sponsoring agencies and medical sponsor



Who Provides SBHC Health Services?

- SBHCs medical sponsors are generally the following types of agencies:
 - Federally Qualified Health Centers (FQHCs)
 - Local Public Health Departments
 - Rural Health Clinics
 - Hospitals or Health Systems
 - Private Practice Primary Care Providers
 - Community Mental Health Agencies
- School/District staff generally do not provide health services in an SBHC



Facility

- SBHCs are located in a defined space on school grounds, excluding mobile units such as vans or buses
- SBHC facilities vary widely around the state and all include the following:
 - Waiting/reception area
 - Exam room(s) with sink
 - Bathroom
 - Office area
 - Secure records and supplies storage areas
 - Designated lab space
 - Ability to have confidential conversations, phone calls, faxes, etc.
- Please reference the [Standards for Certification](#) for the full SBHC facility requirements

SBHC Facility Examples

- SBHCs can be located in a variety of location on school grounds and have layouts that are unique to their local area
- The following pages include images that are examples of existing certified SBHCs

Gilcrest SBHC, Klamath County



SBHCs can be in Stand Alone Buildings

Ione Community Clinic, Morrow County



Sisters SBHC, Deschutes County



SBHCs can be in School Portables

Hood River SBHC, Hood River County



Mitchell SBHC, Wheeler County



SBHCs can be Inside the Main School Building

Roosevelt Student Health Center
Multnomah County



Clackamas Health & Wellness Center,
Clackamas County



SBHCs Waiting Rooms



SBHC Exam and Mental Health Rooms



Operations/Staffing: Hours of Operation

- SBHCs must be open and offering services 3 days per week when school is in session
- SBHCs must be open for services at least 15 hours per week
- SBHCs get to decide their exact operating schedule to meet youth needs and can be open more than 15 hours per week

Minimum Hours of Operation

3 days/15 hours per week

Operations/Staffing: Staffing

- SBHCs can have a variety of staffing models to best serve youth at their school including exceeding the minimum staffing hours
- Please reference the [Standards for Certification](#) for the full SBHC operations and staffing requirements

SBHC staffing type	Minimum hours per week	Minimum days per week
Office/health/medical assistant	15 hours	Unspecified
Primary care provider	10 hours	2 days
Additional health professional (medical/behavioral/oral health)	10 hours	Unspecified

Comprehensive Pediatric Health Care: SBHC Access



- All students at the school are eligible for services
 - Students cannot be denied access to services based on their:
 - Ability to pay
 - Health insurance coverage
-
- Minors have certain rights to consent for their own health services. SBHCs must follow the same minor consent laws and regulations as any healthcare clinic.
 - More information about minor consent laws for health services can be found at:
<https://www.oregon.gov/oha/PH/HEALTHYPEOPLEFAMILIES/YOUTH/Pages/Resources.aspx>

Comprehensive Pediatric Health Care: Services

- SBHCs provide pediatric health care in line with nationally recognized standards of care, including recommendations from the [American Academy of Pediatrics Bright Futures](#) guidelines
- SBHC providers use [Bright Futures](#) to determine age-appropriate levels of service



Bright Futures™

prevention and health promotion for infants,
children, adolescents, and their families™

Oregon
SBHC
School-Based Health Centers

PUBLIC HEALTH DIVISION
Adolescent and School Health

Oregon
Health
Authority

Comprehensive Pediatric Health Care: Services



- SBHC service minimum requirements include but aren't limited to:
 - Physical, mental, vision, and dental health screenings
 - Physical health services (Well-child exams, sick visits, minor injury treatments, immunizations, reproductive health services, etc.)
 - Behavioral health services
 - Health education
- A full list of service minimum requirements can be found in the Standards for Certification on our website: www.healthoregon.org/sbhc

Data Collection/Reporting & Billing

- SBHCs will need to maintain a data collection system and share certain health visit data with our office
- SBHCs must collect feedback from their youth patients through confidential student satisfaction surveys
 - Our office reviews and shares survey data with the SBHC to support SBHC improvements
- All SBHCs need the ability to bill the Oregon Health Plan (OHP), also known as Medicaid



OPPORTUNITIES TO LEARN MORE ABOUT OREGON SBHCS AND THE STANDARDS FOR CERTIFICATION



PUBLIC HEALTH DIVISION
Adolescent and School Health



Recipes for Success



Thinking about starting an SBHC?
Check out the [Planning for A New SBHC](#) page on our website

Where do I find more information?

The Oregon SBHC State Program Office website is a great place to start! It includes information about:

- SBHC certification
- Data
- Funding
- Reports and publications
- Training and presentations
- Planning for a new SBHC
- Many other projects and programs coordinated by our office

www.healthoregon.org/sbhc

Handy SBHC Program Website Quick Links

- [SBHC Standards for Certification](#)
- [Map of Certified SBHCs in Oregon](#)
- [SBHC Medical Sponsor List](#)
- [SBHC Certification Standards webpage](#)
- [Planning for a new SBHC webpage](#), which includes:
 - School-Based Health Centers: An Introduction (presentation)
 - School Health Services Needs Assessment Checklist (Planning Part 1)
 - School-Based Health Center Implementation Strategies Checklist (Planning Part 2)

Contact Us

School-Based Health Center Program

Oregon Health Authority - Public Health Division

P: 971-673-0249

F: 971-673-0250

sbhc.program@odhsoha.Oregon.gov

www.healthoregon.org/sbhc



PUBLIC HEALTH DIVISION
Adolescent and School Health

