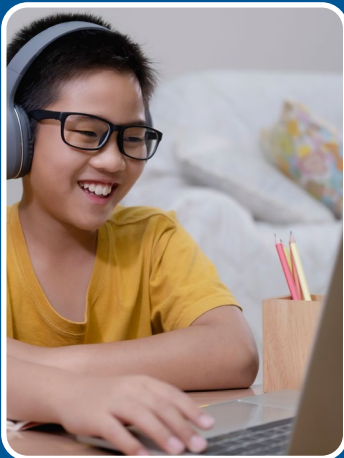
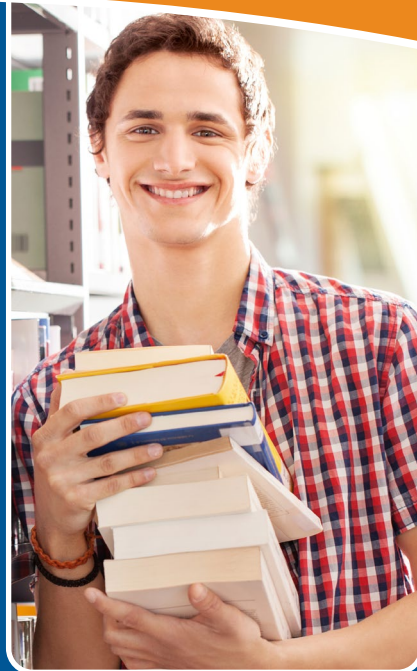


OREGON

School-Based Health Centers 2023 Status Update



About Oregon School-Based Health Centers (SBHCs):

SBHCs are clinics located in schools or on school grounds. They are a vital community resource with a youth-centered model. SBHCs support young people's health and well-being. Oregon SBHCs provide medical care, behavioral health services and dental care. These easily accessible services support youth to grow, learn and thrive.

SBHCs have existed in Oregon since 1986. They succeed through public-private partnerships between:

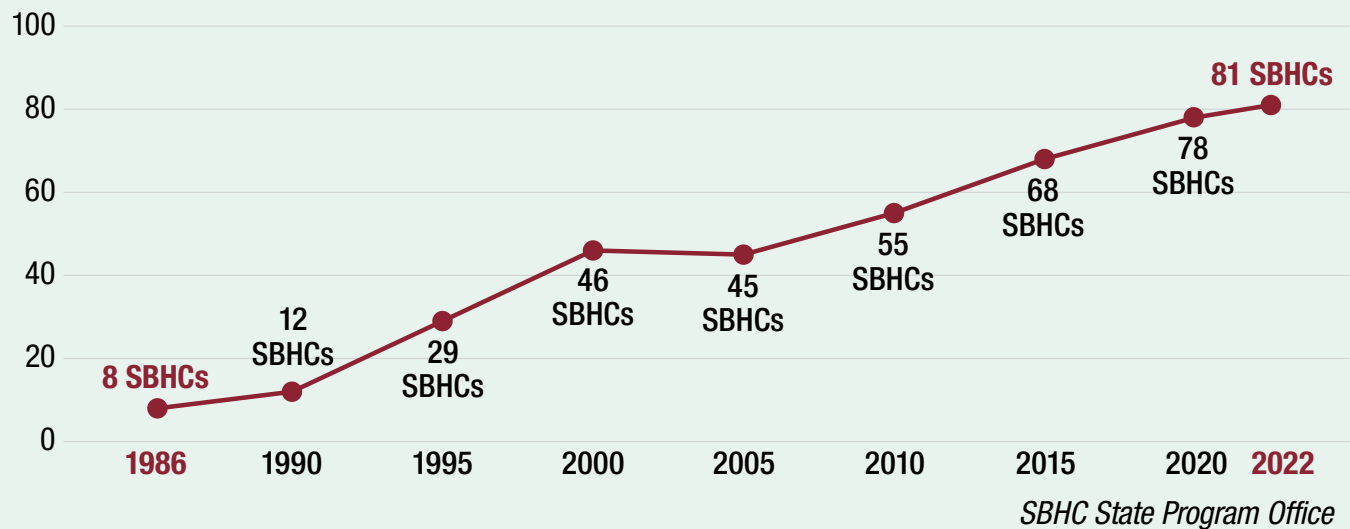
- The Oregon Health Authority – Public Health Division
- School districts and education service districts
- Local public health authorities
- Health care providers
- Parents/guardians
- Students, and
- Community members.

SBHCs provide services in person. In some cases, they also provide services by phone or video (telehealth). By providing easy access to health care, SBHCs reduce barriers that keep students from seeking the health services they need.

Oregon SBHCs commonly provide*:

- Well-child exams
- Sick visits
- Minor injury treatment
- Vision, dental and other health screenings
- Immunizations
- Substance use screening and assessment
- Mental health counseling
- Reproductive health services
- Prevention and wellness messaging
- Health-related classroom presentations

Number of SBHCs over time (1986-present)



* Service provision varies by SBHC

SBHC fast facts from the 2022–2023 service year

As of July 1, 2022, there are:

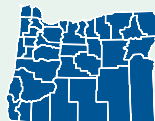
81 State-certified SBHCs in 26 counties

Types of schools



52 high schools
6 middle schools
10 elementary schools
13 combined-grade campuses

Types of counties

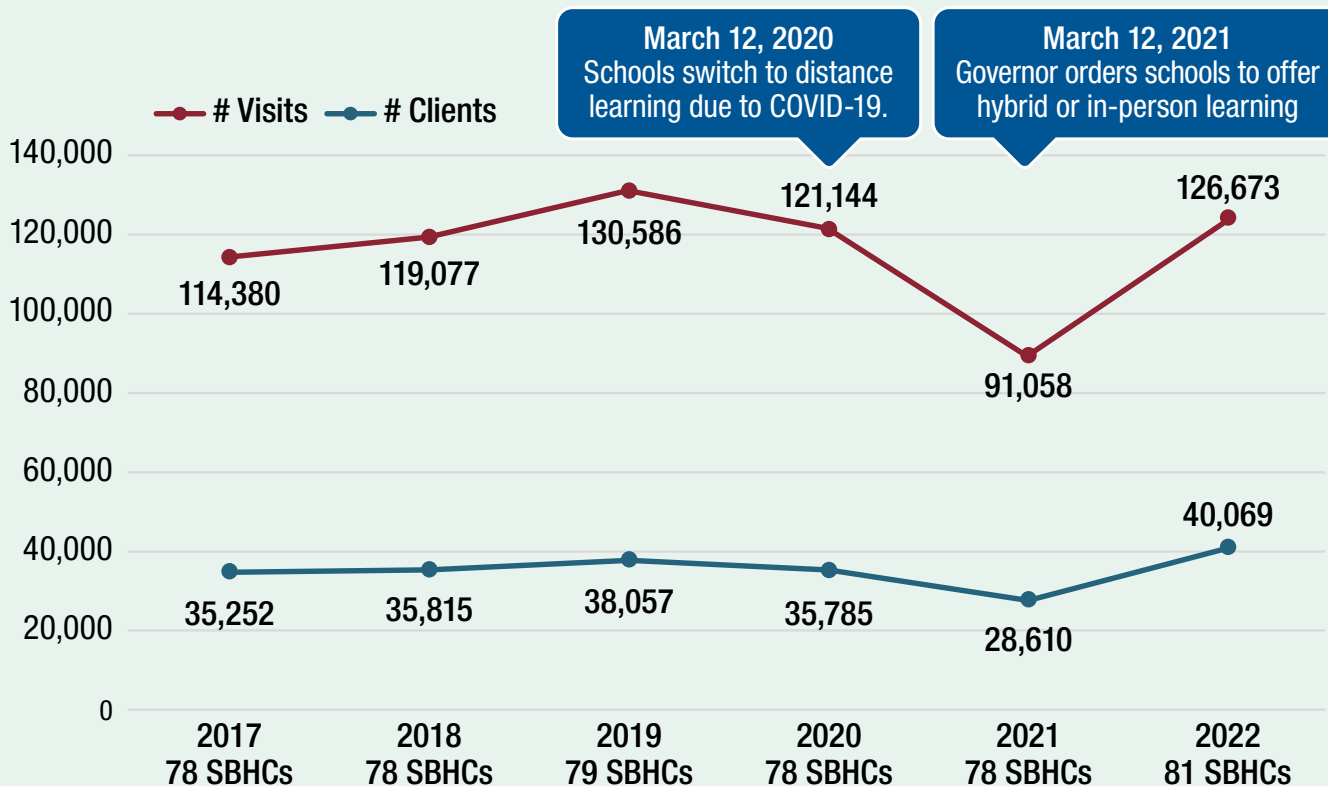


38 urban
39 rural
4 frontier
 64% are in primary care health professional shortage areas (HPSAs)

All SBHCs are sponsored by a medical entity:

- 73% are federally qualified health centers (FQHCs)
- 46% are state-recognized patient-centered primary care homes (PCPCH)

Number of SBHC visits and clients, school years ending 2017–2022



Source: Oregon SBHC encounter data

SBHCs in the 2021–2022 service year

Unless otherwise noted, all statistics are from Oregon SBHC encounter data for the 2021-2022 service year (July 1, 2021-June 30, 2022).



SBHCs provided **126,673 visits** for **40,069 clients**



66,014 school-aged youth (5-21 years) had access to an SBHC at their school*



95% of SBHCs had a behavioral health[†] provider onsite



15% of SBHCs had a dental provider onsite



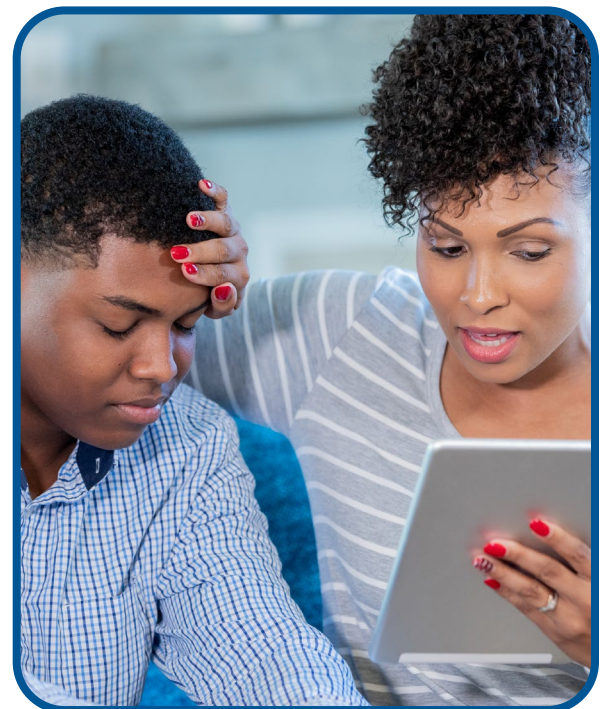
If it wasn't for the School-Based Health Center, I don't know if I'd be where I'm at today.

– SBHC client



Now more than ever it is evident that youth need supportive spaces to rebuild skills and strengthen new ones to increase prosocial behaviors and improve overall health and well-being.

– SBHC therapist



* Oregon Department of Education. Student Enrollment Report 2021-2022 [Internet]. 2022. Available from: <https://www.oregon.gov/ode/reports-and-data/students/Pages/default.aspx>

† Behavioral health is used in this report to encompass mental health, behavioral health and substance use services

Many SBHCs offered some services via telehealth:



SBHCs offered services via telehealth to better serve clients during the COVID-19 pandemic

Percent of SBHC visits (ages 5–21) delivered via telehealth, during school years ending 2020–2022

2020: **8%**
2021: **36%**
2022: **15%**



Telehealth: Primary care

68 SBHCs offered primary care via telehealth

12% of primary care visits were delivered via telehealth



Telehealth: Behavioral health

66 SBHCs offered behavioral health via telehealth

26% of behavioral health visits were delivered via telehealth



The access to therapy and medical care at our School-Based Health Center helped begin the student's process of healing and it has remained a safe place that she trusts to return for care when she needs it.

– SBHC therapist



In the 2021–2022 service year,

a subset of Oregon SBHCs began collecting data on client school enrollment and submitting these data to the Oregon School-Based Health Center State Program Office (SPO). These enrollment data are a new field available only to SBHCs using the OCHIN Epic Electronic Health Records system, which comprises 73% (N=59) of Oregon SBHCs. School enrollment is not a reporting requirement for SBHCs and the data are incomplete. However, the SPO received enrollment data on 59% of all SBHC clients between ages 5 and 18, revealing the wide reach of SBHCs across communities. We learned that:

Youth clients of these 59 SBHCs came from over 650 schools, including public, private, and alternative schools as well as homeschool environments.

Each of these 59 SBHCs served youth from 32 schools on average.

SBHCs support access for school-aged youth

State-certified SBHCs are required, at minimum, to serve students at the SBHC host school. However, many SBHCs elect to expand services to include:





- Students within the district
- Siblings
- Teachers and staff
- Parents/guardians
- The broader community

65% of clients were school-aged youth*

On average, **school-aged clients accessed the SBHC** about **3.5 times per year**



The decision to serve populations beyond the host school is determined locally. The following chart provides summary data on clients and visits for all ages vs. school-aged (5–21 years) clients.

	All ages	School-aged (5–21 years)
 Number of clients	40,069	25,972
 Number of visits	126,673	90,065
 Behavioral health visits	42,464	39,404
 Telehealth visits	20,185	13,200

Data source: Oregon SBHC encounter data

* This 65% rate is a marked decrease from prior years when school-age youth made up a higher percentage of SBHC visits. For example, in the 2019-2020 service year, 74% of clients were school-aged youth. This change is likely a result of the COVID-19 pandemic and major Oregon wildfires. SBHCs have expanded their focus to serve their local communities with testing, vaccines and health-related social needs.

SBHCs help advance the Oregon Health Authority's goal of eliminating health inequities by 2030. SBHCs are a trusted source of care for many youths who belong to communities that have been economically or socially marginalized.

In 22 SBHCs more than half of the youth clients were Hispanic/Latinx, African American/Black, American Indian/Alaskan Native, Asian, Native Hawaiian/Pacific Islander, or other youth of color

45% of SBHC school-aged clients identified as persons of color

School-aged clients receiving services were:

- **68% White** (46% White, non-Hispanic)
- **28% Hispanic/Latinx**
- **6% Black**
- **4% Asian**
- **3% American Indian or Alaska Native**
- **2% Native Hawaiian or other Pacific Islander**
- **11% unknown race and ethnicity**

SBHC school-aged clients reported speaking 63 languages

79% English

15% Spanish

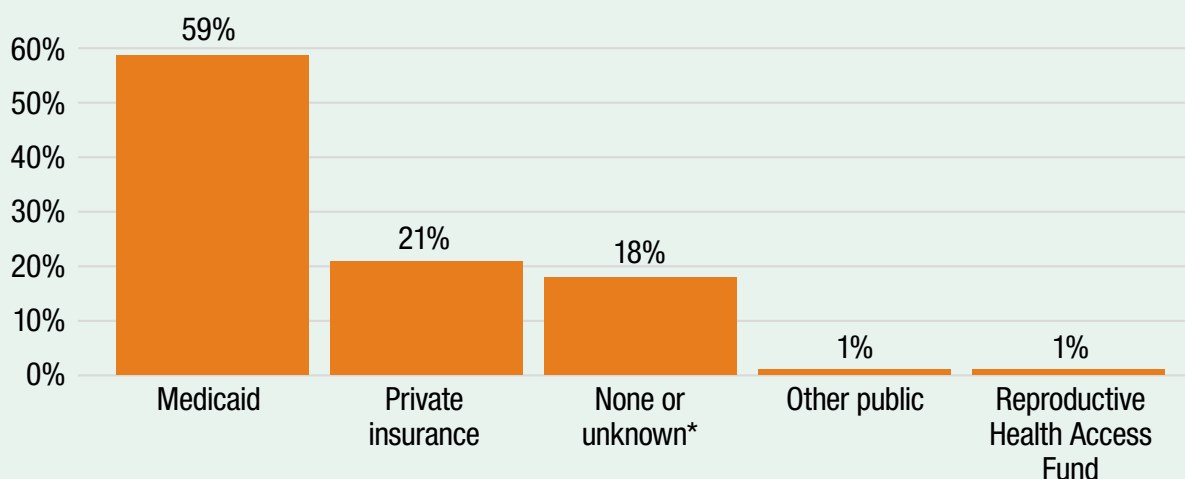
0.4% Vietnamese

0.2% Russian

2.2% Other

2.5% Unknown/declined

Health insurance status of SBHC school-aged clients at the first visit, 2021-2022



Source: Oregon SBHC encounter data

* "None or unknown" categories include some clients who have insurance. However, that information is not captured in the data for a number of reasons: It is not a billable visit; it is a confidential visit, so insurance is not billed; the student does not know or give evidence of their insurance.

Reasons for SBHC visits among school-aged youth, 2021–2022

55%
Primary
care

41%
Behavioral
health

1%
Dental
health

28%
Preventive care (well
visits, immunizations,
reproductive health)

27%
Acute care or other
miscellaneous

Source: Oregon SBHC encounter data

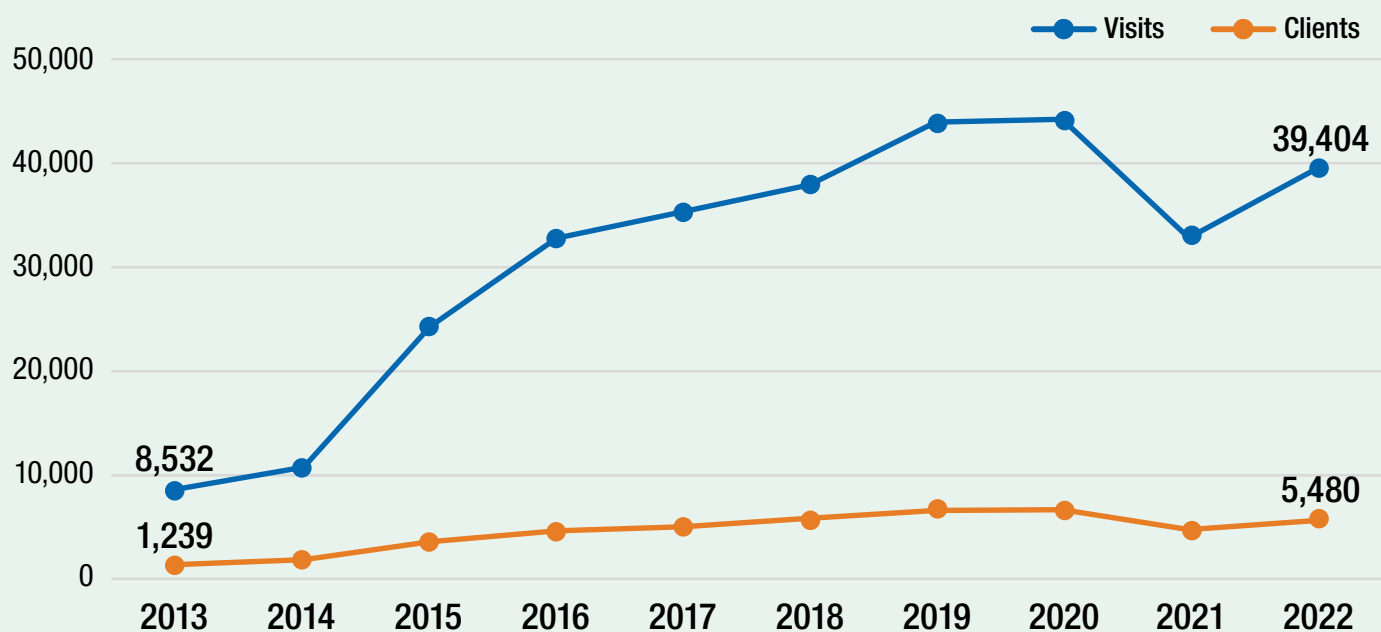


35% of school-aged clients
received an immunization



39% of school-aged clients
received a well visit

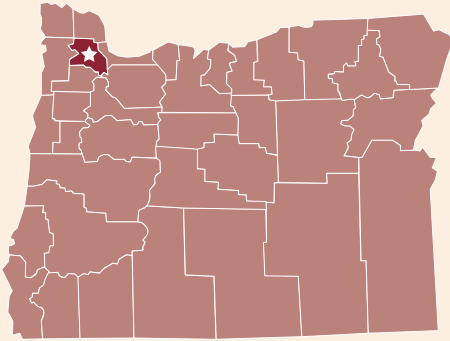
SBHC trends in number of behavioral health visits and clients, school years ending 2013–2022



Source: Oregon SBHC encounter data

SBHC highlights

SBHCs across the state provide timely youth-centered care for young people in their communities. Many SBHCs also work with students to lead schoolwide prevention and awareness activities. Here are just a few examples of the excellent work SBHCs and youth leaders are doing to support health and wellness at their schools.



Washington County: Tigard and Century High School SHACs

Virginia Garcia Memorial Health Center supports Student Health Advisory Committees (SHACs) at their SBHCs in four Washington County high schools.

During the 2021-2022 school year, two SHACs developed surveys to:

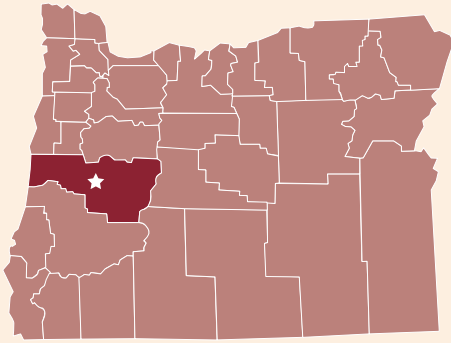
- Better understand the mental health needs of their fellow students, and
- Strategize solutions to help meet these needs.

Tigard High School SHAC members were concerned about the test-taking environment in their school. They also wanted to better understand the testing anxiety of their peers. The SHAC decided to develop a survey, which was completed by 38 students. The survey results helped the SHAC to develop a resource list for students with more tools to combat anxiety and stress from test-taking pressures. The SHAC hopes these skills will continue to help students throughout their academic journeys.



Century High School SHAC members wanted to assess their peers' mental health needs and barriers to accessing services. This SHAC also developed a survey, which received 264 responses. There were many detailed responses about gaps in service needs. The students analyzed the data and made recommendations for their school administrators to help better support Century students' mental health needs. This project affected the students who took part in the survey. Therefore, they offered their stories in the hope of increased access to resources. This project has the potential to affect the entire campus as SHAC works toward establishing an anonymous communication box. This box will allow students to offer feedback on the support they need. It will also increase communication and trust between students and staff.





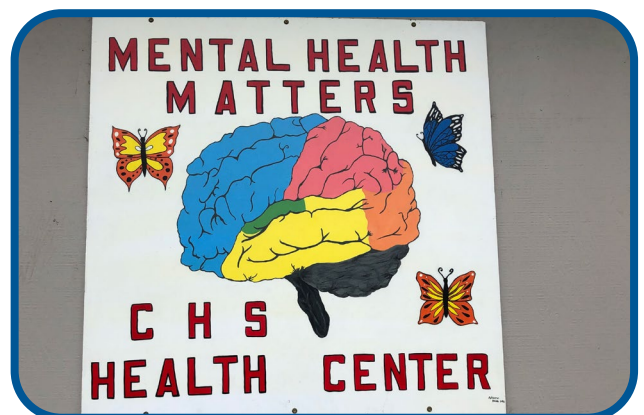
Lane County: Churchill High School Student Health Center

The Churchill High School Youth Action Council members developed projects during the 2021-2022 school year to support mental health awareness, improve the school climate, and promote youth access to their Student Health Center.

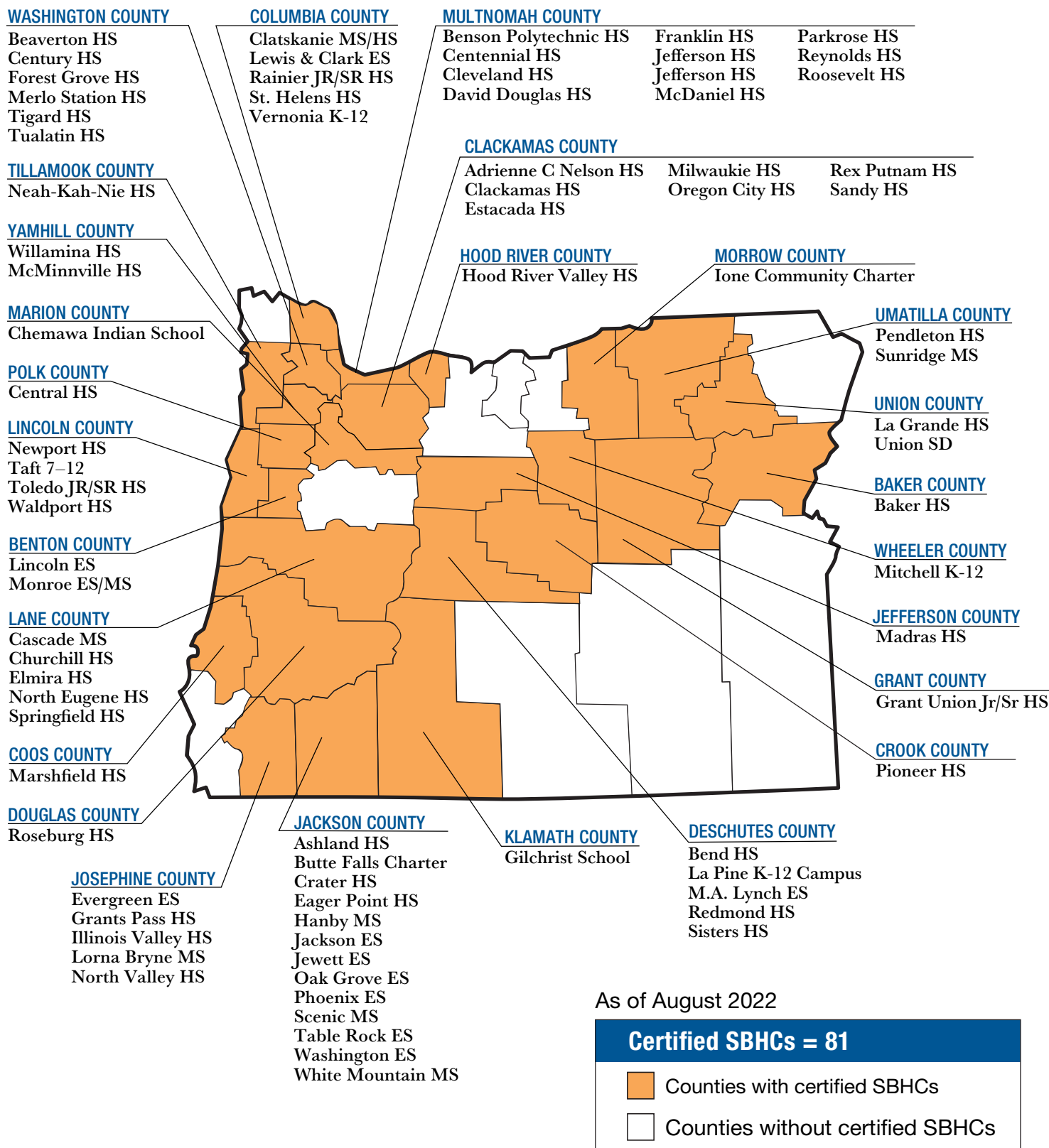
Major activities included:

- Educating nearly 100 students at the annual Churchill High School Club Fair about minor rights to access health care,
- Creating mural paintings to mount on the outside of the SBHC and draw attention to the health center. The murals highlight the students' talent and convey positive messaging, such as "Mental Health Matters" and "pax, salus et dilectio," Latin words meaning "Peace, Safety and Love" and
- Hosting or taking part in events that promoted community and emotional wellness on campus, such as Mental Health Awareness Month and the Churchill High School Spring Festival. As part of these events, the Youth Action Council:
 - » Brought a therapy dog to campus
 - » Coordinated creative lunchtime activities
 - » Sent Valentine's Grams with positive messages to teachers and staff, and
 - » Hosted lawn games with prizes.

Youth Action Council students felt they helped to create a healthy community on campus. These students also helped build connections among students and staff. The SBHC coordinator expressed her appreciation for being a part of an SBHC community that supports Churchill High School students. This community involves partners from the medical sponsor, the mental health therapy group, local businesses, and the school district.



Oregon School-Based Health Centers 2022–2023



SBHC medical sponsor list, 2022-23

County	SBHC school name	Medical sponsor
Baker	Baker High School	Baker County Health Department
Benton	Lincoln Elementary School*	Community Health Centers of Benton and Linn Counties†
Benton	Monroe Grade School*	Community Health Centers of Benton and Linn Counties†
Clackamas	Adrienne C Nelson High School	Clackamas County Health Centers†
Clackamas	Clackamas High School	Clackamas County Health Centers†
Clackamas	Estacada High School	Orchid Health
Clackamas	Milwaukie High School*	Outside In†
Clackamas	Oregon City High School	Clackamas County Health Centers†
Clackamas	Rex Putnam High School	Clackamas County Health Centers†
Clackamas	Sandy High School	Clackamas County Health Centers†
Columbia	Clatskanie MS/HS	Columbia Health Services
Columbia	Lewis & Clark Elementary School*	Columbia Health Services
Columbia	Rainier Jr/Sr High School*	Columbia Health Services
Columbia	St. Helens High School	Columbia Health Services
Columbia	Vernonia K-12	Columbia Health Services
Coos	Marshfield High School*	Waterfall Community Health Center†
Crook	Pioneer High School*	Mosaic Medical†
Deschutes	Bend Senior High School*	Mosaic Medical†
Deschutes	LaPine K-12 School*	La Pine Community Health Center†
Deschutes	M.A. Lynch Elementary School	Mosaic Medical†
Deschutes	Redmond High School	Mosaic Medical†
Deschutes	Sisters High School	St. Charles Health System
Douglas	Roseburg High School	Aviva Health†
Grant	Grant-Union Jr/Sr High School	Grant County Health Department
Hood River	Hood River Valley High School	One Community Health†
Jackson	Ashland High School	La Clinica†
Jackson	Butte Falls Charter School*	Rogue Community Health†
Jackson	Crater High School*	La Clinica†
Jackson	Eagle Point High School*	Rogue Community Health†
Jackson	Hanby Middle School	La Clinica†
Jackson	Jackson Elementary School*	La Clinica†
Jackson	Jewett Elementary School*	La Clinica†
Jackson	Oak Grove Elementary School*	La Clinica†
Jackson	Phoenix Elementary School*	La Clinica†
Jackson	Scenic Middle School*	La Clinica†
Jackson	Table Rock Elementary School	Rogue Community Health†

continued on following page

* Recognized by the Oregon as a Patient-Centered Primary Care Home.

† Indicates School-Based Health Center is a federally qualified health center site.

continued from previous page

County	SBHC school name	Medical sponsor
Jackson	Washington Elementary School*	La Clinica†
Jackson	White Mountain Middle School	Rogue Community Health†
Jefferson	Madras High School	Mosaic Medical†
Josephine	Evergreen Elementary School*	Siskiyou Community Health Center†
Josephine	Grants Pass High School	Siskiyou Community Health Center
Josephine	Illinois Valley High School*	Siskiyou Community Health Center†
Josephine	Lorna Byrne Middle School*	Siskiyou Community Health Center†
Josephine	North Valley High School	Siskiyou Community Health Center†
Klamath	Gilchrist School*	La Pine Community Health Center†
Lane	Cascade Middle School	Bethel Health Center/PeaceHealth Medical Group
Lane	Churchill High School	PeaceHealth Medical Group
Lane	Elmira High School	Orchid Health
Lane	North Eugene High School	PeaceHealth Medical Group
Lane	Springfield High School*	Community Health Centers of Lane County†
Lincoln	Newport High School*	Lincoln County Health & Human Services†
Lincoln	Taft High 7-12	Lincoln County Health & Human Services†
Lincoln	Toledo Jr/Sr High School	Lincoln County Health & Human Services†
Lincoln	Waldport High School	Lincoln County Health & Human Services†
Marion	Chemawa Indian School	Indian Health Services
Morrow	Ione Community Charter School	Morrow County Health District
Multnomah	Benson High School	OHSU Family Medicine Richmond†
Multnomah	Centennial High School*	Multnomah County Health Department†
Multnomah	Cleveland High School*	Multnomah County Health Department†
Multnomah	David Douglas High School*	Multnomah County Health Department†
Multnomah	Franklin High School*	Multnomah County Health Department†
Multnomah	Jefferson High School*	Multnomah County Health Department†
Multnomah	McDaniel High School*	Multnomah County Health Department†
Multnomah	Parkrose High School*	Multnomah County Health Department†
Multnomah	Reynolds High School	Multnomah County Health Department†
Multnomah	Roosevelt High School*	Multnomah County Health Department†
Polk	Central High School*	Salem Health
Tillamook	Neah-Kah-Nie High School	Nehalem Bay Health Center†
Umatilla	Pendleton High School	Umatilla County Public Health
Umatilla	Sunridge Middle School	Umatilla County Public Health

continued on following page

* Recognized by the Oregon as a Patient-Centered Primary Care Home.

† Indicates School-Based Health Center is a federally qualified health center site.

continued from previous page

County	SBHC school name	Medical sponsor
Union	La Grande High School	Center for Human Development, Inc.
Union	Union SD	Center for Human Development, Inc.
Washington	Beaverton High School	Virginia Garcia Memorial Health Center [†]
Washington	Century High School	Virginia Garcia Memorial Health Center [†]
Washington	Forest Grove High School	Virginia Garcia Memorial Health Center [†]
Washington	Merlo Station High School	Neighborhood Health Center [†]
Washington	Tigard High School	Virginia Garcia Memorial Health Center [†]
Washington	Tualatin High School	Neighborhood Health Center [†]
Wheeler	Mitchell School	Asher Community Health Center [†]
Yamhill	McMinnville High School	Sunrise Family Clinic
Yamhill	Willamina High School*	Virginia Garcia Memorial Health Center [†]

* Recognized by the Oregon as a Patient-Centered Primary Care Home.

[†] Indicates School-Based Health Center is a federally qualified health center site.



PUBLIC HEALTH DIVISION

School-Based Health Center Program

800 NE Oregon St., Suite 805

Portland, OR 97232

503-798-2852

SBHC.program@odhsoha.oregon.gov

You can get this document in other languages, large print, braille or a format you prefer free of charge. Contact the School-Based Health Center Program at SBHC.program@odhsoha.oregon.gov or 971-673-0871. We accept all relay calls.