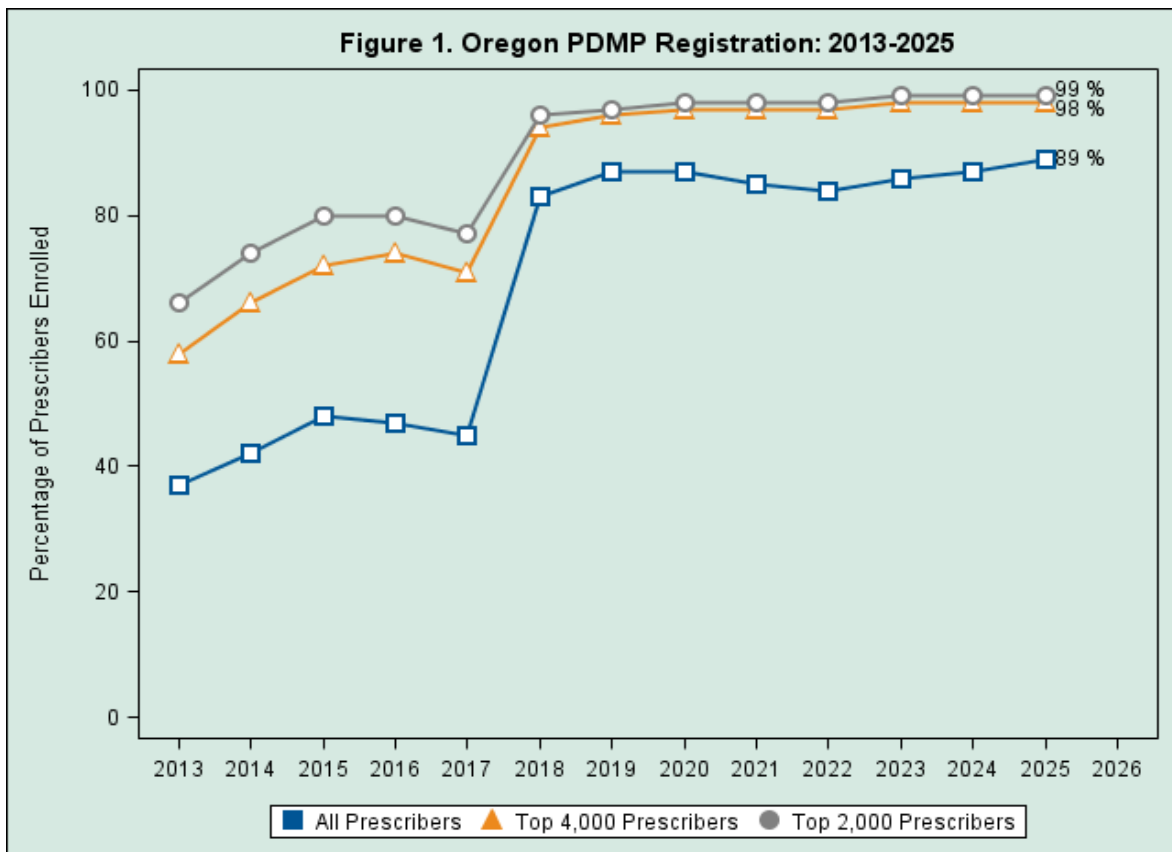


2nd Quarter 2025 Report (Apr. 1 - June 30, 2025)

Percent change evaluated relative to 2nd Quarter 2024

Summary

- As of January 2025, the Oregon PDMP includes Schedule V drugs and veterinarian-prescribed drugs.
- Prescriber enrollment increased to 89%, up from 86% in the 2nd quarter of 2024 (Table 3, Figure 1).
- Gateway automated queries rose 3.1% and web queries increased 3.4% compared to Q2 2024 (Table 1). However, integrated report viewing declined following a 2024 spike in activity.
- Total prescriptions for controlled substances rose 8.6%, largely due to the addition of Schedule V and veterinarian-prescribed drugs (Table 5).
- Stimulant prescriptions continue to increase with amphetamine prescriptions increasing 10% making it the most prescribed drug in the PDMP. Methylphenidate prescriptions also increased 11.2% (Table 5).
- Pregabalin entered the top prescriptions list following the Schedule V inclusion (Table 5).
- PDMP gateway use remains stable with active facilities increasing and active users remaining steady.



- *Figure 1* shows the number of prescribers enrolled in the PDMP over time from 2013-2025. Registration has remained consistent since 2018.

Table 1. Oregon Prescriber Enrollment and Use: Apr. 1 - June 30, 2025.

User Type	Prescribers	Enrolled	Web Query	Automated Query	Total Query
All Prescribers (by DEA)	27,077	24,176 (89.3%)	1,262 (5.2%)	14,460 (59.8%)	14,634 (60.5%)
Top 4,000 Prescribers	4,000	3,911 (97.8%)	783 (20.0%)	3,532 (90.3%)	3,590 (91.8%)
Top 2,000 Prescribers	2,000	1,970 (98.5%)	496 (25.2%)	1,793 (91.0%)	1,827 (92.7%)

- 27,077 Oregon providers prescribed controlled substances in Q2 2025.
- At quarter's end, 60.5% of enrolled prescribers, 91.8% of the top 4,000 prescribers, and 92.7% of the top 2,000 prescribers submitted a query through the web portal and/or gateway integration.

- Query activity declined compared to Q2 2024, when 74.5% of enrolled prescribers submitted queries.

Table 2. Special Requests: Apr. 1 - June 30, 2025.

Measure	Count
Patient Records	19
Healthcare Boards	41
Law Enforcement	11
Total Special Requests	71

- 71 special requests were received and processed by PDMP staff.
- Healthcare boards were the most frequent originators of these requests.

Table 3. PDMP Queries Summary Statistics: Apr. 1 - June 30, 2025..

User Type	Queries	% Change ¹	Automated Queries	% Change ¹	Reports Viewed	% Change ¹
Healthcare providers	79,231	-4.6%	6,672,471	2.9%	816,370	-14.8%
Pharmacies	56,997	-6.7%	1,539,263	4%	811,246	-25.5%
Delegates	176,404	11.4%	NA	NA	NA	NA
Total Queries²	312,803	3.4%	8,211,734	3.1%	1,627,616	-20.5%

¹Percent change evaluated relative to same time period during the prior year.

²Query data drawn from Appriss AWAxE web portal, PMPi Gateway audit file and EDIE supplementary audit file. Queries de-duplicated using last name, date of birth, prescriber ID, and date of query.

- Web portal queries increased by 3.4%, with the largest gains among delegates.
- Automated queries increased modestly (3.1%), while integrated report viewing fell 20.5% compared to the spike in query activity from 2024.

Table 4. Activity for PDMP-Enrolled Providers: Apr. 1 - June 30, 2025.

Discipline	Total Accounts (by DEA)	% Change	Web Users	% Change	Integrated Users	% Change
MD/PA/DO	20,753	-0.3%	1,348	-10.0%	16,280	11.2%
NP/CNS-PP	5,700	4.5%	1,203	2.6%	4,354	13.9%
RPh	3,741	8.6%	1,194	-7.4%	643	14.8%
Delegates	3,091	12.1%	1,832	3.7%	NA	NA
DDS/DMD	2,607	-1.5%	302	-6.2%	349	6.4%
ND	602	4.0%	165	-8.8%	482	19.0%

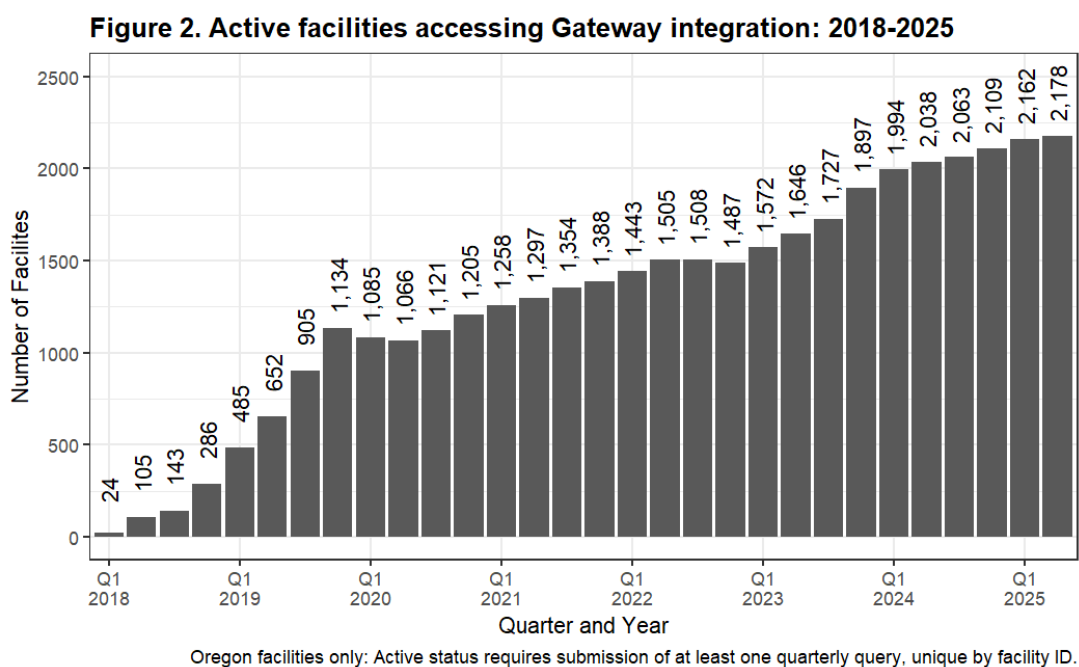
- Usage trends show an increased shift towards integrated use and a reduced use of the web portal.
- All provider groups increased integrated usage, especially NPs (+13.9%), RPh (+14.8%), and NDs (+19.0%).

Table 5. Top Prescriptions: Apr 1 - June 30, 2025.

Drug	Number of Rx	% of all Rx	% Change
All	1,875,379	100%	8.6%
Amphetamine	257,381	13.7%	10.0%
Gabapentin	234,187	12.5%	-1.1%
Oxycodone	232,937	12.4%	1.5%
Hydrocodone	190,630	10.2%	-5.8%
Methylphenidate	119,327	6.4%	11.2%
Lorazepam	80,358	4.3%	0.8%
Tramadol	71,033	3.8%	-3.4%
Testosterone	70,048	3.7%	11.6%
Pregabalin	61,762	3.3%	NA
Zolpidem	54,584	2.9%	-5.3%

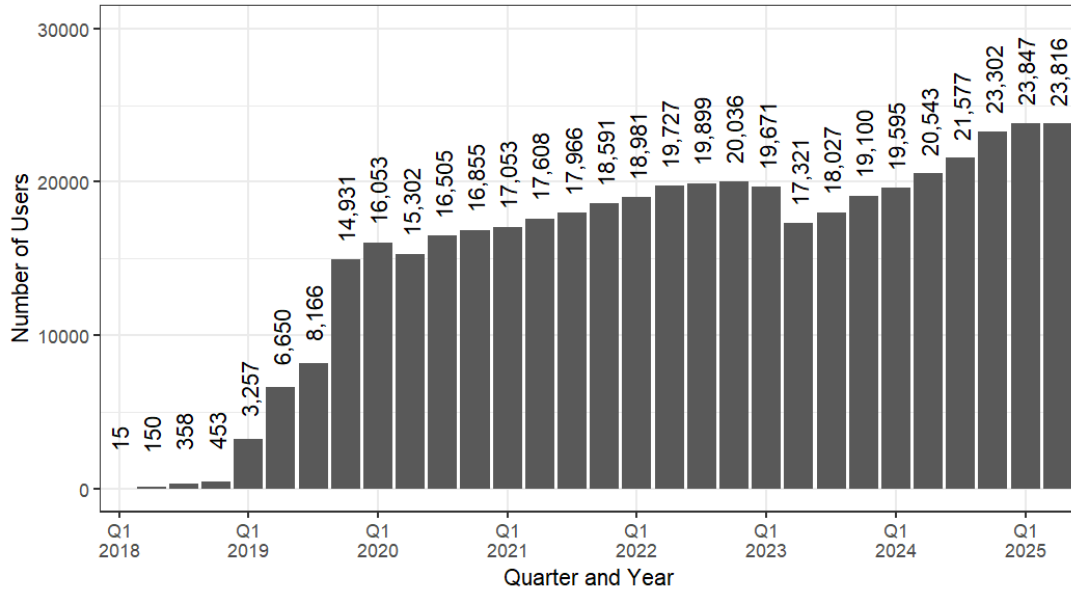
- Controlled substance prescribing increased 8.6% over the same quarter last year, largely driven by inclusion of schedule V and veterinarian-prescribed drugs as of 2025.
- Stimulant prescribing continues to increase. Amphetamine (+10%) remains the most prescribed drug and methylphenidate prescriptions also increased (+11.2%) over this time period.
- Gabapentin and hydrocodone prescriptions decreased (-1.1% and - 5.8%, respectively). Oxycodone prescriptions rose slightly (1.5%).
- Testosterone prescriptions rose 11.6% and account for 3.7% of all controlled substance prescriptions.
- Pregabalin entered the top 10 prescriptions and is a schedule V drug new to the PDMP in 2025.

To better understand the users and facilities accessing Gateway, *Figure 2* and *Figure 3* show usage over time.



- Active facilities grew slightly to 2,178 in Q2 2025.

Figure 3. Active users accessing Gateway integration: 2018-2025



Oregon users only: Active status requires submission of at least one quarterly query, unique by NPI or DEA number.

- 23,816 users submitting at least one query, consistent with prior quarters.

Contact: PDMP Research Analyst,
pdmp.research@odhsosha.oregon.gov