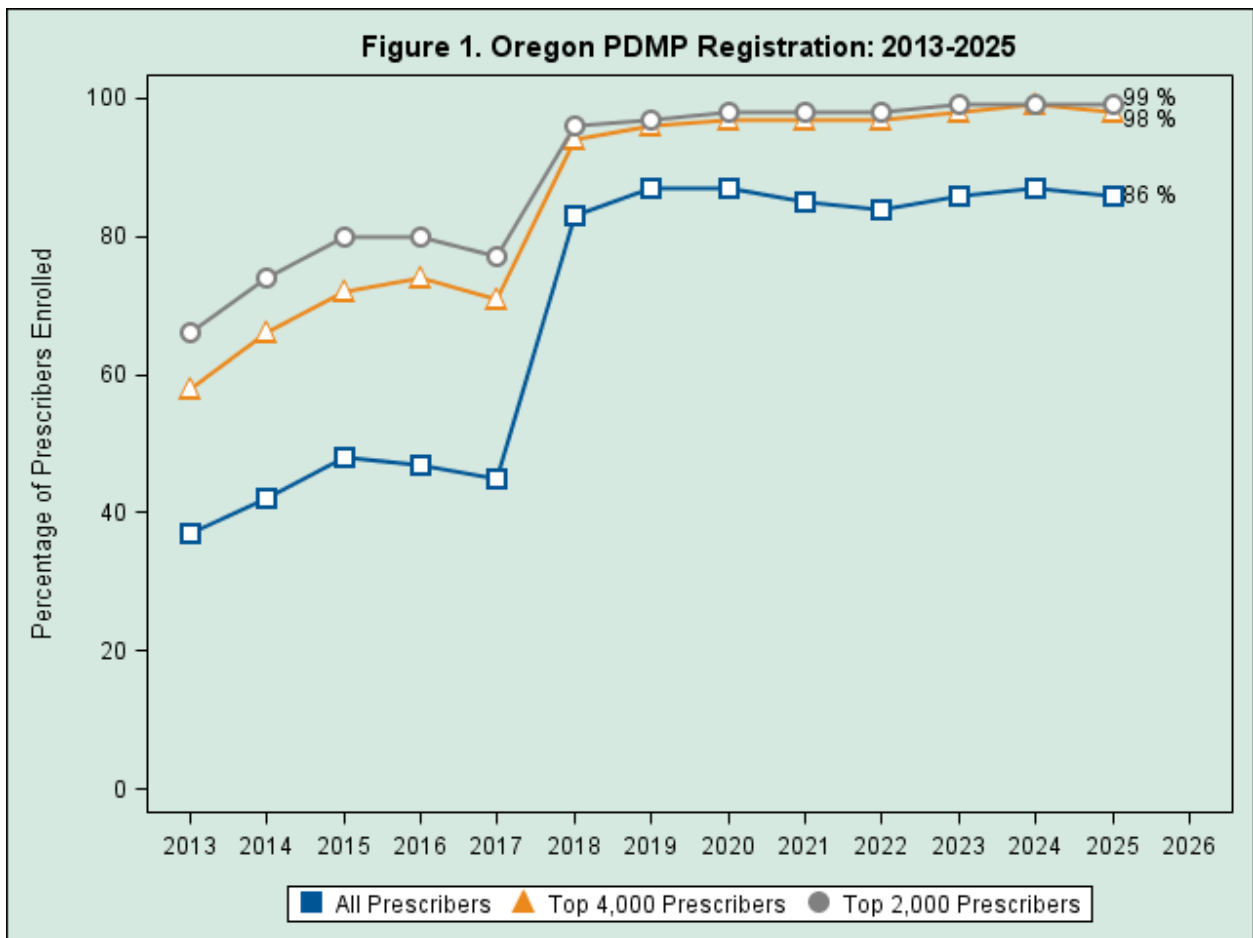


## 3rd Quarter 2025 Report (July 1 – Sept. 30, 2025)

Percent change evaluated relative to 3rd Quarter 2024

### Summary

- As of January 2025, the Oregon PDMP includes Schedule V drugs and veterinarian-prescribed drugs.
- Overall prescribers enrolled with the PDMP has remained consistent compared to the 3rd quarter of 2024 (Figure 1, Table 1).
- Gateway automated queries increased 17.3% and web queries increased 3.5% from the 3rd quarter of 2024. However, integrated report viewing declined (-19.9%) following a spike in activity in 2024. (Table 3).
- Total prescriptions rose 9.9%, largely due to the addition of Schedule V and veterinarian-prescribed drugs. (Table 5).
- Stimulant prescriptions continue to increase with amphetamine increasing 11.6%, making it the most prescribed drug in the PDMP. Methylphenidate prescriptions also increased (+12.3%).
- Pregabalin is new to the top 10 prescription list following Schedule V inclusion (Table 5).
- PDMP integrated gateway use remains stable with active facilities and active users increasing.



- *Figure 1* shows the number of prescribers enrolled in the PDMP over time from 2013-2025. Registration has been consistent since 2018.

*Table 1. Oregon Prescriber Enrollment and Use: July 1 - September 30, 2025.*

User Type	Prescribers <sup>1</sup>	Enrolled	Web Query	Automated Query	Total Query
All Prescribers (by DEA)	20,388	17,478 (85.7%)	1,117 (6.4%)	13,374 (76.5%)	13,459 (77.0%)
Top 4,000 Prescribers	4,000	3,914 (97.9%)	766 (19.6%)	3,525 (90.1%)	3,574 (91.3%)
Top 2,000 Prescribers	2,000	1,974 (98.7%)	490 (24.8%)	1,788 (90.6%)	1,814 (91.9%)

<sup>1</sup>Counts provided by unique DEA number. Providers may have multiple DEA numbers.

- Controlled substances were prescribed by 20,388 Oregon providers.

- During the 3rd quarter, 77.0% of enrolled prescribers, 91.3% of the top 4,000 prescribers, and 91.9% of the top 2,000 prescribers queried using the web portal and/or gateway integration.
- Query activity increased compared to last year (Q3 2024) when 75.1% of enrolled prescribers submitted queries.

*Table 2. Special Requests: July 1 - September 30, 2025.*

Measure	Count
Patient Records	10
Healthcare Boards	48
Law Enforcement	7
<b>Total Special Requests</b>	<b>65</b>

- 65 special requests were received and processed by PDMP staff.
- Healthcare boards were the most frequent originators of these requests.

*Table 3. PDMP Activity Summary Statistics: July 1 – September 30, 2025.*

User Type	Web Query	% Change <sup>1</sup>	Automated Query	% Change <sup>1</sup>	Report Viewed	% Change <sup>1</sup>
Healthcare providers	77,428	-2.8%	7,033,988	21.3%	855,397	-11.1%
Pharmacies	59,151	-4.9%	1,508,769	2.4%	796,691	-27.5%
Delegates	178,015	9.8%	NA	NA	NA	NA
<b>Total<sup>2</sup></b>	<b>314,732</b>	<b>3.5%</b>	<b>8,542,757</b>	<b>17.5%</b>	<b>1,652,088</b>	<b>-19.9%</b>

<sup>1</sup>Percent change evaluated relative to same time period during the prior year.

<sup>2</sup>Query data drawn from Appriss AWAxE web portal, PMPi Gateway audit file and EDIE supplementary audit file. Queries de-duplicated using last name, date of birth, prescriber ID, and date of query

- Web portal queries increased 3.5%, driven by delegate queries.
- Automated queries increased 17.5% while integrated report viewing decreased -19.9% compared to the spike in report activity in 2024.

*Table 4. Activity for PDMP-Enrolled Providers: July 1 - September 30, 2025.*

<b>Discipline</b>	<b>Total Accounts (by DEA)</b>	<b>% Change</b>	<b>Web Users</b>	<b>% Change</b>	<b>Integrated Users</b>	<b>% Change</b>
MD/PA/DO	21,207	-1.5%	1,323	-9.6%	16,505	6.8%
NP/CNS-PP	5,814	2.4%	1,233	5.7%	4,461	11.9%
RPh	3,661	2.1%	1,152	-9.6%	641	8.1%
Delegates	3,175	11.7%	1,832	5.1%	NA	NA
DDS/DMD	2,629	-3.8%	294	-1.3%	332	2.5%
ND	602	-8.1%	166	-2.9%	501	17.1%

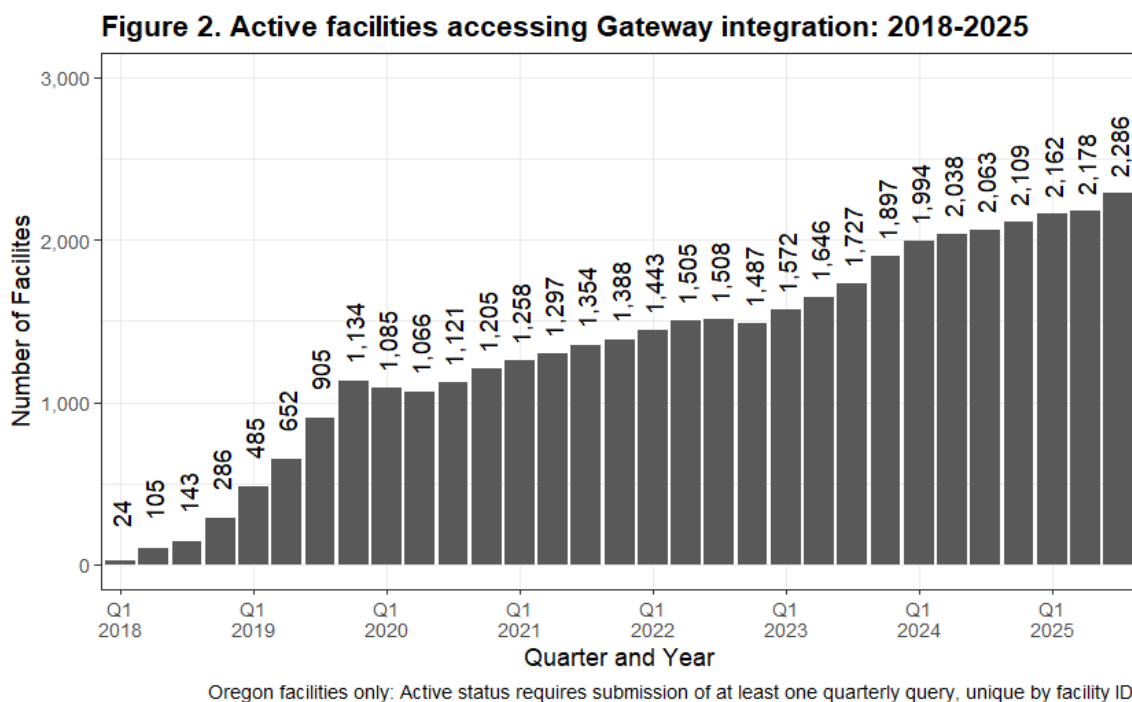
- Usage trends show an increased shift towards integrated use and a reduced use of the web portal.
- All provider groups increased integrated usage especially NP/CNS-PP (+11.9%) and ND (+17.1%) disciplines.

*Table 5. Top Prescriptions: July 1 - September 30, 2025.*

<b>Drug</b>	<b>Number of Rx</b>	<b>% of all Rx</b>	<b>% Change</b>
All	1,890,554	100%	9.9%
Amphetamine	259,587	13.7%	11.6%
Gabapentin	236,929	12.5%	0.0%
Oxycodone	232,219	12.3%	1.5%
Hydrocodone	184,455	9.8%	-6.8%
Methylphenidate	117,018	6.2%	12.3%
Lorazepam	80,976	4.3%	1.9%
Testosterone	74,013	3.9%	13.0%
Tramadol	71,481	3.8%	-1.5%
Pregabalin	63,752	3.4%	NA
Zolpidem	54,706	2.9%	-4.0%

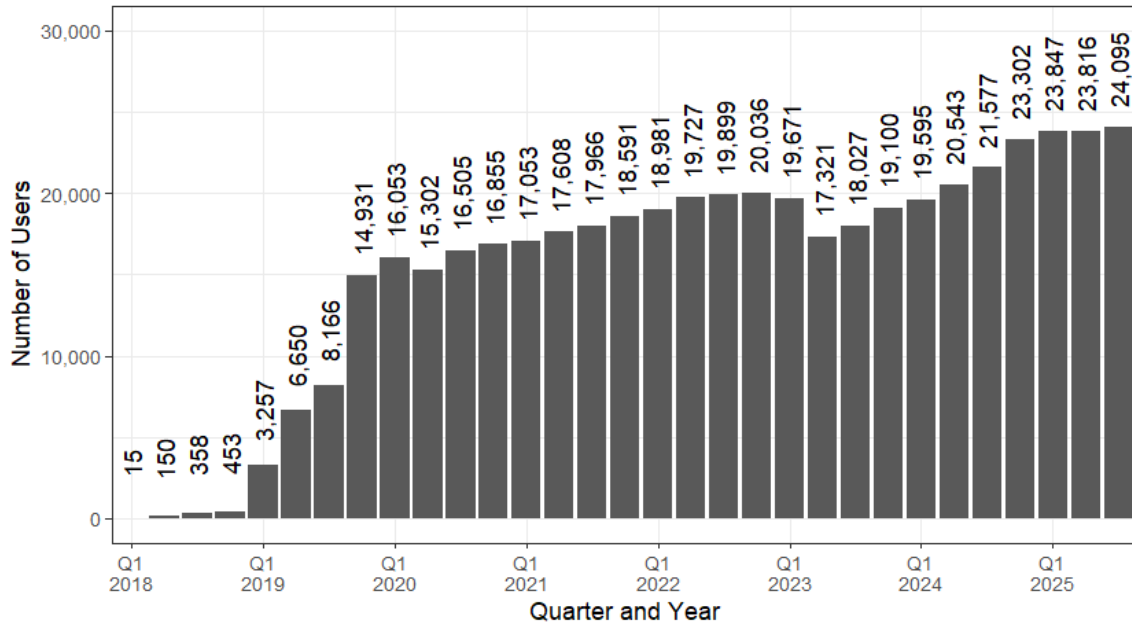
- Controlled substance prescribing increased 9.9%, largely driven by the inclusion of schedule V and veterinarian-prescribed drugs.
- Stimulant prescribing continues to increase. Amphetamine (+11.6%) remains the most prescribed drug and methylphenidate prescriptions increased 12.3%.
- Gabapentin prescriptions remained consistent with no change from last year. Hydrocodone prescriptions decreased (-6.8%) and oxycodone slightly increased (+1.5%).
- Testosterone increased 13% and pregabalin prescription entered the top 10. Pregabalin is a schedule V drug new to the PDMP in 2025.

To better understand the users and facilities accessing Gateway integration, Figure 2 and Figure 3 show usage over time.



- The number of facilities accessing Gateway increased to 2,286 facilities.

**Figure 3. Active users accessing Gateway integration: 2018-2025**



Oregon users only: Active status requires submission of at least one quarterly query, unique by NPI or DEA number.

- The number of users submitting at least one query increased slightly to 24,095 users.

---

**Contact: PDMP Research Analyst,**  
[pdmp.research@odhsosha.oregon.gov](mailto:pdmp.research@odhsosha.oregon.gov)

---