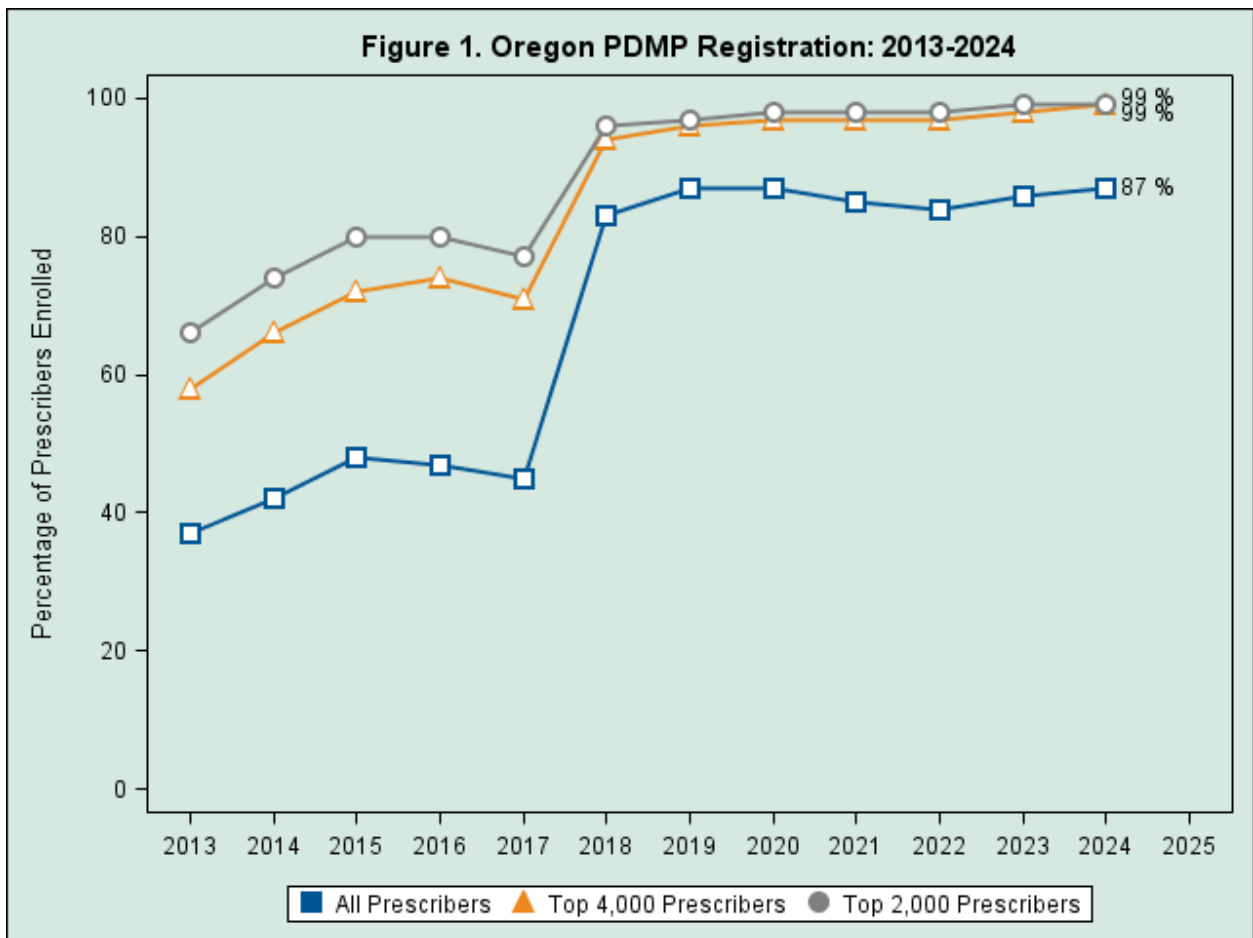


## 4th Quarter 2024 Report (Oct. 1 – Dec. 31)

Percent change evaluated relative to 4th Quarter 2023

### Summary

- The percentage of prescribers enrolled in the PDMP system has stayed consistent compared to the Q4 2023 (*Figure 1* and *Table 1*).
- Gateway integration usage increased for both automated queries (12.6%) and reports viewed (19.6%) with large usage increases by pharmacies (*Table 3*).
- Web portal queries have declined overall (-3.7%), with decreases in healthcare provider and pharmacy usage. However, delegate usage of the web portal remains consistent with 5.7% increase in queries (*Table 3*).
- Overall, the total number of prescriptions for controlled substances increased (5.4%). Amphetamine is most prescribed substance in the system with a 17.6% increase in prescriptions over the last year. Overall, stimulant prescriptions increased with methylphenidate increasing 15.9% (*Table 5*).
- Gabapentin is the second most prescribed substance in the system with a slight increase (+0.3%) in prescriptions over Q4 2023 (*Table 5*).
- Active facilities and active users accessing Gateway integration continue to increase in Oregon (*Figure 2* and *Figure 3*).



- *Figure 1* shows the number of prescribers enrolled in the PDMP over time from 2013-2024. Registration has remained consistent since 2018.

*Table 1. Oregon Prescriber Enrollment and Use: Oct. 1 – Dec. 31, 2024.*

User Type	Prescribers	Enrolled	Web Query	Automated Query	Total Query
All Prescribers (by DEA)	19,805	17,162 (86.7%)	1,187 (6.9%)	12,973 (75.6%)	13,083 (76.2%)
Top 4,000 Prescribers	4,000	3,939 (98.5%)	784 (19.9%)	3,491 (88.6%)	3,545 (90.0%)
Top 2,000 Prescribers	2,000	1,979 (99.0%)	506 (25.6%)	1,795 (90.7%)	1,821 (92.0%)

- Controlled substances were prescribed by 19,805 Oregon providers in the 4th quarter of 2024.
- At the close of the 4th quarter of 2024, 76.2% of enrolled prescribers, 90.0% of the top 4,000 prescribers, and 92.0% of the top 2,000 prescribers queried using the web portal and/or gateway integration.

- The percentage of enrolled prescribers who query the system (76.2%) has slightly decreased since the 4th quarter of 2023 when 83.0% of enrolled prescribers submitted queries.

*Table 2. Special Requests: Oct. 1 – Dec. 31, 2024.*

Measure	Count
Patient Records	9
Healthcare Boards	49
Law Enforcement	10
<b>Total Special Requests</b>	<b>68</b>

- 68 special requests were received and processed by PDMP staff.
- Healthcare boards were the most frequent originators of these requests.

*Table 3. PDMP Activity Summary Statistics: Oct. 1 – Dec. 31, 2024.*

User Type	Web Portal		Gateway Integration			
	Query <sup>1</sup>	% Change <sup>2</sup>	Automated Query <sup>1</sup>	% Change <sup>2</sup>	Reports Viewed <sup>1</sup>	% Change <sup>2</sup>
Healthcare providers	75,825	-8.1%	5,982,632	10.4%	848,557	-6.9%
Pharmacies	60,084	-18.5%	1,478,363	22.8%	1,028,906	56.3%
Delegates	165,736	5.7%	NA	NA	NA	NA
<b>Total<sup>2</sup></b>	<b>301,778</b>	<b>-3.7%</b>	<b>7,460,995</b>	<b>12.6%</b>	<b>1,877,463</b>	<b>19.6%</b>

<sup>1</sup>Query data drawn from Appriss AWAxE web portal, PMPi Gateway audit file and EDIE supplementary audit file. Queries de-duplicated using last name, date of birth, prescriber ID, and date of query.

<sup>2</sup>Percent change evaluated relative to same time during the prior year.

- Web portal queries have decreased overall (-3.7%) from the same quarter last year, except for delegates, with the largest increase seen in queries by pharmacies (-18.5%).

- The number of integrated automated queries and reports viewed have increased significantly over the last year, with large increases seen in pharmacy usage. These increases indicate that pharmacies are increasingly using the PDMP to check patient records.

*Table 4. Activity for PDMP-Enrolled Providers: Oct. 1 – Dec. 31, 2024.*

Discipline	Total Accounts (by DEA)	% Change <sup>1</sup>	Web Users	% Change <sup>1</sup>	Integrated Users	% Change <sup>1</sup>
MD/PA/DO	21,452	3.6%	1,437	-9.3%	16,073	7.7%
NP/CNS-PP	5,771	11.5%	1,191	6.1%	4,197	18.5%
RPh	3,697	3.0%	1,238	-8.0%	598	27.0%
Delegates	3,029	-11.8%	1,770	-3.0%	NA	NA
DDS/DMD	2,753	-2.2%	311	-18.1%	328	15.3%
ND	689	-3.5%	156	-3.0%	470	20.9%

<sup>1</sup>Percent change evaluated relative to same time during the prior year.

- *Table 4* represents usage for Oregon providers registered with the PDMP.
- Registration was mixed with MD/PA/DO, NP/CNS-PP and RPh accounts increasing while delegates, DDS/DMD, and ND accounts decreasing.
- In general, most disciplines are increasing usage of the integrated system and decreasing usage of the PDMP through the web portal.
- The NP/CNS-PP discipline increased PDMP usage for both the web portal (6.1%) and gateway integration (18.5%).

*Table 5. Top Prescriptions: Oct. 1 – Dec. 31, 2024.*

Drug	Number of Rx	% of all Rx	% Change <sup>1</sup>
All	1,763,850	100%	5.4%
Amphetamine	241,969	13.7%	17.6%
Gabapentin	236,654	13.4%	0.3%
Oxycodone	234,186	13.3%	3.5%
Hydrocodone	196,866	11.2%	-4.1%
Methylphenidate	111,971	6.3%	15.9%
Lorazepam	80,278	4.6%	0.7%
Tramadol	72,077	4.1%	-2.7%
Testosterone	67,745	3.8%	18.2%
Zolpidem	56,631	3.2%	-3.9%
Alprazolam	55,301	3.1%	-0.5%

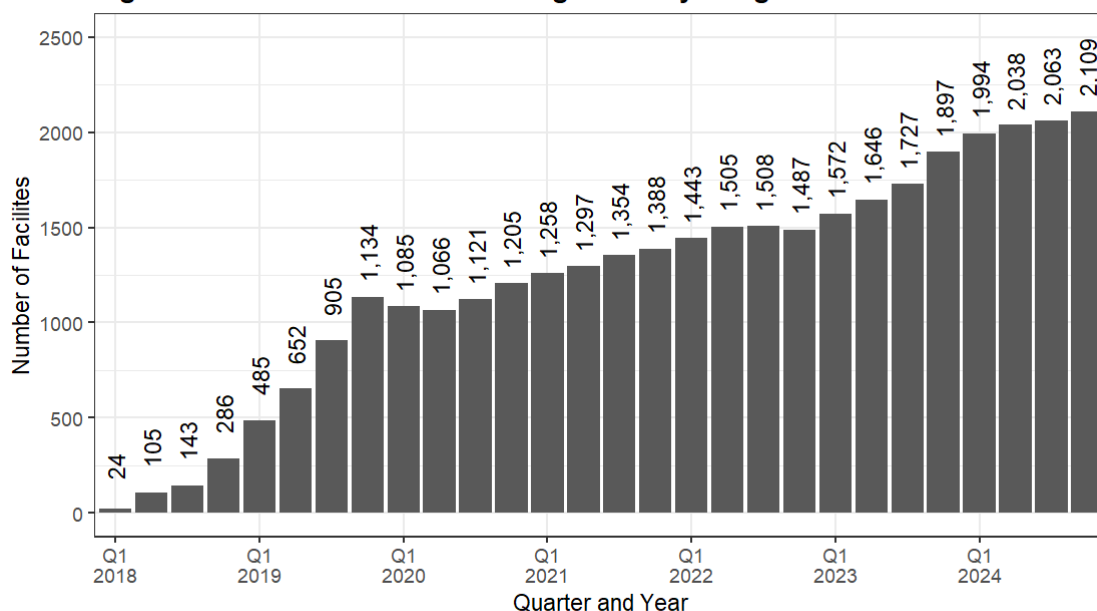
<sup>1</sup>Percent change evaluated relative to same time during the prior year.

- Controlled substance prescriptions have increased 5.4% over the same quarter last year.
- The top prescribed drug in the Oregon PDMP is amphetamine with a 17.6% increase in prescriptions over Q4 2023. The stimulant, methylphenidate, also increased (15.9%) over this time period.
- Gabapentin is the second most prescribed drug which stayed consistent over the year with a slight 0.3% increase. The addition of gabapentin as a PDMP-covered substance was effective as of January 1st, 2020.
- Prescriptions for commonly prescribed benzodiazepines were mixed with lorazepam increasing 0.7% and alprazolam decreasing (-0.5%). Testosterone prescriptions account for 3.8% of all controlled substance prescriptions and increased 18.2% over the last year.

To better understand the users and facilities accessing Gateway, *Figure 2* and *Figure 3* show usage over time.

- Active facilities steadily increased with 2,109 current active Oregon facilities in Q4 2024.

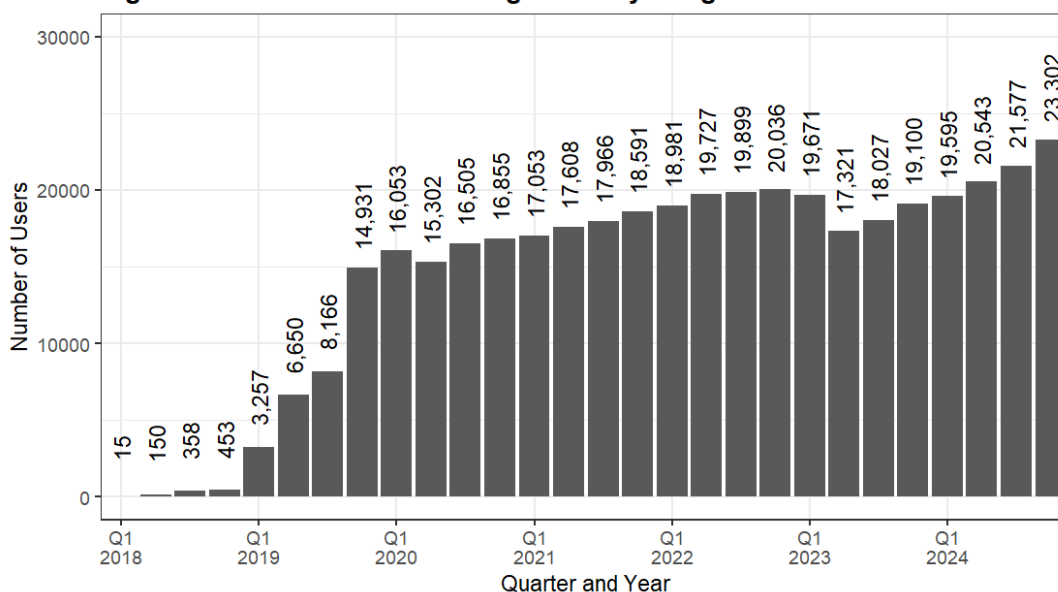
**Figure 2. Active facilities accessing Gateway integration: 2018-2024**



Oregon facilities only: Active status requires submission of at least one quarterly query, unique by facility ID.

- Active users slightly decreased in 2023 but has recovered in 2024 with 23,302 active users in Q4 2024.

**Figure 3. Active users accessing Gateway integration: 2018-2024**



Oregon users only: Active status requires submission of at least one quarterly query, unique by NPI or DEA number.

---

**Contact: PDMP Research Analyst, [pdmp.research@odhsoha.oregon.gov](mailto:pdmp.research@odhsoha.oregon.gov)**

---