

Improving Childhood Immunization Rates



Oregon Immunization Program
Sara Kiely & Albert Koroloff



What are we going to talk about today?

- Factors that impact your rates
- Running clinic immunization rates
- Assessing clinical practices
- Improving clinical practices



What factors impact immunization rates in your clinic?



Community level



- Public transportation infrastructure
- Non-emergency medical transport
- Lack of awareness in the community
- Recent disease outbreaks in the media or community



Clinic level



- Contacting no-shows
- Patient inability to take time off of work
- Staff knowledge of immunizations
- Vaccine hesitancy
- Performing all AAP well child exams
- Administering *all* doses due at every visit

What about your clinic?



Patient level



- Educational level
- Transportation issues
- Not being able to take time off of work
- Vaccine hesitancy



Running clinic rates in ALERT IIS



Assessing rates at the clinic level

ALERT IIS assessment reports include all active patients at your clinic

- Assessment Report
- AFIX Product
- Resources:

– <https://public.health.oregon.gov/PreventionWellness/VaccinesImmunization/ImmunizationProviderResources/Pages/AFIXResourceCCO.aspx>



Interpreting the assessment report: age specific benchmarks

Assess age specific immunization status retrospectively to identify trends in clinical practice

UTD Grid	DTaP	Hep B	Hib	MMR	Polio	Prevnar	Varicella
@ 3 months	1	1	1		1	1	
@ 5 months	2	2	2		2	2	
@ 7 months	3	2	2		2	3	
@ 9 months	3	2	2		2	3	
@ 12 months	3	2	2	1	2	3	1
@ 16 months	4	3	3		3	4	
@ 19 months	4	3	3		3	4	
@ 21 months	4	3	3		3	4	
@ 24 months	4	3	3		3	4	
@ 72 months	5	3	4	2	4	4	1

Age specific benchmark example

**Clinic A:**

What do you see?

Assessment of Patients Meeting Age Specific Benchmarks									
UTD Grid	DTap	Hep B	Hib	MMR	Polio	Prevnar	Varicella	Total Meeting Age Criteria	% Coverage
@ 3 months	590	641	587		590	590		673	86.3%
@ 5 months	515	596	509		515	516		673	73.6%
@ 7 months	460	619	569		572	572		673	68.2%
@ 9 months	508	621	590		590	591		673	75.3%
@ 12 months	539	622	601		602	603		673	79.8%
@ 16 months	368	573	551	507	557	559	498	673	53.3%
@ 19 months	441	582	566	540	570	568	534	673	64.9%
@ 21 months	458	584	567	544	573	570	538	673	66.9%
@ 24 months	481	586	572	551	575	574	547	673	70.6%

Age specific benchmark example

**Clinic B:**

What do you see?

Assessment of Patients Meeting Age Specific Benchmarks									
UTD Age	DTap	Hep B	Hib	MMR	Polio	Prevnar	Varicella	Total Meeting Age Criteria	% Coverage
3 Months	1142	1133	1104		1103	1107		1242	85.28
5 Months	1041	1065	1009		1011	1006		1242	77.14
7 Months	950	1111	1074		1079	1096		1242	72.64
9 Months	1027	1121	1103		1107	1123		1242	78.38
12 Months	1079	1126	1116		1117	1134		1242	82.04
16 Months	75	1074	225	977	1062	1039	932	1242	4.88
19 Months	705	1084	767	1023	1075	1071	983	1242	50.84
21 Months	811	1091	859	1039	1082	1083	999	1242	58.44
24 Months	907	1099	942	1078	1095	1097	1037	1242	66.28
72 Months	0	0	0	0	0	0	0	0	

Age specific benchmark example

**Clinic C:**

What do you see?

Assessment of Patients Meeting Age Specific Benchmarks									
UTD Age	DTap	Hep B	Hib	MMR	Polio	Prevnar	Varicella	Total Meeting Age Criteria	% Coverage
3 Months	84	45	84		28	66		217	10.14
5 Months	63	20	67		16	43		217	5.54
7 Months	45	22	81		19	59		217	6.54
9 Months	54	22	83		23	71		217	6.94
12 Months	62	22	86		26	78		217	6.94
16 Months	8	12	75	10	18	64	7	217	.54
19 Months	33	12	77	13	26	67	9	217	.94
21 Months	36	12	77	17	26	67	9	217	.94
24 Months	45	12	80	22	38	69	12	217	1.44
72 Months	0	0	0	0	0	0	0	0	

What other rates should you be aware of?



Child Immunization Rates
Immunization rates for two-year-olds in Oregon.



Adolescent Immunization Rates
Immunization rates for adolescents age 13 to 17.



Adult Immunization Rates
Oregon immunization rates for adults, including healthcare workers.



Seasonal Flu Vaccine Uptake
Snapshots of Oregon influenza vaccine uptake, updated weekly.



School Immunization Rates
Information for schools and child care facilities to meet data sharing requirements, and links to county immunization rates.

Questions about rates
ALERT IS Help Desk
971-673-0275
9:00am - 4:00pm

Information on clinic-specific rates
Alex Larsen
AFIX Coordinator
alex.larsen@state.or.us
971-673-0298

School Immunization data
Stacy de Assis Matthews
School Law Coordinator
stacy.d.matthews@state.or.us
971-673-0299

<https://public.health.oregon.gov/PreventionWellness/VaccinesImmunization/Pages/research.aspx>

Assessing clinical practices



Oregon Health Authority

Assessing clinical practices

- CDC AFIX site visit questionnaire: Best practice ideas for improvement.
- All interventions are evidence-based and supported by the Community Guide for Preventative Services.

Resources:

<https://public.health.oregon.gov/PreventionWellness/VaccinesImmunization/ImmunizationProviderResources/Pages/AFIXResource.aspx>

<http://www.thecommunityguide.org/vaccines/index.html>

Oregon Health Authority

Strategies to Improve the Quality of Immunization practice

- ☐ Do you have a reminder/recall process in place for pediatric/adolescent patients?
- ☐ Do you offer walk-in or immunization only visits?
- ☐ Do you contact patients/parents within 3-5 days when a "well-child" or "immunization only" visit is a "no show" and reschedule it for as soon as possible?
- ☐ Do you have a system in place to schedule wellness visits for patients at 11-12 years old?
- ☐ Do you schedule the next vaccine visits before the parent/patient leaves the office?



Strategies to Improve the Quality of Immunization practice

- ☐ Does your immunization staff educate parents about immunizations and the diseases they prevent, even when the parents refuse to immunize?
- ☐ Do you have immunization information resources to help answer questions from patients/parents?
- ☐ Do you train front desk/scheduling staff so they know when it's appropriate to schedule immunization appointments?
- ☐ Is your immunization staff knowledgeable and comfortable with administering all recommended vaccinations to patients at every visit?
- ☐ Do you regularly document vaccine refusals and the reason for the refusal?



Immunization Improvement: A Deeper Dive

Do you have a reminder/recall process in place for pediatric/adolescent patients?

ALERT IIS reminder recall

- Allows users to recall patients that need to come in for immunizations
- Recall at 13 months: ensure they don't fall behind
- Recall at 19 months: capture kids that haven't had all doses necessary in the second year of life
- Auto recall at 22 months

Resources:

- <http://public.health.oregon.gov/PreventionWellness/VaccinesImmunization/alert/Pages/Reports-Training.aspx>



ALERT IIS

Production Region 4.1.1

home | manage access/account | forms | related links | logout | help desk

organization CLINIC 2 - SHELBY'S TEST CLINIC • user Erin Corrigan • role ALERT System Administrator

Reminder/Recall Request

Create New List ...

☒ Enter new Reminder Recall Request Criteria List Name

☐ Use a previous Reminder Recall Request Criteria Please select an option

Select Patient Population ...

☒ Patients Associated with CLINIC 2 - SHELBY'S TEST CLINIC

☐ Patients Residing in Klamath County

☐ Patients Associated with CLINIC 2 - SHELBY'S TEST CLINIC or Residing in Klamath County

Indicate the Tracking Schedule ...

☒ Use Tracking Schedule Associated with Each Patient

☐ Use Tracking Schedule Selected for All Patients

Select the Vaccine Group To Report on ...

☒ Use All Vaccine Groups

☐ Use Vaccine Groups Selected

Adeno Anthrax Add Remove

☒ Vaccines Due Now

☐ Vaccines Past Due

☐ Both

Reminder Request Process Summary

Reminder Request Criteria Name: 13 MONTH CLOS

Step	Criteria Evaluated at this Step	Patients
1	Patients associated with ERIN'S TEST CLINIC	41
2	Patients immunized by ERIN'S TEST CLINIC	39
3	Patients that are active within ERIN'S TEST CLINIC and allow Reminder & Recall Contact	2
4	Additional criteria includes: • Patients born between 06/01/2012 and 06/08/2016. • School is not specified. • Provider is not specified.	1
5	Patients that have a Valid Address: Additional criteria includes: • City is not specified. • Zip Code is not specified.	1
6	Patients that meet the following criteria regarding vaccination status: • Patients that are Due Now or Past Due for one or more vaccinations as of 06/08/2017. • Use all vaccine groups. • Use ACP for all patients.	1
Total Number of Patients Eligible for Reminder		1

Reminder Request Output Options

Output	Description	Additional Input
Reminder Letter	Standard Reminder Letter	Duplex Printing <input type="checkbox"/> Report Name Free Text Phone #
Reminder Card	Standard Reminder Card (4x5)	Report Name Free Text Phone #
Mailing Labels	Avery 5160 Mailing Labels	Report Name
Patient Query Listing	A list of patients based on the report criteria	Report Name
Extract Client Data	Extract client data in XML format	Report Name

ALERT IIS Tip Sheets

Reminder/Recall Report

Report Purpose: Provides a list of patients that are due or overdue for a recommended vaccine. Reminder notices are created for patients that will soon be due for a particular immunization. Recall notices are created for patients that are currently overdue for a particular immunization. Used in combination with the Assessment and Benchmark reports, the third of three reports used to support immunization quality improvement work. *Note: For best results, use the Ad Hoc report before running the Reminder/Recall report to update your active patients in ALERT IIS. (See the tip sheet on managing your patient population using the Ad Hoc report.)*


Intended audience: Providers interested in improving their patient population immunization rates, clinics participating in the Vaccines for Children and ACP programs, CCOs and health system administrators wanting to meet performance measures by raising immunization coverage levels and reducing missed opportunities to vaccinate.

Who has access to the Report: ALERT IIS Standard and Super Users

Available instruction: (click on a link below to access instructions)

TipSheet (pdf)	Short, desktop reference with step-by-step instructions for running the report.
Video Recording	<ul style="list-style-type: none">Available on-demand.Total run time for the recording is 21 minutes. This recorded video provides instructions for running the ALERT IIS Reminder/Recall report.


<http://www.oregon.gov/oha/PH/PreventionWellness/VaccinesImmunization/ImmunizationProviderResources/Documents/ALERTIISReminderRecallGuide.pdf>



Immunization Improvement: A deeper dive

Do you schedule the next vaccine visits before the parent/patient leaves the office?

How about before they get the immunization?







Immunization Improvement: A deeper dive

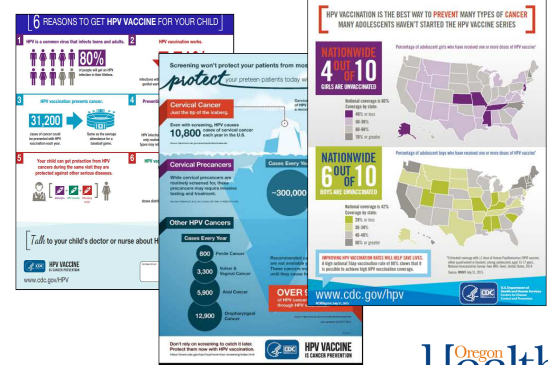
Do you have immunization information resources to help answer questions from patients/parents?




It's more than just VIS's

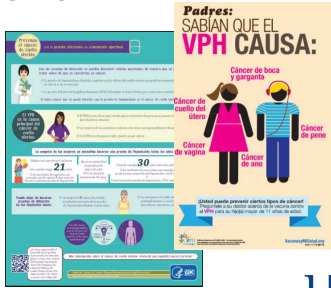








Resources in alternate languages?



Oregon Health Authority

What about you?

Any creative or unique ways of improving immunization rates at your clinic?

Oregon Health Authority

Oregon Health Authority

Thank you!

Sara Kiely & Albert Koroloff
VFC Help Desk: 971-673-4832
