
Maternal and Child Health

Cate Wilcox, MPH
Maternal and Child Health Manager
Title V Director



PUBLIC HEALTH DIVISION
Maternal and Child Health Section

Maternal and Child Health

Every child born has an opportunity to reach their full potential by experiencing a childhood that sets them on a **trajectory of life-long health and wellbeing.**

How the **public health system supports** healthy pregnancies and childhood can impact that trajectory.



Maternal and Child Health

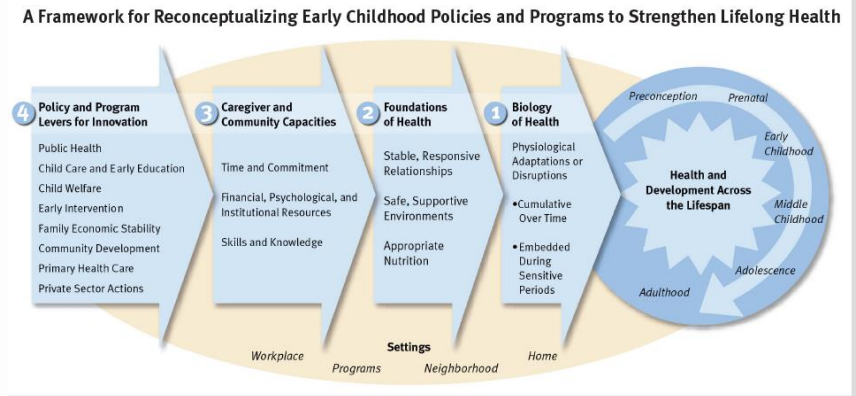
- The goal of the MCH Section is that every mother, child and family has the best opportunity to reach their **greatest potential life-long health and well-being**.
- Leading with an anti-racism, health equity lens, our work addresses both **universal and targeted approaches** that **promote protective factors and resilience** in the early years for life-long health.



MCH and Public Health Modernization

- Foundational Capabilities:
 - Policy and Systems
 - Workforce Capacity and Effectiveness
 - Community and Family Capacity
 - Surveillance, Assessment, Evaluation and Epidemiology

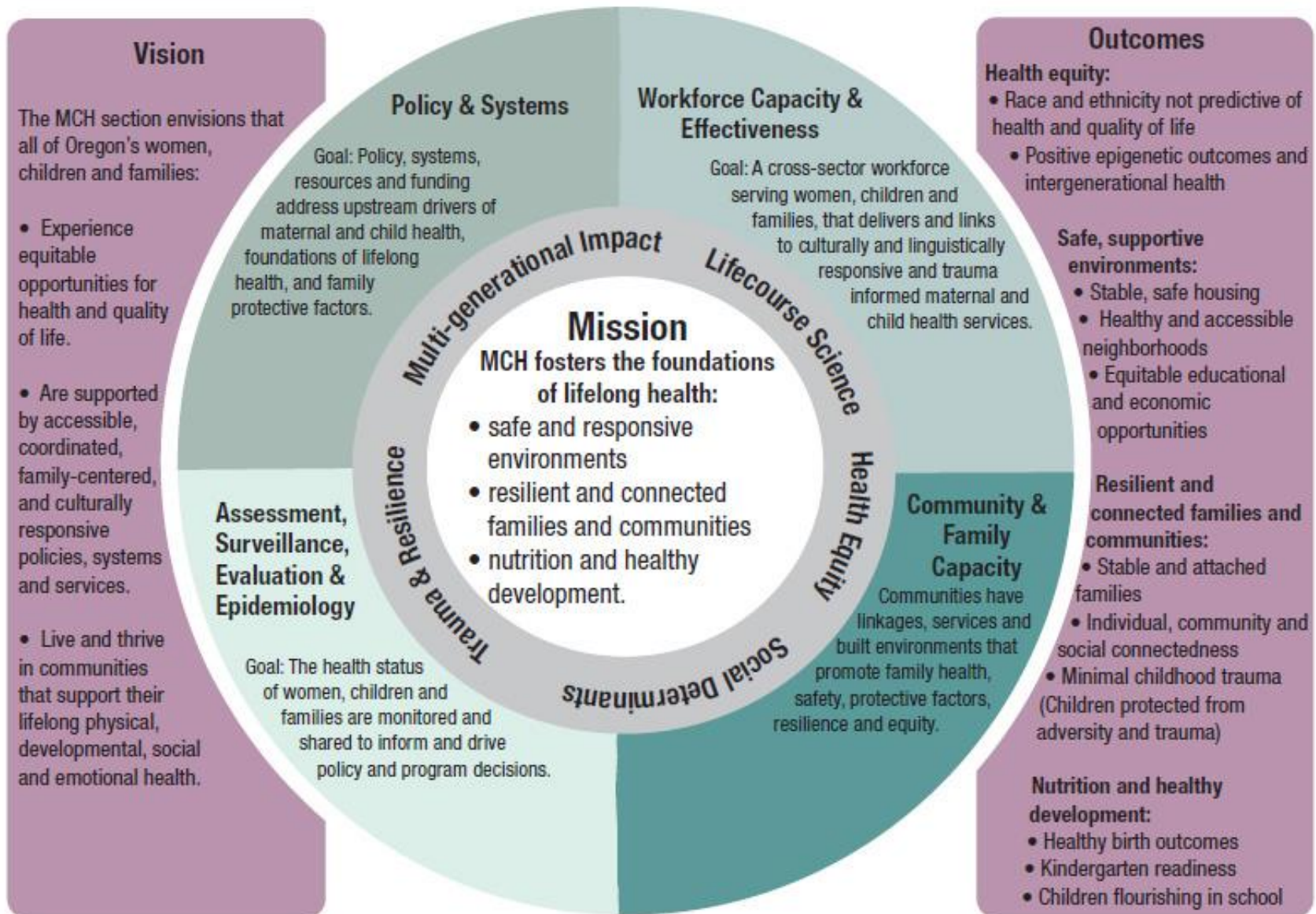
- Foundational Program Outcomes:
 - Safe, Responsive Environments
 - Resilient and Connected Families and Communities
 - Nutrition and Healthy Development



InBrief: The Foundations of Lifelong Health. Center on the Developing Child; Harvard University;
<http://developingchild.harvard.edu/science/deep-dives/lifelong-health/>

PHD Maternal and Child Health Section 2018 Strategic Plan:

Setting the trajectory for our population's future health



Policy and Systems

- Social determinants of health and equity and population conditions for health (economic security and opportunities, food/nutrition, equity/Culturally and Linguistically Appropriate Services (CLAS), trauma/ Adverse Childhood Experiences (ACEs))
- Targeted life course policy (infant and maternal mortality reduction, violence and injury prevention, preconception health, childcare, maternal mental health)
- Systems alignment and integration (early childhood, trauma informed care, childcare, family violence prevention, oral health)

Workforce Capacity and Effectiveness

- Advancing the skills and abilities (home visiting core competencies, Infant Mental Health-Endorsement, trauma-informed practices)
- Recruit and retain a diverse, stable and representative workforce (healthcare, mental health, public health, traditional health workers, childcare providers, and our MCH Section)
- Support innovative workforce models and practices (Dental Pilot Projects, reflective supervision)
- Advance the foundational capabilities (data analysis, policy development, communications)

Community and Family Capacity

- Screening and referrals to services (Oregon MothersCare, EHDI, home visiting, family violence prevention, pregnancy intention)
- Program guidance, training and technical assistance for LPHA, Tribes, and partners (Title V, MIECHV, oral health, home visiting)
- Assurance (Dental Sealant Program, Title V, home visiting)
- Partnerships (injury prevention, alcohol and other drug prevention, nutrition, medical and dental homes, early childhood systems)

Surveillance, Assessment, Evaluation and Epidemiology

- **Public Health Surveillance** (Birth Anomalies Surveillance System (BASS), Early Hearing Detection and Intervention (EHDI), Oregon Oral Health Surveillance System)
- **Surveys** (PRAMS, ECHO, Smile, Healthy Growth, BRFSS Oral Health/ACES)
- **Needs Assessments** (Title V, MIECHV)
- **Program CQI and Evaluation** (MIECHV, Tracking Home visiting Effectiveness in Oregon (THEO), Rape Prevention and Education)
- **Data and Informatics**



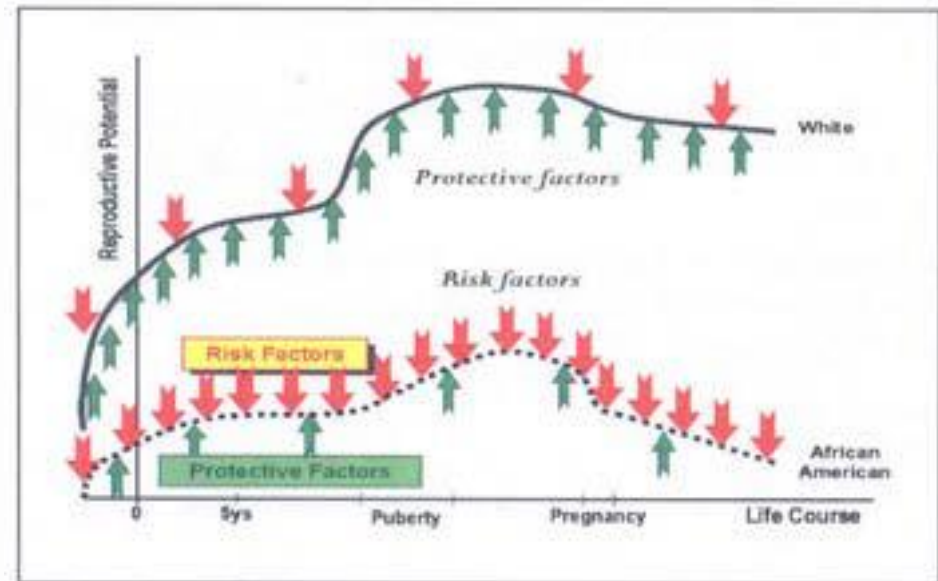
MCH Section Strategic Plan Outcomes

Short-Term Outcomes	Intermediate Outcomes	Long-term Outcomes
<p>Women</p> <ul style="list-style-type: none"> - Increased well woman visits - Increased adequate prenatal care - Decreased prenatal substance use - Decreased prenatal smoking - Improved prenatal oral health - Increased access to mental health services <p>Children</p> <ul style="list-style-type: none"> - Increased safe sleep for infants - Increased well child/adolescent visits, including immunizations - Increased child oral health visits - Increased child physical activity - Decreased children's exposure to smoking <p>Families</p> <ul style="list-style-type: none"> - Decreased intimate partner violence - Increased breastfeeding - Improved knowledge/skills in parenting & child development - Decreased food insecurity - Accessible healthy food <p>Accessible and connected services and systems of care</p> <ul style="list-style-type: none"> - Increased access to paid family leave - Increased access to healthy and affordable child care - Increased receipt of needed child development supports 	<ul style="list-style-type: none"> - Increased pregnancy intention - Improved maternal social support - Decreased stressful life events - Decreased perinatal depression - Improved preconception and prenatal health - Healthy weight across the lifespan - Improved family nutrition - On-track early childhood development - Reduced family violence and child abuse - Increased neighborhood safety - Safe home environment - Increased parent-child attachment - Increased parent capabilities - Increased economic stability - Effective safety net of services for families - Improved oral health across the lifespan 	<p>Health equity:</p> <ul style="list-style-type: none"> - Race and ethnicity not predictive of health and quality of life - Positive epigenetic outcomes and intergenerational health <p>Safe, supportive environments:</p> <ul style="list-style-type: none"> - Stable, safe housing - Healthy and accessible neighborhoods - Equitable educational and economic opportunities. <p>Resilient and connected families and communities:</p> <ul style="list-style-type: none"> - Stable and attached families - Individual, community and social connectedness - Minimal childhood trauma (Adverse Childhood Experiences) <p>Nutrition and healthy development:</p> <ul style="list-style-type: none"> - Healthy birth outcomes - Kindergarten readiness - Children flourishing in school

Title V MCH Block Grant:

\$6.1 mill annually, ~1/3 to LPHA/Tribes

- Maternal and Women's Health
- Perinatal and Infant Health
- Child Health
- Adolescent Health
- Children and Youth with Special Health Needs
- Toxic stress/Trauma/ACE
- Social Determinants of Health and Equity
- Culturally/Linguistically responsive services



Home Visiting

- Public Health Nurse Home Visiting (\$1.2 mill/biennium GF--\$1 mill to LPHA)
 - Babies First!
 - Nurse Family Partnership
- Universally offered Home Visiting (\$7.7 mill/biennium GF)
 - Universal access to nurse home visiting for all Oregon newborns and their families
- Maternal, Infant and Early Childhood Home Visiting (MIECHV) (\$8.4 mill annually—75% to local implementing agencies for services)
 - Services
 - Systems



dreamstime.com

Oral Health

- School-based Programs -- Dental sealants, Dental sealant program certification
- Workforce -- Dental Pilot Program,
- Statewide Oral Health Strategic Plan
 - Dr. Kaz Rafia, OHA Dental Director
- Title V
- Surveillance--Smile Survey, OH Surveillance System



Additional Programs Critical to our Populations

- Early Hearing Detection and Intervention (EHDI)
- Rape Prevention and Education (RPE)
- Maternal Mortality and Morbidity Review Committee (MMRC)



Collaborations and Partnerships....

- Local Public Health
- Tribes
- Coordinated Care Organizations
- Early Learning Hubs
- State Agencies
- Community-based Organizations
- Non-Profits
- Universities
- National Organizations

Budget: Biennium

Total = approximately \$45 million

- Federal funds: \$33 million
- State GF: \$12 million

Questions?

Cate Wilcox, MPH

MCH Section Manager

cate.s.wilcox@state.or.us

971-673-0299

