

# COVID-19 Biweekly Report

Oregon's Biweekly Data Report



## Biweekly Data Report - September 8, 2022

### Table of Contents

August 21-September 3 COVID-19 Summary.....	2
Where are we now?.....	3
Background.....	5
Demographics.....	5
Geography.....	5
Sex.....	8
Age.....	10
Race.....	15
Ethnicity.....	19
People with Intellectual and Developmental Disabilities.....	21
Weekly COVID-19 Hospitalizations (HOSCAP).....	22
ZIP code.....	22
Report Limitations.....	22
Additional Information & Available Resources.....	23

# COVID-19 Biweekly Report

Oregon's Biweekly Data Report



## August 21-September 3 COVID-19 Summary

- There were 8,592 reported cases in the last two weeks, down 25.9% from 11,597 cases in the previous two-week period.<sup>1</sup>
- Test positivity was 8.6% in the last two weeks, down from 10.8% in the previous two-week period.
- In the last two weeks, the statewide reported case rate was 201.4 per 100,000, and reported case rates were highest among the following age groups:
  - 399 cases per 100,000 (719 total cases) age 80+
  - 275 cases per 100,000 (1,017 total cases) age 70-79
  - 219 cases per 100,000 (1,149 total cases) age 60-69
- 847 cases (9.9% of all cases in the last two weeks; 98 cases per 100,000) were children 17 years or younger.
- 2,328 cases (27.1% of all cases in the last two weeks; 288 cases per 100,000) were people 65 years or older.
- To date, Oregon has seen:
  - 880,861 cases
  - 35,202 hospitalizations (4.0% of all reported cases)
  - 8,441 deaths (1.0% of all reported cases)

**Table 1. Recent COVID-19 cases, hospitalizations, and deaths**

	Counts (July 24-August 6)	Counts (August 7-August 20)	Counts (August 21-September 3)
Cases	15,678	11,597	8,592
Hospitalizations	597	480	309
Deaths	89	71	32

<sup>1</sup> Oregon Health Authority (OHA) continuously updates information on COVID-19 cases as new information becomes available. This may lead to slight variations in case counts compared to previous reports.

# COVID-19 Biweekly Report

Oregon's Biweekly Data Report



1. Cases are counted using the date that the case was reported to public health. Hospitalizations are counted using date of hospital admission. Deaths are counted using date of death. Due to delays in case ascertainment, these data are subject to change.
2. Hospitalizations and deaths from the most recent time period may not yet be reported.

## Where are we now?

The Omicron BA.5 variant continues to predominate in Oregon and nationally, but its transmission continues to decline. Test positivity has fallen from 15.1% six weeks ago to 8.6% in the most recent two-week period. The numbers of COVID-19-positive patients in hospital and in intensive care rose steadily from mid-April to a summertime high of 464 in mid-July, straining Oregon's hospitals and health care workers; the figure has since receded to 269 on September 7, but overall hospital capacity remains strained, with bed availability <10% statewide and persistently limited ability to discharge patients who require long-term care. Reported COVID-19-associated deaths have also declined over the last six weeks, due at least in part to the lag between when the person died and when their death is reported to public health. As school begins, fall weather means people spending more time indoors, and the influenza season draws near. Individuals are encouraged to consider getting vaccinated against the flu and boosted with a newly authorized bivalent COVID-19 vaccine.

Data on reported COVID-19 cases, hospitalizations, and deaths in Oregon are updated daily at:

<https://public.tableau.com/app/profile/oregon.health.authority.covid.19/viz/OregonCOVID-19Update/DailyDataUpdate>.

In the September 1 Centers for Disease Control and Prevention (CDC) COVID-19 Community Levels update, one Oregon county was in the "high" level: Malheur ([www.cdc.gov/coronavirus/2019-ncov/your-health/covid-by-county.html](http://www.cdc.gov/coronavirus/2019-ncov/your-health/covid-by-county.html)). Seven Oregon counties –Coos, Curry, Grant, Klamath, Lake, Morrow, Umatilla were in the "medium" COVID-19 Community Level. The remaining Oregon counties were in the "low" COVID-19 Community Level.

Recommendations for Oregon residents based on their county COVID-19 Community Level can be found at: [www.cdc.gov/coronavirus/2019-ncov/your-health/covid-by-county.html](http://www.cdc.gov/coronavirus/2019-ncov/your-health/covid-by-county.html).

# COVID-19 Biweekly Report

Oregon's Biweekly Data Report



You can learn more about how to use COVID-19 data in making personal decisions and risk assessments here: <https://covidblog.oregon.gov/how-to-use-regional-covid-19-data-to-make-decisions-about-day-to-day-life>.

# COVID-19 Biweekly Report

Oregon's Biweekly Data Report



## Biweekly Data Report

### Background

The COVID-19 Biweekly Report includes data from the most recent two weeks, and it will be published every two weeks. Please note that the data reported here are continually updated. For information updated daily, visit the OHA COVID-19 web page: <https://govstatus.egov.com/OR-OHA-COVID-19>.

### Demographics

The following tables and figures show the demographic characteristics for all reported COVID-19 cases in the last 6 months.<sup>2</sup> The tables show case counts, case rates, and indicators of severity by sex, age, race, and ethnicity. The figures show cases over time, by week of onset, for sex, age, race, and ethnicity.

### Geography

The following figures show case rates by county during August 21 - September 3, 2022. Cases are counted according to the date on which the case became known to public health. Figure 1 displays case rates by county, in comparison to the case rate for all of Oregon and the United States. Figure 2 uses a map to represent county-level case rate data.

---

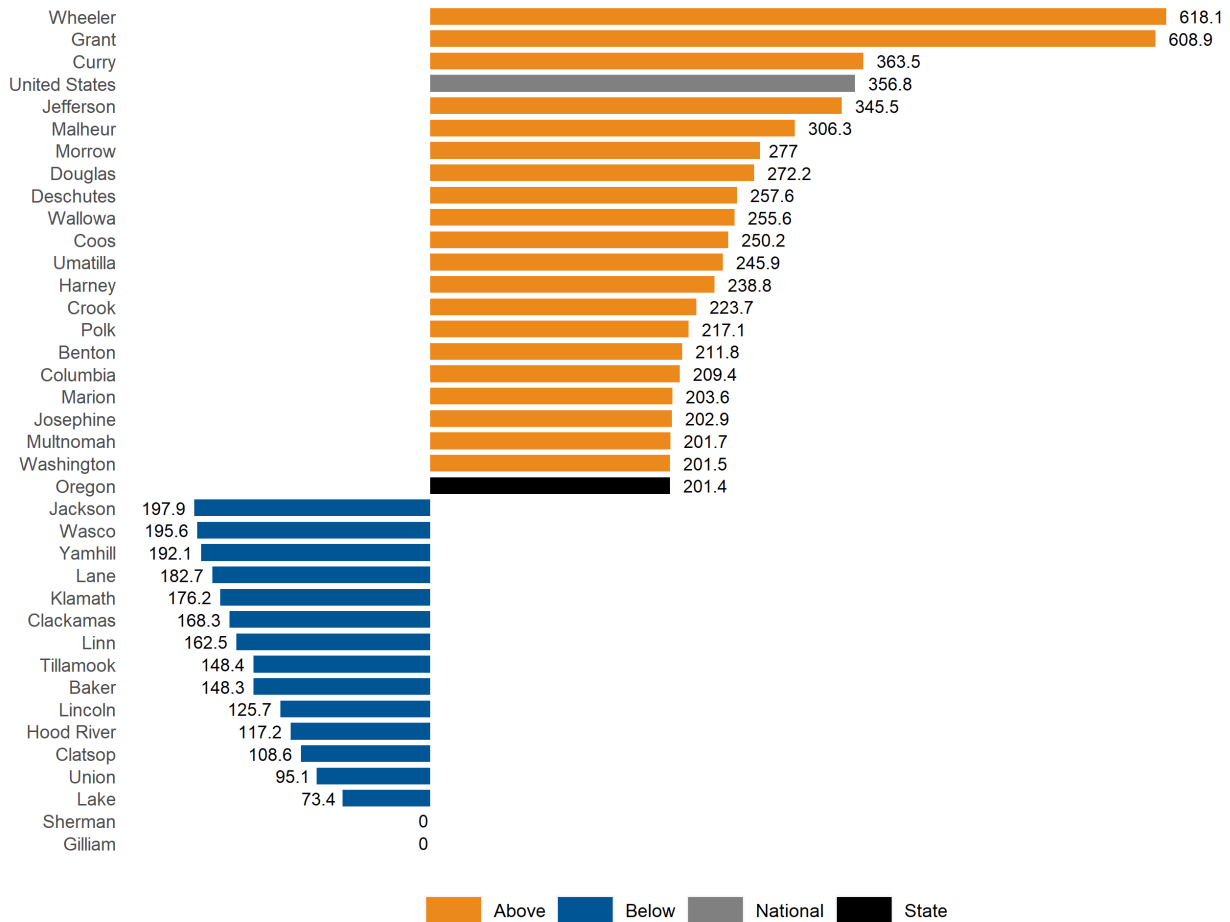
<sup>2</sup> All tables and figures in this report referencing the last 6 months include data from March 6, 2022, to September 3, 2022.

# COVID-19 Biweekly Report

Oregon's Biweekly Data Report



**Figure 1. Case rates per 100,000 residents by county compared to state and U.S., August 21 - September 3, 2022**



1. Counties that had case rates above the case rate for the state are displayed in orange. Counties that had case rates below the case rate for the state are displayed in blue.
2. Counties that had zero cases in the time period displayed appear on the list, but do not have a bar to display.
3. United States rates are calculated using data from the CDC COVID-19 Data Tracker. These data are available at [https://covid.cdc.gov/covid-data-tracker/#trends\\_dailycases](https://covid.cdc.gov/covid-data-tracker/#trends_dailycases).

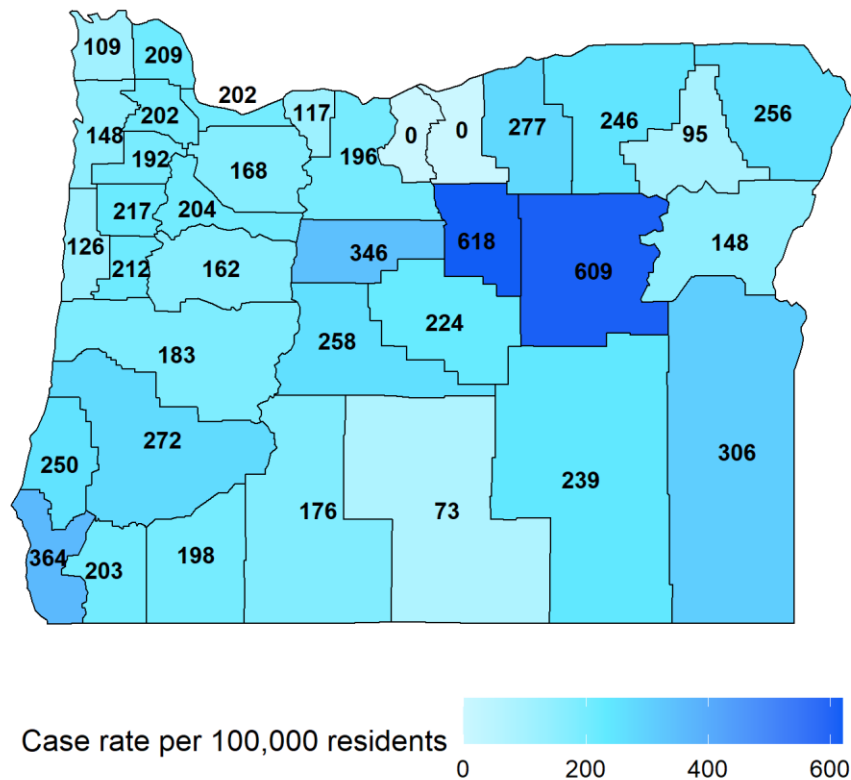
# COVID-19 Biweekly Report

Oregon's Biweekly Data Report



- Additional data are available at <https://public.tableau.com/app/profile/oregon.health.authority.covid.19/viz/Oregon-COVID-19TestingandOutcomesbyCounty/OregonsCOVID-19TestingandOutcomesbyCounty>.

Figure 2. Map of case rate per 100,000 residents by county, August 21 - September 3, 2022



# COVID-19 Biweekly Report

Oregon's Biweekly Data Report



## Sex

**Table 2a. Severity and rates of COVID-19 by sex, August 21 - September 3, 2022<sup>3</sup>**

Sex	Cases	% of total cases	Cases per 100,000	Hospitalized	% Hospitalized	Deaths
Female	4,468	52.0	207.7	151	3.4	20
Male	3,528	41.1	166.8	151	4.3	12
Non-Binary	9	0.1	0.0	0	0.0	0
Not Available	587	6.8	0.0	7	1.2	0
Total	8,592	100.0	201.4	309	3.6	32

**Table 2b. Severity and rates of COVID-19 by sex in the last 6 months**

Sex	Cases	% of total cases	Cases per 100,000	Hospitalized	% Hospitalized	Deaths	Case fatality
Female	97,513	53.0	4,532.2	2,756	2.8	440	0.5
Male	76,242	41.5	3,604.7	2,722	3.6	482	0.6
Non-Binary	142	0.1	0.0	0	0.0	0	0.0
Not Available	9,972	5.4	0.0	61	0.6	26	0.3
Total	183,869	100.0	4,309.5	5,539	3.0	948	0.5

1. Rates are calculated using population estimates from the 2021 Annual Population Report from Portland State University's College of Urban & Public Affairs Population Research Center and 2020 housing and demographic data from the U.S. Census Bureau's American Community Survey (ACS).

<sup>3</sup> There may be a lag of several weeks between when an individual dies and when their death appears in this report. Death counts are calculated using date of death.



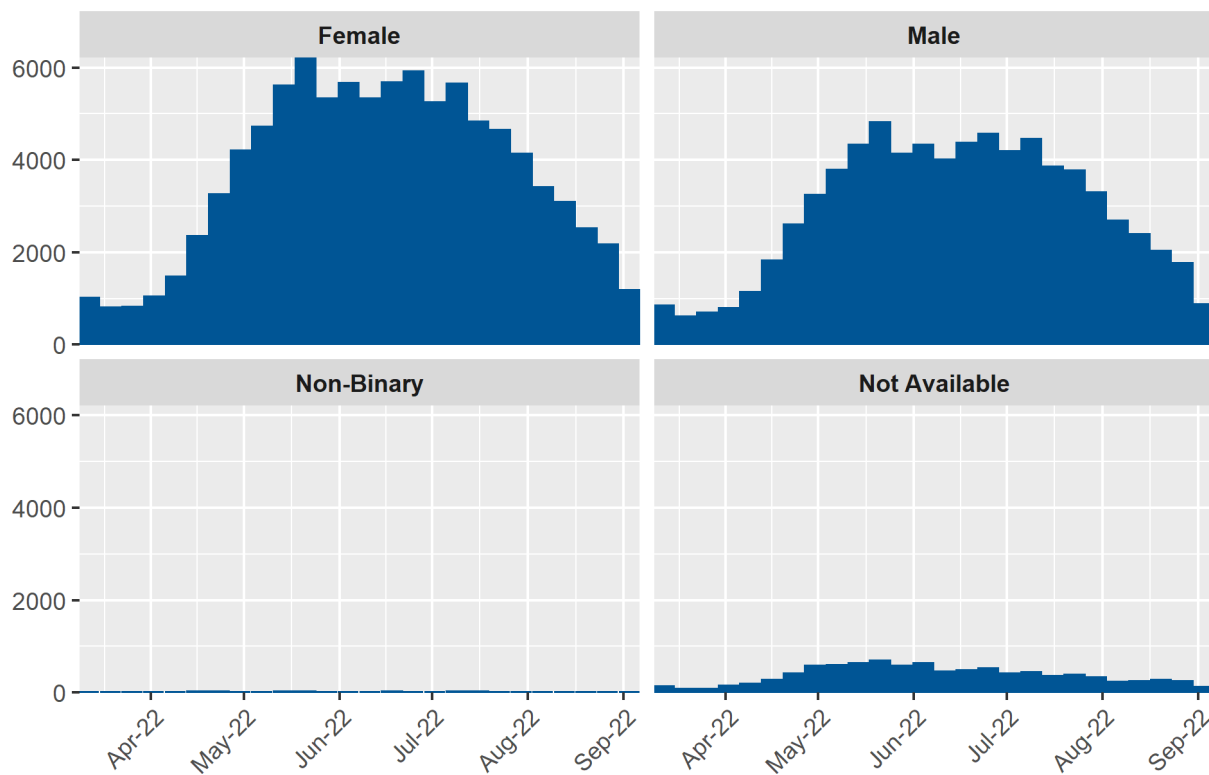
# COVID-19 Biweekly Report

Oregon's Biweekly Data Report



- Additional data are available at <https://public.tableau.com/app/profile/oregon.health.authority.covid.19/viz/OregonCOVID-19CaseDemographicsandDiseaseSeverityStatewide/DemographicDataHosp>.

**Figure 3. COVID-19 cases (counts) in the last 6 months by sex and week of onset**



In this paneled bar graph, COVID-19 case counts by sex are displayed over the past six months. Each panel corresponds with a different sex. The peaks and dips in case counts across sex generally align throughout the past six months. More detailed information on case counts and rates by sex are available at:

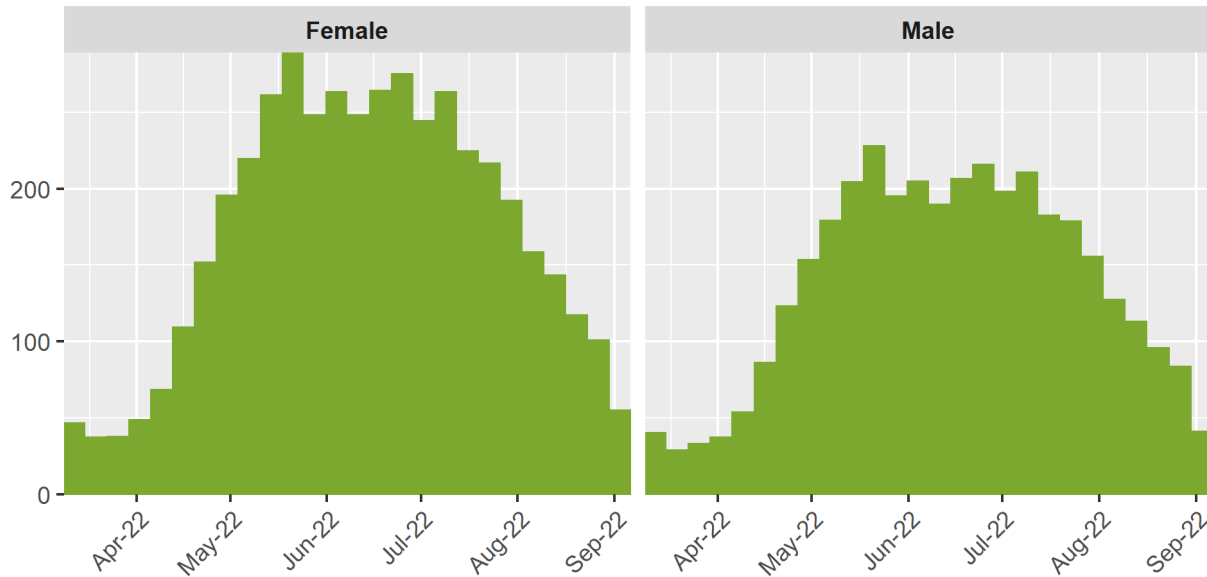
<https://public.tableau.com/app/profile/oregon.health.authority.covid.19/viz/OregonCOVID-19CaseDemographicsandDiseaseSeverityStatewide/DemographicDataHosp>.

# COVID-19 Biweekly Report

Oregon's Biweekly Data Report



**Figure 4. COVID-19 cases (case rate per 100,000) in the last 6 months by sex and week of onset**



In this paneled bar graph, COVID-19 case rates per 100,000 by sex are displayed over the past six months. Each panel corresponds with a different sex. The peaks and dips in case rates across sex generally align throughout the past six months. More detailed information on case counts and rates by sex are available at:

<https://public.tableau.com/app/profile/oregon.health.authority.covid.19/viz/OregonCOVID-19CaseDemographicsandDiseaseSeverityStatewide/DemographicDataHosp>.

## Age

**Table 3a. Severity and rates of COVID-19 by age, August 21 - September 3, 2022**

Age group	Cases	% of total cases	Cases per 100,000	Hospitalized	% Hospitalized	Deaths
0-9	544	6.3	116.7	2	0.4	0
10-19	454	5.3	92.2	6	1.3	0
20-29	1,127	13.1	200.5	8	0.7	0

# COVID-19 Biweekly Report

Oregon's Biweekly Data Report



Age group	Cases	% of total cases	Cases per 100,000	Hospitalized	% Hospitalized	Deaths
30-39	1,270	14.8	208.5	20	1.6	1
40-49	1,102	12.8	201.5	20	1.8	1
50-59	1,034	12.0	201.2	36	3.5	2
60-69	1,149	13.4	218.6	58	5.0	2
70-79	1,017	11.8	274.6	69	6.8	5
80+	719	8.4	399.2	88	12.2	21
Not Available	176	2.0	0.0	2	1.1	0
Total	8,592	100.0	201.4	309	3.6	32

**Table 3b. Severity and rates of COVID-19 by age in the last 6 months**

Age group	Cases	% of total cases	Cases per 100,000	Hospitalized	% Hospitalized	Deaths	Case fatality
0-9	14,643	8.0	3,141.6	118	0.8	2	0.0
10-19	14,308	7.8	2,906.2	90	0.6	0	0.0
20-29	27,474	14.9	4,887.2	343	1.2	7	0.0
30-39	30,083	16.4	4,939.0	412	1.4	4	0.0
40-49	25,379	13.8	4,640.8	381	1.5	27	0.1
50-59	22,633	12.3	4,404.0	578	2.6	65	0.3
60-69	20,794	11.3	3,955.5	928	4.5	115	0.6
70-79	16,994	9.2	4,588.8	1,217	7.2	209	1.2
80+	10,635	5.8	5,904.3	1,469	13.8	519	4.9
Not Available	926	0.5	0.0	3	0.3	0	0.0
Total	183,869	100.0	4,309.5	5,539	3.0	948	0.5

# COVID-19 Biweekly Report

Oregon's Biweekly Data Report



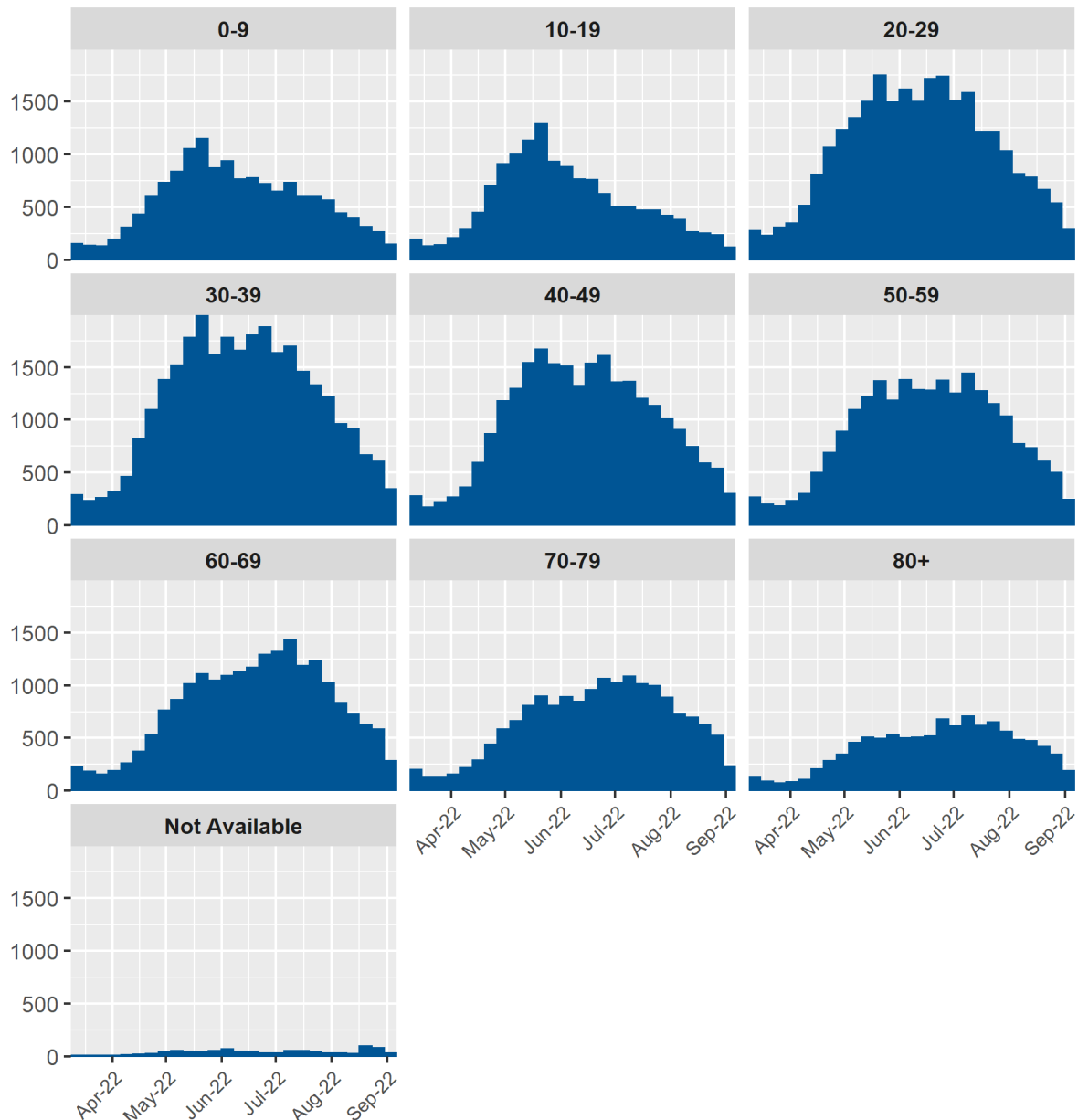
1. Rates are calculated using population estimates from the 2021 Annual Population Report from Portland State University's College of Urban & Public Affairs Population Research Center and 2020 housing and demographic data from the U.S. Census Bureau's American Community Survey (ACS).
2. Additional data are available at <https://public.tableau.com/app/profile/oregon.health.authority.covid.19/viz/Oregon-COVID-19CaseDemographicsandDiseaseSeverityStatewide/DemographicDataHosp>; and <https://public.tableau.com/app/profile/oregon.health.authority.covid.19/viz/Oregon-COVID-19CaseDemographicsandDiseaseSeverityStatewide/SeverityTrends>.

# COVID-19 Biweekly Report

Oregon's Biweekly Data Report



Figure 5. COVID-19 cases (counts) in the last 6 months by age and week of onset



In this paneled bar graph, COVID-19 case counts by age are displayed over the past six months. Each panel corresponds with a different age group. The peaks and dips in case counts across age generally align throughout the past six months. More detailed

# COVID-19 Biweekly Report

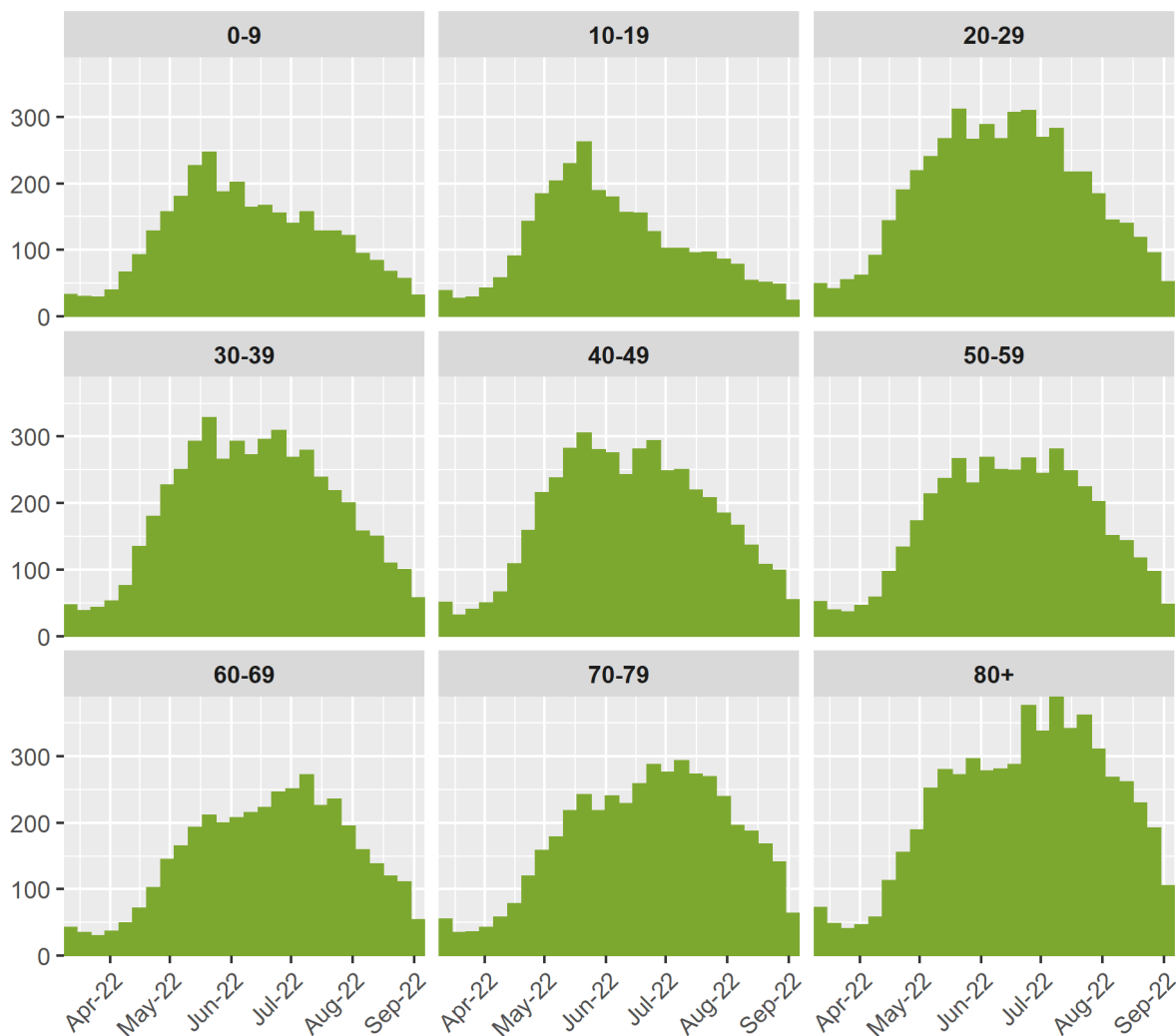
Oregon's Biweekly Data Report



information on case counts and rates by age are available at:

<https://public.tableau.com/app/profile/oregon.health.authority.covid.19/viz/OregonCOVID-19CaseDemographicsandDiseaseSeverityStatewide/DemographicDataHosp>.

**Figure 6. COVID-19 cases (case rate per 100,000) in the last 6 months by age and week of onset**



In this paneled bar graph, COVID-19 case rates per 100,000 by age are displayed over the past six months. Each panel corresponds with a different age group. The peaks and dips in case rates across age generally align throughout the past six months. More

# COVID-19 Biweekly Report

Oregon's Biweekly Data Report



detailed information on case counts and rates by age are available at:  
<https://public.tableau.com/app/profile/oregon.health.authority.covid.19/viz/OregonCOVID-19CaseDemographicsandDiseaseSeverityStatewide/DemographicDataHosp>.

## Race

**Table 4a. Severity and rates of COVID-19 by race, August 21 - September 3, 2022**

Race	Cases	% of total cases	Cases per 100,000	Hospitalized	% Hospitalized	Deaths
> 1 race	110	1.3	41.7	1	0.9	0
American Indian/Alaska Native	82	1.0	175.7	4	4.9	0
Asian	331	3.9	172.5	8	2.4	0
Black	137	1.6	169.5	3	2.2	0
Not Available	2,546	29.6	0.0	33	1.3	10
Other	630	7.3	0.0	11	1.7	1
Pacific Islander	7	0.1	41.7	0	0.0	0
White	4,749	55.3	134.8	249	5.2	21
Total	8,592	100.0	201.4	309	3.6	32

**Table 4b. Severity and rates of COVID-19 by race in the last 6 months**

Race	Cases	% of total cases	Cases per 100,000	Hospitalized	% Hospitalized	Deaths	Case fatality
> 1 race	5,101	2.8	1,935.5	26	0.5	3	0.1
American Indian/Alaska Native	2,033	1.1	4,356.1	60	3.0	10	0.5

# COVID-19 Biweekly Report

Oregon's Biweekly Data Report



Race	Cases	% of total cases	Cases per 100,000	Hospitalized	% Hospitalized	Deaths	Case fatality
Asian	7,707	4.2	4,017.0	151	2.0	15	0.2
Black	3,513	1.9	4,346.3	157	4.5	10	0.3
Not Available	59,978	32.6	0.0	680	1.1	251	0.4
Other	11,894	6.5	0.0	375	3.2	42	0.4
Pacific Islander	182	0.1	1,083.3	9	4.9	3	1.6
White	93,461	50.8	2,652.4	4,081	4.4	614	0.7
Total	183,869	100.0	4,309.5	5,539	3.0	948	0.5

1. People are asked to self-report their race, ethnicity, tribal affiliation, country of origin, or ancestry.
2. Rates are calculated using population estimates from the 2021 Annual Population Report from Portland State University's College of Urban & Public Affairs Population Research Center and 2020 housing and demographic data from the U.S. Census Bureau's American Community Survey (ACS).
3. Persons for whom race information was not available were not included in these estimates. The number of persons with race data unavailable can be found in Tables 4a and 4b.
4. 5,521 (46.4%) of the 11,894 persons who identify as "Other" race also self-identify as Hispanic or Latino.
5. Additional data are available at <https://public.tableau.com/app/profile/oregon.health.authority.covid.19/viz/Oregon-COVID-19CaseDemographicsandDiseaseSeverityStatewide/DemographicDataHosp;> and [https://public.tableau.com/app/profile/oregon.health.authority.covid.19/viz/Oregon-COVID-19CaseDemographicsandDiseaseSeverityStatewide/SeverityTrends.](https://public.tableau.com/app/profile/oregon.health.authority.covid.19/viz/Oregon-COVID-19CaseDemographicsandDiseaseSeverityStatewide/SeverityTrends)

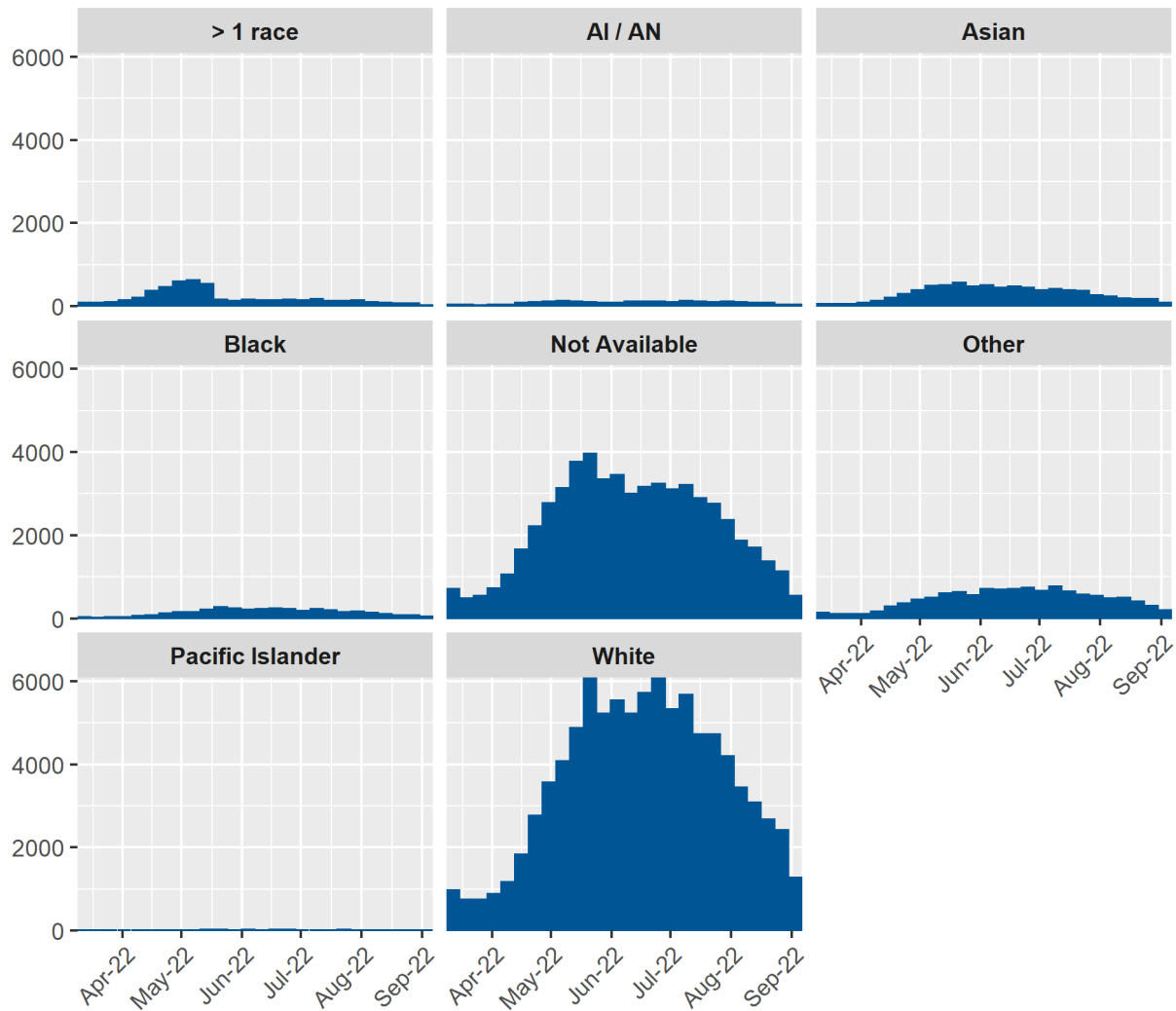


# COVID-19 Biweekly Report

Oregon's Biweekly Data Report



Figure 7. COVID-19 cases (counts) in the last 6 months by race and week of onset



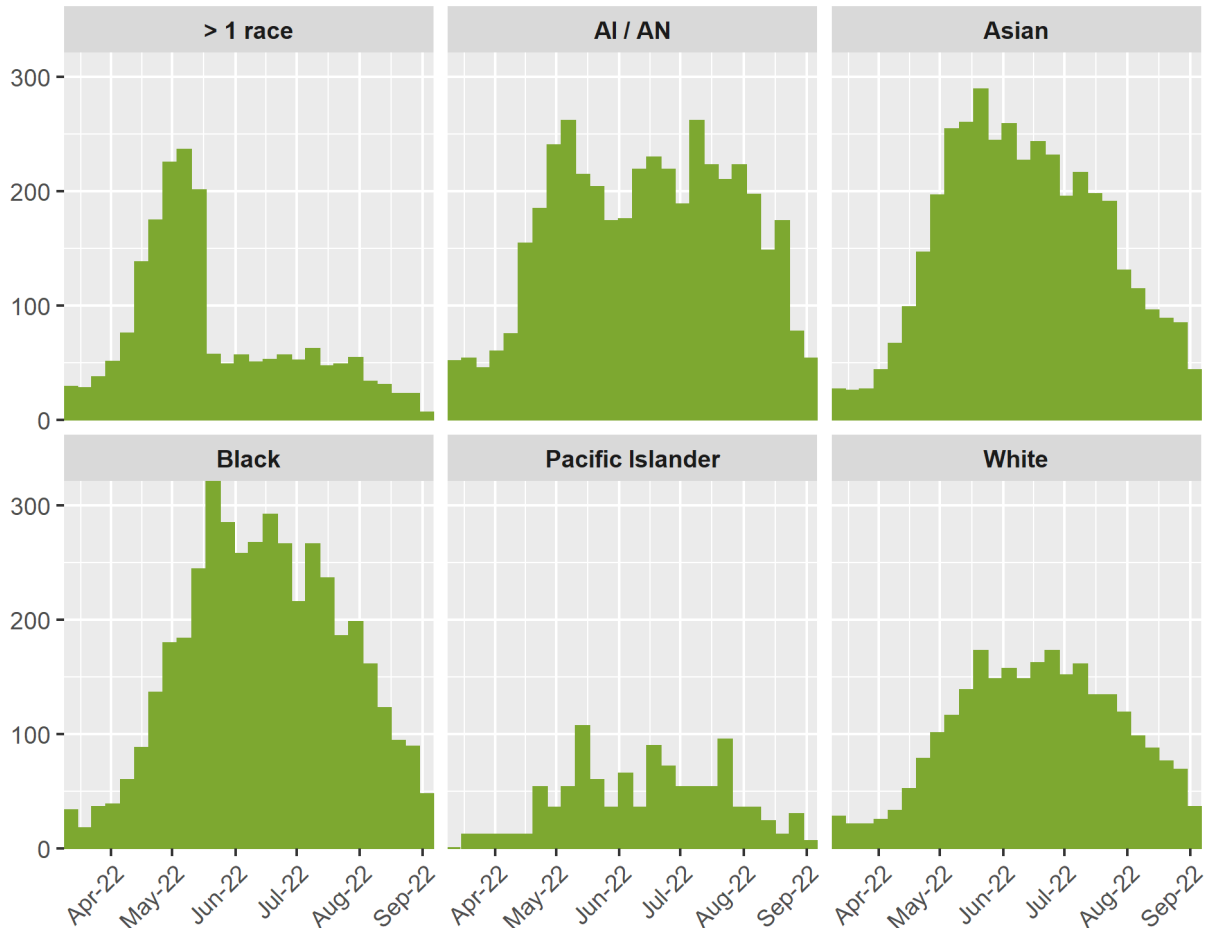
In this paneled bar graph, COVID-19 case counts by race are displayed over the past six months. Each panel corresponds with a different race. The peaks and dips in case counts across race generally align throughout the past six months. More detailed information on case counts and rates by race are available at: <https://public.tableau.com/app/profile/oregon.health.authority.covid.19/viz/OregonCOVID-19CaseDemographicsandDiseaseSeverityStatewide/DemographicDataHosp>.

# COVID-19 Biweekly Report

Oregon's Biweekly Data Report



**Figure 8. COVID-19 cases (case rates per 100,000) in the last 6 months by race and week of onset**



In this paneled bar graph, COVID-19 case rates per 100,000 by race are displayed over the past six months. Each panel corresponds with a different race. The peaks and dips in case rates generally align across race in the past six months, with cases rates tending to be highest for American Indian or Alaska Native persons and for Black, African and African American persons. Case rates tend to be lowest among Pacific Islander persons, White persons, and Multiracial persons. More detailed information on case counts and rates by race are available at:

<https://public.tableau.com/app/profile/oregon.health.authority.covid.19/viz/OregonCOVID-19CaseDemographicsandDiseaseSeverityStatewide/DemographicDataHosp>.

# COVID-19 Biweekly Report

Oregon's Biweekly Data Report



## Ethnicity

**Table 5a. Severity and rates of COVID-19 by ethnicity, August 21 - September 3, 2022**

Ethnicity	Cases	% of total cases	Cases per 100,000	Hospitalized	% Hospitalized	Deaths
Hispanic	657	7.6	116.4	8	1.2	1
Not Hispanic	4,586	53.4	123.9	246	5.4	17
Unknown	3,349	39.0	0.0	55	1.6	14
Total	8,592	100.0	201.4	309	3.6	32

**Table 5b. Severity and rates of COVID-19 by ethnicity in the last 6 months**

Ethnicity	Cases	% of total cases	Cases per 100,000	Hospitalized	% Hospitalized	Deaths	Case fatality
Hispanic	12,310	6.7	2,181.8	310	2.5	20	0.2
Not Hispanic	95,176	51.8	2,570.7	4,157	4.4	563	0.6
Unknown	76,383	41.5	0.0	1,072	1.4	365	0.5
Total	183,869	100.0	4,309.5	5,539	3.0	948	0.5

1. Rates are calculated using population estimates from the 2021 Annual Population Report from Portland State University's College of Urban & Public Affairs Population Research Center and 2020 housing and demographic data from the U.S. Census Bureau's American Community Survey (ACS).
2. Additional data are available at <https://public.tableau.com/app/profile/oregon.health.authority.covid.19/viz/Oregon-COVID-19CaseDemographicsandDiseaseSeverityStatewide/DemographicDataHosp;> and

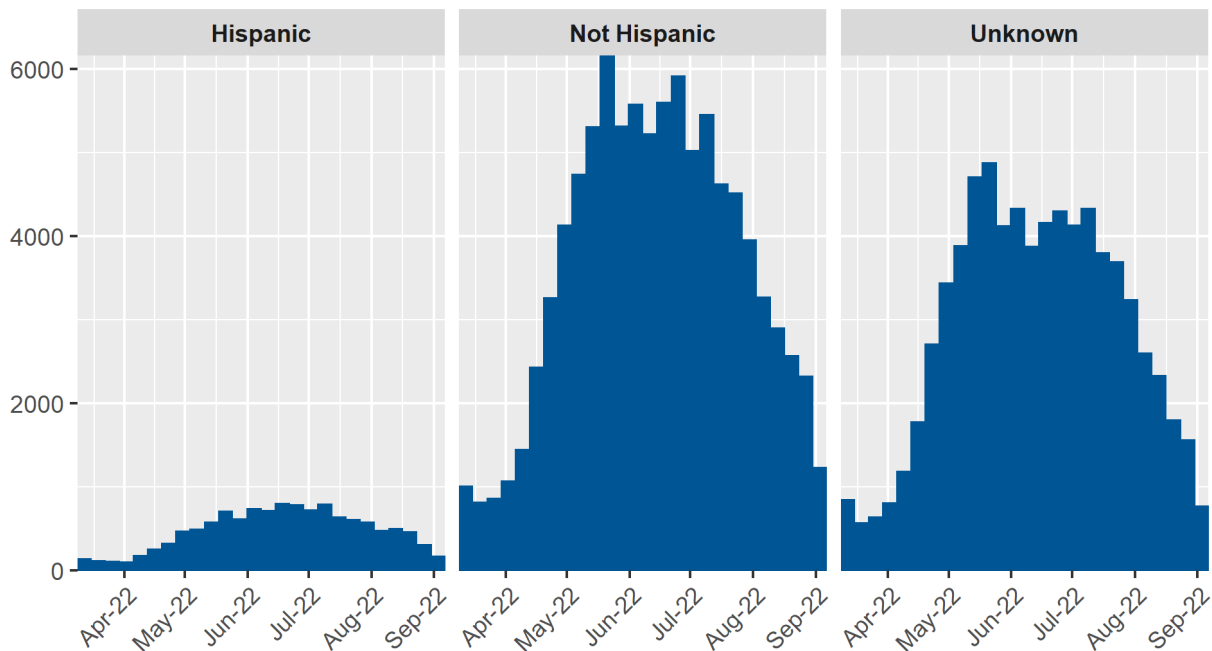
# COVID-19 Biweekly Report

Oregon's Biweekly Data Report



<https://public.tableau.com/app/profile/oregon.health.authority.covid.19/viz/OregonCOVID-19CaseDemographicsandDiseaseSeverityStatewide/SeverityTrends>.

**Figure 9. COVID-19 cases (counts) in the last 6 months by ethnicity and week of onset**



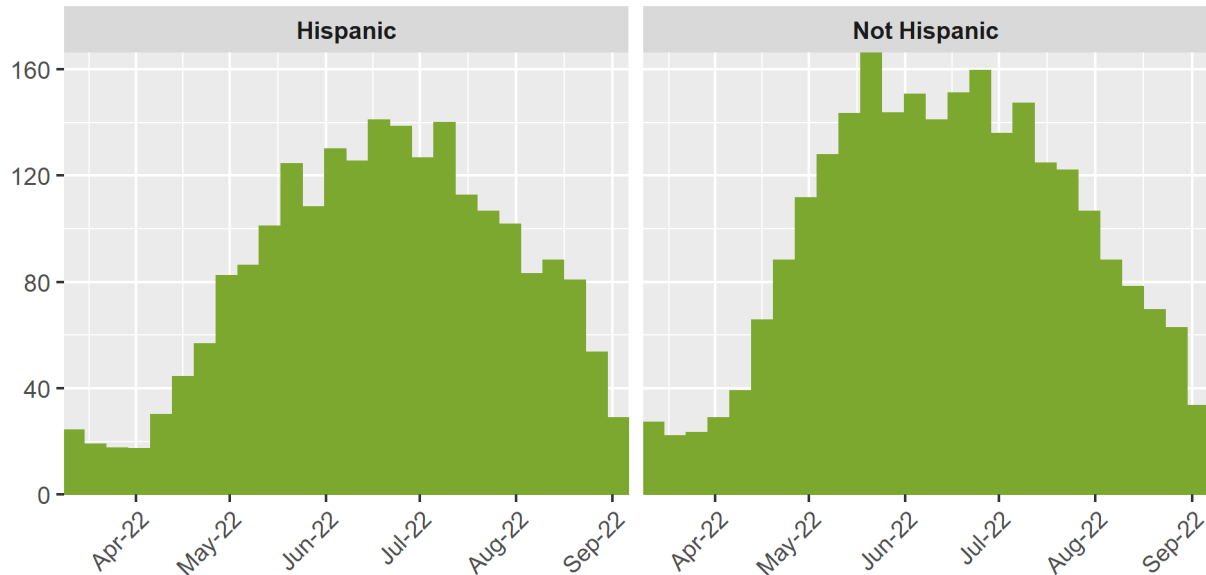
In this paneled bar graph, COVID-19 case counts by ethnicity are displayed over the past six months. Each panel corresponds with a different ethnicity. The peaks and dips in case counts across ethnicity generally align throughout the past six months. More detailed information on case counts and rates by ethnicity are available at: <https://public.tableau.com/app/profile/oregon.health.authority.covid.19/viz/OregonCOVID-19CaseDemographicsandDiseaseSeverityStatewide/DemographicDataHosp>.

# COVID-19 Biweekly Report

Oregon's Biweekly Data Report



**Figure 10. COVID-19 cases (case rates per 100,000) in the last 6 months by ethnicity and week of onset**



In this paneled bar graph, COVID-19 case rates per 100,000 by ethnicity are displayed over the past six months. Each panel corresponds with a different ethnicity. The peaks and dips in case rates across ethnicity generally align throughout the past six months. More detailed information on case counts and rates by ethnicity are available at: <https://public.tableau.com/app/profile/oregon.health.authority.covid.19/viz/OregonCOVID-19CaseDemographicsandDiseaseSeverityStatewide/DemographicDataHosp>.

## People with Intellectual and Developmental Disabilities

As of June 6, 2022, OHA is aware of 4,655 people with intellectual or developmental disabilities who have had COVID-19 to date. This includes individuals who live in congregate settings and in family or individual homes. To date, there are 62 deaths among people with intellectual or developmental disabilities. This number is from conducting a match between the Oregon Department of Human Services Office of Developmental Disabilities Services (ODDS) client list and the Oregon COVID-19 case database. OHA will update this number on a quarterly basis.

# COVID-19 Biweekly Report

Oregon's Biweekly Data Report



Additional information about the ODDS program and COVID-19 can be found here: <https://www.oregon.gov/dhs/SENIORS-DISABILITIES/DD/ODDS%20Resource%20Library/ODDS-Residential-COVID-19-Report.pdf>.

ODDS data are based on self-reports from providers and case management entities and therefore may differ from testing data received from OHA.

## Weekly COVID-19 Hospitalizations (HOSCAP)

OHA is publishing data on the number of COVID-19 hospitalizations by hospital in the prior week; data are from HOSCAP. Maps and tables containing the 7-day average of hospitalizations by region and hospital are available online at:

<https://public.tableau.com/app/profile/oregon.health.authority.covid.19/viz/OregonCOVID-19HospitalCapacity/HospitalizationbyFacility>.

Information on Oregon's current hospital bed capacity by region is available online at: <https://public.tableau.com/app/profile/oregon.health.authority.covid.19/viz/OregonCOVID-19HospitalCapacity/BedAvailabilitybyRegion>.

## ZIP code

OHA publishes data on cases by ZIP code, available online at:

<https://public.tableau.com/profile/oregon.health.authority.covid.19#!/vizhome/OregonCOVID-19CasesbyZIPCode/OregonsCOVID-19CasesbyZipCode>.

Summary table of all zip codes available here:

<https://public.tableau.com/profile/oregon.health.authority.covid.19#!/vizhome/OregonCOVID-19CasesbyZIPCode-SummaryTable/CasesbyZIPCodeSummaryTable>.

## Report Limitations

These data represent a snapshot of reported COVID-19 cases, and they include data on cases with pending investigations. The data shown in this report come from Oregon's electronic reportable disease surveillance system. Not all reported cases have been interviewed. In January 2022, public health case investigation and contact tracing operations were changed to prioritize responding to outbreaks in high-consequence settings, such as healthcare, congregate care (e.g., nursing homes), carceral settings,

# COVID-19 Biweekly Report

Oregon's Biweekly Data Report



and settings related to our food chain. Public health is no longer calling all cases to attempt interview to assess hospitalization status, symptoms and risks.

## Additional Information & Available Resources

Vaccination is the best way to prevent infection and transmission of COVID-19. For more information about COVID-19 vaccines, visit: <https://covidvaccine.oregon.gov>.

The CDC recommends everyone age 12 and older who completed their COVID-19 vaccine primary series, and those ages 5-11 who received Pfizer get a booster dose. For more information about COVID-19 vaccine booster eligibility, visit: [www.cdc.gov/coronavirus/2019-ncov/vaccines/booster-shot.html](http://www.cdc.gov/coronavirus/2019-ncov/vaccines/booster-shot.html) and <https://govstatus.egov.com/or-oha-booster-covid-19-vaccine>.

### How do I find a COVID-19 vaccine or booster?

Visit <https://getvaccinated.oregon.gov/#/>.

### Where can I find a COVID-19 testing site?

Visit <https://govstatus.egov.com/or-oha-covid-19-testing>.

### What should I do if I or a member of my household was exposed or test positive for COVID-19?

Visit <https://govstatus.egov.com/or-oha-covid-19-positive-test>.

Call 866-917-8881 toll free or text OHACOVID to 61222 if you test positive.

Let public health know about your symptoms or positive test with this quick online survey: <https://redcap.oha.oregon.gov/surveys/?s=JKHYT7EA99WEJPW9>.

### How can I get treatment to prevent severe symptoms of COVID-19?

Treatment for COVID-19 is now widely available. Many effective treatments exist, and most work best if taken within 5 days of onset. Find treatment options for yourself and others at: <https://govstatus.egov.com/or-oha-covid-19-treatments>.

### Who can I talk to if I need help?

# COVID-19 Biweekly Report

Oregon's Biweekly Data Report



Dial 2-1-1 for help with testing, vaccines, or general questions. You may also be able to find assistance covering COVID-19-related expenses through your local county public health department.

## What other COVID-19 data are available?

Data on mortality in Oregon, including deaths associated with COVID-19 are available at <https://public.tableau.com/app/profile/oha.center.for.health.statistics>.

Additional data on age and disease severity of people diagnosed with COVID-19 are available at <https://public.tableau.com/app/profile/oregon.health.authority.covid.19/viz/OregonCOVID-19CaseDemographicsandDiseaseSeverityStatewide/DiseaseSeverity>.

Additional data on cases of COVID-19 by hospitalization status over time are available at <https://public.tableau.com/app/profile/oregon.health.authority.covid.19/viz/OregonHealthAuthorityCOVID-19DataDashboard/COVID-19EPICases>.

Additional information on cases of COVID-19 by county are available at <https://public.tableau.com/app/profile/oregon.health.authority.covid.19/viz/OregonCOVID-19Update/DailyDataUpdate>; and at <https://public.tableau.com/app/profile/oregon.health.authority.covid.19/viz/OregonCOVID-19TestingandOutcomesbyCounty/OregonsCOVID-19TestingandOutcomesbyCounty>.

**Document accessibility:** For individuals with disabilities or individuals who speak a language other than English, OHA can provide information in alternate formats such as translations, large print, or braille. Contact the Health Information Center at 1-971-673-2411, 711 TTY or [COVID19.LanguageAccess@dhs.oha.state.or.us](mailto:COVID19.LanguageAccess@dhs.oha.state.or.us).