

COVID-19 Breakthrough Report

Oregon's Weekly Surveillance Summary



Breakthrough case report - January 6, 2022

Background

Data for the weekly breakthrough case report will include data through the most recent Sunday and the report will be published on Thursdays.¹ Vaccine breakthrough cases are defined as instances in which an individual tests positive for COVID-19 at least 14 days following the completion of any COVID-19 vaccine series.² Vaccine breakthrough cases that result in hospitalization or death are reported to CDC.

This report includes only those vaccine breakthrough cases which are reported to public health following a positive test result. Many vaccine breakthrough cases are believed to experience no symptoms or minimal symptoms.³ These cases are unlikely to undergo testing for COVID-19 and be reported to public health. Therefore, the true number of vaccine breakthrough cases is unknown. The number of vaccine breakthrough cases must be interpreted within the context of the more than 2.7 million people in Oregon who have completed a COVID-19 vaccine series.

COVID-19 cases in vaccinated and unvaccinated people

Weekly summary

During the week of December 26–January 1, there were 15,239 cases of COVID-19. 10,579 (69.4%) were unvaccinated and 4,660 (30.6%) were vaccine breakthrough cases. The median age of breakthrough cases was 39 years. 26 (0.6%) breakthrough cases were residents of care facilities, senior living communities or other congregate living settings. 592 (12.7%) cases were 65 or older. There were 271 (5.8%) cases aged 12-17.

¹ The weekly summary, Figure 1, and Figure 2 use the date that cases are reported to OHA, to provide information on the most recently identified cases. All other dates in this report use specimen collection date to align with the breakthrough case definition.

² This definition is consistent with the CDC's definition, available here: <https://www.cdc.gov/vaccines/covid-19/downloads/COVID-vaccine-breakthrough-case-investigations-Protocol.pdf>

³ Bergwerk, M., Gonen, T., Lustig, Y., Amit, S., Lipsitch, M., Cohen, C., Mandelboim, M., Gal Levin, E., Rubin, C., Indenbaum, V. and Tal, I., 2021. Covid-19 breakthrough infections in vaccinated health care workers. *New England Journal of Medicine*.

COVID-19 Breakthrough Report

Oregon's Weekly Surveillance Summary



OHA publishes the most up-to-date information about cases from the most recently completed MMWR week. However, not all information about a case's vaccination status may be available at the time of publication. Table 1 includes updated totals of COVID-19 cases by vaccine breakthrough status for the previous six weeks.

Table 1. COVID-19 cases by vaccine breakthrough status over the previous 6 weeks

MMWR week ending	Total cases	Breakthrough cases	Percent breakthrough case
2021-11-27	4,114	1,292	31.4
2021-12-04	6,474	2,052	31.7
2021-12-11	4,972	1,537	30.9
2021-12-18	5,371	1,707	31.8
2021-12-25	6,967	3,062	44.0
2022-01-01	15,239	4,660	30.6

Cumulative summary

Overall, there have been 58,841 vaccine breakthrough cases identified in Oregon. The median age of breakthrough cases is 45 years (range: 5-106). 1,759 (3%) breakthrough cases were residents of care facilities, senior living communities or other congregate living settings. 12,721 (21.6%) cases were 65 or older. There have been a total of 1,918 (3.3%) cases aged 12-17. Breakthrough cases have been reported in all 36 counties.

Cases of COVID-19 are much more common in unvaccinated⁴ individuals than in vaccinated individuals (Figure 1). The rate of COVID-19 cases among unvaccinated individuals in the most recent week was more than 4 times the rate of COVID-19 cases among those who are fully vaccinated. Community spread is extreme throughout the state. As COVID-19 cases have increased across Oregon, vaccine breakthrough cases have also increased, but at a much lower rate than in the unvaccinated. Vaccination, including boosting, remains the most effective tool to reduce the spread of COVID-19.

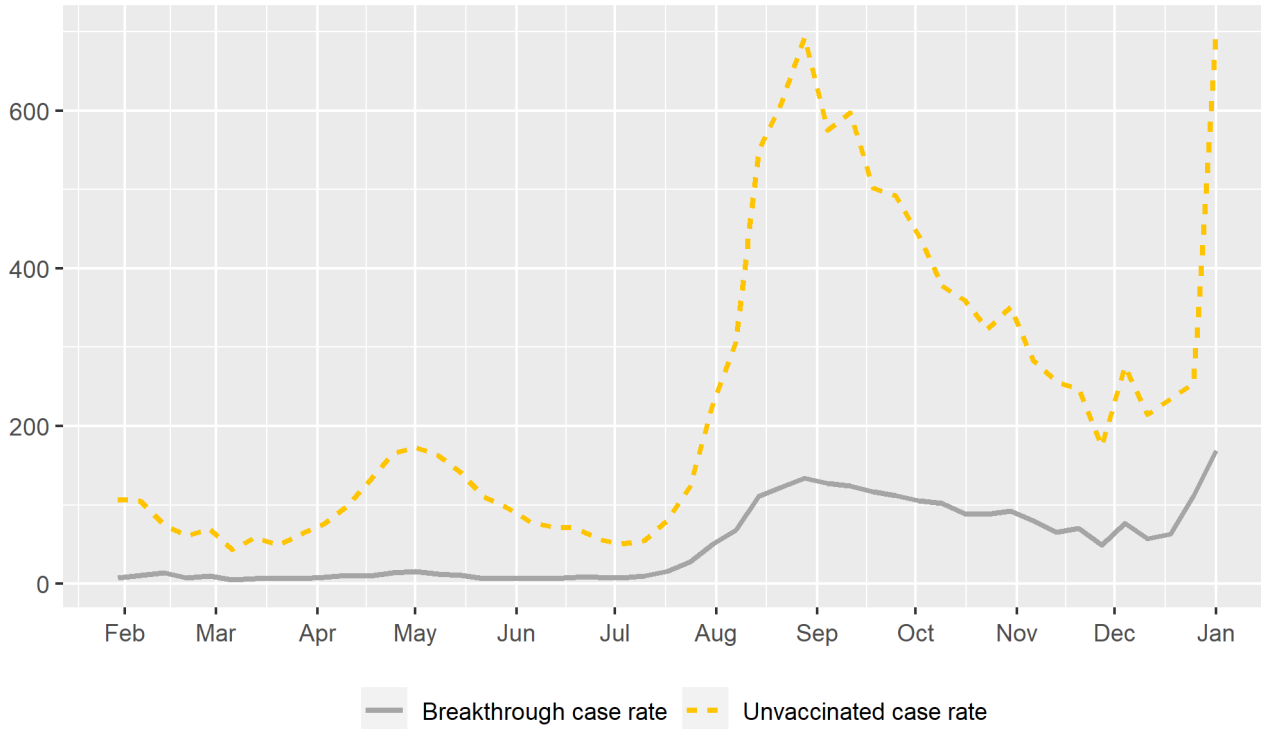
⁴ Unvaccinated persons are defined as people who have not received an approved COVID-19 vaccine, or who have not completed a COVID-19 vaccine series.

COVID-19 Breakthrough Report

Oregon's Weekly Surveillance Summary



Figure 1. COVID-19 cases per 100,000 per week, by vaccination status



Vaccine breakthrough cases and severity

The Pfizer, Moderna and Johnson & Johnson COVID-19 vaccines are all highly effective at preventing severe COVID-19 illness and death. Table 2 includes totals of breakthrough cases by vaccine

COVID-19 Breakthrough Report

Oregon's Weekly Surveillance Summary



manufacturer and severity. Relatively few breakthrough cases have been hospitalized, and even fewer have died (Figure 2).⁵

Table 2. COVID-19 Breakthrough cases by vaccine manufacturer and severity⁶

Vaccine manufacturer	Primary series completed	Cases	Hospitalizations	Deaths	Cases per 100,000 vaccinated
Pfizer	1,582,943	30,930	1,077	353	1,954.0
Moderna	952,810	15,996	684	182	1,678.8
Johnson & Johnson/Janssen	238,405	6,752	343	92	2,832.2

⁵ A death is considered to be related to COVID-19 in any of the following circumstances: a) death of a confirmed or probable COVID-19 case within 60 days of the earliest available date among exposure to a confirmed case, onset of symptoms, or date of specimen collection for the first positive test; b) death from any cause in a hospitalized person during admission or in the 60 days following discharge AND a COVID-19-positive laboratory diagnostic test at any time since 14 days prior to hospitalization; or c) death of someone with a COVID-19-specific ICD-10 code listed as a primary or contributing cause of death on a death certificate, regardless of the dates of diagnosis or death.

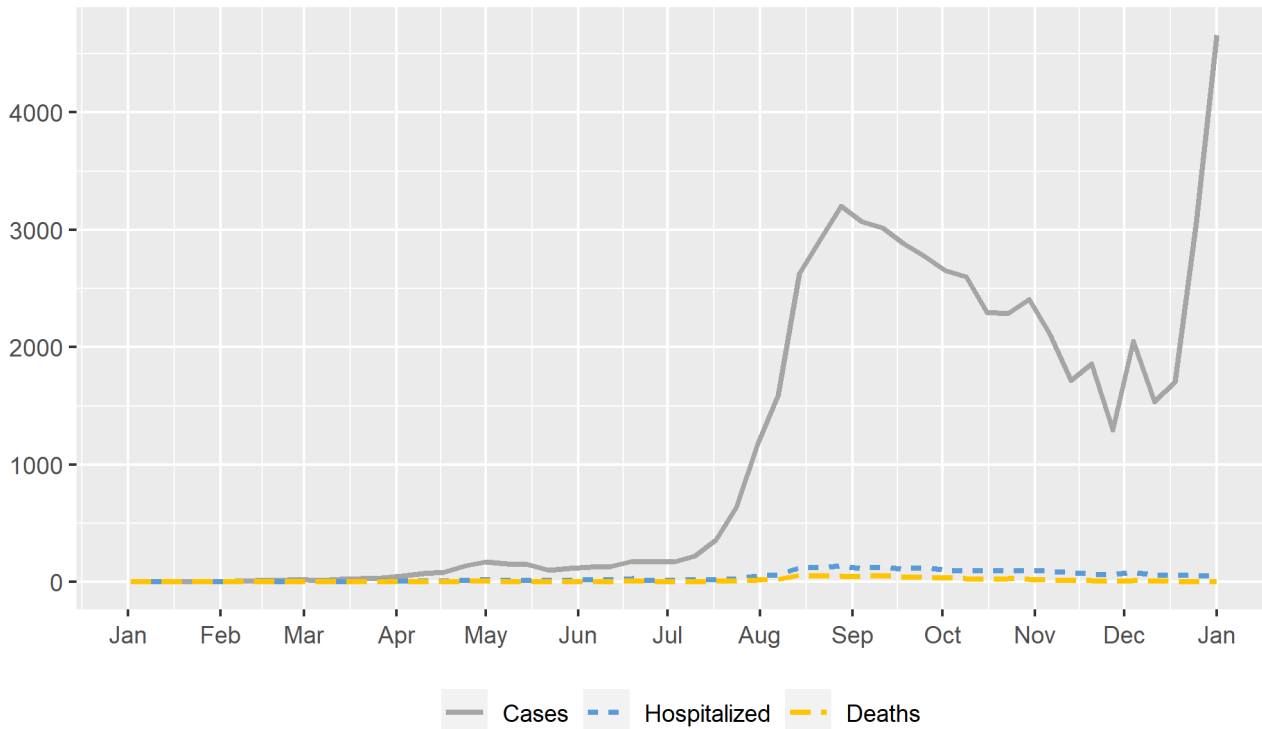
⁶ Table 2 provides the number of cases per 100,000 vaccinated individuals by vaccine manufacturer. Because this figure does not account for the time that each person has been fully vaccinated, it is not a true rate and should not be interpreted as such.

COVID-19 Breakthrough Report

Oregon's Weekly Surveillance Summary



Figure 2. COVID-19 breakthrough cases, hospitalizations and deaths, by week



To date, 4% of all known breakthrough cases have been hospitalized (n=2,367), and only 1.2% have died (n=678).⁷ The median age of the people who have died is 81 (range: 29-103). It is important to note that not all vaccine breakthrough cases are reported to public health, which may cause the proportions in the following section to appear higher than in reality. These figures are not vaccine breakthrough hospitalization or death rates and should not be interpreted as such.

Tables 3, 4 and 5 provide detailed vaccine breakthrough severity data by age, race and ethnicity. Both the risk of hospitalization and death increase with age.

⁷ Cumulative deaths reported here reflect all breakthrough cases known to have died since January 1, 2021. There may be a lag of several weeks between when an individual dies and when their death appears in this report. Increases in cumulative deaths between this and subsequent reports should not be interpreted as individuals who have died within the past week.

COVID-19 Breakthrough Report

Oregon's Weekly Surveillance Summary



Table 3. COVID-19 breakthrough cases by age group and severity

Age group	Breakthrough cases	Breakthrough hospitalizations	Breakthrough deaths
0-9	4	0	0
10-19	3,193	15	0
20-29	9,257	58	1
30-39	10,802	83	2
40-49	9,965	120	10
50-59	8,817	237	26
60-69	7,867	497	101
70-79	5,532	635	175
80+	3,404	722	363
Total	58,841	2,367	678

COVID-19 Breakthrough Report

Oregon's Weekly Surveillance Summary



Table 4. COVID-19 breakthrough case severity by race⁸

Race	Cases	Hospitalizations	Deaths
> 1 race	543	18	2
American Indian/Alaska Native	764	34	7
Asian	1,591	49	15
Black	1,028	56	15
Not Available	14,444	319	146
Other	4,292	145	55
Pacific Islander	128	5	1
White	36,051	1,741	437
Total	58,841	2,367	678

Table 5. COVID-19 breakthrough case severity by ethnicity

Ethnicity	Cases	Hospitalizations	Deaths
Hispanic	4,493	106	15
Not Hispanic	31,858	1,534	372
Unknown	22,490	727	291
Total	58,841	2,367	678

⁸ During the case investigation, people are asked to self-report their race, ethnicity, tribal affiliation, country of origin, or ancestry. As of October 2021, 42,423 (80.8%) of the 52,483 persons who identify as "Other" race also self-identify as Hispanic or Latino.

COVID-19 Breakthrough Report

Oregon's Weekly Surveillance Summary



Table 6 provides the proportion of vaccine breakthrough cases who have died with COVID-19. Approximately 80% of vaccine breakthrough deaths have occurred in patients 70 years and older. The proportion of vaccine breakthrough cases who have died with COVID-19 has increased over time. This trend is likely multifactorial and may be associated with increased COVID-19 transmission in our communities, increased disease severity associated with infection caused by the Delta variant and waning immunity over time in elderly populations.

Table 6. COVID-19 deaths by month, by breakthrough case status⁹

Month	Total COVID-19 deaths	Vaccine breakthrough deaths	Percent vaccine breakthrough deaths
March 2021	122	4	3.3
April 2021	113	6	5.3
May 2021	212	19	9.0
June 2021	108	15	13.9
July 2021	92	16	17.4
August 2021	586	131	22.4
September 2021	907	193	21.3
October 2021	642	175	27.3
November 2021	355	81	22.8
December 2021	177	36	20.3

⁹ Data in Table 6 will be updated monthly and will reflect cases from the previous month.

COVID-19 Breakthrough Report

Oregon's Weekly Surveillance Summary



COVID-19 variants

Table 7. COVID-19 breakthrough cases associated with variants of concern¹⁰

Overall, approximately 7.7% of positive molecular specimens in Oregon have been sequenced. Omicron is currently the dominant variant circulating in Oregon. At this time, vaccine breakthrough cases appear to reflect the variants circulating in the community. Additional information on variants can be found here:

<https://public.tableau.com/app/profile/oregon.health.authority.covid.19/viz/GISAIDVariantDashboardUpdated/OregonVariantDashboard>

Subtype	Cases
Omicron (B.1.1.529)	11
Delta (B.1.617.2)	2,083

Table 8. COVID-19 breakthrough cases associated with variants being monitored

Subtype	Cases
Alpha (B.1.1.7)	152
Beta (B.1.351)	17
Gamma (P.1)	63
Epsilon (B.1.427/B.1.429)	40
Iota (B.1.526)	30

¹⁰ As of September 29, OHA will align with CDC's classification of SARS-CoV-2 variants. Variant classification scheme defines four classes of SARS-CoV-2 variants: variants of concern, variants of interest, variants being monitored, and variants of high consequence.

COVID-19 Breakthrough Report

Oregon's Weekly Surveillance Summary



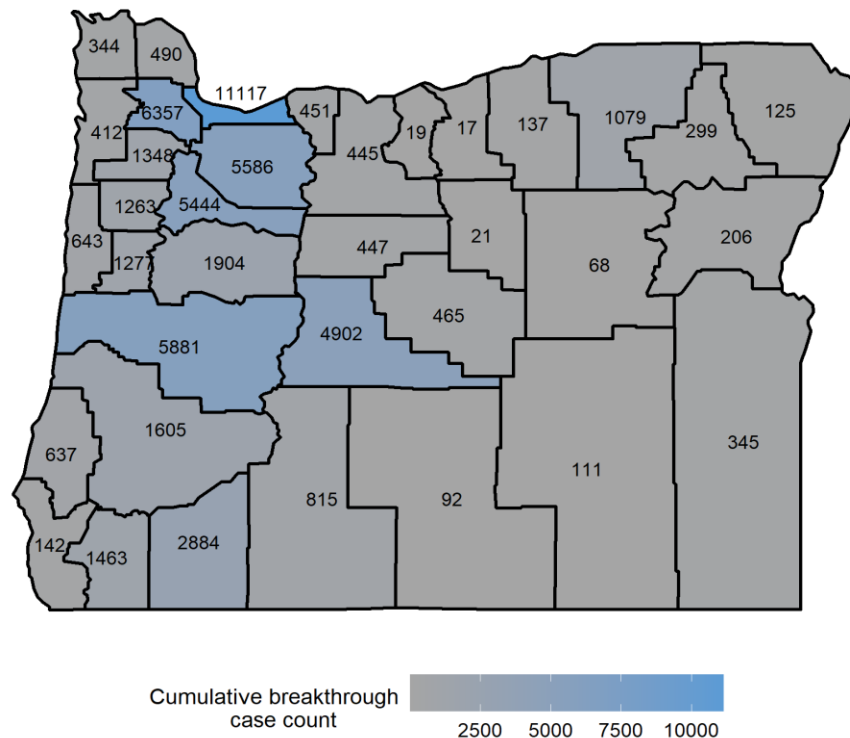
Breakthrough cases by county

Figure 3 and Table 9 show breakthrough cases by county. In general, cumulative breakthrough case counts correspond with the population size of each county. Additional information on cumulative cases can be found here:

<https://public.tableau.com/app/profile/oregon.health.authority.covid.19/viz/OregonCOVID-19TestingandOutcomesbyCounty/OregonsCOVID-19TestingandOutcomesbyCounty>

Table 9 provides both cumulative and weekly data. The “Cases in previous week” column references the number of vaccine breakthrough cases newly reported between December 26 and January 1. This count may not reflect the full number of vaccine breakthrough cases that occurred during this time, as breakthrough case ascertainment can lag by several weeks.

Figure 3. Map of COVID-19 breakthrough case cumulative counts, by county of residence¹¹



¹¹ Counties that have a total of fewer than 10 cases will appear grey without a data label.

COVID-19 Breakthrough Report

Oregon's Weekly Surveillance Summary



Table 9. COVID-19 breakthrough cases by county of residence¹²

County	Cumulative cases	Cases in previous week
Baker	206	12
Benton	1277	99
Clackamas	5586	620
Clatsop	344	12
Columbia	490	1-9
Coos	637	49
Crook	465	29
Curry	142	1-9
Deschutes	4902	480
Douglas	1605	53
Gilliam	17	1-9
Grant	68	1-9
Harney	111	1-9
Hood River	451	30
Jackson	2884	240
Jefferson	447	57
Josephine	1463	89
Klamath	815	34

¹² Counties that have a total of fewer than 10 cases will be reported as 1-9 cases.

COVID-19 Breakthrough Report

Oregon's Weekly Surveillance Summary



County	Cumulative cases	Cases in previous week
Lake	92	0
Lane	5881	321
Lincoln	643	57
Linn	1904	128
Malheur	345	1-9
Marion	5444	425
Morrow	137	1-9
Multnomah	11117	848
Polk	1263	115
Sherman	19	0
Tillamook	412	38
Umatilla	1079	83
Union	299	21
Wallowa	125	1-9
Wasco	445	20
Washington	6357	657
Wheeler	21	1-9
Yamhill	1348	97