

COVID-19 Breakthrough Report

Oregon's Weekly Surveillance Summary



Breakthrough case report - January 20, 2022

Background

Data for the weekly breakthrough case report will include data through the most recent Sunday and the report will be published on Thursdays.¹ Vaccine breakthrough cases are defined as instances in which an individual tests positive for COVID-19 at least 14 days following the completion of any primary COVID-19 vaccine series.² Vaccine breakthrough cases that result in hospitalization or death are reported to CDC.

This report includes only those vaccine breakthrough cases which are reported to public health following a positive test result. Many vaccine breakthrough cases are believed to experience no symptoms or minimal symptoms.³ These cases are unlikely to undergo testing for COVID-19 and be reported to public health. Therefore, the true number of vaccine breakthrough cases is unknown. The number of vaccine breakthrough cases must be interpreted within the context of approximately 2.8 million people in Oregon who have completed a primary COVID-19 vaccine series.

COVID-19 cases in vaccinated and unvaccinated people

Weekly summary

During the week of January 9–January 15, there were 55,612 cases of COVID-19. 45,042 (81%) were unvaccinated and 10,570 (19%) were vaccine breakthrough cases. The median age of breakthrough cases was 38 years. 53 (0.5%) breakthrough cases were residents of care facilities, senior living communities or other congregate living settings. 1316 (12.5%) cases were 65 or older. There were 958 (9.1%) cases aged 12-17.

¹ The weekly summary, Figure 1, and Figure 2 use the date that cases are reported to OHA, to provide information on the most recently identified cases. All other dates in this report use specimen collection date to align with the breakthrough case definition.

² This definition is consistent with the CDC's definition, available here: <https://www.cdc.gov/vaccines/covid-19/downloads/COVID-vaccine-breakthrough-case-investigations-Protocol.pdf>

³ Bergwerk, M., Gonen, T., Lustig, Y., Amit, S., Lipsitch, M., Cohen, C., Mandelboim, M., Gal Levin, E., Rubin, C., Indenbaum, V. and Tal, I., 2021. Covid-19 breakthrough infections in vaccinated health care workers. *New England Journal of Medicine*.

COVID-19 Breakthrough Report

Oregon's Weekly Surveillance Summary



OHA publishes the most up-to-date information about cases from the most recently completed MMWR week. However, not all information about a case's vaccination status may be available at the time of publication. Table 1 includes updated totals of COVID-19 cases by vaccine breakthrough status for the previous six weeks.

Table 1. COVID-19 cases by vaccine breakthrough status over the previous 6 weeks

MMWR week ending	Total cases	Breakthrough cases	Percent breakthrough case
2021-12-11	4,971	1,556	31.3
2021-12-18	5,369	1,752	32.6
2021-12-25	6,962	3,235	46.5
2022-01-01	15,233	6,509	42.7
2022-01-08	45,322	14,340	31.6
2022-01-15	55,612	10,570	19.0

Cumulative summary

Overall, there have been 88,293 vaccine breakthrough cases identified in Oregon. The median age of breakthrough cases is 42 years (range: 5-106). 1,893 (2.1%) breakthrough cases were residents of care facilities, senior living communities or other congregate living settings. 15,907 (18%) cases were 65 or older. There have been a total of 4,391 (5%) cases aged 12-17. Breakthrough cases have been reported in all 36 counties.

Cases of COVID-19 are much more common in unvaccinated⁴ individuals than in vaccinated individuals (Figure 1). The rate of COVID-19 cases among unvaccinated individuals in the most recent week was nearly 8 times the rate of COVID-19 cases among those who are fully vaccinated. Community spread is extreme throughout the state. As COVID-19 cases have increased across Oregon, vaccine breakthrough cases have also increased, but at a much lower rate than in the unvaccinated. Vaccination, including boosting, remains the most effective tool to reduce the spread of COVID-19.

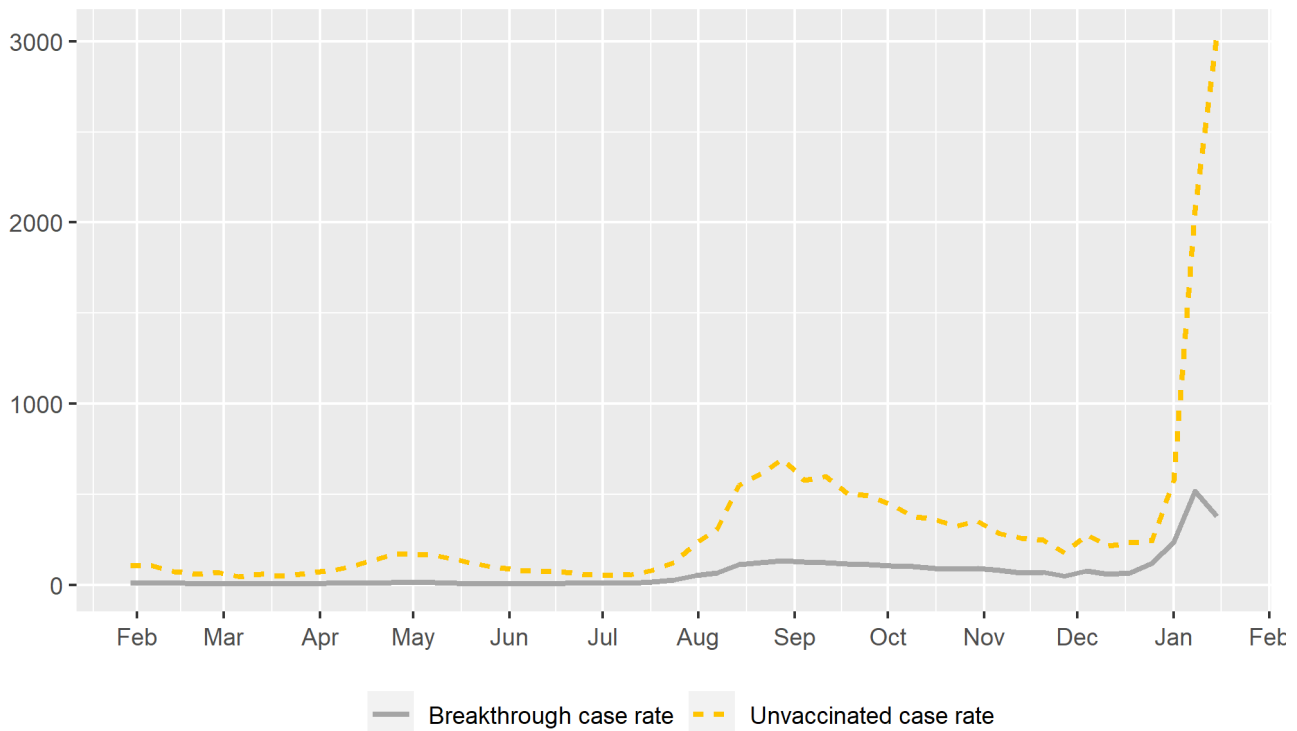
⁴ Unvaccinated persons are defined as people who have not received an approved COVID-19 vaccine, or who have not completed a COVID-19 vaccine series.

COVID-19 Breakthrough Report

Oregon's Weekly Surveillance Summary



Figure 1. COVID-19 cases per 100,000 per week, by vaccination status



Vaccine breakthrough cases and severity

The Pfizer, Moderna and Johnson & Johnson COVID-19 vaccines are all highly effective at preventing severe COVID-19 illness and death. Table 2 includes totals of breakthrough cases by vaccine manufacturer and severity. Relatively few breakthrough cases have been hospitalized, and even fewer have died (Figure 2).⁵

⁵ A death is considered to be related to COVID-19 in any of the following circumstances: a) death of a confirmed or probable COVID-19 case within 60 days of the earliest available date among exposure to a confirmed case, onset of symptoms, or date of specimen collection for the first positive test; b) death from any cause in a hospitalized person during admission or in the 60 days following discharge AND a COVID-19-positive laboratory diagnostic test at any time since 14 days prior to hospitalization; or c) death of someone with a COVID-19-specific ICD-10 code listed as a primary or contributing cause of death on a death certificate, regardless of the dates of diagnosis or death.

COVID-19 Breakthrough Report

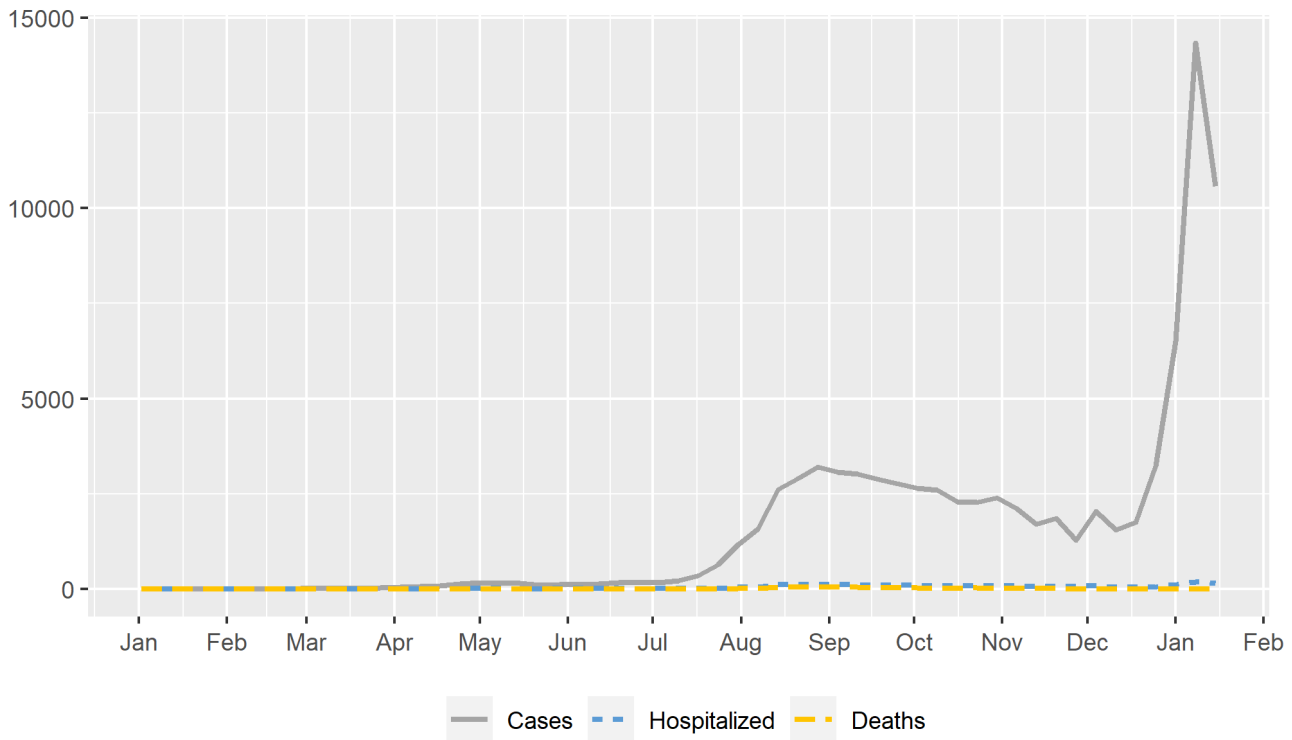
Oregon's Weekly Surveillance Summary



Table 2. COVID-19 Breakthrough cases by vaccine manufacturer and severity⁶

Vaccine manufacturer	Primary series completed	Cases	Hospitalizations	Deaths	Cases per 100,000 vaccinated
Pfizer	1,606,397	48,410	1,293	372	3,013.6
Moderna	958,108	24,384	825	196	2,545.0
Johnson & Johnson/Janssen	240,402	9,034	417	95	3,757.9

Figure 2. COVID-19 breakthrough cases, hospitalizations and deaths, by week



⁶ Table 2 provides the number of cases per 100,000 vaccinated individuals by vaccine manufacturer. Because this figure does not account for the time that each person has been fully vaccinated, it is not a true rate and should not be interpreted as such.

COVID-19 Breakthrough Report

Oregon's Weekly Surveillance Summary



To date, 3.2% of all known breakthrough cases have been hospitalized (n=2,819), and only 0.8% have died (n=718).⁷ The median age of the people who have died is 81 (range: 29-103). It is important to note that not all vaccine breakthrough cases are reported to public health, which may cause the proportions in the following section to appear higher than in reality. These figures are not vaccine breakthrough hospitalization or death rates and should not be interpreted as such.

Tables 3, 4 and 5 provide detailed vaccine breakthrough severity data by age, race and ethnicity. Both the risk of hospitalization and death increase with age.

Table 3. COVID-19 breakthrough cases by age group and severity

Age group	Breakthrough cases	Breakthrough hospitalizations	Breakthrough deaths
0-9	34	0	0
10-19	6,822	22	0
20-29	15,966	82	1
30-39	16,661	120	3
40-49	14,924	149	10
50-59	12,521	288	28
60-69	10,303	582	107
70-79	6,939	749	186
80+	4,123	827	383
Total	88,293	2,819	718

⁷ Cumulative deaths reported here reflect all breakthrough cases known to have died since January 1, 2021. There may be a lag of several weeks between when an individual dies and when their death appears in this report. Increases in cumulative deaths between this and subsequent reports should not be interpreted as individuals who have died within the past week.

COVID-19 Breakthrough Report

Oregon's Weekly Surveillance Summary



Table 4. COVID-19 breakthrough case severity by race⁸

Race	Cases	Hospitalizations	Deaths
> 1 race	766	21	2
American Indian/Alaska Native	1,147	37	7
Asian	2,798	66	15
Black	1,837	77	15
Not Available	22,980	372	152
Other	7,388	176	61
Pacific Islander	154	5	1
White	51,223	2,065	465
Total	88,293	2,819	718

Table 5. COVID-19 breakthrough case severity by ethnicity

Ethnicity	Cases	Hospitalizations	Deaths
Hispanic	7,300	138	16
Not Hispanic	46,980	1,856	394
Unknown	34,013	825	308
Total	88,293	2,819	718

⁸ During the case investigation, people are asked to self-report their race, ethnicity, tribal affiliation, country of origin, or ancestry. As of October 2021, 42,423 (80.8%) of the 52,483 persons who identify as "Other" race also self-identify as Hispanic or Latino.

COVID-19 Breakthrough Report

Oregon's Weekly Surveillance Summary



Table 6 provides the proportion of vaccine breakthrough cases who have died with COVID-19. Approximately 80% of vaccine breakthrough deaths have occurred in patients 70 years and older. The proportion of vaccine breakthrough cases who have died with COVID-19 increased over time and appears to have stabilized. This trend is likely multifactorial and may be associated with the proportion of the population which has received a booster dose and reduced disease severity associated with infection caused by the Omicron variant.

Table 6. COVID-19 deaths by month, by breakthrough case status⁹

Month	Total COVID-19 deaths	Vaccine breakthrough deaths	Percent vaccine breakthrough deaths
March 2021	124	4	3.2
April 2021	119	6	5.0
May 2021	217	19	8.8
June 2021	115	15	13.0
July 2021	94	16	17.0
August 2021	593	132	22.3
September 2021	909	193	21.2
October 2021	643	175	27.2
November 2021	391	90	23.0
December 2021	208	43	20.7

⁹ Data in Table 6 will be updated monthly and will reflect cases from the previous month.

COVID-19 Breakthrough Report

Oregon's Weekly Surveillance Summary



COVID-19 variants

Table 7. COVID-19 breakthrough cases associated with variants of concern¹⁰

Overall, approximately 6.8% of positive molecular specimens in Oregon have been sequenced. Omicron is currently the dominant variant circulating in Oregon. At this time, vaccine breakthrough cases appear to reflect the variants circulating in the community. Additional information on variants can be found here:

<https://public.tableau.com/app/profile/oregon.health.authority.covid.19/viz/GISAIDVariantDashboardUpdated/OregonVariantDashboard>

Subtype	Cases
Omicron (B.1.1.529)	93
Delta (B.1.617.2)	2,129

Table 8. COVID-19 breakthrough cases associated with variants being monitored

Subtype	Cases
Alpha (B.1.1.7)	152
Beta (B.1.351)	17
Gamma (P.1)	63
Epsilon (B.1.427/B.1.429)	40
Iota (B.1.526)	30

¹⁰ As of September 29, OHA will align with CDC's classification of SARS-CoV-2 variants. Variant classification scheme defines four classes of SARS-CoV-2 variants: variants of concern, variants of interest, variants being monitored, and variants of high consequence.

COVID-19 Breakthrough Report

Oregon's Weekly Surveillance Summary



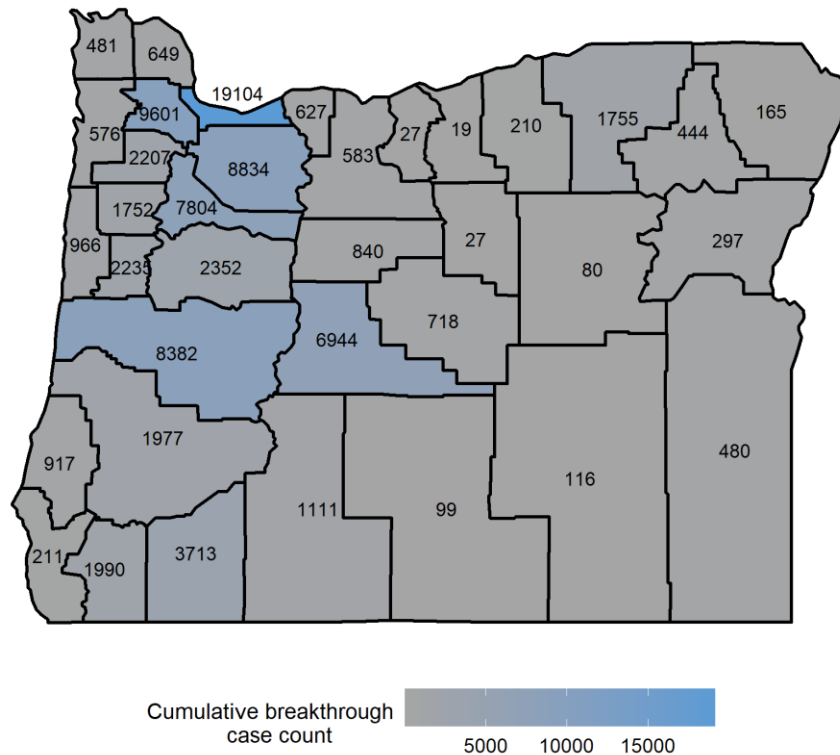
Breakthrough cases by county

Figure 3 and Table 9 show breakthrough cases by county. In general, cumulative breakthrough case counts correspond with the population size of each county. Additional information on cumulative cases can be found here:

<https://public.tableau.com/app/profile/oregon.health.authority.covid.19/viz/OregonCOVID-19TestingandOutcomesbyCounty/OregonsCOVID-19TestingandOutcomesbyCounty>

Table 9 provides both cumulative and weekly data. The “Cases in previous week” column references the number of vaccine breakthrough cases newly reported between January 9 and January 15. This count may not reflect the full number of vaccine breakthrough cases that occurred during this time, as breakthrough case ascertainment can lag by several weeks.

Figure 3. Map of COVID-19 breakthrough case cumulative counts, by county of residence¹¹



¹¹ Counties that have a total of fewer than 10 cases will appear grey without a data label.

COVID-19 Breakthrough Report

Oregon's Weekly Surveillance Summary



Table 9. COVID-19 breakthrough cases by county of residence¹²

County	Cumulative cases	Cases in previous week
Baker	297	56
Benton	2235	394
Clackamas	8834	1401
Clatsop	481	66
Columbia	649	54
Coos	917	130
Crook	718	144
Curry	211	21
Deschutes	6944	893
Douglas	1977	194
Gilliam	19	1-9
Grant	80	1-9
Harney	116	1-9
Hood River	627	88
Jackson	3713	369
Jefferson	840	240
Josephine	1990	330
Klamath	1111	125

¹² Counties that have a total of fewer than 10 cases will be reported as 1-9 cases.

COVID-19 Breakthrough Report

Oregon's Weekly Surveillance Summary



County	Cumulative cases	Cases in previous week
Lake	99	1-9
Lane	8382	844
Lincoln	966	208
Linn	2352	174
Malheur	480	92
Marion	7804	686
Morrow	210	39
Multnomah	19104	1608
Polk	1752	189
Sherman	27	1-9
Tillamook	576	77
Umatilla	1755	395
Union	444	104
Wallowa	165	27
Wasco	583	87
Washington	9601	1116
Wheeler	27	1-9
Yamhill	2207	399