

# COVID-19 Monthly Report

Oregon's Monthly Data Report



## Monthly Data Report - December 8, 2022

### Table of Contents

Monthly COVID-19 Summary.....	2
Where are we now?.....	3
Background.....	5
Demographics.....	5
Geography.....	5
Sex.....	8
Age.....	10
Race.....	15
Ethnicity.....	19
People with Intellectual and Developmental Disabilities.....	21
Weekly COVID-19 Hospitalizations (HOSCAP).....	22
ZIP code.....	22
Report Limitations.....	22
Additional Information & Available Resources.....	23

# COVID-19 Monthly Report

Oregon's Monthly Data Report



## Monthly COVID-19 Summary

- There were 15,236 reported cases in November, up 13.5 % from 13,427 cases in October.<sup>1</sup>
- Test positivity was 7.8% in November, up from 7.3% in October.
- On December 1, there were 364 COVID-19 positive patients hospitalized, up 48 % from 246 COVID-19 positive patients on December 1, according to Oregon's Hospital Capacity Web System (HOSCAP).
- In November, the statewide reported annualized case rate<sup>2</sup> was 4344 per 100,000 and was highest among the following age groups:
  - 11,496 cases per 100,000 (1,702 total cases) age 80+
  - 6,009 cases per 100,000 (1,829 total cases) age 70-79
  - 4,651 cases per 100,000 (2,010 total cases) age 60-69
- 1,546 cases (10.1% of all cases in November; 2,185 cases per 100,000 per year) were children age 17 years or younger.
- 4,505 cases (29.6% of all cases in November; 6,772 cases per 100,000 per year) were people age 65 years or older.
- As of December 1, 2022, Oregon has reported:
  - 925,392 cases
  - 37,850 hospitalizations (4.0% of all reported cases)
  - 8,883 deaths (1.0% of all reported cases)

---

<sup>1</sup> OHA continually updates information on COVID-19 cases as new information becomes available. This may lead to slight variations in case counts compared to previous reports.

<sup>2</sup> Annualized case rates are calculated by using the number of cases reported in each time period, divided by population, and then multiplied to represent a full year of data. This allows for comparison between time periods of differing lengths.

# COVID-19 Monthly Report

Oregon's Monthly Data Report



**Table 1. Recent COVID-19 cases, hospitalizations, and deaths**

	September 2022	October 2022	November 2022
Cases	18,410	13,427	15,236
Hospitalizations	769	801	896
Deaths	126	127	80

1. Cases are counted using the date that the case was reported to public health. Hospitalizations are counted using the date of hospital admission. Deaths are counted using the date of death. Due to delays in case ascertainment, these data are subject to change.
2. Some hospitalizations and deaths from the most recent month may not yet be reported.

## Where are we now?

COVID-19 transmission in Oregon increased in November. Test positivity increased from 7.3% in October to 7.8% in November. Omicron BA.5 is being supplanted by the newer and more immunity-evading BQ.1 and BQ.1.1 Omicron strains, which may now be predominant in Oregon as well as nationwide. Hospitalizations increased by 1,809 during November, and hospital capacity continues to be strained by a combination of COVID-19 admissions, “routine” hospitalizations and an early rise in respiratory syncytial virus (RSV) infections. At the end of November, adult acute-care bed availability stood at only 5.4% statewide. Pediatric beds are even more constrained by patients with RSV, which disproportionately hospitalizes young children.

The most recent Oregon Health & Science University COVID-19 Forecast (<https://www.ohsu.edu/sites/default/files/2022-12/OHSU-COVID-Forecast-Dec-2-2022.pdf>) predicts COVID-19 hospitalizations will peak around December 12. RSV activity appears to be peaking in Oregon, while influenza has been rising rapidly the past several weeks.

Oregon Health Authority (OHA) encourages people to consider getting both a flu shot and a bivalent COVID-19 booster now. Vaccination is the most effective way to reduce the risk of severe illness, hospitalization and death from these serious respiratory viruses. The bivalent COVID-19 boosters protect against the original COVID-19 virus as well as the Omicron BA.4 and BA.5 subvariants, and they are authorized for people age 5 years and older. Currently, only about 12.8% of Oregonians who are eligible have

# COVID-19 Monthly Report

Oregon's Monthly Data Report



received a bivalent booster. Persons at high risk for severe illness from COVID-19 or influenza are also advised to plan for early medical consultation and treatment: antiviral agents are available for each of these respiratory infections and most effective if taken early.

Data on reported COVID-19 cases, hospitalizations and deaths in Oregon are updated weekly at:

<https://public.tableau.com/app/profile/oregon.health.authority.covid.19/viz/OregonCOVID-19Update/DailyDataUpdate>.

# COVID-19 Monthly Report

Oregon's Monthly Data Report



## Monthly Data Report

### Background

The COVID-19 Monthly Report is published on the second Thursday of each month. Please note that the data reported here are continually updated. For information updated weekly, visit the OHA COVID-19 web page: <https://govstatus.egov.com/OR-OHA-COVID-19>.

### Demographics

The following tables and figures show the demographic characteristics for all reported COVID-19 cases in the last six months.<sup>3</sup> The tables show case counts, annualized case rates and indicators of severity by sex, age, race and ethnicity. The figures show cases over time, by week of onset, for sex, age, race and ethnicity.

### Geography

The following figures show annualized case rates by county during November 2022. Cases are counted according to the date on which the case became known to public health. Figure 1 displays annualized case rates by county compared to the annualized case rate for all of Oregon and the United States. Figure 2 uses a map to represent county-level annualized case rate data.

---

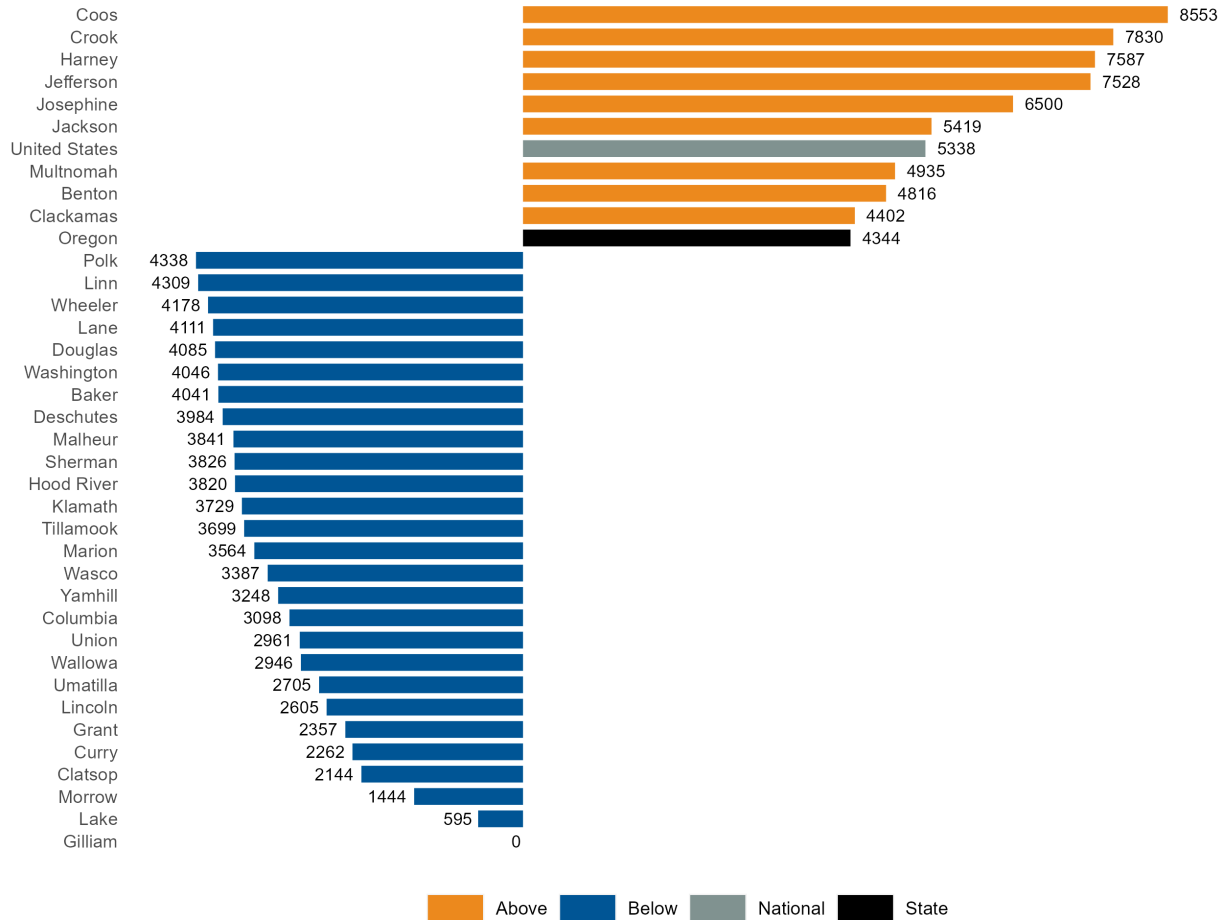
<sup>3</sup> All tables and figures in this report referencing the last six months include data from June 1, 2022, to November 30, 2022.

# COVID-19 Monthly Report

Oregon's Monthly Data Report



**Figure 1. Annualized case rates per 100,000 residents by county compared to state and U.S., November 2022**



1. Annualized case rates are calculated by using the number of cases reported in each time period, divided by population, and then multiplied to represent a full year of data. This allows for comparison between time periods of differing lengths.
2. Counties that had case rates higher than the state's case rate are displayed in orange. Counties that had case rates lower than the state's case rate are displayed in blue.
3. Counties that had zero cases in the time period displayed appear on the list but do not have a bar to display.

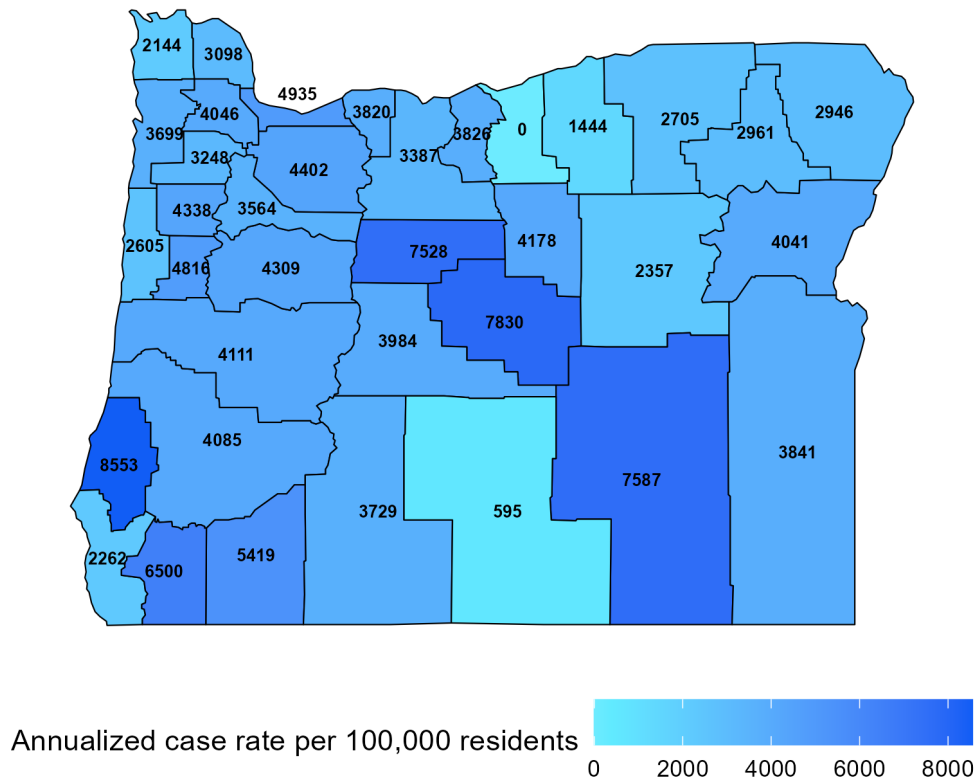
# COVID-19 Monthly Report

Oregon's Monthly Data Report



4. United States rates are calculated by annualizing data based on a 28-day period from the CDC COVID-19 Data Tracker. These data are available at [https://covid.cdc.gov/covid-data-tracker/#trends\\_weeklycases\\_select\\_00](https://covid.cdc.gov/covid-data-tracker/#trends_weeklycases_select_00).
5. Additional data are available at [https://public.tableau.com/app/profile/oregon.health.authority.covid.19/viz/Oregon\\_COVID-19TestingandOutcomesbyCounty/OregonsCOVID-19TestingandOutcomesbyCounty](https://public.tableau.com/app/profile/oregon.health.authority.covid.19/viz/Oregon_COVID-19TestingandOutcomesbyCounty/OregonsCOVID-19TestingandOutcomesbyCounty).

**Figure 2. Map of annualized case rates per 100,000 residents by county, November 2022**



# COVID-19 Monthly Report

Oregon's Monthly Data Report



## Sex

**Table 2a. Severity and rates of COVID-19 by sex, November 2022<sup>4</sup>**

Sex	Cases	% of total cases	Cases per 100,000 per year	Hospitalized	% Hospitalized	Deaths	Case fatality
Female	8,088	53.1	4,573	435	5.4	39	0.5
Male	6,043	39.7	3,476	437	7.2	35	0.6
Non-Binary	14	0.1		0	0.0	1	7.1
Not Available	1,091	7.2		24	2.2	5	0.5
Total	15,236	100.0	4,345	896	5.9	80	0.5

**Table 2b. Severity and rates of COVID-19 by sex in the last six months**

Sex	Cases	% of total cases	Cases per 100,000 per year	Hospitalized	% Hospitalized	Deaths	Case fatality
Female	84,115	53.1	7,798	3,069	3.6	442	0.5
Male	65,449	41.3	6,172	2,948	4.5	471	0.7
Non-Binary	127	0.1		1	0.8	1	0.8
Not Available	8,827	5.6		102	1.2	25	0.3
Total	158,518	100.0	7,410	6,120	3.9	939	0.6

1. Annualized case rates are calculated by using the number of cases reported in each time period, divided by population, and then multiplied to represent a full year of data. This allows for comparison between time periods of differing lengths.
2. Case fatality refers to the percentage of cases reported to have resulted in death within each time period.

<sup>4</sup> There may be a lag of several weeks between when an individual dies and when their death appears in this report. Death counts are calculated using date of death.



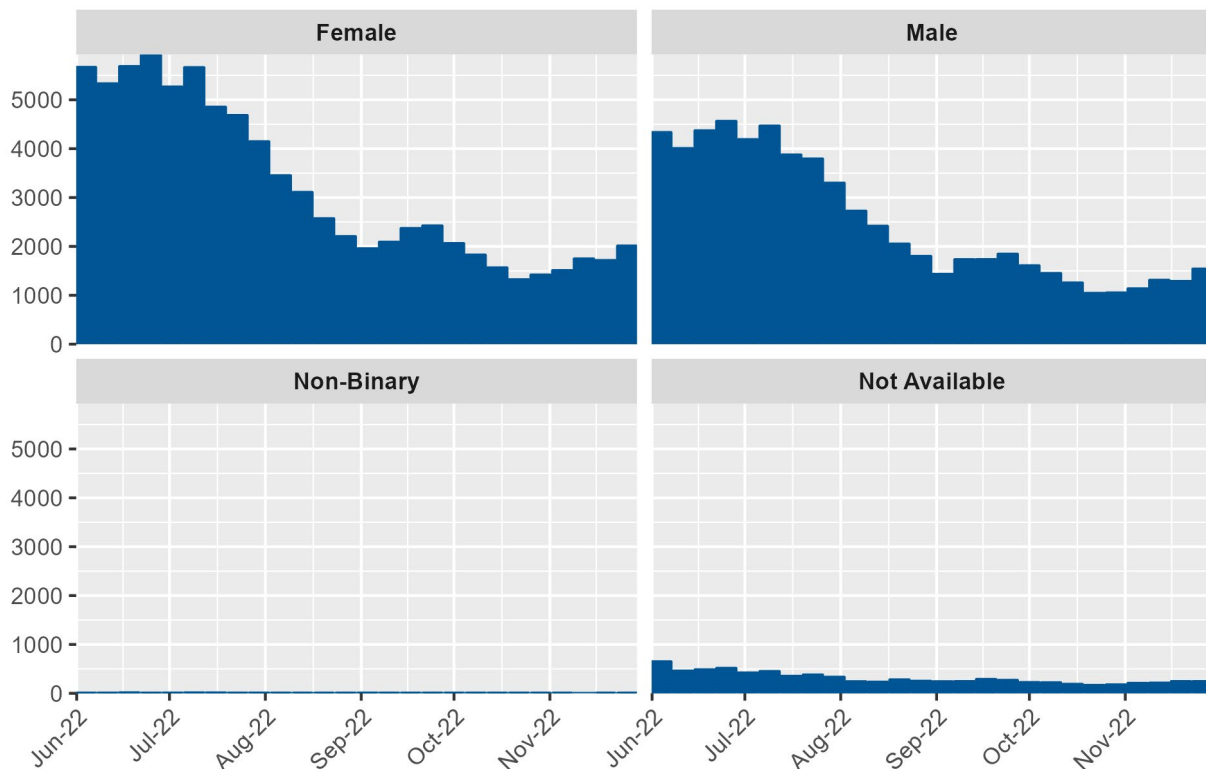
# COVID-19 Monthly Report

Oregon's Monthly Data Report



3. Rates are calculated using population estimates from the 2021 Annual Population Report from Portland State University's College of Urban & Public Affairs Population Research Center and 2020 housing and demographic data from the U.S. Census Bureau's American Community Survey (ACS).
4. Additional data are available at <https://public.tableau.com/app/profile/oregon.health.authority.covid.19/viz/Oregon-COVID-19CaseDemographicsandDiseaseSeverityStatewide/DemographicDataHosp>.

**Figure 3. COVID-19 cases (counts) in the last six months by sex and week of onset**



In this paneled bar graph, COVID-19 case counts by sex are displayed over the past six months. Each panel corresponds with a different sex. The peaks and dips in case counts across sex generally align throughout the past six months. More detailed information on case counts and rates by sex are available at:

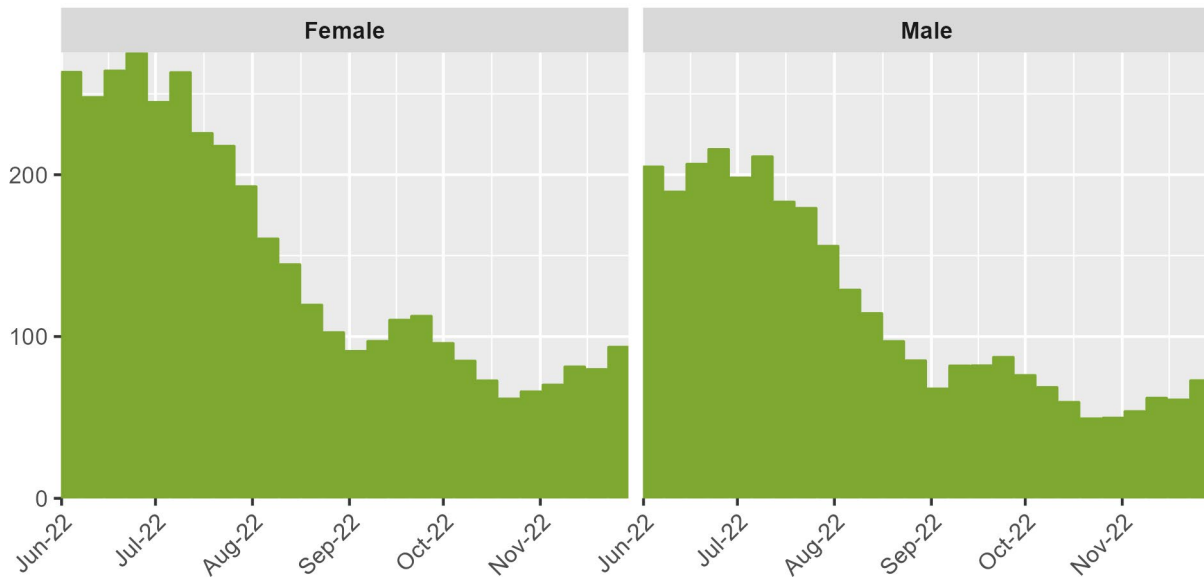
# COVID-19 Monthly Report

Oregon's Monthly Data Report



<https://public.tableau.com/app/profile/oregon.health.authority.covid.19/viz/OregonCOVID-19CaseDemographicsandDiseaseSeverityStatewide/DemographicDataHosp>.

**Figure 4. COVID-19 case rates per 100,000 in the last six months by sex and week of onset**



In this paneled bar graph, COVID-19 case rates per 100,000 by sex are displayed over the past six months. Each panel corresponds with a different sex. The peaks and dips in case rates across sex generally align throughout the past six months. More detailed information on case counts and rates by sex are available at:

<https://public.tableau.com/app/profile/oregon.health.authority.covid.19/viz/OregonCOVID-19CaseDemographicsandDiseaseSeverityStatewide/DemographicDataHosp>.

## Age

**Table 3a. Severity and rates of COVID-19 by age, November 2022**

Age group	Cases	% of total cases	Cases per 100,000 per year	Hospitalized	% Hospitalized	Deaths	Case fatality
0-9	973	6.4	2,540	12	1.2	0	

# COVID-19 Monthly Report

Oregon's Monthly Data Report



Age group	Cases	% of total cases	Cases per 100,000 per year	Hospitalized	% Hospitalized	Deaths	Case fatality
10-19	803	5.3	1,984	14	1.7	0	
20-29	1,873	12.3	4,054	33	1.8	1	0.1
30-39	2,076	13.6	4,146	67	3.2	2	0.1
40-49	1,828	12.0	4,067	51	2.8	2	0.1
50-59	1,855	12.2	4,391	84	4.5	3	0.2
60-69	2,010	13.2	4,651	139	6.9	9	0.4
70-79	1,829	12.0	6,009	210	11.5	19	1.0
80+	1,702	11.2	11,496	273	16.0	44	2.6
Not Available	287	1.9		13	4.5	0	
Total	15,236	100.0	4,345	896	5.9	80	0.5

**Table 3b. Severity and rates of COVID-19 by age in the last six months**

Age group	Cases	% of total cases	Cases per 100,000 per year	Hospitalized	% Hospitalized	Deaths	Case fatality
0-9	11,145	7.0	4,769	116	1.0	0	
10-19	10,249	6.5	4,152	85	0.8	0	
20-29	21,583	13.6	7,658	318	1.5	9	0.0
30-39	24,329	15.3	7,967	435	1.8	8	0.0
40-49	20,889	13.2	7,619	395	1.9	22	0.1
50-59	20,009	12.6	7,766	587	2.9	49	0.2
60-69	20,117	12.7	7,632	1,031	5.1	102	0.5
70-79	17,215	10.9	9,272	1,409	8.2	202	1.2
80+	11,610	7.3	12,856	1,713	14.8	546	4.7

# COVID-19 Monthly Report

Oregon's Monthly Data Report



Age group	Cases	% of total cases	Cases per 100,000 per year	Hospitalized	% Hospitalized	Deaths	Case fatality
Not Available	1,372	0.9		31	2.3	1	0.1
Total	158,518	100.0	7,410	6,120	3.9	939	0.6

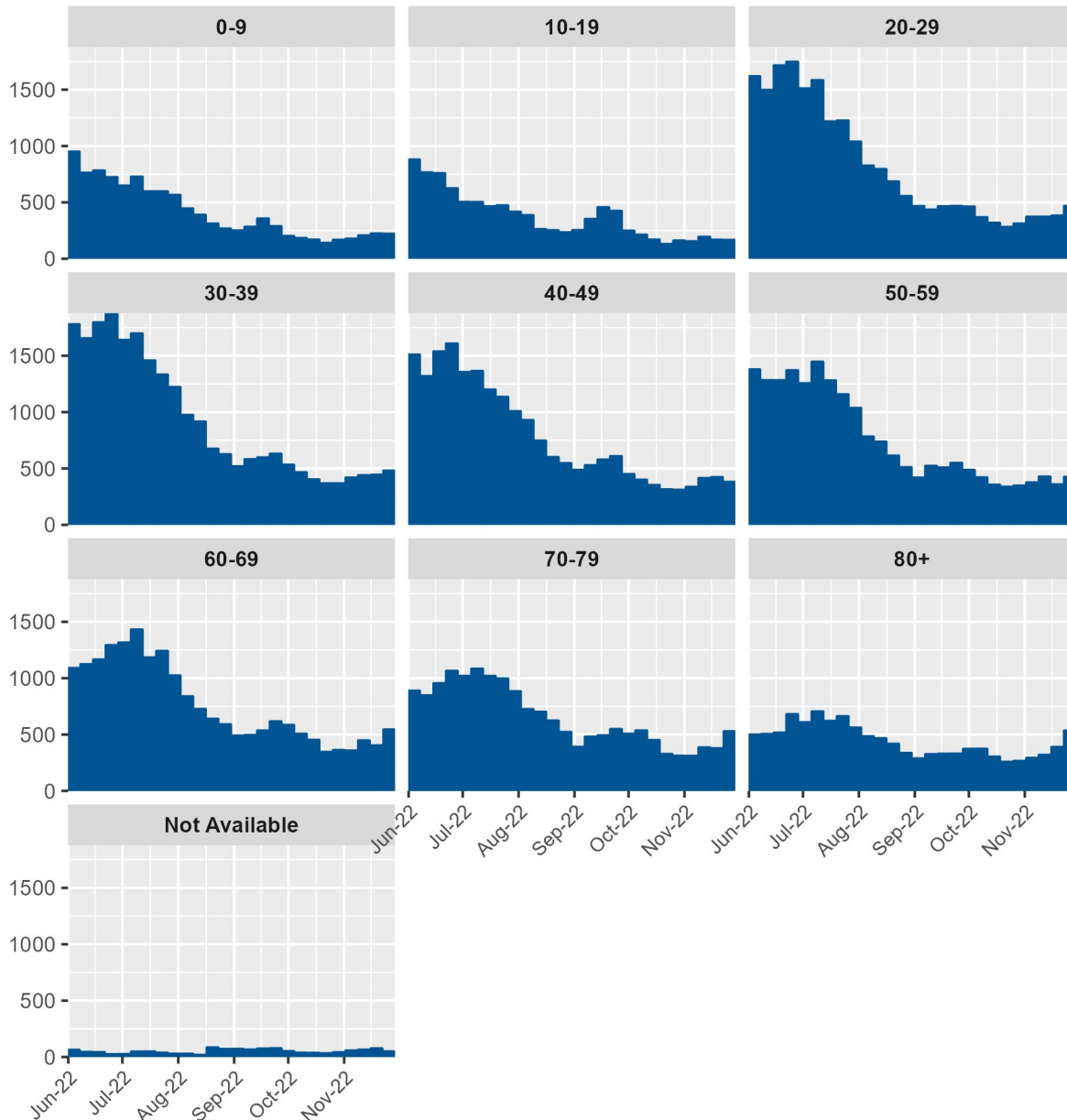
1. Annualized case rates are calculated by using the number of cases reported in each time period, divided by population, and then multiplied to represent a full year of data. This allows for comparison between time periods of differing lengths.
2. Case fatality refers to the percentage of cases reported to have died within each time period.
3. Rates are calculated using population estimates from the 2021 Annual Population Report from Portland State University's College of Urban & Public Affairs Population Research Center and 2020 housing and demographic data from the U.S. Census Bureau's American Community Survey (ACS).
4. Additional data are available at <https://public.tableau.com/app/profile/oregon.health.authority.covid.19/viz/Oregon-COVID-19CaseDemographicsandDiseaseSeverityStatewide/DemographicDataHosp;> and [https://public.tableau.com/app/profile/oregon.health.authority.covid.19/viz/Oregon-COVID-19CaseDemographicsandDiseaseSeverityStatewide/SeverityTrends.](https://public.tableau.com/app/profile/oregon.health.authority.covid.19/viz/Oregon-COVID-19CaseDemographicsandDiseaseSeverityStatewide/SeverityTrends)

# COVID-19 Monthly Report

Oregon's Monthly Data Report



**Figure 5. COVID-19 cases (counts) in the last six months by age and week of onset**



In this paneled bar graph, COVID-19 case counts by age are displayed over the past six months. Each panel corresponds with a different age group. The peaks and dips in case

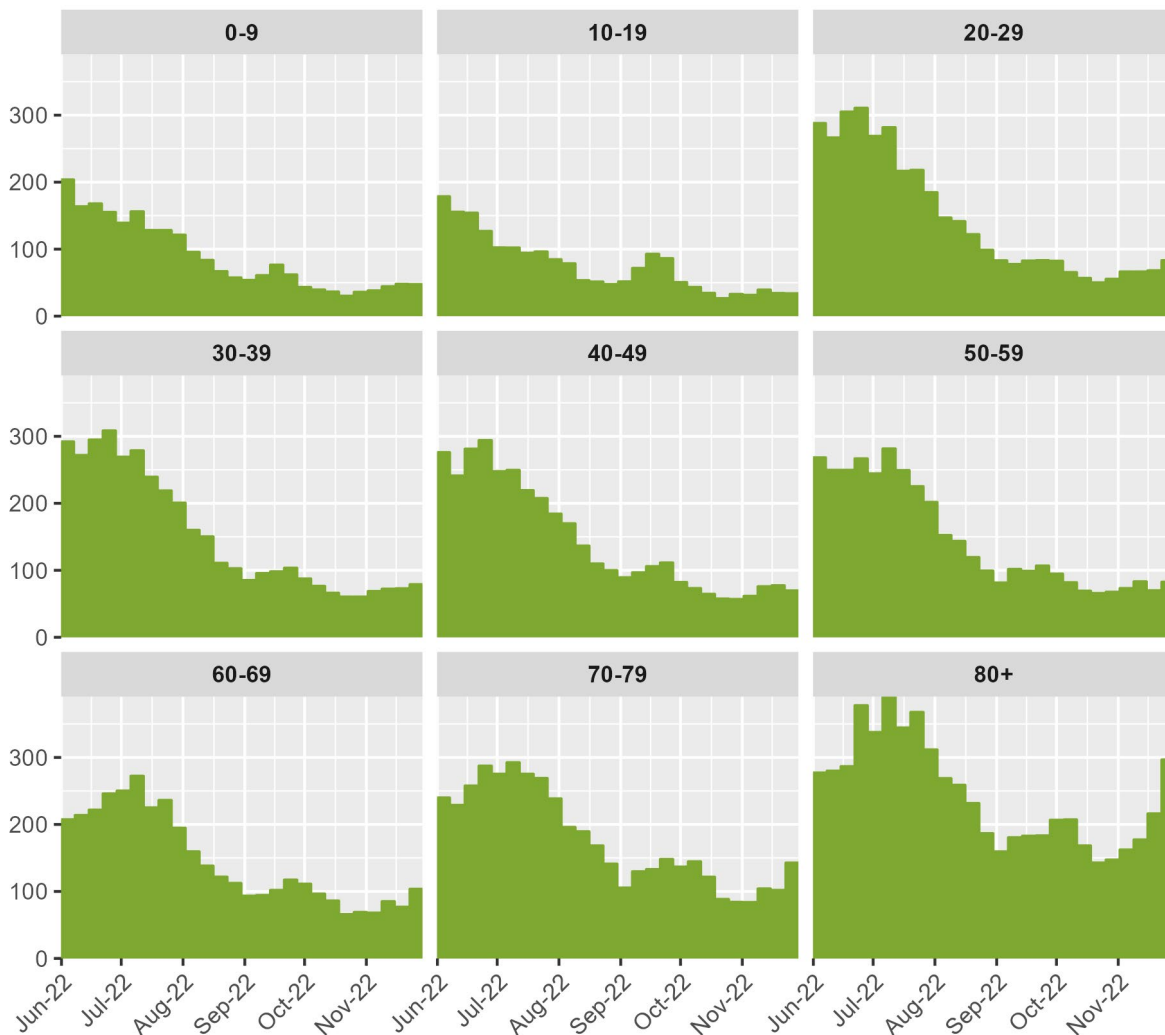
# COVID-19 Monthly Report

Oregon's Monthly Data Report



counts across age generally align throughout the past six months. More detailed information on case counts and rates by age are available at: <https://public.tableau.com/app/profile/oregon.health.authority.covid.19/viz/OregonCOVID-19CaseDemographicsandDiseaseSeverityStatewide/DemographicDataHosp>.

**Figure 6. COVID-19 case rates per 100,000 in the last six months by age and week of onset**



In this paneled bar graph, COVID-19 case rates per 100,000 by age are displayed over the past six months. Each panel corresponds with a different age group. The peaks and

# COVID-19 Monthly Report

Oregon's Monthly Data Report



dips in case rates across age generally align throughout the past six months. More detailed information on case counts and rates by age are available at: <https://public.tableau.com/app/profile/oregon.health.authority.covid.19/viz/OregonCOVID-19CaseDemographicsandDiseaseSeverityStatewide/DemographicDataHosp>.

## Race

**Table 4a. Severity and rates of COVID-19 by race, November 2022**

Race	Cases	% of total cases	Cases per 100,000 per year	Hospitalized	% Hospitalized	Deaths	Case fatality
> 1 race	107	0.7	494	5	4.7	0	
American Indian/Alaska Native	203	1.3	5,292	5	2.5	1	0.5
Asian	460	3.0	2,918	26	5.7	2	0.4
Black	332	2.2	4,998	27	8.1	0	
Not Available	5,242	34.4		122	2.3	17	0.3
Other	924	6.1		53	5.7	1	0.1
Pacific Islander	30	0.2	2,173	1	3.3	0	
White	7,938	52.1	2,741	657	8.3	59	0.7
Total	15,236	100.0	4,345	896	5.9	80	0.5

**Table 4b. Severity and rates of COVID-19 by race in the last six months**

Race	Cases	% of total cases	Cases per 100,000 per year	Hospitalized	% Hospitalized	Deaths	Case fatality
> 1 race	2,074	1.3	1,570	31	1.5	5	0.2
American Indian/Alaska Native	1,802	1.1	7,701	55	3.1	6	0.3

# COVID-19 Monthly Report

Oregon's Monthly Data Report



Race	Cases	% of total cases	Cases per 100,000 per year	Hospitalized	% Hospitalized	Deaths	Case fatality
Asian	5,934	3.7	6,169	172	2.9	16	0.3
Black	3,104	2.0	7,660	168	5.4	11	0.4
Not Available	49,978	31.5		773	1.5	278	0.6
Other	10,630	6.7		363	3.4	34	0.3
Pacific Islander	184	0.1	2,184	8	4.3	1	0.5
White	84,812	53.5	4,801	4,550	5.4	588	0.7
Total	158,518	100.0	7,410	6,120	3.9	939	0.6

1. Annualized case rates are calculated by using the number of cases reported in each time period, divided by population, and then multiplied to represent a full year of data. This allows for comparison between time periods of differing lengths.
2. Case fatality refers to the percentage of cases reported to have died within each time period.
3. People are asked to self-report their race, ethnicity, tribal affiliation, country of origin or ancestry.
4. Rates are calculated using population estimates from the 2021 Annual Population Report from Portland State University's College of Urban & Public Affairs Population Research Center and 2020 housing and demographic data from the U.S. Census Bureau's American Community Survey (ACS).
5. Persons for whom race information was not available were not included in these estimates. The number of persons with unavailable race data can be found in Tables 4a and 4b.
6. 5,077 (47.8%) of the 10,630 persons who identify as "Other" race also self-identify as Hispanic or Latino.
7. Additional data are available at <https://public.tableau.com/app/profile/oregon.health.authority.covid.19/viz/Oregon-COVID-19CaseDemographicsandDiseaseSeverityStatewide/DemographicDataHosp;> and



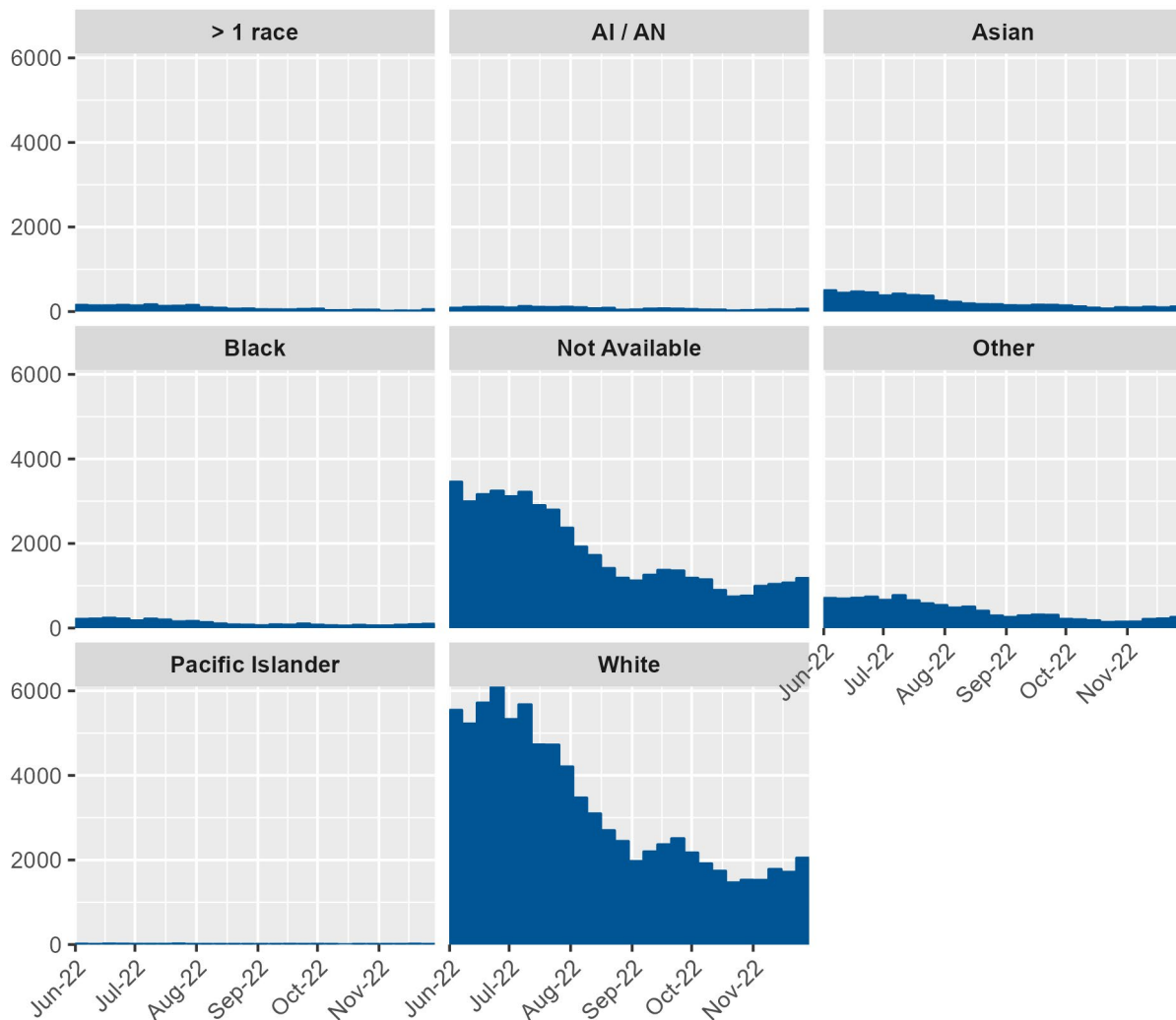
# COVID-19 Monthly Report

Oregon's Monthly Data Report



<https://public.tableau.com/app/profile/oregon.health.authority.covid.19/viz/Oregon-COVID-19CaseDemographicsandDiseaseSeverityStatewide/SeverityTrends>

**Figure 7. COVID-19 cases (counts) in the last six months by race and week of onset**



In this paneled bar graph, COVID-19 case counts by race are displayed over the past six months. Each panel corresponds with a different race. The peaks and dips in case counts across race generally align throughout the past six months. More detailed information on case counts and rates by race are available at:

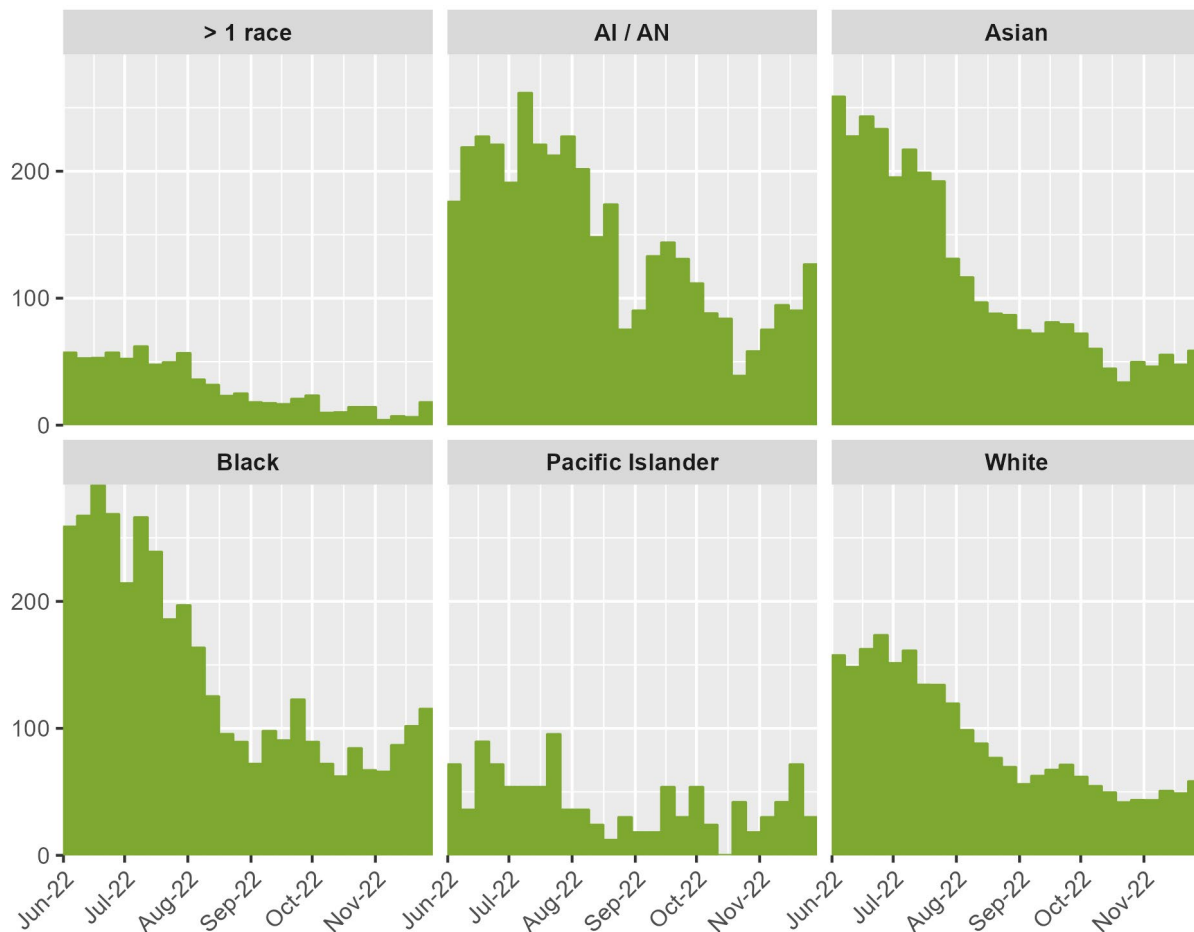
# COVID-19 Monthly Report

Oregon's Monthly Data Report



<https://public.tableau.com/app/profile/oregon.health.authority.covid.19/viz/OregonCOVID-19CaseDemographicsandDiseaseSeverityStatewide/DemographicDataHosp>

**Figure 8. COVID-19 case rates per 100,000 in the last six months by race and week of onset**



In this paneled bar graph, COVID-19 case rates per 100,000 by race are displayed over the past six months. Each panel corresponds with a different race. The peaks and dips in case rates across race generally align throughout the past six months, with case rates tending to be highest for American Indian or Alaska Native persons, Asian persons and Black, African and African American persons. Case rates tend to be lowest among Pacific Islander persons, White persons and Multiracial persons. More detailed information on case counts and rates by race are available at:

# COVID-19 Monthly Report

Oregon's Monthly Data Report



<https://public.tableau.com/app/profile/oregon.health.authority.covid.19/viz/OregonCOVID-19CaseDemographicsandDiseaseSeverityStatewide/DemographicDataHosp>.

## Ethnicity

**Table 5a. Severity and rates of COVID-19 by ethnicity, November 2022**

Ethnicity	Cases	% of total cases	Cases per 100,000 per year	Hospitalized	% Hospitalized	Deaths	Case fatality
Hispanic	897	5.9	1,934	42	4.7	0	
Not Hispanic	7,307	48.0	2,402	665	9.1	47	0.6
Unknown	7,032	46.2		189	2.7	33	0.5
Total	15,236	100.0	4,345	896	5.9	80	0.5

**Table 5b. Severity and rates of COVID-19 by ethnicity in the last six months**

Ethnicity	Cases	% of total cases	Cases per 100,000 per year	Hospitalized	% Hospitalized	Deaths	Case fatality
Hispanic	11,001	6.9	3,889	301	2.7	14	0.1
Not Hispanic	80,829	51.0	4,354	4,574	5.7	510	0.6
Unknown	66,688	42.1		1,245	1.9	415	0.6
Total	158,518	100.0	7,410	6,120	3.9	939	0.6

1. Annualized case rates are calculated by using the number of cases reported in each time period, divided by population, and then multiplied to represent a full year of data. This allows for comparison between time periods of differing lengths.
2. Case fatality refers to the percentage of cases reported to have died within each time period.
3. Rates are calculated using population estimates from the 2021 Annual Population Report from Portland State University's College of Urban & Public

# COVID-19 Monthly Report

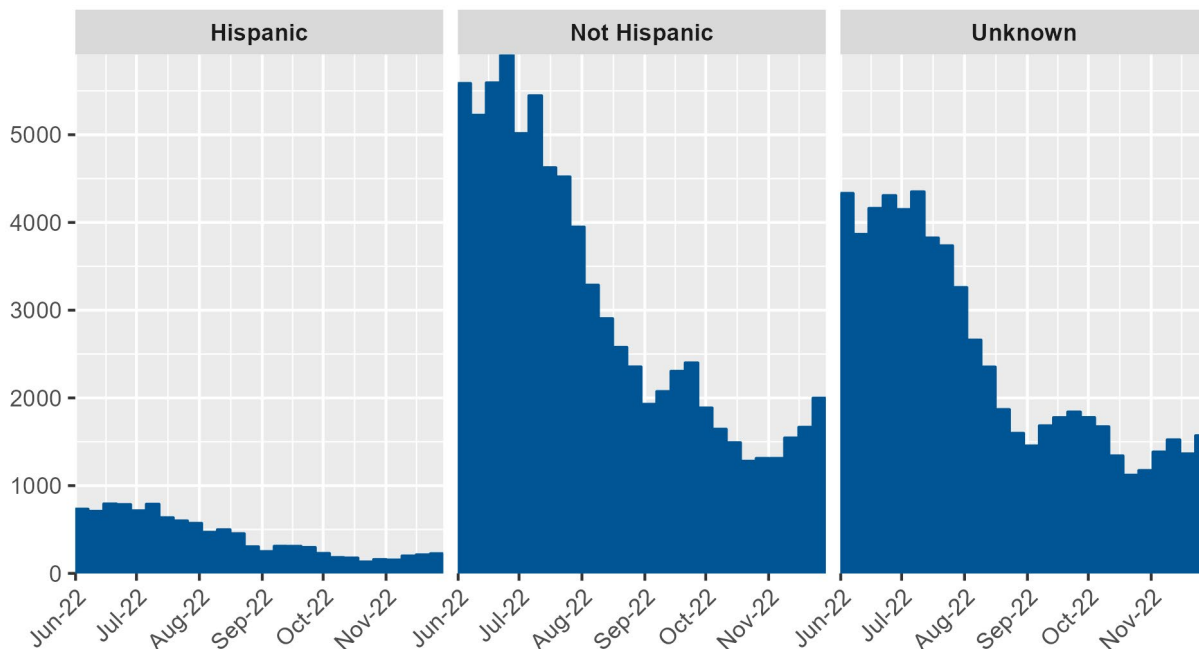
Oregon's Monthly Data Report



Affairs Population Research Center and 2020 housing and demographic data from the U.S. Census Bureau's American Community Survey (ACS).

- Additional data are available at <https://public.tableau.com/app/profile/oregon.health.authority.covid.19/viz/OregonCOVID-19CaseDemographicsandDiseaseSeverityStatewide/DemographicDataHosp>; and <https://public.tableau.com/app/profile/oregon.health.authority.covid.19/viz/OregonCOVID-19CaseDemographicsandDiseaseSeverityStatewide/SeverityTrends>.

**Figure 9. COVID-19 cases (counts) in the last six months by ethnicity and week of onset**



In this paneled bar graph, COVID-19 case counts by ethnicity are displayed over the past six months. Each panel corresponds with a different ethnicity. The peaks and dips in case counts across ethnicity generally align throughout the past six months. More detailed information on case counts and rates by ethnicity are available at:

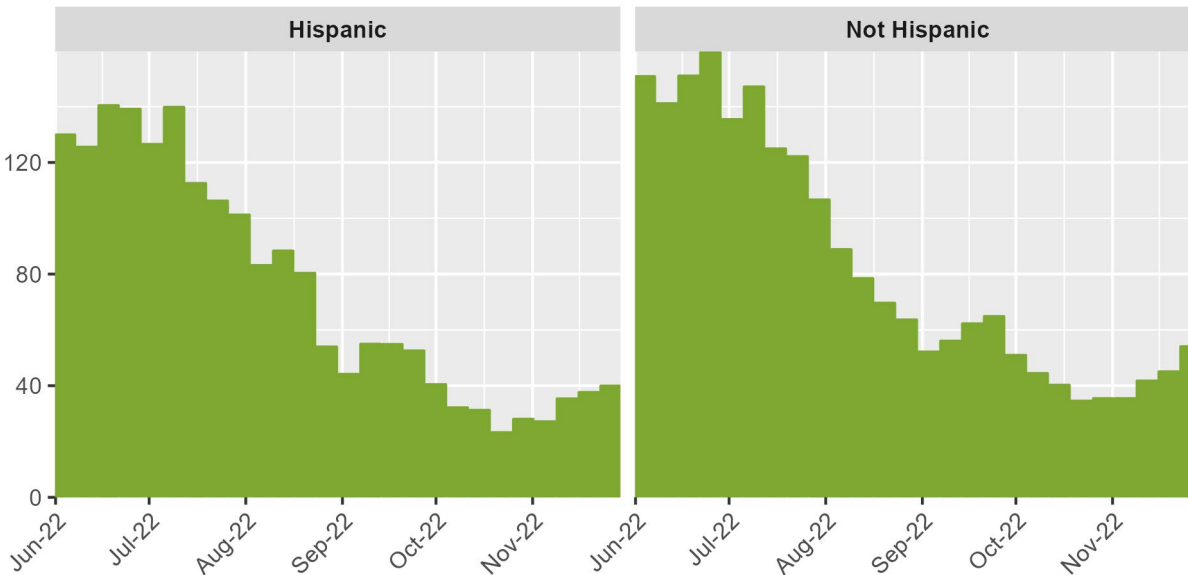
<https://public.tableau.com/app/profile/oregon.health.authority.covid.19/viz/OregonCOVID-19CaseDemographicsandDiseaseSeverityStatewide/DemographicDataHosp>.

# COVID-19 Monthly Report

Oregon's Monthly Data Report



**Figure 10. COVID-19 case rates per 100,000 in the last six months by ethnicity and week of onset**



In this paneled bar graph, COVID-19 case rates per 100,000 by ethnicity are displayed over the past six months. Each panel corresponds with a different ethnicity. The peaks and dips in case rates across ethnicity generally align throughout the past six months. More detailed information on case counts and rates by ethnicity are available at: <https://public.tableau.com/app/profile/oregon.health.authority.covid.19/viz/OregonCOVID-19CaseDemographicsandDiseaseSeverityStatewide/DemographicDataHosp>.

## People with Intellectual and Developmental Disabilities

As of June 6, 2022, OHA is aware of 4,655 people with intellectual or developmental disabilities who have had COVID-19 to date. This includes individuals who live in congregate settings and in family or individual homes. To date, there are 62 deaths among people with intellectual or developmental disabilities. This number is from conducting a match between the Oregon Department of Human Services Office of Developmental Disabilities Services (ODDS) client list and the Oregon COVID-19 case database. OHA will update this number on a quarterly basis.

# COVID-19 Monthly Report

Oregon's Monthly Data Report



Additional information about the ODDS program and COVID-19 can be found here: <https://www.oregon.gov/dhs/SENIORS-DISABILITIES/DD/ODDS%20Resource%20Library/ODDS-Residential-COVID-19-Report.pdf>.

ODDS data are based on self-reports from providers and case management entities and therefore may differ from testing data received from OHA.

## Weekly COVID-19 Hospitalizations (HOSCAP)

OHA is publishing data on the number of COVID-19 hospitalizations by hospital in the prior week; data are from HOSCAP. Maps and tables containing the 7-day average of hospitalizations by region and hospital are available online at:

<https://public.tableau.com/app/profile/oregon.health.authority.covid.19/viz/OregonCOVID-19HospitalCapacity/HospitalizationbyFacility>.

Information on Oregon's current hospital bed capacity by region is available online at: <https://public.tableau.com/app/profile/oregon.health.authority.covid.19/viz/OregonCOVID-19HospitalCapacity/BedAvailabilitybyRegion>.

## ZIP code

OHA publishes data on cases by ZIP code, available online at:

<https://public.tableau.com/profile/oregon.health.authority.covid.19#!/vizhome/OregonCOVID-19CasesbyZIPCode/OregonsCOVID-19CasesbyZipCode>.

Summary table of all ZIP codes are available here:

<https://public.tableau.com/profile/oregon.health.authority.covid.19#!/vizhome/OregonCOVID-19CasesbyZIPCode-SummaryTable/CasesbyZIPCodeSummaryTable>.

## Report Limitations

These data represent a snapshot of reported COVID-19 cases, and they include data on cases with pending investigations. The data shown in this report come from Oregon's electronic reportable disease surveillance system. Not all reported cases have been interviewed. In January 2022, public health case investigation and contact tracing operations were changed to prioritize responding to outbreaks in high-consequence settings, such as health care, congregate care (e.g., nursing homes), carceral settings

# COVID-19 Monthly Report

Oregon's Monthly Data Report



and settings related to our food chain. Public health is no longer calling all cases to attempt to interview to assess hospitalization status, symptoms and risks.

## Additional Information & Available Resources

Vaccination is the best way to prevent severe illness, hospitalization and death from COVID-19. For more information about COVID-19 vaccines, visit:

<https://covidvaccine.oregon.gov>.

The CDC recommends everyone age 5 and older who completed their COVID-19 primary vaccination series get a bivalent booster dose. For more information about COVID-19 vaccine booster eligibility, visit: [www.cdc.gov/coronavirus/2019-ncov/vaccines/booster-shot.html](http://www.cdc.gov/coronavirus/2019-ncov/vaccines/booster-shot.html) and <https://govstatus.egov.com/or-oha-booster-covid-19-vaccine>.

### How do I find a COVID-19 vaccine or booster?

Visit [Vaccines.gov](https://vaccines.gov).

### Where can I find a COVID-19 testing site?

Visit [Covid.gov/tests](https://covid.gov/tests).

### What should I do if I or a member of my household was exposed or test positive for COVID-19?

If you test positive with COVID-19 and have questions or need assistance, contact your health care provider for guidance. If you don't have a health care provider, contact your local public health authority or call 211 for help finding one.

### How can I get treatment to prevent severe symptoms of COVID-19?

Treatment for COVID-19 is now widely available. Many effective treatments exist, and most work best if taken within five days of onset. Find treatment options for yourself and others at: <https://govstatus.egov.com/or-oha-covid-19-treatments>.

### Who can I talk to if I need help?

# COVID-19 Monthly Report

Oregon's Monthly Data Report



Dial 2-1-1 for help with testing, vaccines or general questions. You may also be able to find assistance covering COVID-19-related expenses through your local county public health department.

## What other COVID-19 data are available?

Data on mortality in Oregon, including deaths associated with COVID-19 are available at <https://public.tableau.com/app/profile/oha.center.for.health.statistics>.

Additional data on age and disease severity of people diagnosed with COVID-19 are available at <https://public.tableau.com/app/profile/oregon.health.authority.covid.19/viz/OregonCOVID-19CaseDemographicsandDiseaseSeverityStatewide/DiseaseSeverity>.

Additional data on cases of COVID-19 by hospitalization status over time are available at <https://public.tableau.com/app/profile/oregon.health.authority.covid.19/viz/OregonHealthAuthorityCOVID-19DataDashboard/COVID-19EPICases>.

Additional information on cases of COVID-19 by county are available at <https://public.tableau.com/app/profile/oregon.health.authority.covid.19/viz/OregonCOVID-19Update/DailyDataUpdate>; and at <https://public.tableau.com/app/profile/oregon.health.authority.covid.19/viz/OregonCOVID-19TestingandOutcomesbyCounty/OregonsCOVID-19TestingandOutcomesbyCounty>.

**Document accessibility:** For individuals with disabilities or individuals who speak a language other than English, OHA can provide information in alternate formats such as translations, large print, or braille. Contact the Health Information Center at 1-971-673-2411, 711 TTY or [COVID19.LanguageAccess@dhs.oha.state.or.us](mailto:COVID19.LanguageAccess@dhs.oha.state.or.us).