

# COVID-19 Quarterly Report

Oregon's Quarterly Data Report



## Quarterly Data Report - January 12, 2023

### Table of Contents

Quarterly COVID-19 Summary.....	2
Where are we now?.....	3
Background.....	5
Demographics.....	5
Geography.....	5
Sex.....	8
Age.....	10
Race.....	15
Ethnicity.....	19
People with Intellectual and Developmental Disabilities.....	21
Weekly COVID-19 Hospitalizations (HOSCAP).....	22
ZIP code.....	22
Report Limitations.....	22
Additional Information & Available Resources.....	23

# COVID-19 Quarterly Report

Oregon's Quarterly Data Report



## Quarterly COVID-19 Summary

- There were 15,830 reported cases in December, up 4.1 % from 15,207 cases in November.<sup>1</sup>
- Test positivity was 9.5% in December, up from 7.9% in November.
- On Jan. 1, there were 337 COVID-19-positive patients hospitalized, down 7.4% from 364 on Dec. 1, according to Oregon's Hospital Capacity Web System (HOSCAP).
- In December, the statewide reported annualized case rate<sup>2</sup> was 4,368 per 100,000 and was highest among the following age groups:
  - 13,662 cases per 100,000 (2,090 total cases) age 80+
  - 6,943 cases per 100,000 (2,184 total cases) ages 70-79
  - 4,865 cases per 100,000 (2,172 total cases) ages 60-69
- 1,442 cases (9.1% of all cases in December; 1,972 cases per 100,000 per year) were children ages 17 or younger.
- 5,411 cases (34.2% of all cases in December; 7,872 cases per 100,000 per year) were people ages 65 or older.
- As of Jan. 1, 2023, Oregon has reported:
  - 941,179 cases
  - 38,834 hospitalizations (4.0% of all reported cases)
  - 9,014 deaths (1.0% of all reported cases)

---

<sup>1</sup> OHA continually updates information on COVID-19 cases as new information becomes available. This may lead to slight variations in case counts compared to previous reports.

<sup>2</sup> Annualized case rates are calculated by using the number of cases reported in each time period, divided by population, and then multiplied to represent a full year of data. This allows for comparison between time periods of differing lengths.

# COVID-19 Quarterly Report

Oregon's Quarterly Data Report



**Table 1. Recent COVID-19 cases, hospitalizations and deaths**

	October 2022	November 2022	December 2022
Cases	13,422	15,207	15,830
Hospitalizations	804	952	913
Deaths	130	110	92

1. Cases are counted using the date the case was reported to public health. Hospitalizations are counted using the date of hospital admission. Deaths are counted using the date of death. Due to delays in case ascertainment, these data are subject to change.
2. Some hospitalizations and deaths from the most recent month may not yet be reported.

## Where are we now?

COVID-19 transmission in Oregon increased in December. Test positivity increased from 7.9% in November to 9.5% in December. Omicron BA.5 was largely supplanted by the newer and more immunity-evading Omicron BQ.1 and BQ.1.1 strains. Omicron XBB and XBB.1.5 strains have been sighted here, and they are expected to dominate in the coming weeks. Hospitalizations decreased slightly—from 952 in November to 913 in December, but hospital capacity continues to be strained by a combination of COVID-19 admissions, “routine” hospitalizations, respiratory syncytial virus (RSV) infections and influenza (which appears to have peaked during the week of Dec. 4–10 but circulated at relatively high levels throughout the month). At the end of December, adult acute-care bed availability stood at only 5.1% statewide.

The most recent Oregon Health & Science University COVID-19 Forecast ([www.ohsu.edu/sites/default/files/2023-01/Oregon-Hospital-Forecast-1-6-2023.pdf](http://www.ohsu.edu/sites/default/files/2023-01/Oregon-Hospital-Forecast-1-6-2023.pdf)) predicts a plateau in COVID-19 hospitalizations through January, followed by slowly declining numbers in February. RSV and influenza hospitalizations are expected to fall rapidly during this time.

Oregon Health Authority (OHA) encourages people to consider getting both a flu shot and a bivalent COVID-19 booster now. Vaccination is the most effective way to reduce the risk of severe illness, hospitalization and death from these serious respiratory viruses. The bivalent COVID-19 boosters protect against the original COVID-19 virus as well as the Omicron BA.4 and BA.5 subvariants, and they are expected to offer

# COVID-19 Quarterly Report

Oregon's Quarterly Data Report



protection against severe disease from other Omicron variants such as BQ.1.1 and the more recent XBB and XBB.1.5. The bivalent boosters are now authorized for all vaccinated people age 5 years and older, as well as children 6 months through 4 years who completed the Moderna COVID-19 vaccine primary series. Persons at high risk for severe illness from COVID-19 or influenza are also advised to plan for early medical consultation and treatment: antiviral agents are available for both of these respiratory infections and most effective if taken early.

Data on reported COVID-19 cases, hospitalizations and deaths in Oregon are updated weekly at:

<https://public.tableau.com/app/profile/oregon.health.authority.covid.19/viz/OregonCOVID-19Update/DailyDataUpdate>.

# COVID-19 Quarterly Report

Oregon's Quarterly Data Report



## Quarterly Data Report

### Background

The COVID-19 Quarterly Report is published on the second Thursday of each quarter. Please note that the data reported here are continually updated. For information updated weekly, visit the OHA COVID-19 web page: <https://govstatus.egov.com/OR-OHA-COVID-19>.

### Demographics

The following tables and figures show the demographic characteristics for all reported COVID-19 cases in the last six months.<sup>3</sup> The tables show case counts, annualized case rates and indicators of severity by sex, age, race and ethnicity. The figures show cases over time, by week of onset, for sex, age, race and ethnicity.

### Geography

The following figures show annualized case rates by county during December 2022. Cases are counted according to the date on which the case became known to public health. Figure 1 displays annualized case rates by county compared to the annualized case rate for all of Oregon and the United States. Figure 2 uses a map to represent county-level annualized case rate data.

---

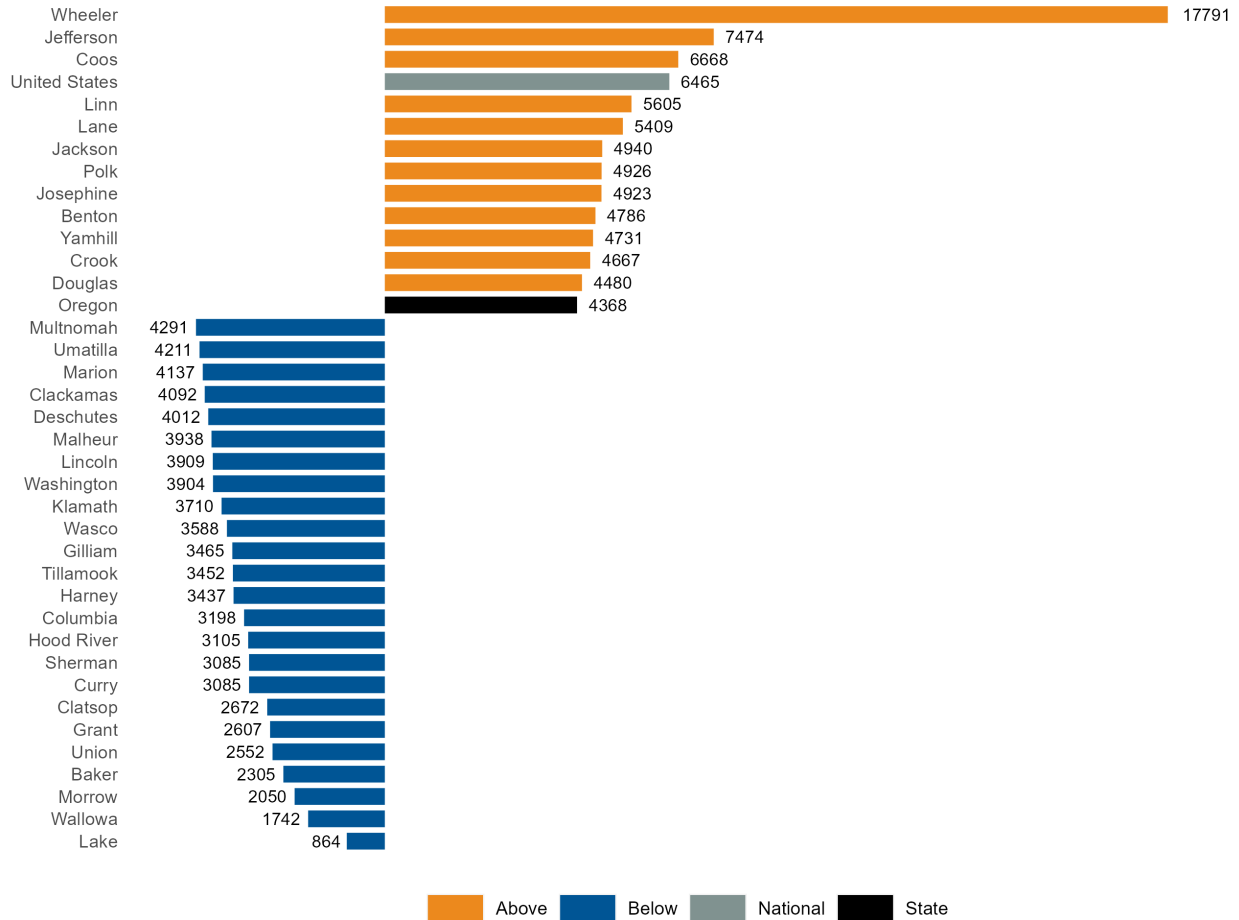
<sup>3</sup> All tables and figures in this report referencing the last six months include data from July 1, 2022, to Dec. 31, 2022.

# COVID-19 Quarterly Report

Oregon's Quarterly Data Report



**Figure 1. Annualized case rates per 100,000 residents by county compared to state and U.S., Dec. 2022**



1. Annualized case rates are calculated by using the number of cases reported in each time period, divided by population, then multiplied to represent a full year of data. This allows for comparison between time periods of differing lengths.
2. Counties that had case rates higher than the state's case rate are displayed in orange. Counties that had case rates lower than the state's case rate are displayed in blue.
3. Counties that had zero cases in the time period displayed appear on the list but do not have a bar to display.

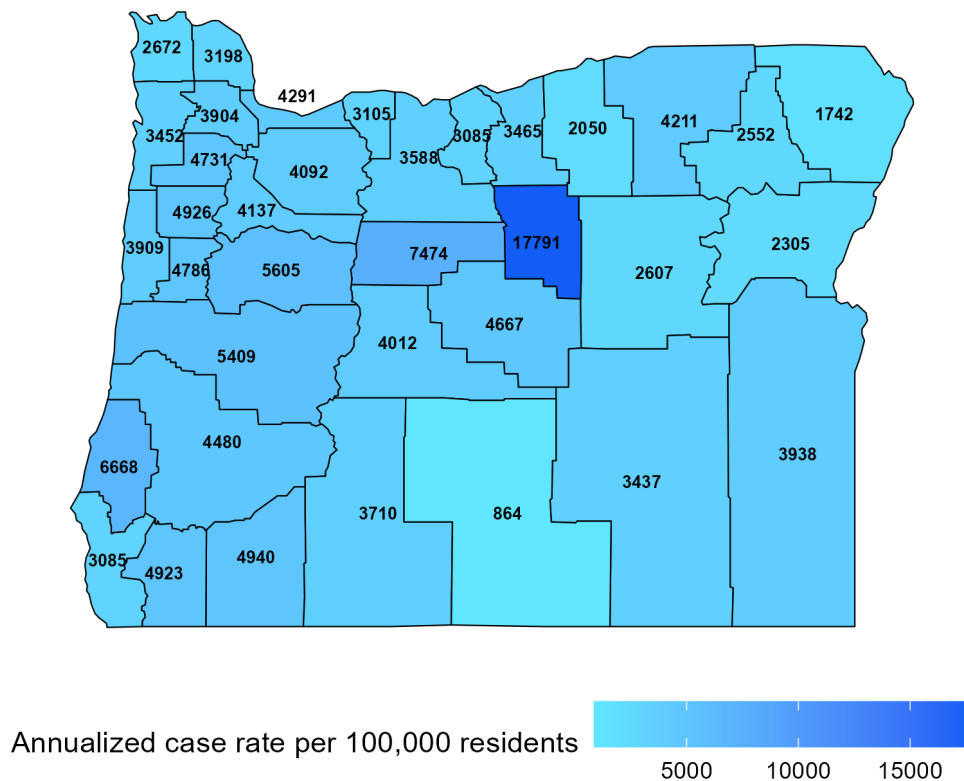
# COVID-19 Quarterly Report

Oregon's Quarterly Data Report



4. United States rates are calculated by annualizing data based on a 28-day period from the CDC COVID-19 Data Tracker. These data are available at [https://covid.cdc.gov/covid-data-tracker/#trends weeklycases select 00](https://covid.cdc.gov/covid-data-tracker/#trends_weeklycases_select_00).
5. Additional data are available at [https://public.tableau.com/app/profile/oregon.health.authority.covid.19/viz/Oregon COVID-19TestingandOutcomesbyCounty/OregonsCOVID-19TestingandOutcomesbyCounty](https://public.tableau.com/app/profile/oregon.health.authority.covid.19/viz/Oregon_COVID-19TestingandOutcomesbyCounty/OregonsCOVID-19TestingandOutcomesbyCounty).

Figure 2. Map of annualized case rates per 100,000 residents by county, Dec. 2022



# COVID-19 Quarterly Report

Oregon's Quarterly Data Report



## Sex

**Table 2a. Severity and rates of COVID-19 by sex, Dec. 2022<sup>4</sup>**

Sex	Cases	% of total cases	Cases per 100,000 per year	Hospitalized	% Hospitalized	Deaths	Case fatality
Female	8,361	52.8	4,575	441	5.3	43	0.5
Male	6,545	41.3	3,643	458	7.0	47	0.7
Non-Binary	17	0.1		0	0.0	0	
Not Available	907	5.7		14	1.5	2	0.2
Total	15,830	100.0	4,368	913	5.8	92	0.6

**Table 2b. Severity and rates of COVID-19 by sex in the last six months**

Sex	Cases	% of total cases	Cases per 100,000 per year	Hospitalized	% Hospitalized	Deaths	Case fatality
Female	67,937	52.9	6,264	2,940	4.3	416	0.6
Male	53,193	41.4	4,989	2,854	5.4	446	0.8
Non-Binary	114	0.1		1	0.9	1	0.9
Not Available	7,166	5.6		101	1.4	26	0.4
Total	128,410	100.0	5,970	5,896	4.6	889	0.7

1. Annualized case rates are calculated by using the number of cases reported in each time period, divided by population, then multiplied to represent a full year of data. This allows for comparison between time periods of differing lengths.
2. Case fatality refers to the percentage of cases reported to have resulted in death within each time period.
3. Rates are calculated using population estimates from the 2021 Annual Population Report from Portland State University's College of Urban & Public

<sup>4</sup> There may be a lag of several weeks between when an individual dies and when their death appears in this report. Death counts are calculated using date of death.



# COVID-19 Quarterly Report

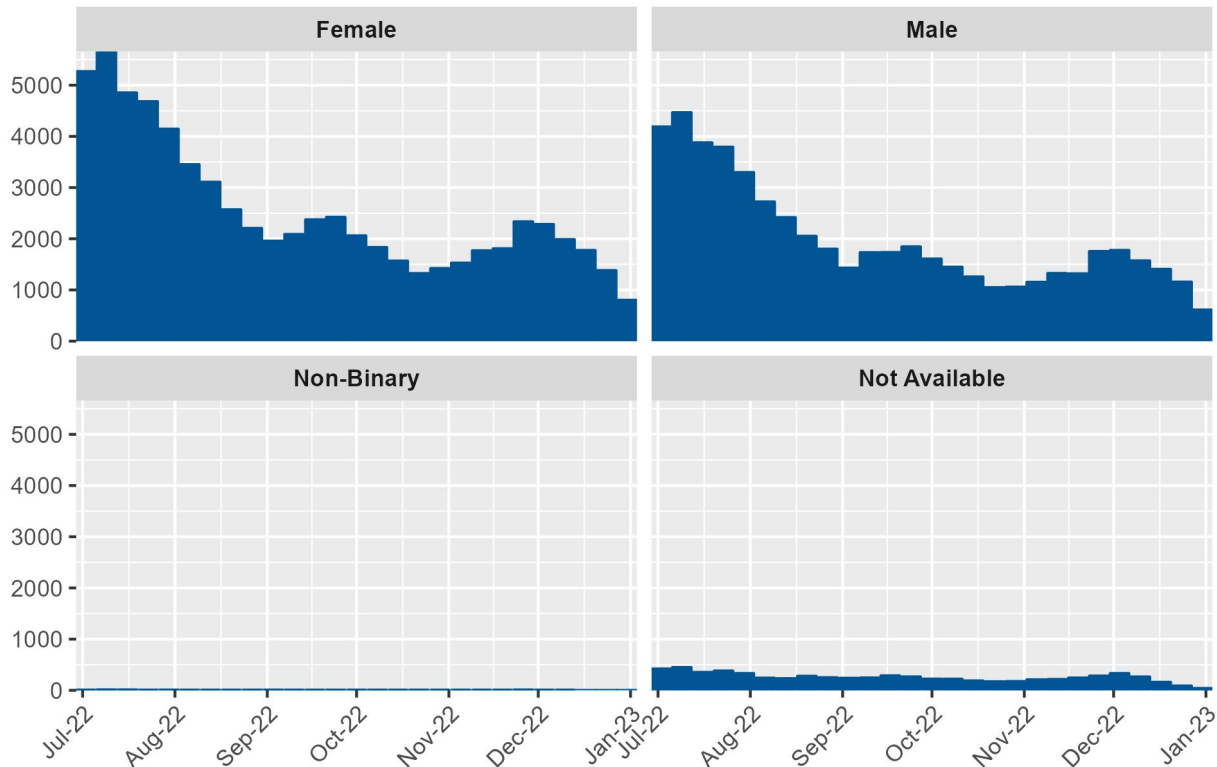
Oregon's Quarterly Data Report



Affairs Population Research Center and 2020 housing and demographic data from the U.S. Census Bureau's American Community Survey (ACS).

- Additional data are available at <https://public.tableau.com/app/profile/oregon.health.authority.covid.19/viz/OregonCOVID-19CaseDemographicsandDiseaseSeverityStatewide/DemographicDataHosp>.

**Figure 3. COVID-19 cases (counts) in the last six months by sex and week of onset**



In this paneled bar graph, COVID-19 case counts by sex are displayed over the past six months. Each panel corresponds with a different sex. The peaks and dips in case counts across sex generally align throughout the past six months. More detailed information on case counts and rates by sex are available at:

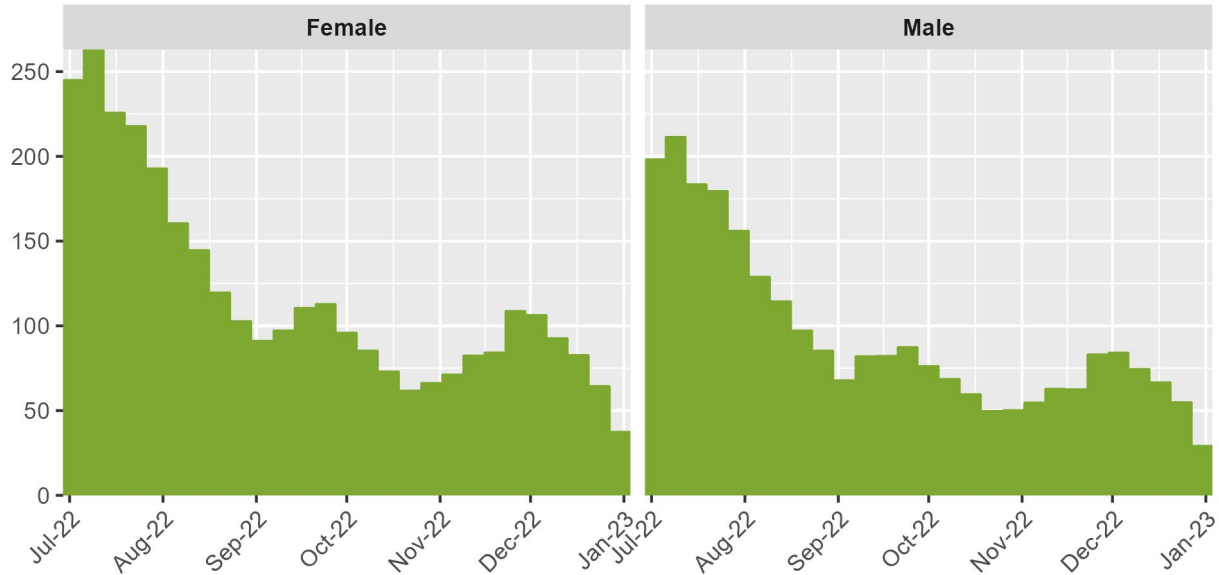
<https://public.tableau.com/app/profile/oregon.health.authority.covid.19/viz/OregonCOVID-19CaseDemographicsandDiseaseSeverityStatewide/DemographicDataHosp>.

# COVID-19 Quarterly Report

Oregon's Quarterly Data Report



**Figure 4. COVID-19 case rates per 100,000 in the last six months by sex and week of onset**



In this paneled bar graph, COVID-19 case rates per 100,000 by sex are displayed over the past six months. Each panel corresponds with a different sex. The peaks and dips in case rates across sex generally align throughout the past six months. More detailed information on case counts and rates by sex are available at:

<https://public.tableau.com/app/profile/oregon.health.authority.covid.19/viz/OregonCOVID-19CaseDemographicsandDiseaseSeverityStatewide/DemographicDataHosp>.

## Age

**Table 3a. Severity and rates of COVID-19 by age, Dec. 2022**

Age group	Cases	% of total cases	Cases per 100,000 per year	Hospitalized	% Hospitalized	Deaths	Case fatality
0-9	983	6.2	2,483	23	2.3	0	
10-19	665	4.2	1,591	9	1.4	0	
20-29	1,820	11.5	3,812	34	1.9	0	

# COVID-19 Quarterly Report

Oregon's Quarterly Data Report



Age group	Cases	% of total cases	Cases per 100,000 per year	Hospitalized	% Hospitalized	Deaths	Case fatality
30-39	2,005	12.7	3,876	63	3.1	1	0.0
40-49	1,829	11.6	3,937	59	3.2	4	0.2
50-59	1,869	11.8	4,282	100	5.4	3	0.2
60-69	2,172	13.7	4,865	151	7.0	5	0.2
70-79	2,184	13.8	6,943	183	8.4	21	1.0
80+	2,090	13.2	13,662	288	13.8	57	2.7
Not Available	213	1.3		3	1.4	1	0.5
Total	15,830	100.0	4,368	913	5.8	92	0.6

**Table 3b. Severity and rates of COVID-19 by age in the last six months**

Age group	Cases	% of total cases	Cases per 100,000 per year	Hospitalized	% Hospitalized	Deaths	Case fatality
0-9	8,496	6.6	3,616	112	1.3	1	0.0
10-19	7,335	5.7	2,956	76	1.0	0	
20-29	16,290	12.7	5,748	267	1.6	7	0.0
30-39	18,670	14.5	6,081	404	2.2	9	0.0
40-49	16,252	12.7	5,895	378	2.3	20	0.1
50-59	16,173	12.6	6,243	567	3.5	41	0.3
60-69	17,191	13.4	6,487	978	5.7	91	0.5
70-79	15,355	12.0	8,225	1,341	8.7	190	1.2
80+	11,295	8.8	12,439	1,742	15.4	528	4.7
Not Available	1,353	1.1		31	2.3	2	0.1
Total	128,410	100.0	5,970	5,896	4.6	889	0.7

# COVID-19 Quarterly Report

Oregon's Quarterly Data Report



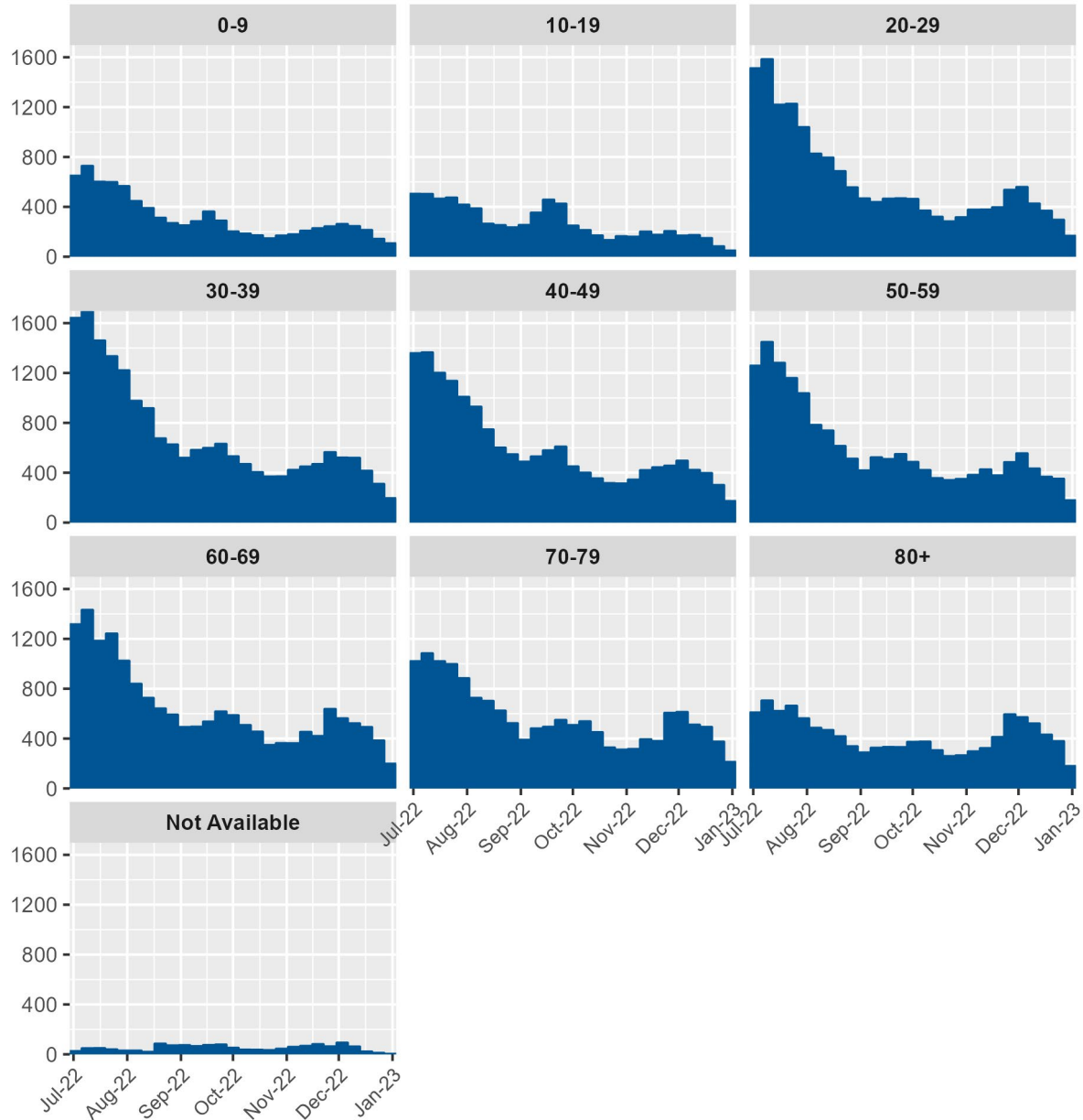
1. Annualized case rates are calculated by using the number of cases reported in each time period, divided by population, then multiplied to represent a full year of data. This allows for comparison between time periods of differing lengths.
2. Case fatality refers to the percentage of cases reported to have died within each time period.
3. Rates are calculated using population estimates from the 2021 Annual Population Report from Portland State University's College of Urban & Public Affairs Population Research Center and 2020 housing and demographic data from the U.S. Census Bureau's American Community Survey (ACS).
4. Additional data are available at  
[https://public.tableau.com/app/profile/oregon.health.authority.covid.19/viz/Oregon-COVID-19CaseDemographicsandDiseaseSeverityStatewide/DemographicDataHosp;](https://public.tableau.com/app/profile/oregon.health.authority.covid.19/viz/Oregon-COVID-19CaseDemographicsandDiseaseSeverityStatewide/DemographicDataHosp)  
and  
[https://public.tableau.com/app/profile/oregon.health.authority.covid.19/viz/Oregon-COVID-19CaseDemographicsandDiseaseSeverityStatewide/SeverityTrends.](https://public.tableau.com/app/profile/oregon.health.authority.covid.19/viz/Oregon-COVID-19CaseDemographicsandDiseaseSeverityStatewide/SeverityTrends)

# COVID-19 Quarterly Report

Oregon's Quarterly Data Report



**Figure 5. COVID-19 cases (counts) in the last six months by age and week of onset**



In this paneled bar graph, COVID-19 case counts by age are displayed over the past six months. Each panel corresponds with a different age group. The peaks and dips in case

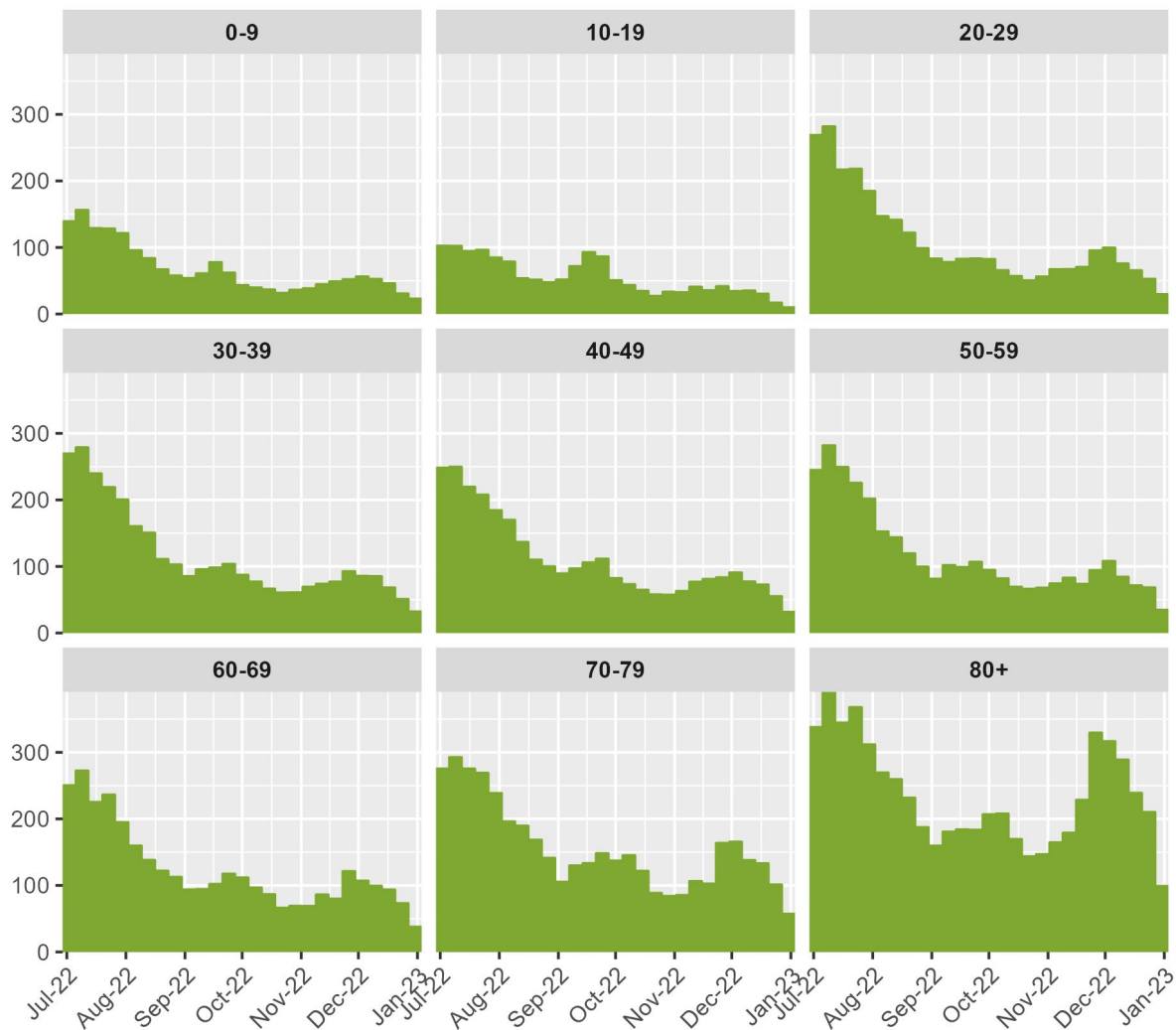
# COVID-19 Quarterly Report

Oregon's Quarterly Data Report



counts across age generally align throughout the past six months. More detailed information on case counts and rates by age are available at: <https://public.tableau.com/app/profile/oregon.health.authority.covid.19/viz/OregonCOVID-19CaseDemographicsandDiseaseSeverityStatewide/DemographicDataHosp>.

**Figure 6. COVID-19 case rates per 100,000 in the last six months by age and week of onset**



In this paneled bar graph, COVID-19 case rates per 100,000 by age are displayed over the past six months. Each panel corresponds with a different age group. The peaks and

# COVID-19 Quarterly Report

Oregon's Quarterly Data Report



dips in case rates across age generally align throughout the past six months. More detailed information on case counts and rates by age are available at: <https://public.tableau.com/app/profile/oregon.health.authority.covid.19/viz/OregonCOVID-19CaseDemographicsandDiseaseSeverityStatewide/DemographicDataHosp>.

## Race

**Table 4a. Severity and rates of COVID-19 by race, Dec. 2022**

Race	Cases	% of total cases	Cases per 100,000 per year	Hospitalized	% Hospitalized	Deaths	Case fatality
> 1 race	106	0.7	473	4	3.8	1	0.9
American Indian/Alaska Native	198	1.3	4,996	6	3.0	0	
Asian	381	2.4	2,338	26	6.8	2	0.5
Black	331	2.1	4,822	22	6.6	0	
Not Available	5,711	36.1		125	2.2	24	0.4
Other	1,030	6.5		59	5.7	2	0.2
Pacific Islander	29	0.2	2,032	1	3.4	0	
White	8,044	50.8	2,688	670	8.3	63	0.8
Total	15,830	100.0	4,368	913	5.8	92	0.6

**Table 4b. Severity and rates of COVID-19 by race in the last six months**

Race	Cases	% of total cases	Cases per 100,000 per year	Hospitalized	% Hospitalized	Deaths	Case fatality
> 1 race	1,548	1.2	1,165	33	2.1	5	0.3
American Indian/Alaska Native	1,569	1.2	6,669	52	3.3	5	0.3

# COVID-19 Quarterly Report

Oregon's Quarterly Data Report



Race	Cases	% of total cases	Cases per 100,000 per year	Hospitalized	% Hospitalized	Deaths	Case fatality
Asian	4,343	3.4	4,490	163	3.8	17	0.4
Black	2,503	1.9	6,143	153	6.1	8	0.3
Not Available	40,999	31.9		783	1.9	254	0.6
Other	8,610	6.7		342	4.0	29	0.3
Pacific Islander	169	0.1	1,995	7	4.1	1	0.6
White	68,669	53.5	3,866	4,363	6.4	570	0.8
Total	128,410	100.0	5,970	5,896	4.6	889	0.7

1. Annualized case rates are calculated by using the number of cases reported in each time period, divided by population, then multiplied to represent a full year of data. This allows for comparison between time periods of differing lengths.
2. Case fatality refers to the percentage of cases reported to have died within each time period.
3. People are asked to self-report their race, ethnicity, tribal affiliation, country of origin or ancestry.
4. Rates are calculated using population estimates from the 2021 Annual Population Report from Portland State University's College of Urban & Public Affairs Population Research Center and 2020 housing and demographic data from the U.S. Census Bureau's American Community Survey (ACS).
5. Persons for whom race information was not available were not included in these estimates. The number of persons with unavailable race data can be found in Tables 4a and 4b.
6. 4,061 (47.2%) of the 8,610 persons who identify as "Other" race also self-identify as Hispanic or Latino.
7. Additional data are available at <https://public.tableau.com/app/profile/oregon.health.authority.covid.19/viz/Oregon-COVID-19CaseDemographicsandDiseaseSeverityStatewide/DemographicDataHosp;> and [https://public.tableau.com/app/profile/oregon.health.authority.covid.19/viz/Oregon-COVID-19CaseDemographicsandDiseaseSeverityStatewide/SeverityTrends.](https://public.tableau.com/app/profile/oregon.health.authority.covid.19/viz/Oregon-COVID-19CaseDemographicsandDiseaseSeverityStatewide/SeverityTrends)

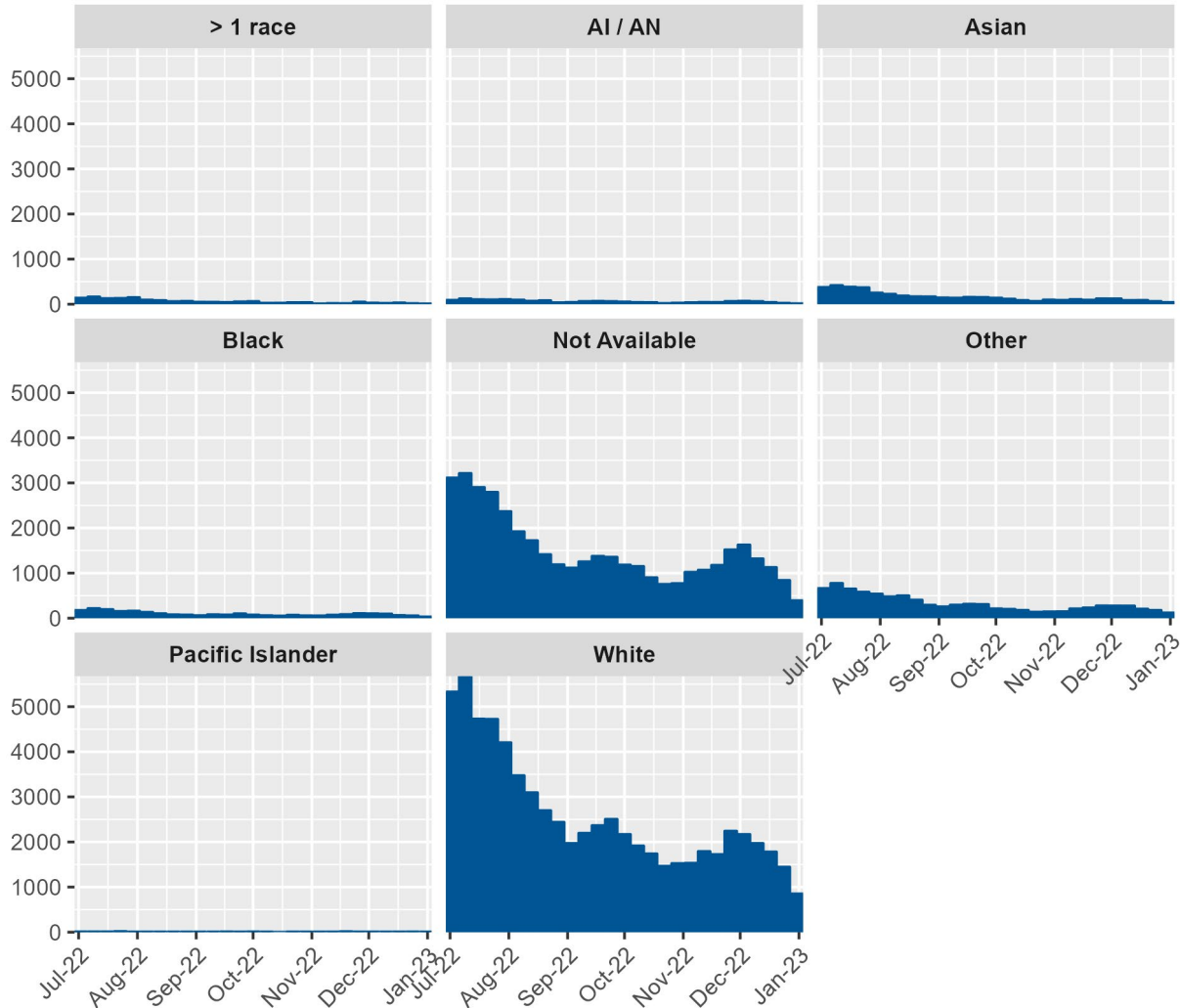


# COVID-19 Quarterly Report

Oregon's Quarterly Data Report



**Figure 7. COVID-19 cases (counts) in the last six months by race and week of onset**



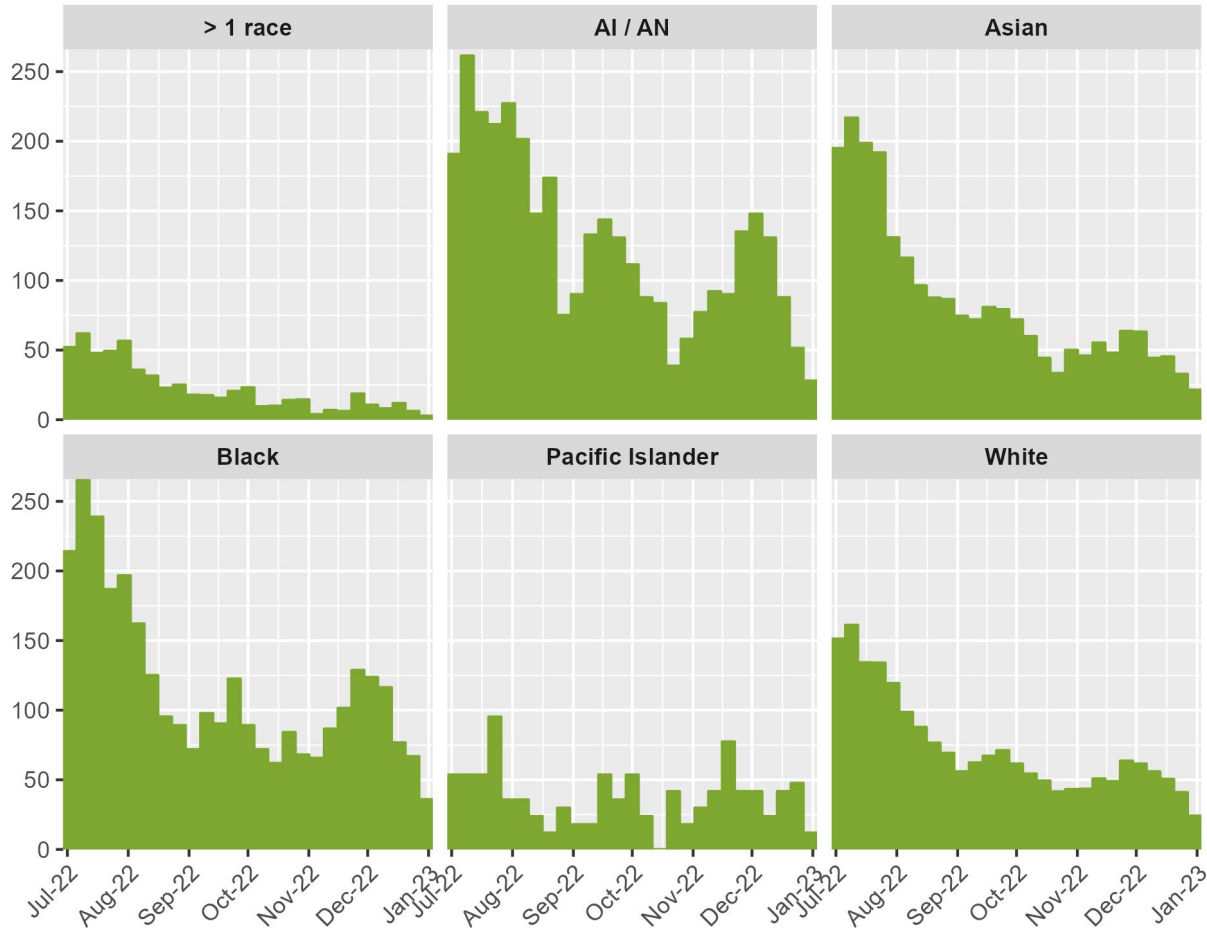
In this paneled bar graph, COVID-19 case counts by race are displayed over the past six months. Each panel corresponds with a different race. The peaks and dips in case counts across race generally align throughout the past six months. More detailed information on case counts and rates by race are available at: <https://public.tableau.com/app/profile/oregon.health.authority.covid.19/viz/OregonCOVID-19CaseDemographicsandDiseaseSeverityStatewide/DemographicDataHosp>.

# COVID-19 Quarterly Report

Oregon's Quarterly Data Report



**Figure 8. COVID-19 case rates per 100,000 in the last six months by race and week of onset**



In this paneled bar graph, COVID-19 case rates per 100,000 by race are displayed over the past six months. Each panel corresponds with a different race. The peaks and dips in case rates across race generally align throughout the past six months, with case rates tending to be highest for American Indian or Alaska Native persons, Asian persons and Black, African and African American persons. Case rates tend to be lowest among Pacific Islander persons, White persons and Multiracial persons. More detailed information on case counts and rates by race are available at:

<https://public.tableau.com/app/profile/oregon.health.authority.covid.19/viz/OregonCOVID-19CaseDemographicsandDiseaseSeverityStatewide/DemographicDataHosp>.

# COVID-19 Quarterly Report

Oregon's Quarterly Data Report



## Ethnicity

**Table 5a. Severity and rates of COVID-19 by ethnicity, Dec. 2022**

Ethnicity	Cases	% of total cases	Cases per 100,000 per year	Hospitalized	% Hospitalized	Deaths	Case fatality
Hispanic	1,001	6.3	2,089	52	5.2	1	0.1
Not Hispanic	7,490	47.3	2,382	672	9.0	51	0.7
Unknown	7,339	46.4		189	2.6	40	0.5
Total	15,830	100.0	4,368	913	5.8	92	0.6

**Table 5b. Severity and rates of COVID-19 by ethnicity in the last six months**

Ethnicity	Cases	% of total cases	Cases per 100,000 per year	Hospitalized	% Hospitalized	Deaths	Case fatality
Hispanic	8,736	6.8	3,071	291	3.3	13	0.1
Not Hispanic	64,568	50.3	3,459	4,376	6.8	485	0.8
Unknown	55,106	42.9		1,229	2.2	391	0.7
Total	128,410	100.0	5,970	5,896	4.6	889	0.7

1. Annualized case rates are calculated by using the number of cases reported in each time period, divided by population, then multiplied to represent a full year of data. This allows for comparison between time periods of differing lengths.
2. Case fatality refers to the percentage of cases reported to have died within each time period.
3. Rates are calculated using population estimates from the 2021 Annual Population Report from Portland State University's College of Urban & Public Affairs Population Research Center and 2020 housing and demographic data from the U.S. Census Bureau's American Community Survey (ACS).
4. Additional data are available at <https://public.tableau.com/app/profile/oregon.health.authority.covid.19/viz/Oregon>

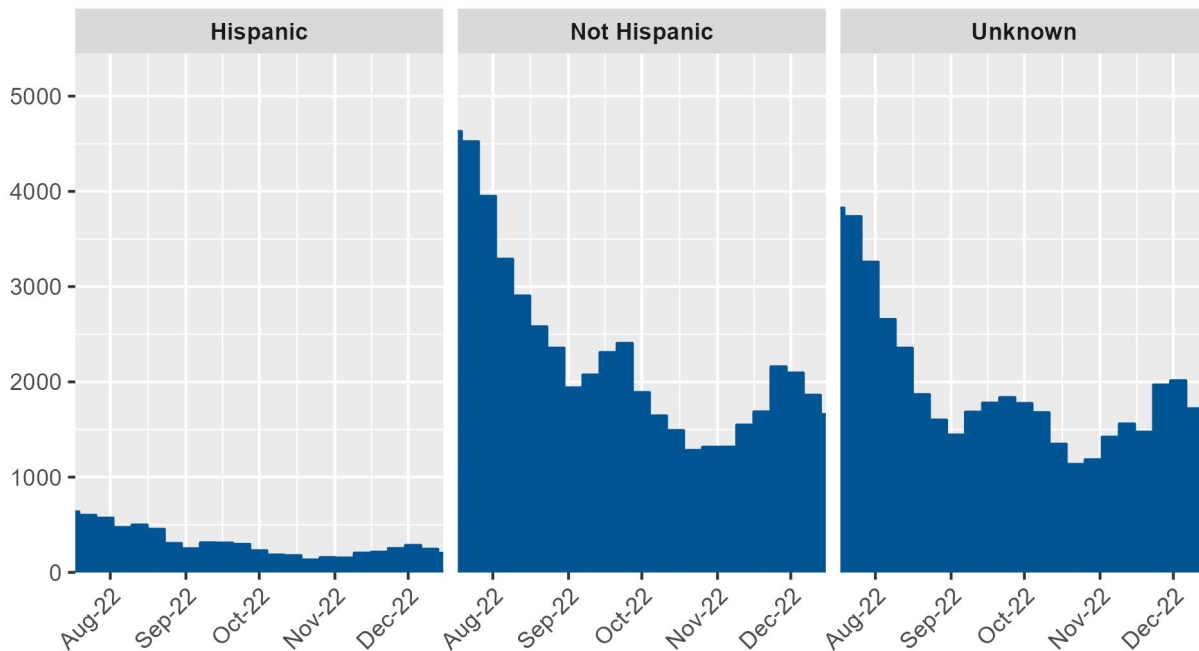
# COVID-19 Quarterly Report

Oregon's Quarterly Data Report



[COVID-19CaseDemographicsandDiseaseSeverityStatewide/DemographicDataHosp;](https://public.tableau.com/app/profile/oregon.health.authority.covid.19/viz/OregonCOVID-19CaseDemographicsandDiseaseSeverityStatewide/DemographicDataHosp)  
and  
[https://public.tableau.com/app/profile/oregon.health.authority.covid.19/viz/OregonCOVID-19CaseDemographicsandDiseaseSeverityStatewide/SeverityTrends.](https://public.tableau.com/app/profile/oregon.health.authority.covid.19/viz/OregonCOVID-19CaseDemographicsandDiseaseSeverityStatewide/SeverityTrends)

**Figure 9. COVID-19 cases (counts) in the last six months by ethnicity and week of onset**



In this paneled bar graph, COVID-19 case counts by ethnicity are displayed over the past six months. Each panel corresponds with a different ethnicity. The peaks and dips in case counts across ethnicity generally align throughout the past six months. More detailed information on case counts and rates by ethnicity are available at:

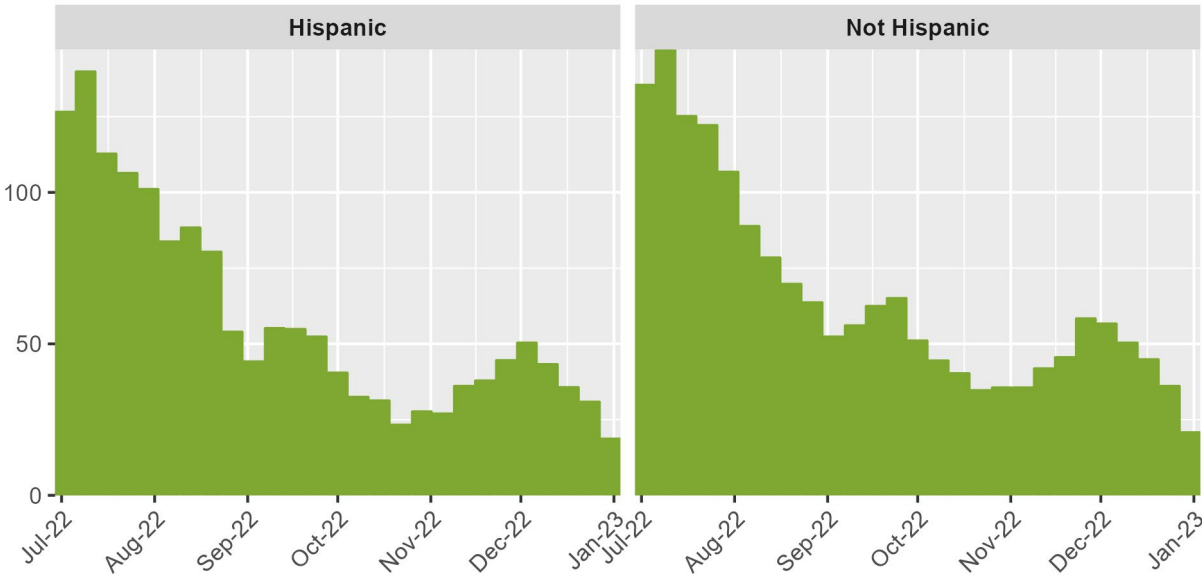
[https://public.tableau.com/app/profile/oregon.health.authority.covid.19/viz/OregonCOVID-19CaseDemographicsandDiseaseSeverityStatewide/DemographicDataHosp.](https://public.tableau.com/app/profile/oregon.health.authority.covid.19/viz/OregonCOVID-19CaseDemographicsandDiseaseSeverityStatewide/DemographicDataHosp)

# COVID-19 Quarterly Report

Oregon's Quarterly Data Report



**Figure 10. COVID-19 case rates per 100,000 in the last six months by ethnicity and week of onset**



In this paneled bar graph, COVID-19 case rates per 100,000 by ethnicity are displayed over the past six months. Each panel corresponds with a different ethnicity. The peaks and dips in case rates across ethnicity generally align throughout the past six months. More detailed information on case counts and rates by ethnicity are available at: <https://public.tableau.com/app/profile/oregon.health.authority.covid.19/viz/OregonCOVID-19CaseDemographicsandDiseaseSeverityStatewide/DemographicDataHosp>.

## People with Intellectual and Developmental Disabilities

As of June 6, 2022, OHA is aware of 4,655 people with intellectual or developmental disabilities who have had COVID-19 to date. This includes individuals who live in congregate settings and in family or individual homes. To date, there are 62 deaths among people with intellectual or developmental disabilities. This number is from conducting a match between Oregon Department of Human Services's Office of Developmental Disabilities Services (ODDS) client list and the Oregon COVID-19 case database. OHA will update this number on a quarterly basis.

# COVID-19 Quarterly Report

Oregon's Quarterly Data Report



Additional information about the ODDS program and COVID-19 can be found here: <https://www.oregon.gov/dhs/SENIORS-DISABILITIES/DD/ODDS%20Resource%20Library/ODDS-Residential-COVID-19-Report.pdf>.

ODDS data are based on self-reporting from providers and case management entities and therefore may differ from testing data received from OHA.

## Weekly COVID-19 Hospitalizations (HOSCAP)

OHA is publishing data on the number of COVID-19 hospitalizations by hospital in the prior week; data are from HOSCAP. Maps and tables containing the seven-day average of hospitalizations by region and hospital are available online at: <https://public.tableau.com/app/profile/oregon.health.authority.covid.19/viz/OregonCOVID-19HospitalCapacity/HospitalizationbyFacility>.

Information on Oregon's current hospital bed capacity by region is available online at: <https://public.tableau.com/app/profile/oregon.health.authority.covid.19/viz/OregonCOVID-19HospitalCapacity/BedAvailabilitybyRegion>.

## ZIP code

OHA publishes data on cases by ZIP code, available online at:

<https://public.tableau.com/profile/oregon.health.authority.covid.19#!/vizhome/OregonCOVID-19CasesbyZIPCode/OregonsCOVID-19CasesbyZipCode>.

Summary table of all ZIP codes is available here:

<https://public.tableau.com/profile/oregon.health.authority.covid.19#!/vizhome/OregonCOVID-19CasesbyZIPCode-SummaryTable/CasesbyZIPCodeSummaryTable>.

## Report Limitations

These data represent a snapshot of reported COVID-19 cases, and they include data on cases with pending investigations. The data shown in this report come from Oregon's electronic reportable disease surveillance system. Not all reported cases have been interviewed. In January 2022, public health case investigation and contact tracing operations were changed to prioritize responding to outbreaks in high-consequence settings, such as health care, congregate care (e.g., nursing homes), carceral settings

# COVID-19 Quarterly Report

Oregon's Quarterly Data Report



and settings related to our food chain. Public health is no longer calling all cases to attempt to interview to assess hospitalization status, symptoms and risk.

## Additional Information & Available Resources

Vaccination is the best way to prevent severe illness, hospitalization and death from COVID-19. For more information about COVID-19 vaccines, visit:

<https://covidvaccine.oregon.gov>.

The CDC recommends everyone age 5 and older who completed their COVID-19 primary vaccination series get a bivalent booster dose. For more information about COVID-19 vaccine booster eligibility, visit: [www.cdc.gov/coronavirus/2019-ncov/vaccines/booster-shot.html](http://www.cdc.gov/coronavirus/2019-ncov/vaccines/booster-shot.html) and <https://govstatus.egov.com/or-oha-booster-covid-19-vaccine>.

### How do I find a COVID-19 vaccine or booster?

Visit <https://www.vaccines.gov/>.

### Where can I find a COVID-19 testing site?

Visit <https://www.covid.gov/tests>.

### What should I do if I or a member of my household was exposed to or test positive for COVID-19?

If you test positive for COVID-19 and have questions or need assistance, contact your health care provider for guidance. If you don't have a health care provider, contact your local public health authority or call 211 for help finding one.

### How can I get treatment to prevent severe symptoms of COVID-19?

Treatment for COVID-19 is now widely available. Many effective treatments exist, and most work best if taken within five days of symptom onset. Find treatment options for yourself and others at: <https://govstatus.egov.com/or-oha-covid-19-treatments>.

### Who can I talk to if I need help?

Dial 2-1-1 for help with testing, vaccines or general questions. You may also be able to find assistance covering COVID-19-related expenses through your local county public health department.

# COVID-19 Quarterly Report

Oregon's Quarterly Data Report



## What other COVID-19 data are available?

Data on mortality in Oregon, including deaths associated with COVID-19, are available at <https://public.tableau.com/app/profile/oha.center.for.health.statistics>.

Additional data on age and disease severity of people diagnosed with COVID-19 are available at <https://public.tableau.com/app/profile/oregon.health.authority.covid.19/viz/OregonCOVID-19CaseDemographicsandDiseaseSeverityStatewide/DiseaseSeverity>.

Additional data on cases of COVID-19 by hospitalization status over time are available at <https://public.tableau.com/app/profile/oregon.health.authority.covid.19/viz/OregonHealthAuthorityCOVID-19DataDashboard/COVID-19EPICases>.

Additional information on cases of COVID-19 by county are available at <https://public.tableau.com/app/profile/oregon.health.authority.covid.19/viz/OregonCOVID-19Update/DailyDataUpdate>; and at <https://public.tableau.com/app/profile/oregon.health.authority.covid.19/viz/OregonCOVID-19TestingandOutcomesbyCounty/OregonsCOVID-19TestingandOutcomesbyCounty>.

**Document accessibility:** For individuals with disabilities or individuals who speak a language other than English, OHA can provide information in alternate formats such as translations, large print, or braille. Contact the Health Information Center at 1-971-673-2411, 711 TTY or [COVID19.LanguageAccess@dhs.oha.state.or.us](mailto:COVID19.LanguageAccess@dhs.oha.state.or.us).