

COVID-19 Quarterly Report

Oregon's Quarterly Data Report



Quarterly Data Report - April 13, 2023

Table of Contents

Quarterly COVID-19 Summary	2
Where are we now?	4
Background.....	5
Demographics	5
Geography	5
Sex	8
Age	10
Race	15
Ethnicity.....	19
People with Intellectual and Developmental Disabilities	21
Weekly COVID-19 Hospitalizations (HOSCAP)	22
ZIP code.....	22
Report Limitations	22
Additional Information & Available Resources	23

COVID-19 Quarterly Report

Oregon's Quarterly Data Report



Quarterly COVID-19 Summary

- There were 28,401 reported cases in spring 2023, down 36.1 % from 44,412 cases in winter 2022.¹
- Test positivity was 8.9% in spring 2023, up from 8.2% in winter 2022.
- On April 1, there were 178 COVID-19-positive patients hospitalized, down 47.2 % from 337 COVID-19-positive patients on Jan. 1, according to Oregon's Hospital Capacity Web System (HOSCAP).
- In spring 2023, the statewide reported annualized case rate² was 2,700 per 100,000 and was highest among the following age groups:
 - 8,051 cases per 100,000 (3,576 total cases) age 80+
 - 4,040 cases per 100,000 (3,689 total cases) ages 70-79
 - 2,831 cases per 100,000 (3,670 total cases) ages 60-69
- 3,013 cases (10.6% of all cases in spring 2023; 1,419 cases per 100,000 per year) were children age 17 or younger.
- 9,105 cases (32.1% of all cases in spring 2023; 4,562 cases per 100,000 per year) were people age 65 or older.
- As of April 1, 2023, Oregon has reported:
 - 969,498 cases
 - 40,932 hospitalizations (4.2% of all reported cases)
 - 9,509 deaths (<1.0% of all reported cases)

¹ OHA continually updates information on COVID-19 cases as new information becomes available. This may lead to slight variations in case counts compared to previous reports.

² Annualized case rates are calculated by using the number of cases reported in each time period, divided by population, and then multiplied to represent a full year of data. This allows for comparison between time periods of differing lengths.

COVID-19 Quarterly Report

Oregon's Quarterly Data Report



Table 1. Recent COVID-19 cases, hospitalizations and deaths

	Counts two quarters prior	Counts one quarter prior	Spring 2023
Cases	83,943	44,412	28,401
Hospitalizations	3,228	2,884	1,840
Deaths	560	485	337

1. Cases are counted using the date that the case was reported to public health. Hospitalizations are counted using the date of hospital admission. Deaths are counted using the date of death. Due to delays in case ascertainment, these data are subject to change.
2. Some hospitalizations and deaths from the most recent month may not yet be reported.

COVID-19 Quarterly Report

Oregon's Quarterly Data Report



Where are we now?

COVID-19 transmission in Oregon increased in spring 2023. Test positivity increased from 8.2% in winter 2022 to 8.9% in spring 2023. The Omicron XBB.1.5 strain became the predominant variant in mid-February. COVID-19-related hospitalizations decreased in spring 2023 despite increases in transmission, but hospital capacity continues to be strained. Hospitalizations are predicted to plateau in the coming weeks.

Oregon Health Authority (OHA) encourages people to consider getting both a flu shot and a bivalent COVID-19 booster. Vaccination is the most effective way to reduce the risk of severe illness, hospitalization and death from these serious respiratory viruses. The bivalent COVID-19 boosters protect against the original COVID-19 virus as well as the Omicron BA.4 and BA.5 subvariants. They are also expected to offer protection against severe disease from other Omicron subvariants such as BQ.1.1 and the more recent XBB and XBB.1.5. The bivalent boosters are now authorized for all vaccinated people age 6 months and older. Persons at high risk for severe illness from COVID-19 or influenza are also advised to plan for early medical consultation and treatment: antiviral agents are available for both of these respiratory infections and most effective if taken early.

Data on reported COVID-19 cases, hospitalizations and deaths in Oregon are updated weekly at:

<https://public.tableau.com/app/profile/oregon.health.authority.covid.19/viz/OregonCOVID-19Update/DailyDataUpdate>.

COVID-19 Quarterly Report

Oregon's Quarterly Data Report



Quarterly Data Report

Background

The COVID-19 Quarterly Report is published on the second Thursday of each quarter. Please note that the data reported here are continually updated. For information updated weekly, visit the OHA COVID-19 web page: <https://govstatus.egov.com/OR-OHA-COVID-19>.

Demographics

The following tables and figures show the demographic characteristics for all reported COVID-19 cases in the last six months.³ The tables show case counts, annualized case rates and indicators of severity by sex, age, race and ethnicity. The figures show cases over time, by week of onset, for sex, age, race and ethnicity.

Geography

The following figures show annualized case rates by county during spring 2023. Cases are counted according to the date on which the case became known to public health. Figure 1 displays annualized case rates by county compared to the annualized case rates for all of Oregon and the United States. Figure 2 uses a map to represent county-level annualized case rate data.

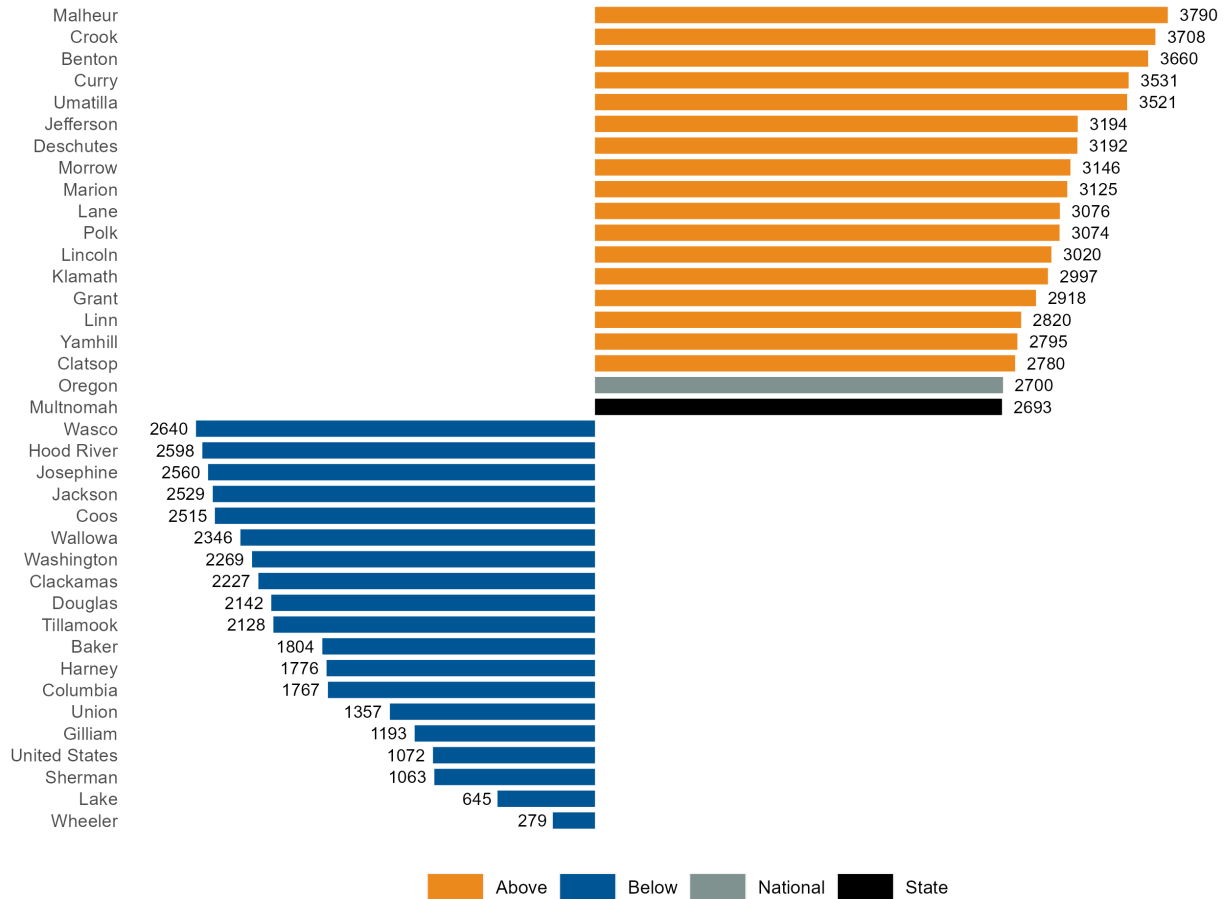
³ All tables and figures in this report referencing the last six months include data from Oct. 1, 2022, to March 31, 2023.

COVID-19 Quarterly Report

Oregon's Quarterly Data Report



Figure 1. Annualized case rates per 100,000 residents by county compared to state and U.S., spring 2023



1. Annualized case rates are calculated by using the number of cases reported in each time period, divided by population, and then multiplied to represent a full year of data. This allows for comparison between time periods of differing lengths.
2. Counties that had case rates higher than the state's case rate are displayed in orange. Counties that had case rates lower than the state's case rate are displayed in blue.
3. Counties that had zero cases in the time period displayed appear on the list but do not have a bar to display.

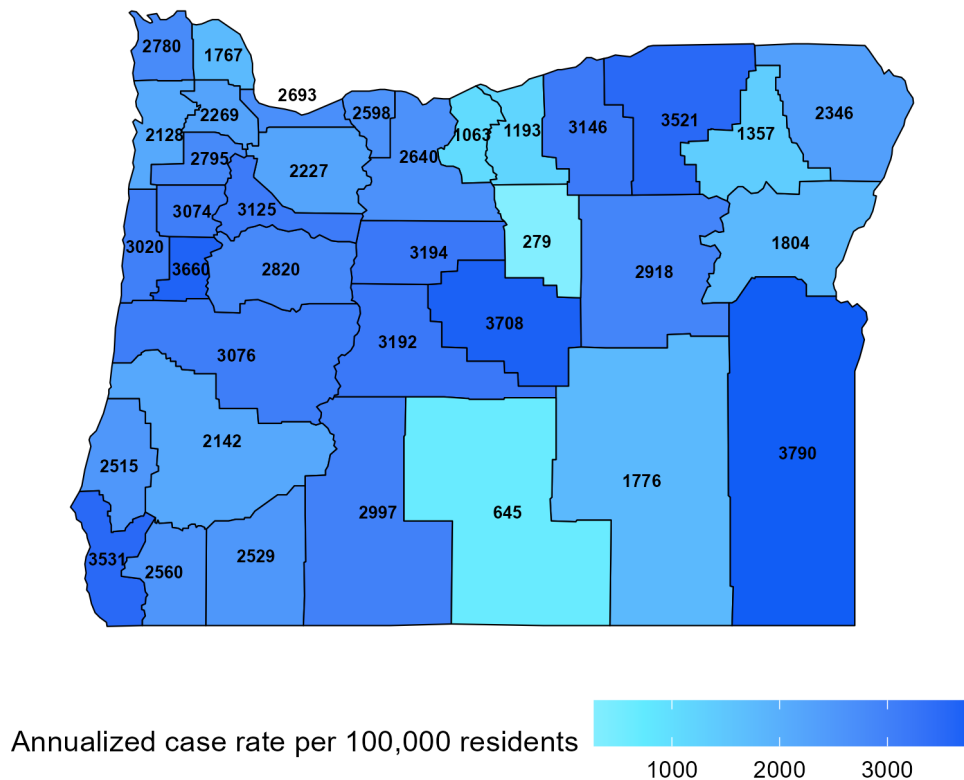
COVID-19 Quarterly Report

Oregon's Quarterly Data Report



4. United States rates are calculated by annualizing data based on a 28-day period from the CDC COVID-19 Data Tracker. These data are available at https://covid.cdc.gov/covid-data-tracker/#trends_weeklycases_select_00.
5. Additional data are available at https://public.tableau.com/app/profile/oregon.health.authority.covid.19/viz/Oregon_COVID-19Update/DailyDataUpdate.

Figure 2. Map of annualized case rates per 100,000 residents by county, spring 2023



COVID-19 Quarterly Report

Oregon's Quarterly Data Report



Sex

Table 2a. Severity and rates of COVID-19 by sex, spring 2023⁴

Sex	Cases	% of total cases	Cases per 100,000 per year	Hospitalized	% Hospitalized	Deaths	Case fatality
Female	15,498	54.6	2,921	889	5.7	155	1.0
Male	11,302	39.8	2,167	939	8.3	175	1.5
Non-Binary	10	0.0		0	0.0	0	
Not Available	1,591	5.6		12	0.8	7	0.4
Total	28,401	100.0	2,700	1,840	6.5	337	1.2

Table 2b. Severity and rates of COVID-19 by sex in the last six months

Sex	Cases	% of total cases	Cases per 100,000 per year	Hospitalized	% Hospitalized	Deaths	Case fatality
Female	38,970	53.5	3,632	2,273	5.8	378	1.0
Male	29,403	40.4	2,788	2,381	8.1	420	1.4
Non-Binary	50	0.1		1	2.0	1	2.0
Not Available	4,390	6.0		69	1.6	23	0.5
Total	72,813	100.0	3,423	4,724	6.5	822	1.1

1. Annualized case rates are calculated by using the number of cases reported in each time period, divided by population, and then multiplied to represent a full year of data. This allows for comparison between time periods of differing lengths.
2. Case fatality refers to the percentage of cases reported to have resulted in death within each time period.

⁴ There may be a lag of several weeks between when an individual dies and when their death appears in this report. Death counts are calculated using date of death.

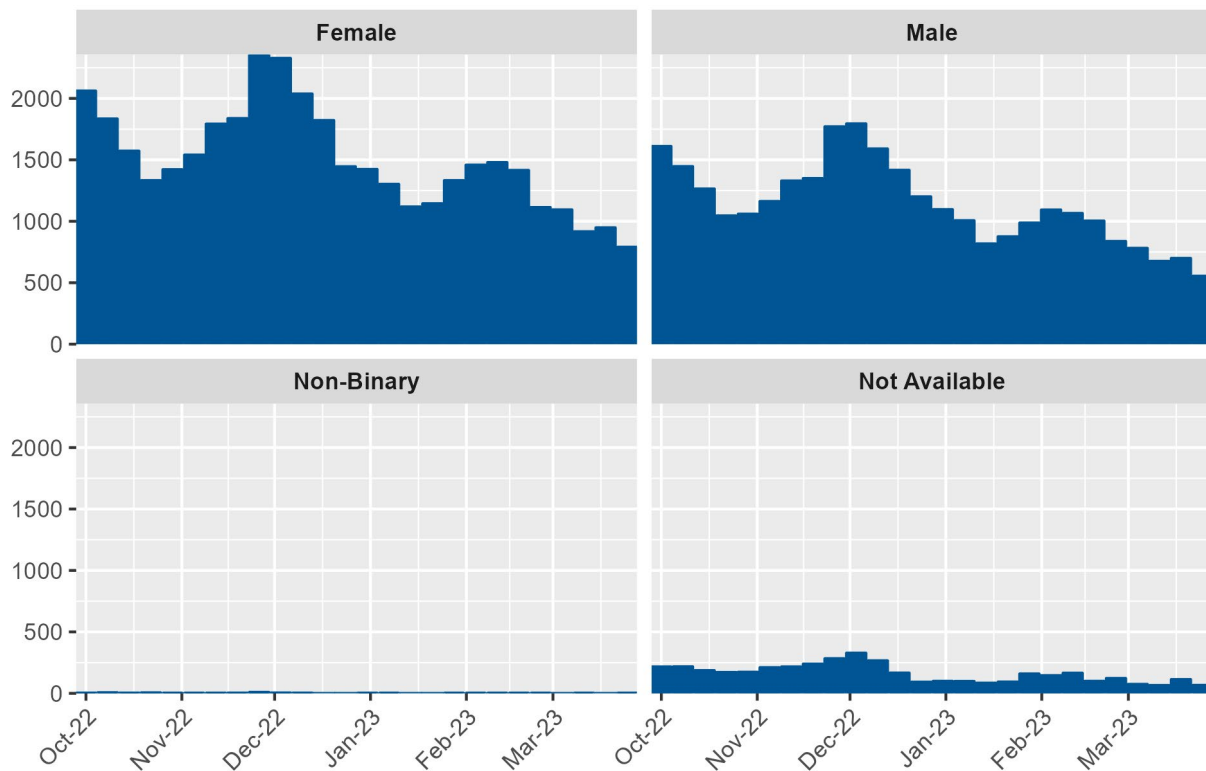
COVID-19 Quarterly Report

Oregon's Quarterly Data Report



3. Rates are calculated using population estimates from the 2021 Annual Population Report from Portland State University's College of Urban & Public Affairs Population Research Center and 2020 housing and demographic data from the U.S. Census Bureau's American Community Survey (ACS).
4. Additional data are available at <https://public.tableau.com/app/profile/oregon.health.authority.covid.19/viz/Oregon-COVID-19CaseDemographicsandDiseaseSeverityStatewide/DemographicDataHosp>.

Figure 3. COVID-19 cases (counts) in the last six months by sex and week of onset



In this paneled bar graph, COVID-19 case counts by sex are displayed over the past six months. Each panel corresponds with a different sex. The peaks and dips in case counts across sex generally align throughout the past six months. More detailed information on case counts and rates by sex are available at:

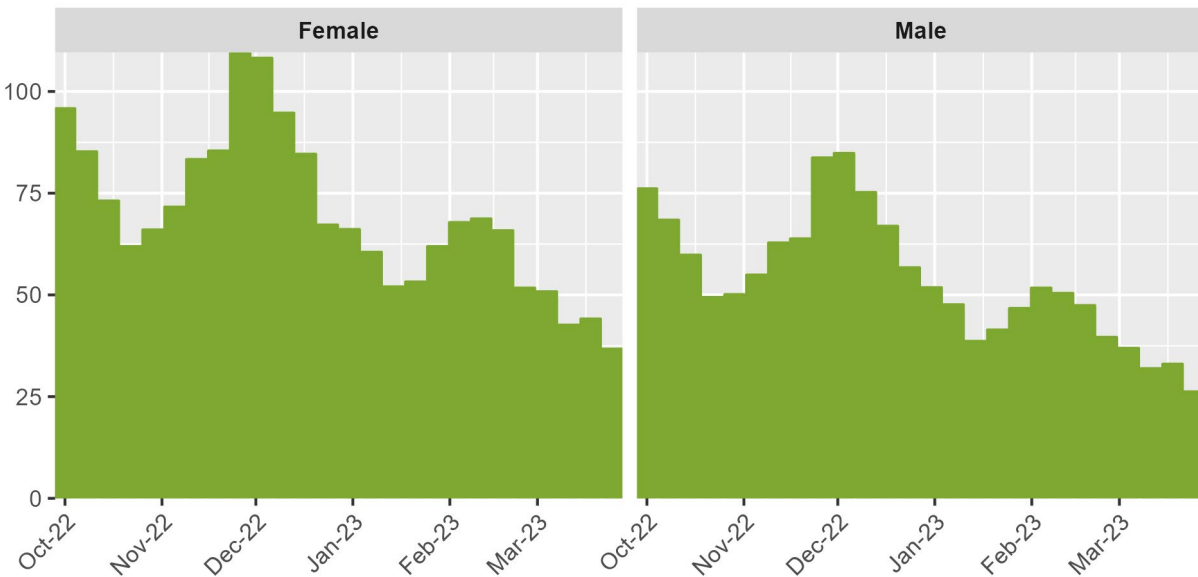
COVID-19 Quarterly Report

Oregon's Quarterly Data Report



<https://public.tableau.com/app/profile/oregon.health.authority.covid.19/viz/OregonCOVID-19CaseDemographicsandDiseaseSeverityStatewide/DemographicDataHosp>.

Figure 4. COVID-19 case rates per 100,000 in the last six months by sex and week of onset



In this paneled bar graph, COVID-19 case rates per 100,000 by sex are displayed over the past six months. Each panel corresponds with a different sex. The peaks and dips in case rates across sex generally align throughout the past six months. More detailed information on case counts and rates by sex are available at:

<https://public.tableau.com/app/profile/oregon.health.authority.covid.19/viz/OregonCOVID-19CaseDemographicsandDiseaseSeverityStatewide/DemographicDataHosp>.

Age

Table 3a. Severity and rates of COVID-19 by age, spring 2023

Age group	Cases	% of total cases	Cases per 100,000 per year	Hospitalized	% Hospitalized	Deaths	Case fatality
0-9	1,897	6.7	1,651	32	1.7	1	0.1

COVID-19 Quarterly Report

Oregon's Quarterly Data Report



Age group	Cases	% of total cases	Cases per 100,000 per year	Hospitalized	% Hospitalized	Deaths	Case fatality
10-19	1,634	5.8	1,346	13	0.8	1	0.1
20-29	3,544	12.5	2,557	71	2.0	0	
30-39	3,731	13.1	2,484	105	2.8	5	0.1
40-49	3,201	11.3	2,374	92	2.9	6	0.2
50-59	3,310	11.7	2,612	160	4.8	17	0.5
60-69	3,670	12.9	2,831	327	8.9	48	1.3
70-79	3,689	13.0	4,040	453	12.3	77	2.1
80+	3,576	12.6	8,051	587	16.4	182	5.1
Not Available	149	0.5		0	0.0	0	
Total	28,401	100.0	2,700	1,840	6.5	337	1.2

Table 3b. Severity and rates of COVID-19 by age in the last six months

Age group	Cases	% of total cases	Cases per 100,000 per year	Hospitalized	% Hospitalized	Deaths	Case fatality
0-9	4,635	6.4	1,994	90	1.9	2	0.0
10-19	3,906	5.4	1,591	48	1.2	1	0.0
20-29	8,709	12.0	3,107	179	2.1	3	0.0
30-39	9,614	13.2	3,165	287	3.0	9	0.1
40-49	8,378	11.5	3,072	262	3.1	19	0.2
50-59	8,705	12.0	3,397	433	5.0	32	0.4
60-69	9,798	13.5	3,738	802	8.2	103	1.1
70-79	9,592	13.2	5,194	1,101	11.5	180	1.9
80+	8,733	12.0	9,723	1,498	17.2	472	5.4
Not Available	743	1.0		24	3.2	1	0.1

COVID-19 Quarterly Report

Oregon's Quarterly Data Report



Age group	Cases	% of total cases	Cases per 100,000 per year	Hospitalized	% Hospitalized	Deaths	Case fatality
Total	72,813	100.0	3,423	4,724	6.5	822	1.1

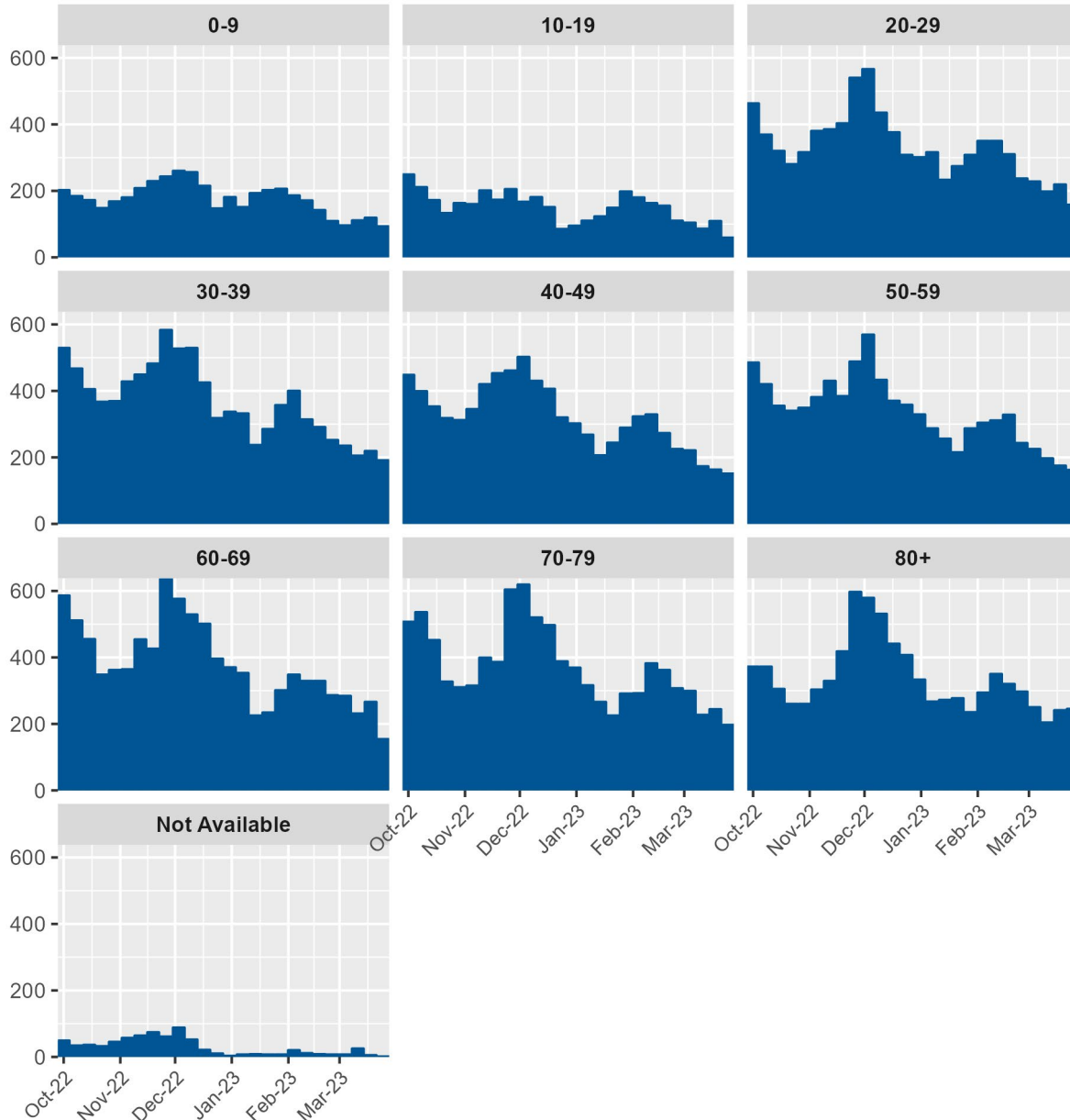
1. Annualized case rates are calculated by using the number of cases reported in each time period, divided by population, and then multiplied to represent a full year of data. This allows for comparison between time periods of differing lengths.
2. Case fatality refers to the percentage of cases reported to have died within each time period.
3. Rates are calculated using population estimates from the 2021 Annual Population Report from Portland State University's College of Urban & Public Affairs Population Research Center and 2020 housing and demographic data from the U.S. Census Bureau's American Community Survey (ACS).
4. Additional data are available at <https://public.tableau.com/app/profile/oregon.health.authority.covid.19/viz/Oregon-COVID-19CaseDemographicsandDiseaseSeverityStatewide/DemographicDataHosp;> and [https://public.tableau.com/app/profile/oregon.health.authority.covid.19/viz/Oregon-COVID-19CaseDemographicsandDiseaseSeverityStatewide/SeverityTrends.](https://public.tableau.com/app/profile/oregon.health.authority.covid.19/viz/Oregon-COVID-19CaseDemographicsandDiseaseSeverityStatewide/SeverityTrends)

COVID-19 Quarterly Report

Oregon's Quarterly Data Report



Figure 5. COVID-19 cases (counts) in the last six months by age and week of onset



In this paneled bar graph, COVID-19 case counts by age are displayed over the past six months. Each panel corresponds with a different age group. The peaks and dips in case

OHA 2395 (4/13/23)

Data are provisional and subject to change.

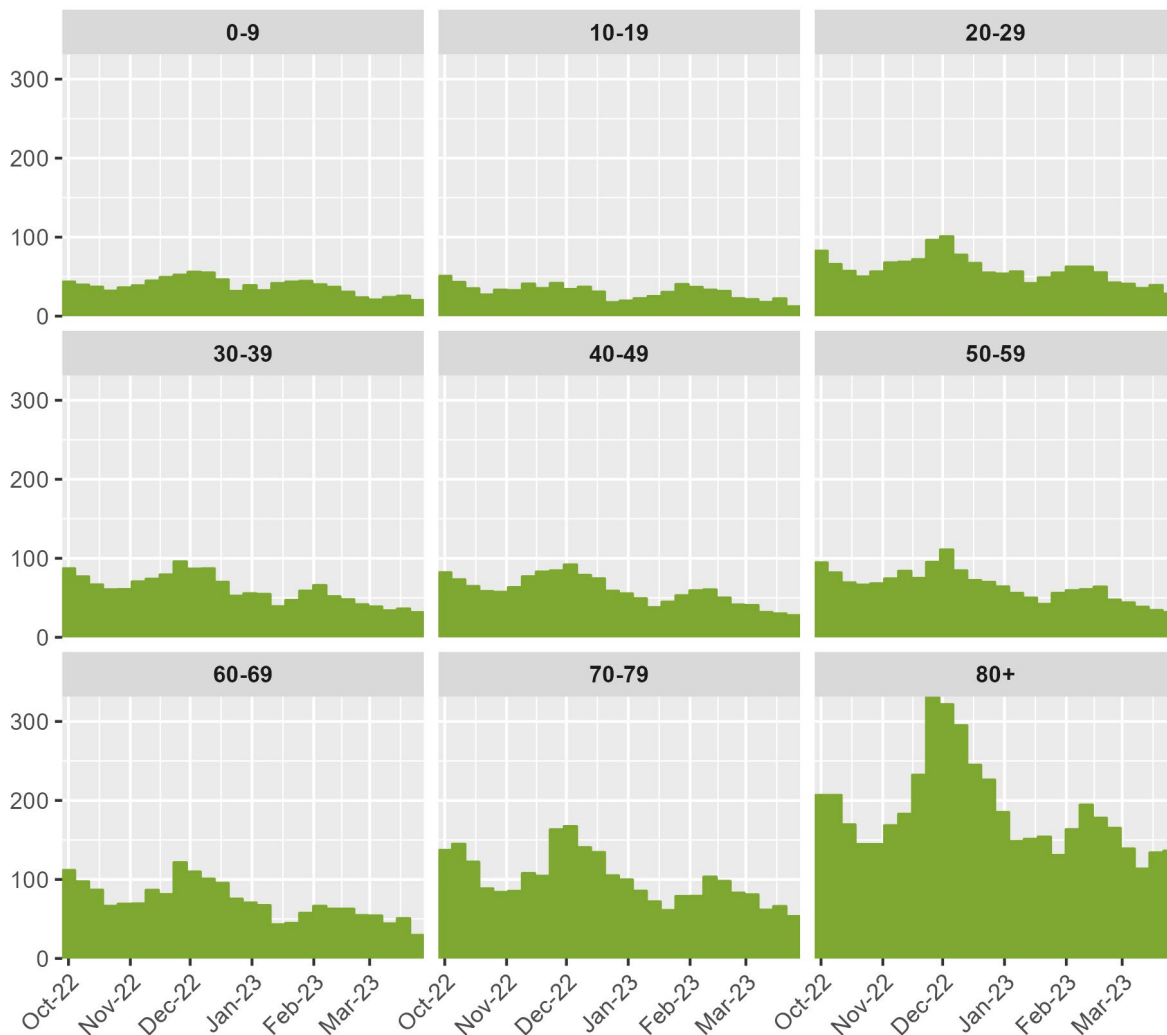
COVID-19 Quarterly Report

Oregon's Quarterly Data Report



counts across age generally align throughout the past six months. More detailed information on case counts and rates by age are available at: <https://public.tableau.com/app/profile/oregon.health.authority.covid.19/viz/OregonCOVID-19CaseDemographicsandDiseaseSeverityStatewide/DemographicDataHosp>.

Figure 6. COVID-19 case rates per 100,000 in the last six months by age and week of onset



In this paneled bar graph, COVID-19 case rates per 100,000 by age are displayed over the past six months. Each panel corresponds with a different age group. The peaks and

COVID-19 Quarterly Report

Oregon's Quarterly Data Report



dips in case rates across age generally align throughout the past six months. More detailed information on case counts and rates by age are available at: <https://public.tableau.com/app/profile/oregon.health.authority.covid.19/viz/OregonCOVID-19CaseDemographicsandDiseaseSeverityStatewide/DemographicDataHosp>.

Race

Table 4a. Severity and rates of COVID-19 by race, spring 2023

Race	Cases	% of total cases	Cases per 100,000 per year	Hospitalized	% Hospitalized	Deaths	Case fatality
> 1 race	179	0.6	275	14	7.8	3	1.7
American Indian/Alaska Native	342	1.2	2,972	14	4.1	3	0.9
Asian	767	2.7	1,621	53	6.9	7	0.9
Black	531	1.9	2,664	55	10.4	1	0.2
Not Available	10,937	38.5		236	2.2	93	0.9
Other	2,086	7.3		88	4.2	12	0.6
Pacific Islander	46	0.2	1,110	6	13.0	0	
White	13,513	47.6	1,555	1,374	10.2	218	1.6
Total	28,401	100.0	2,700	1,840	6.5	337	1.2

Table 4b. Severity and rates of COVID-19 by race in the last six months

Race	Cases	% of total cases	Cases per 100,000 per year	Hospitalized	% Hospitalized	Deaths	Case fatality
> 1 race	534	0.7	406	25	4.7	4	0.7

COVID-19 Quarterly Report

Oregon's Quarterly Data Report



Race	Cases	% of total cases	Cases per 100,000 per year	Hospitalized	% Hospitalized	Deaths	Case fatality
American Indian/Alaska Native	884	1.2	3,799	41	4.6	6	0.7
Asian	2,026	2.8	2,118	131	6.5	17	0.8
Black	1,464	2.0	3,633	135	9.2	3	0.2
Not Available	25,857	35.5		628	2.4	238	0.9
Other	4,772	6.6		233	4.9	22	0.5
Pacific Islander	136	0.2	1,623	14	10.3	1	0.7
White	37,140	51.0	2,114	3,517	9.5	531	1.4
Total	72,813	100.0	3,423	4,724	6.5	822	1.1

1. Annualized case rates are calculated by using the number of cases reported in each time period, divided by population, and then multiplied to represent a full year of data. This allows for comparison between time periods of differing lengths.
2. Case fatality refers to the percentage of cases reported to have died within each time period.
3. People are asked to self-report their race, ethnicity, tribal affiliation, country of origin or ancestry.
4. Rates are calculated using population estimates from the 2021 Annual Population Report from Portland State University's College of Urban & Public Affairs Population Research Center and 2020 housing and demographic data from the U.S. Census Bureau's American Community Survey (ACS).
5. Persons for whom race information was not available were not included in these estimates. The number of persons with unavailable race data can be found in Tables 4a and 4b.
6. 2,268 (47.5%) of the 4,772 persons who identify as "Other" race also self-identify as Hispanic or Latino.

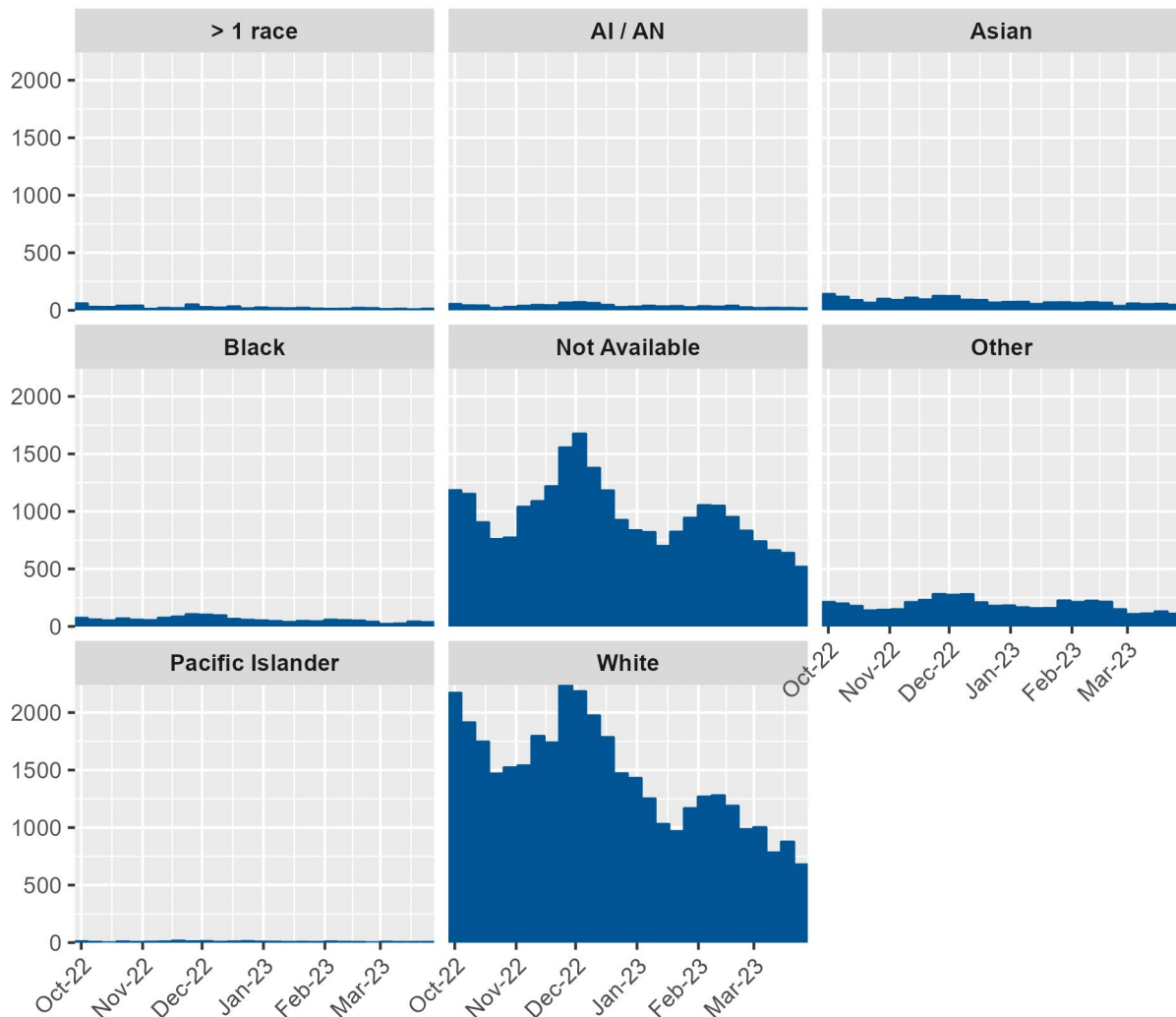
COVID-19 Quarterly Report

Oregon's Quarterly Data Report



- Additional data are available at https://public.tableau.com/app/profile/oregon.health.authority.covid.19/viz/Oregon_COVID-19CaseDemographicsandDiseaseSeverityStatewide/DemographicDataHosp; and https://public.tableau.com/app/profile/oregon.health.authority.covid.19/viz/Oregon_COVID-19CaseDemographicsandDiseaseSeverityStatewide/SeverityTrends.

Figure 7. COVID-19 cases (counts) in the last six months by race and week of onset



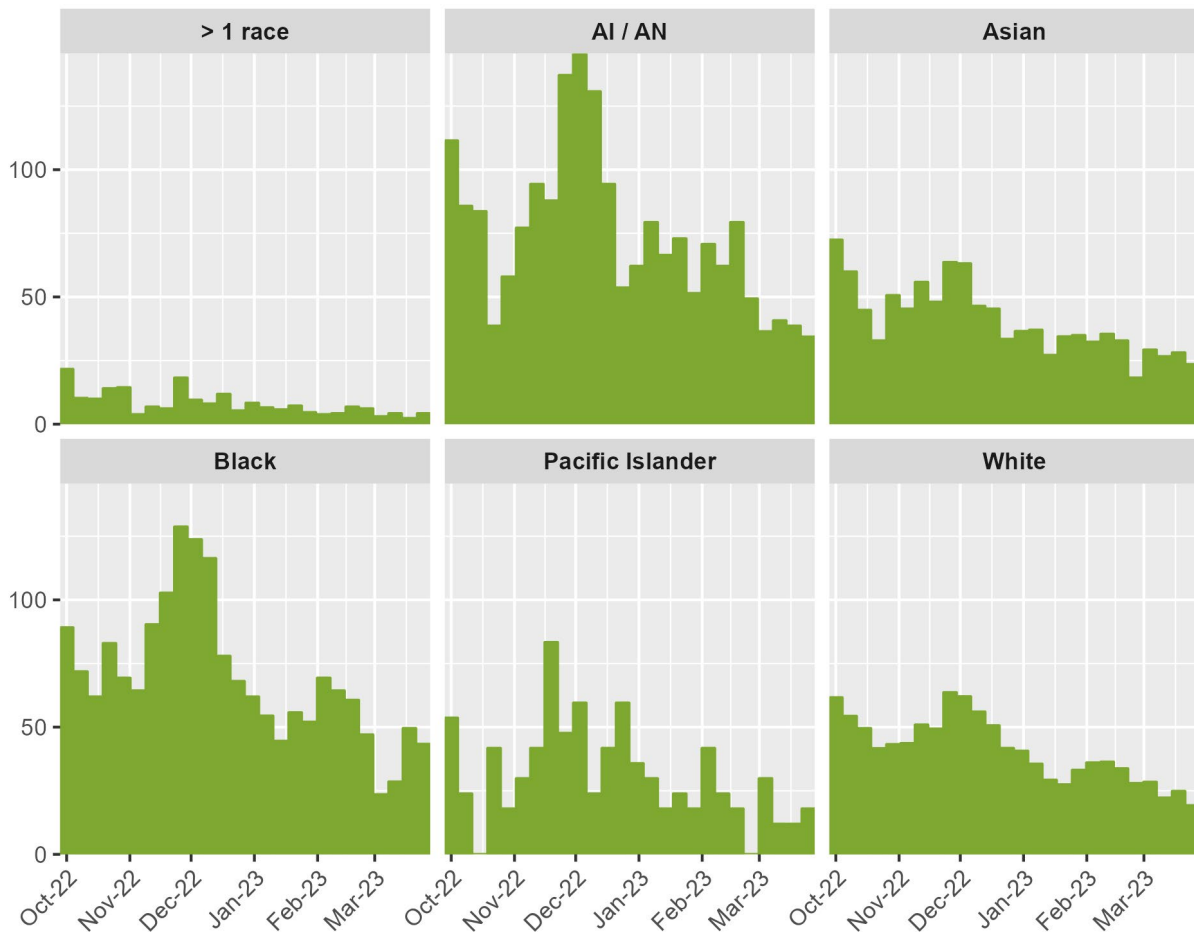
COVID-19 Quarterly Report

Oregon's Quarterly Data Report



In this paneled bar graph, COVID-19 case counts by race are displayed over the past six months. Each panel corresponds with a different race. The peaks and dips in case counts across race generally align throughout the past six months. More detailed information on case counts and rates by race are available at: <https://public.tableau.com/app/profile/oregon.health.authority.covid.19/viz/OregonCOVID-19CaseDemographicsandDiseaseSeverityStatewide/DemographicDataHosp>.

Figure 8. COVID-19 case rates per 100,000 in the last six months by race and week of onset



In this paneled bar graph, COVID-19 case rates per 100,000 by race are displayed over the past six months. Each panel corresponds with a different race. The peaks and dips in case rates across race generally align throughout the past six months, with case

COVID-19 Quarterly Report

Oregon's Quarterly Data Report



rates tending to be highest for American Indian or Alaska Native persons, Asian persons, and Black, African and African American persons. Case rates tend to be lowest among Pacific Islander persons, White persons and Multiracial persons. More detailed information on case counts and rates by race are available at: <https://public.tableau.com/app/profile/oregon.health.authority.covid.19/viz/OregonCOVID-19CaseDemographicsandDiseaseSeverityStatewide/DemographicDataHosp>.

Ethnicity

Table 5a. Severity and rates of COVID-19 by ethnicity, spring 2023

Ethnicity	Cases	% of total cases	Cases per 100,000 per year	Hospitalized	% Hospitalized	Deaths	Case fatality
Hispanic	2,204	7.8	1,584	81	3.7	4	0.2
Not Hispanic	13,201	46.5	1,446	1,443	10.9	189	1.4
Unknown	12,996	45.8		316	2.4	144	1.1
Total	28,401	100.0	2,700	1,840	6.5	337	1.2

Table 5b. Severity and rates of COVID-19 by ethnicity in the last six months

Ethnicity	Cases	% of total cases	Cases per 100,000 per year	Hospitalized	% Hospitalized	Deaths	Case fatality
Hispanic	4,822	6.6	1,714	219	4.5	9	0.2
Not Hispanic	34,679	47.6	1,879	3,598	10.4	451	1.3
Unknown	33,312	45.8		907	2.7	362	1.1
Total	72,813	100.0	3,423	4,724	6.5	822	1.1

1. Annualized case rates are calculated by using the number of cases reported in each time period, divided by population, and then multiplied to represent a full year of data. This allows for comparison between time periods of differing lengths.

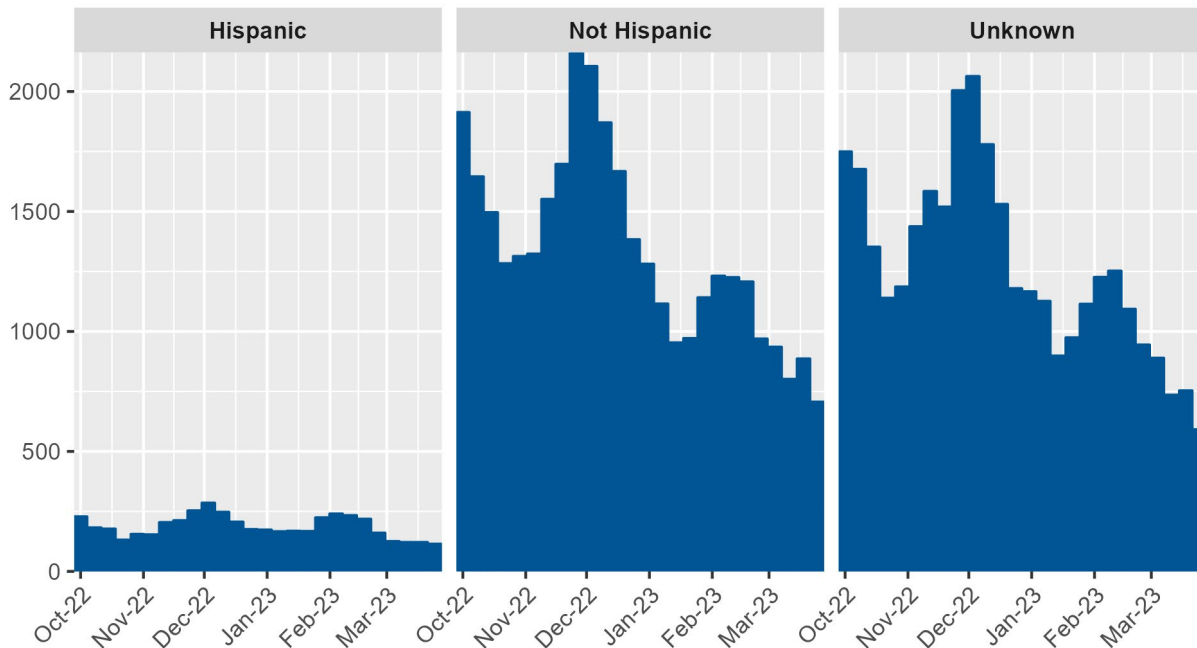
COVID-19 Quarterly Report

Oregon's Quarterly Data Report



2. Case fatality refers to the percentage of cases reported to have died within each time period.
3. Rates are calculated using population estimates from the 2021 Annual Population Report from Portland State University's College of Urban & Public Affairs Population Research Center and 2020 housing and demographic data from the U.S. Census Bureau's American Community Survey (ACS).
4. Additional data are available at https://public.tableau.com/app/profile/oregon.health.authority.covid.19/viz/Oregon_COVID-19CaseDemographicsandDiseaseSeverityStatewide/DemographicDataHosp; and [https://public.tableau.com/app/profile/oregon.health.authority.covid.19/viz/Oregon_COVID-19CaseDemographicsandDiseaseSeverityStatewide/SeverityTrends.](https://public.tableau.com/app/profile/oregon.health.authority.covid.19/viz/Oregon_COVID-19CaseDemographicsandDiseaseSeverityStatewide/SeverityTrends)

Figure 9. COVID-19 cases (counts) in the last six months by ethnicity and week of onset



In this paneled bar graph, COVID-19 case counts by ethnicity are displayed over the past six months. Each panel corresponds with a different ethnicity. The peaks and dips in case counts across ethnicity generally align throughout the past six months. More

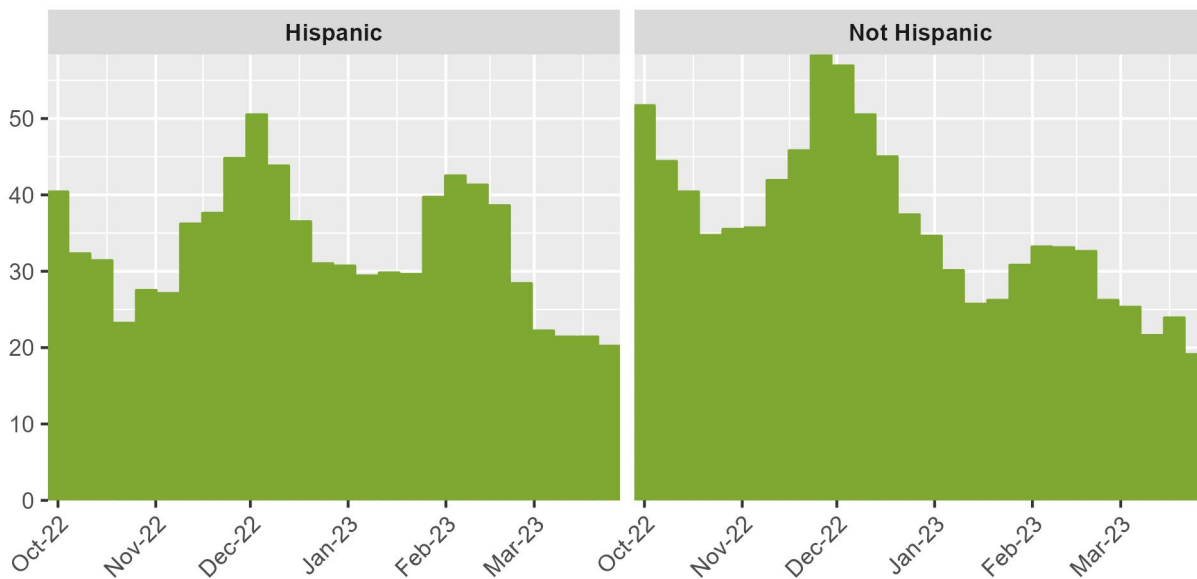
COVID-19 Quarterly Report

Oregon's Quarterly Data Report



detailed information on case counts and rates by ethnicity are available at: <https://public.tableau.com/app/profile/oregon.health.authority.covid.19/viz/OregonCOVID-19CaseDemographicsandDiseaseSeverityStatewide/DemographicDataHosp>.

Figure 10. COVID-19 case rates per 100,000 in the last six months by ethnicity and week of onset



In this paneled bar graph, COVID-19 case rates per 100,000 by ethnicity are displayed over the past six months. Each panel corresponds with a different ethnicity. The peaks and dips in case rates across ethnicity generally align throughout the past six months. More detailed information on case counts and rates by ethnicity are available at: <https://public.tableau.com/app/profile/oregon.health.authority.covid.19/viz/OregonCOVID-19CaseDemographicsandDiseaseSeverityStatewide/DemographicDataHosp>.

People with Intellectual and Developmental Disabilities

As of June 6, 2022, OHA is aware of 4,655 people with intellectual or developmental disabilities who have had COVID-19 to date. This includes individuals who live in congregate settings and in family or individual homes. To date, there are 62 deaths among people with intellectual or developmental disabilities. This number is from conducting a match between the Oregon Department of Human Services Office of

COVID-19 Quarterly Report

Oregon's Quarterly Data Report



Developmental Disabilities Services (ODDS) client list and the Oregon COVID-19 case database. OHA will update this number on a quarterly basis.

Additional information about the ODDS program and COVID-19 can be found here: <https://www.oregon.gov/dhs/SENIORS-DISABILITIES/DD/ODDS%20Resource%20Library/ODDS-Residential-COVID-19-Report.pdf>.

ODDS data are based on self-reports from providers and case management entities and therefore may differ from testing data received from OHA.

Weekly COVID-19 Hospitalizations (HOSCAP)

OHA is publishing data on the number of COVID-19 hospitalizations by hospital in the prior week; data are from HOSCAP. Maps and tables containing the 7-day average of hospitalizations by region and hospital are available online at:

<https://public.tableau.com/app/profile/oregon.health.authority.covid.19/viz/OregonCOVID-19HospitalCapacity/HospitalizationbyFacility>.

Information on Oregon's current hospital bed capacity by region is available online at: <https://public.tableau.com/app/profile/oregon.health.authority.covid.19/viz/OregonCOVID-19HospitalCapacity/BedAvailabilitybyRegion>.

ZIP code

OHA publishes data on cases by ZIP code, available online at:

<https://public.tableau.com/profile/oregon.health.authority.covid.19#!/vizhome/OregonCOVID-19CasesbyZIPCode/OregonsCOVID-19CasesbyZipCode>.

Summary table of all ZIP codes are available here:

<https://public.tableau.com/profile/oregon.health.authority.covid.19#!/vizhome/OregonCOVID-19CasesbyZIPCode-SummaryTable/CasesbyZIPCodeSummaryTable>.

Report Limitations

These data represent a snapshot of reported COVID-19 cases, and they include data on cases with pending investigations. The data shown in this report come from Oregon's electronic reportable disease surveillance system. Not all reported cases have been interviewed. In January 2022, public health case investigation and contact tracing

COVID-19 Quarterly Report

Oregon's Quarterly Data Report



operations were changed to prioritize responding to outbreaks in high-consequence settings, such as health care, congregate care (e.g., nursing homes), carceral settings and settings related to our food chain. Public health is no longer calling all cases to attempt to interview to assess hospitalization status, symptoms and risks.

Additional Information & Available Resources

Vaccination is the best way to prevent severe illness, hospitalization and death from COVID-19. For more information about COVID-19 vaccines, visit:

<https://covidvaccine.oregon.gov>.

The CDC recommends everyone age 6 months and older who completed their COVID-19 primary vaccination series get a bivalent booster dose. For more information about COVID-19 vaccine booster eligibility, visit: www.cdc.gov/coronavirus/2019-ncov/vaccines/booster-shot.html.

How do I find a COVID-19 vaccine or booster?

Visit <https://www.vaccines.gov/>.

Where can I find a COVID-19 testing site?

Visit <https://www.covid.gov/tests>.

What should I do if I or a member of my household was exposed or test positive for COVID-19?

If you test positive with COVID-19 and have questions or need assistance, contact your health care provider for guidance. If you don't have a health care provider, contact your local public health authority or call 211 for help finding one.

How can I get treatment to prevent severe symptoms of COVID-19?

Treatment for COVID-19 is now widely available. Many effective treatments exist, and most work best if taken within five days of symptom onset. Find treatment options for yourself and others at: <https://govstatus.egov.com/or-oha-covid-19-treatments>.

Who can I talk to if I need help?

Dial 2-1-1 for help with testing, vaccines or general questions. You may also be able to find assistance covering COVID-19-related expenses through your local county public health department.

COVID-19 Quarterly Report

Oregon's Quarterly Data Report



What other COVID-19 data are available?

Data on mortality in Oregon, including deaths associated with COVID-19, are available at <https://public.tableau.com/app/profile/oha.center.for.health.statistics>.

Additional data on age and disease severity of people diagnosed with COVID-19 are available at <https://public.tableau.com/app/profile/oregon.health.authority.covid.19/viz/OregonCOVID-19CaseDemographicsandDiseaseSeverityStatewide/DiseaseSeverity>.

Additional data on cases of COVID-19 by hospitalization status over time are available at <https://public.tableau.com/app/profile/oregon.health.authority.covid.19/viz/OregonHealthAuthorityCOVID-19DataDashboard/COVID-19EPICases>.

Additional information on cases of COVID-19 by county are available at <https://public.tableau.com/app/profile/oregon.health.authority.covid.19/viz/OregonCOVID-19Update/DailyDataUpdate>.

Document accessibility: For individuals with disabilities or individuals who speak a language other than English, OHA can provide information in alternate formats such as translations, large print, or braille. Oregon Health Authority's COVID Feedback team at 1-971-673-2411, 711 TTY or feedback@odhsoha.oregon.gov.