

# COVID-19 Weekly Report

Oregon's Weekly Surveillance Summary



## Weekly Data Report - August 18, 2021

### Table of Contents

Background .....	3
Weekly Report Summary .....	4
Clinical Characteristics and risk factors .....	4
Epidemiologic links .....	4
Figure 1. Epidemiologic link of recent COVID-19 cases by week of onset .....	6
Figure 2. Epidemiologic link of all COVID-19 cases by week of onset .....	7
Figure 3. Recent sporadic COVID-19 cases by race and week of onset .....	8
Figure 4. All sporadic COVID-19 cases by race and week of onset .....	9
Figure 5. Recent sporadic COVID-19 cases by ethnicity and week of onset .....	10
Figure 6. All sporadic COVID-19 cases by ethnicity and week of onset .....	11
Clinical symptoms and reported risk factors .....	11
Figure 7. Reported signs and symptoms for all COVID-19 cases .....	12
Figure 8. Reported symptoms among all COVID-19 cases by week of onset .....	13
Figure 9. Reported risk factors among all COVID-19 cases .....	14
Demographics .....	14
Geography .....	15
Figure 10. Case rates per 100,000 population, by county .....	15
Sex .....	16
Table 1. Severity and rates of COVID-19 by sex .....	16
Figure 11. Recent COVID-19 cases by sex and week of onset .....	17
Figure 12. All COVID-19 cases by sex and week of onset .....	18
Age .....	19
Table 2. Severity and rates of COVID-19 by age .....	19
Figure 13. Recent COVID-19 cases by age and week of onset .....	20

# COVID-19 Weekly Report

Oregon's Weekly Surveillance Summary



Figure 14. All COVID-19 cases (counts) by age and week of onset .....	21
Figure 15. All COVID-19 cases (case rate per 100,000) by age and week of onset.....	22
Race .....	23
Table 3. Severity and rates of COVID-19 by race .....	23
Figure 16. Recent COVID-19 cases by race and week of onset .....	24
Figure 17. All COVID-19 cases (counts) by race and week of onset.....	25
Figure 18. All COVID-19 cases (case rates per 100,000) by race and week of onset .....	26
Ethnicity.....	26
Table 4. Severity and rates of COVID-19 by ethnicity .....	26
Figure 19. Recent COVID-19 cases by ethnicity and week of onset .....	27
Figure 20. All COVID-19 cases by ethnicity (counts) and week of onset .....	28
Figure 21. All COVID-19 cases by ethnicity (case rates per 100,000) and week of onset .....	29
Age-adjustment .....	29
Table 5. Ratio of age-adjusted rates for cases, hospitalizations, and deaths by race .....	29
Table 6. Ratio of age-adjusted rates for cases, hospitalizations, and deaths by ethnicity .....	30
Follow-up.....	31
Figure 22. Follow up attempted within 24 hours, % by race.....	31
Figure 23. Follow up attempted within 24 hours, % by ethnicity .....	32
Figure 24. Cases interviewed, by race.....	33
Figure 25. Cases interviewed, by ethnicity .....	34
Recovery .....	35
Figure 26. Time to recovery among symptomatic people with COVID-19 .....	35
People with Intellectual and Developmental Disabilities .....	36
Weekly COVID-19 Hospitalizations (HOSCAP) .....	36
Table 7. Hospitals reporting 10 or more COVID-19 patients.....	36
Table 8. Hospitals reporting 1–9 COVID-19 patients. ....	38
ZIP code .....	39

# COVID-19 Weekly Report

Oregon's Weekly Surveillance Summary



## Background

COVID-19 Weekly Report data will be finalized every Sunday at 11 p.m. PDT, and the report will be published on Wednesday. Please note that the data reported here are continually being updated. For daily up-to-date information, visit the OHA COVID-19 web page: <https://govstatus.egov.com/OR-OHA-COVID-19>.

As of 11 p.m. Sunday, August 15, there have been 242,844 cases of COVID-19 reported to the Oregon Health Authority. Of these, 8,657 (3.6%) are “presumptive” cases—i.e., people with COVID-19-like symptoms and close contact with a confirmed case, but who did not have a confirmatory laboratory test. Though not confirmed, presumptive cases are highly likely to have COVID-19, given their specific symptoms and known exposure. Presumptive cases are encouraged to seek testing to confirm that they do have COVID-19. Presumptive cases who test positive are recategorized as confirmed cases.

These data represent a snapshot of COVID-19 risk factors and clinical and demographic characteristics of cases, and they include data on cases with pending investigations. Not all cases have been interviewed at the time of this report. The data shown in this report come from Oregon’s electronic disease surveillance system for reportable diseases.

During the week of August 8–August 14<sup>1</sup> 146,199 tests for COVID-19 were performed on Oregonians; of these, 11.8% had a positive result.<sup>2</sup> This figure represents a “test-based” method, whereby all electronic lab reports received by OHA are used to calculate percent positivity.<sup>3</sup> Detailed tables of the number of tests and percent positivity can be found online at <https://public.tableau.com/profile/oregon.health.authority.covid.19#!/vizhome/OregonHealthAuthorityCOVID-19DataDashboard/OregonsCOVID-19ELRsbyCounty>.

---

<sup>1</sup> This date range aligns with CDC’s “MMWR week.”

<sup>2</sup> Does not include antibody (serology) tests.

<sup>3</sup> [www.cdc.gov/coronavirus/2019-ncov/lab/resources/calculating-percent-positivity.html](http://www.cdc.gov/coronavirus/2019-ncov/lab/resources/calculating-percent-positivity.html)

# COVID-19 Weekly Report

Oregon's Weekly Surveillance Summary



## Weekly Report Summary

During Monday, August 9, through Sunday, August 15, 2021, OHA recorded 12,741 new cases of COVID-19 infection—a 53% increase over the previous week. Testing increased by another 22%, and test positivity increased from 9.5% to 11.8%. After six consecutive weeks of increasing case counts, this most recent tally is more than tenfold that of the week ending July 4, 2021.

Five hundred forty-six Oregonians with COVID-19 were hospitalized this week, up from 322 last week, the fifth consecutive week of increases, and the highest weekly figure of the pandemic. Forty-six Oregonians died in association with COVID-19, up from 40 last week and the highest toll since the last week of May 2021. Of the 242,844 cases reported in Oregon to date, 13,270 (5.5%) have been hospitalized, and 2,949 (1.2%) have died. During these past 6 weeks of rising case counts, a slightly higher proportion of hospitalizations (50%) have been in persons <60 years of age than throughout the earlier days of the pandemic (43%), while the proportion among those ≥70 declined from 38% to 30%. Similarly, the proportion of COVID-19-associated deaths among persons <60 years of age rose from 11% to 21%, while that among ≥70 year-olds fell from 74% to 58%. Data on mortality in Oregon, including deaths associated with COVID-19, are available at <https://public.tableau.com/profile/oha.center.for.health.statistics>.

Additional data are available at

<https://public.tableau.com/profile/oregon.health.authority.covid.19#!/vizhome/OregonCOVID-19CaseDemographicsandDiseaseSeverityStatewide/DemographicData>.

## Clinical Characteristics and risk factors

This section of the report describes the epidemiology of Oregon's COVID-19 cases, including indicators of COVID-19 transmission, common symptoms experienced by COVID-19 cases, and demographic breakdowns for sex, age, race, and ethnicity. Indicators of disease severity, specifically hospitalizations and deaths, are included in the tables.

## Epidemiologic links

The figures below show the epidemiologic link of COVID-19 cases. Public health classifies all cases as part of a household, part of an outbreak, part of a cluster, a close contact of another case, or sporadic. Sporadic indicates that a case was not linked to a known source of COVID-19. Lower numbers of sporadic cases suggest lower community spread of COVID-19. Figure 1 focuses on recent cases of COVID-19, and allows for the easy comparison of different types of

# COVID-19 Weekly Report

Oregon's Weekly Surveillance Summary



epidemiologic link. Figure 2 includes all COVID-19 cases, showing the pattern of epidemiologic links since the first cases were identified in Oregon. Figures 3 and 4 show sporadic cases by race, and figures 5 and 6 show sporadic cases by ethnicity. Looking at the data by race and ethnicity helps public health to identify disparities.

## **Epidemiologic link designations:**

- Sporadic:<sup>4</sup> Cases who do not have known exposure to another case or outbreak.
- Outbreak: Cases who have a shared, defined exposure with at least one other case. For example, a defined exposure could be an event, a workplace, a congregate facility, etc.
- Cluster: Cases who had contact with another case, but the exposure is not well defined. For example, cases from two households who interacted many times prior to illness onset.
- Household: Cases who were exposed to another case in their household.
- Close contact: Cases who were exposed to another case, not in their household. This designation was added on 7/15/2020.

---

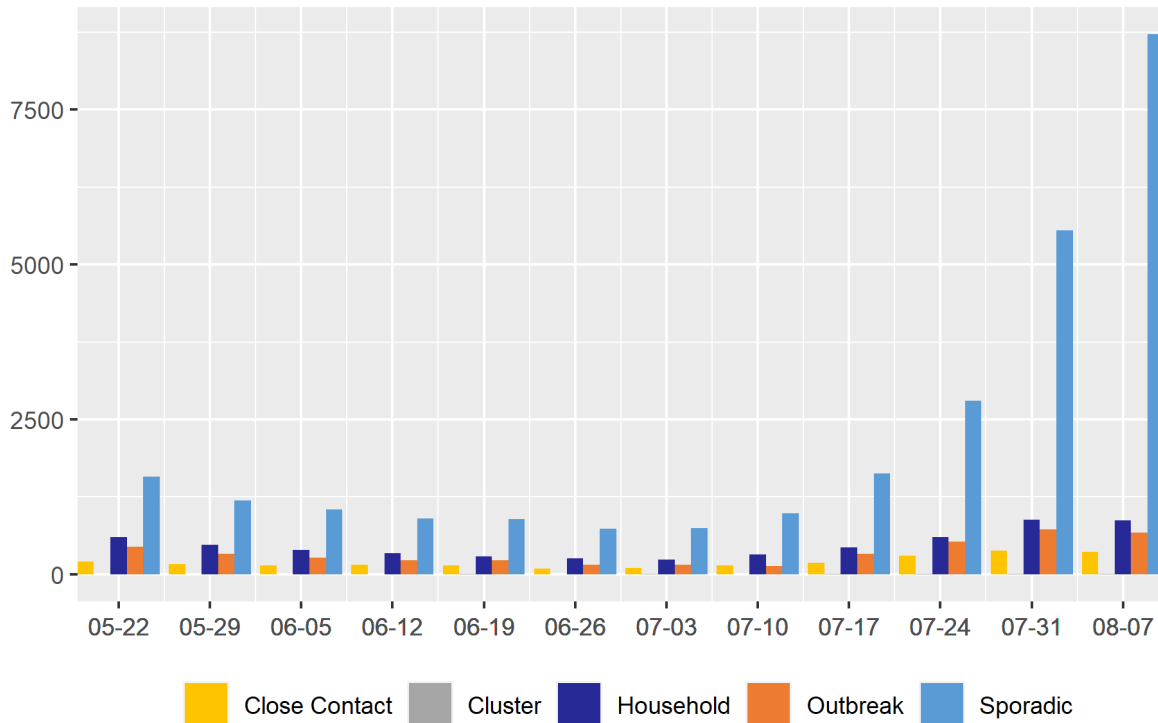
<sup>4</sup> Due to the lag between case reporting and case investigation, the proportion of cases categorized as sporadic is high in the most recent week or more; some of these cases will be recategorized after investigation is completed.

# COVID-19 Weekly Report

Oregon's Weekly Surveillance Summary



Figure 1. Epidemiologic link of recent COVID-19 cases by week of onset



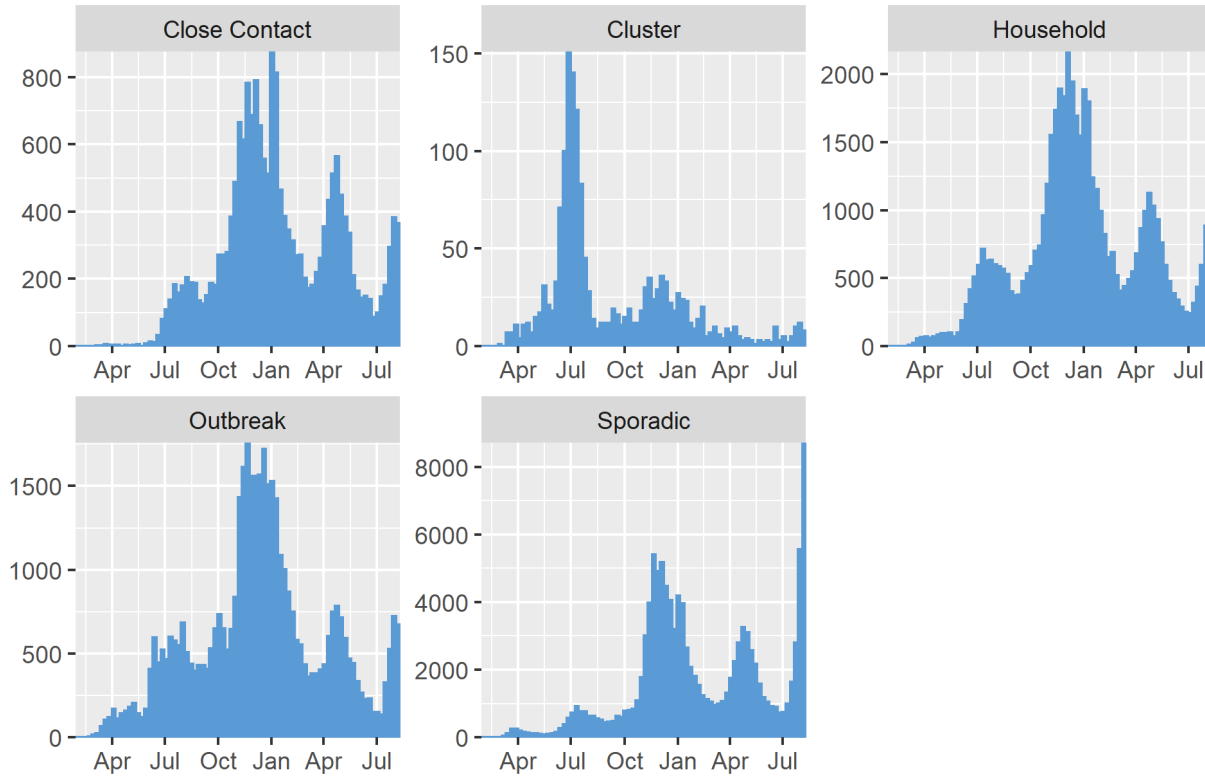
Data are provisional and subject to change.

# COVID-19 Weekly Report

Oregon's Weekly Surveillance Summary



Figure 2. Epidemiologic link of all COVID-19 cases by week of onset



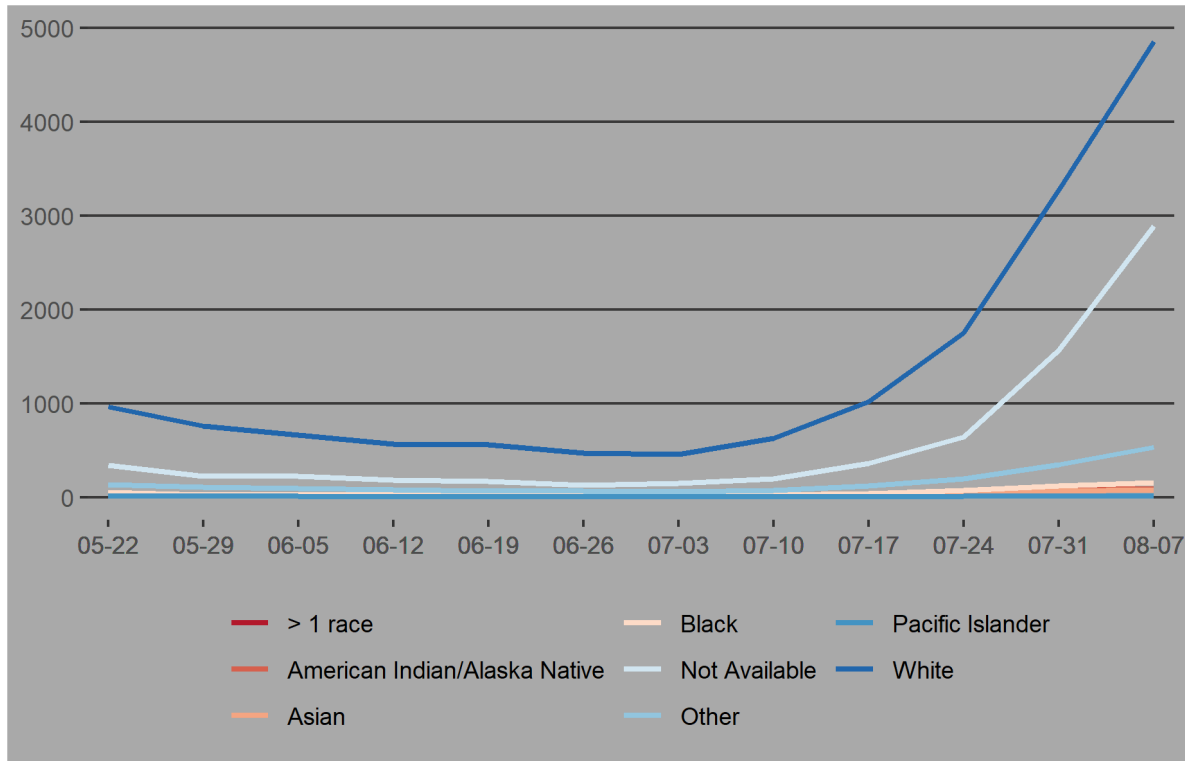
Data are provisional and subject to change.

# COVID-19 Weekly Report

Oregon's Weekly Surveillance Summary



Figure 3. Recent sporadic COVID-19 cases by race and week of onset



Data are provisional and subject to change.

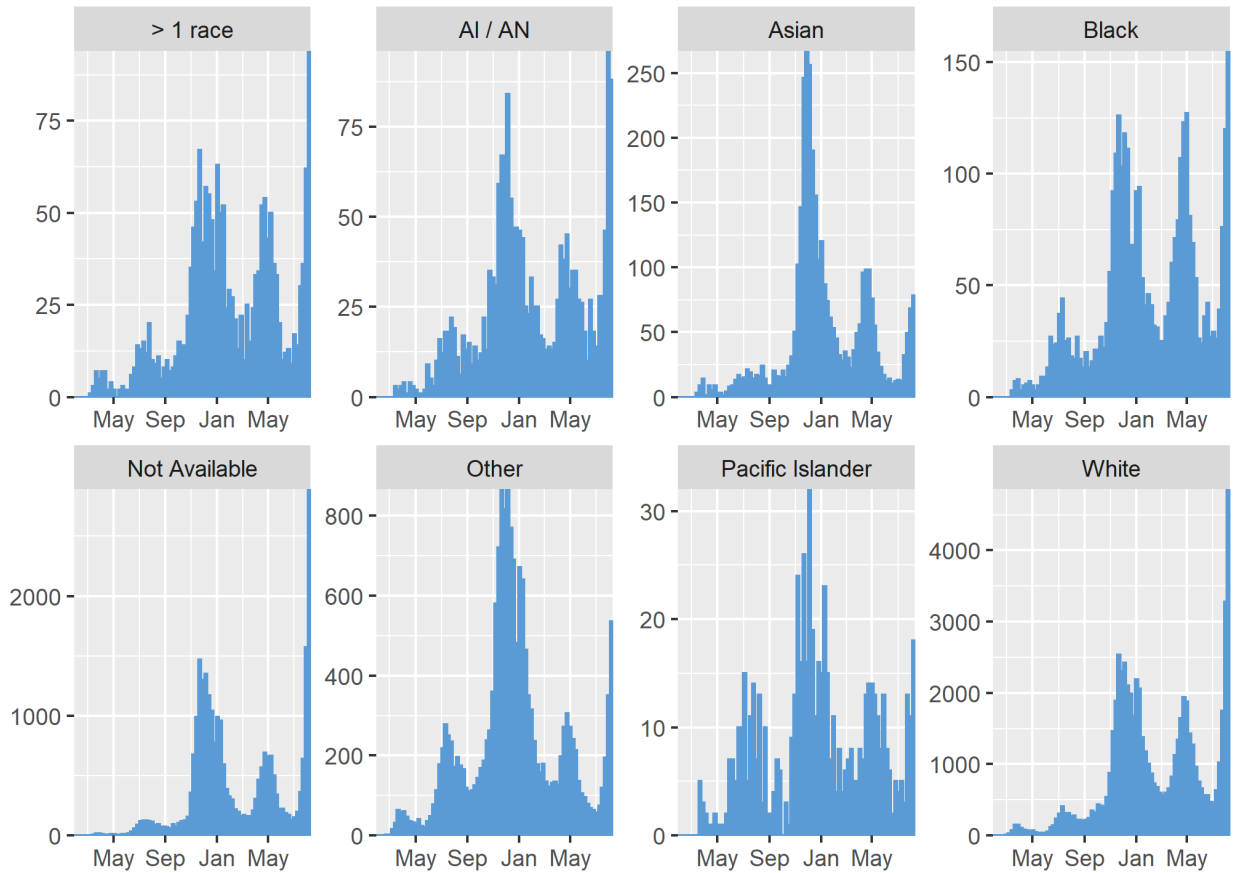


# COVID-19 Weekly Report

Oregon's Weekly Surveillance Summary



Figure 4. All sporadic COVID-19 cases by race and week of onset



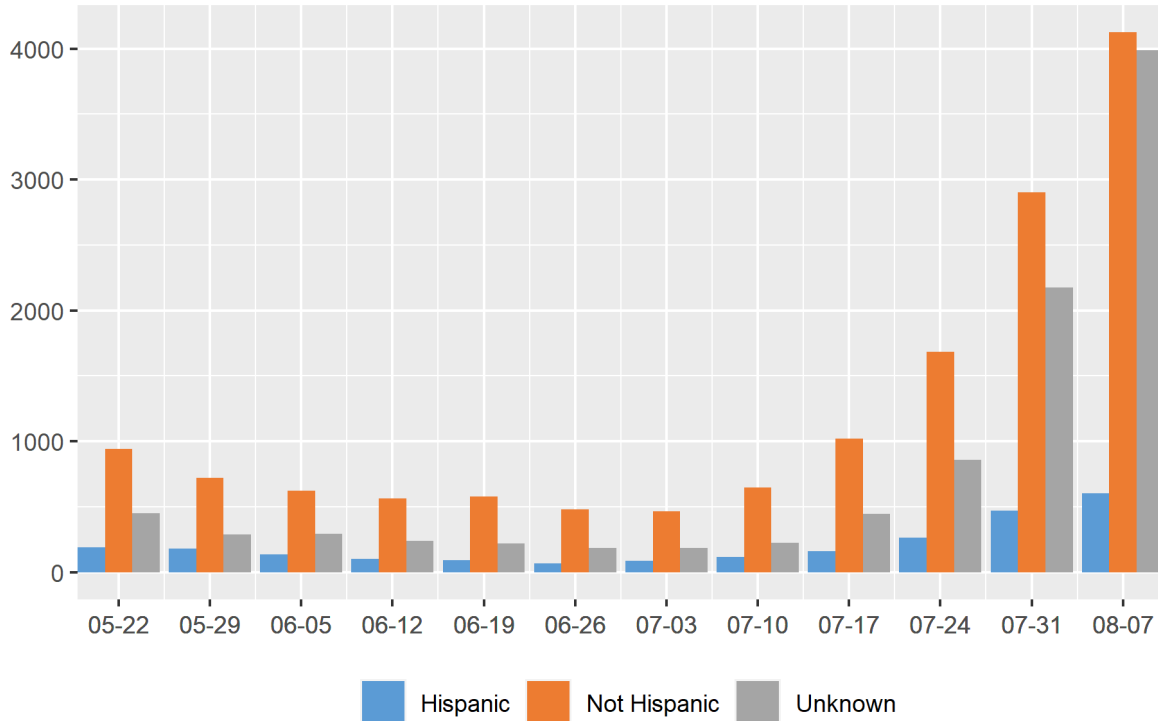
Data are provisional and subject to change.

# COVID-19 Weekly Report

Oregon's Weekly Surveillance Summary



Figure 5. Recent sporadic COVID-19 cases by ethnicity and week of onset

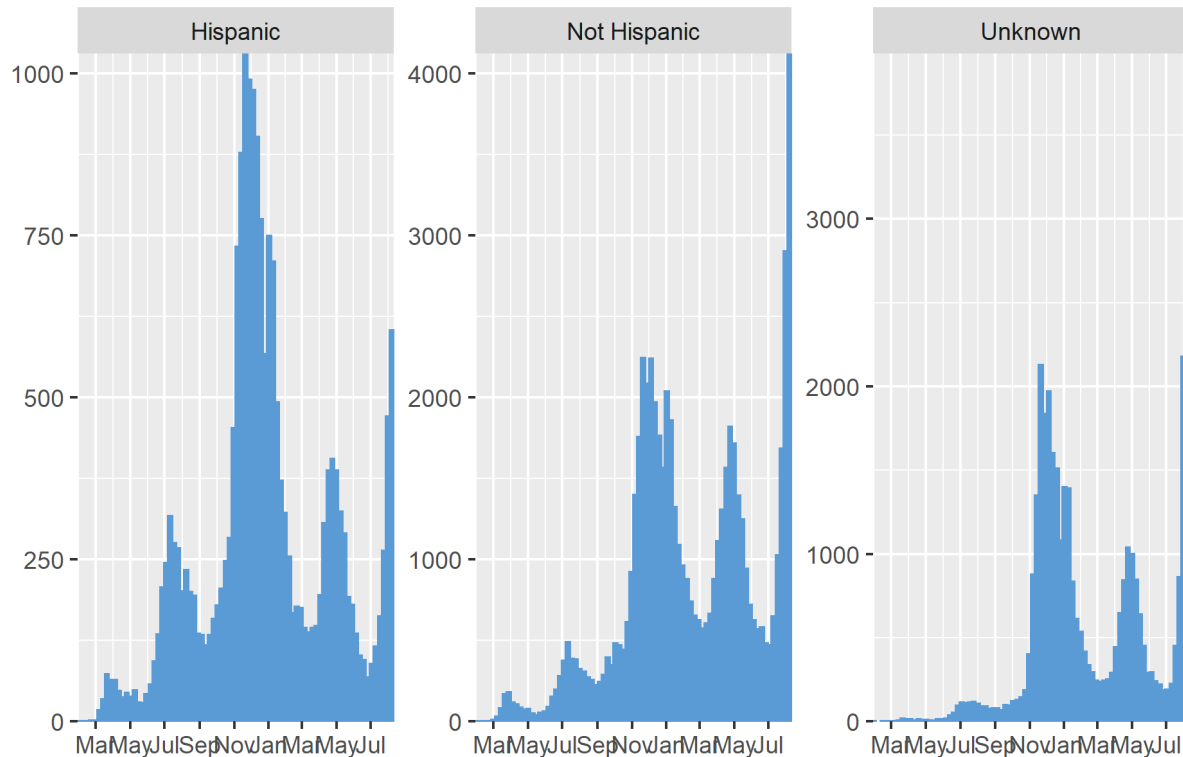


# COVID-19 Weekly Report

Oregon's Weekly Surveillance Summary



Figure 6. All sporadic COVID-19 cases by ethnicity and week of onset



## Clinical symptoms and reported risk factors

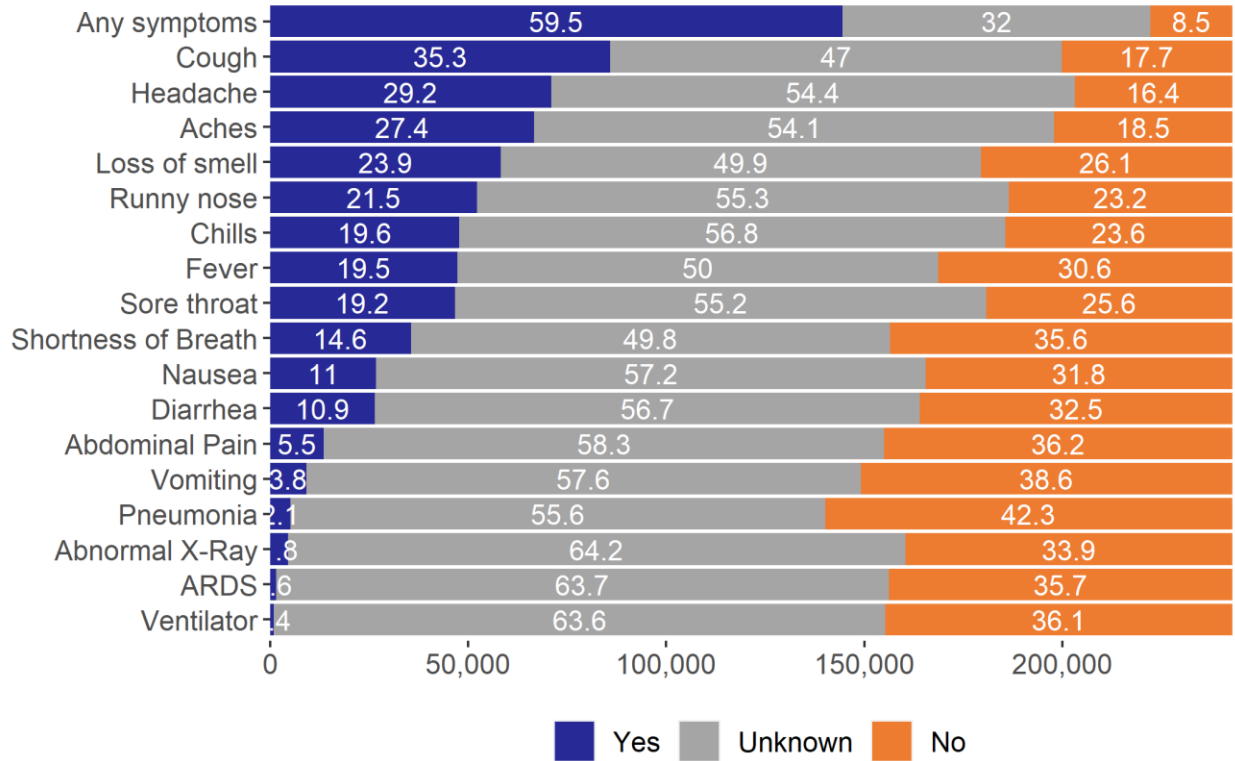
Figure 7 provides information on signs and symptoms from all COVID-19 cases. Of 242,844 cases, 144,432 (59.5%) reported having signs and symptoms of COVID-19. The most commonly reported symptoms are cough (n=85,818, 35.3%) and headache (n=70,917, 29.2%). Figure 8 provides information on the percentage of COVID-19 cases that report symptoms over time. Figure 9 provides information on risk factors from all COVID-19 cases. The most common risk factors are having contact with a known COVID-19 case prior to symptom onset (n=120,345, 49.6%) and having underlying medical conditions (n=135,693, 55.9%). Note that a person may report more than one sign/symptom or risk factor. Where displayed by week in this report, case data are categorized by week of reported symptom onset, not by date of case report. This results in reduced numbers in the most recent week or more due to reporting lags.

# COVID-19 Weekly Report

Oregon's Weekly Surveillance Summary



Figure 7. Reported signs and symptoms for all COVID-19 cases

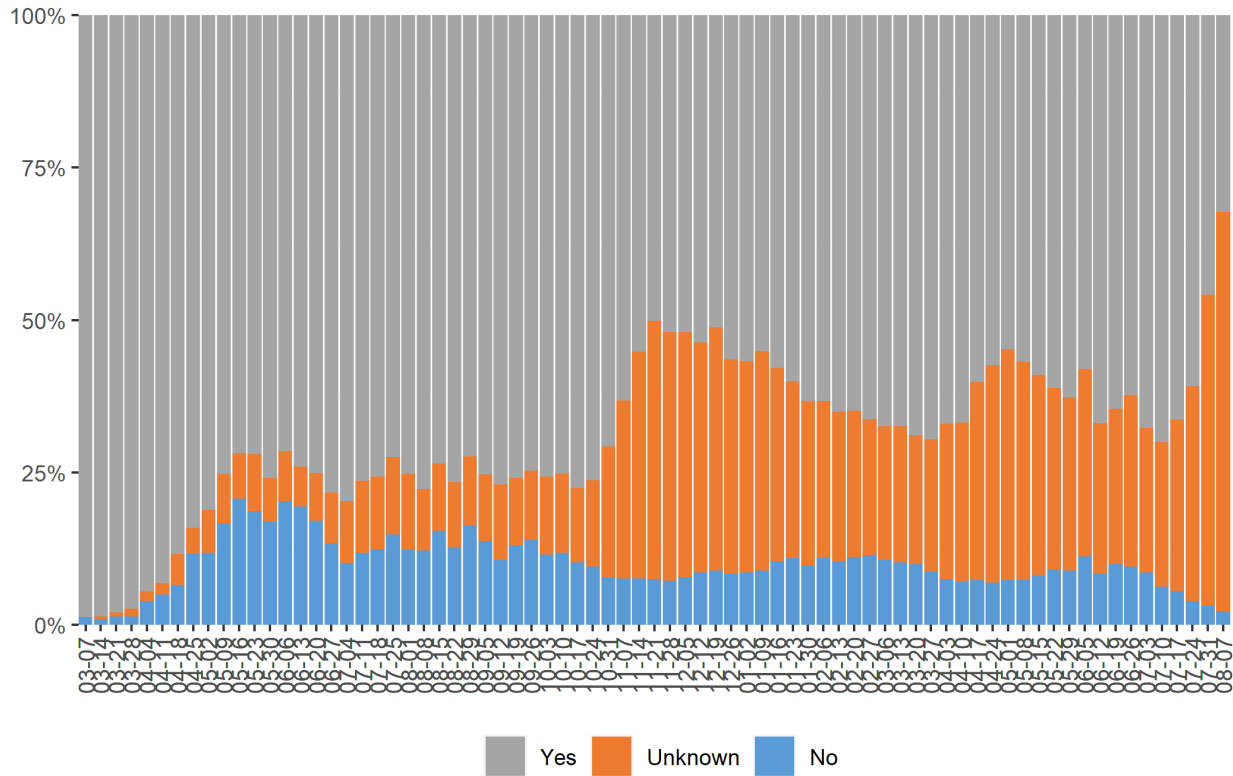


# COVID-19 Weekly Report

Oregon's Weekly Surveillance Summary



Figure 8. Reported symptoms among all COVID-19 cases by week of onset

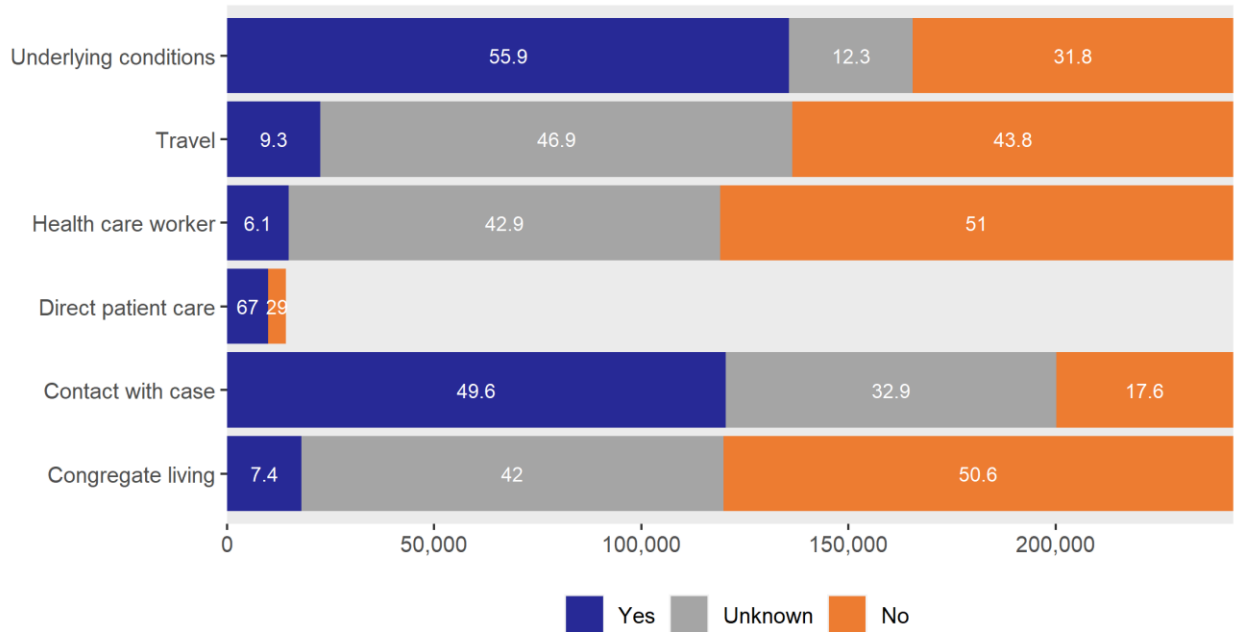


# COVID-19 Weekly Report

Oregon's Weekly Surveillance Summary



**Figure 9. Reported risk factors among all COVID-19 cases**



**Risk factor definitions:**

- Congregate living situations include, but are not limited to, long-term care facilities, group homes, prisons, and shelters. Data include people with confirmed cases who live or work in congregate living situations.
- Direct patient care is only asked if a case is a healthcare worker or volunteer. The denominator is the number of healthcare workers or volunteers.
- Underlying medical conditions include cardiovascular disease, chronic liver disease, chronic lung disease, chronic renal disease, current or former smoker, diabetes mellitus, immunocompromised condition, neurologic and neurodevelopmental conditions, obesity, or other chronic diseases.

**Demographics**

The following tables and figures show the demographic characteristics for all COVID-19 cases. The tables show case counts, case rates, and indicators of severity by sex, age, race and

# COVID-19 Weekly Report

Oregon's Weekly Surveillance Summary

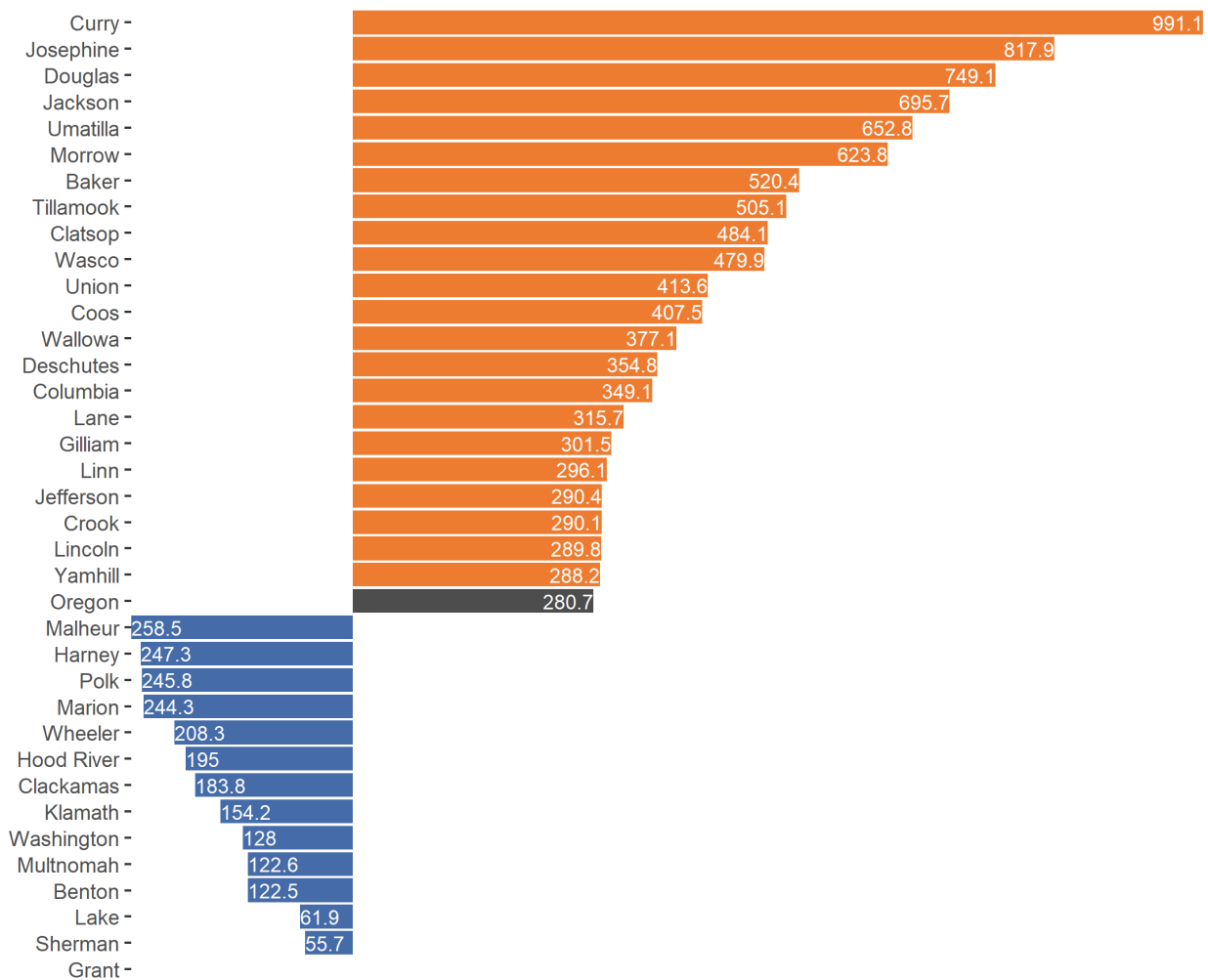


ethnicity. The figures show cases over time, by week of onset, for sex, age, race, and ethnicity. Figure 10 displays case rates by county, in comparison to the case rate for all of Oregon.

## Geography

The following figure shows case rates by county for the most recently completed MMWR week, which is currently August 8 to August 14, 2021. Cases are displayed using the date that the case became known to public health.

**Figure 10. Case rates per 100,000 population, by county**



# COVID-19 Weekly Report

Oregon's Weekly Surveillance Summary



1. Counties that had case rates above the case rate for the state are displayed in orange. Counties that had case rates below the case rate for the state are displayed in blue.
2. Counties that had zero cases in the time period displayed appear on the list, but do not have a bar to display.

## Sex

**Table 1. Severity and rates of COVID-19 by sex**

Sex	Cases	% of total cases	Cases per 100,000	Hospitalized	% Hospitalized	Deaths	Case fatality
Female	123,087	50.7	5,690.8	6,245	5.1	1,346	1.1
Male	116,709	48.1	5,544.0	6,940	5.9	1,591	1.4
Non-Binary	20	0.0		0	0.0	0	0.0
Not Available	3,028	1.2		85	2.8	12	0.4
Total	242,844	100.0	5,689.8	13,270	5.5	2,949	1.2

1. Rates are calculated using population estimates from the 2020 Annual Population Report from Portland State University's College of Urban & Public Affairs Population Research Center and 2019 housing and demographic data from the U.S. Census Bureau's American Community Survey (ACS).

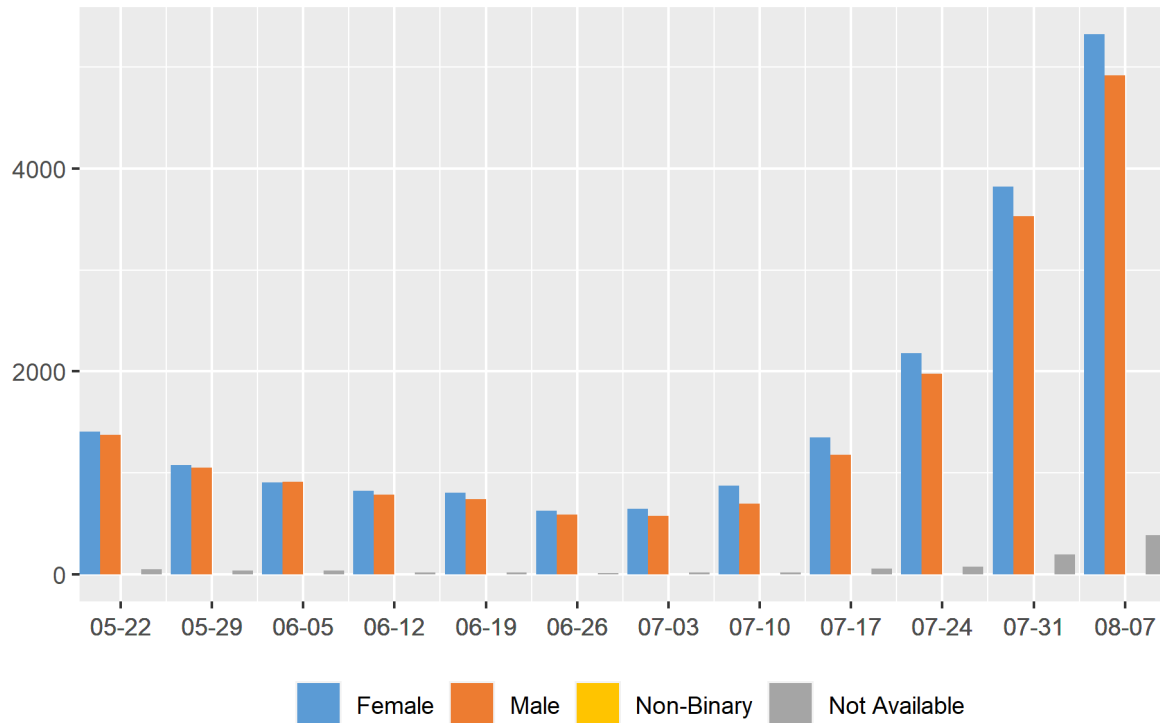


# COVID-19 Weekly Report

Oregon's Weekly Surveillance Summary



Figure 11. Recent COVID-19 cases by sex and week of onset

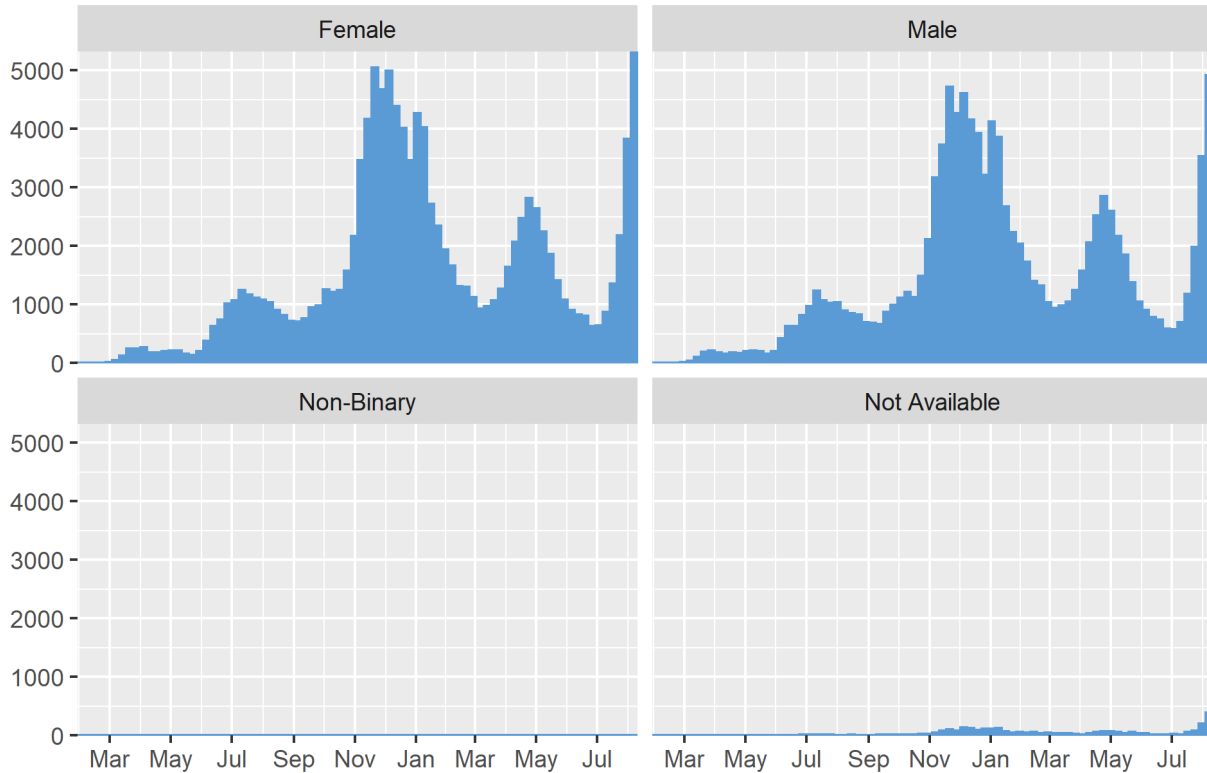


# COVID-19 Weekly Report

Oregon's Weekly Surveillance Summary



Figure 12. All COVID-19 cases by sex and week of onset



# COVID-19 Weekly Report

Oregon's Weekly Surveillance Summary



## Age

**Table 2. Severity and rates of COVID-19 by age**

Age group	Cases	% of total cases	Cases per 100,000	Hospitalized	% Hospitalized	Deaths	Case fatality
0-9	13,998	5.8	2,985.3	157	1.1	1	0.0
10-19	27,111	11.2	5,372.4	225	0.8	3	0.0
20-29	50,595	20.8	9,187.5	834	1.6	11	0.0
30-39	42,634	17.6	7,192.3	1,068	2.5	29	0.1
40-49	36,955	15.2	6,849.1	1,416	3.8	81	0.2
50-59	30,852	12.7	5,779.4	2,098	6.8	206	0.7
60-69	20,753	8.5	3,789.2	2,575	12.4	456	2.2
70-79	11,861	4.9	3,371.0	2,590	21.8	704	5.9
80+	7,760	3.2	4,356.3	2,304	29.7	1,458	18.8
Not Available	325	0.1		3	0.9	0	0.0
Total	242,844	100.0	5,689.8	13,270	5.5	2,949	1.2

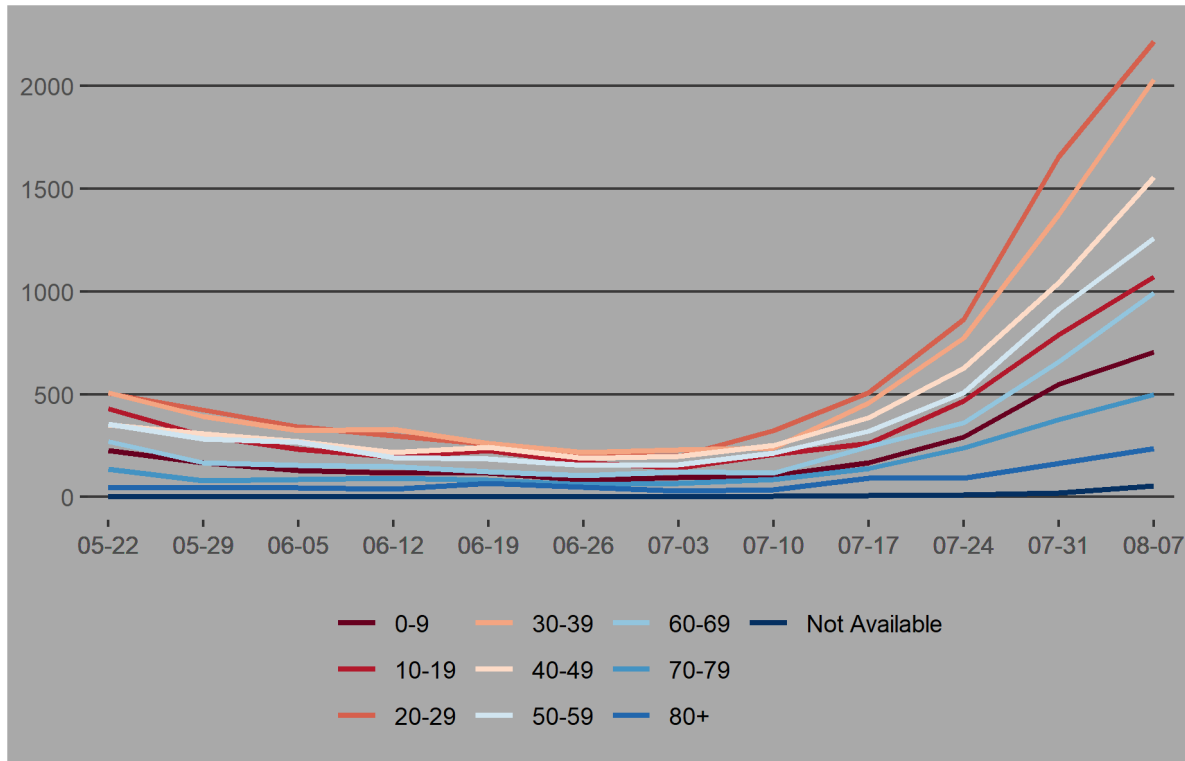
1. Rates are calculated using population estimates from the 2020 Annual Population Report from Portland State University's College of Urban & Public Affairs Population Research Center and 2019 housing and demographic data from the U.S. Census Bureau's American Community Survey (ACS).

# COVID-19 Weekly Report

Oregon's Weekly Surveillance Summary



Figure 13. Recent COVID-19 cases by age and week of onset

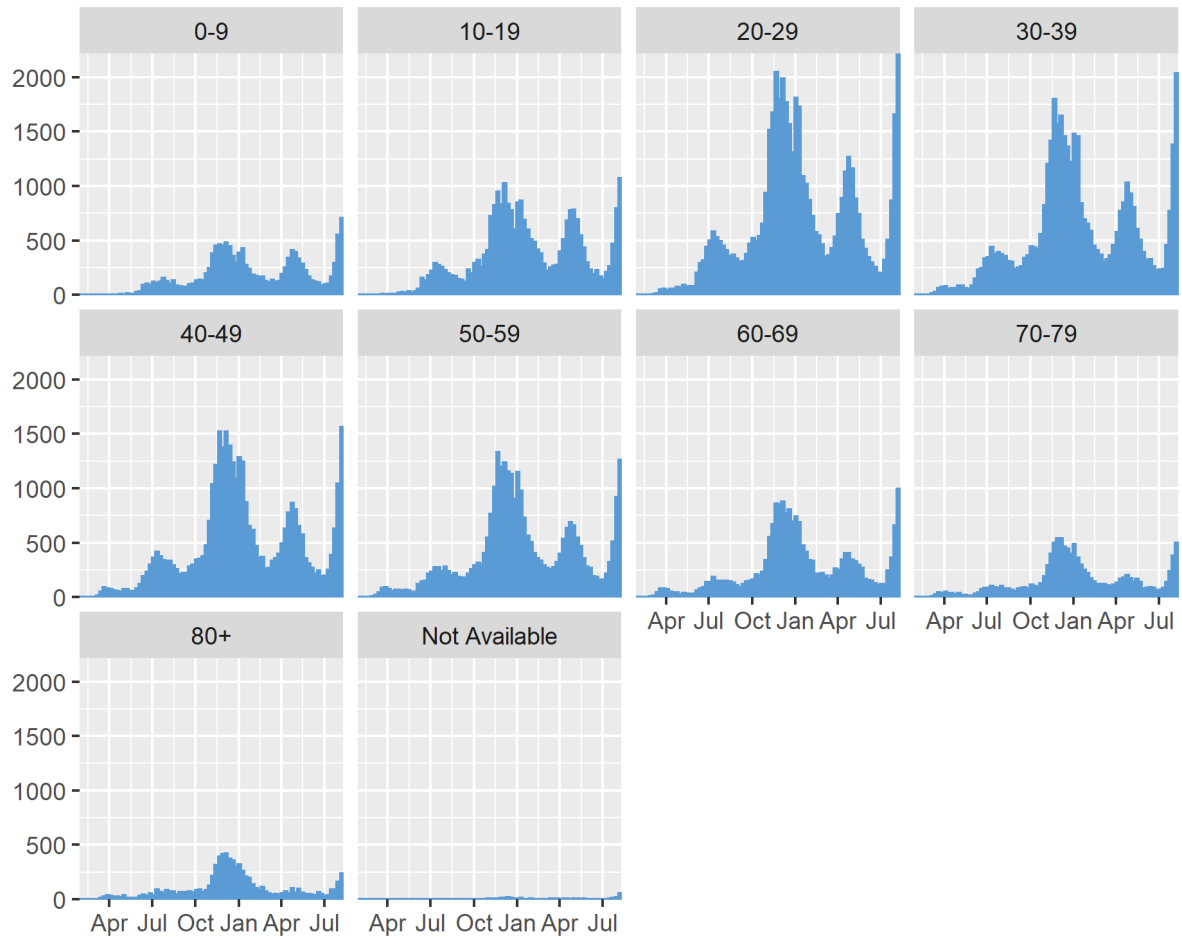


# COVID-19 Weekly Report

Oregon's Weekly Surveillance Summary



Figure 14. All COVID-19 cases (counts) by age and week of onset



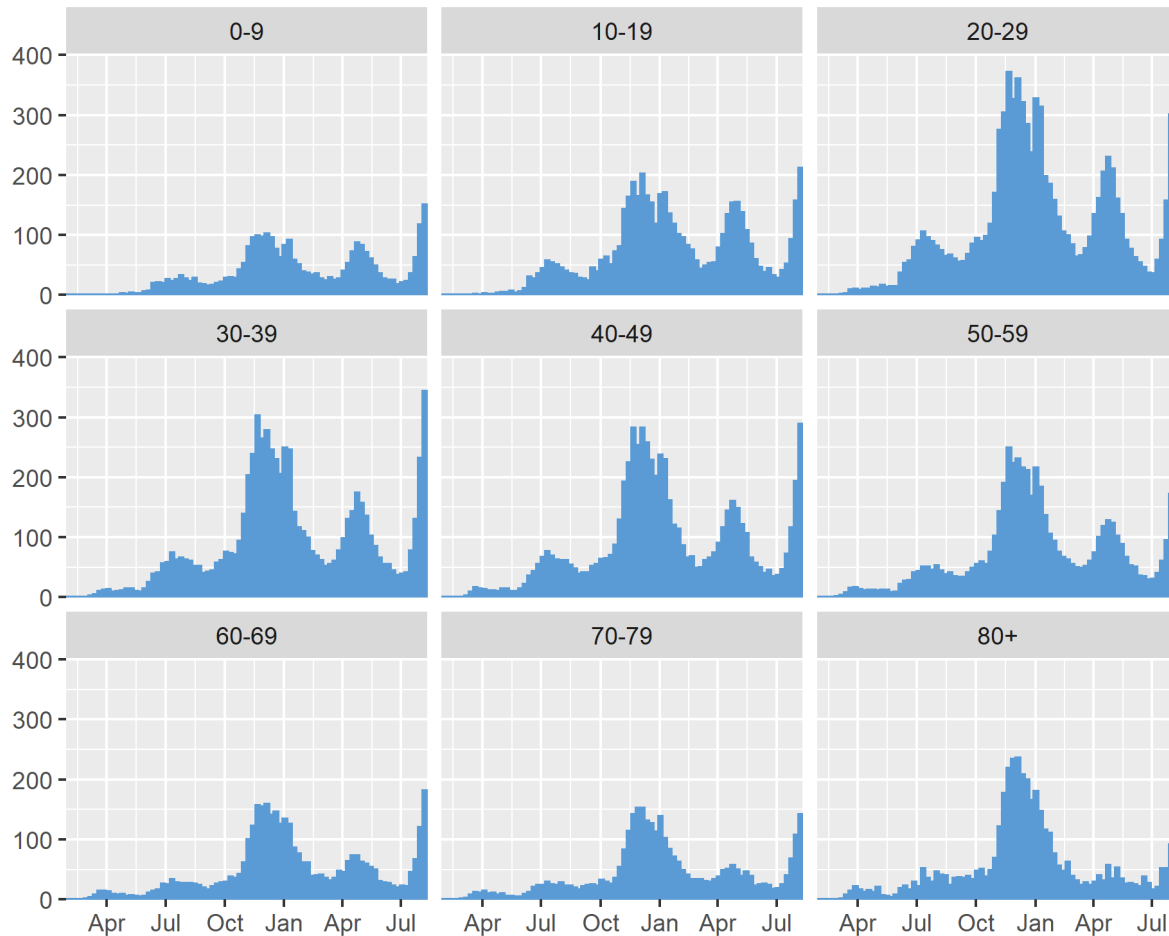
Data are provisional and subject to change.

# COVID-19 Weekly Report

Oregon's Weekly Surveillance Summary



Figure 15. All COVID-19 cases (case rate per 100,000) by age and week of onset



Data are provisional and subject to change.

# COVID-19 Weekly Report

Oregon's Weekly Surveillance Summary



## Race

**Table 3. Severity and rates of COVID-19 by race**

Race	Cases	% of total cases	Cases per 100,000	Hospitalized	% Hospitalized	Deaths	Case fatality
> 1 race	4,149	1.7	2,024.0	223	5.4	45	1.1
American Indian/Alaska Native	4,381	1.8	8,820.4	315	7.2	57	1.3
Asian	6,536	2.7	3,502.2	390	6.0	67	1.0
Black	6,258	2.6	7,696.2	444	7.1	59	0.9
Not Available	45,875	18.9		1,252	2.7	454	1.0
Other	44,956	18.5		2,078	4.6	231	0.5
Pacific Islander	1,858	0.8	10,813.9	175	9.4	22	1.2
White	128,831	53.1	3,581.2	8,393	6.5	2,014	1.6
Total	242,844	100.0	5,689.8	13,270	5.5	2,949	1.2

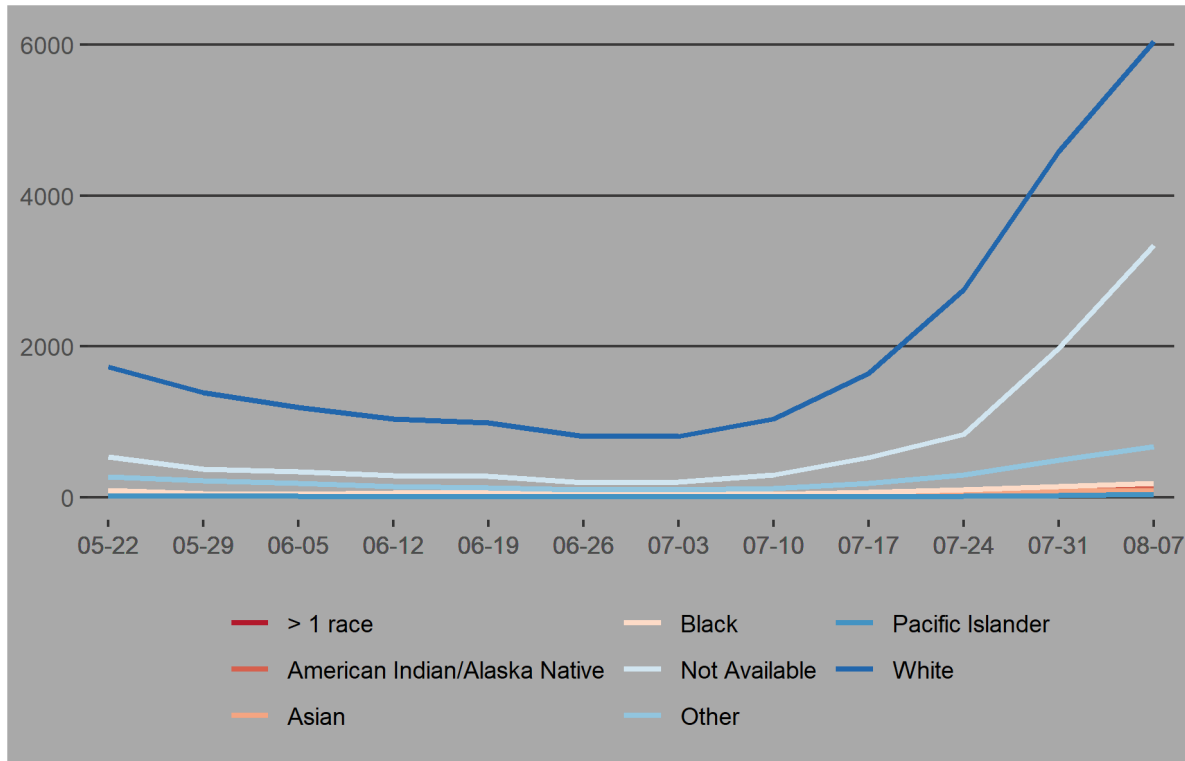
1. During the case investigation, people are asked to self-report their race, ethnicity, tribal affiliation, country of origin, or ancestry.
2. Rates are calculated using population estimates from the 2020 Annual Population Report from Portland State University's College of Urban & Public Affairs Population Research Center and 2019 housing and demographic data from the U.S. Census Bureau's American Community Survey (ACS).
3. Persons for which race information was not available were not included in these estimates. The number of persons with race data unavailable can be found in Table 3.
4. 38,984 (86.7%) of the 44,956 persons who identify as "Other" race also self-identify as Hispanic or Latino.

# COVID-19 Weekly Report

Oregon's Weekly Surveillance Summary



Figure 16. Recent COVID-19 cases by race and week of onset



Data are provisional and subject to change.

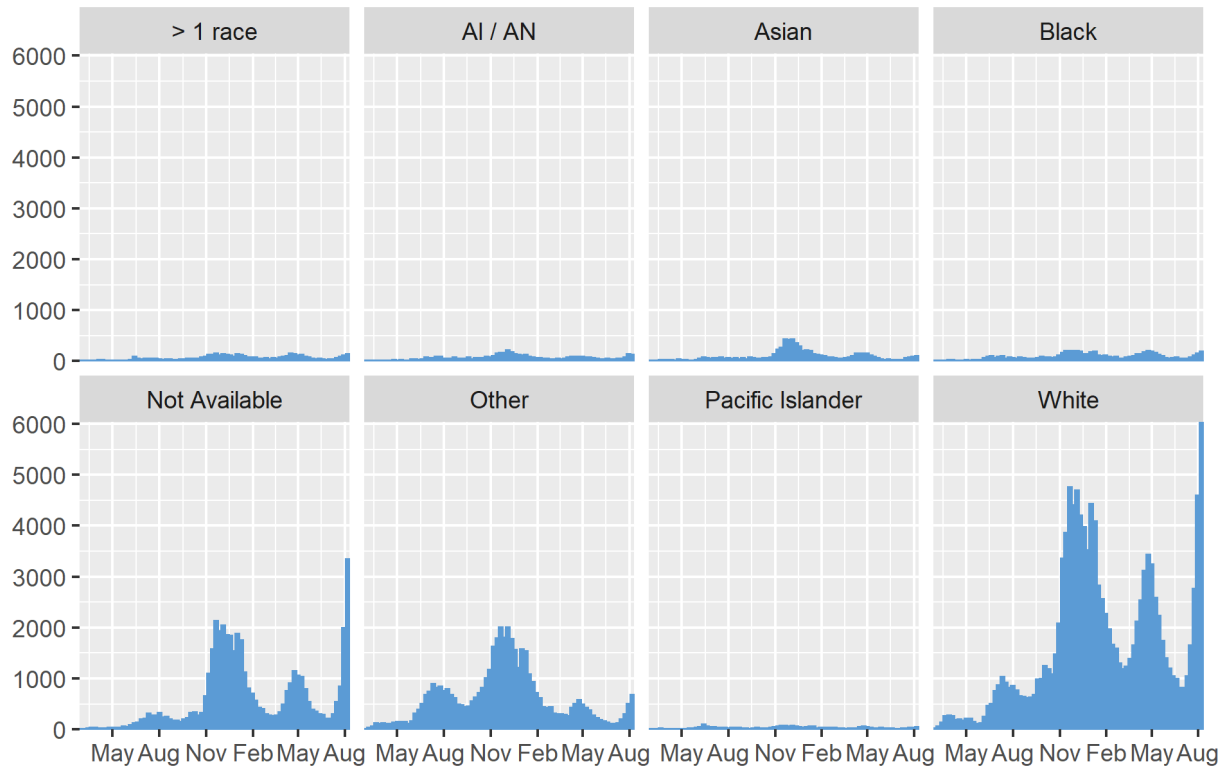


# COVID-19 Weekly Report

Oregon's Weekly Surveillance Summary



Figure 17. All COVID-19 cases (counts) by race and week of onset

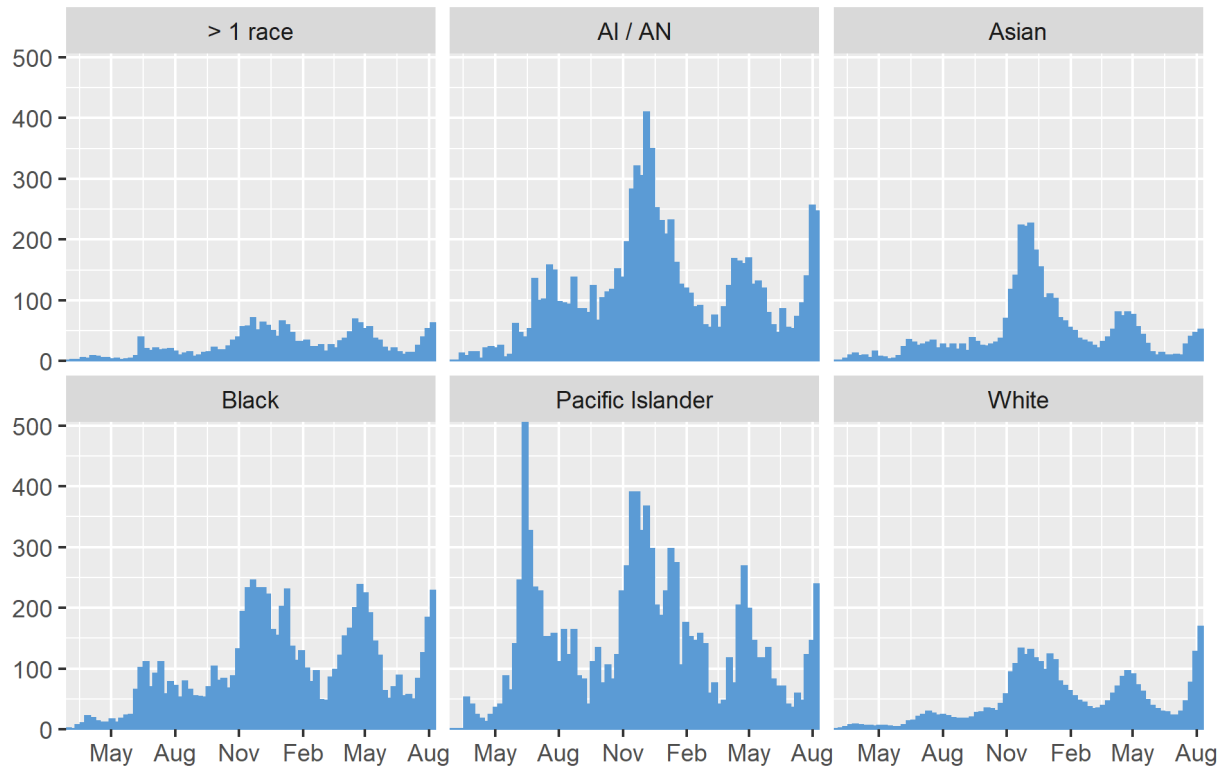


# COVID-19 Weekly Report

Oregon's Weekly Surveillance Summary



Figure 18. All COVID-19 cases (case rates per 100,000) by race and week of onset



## Ethnicity

Table 4. Severity and rates of COVID-19 by ethnicity

Ethnicity	Cases	% of total cases	Cases per 100,000	Hospitalized	% Hospitalized	Deaths	Case fatality rate
Hispanic	51,740	21.3	9,325.1	2,259	4.4	237	0.5
Not Hispanic	129,608	53.4	3,490.5	8,444	6.5	1,914	1.5
Unknown	61,496	25.3		2,567	4.2	798	1.3
Total	242,844	100.0	5,689.8	13,270	5.5	2,949	1.2

Data are provisional and subject to change.

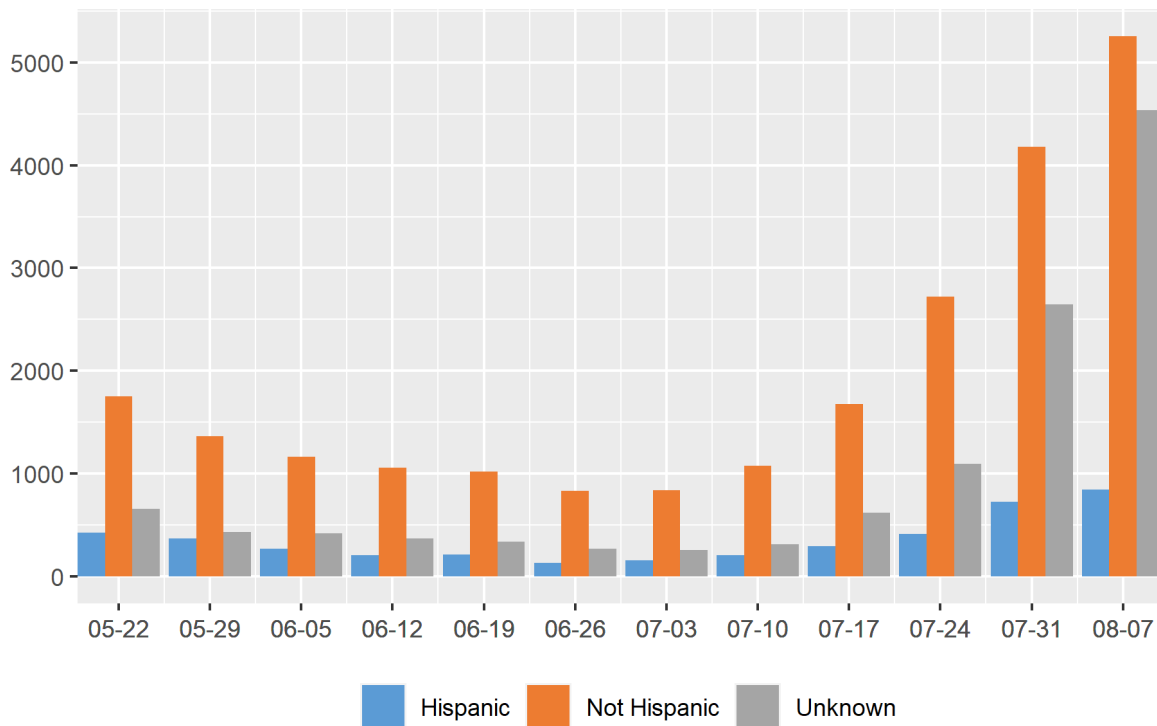
# COVID-19 Weekly Report

Oregon's Weekly Surveillance Summary



1. Rates are calculated using population estimates from the 2020 Annual Population Report from Portland State University's College of Urban & Public Affairs Population Research Center and 2019 housing and demographic data from the U.S. Census Bureau's American Community Survey (ACS).

**Figure 19. Recent COVID-19 cases by ethnicity and week of onset**

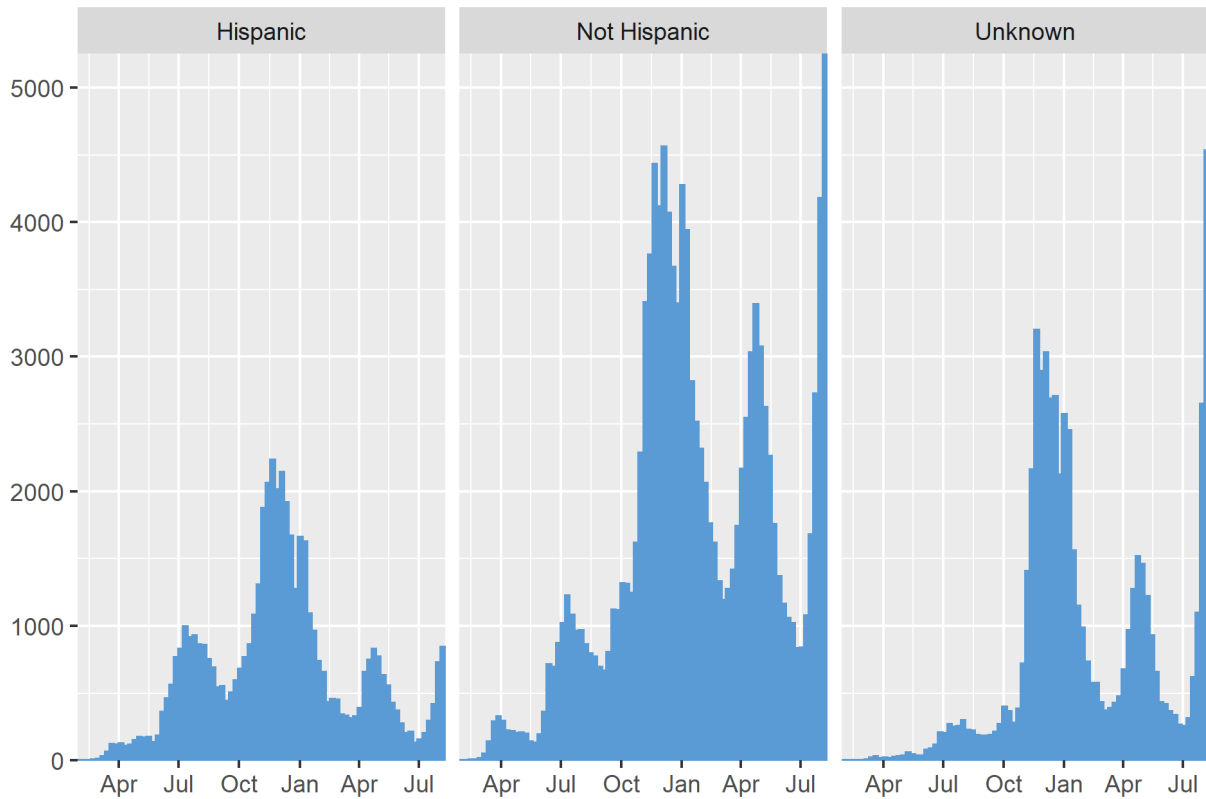


# COVID-19 Weekly Report

Oregon's Weekly Surveillance Summary



Figure 20. All COVID-19 cases by ethnicity (counts) and week of onset

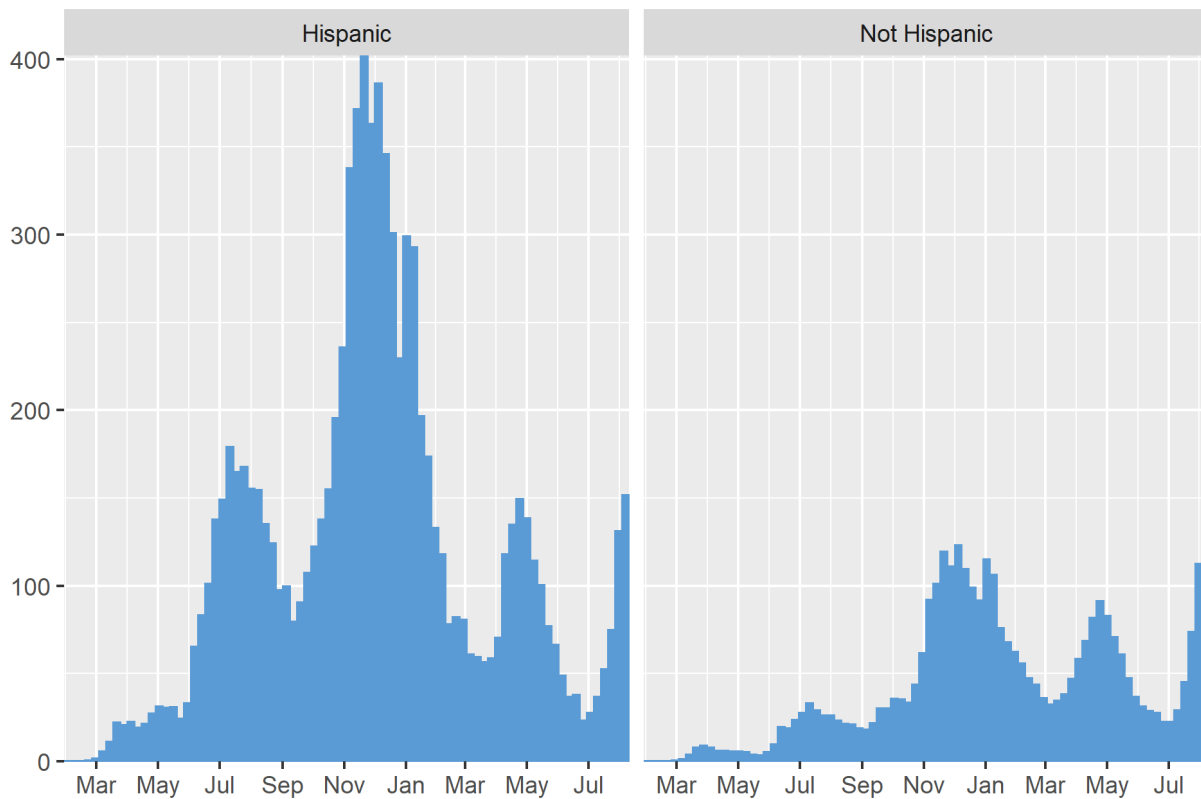


# COVID-19 Weekly Report

Oregon's Weekly Surveillance Summary



**Figure 21. All COVID-19 cases by ethnicity (case rates per 100,000) and week of onset**



## Age-adjustment

Tables 5 and 6 show the ratio of age-adjusted rates of COVID-19 for cases, hospitalizations, and deaths by race and ethnicity. Each table compares the rates of cases, hospitalizations, and deaths between each group and a reference group and accounts for differences in population distributions in each group.

### Table 5. Ratio of age-adjusted rates for cases, hospitalizations, and deaths by race

Age-adjusted rate ratios of cases, hospitalizations, and deaths, compared to white persons

# COVID-19 Weekly Report

Oregon's Weekly Surveillance Summary



Race	Cases	Hospitalizations	Deaths
> 1 race	0.6	1.0	1.2
American Indian/Alaska Native	2.4	3.3	3.2
Asian	0.9	1.2	1.1
Black	2.0	3.3	2.6
Pacific Islander	3.0	7.6	7.3
White	1.0	1.0	1.0

1. During the case investigation, people are asked to self-report their race, ethnicity, tribal affiliation, country of origin, or ancestry.
2. U.S. Census Bureau; American Community Survey, 2019 American Community Survey 5-Year Estimates.
3. Persons for which race information was not available were not included in these estimates. The number of persons with race data unavailable can be found in Table 3.

**Table 6. Ratio of age-adjusted rates for cases, hospitalizations, and deaths by ethnicity**

Age-adjusted rate ratios of cases, hospitalizations, and deaths, compared to non-Hispanic

Ethnicity	Cases	Hospitalizations	Deaths
Hispanic	2.4	3.2	2.6
Non-Hispanic	1.0	1.0	1.0

1. During the case investigation, people are asked to self-report their race, ethnicity, tribal affiliation, country of origin, or ancestry.
2. U.S. Census Bureau; American Community Survey, 2019 American Community Survey 5-Year Estimates.
3. Persons for which ethnicity information was not available were not included in these estimates. The number of persons with ethnicity data unavailable can be found in Table 4.

# COVID-19 Weekly Report

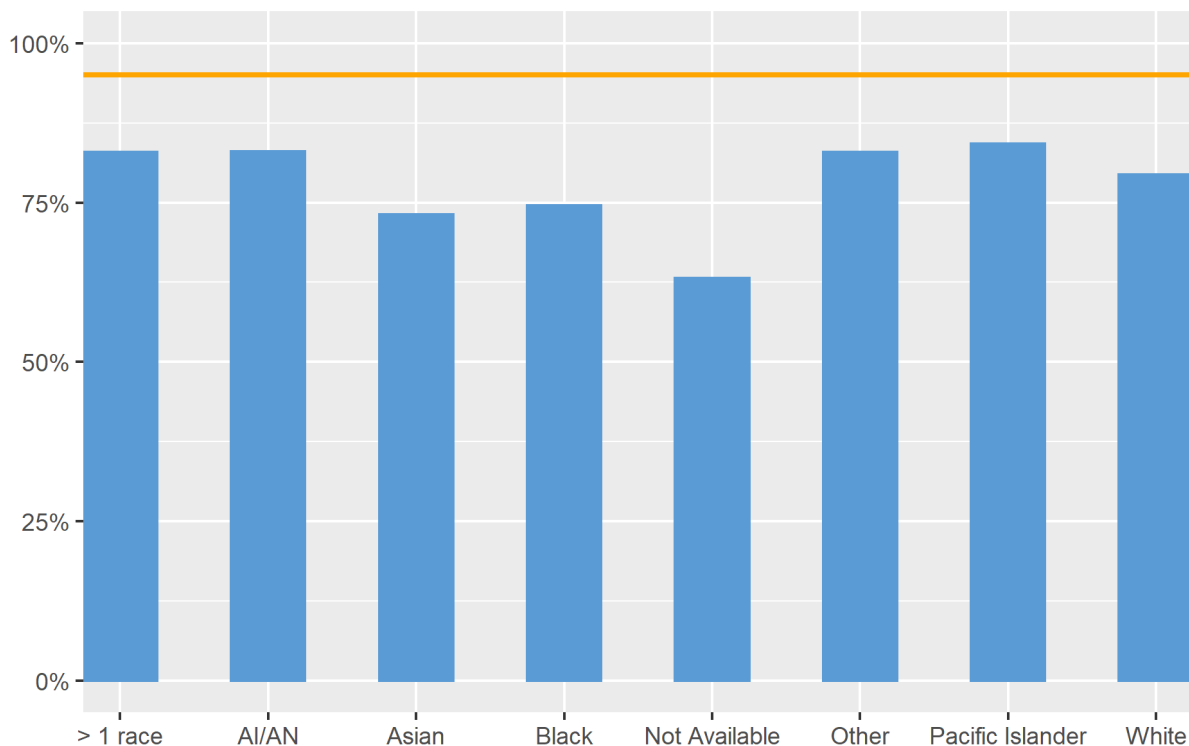
Oregon's Weekly Surveillance Summary



## Follow-up

Figure 22 shows the percentage of cases that were called within 24 hours of being reported to public health by race. Figure 23 shows the percentage of cases that were called within 24 hours of being reported to public health by ethnicity. Figure 24 shows the percentage of cases that were interviewed, by race. Figure 25 shows the percentage of cases that were interviewed, by ethnicity. Race and ethnicity data are collected when cases are interviewed. Race and ethnicity data for cases that were not interviewed are abstracted from laboratory reports and medical records if it is available. The orange line in figures 22 and 23 represents the state metric for timely follow up for all cases: 95%.

**Figure 22. Follow up attempted within 24 hours, % by race**

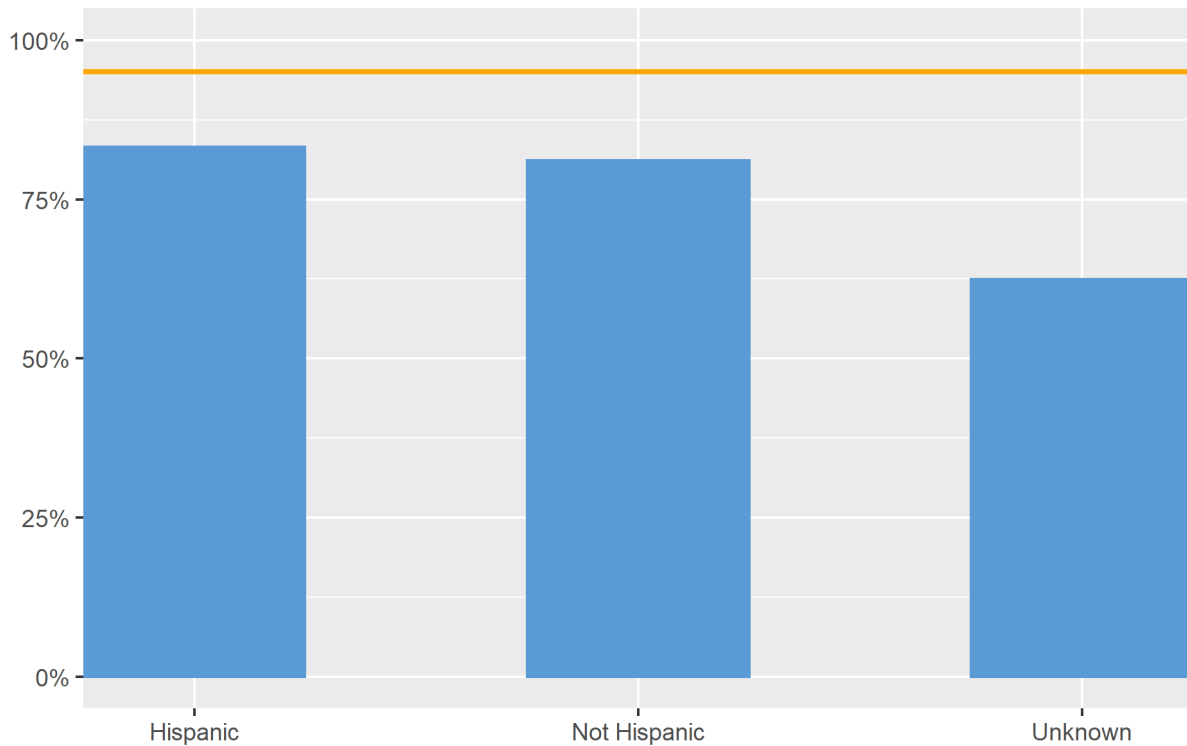


# COVID-19 Weekly Report

Oregon's Weekly Surveillance Summary



Figure 23. Follow up attempted within 24 hours, % by ethnicity



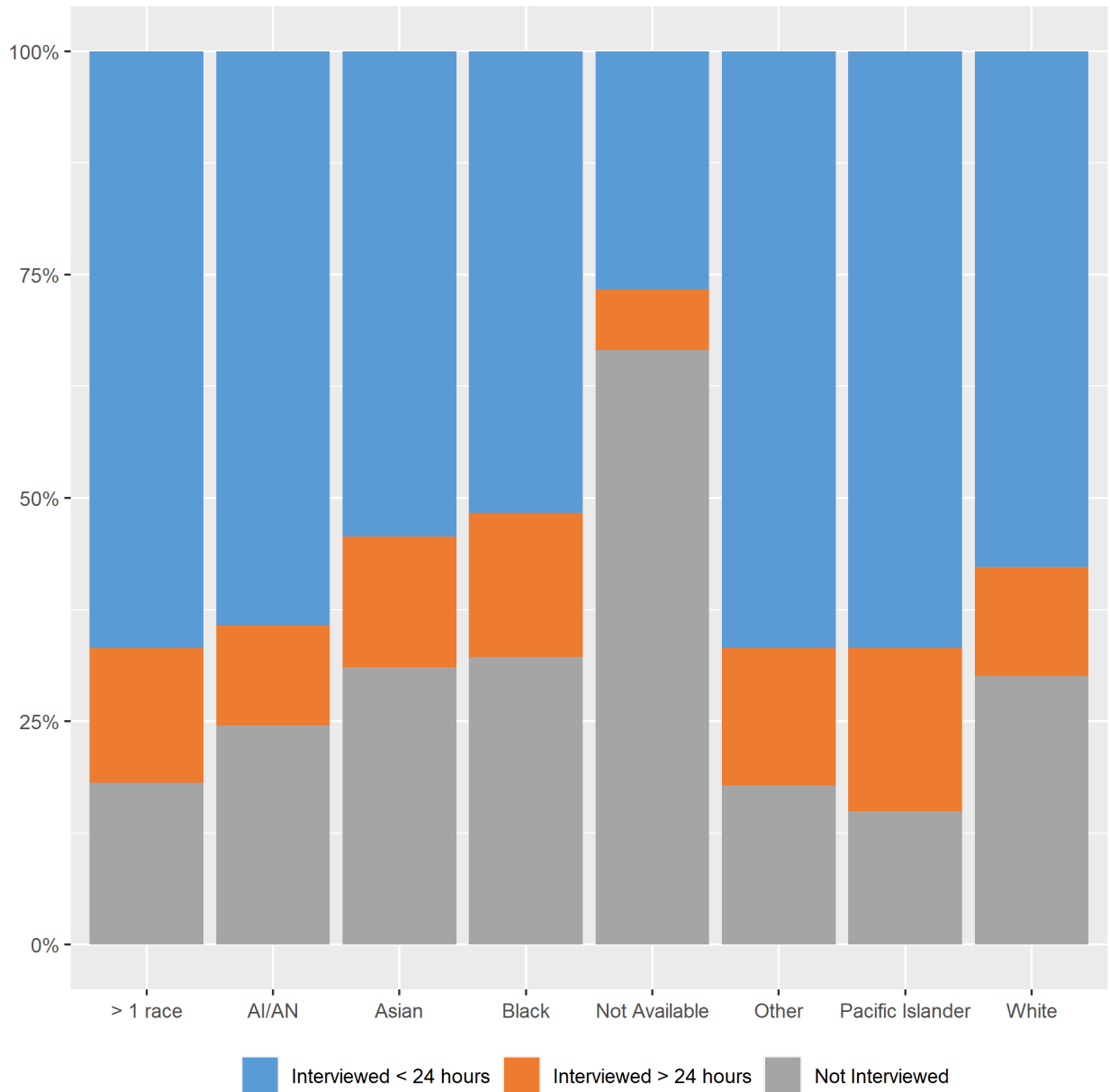


# COVID-19 Weekly Report

Oregon's Weekly Surveillance Summary



Figure 24. Cases interviewed, by race



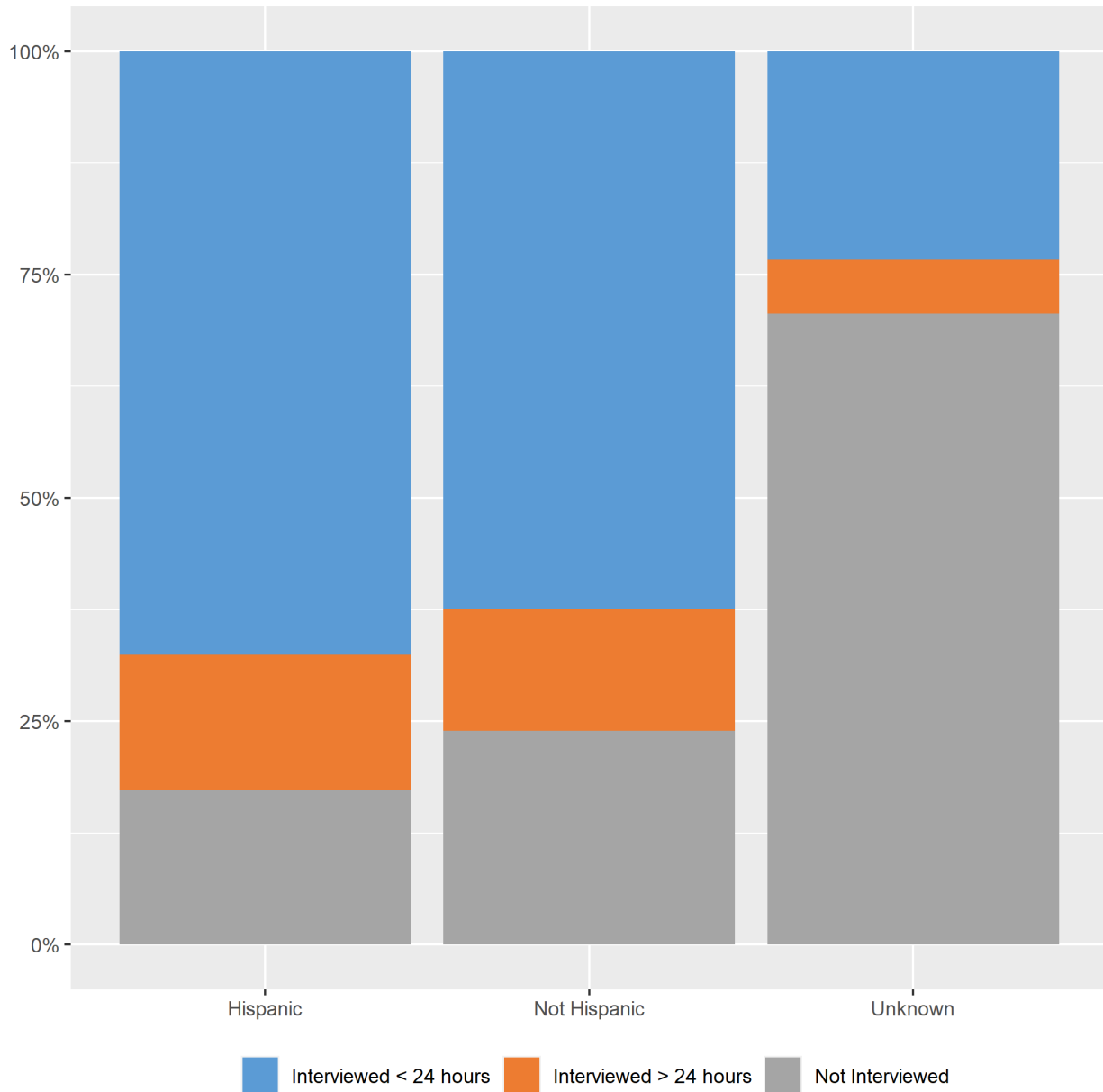
Data are provisional and subject to change.

# COVID-19 Weekly Report

Oregon's Weekly Surveillance Summary



Figure 25. Cases interviewed, by ethnicity



Data are provisional and subject to change.

# COVID-19 Weekly Report

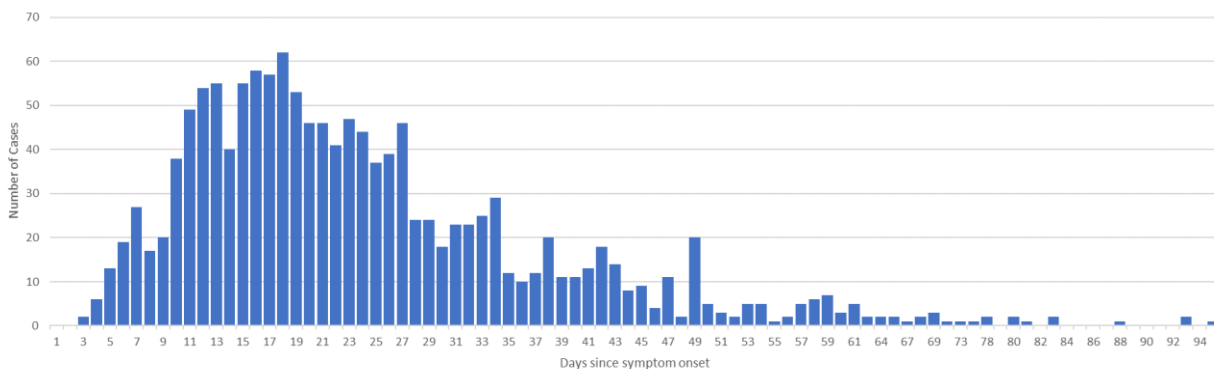
Oregon's Weekly Surveillance Summary



## Recovery

OHA staff periodically call people with reported COVID-19 who experienced fever, cough, shortness of breath or diarrhea and were initially interviewed before May 1, 2020, when OHA changed its definition of recovery, to inquire about resolution of symptoms. This group includes 1,884 people who were all diagnosed before mid-April and have not succumbed to their illness. Among these, 1,682 (88.8%) are considered to have recovered, and a recovery date is available for 1,387 people; their time to recovery is depicted in Figure 26. Of these 1,884 people, 16 (0.8%), have not yet recovered; and recovery status is not available for 186 (9.8%). People are assumed to have recovered three days after resolution of all symptoms. The median time to recovery among non-hospitalized symptomatic cases is 20 days (interquartile range: 15–29 days); among symptomatic cases who were hospitalized it is 26 days (interquartile range: 18–37 days).

**Figure 26. Time to recovery among symptomatic people with COVID-19**



### Notes about recovery data:

- Recovery definition: three days after reported resolution of diarrhea, cough, shortness of breath and fever.
- Inclusion criteria: cases who were interviewed about their date of recovery before a change in recovery definition on May 1
- Data for 1,387 cases are included
- This was last updated on 9/16; Data will be updated again as new information is available.

# COVID-19 Weekly Report

Oregon's Weekly Surveillance Summary



## People with Intellectual and Developmental Disabilities

As of June 2, 2021 OHA is aware of 945 people with intellectual or developmental disabilities who have had COVID-19 to date. This includes individuals who live in congregate settings and in family or individual homes. To date, there are 27 deaths associated with people with intellectual or developmental disabilities. This number is from conducting a match between the ODHS Office of Developmental Disabilities Services client list and the Oregon COVID-19 case database. OHA will update this number on a quarterly basis.

Additional information about the ODDS program and COVID-19 can be found here:

<https://www.oregon.gov/dhs/SENIORS-DISABILITIES/DD/ODDS%20Resource%20Library/ODDS-Residential-COVID-19-Report.pdf>

ODDS data is based on self-reports from providers and case management entities and therefore may differ from testing data received from the Oregon Health Authority.

## Weekly COVID-19 Hospitalizations (HOSCAP)

OHA is publishing data on the number of COVID-19 hospitalizations by hospital in the prior week; data are from HOSCAP. Table 7 lists all hospitals which, at some time during the week reported, had 10 or more suspected/confirmed COVID-19 patients. The left column shows the highest number of suspected and confirmed COVID-19 hospitalized patients for each hospital between 08/09/2021 and 08/15/2021. The right column shows the highest number of confirmed COVID-19 patients hospitalized during the same time period.

**Table 7. Hospitals reporting 10 or more COVID-19 patients.**

Hospital	Maximum Patients (both suspected and confirmed)	Maximum Patients (confirmed only)
Salem Health Hospital	85	83
Asante Rogue Regional Medical Center	71	71
Asante Three Rivers Medical Center	54	54
PeaceHealth Sacred Heart MC at Riverbend	51	51
Providence Portland Medical Center	51	51

Data are provisional and subject to change.

# COVID-19 Weekly Report

Oregon's Weekly Surveillance Summary



Hospital	Maximum Patients (both suspected and confirmed)	Maximum Patients (confirmed only)
St. Charles Bend	51	47
Mercy Medical Center	49	49
Providence St. Vincent Medical Center	39	39
OHSU Hospital	31	25
Kaiser Permanente Sunnyside Medical Center	26	26
Providence Medford Medical Center	23	23
Legacy Emanuel Medical Center	22	20
Asante Ashland Community Hospital	21	21
Adventist Health Portland	19	19
McKenzie-Willamette Medical Center	18	18
Legacy Mount Hood Medical Center	16	16
Good Samaritan Regional Medical Center	15	15
Kaiser Permanente Westside Medical Center	15	15
Legacy Meridian Park Hospital	14	14
Bay Area Hospital	12	12
Good Shepherd Health Care System	12	12
VA Portland Health Care System	12	12
Hillsboro Medical Center	12	10

The hospitals listed in Table 8 reported 1–9 suspected or confirmed COVID-19 patients 08/09/2021 through 08/15/2021. Hospitals not listed in either table did not report any suspected or confirmed patients during the week.

# COVID-19 Weekly Report

Oregon's Weekly Surveillance Summary



**Table 8. Hospitals reporting 1–9 COVID-19 patients.**

<b>Hospital</b>
Adventist Health Tillamook
Columbia Memorial Hospital
Coquille Valley Hospital
Curry General Hospital
Grande Ronde Hospital
Harney District Hospital
Legacy Good Samaritan Medical Center
Legacy Silverton Medical Center
Mid-Columbia Medical Center
OHSU Doernbecher Children's Hospital
Providence Hood River Memorial Hospital
Providence Milwaukie Hospital
Providence Newberg Medical Center
Providence Seaside Hospital
Providence Willamette Falls Medical Center
Randall Children's Hospital at Legacy Emanuel
Samaritan Albany General Hospital
Samaritan Lebanon Community Hospital
Samaritan North Lincoln Hospital
Samaritan Pacific Communities Hospital
Santiam Hospital
Sky Lakes Medical Center
Southern Coos Hospital and Health Center

Data are provisional and subject to change.

# COVID-19 Weekly Report

Oregon's Weekly Surveillance Summary



Hospital
St. Alphonsus Medical Center - Ontario
St. Anthony Hospital
St. Charles Madras
St. Charles Prineville
St. Charles Redmond
Wallowa Memorial Hospital
Willamette Valley Medical Center

## ZIP code

OHA is publishing data on cases at the ZIP code level, available online at:

<https://public.tableau.com/profile/oregon.health.authority.covid.19#!/vizhome/OregonCOVID-19CasesbyZIPCode/OregonsCOVID-19CasesbyZipCode?publish=yes>

Summary table of all zip codes available here:

<https://public.tableau.com/profile/oregon.health.authority.covid.19#!/vizhome/OregonCOVID-19CasesbyZIPCode-SummaryTable/CasesbyZIPCodeSummaryTable?publish=yes>

**Document accessibility:** For individuals with disabilities or individuals who speak a language other than English, OHA can provide information in alternate formats such as translations, large print, or braille. Contact the Health Information Center at 1-971-673-2411, 711 TTY or [COVID19.LanguageAccess@dhsosha.state.or.us](mailto:COVID19.LanguageAccess@dhsosha.state.or.us).