

COVID-19 Weekly Report

Oregon's Weekly Surveillance Summary



Weekly Data Report - December 29, 2021

Table of Contents

Background	3
Weekly Report Summary	4
Clinical Characteristics and risk factors.....	5
Epidemiologic links	5
Figure 1. Epidemiologic link of recent COVID-19 cases by week of onset.....	6
Figure 2. Epidemiologic link of all COVID-19 cases by week of onset	7
Figure 3. Recent sporadic COVID-19 cases by race and week of onset.....	8
Figure 4. All sporadic COVID-19 cases by race and week of onset.....	9
Figure 5. Recent sporadic COVID-19 cases by ethnicity and week of onset	10
Figure 6. All sporadic COVID-19 cases by ethnicity and week of onset.....	11
Clinical symptoms and reported risk factors	11
Figure 7. Reported signs and symptoms for all COVID-19 cases	12
Figure 8. Reported symptoms among all COVID-19 cases by week of onset.....	13
Figure 9. Reported risk factors among all COVID-19 cases.....	14
Demographics.....	14
Geography.....	15
Figure 10. Case rates per 100,000 population, by county	15
Sex	16
Table 1. Severity and rates of COVID-19 by sex.....	16
Figure 11. Recent COVID-19 cases by sex and week of onset	17
Figure 12. All COVID-19 cases by sex and week of onset.....	18
Age	19
Table 2. Severity and rates of COVID-19 by age	19
Figure 13. Recent COVID-19 cases by age and week of onset.....	20
Figure 14. All COVID-19 cases (counts) by age and week of onset.....	21

COVID-19 Weekly Report

Oregon's Weekly Surveillance Summary



Figure 15. All COVID-19 cases (case rate per 100,000) by age and week of onset	22
Race	23
Table 3. Severity and rates of COVID-19 by race	23
Figure 16. Recent COVID-19 cases by race and week of onset	24
Figure 17. All COVID-19 cases (counts) by race and week of onset.....	25
Figure 18. All COVID-19 cases (case rates per 100,000) by race and week of onset	26
Ethnicity	27
Table 4. Severity and rates of COVID-19 by ethnicity	27
Figure 19. Recent COVID-19 cases by ethnicity and week of onset.....	28
Figure 20. All COVID-19 cases (counts) by ethnicity and week of onset	29
Figure 21. All COVID-19 cases (case rates per 100,000) by ethnicity and week of onset	30
Age-adjustment.....	31
Table 5. Ratio of age-adjusted rates for cases, hospitalizations, and deaths by race	31
Table 6. Ratio of age-adjusted rates for cases, hospitalizations, and deaths by ethnicity	32
Follow-up.....	32
Figure 22. Follow up attempted within 24 hours, % by race	33
Figure 23. Follow up attempted within 24 hours, % by ethnicity.....	34
Figure 24. Cases interviewed, by race	35
Figure 25. Cases interviewed, by ethnicity	36
People with Intellectual and Developmental Disabilities.....	37
Weekly COVID-19 Hospitalizations (HOSCAP)	37
ZIP code.....	37

COVID-19 Weekly Report

Oregon's Weekly Surveillance Summary



Background

COVID-19 Weekly Report data will be finalized every Sunday at 11 p.m. PST, and the report will be published on Wednesday. Please note that the data reported here are continually being updated. For daily up-to-date information, visit the OHA COVID-19 web page: <https://govstatus.egov.com/OR-OHA-COVID-19>.

As of 11 p.m. Sunday, December 26, there have been 414,138 cases of COVID-19 reported to the Oregon Health Authority. Of these, 14,910 (3.6%) are “presumptive” cases—i.e., people with COVID-19-like symptoms and close contact with a confirmed case, but who did not have a confirmatory laboratory test. Though not confirmed, presumptive cases are highly likely to have COVID-19, given their specific symptoms and known exposure. Presumptive cases are encouraged to seek testing to confirm that they do have COVID-19. Presumptive cases who test positive are recategorized as confirmed cases.

These data represent a snapshot of COVID-19 risk factors and clinical and demographic characteristics of cases, and they include data on cases with pending investigations. Not all cases have been interviewed at the time of this report. The data shown in this report come from Oregon’s electronic disease surveillance system for reportable diseases.

During the week of December 19–December 25¹ 136,789 tests for COVID-19 were performed on Oregonians; of these, 7.4% had a positive result.² This figure represents a “test-based” method, whereby all electronic lab reports received by OHA are used to calculate percent positivity.³ Detailed tables of the number of tests and percent positivity can be found online at

<https://public.tableau.com/profile/oregon.health.authority.covid.19#!/vizhome/OregonHealthAuthorityCOVID-19DataDashboard/OregonsCOVID-19ELRsbyCounty>.

¹ This date range aligns with CDC’s “MMWR week.”

² Does not include antibody (serology) tests.

³ www.cdc.gov/coronavirus/2019-ncov/lab/resources/calculating-percent-positivity.html

COVID-19 Weekly Report

Oregon's Weekly Surveillance Summary



Weekly Report Summary

During Monday, December 21, through Sunday, December 27, 2021, OHA recorded 6,987 new cases of COVID-19 infection—a 25% jump over the previous week's total. Reported test results fell 7.1%, but the proportion that were positive jumped from 4.8% to 7.4%. Newly reported cases declined 25% from last week to this week among children <10 years old, while cases among those 20–79 years of age rose—in particular among 20–29 -year-olds (90% increase) and 30–39 -year-olds (41% increase).

One hundred eighty-five COVID-19-associated hospitalizations were reported this week—down 35% from last week's 286 and the lowest tally since the week of July 19–25. Eighty-nine COVID-19-associated deaths were reported, down from 114 last week. Of the 414,138 cases reported in Oregon to date, 21,986 (5.3%) have been hospitalized, and 5,623 (1.4%) have died.

COVID-19-associated hospitalization and death rates increase with age (Table 2). About 4.2% of Oregonians are 80 years of age or older; they have accounted for 12,735 (3.1%) of reported cases, but 3,612 (16%) of reported COVID-19-associated hospitalizations and 2,343 (42%) of reported COVID-19-associated deaths. Persons 70 years of age and older make up 12% of Oregon's population; they have accounted for 34,021 (8.2%) of reported cases but 7,906 (36%) of the reported COVID-19-associated hospitalizations and 3,697 (66%) of the reported COVID-19-associated deaths. At the other end of the age spectrum, persons <20 years of age make up 23% of Oregon's population and have accounted for 78,436 (19%) of the reported cases but only 661 (3.0%) of Oregon's COVID-19 associated hospitalizations and 5 (0.09%) of the COVID-19-associated deaths.

Through July 4 of this year, persons ≥ 80 accounted for 50% of COVID-19-associated deaths, but since then the figure has been 33%. The age distribution of fatal cases has changed little since that date. Data on mortality in Oregon, including deaths associated with COVID-19, are available at

<https://public.tableau.com/profile/oha.center.for.health.statistics>.

Additional data are available at

<https://public.tableau.com/profile/oregon.health.authority.covid.19#!/vizhome/OregonCOVID-19CaseDemographicsandDiseaseSeverityStatewide/DemographicData>.

COVID-19 Weekly Report

Oregon's Weekly Surveillance Summary



Clinical Characteristics and risk factors

This section of the report describes the epidemiology of Oregon's COVID-19 cases, including indicators of COVID-19 transmission, common symptoms experienced by COVID-19 cases, and demographic breakdowns for sex, age, race, and ethnicity. Indicators of disease severity, specifically hospitalizations and deaths, are included in the tables.

Epidemiologic links

The figures below show the epidemiologic link of COVID-19 cases. Public health classifies all cases as part of a household, part of an outbreak, part of a cluster, a close contact of another case, or sporadic. Sporadic indicates that a case was not linked to a known source of COVID-19. Lower numbers of sporadic cases suggest lower community spread of COVID-19. Figure 1 focuses on recent cases of COVID-19, and allows for the easy comparison of different types of epidemiologic link. Figure 2 includes all COVID-19 cases, showing the pattern of epidemiologic links since the first cases were identified in Oregon. Figures 3 and 4 show sporadic cases by race, and figures 5 and 6 show sporadic cases by ethnicity. Looking at the data by race and ethnicity helps public health to identify disparities.

Epidemiologic link designations:

- Sporadic:⁴ Cases who do not have known exposure to another case or outbreak.
- Outbreak: Cases who have a shared, defined exposure with at least one other case. For example, a defined exposure could be an event, a workplace, a congregate facility, etc.
- Cluster: Cases who had contact with another case, but the exposure is not well defined. For example, cases from two households who interacted many times prior to illness onset.
- Household: Cases who were exposed to another case in their household.

⁴ Due to the lag between case reporting and case investigation, the proportion of cases categorized as sporadic is high in the most recent week or more; some of these cases will be recategorized after investigation is completed.

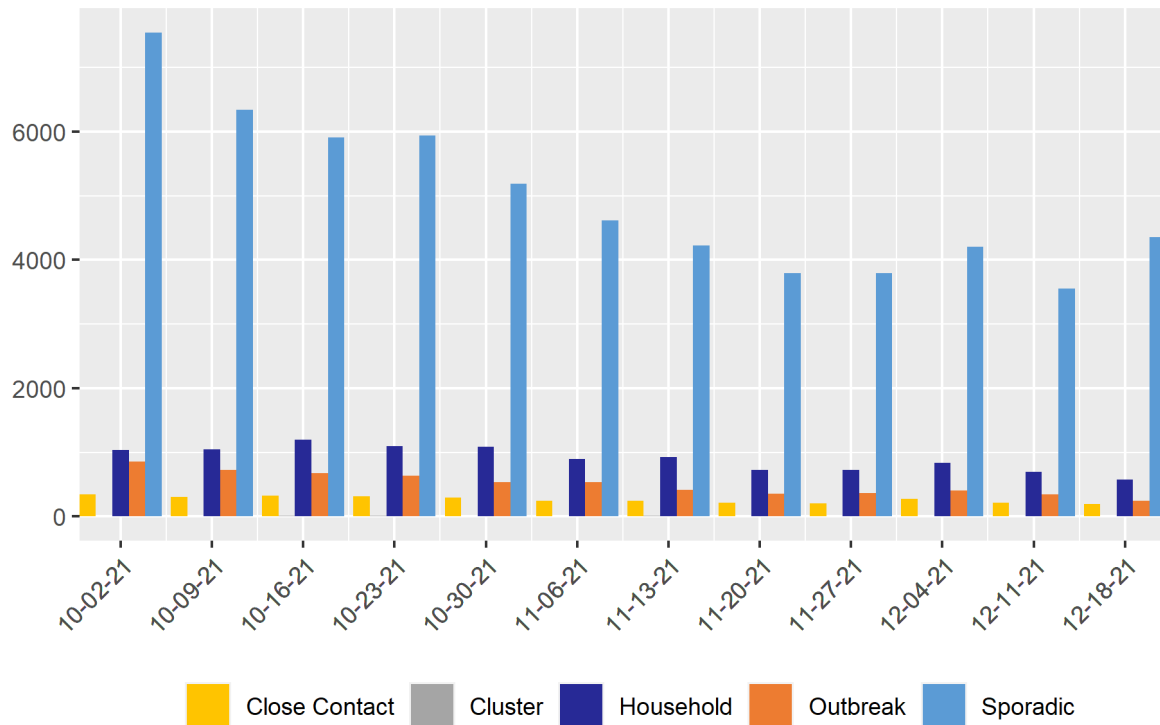
COVID-19 Weekly Report

Oregon's Weekly Surveillance Summary



- Close contact: Cases who were exposed to another case, not in their household. This designation was added on 7/15/2020.

Figure 1. Epidemiologic link of recent COVID-19 cases by week of onset

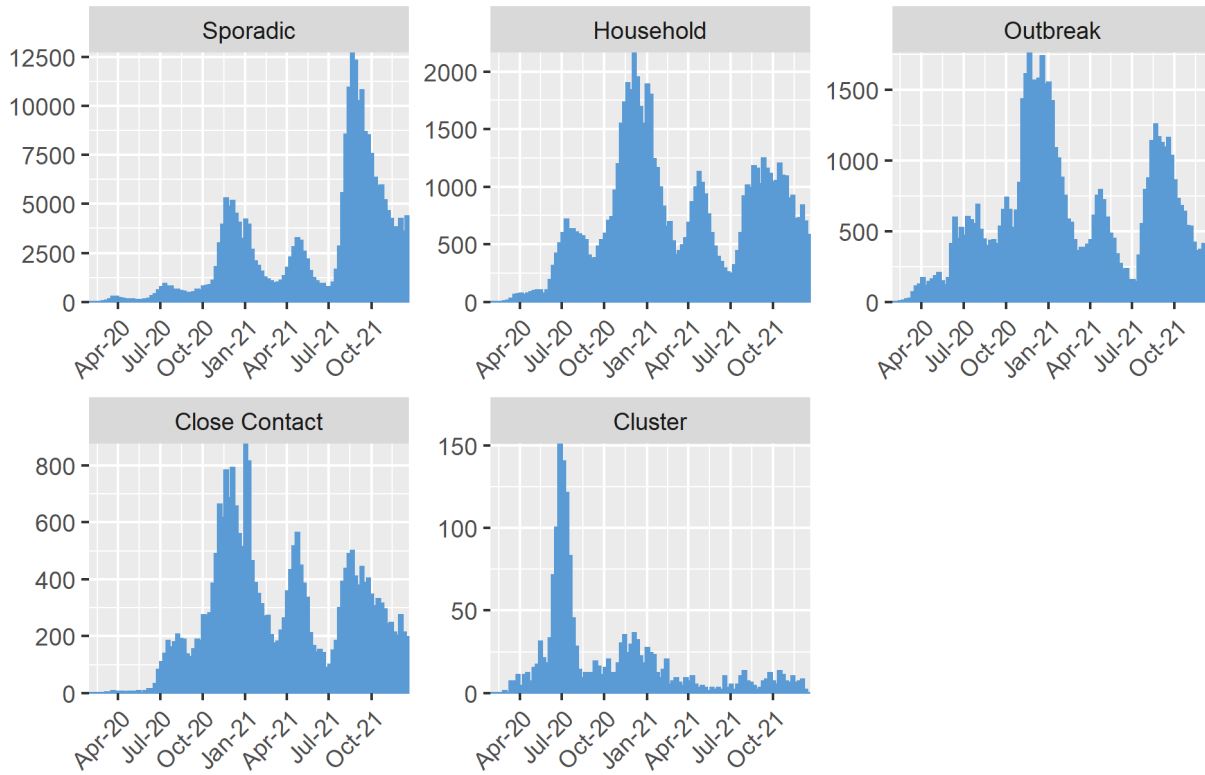


COVID-19 Weekly Report

Oregon's Weekly Surveillance Summary



Figure 2. Epidemiologic link of all COVID-19 cases by week of onset

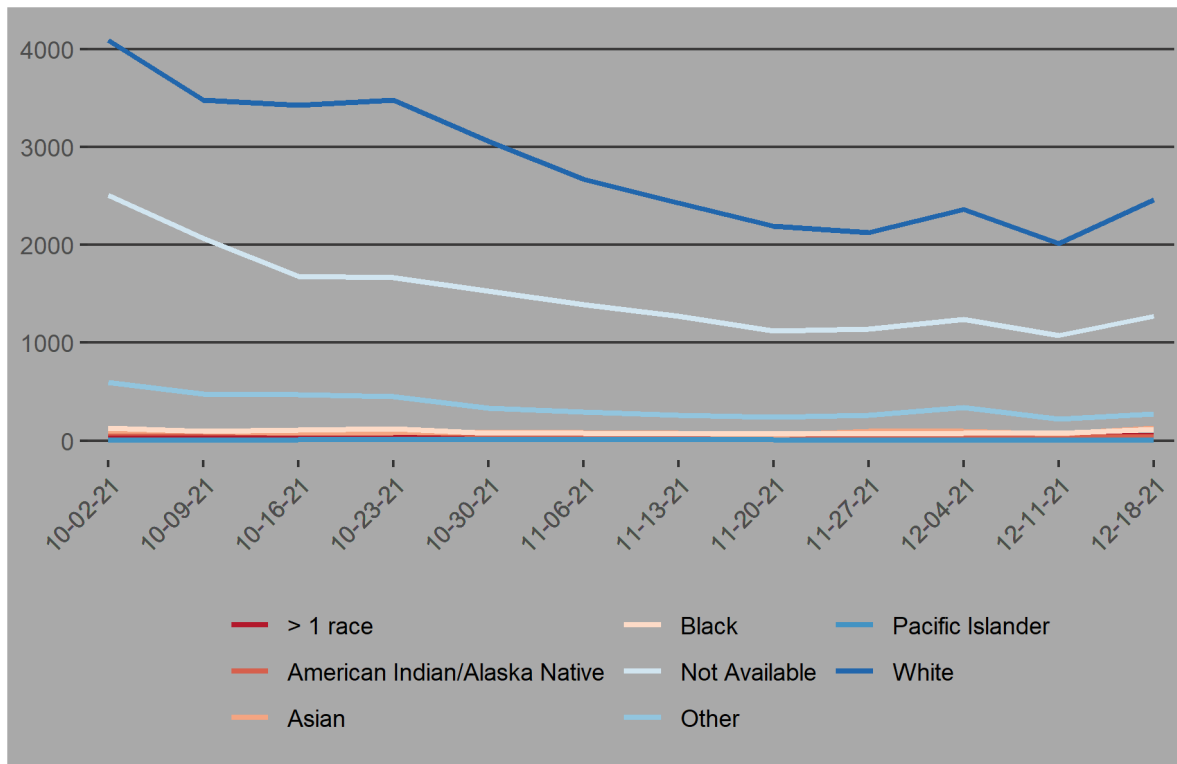


COVID-19 Weekly Report

Oregon's Weekly Surveillance Summary



Figure 3. Recent sporadic COVID-19 cases by race and week of onset

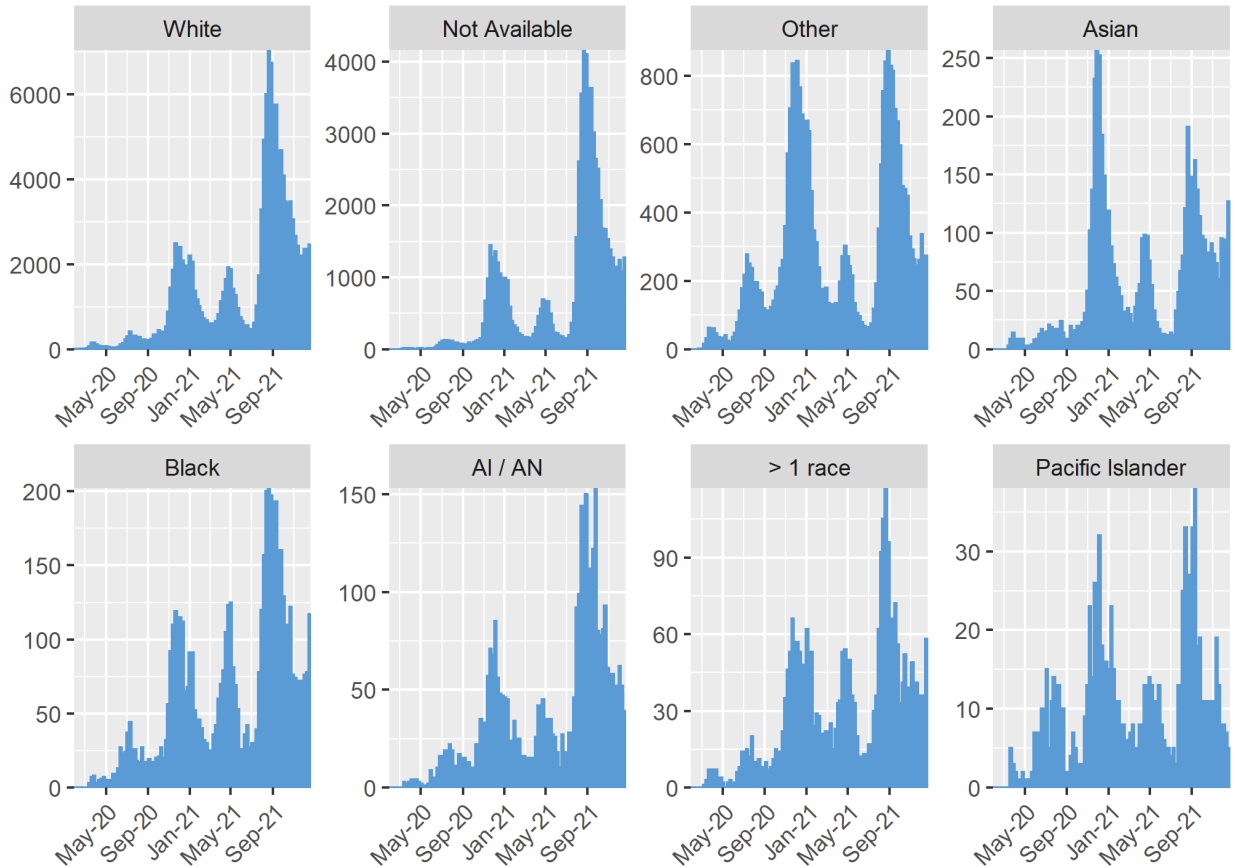


COVID-19 Weekly Report

Oregon's Weekly Surveillance Summary



Figure 4. All sporadic COVID-19 cases by race and week of onset

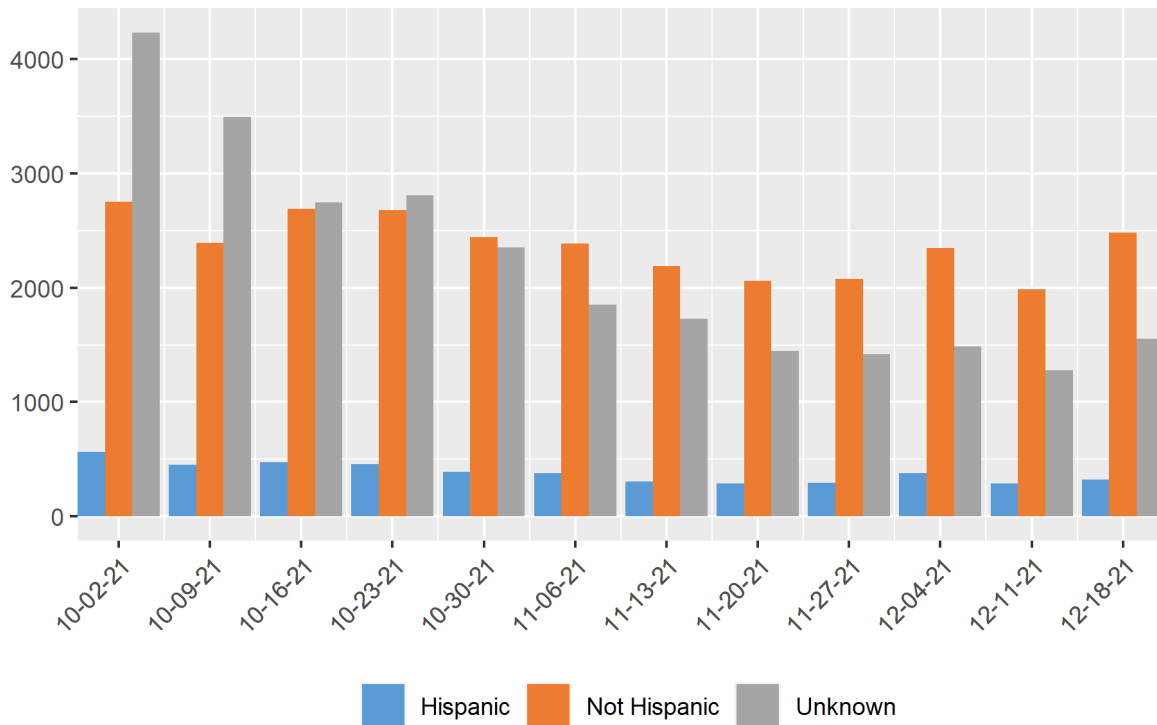


COVID-19 Weekly Report

Oregon's Weekly Surveillance Summary



Figure 5. Recent sporadic COVID-19 cases by ethnicity and week of onset

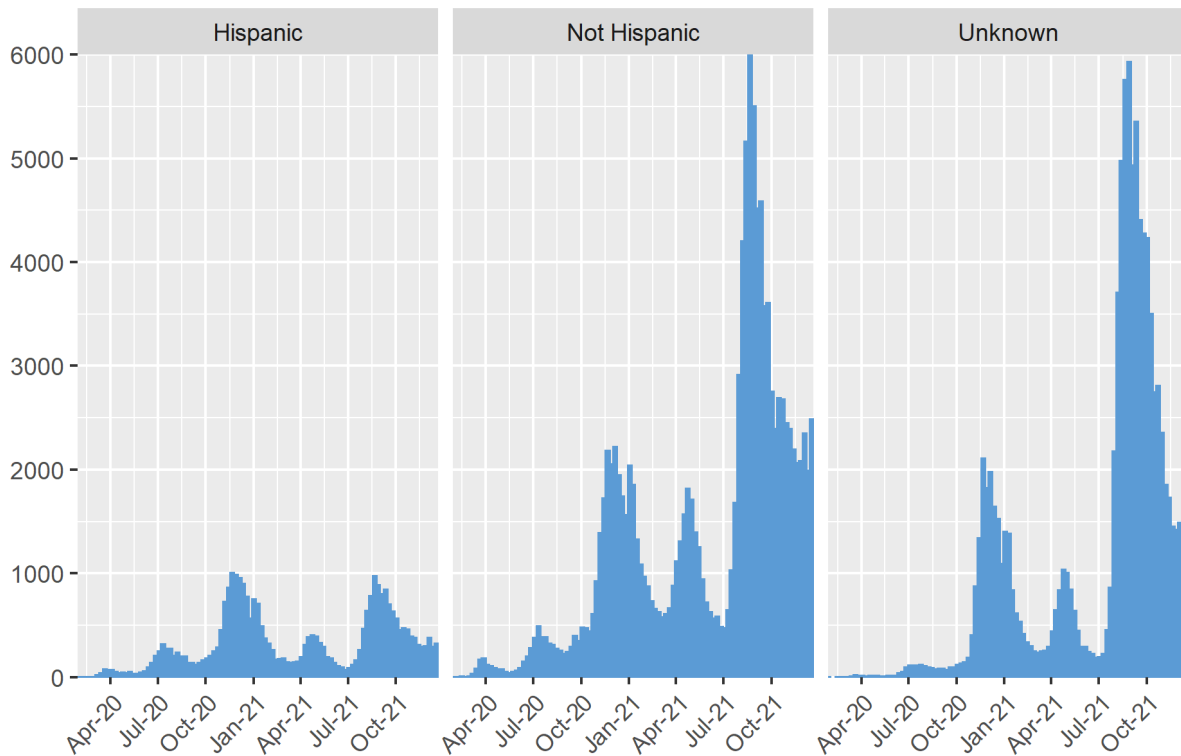


COVID-19 Weekly Report

Oregon's Weekly Surveillance Summary



Figure 6. All sporadic COVID-19 cases by ethnicity and week of onset



Clinical symptoms and reported risk factors

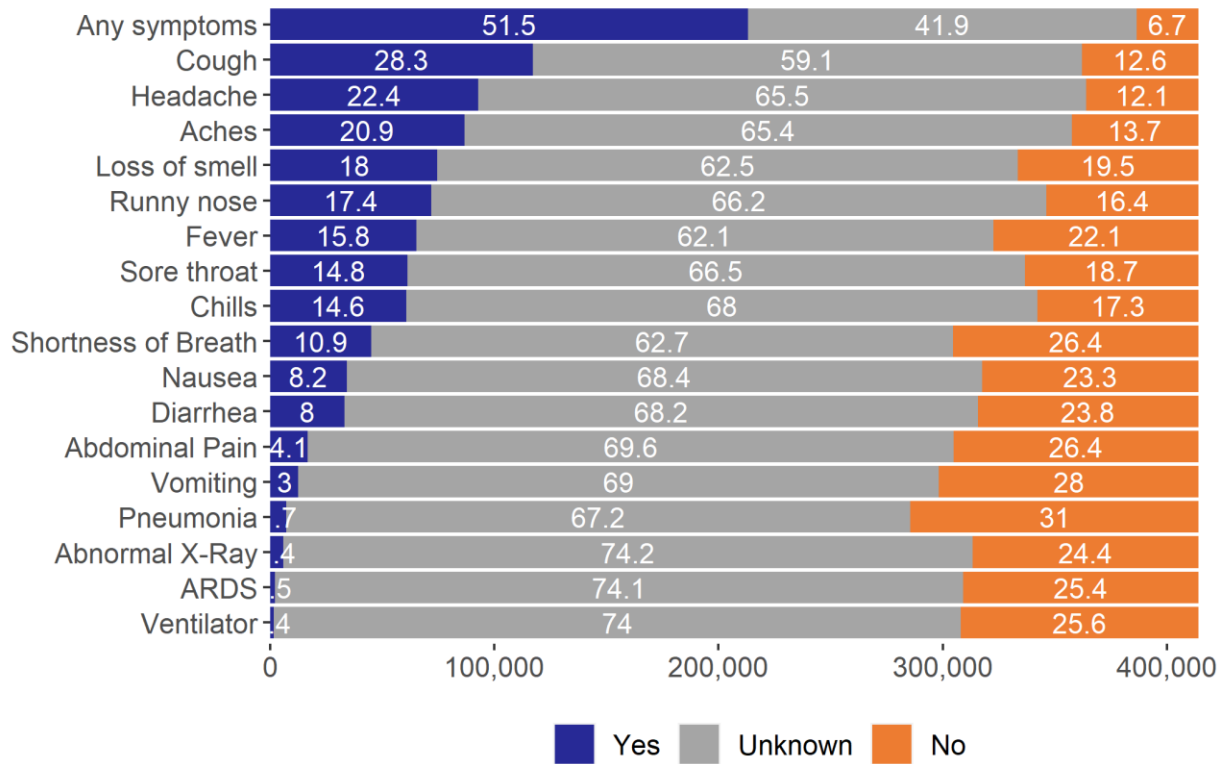
Figure 7 provides information on signs and symptoms from all COVID-19 cases. Of 414,138 cases, 213,155 (51.5%) reported having signs and symptoms of COVID-19. The most commonly reported symptoms are cough (n=117,148, 28.3%) and headache (n=92,887, 22.4%). Figure 8 provides information on the percentage of COVID-19 cases that report symptoms over time. Figure 9 provides information on risk factors from all COVID-19 cases. The most common risk factors are having contact with a known COVID-19 case prior to symptom onset (n=163,399, 39.5%) and having underlying medical conditions (n=260,181, 62.8%). Note that a person may report more than one sign/symptom or risk factor. Where displayed by week in this report, case data are categorized by week of reported symptom onset, not by date of case report. This results in reduced numbers in the most recent week or more due to reporting lags.

COVID-19 Weekly Report

Oregon's Weekly Surveillance Summary



Figure 7. Reported signs and symptoms for all COVID-19 cases

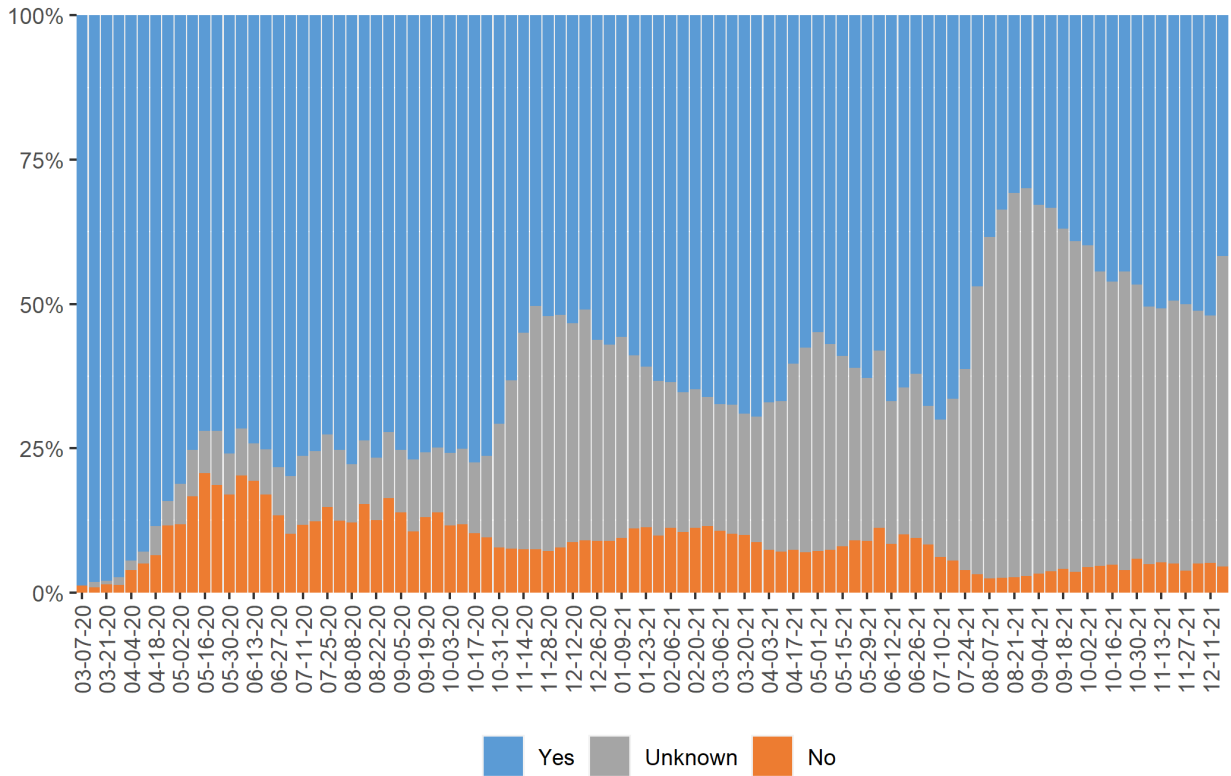


COVID-19 Weekly Report

Oregon's Weekly Surveillance Summary



Figure 8. Reported symptoms among all COVID-19 cases by week of onset

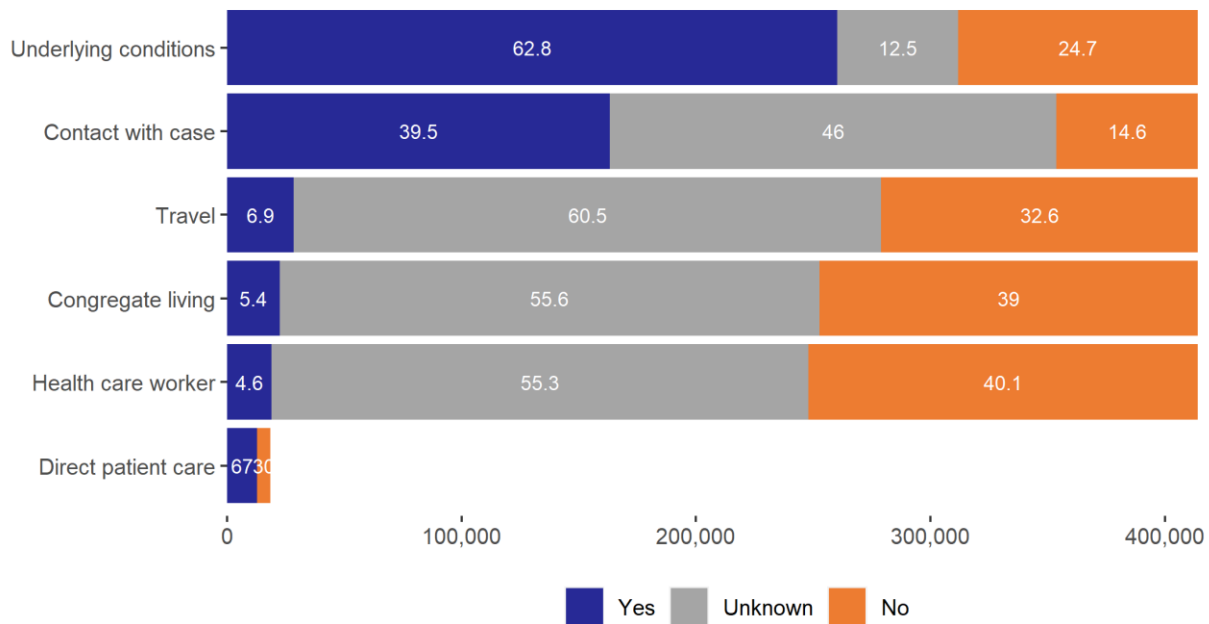


COVID-19 Weekly Report

Oregon's Weekly Surveillance Summary



Figure 9. Reported risk factors among all COVID-19 cases



Risk factor definitions:

- Congregate living situations include, but are not limited to, long-term care facilities, group homes, prisons, and shelters. Data include people with confirmed cases who live or work in congregate living situations.
- Direct patient care is only asked if a case is a healthcare worker or volunteer. The denominator is the number of healthcare workers or volunteers.
- Underlying medical conditions include cardiovascular disease, chronic liver disease, chronic lung disease, chronic renal disease, current or former smoker, diabetes mellitus, immunocompromised condition, neurologic and neurodevelopmental conditions, obesity, or other chronic diseases.

Demographics

The following tables and figures show the demographic characteristics for all COVID-19 cases. The tables show case counts, case rates, and indicators of severity by sex, age,

COVID-19 Weekly Report

Oregon's Weekly Surveillance Summary

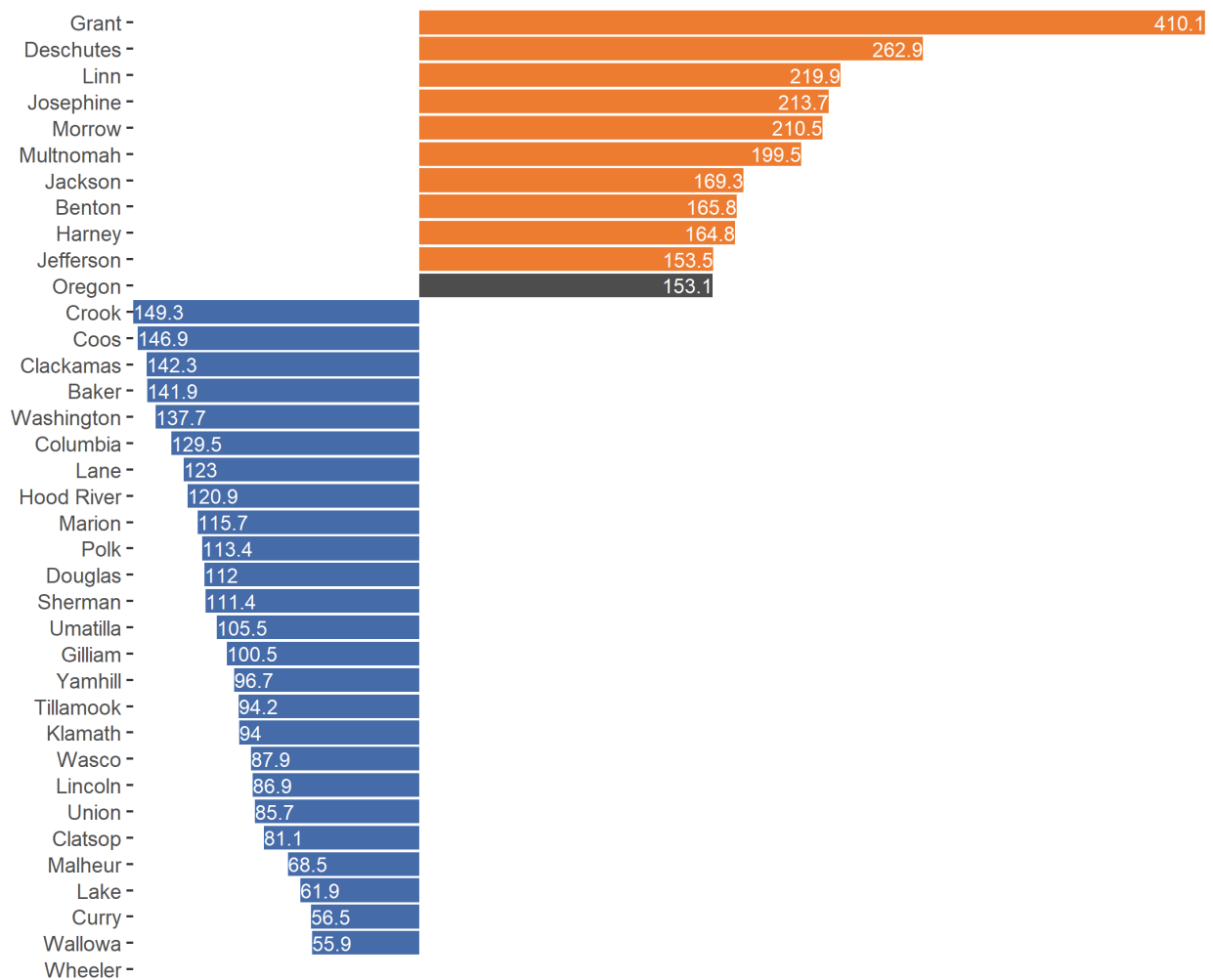


race and ethnicity. The figures show cases over time, by week of onset, for sex, age, race, and ethnicity. Figure 10 displays case rates by county, in comparison to the case rate for all of Oregon.

Geography

The following figure shows case rates by county for the most recently completed MMWR week, which is currently December 19 to December 25, 2021. Cases are displayed using the date that the case became known to public health.

Figure 10. Case rates per 100,000 population, by county



COVID-19 Weekly Report

Oregon's Weekly Surveillance Summary



1. Counties that had case rates above the case rate for the state are displayed in orange. Counties that had case rates below the case rate for the state are displayed in blue.
2. Counties that had zero cases in the time period displayed appear on the list, but do not have a bar to display.

Sex

Table 1. Severity and rates of COVID-19 by sex

Sex	Cases	% of total cases	Cases per 100,000	Hospitalized	% Hospitalized	Deaths	Case fatality
Female	208,563	50.4	9,642.6	10,293	4.9	2,508	1.2
Male	196,995	47.6	9,357.9	11,534	5.9	3,080	1.6
Non-Binary	45	0.0		0	0.0	0	0.0
Not Available	8,535	2.1		159	1.9	35	0.4
Total	414,138	100.0	9,703.2	21,986	5.3	5,623	1.4

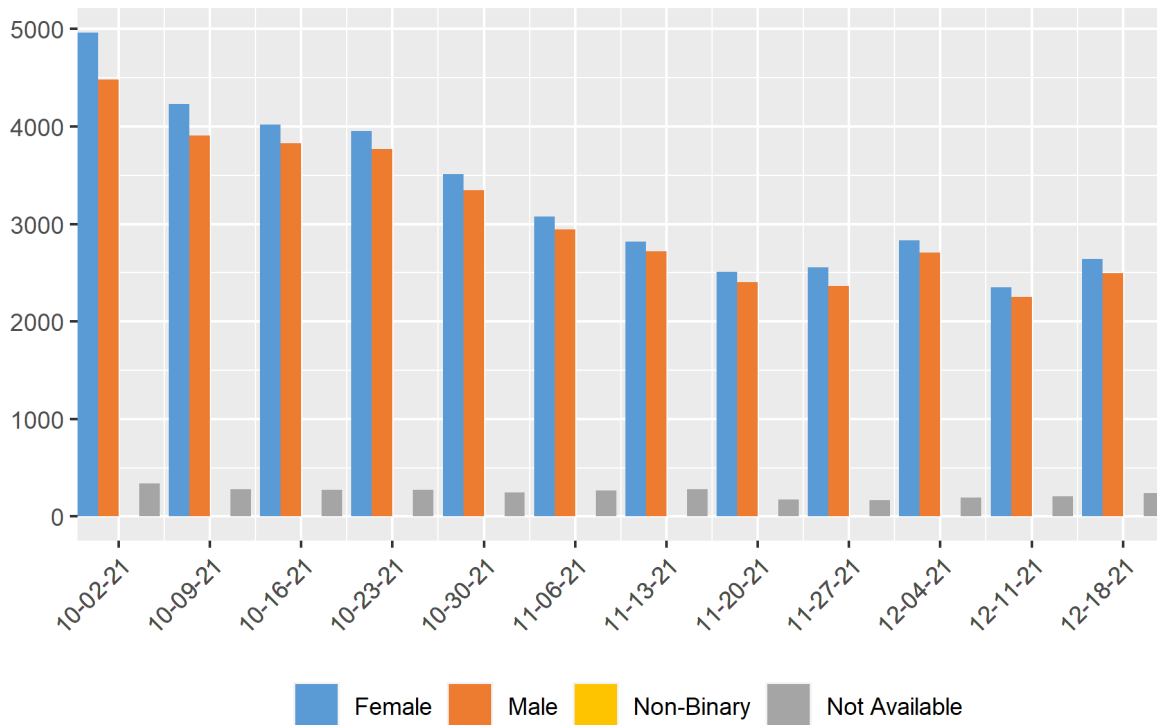
1. Rates are calculated using population estimates from the 2020 Annual Population Report from Portland State University's College of Urban & Public Affairs Population Research Center and 2019 housing and demographic data from the U.S. Census Bureau's American Community Survey (ACS).

COVID-19 Weekly Report

Oregon's Weekly Surveillance Summary



Figure 11. Recent COVID-19 cases by sex and week of onset

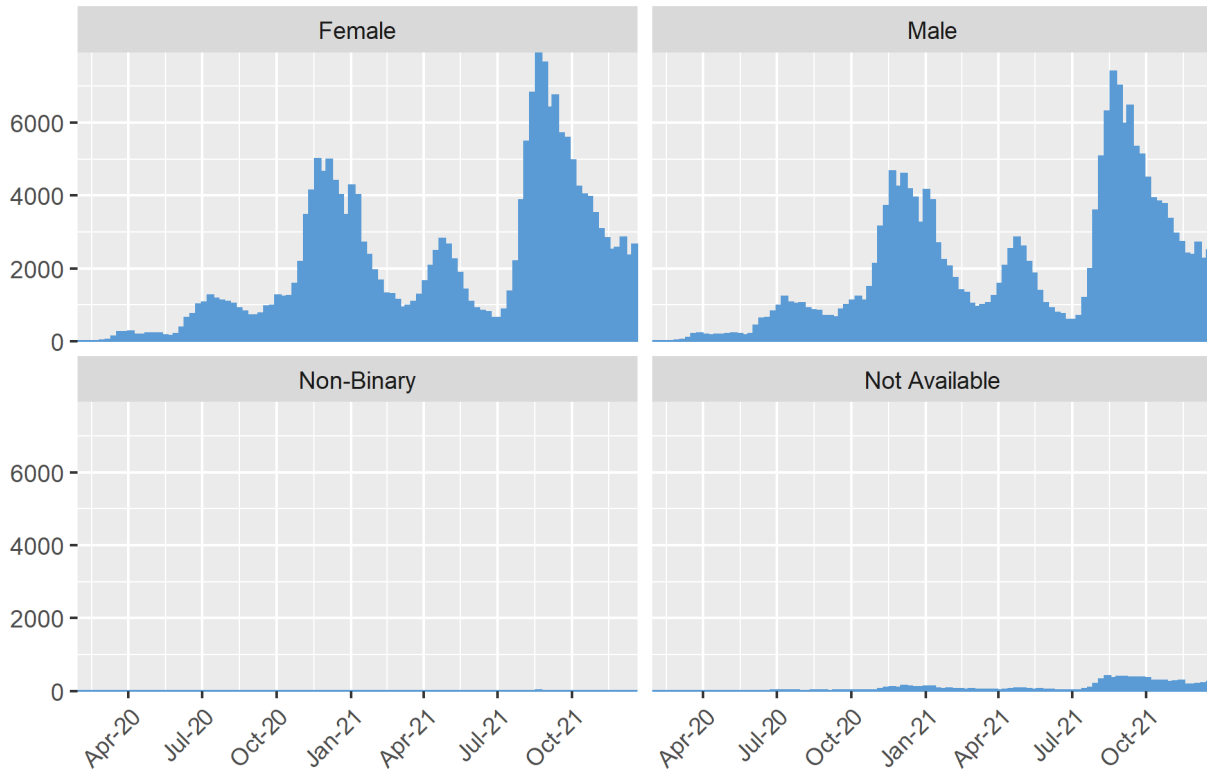


COVID-19 Weekly Report

Oregon's Weekly Surveillance Summary



Figure 12. All COVID-19 cases by sex and week of onset



COVID-19 Weekly Report

Oregon's Weekly Surveillance Summary



Age

Table 2. Severity and rates of COVID-19 by age

Age group	Cases	% of total cases	Cases per 100,000	Hospitalized	% Hospitalized	Deaths	Case fatality
0-9	31,507	7.6	6,719.4	279	0.9	2	0.0
10-19	46,929	11.3	9,299.7	382	0.8	3	0.0
20-29	79,369	19.2	14,412.6	1,266	1.6	28	0.0
30-39	72,921	17.6	12,301.7	1,762	2.4	88	0.1
40-49	61,292	14.8	11,359.7	2,392	3.9	236	0.4
50-59	50,721	12.2	9,501.4	3,468	6.8	522	1.0
60-69	36,645	8.8	6,690.8	4,524	12.3	1,047	2.9
70-79	21,286	5.1	6,049.7	4,294	20.2	1,354	6.4
80+	12,735	3.1	7,149.1	3,612	28.4	2,343	18.4
Not Available	733	0.2		7	1.0	0	0.0
Total	414,138	100.0	9,703.2	21,986	5.3	5,623	1.4

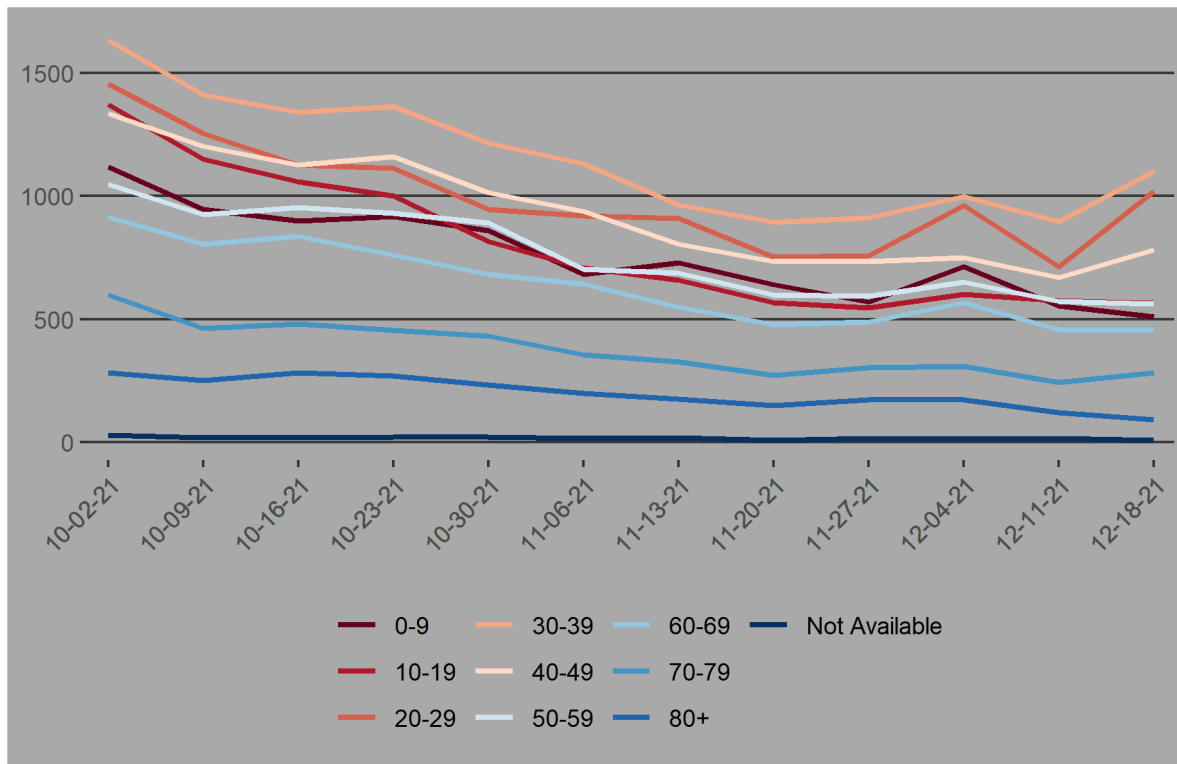
1. Rates are calculated using population estimates from the 2020 Annual Population Report from Portland State University's College of Urban & Public Affairs Population Research Center and 2019 housing and demographic data from the U.S. Census Bureau's American Community Survey (ACS).

COVID-19 Weekly Report

Oregon's Weekly Surveillance Summary



Figure 13. Recent COVID-19 cases by age and week of onset

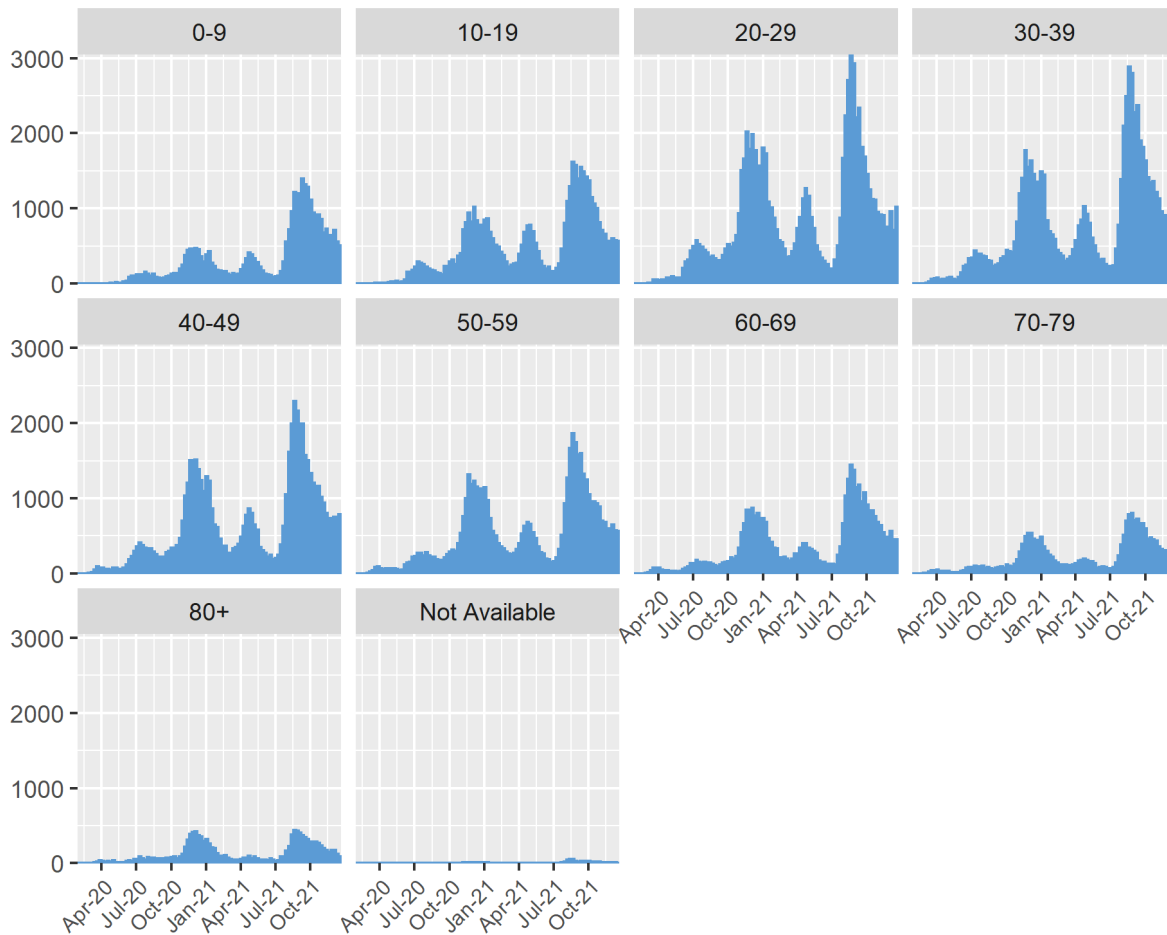


COVID-19 Weekly Report

Oregon's Weekly Surveillance Summary



Figure 14. All COVID-19 cases (counts) by age and week of onset

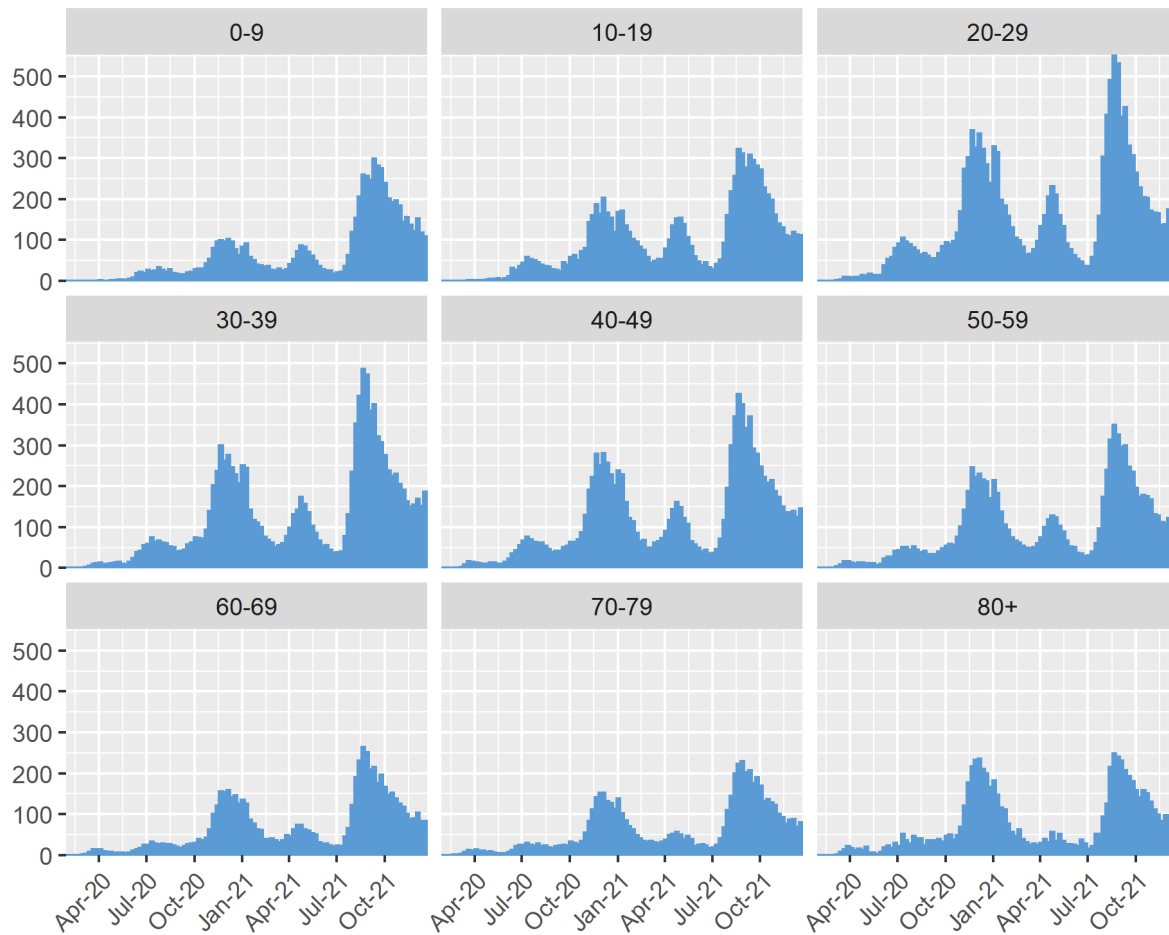


COVID-19 Weekly Report

Oregon's Weekly Surveillance Summary



Figure 15. All COVID-19 cases (case rate per 100,000) by age and week of onset



COVID-19 Weekly Report

Oregon's Weekly Surveillance Summary



Race

Table 3. Severity and rates of COVID-19 by race

Race	Cases	% of total cases	Cases per 100,000	Hospitalized	% Hospitalized	Deaths	Case fatality
> 1 race	5,818	1.4	2,838.2	313	5.4	73	1.3
American Indian/Alaska Native	6,807	1.6	13,704.8	461	6.8	98	1.4
Asian	9,147	2.2	4,901.3	509	5.6	104	1.1
Black	9,248	2.2	11,373.3	702	7.6	99	1.1
Not Available	99,092	23.9		2,718	2.7	1,058	1.1
Other	57,431	13.9		2,730	4.8	397	0.7
Pacific Islander	2,294	0.6	13,351.5	207	9.0	28	1.2
White	224,301	54.2	6,235.0	14,346	6.4	3,766	1.7
Total	414,138	100.0	9,703.2	21,986	5.3	5,623	1.4

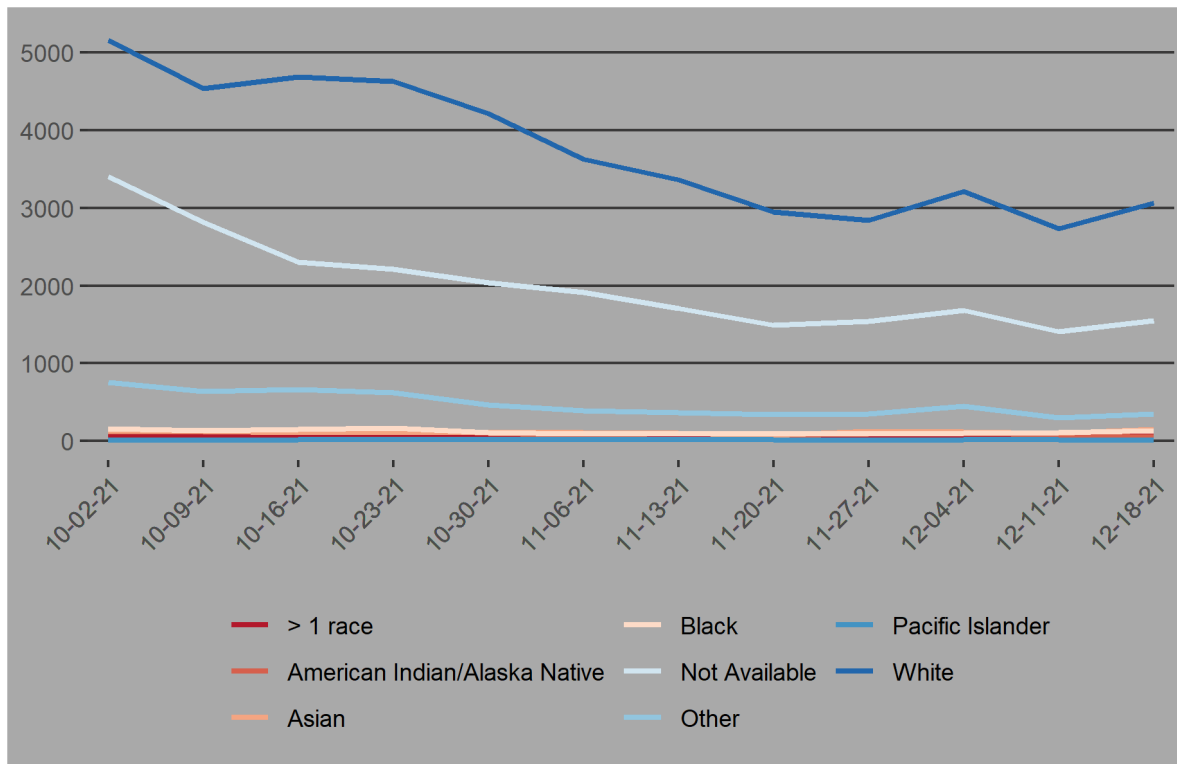
1. During the case investigation, people are asked to self-report their race, ethnicity, tribal affiliation, country of origin, or ancestry.
2. Rates are calculated using population estimates from the 2020 Annual Population Report from Portland State University's College of Urban & Public Affairs Population Research Center and 2019 housing and demographic data from the U.S. Census Bureau's American Community Survey (ACS).
3. Persons for which race information was not available were not included in these estimates. The number of persons with race data unavailable can be found in Table 3.
4. 44,862 (78.1%) of the 57,431 persons who identify as "Other" race also self-identify as Hispanic or Latino.

COVID-19 Weekly Report

Oregon's Weekly Surveillance Summary



Figure 16. Recent COVID-19 cases by race and week of onset

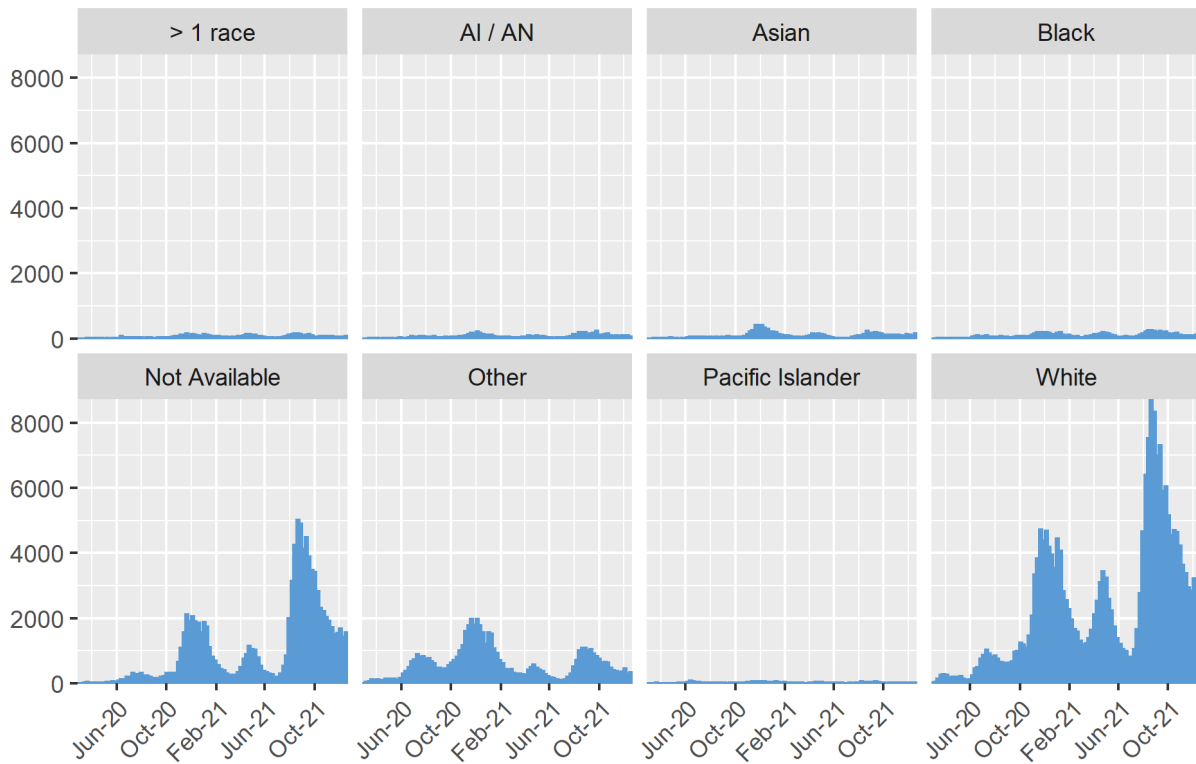


COVID-19 Weekly Report

Oregon's Weekly Surveillance Summary



Figure 17. All COVID-19 cases (counts) by race and week of onset

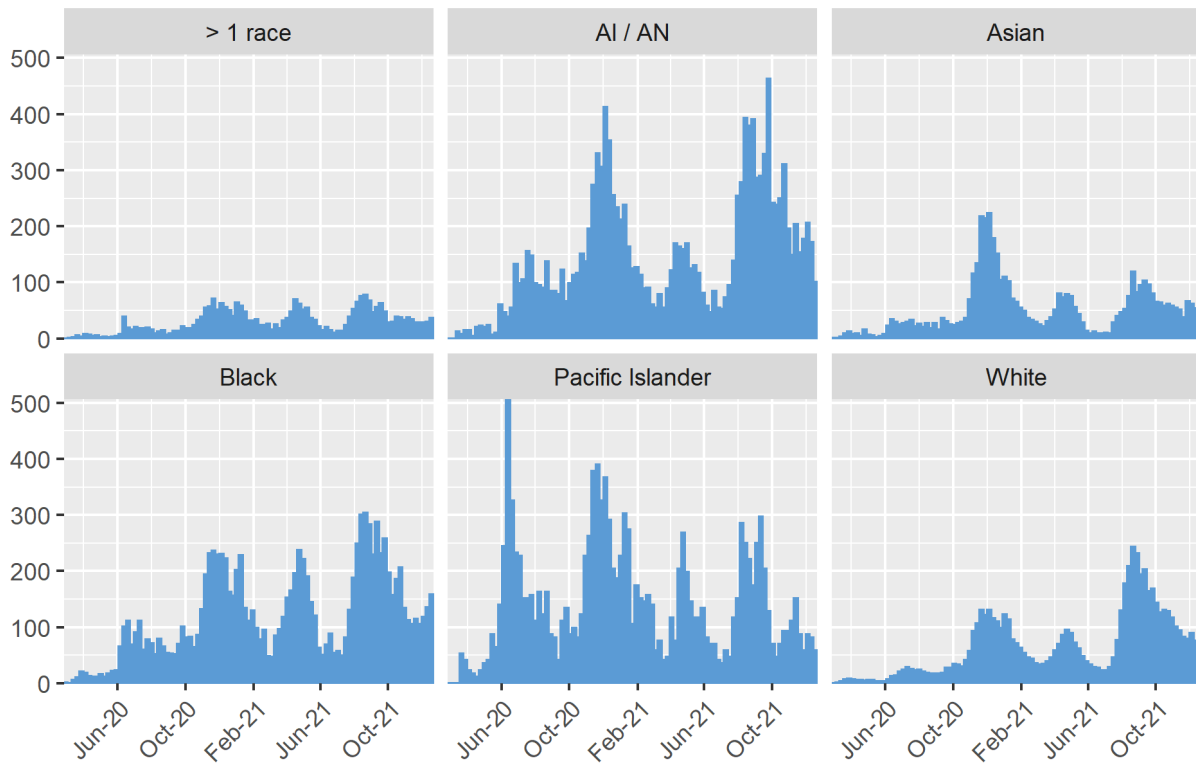


COVID-19 Weekly Report

Oregon's Weekly Surveillance Summary



Figure 18. All COVID-19 cases (case rates per 100,000) by race and week of onset



COVID-19 Weekly Report

Oregon's Weekly Surveillance Summary



Ethnicity

Table 4. Severity and rates of COVID-19 by ethnicity

Ethnicity	Cases	% of total cases	Cases per 100,000	Hospitalized	% Hospitalized	Deaths	Case fatality rate
Hispanic	65,602	15.8	11,823.4	2,830	4.3	360	0.5
Not Hispanic	211,380	51.0	5,692.7	13,639	6.5	3,378	1.6
Unknown	137,156	33.1		5,517	4.0	1,885	1.4
Total	414,138	100.0	9,703.2	21,986	5.3	5,623	1.4

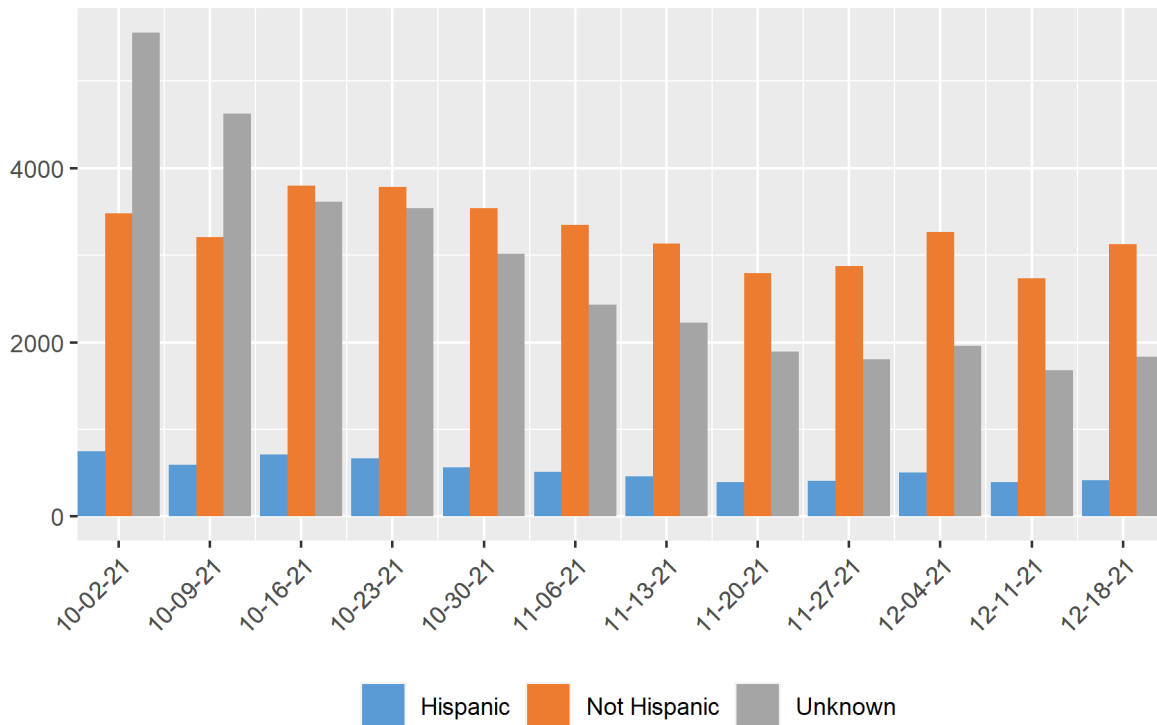
1. Rates are calculated using population estimates from the 2020 Annual Population Report from Portland State University's College of Urban & Public Affairs Population Research Center and 2019 housing and demographic data from the U.S. Census Bureau's American Community Survey (ACS).

COVID-19 Weekly Report

Oregon's Weekly Surveillance Summary



Figure 19. Recent COVID-19 cases by ethnicity and week of onset

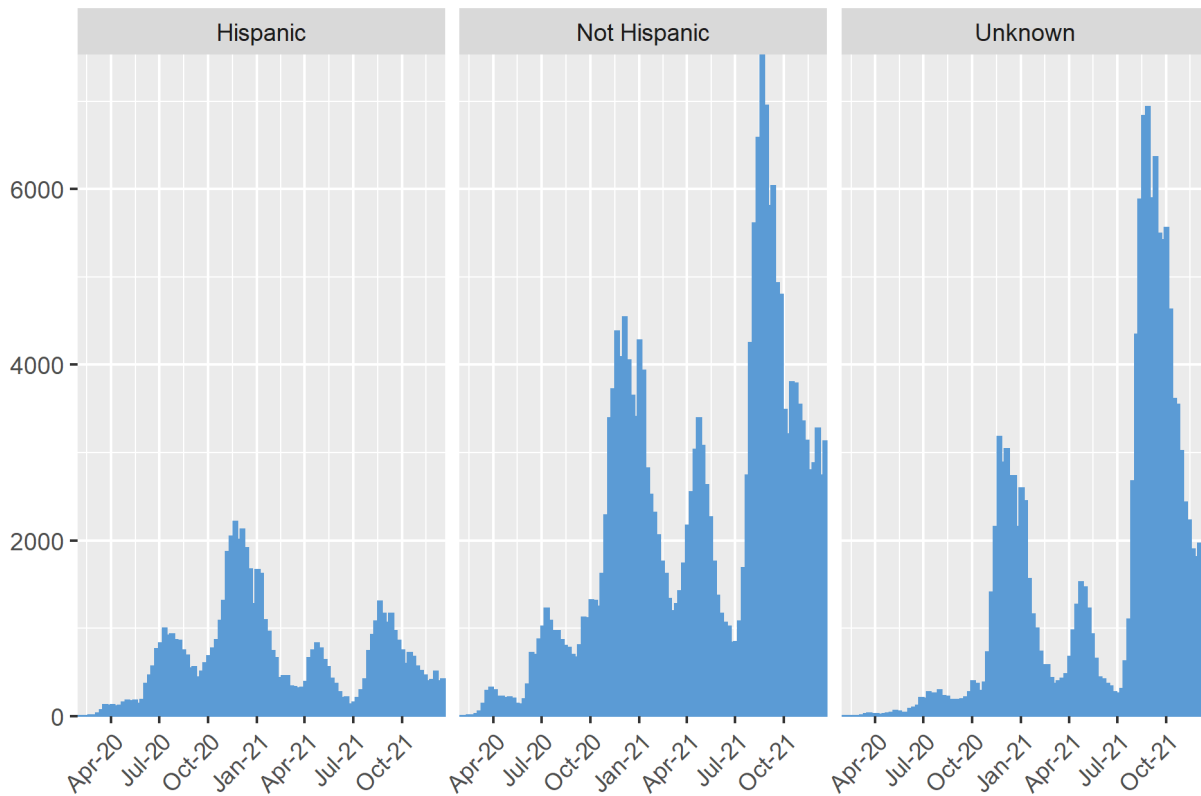


COVID-19 Weekly Report

Oregon's Weekly Surveillance Summary



Figure 20. All COVID-19 cases (counts) by ethnicity and week of onset

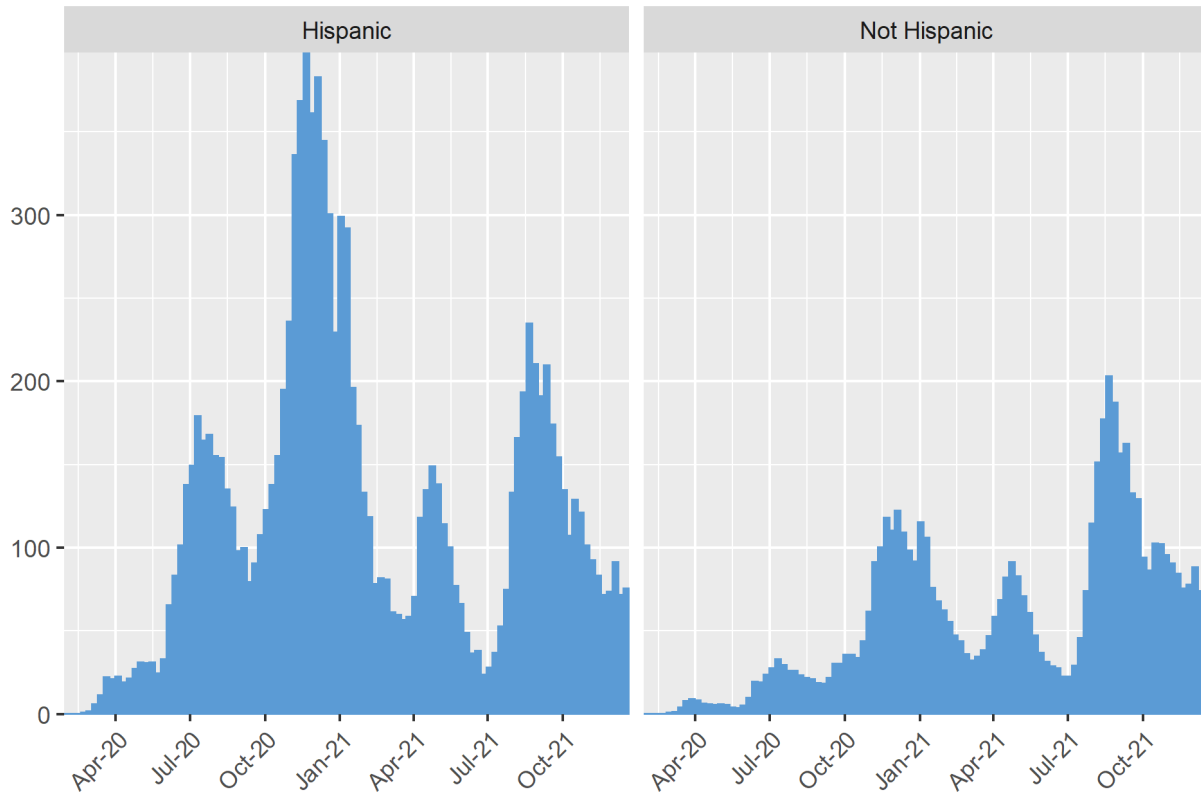


COVID-19 Weekly Report

Oregon's Weekly Surveillance Summary



Figure 21. All COVID-19 cases (case rates per 100,000) by ethnicity and week of onset



COVID-19 Weekly Report

Oregon's Weekly Surveillance Summary



Age-adjustment

Tables 5 and 6 show the ratio of age-adjusted rates of COVID-19 for cases, hospitalizations, and deaths by race and ethnicity. Each table compares the rates of cases, hospitalizations, and deaths between each group and a reference group and accounts for differences in population distributions in each group.

Table 5. Ratio of age-adjusted rates for cases, hospitalizations, and deaths by race

Age-adjusted rate ratios of cases, hospitalizations, and deaths, compared to white persons.

Race	Cases	Hospitalizations	Deaths
> 1 race	0.5	0.8	1.0
American Indian/Alaska Native	2.2	2.9	3.0
Asian	0.8	0.9	0.9
Black	1.7	3.0	2.2
Pacific Islander	2.1	5.3	4.8
White	1.0	1.0	1.0

1. During the case investigation, people are asked to self-report their race, ethnicity, tribal affiliation, country of origin, or ancestry.
2. U.S. Census Bureau; American Community Survey, 2019 American Community Survey 5-Year Estimates.
3. Persons for which race information was not available were not included in these estimates. The number of persons with race data unavailable can be found in Table 3.

COVID-19 Weekly Report

Oregon's Weekly Surveillance Summary



Table 6. Ratio of age-adjusted rates for cases, hospitalizations, and deaths by ethnicity

Age-adjusted rate ratios of cases, hospitalizations, and deaths, compared to non-Hispanic.

Ethnicity	Cases	Hospitalizations	Deaths
Hispanic	1.9	2.4	2.1
Non-Hispanic	1.0	1.0	1.0

1. During the case investigation, people are asked to self-report their race, ethnicity, tribal affiliation, country of origin, or ancestry.
2. U.S. Census Bureau; American Community Survey, 2019 American Community Survey 5-Year Estimates.
3. Persons for which ethnicity information was not available were not included in these estimates. The number of persons with ethnicity data unavailable can be found in Table 4.

Follow-up

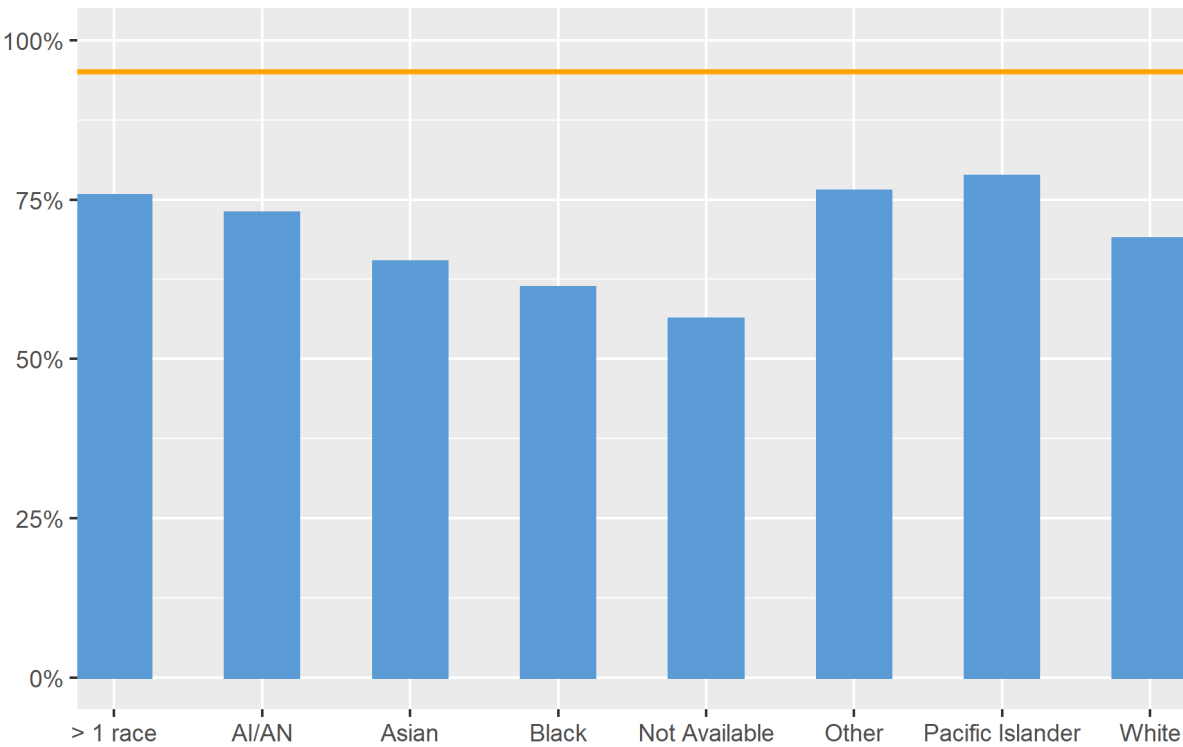
Figure 22 shows the percentage of cases that were called within 24 hours of being reported to public health by race. Figure 23 shows the percentage of cases that were called within 24 hours of being reported to public health by ethnicity. Figure 24 shows the percentage of cases that were interviewed, by race. Figure 25 shows the percentage of cases that were interviewed, by ethnicity. Race and ethnicity data are collected when cases are interviewed. Race and ethnicity data for cases that were not interviewed are abstracted from laboratory reports and medical records if it is available. The orange line in figures 22 and 23 represents the state metric for timely follow up for all cases: 95%.

COVID-19 Weekly Report

Oregon's Weekly Surveillance Summary



Figure 22. Follow up attempted within 24 hours, % by race

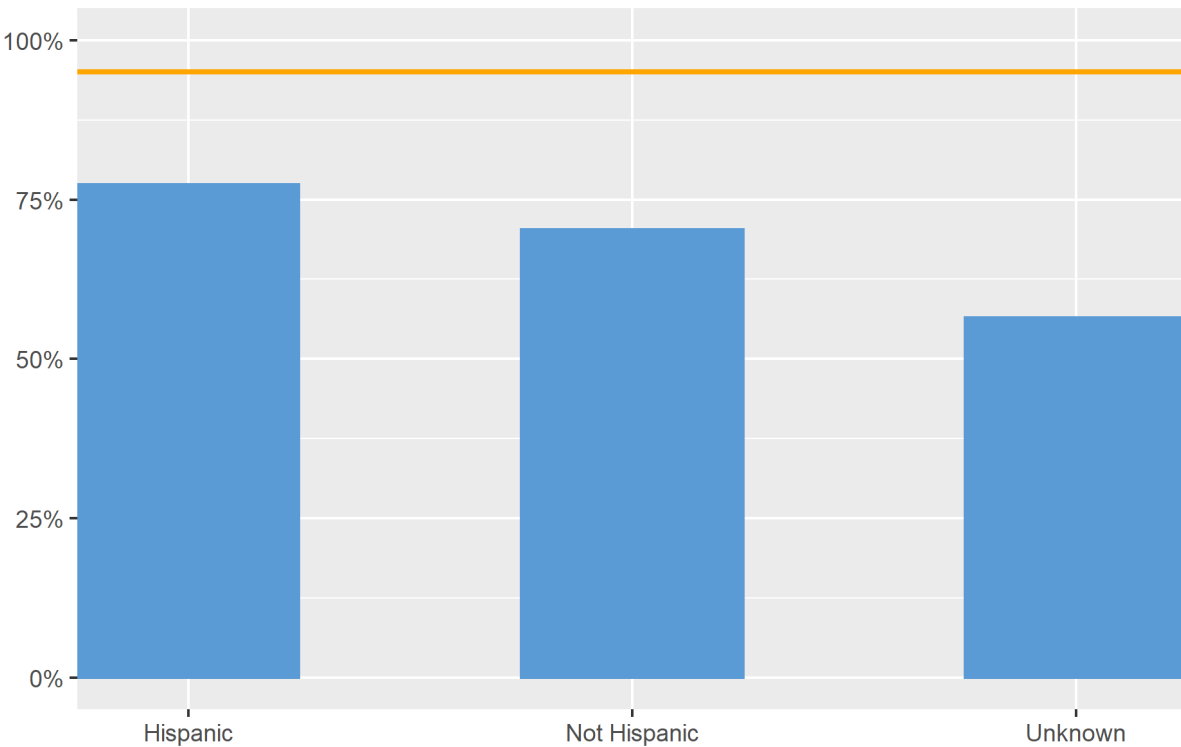


COVID-19 Weekly Report

Oregon's Weekly Surveillance Summary



Figure 23. Follow up attempted within 24 hours, % by ethnicity

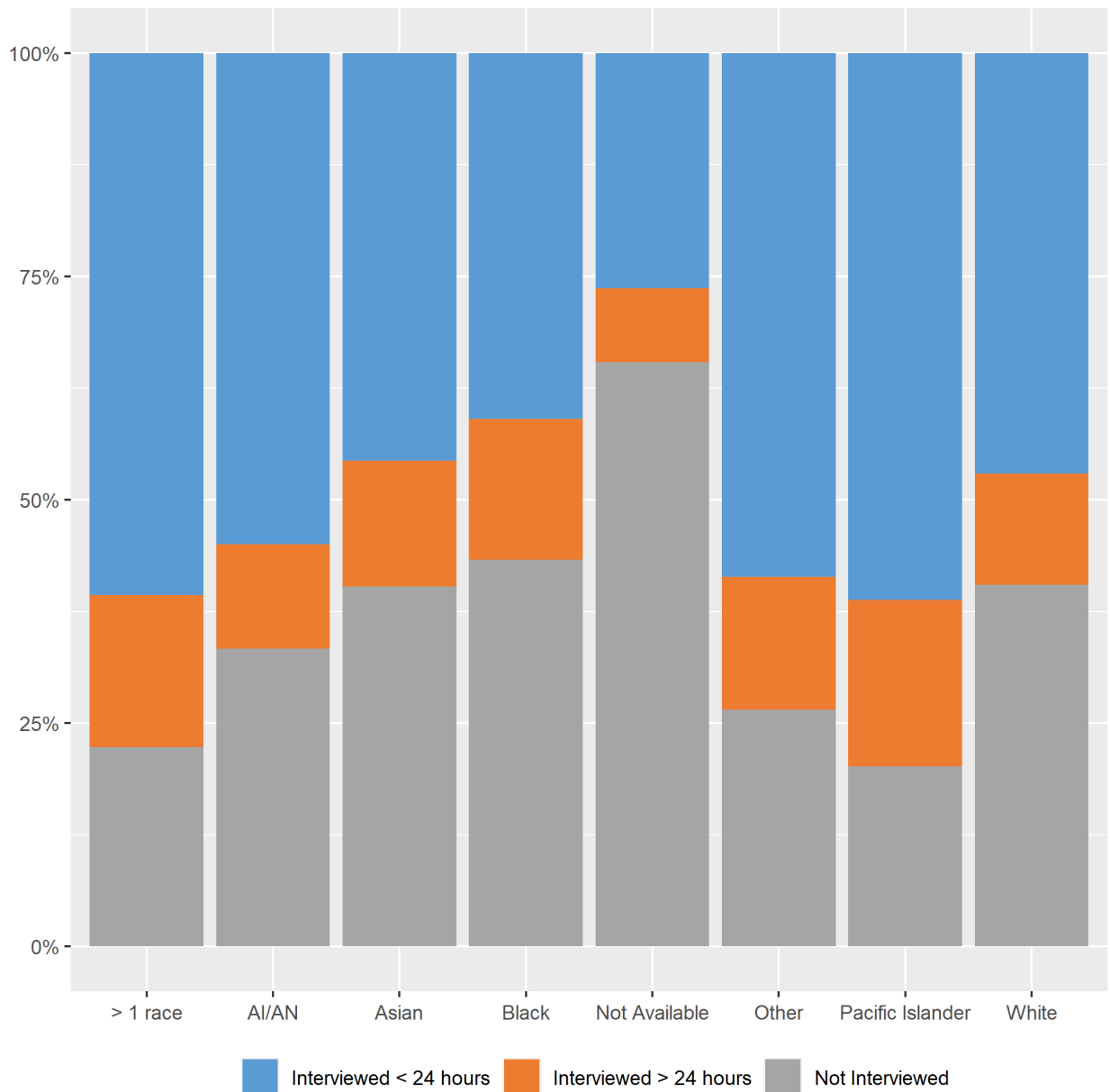


COVID-19 Weekly Report

Oregon's Weekly Surveillance Summary



Figure 24. Cases interviewed, by race

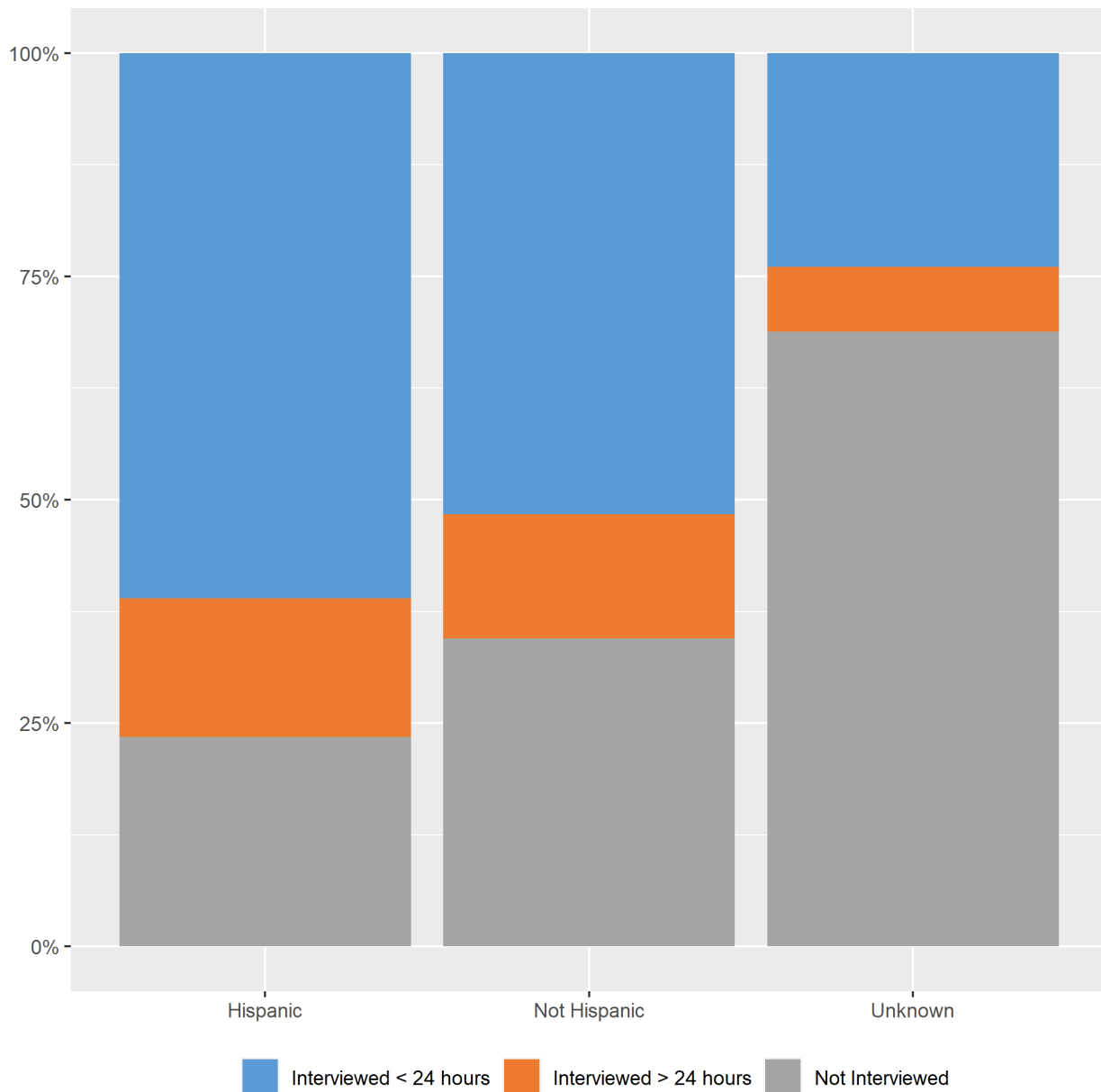


COVID-19 Weekly Report

Oregon's Weekly Surveillance Summary



Figure 25. Cases interviewed, by ethnicity



COVID-19 Weekly Report

Oregon's Weekly Surveillance Summary



People with Intellectual and Developmental Disabilities

As of September 26, 2021 OHA is aware of 1,407 people with intellectual or developmental disabilities who have had COVID-19 to date. This includes individuals who live in congregate settings and in family or individual homes. To date, there are 41 deaths among people with intellectual or developmental disabilities. This number is from conducting a match between the ODHS Office of Developmental Disabilities Services client list and the Oregon COVID-19 case database. OHA will update this number on a quarterly basis.

Additional information about the ODDS program and COVID-19 can be found here: <https://www.oregon.gov/dhs/SENIORS-DISABILITIES/DD/ODDS%20Resource%20Library/ODDS-Residential-COVID-19-Report.pdf>.

ODDS data is based on self-reports from providers and case management entities and therefore may differ from testing data received from the Oregon Health Authority.

Weekly COVID-19 Hospitalizations (HOSCAP)

OHA is publishing data on the number of COVID-19 hospitalizations by hospital in the prior week; data are from HOSCAP. Maps and tables containing the 7-day average of hospitalizations by region and hospital are available online at: <https://public.tableau.com/app/profile/oregon.health.authority.covid.19/viz/OregonCOVID-19HospitalCapacity/HospitalizationbyFacility>.

Information on Oregon's current hospital bed capacity by region is available online at: <https://public.tableau.com/app/profile/oregon.health.authority.covid.19/viz/OregonCOVID-19HospitalCapacity/BedAvailabilitybyRegion>.

ZIP code

OHA is publishing data on cases at the ZIP code level, available online at:

COVID-19 Weekly Report

Oregon's Weekly Surveillance Summary



<https://public.tableau.com/profile/oregon.health.authority.covid.19#!/vizhome/OregonCOVID-19CasesbyZIPCode/OregonsCOVID-19CasesbyZipCode?publish=yes>.

Summary table of all zip codes available here:

<https://public.tableau.com/profile/oregon.health.authority.covid.19#!/vizhome/OregonCOVID-19CasesbyZIPCode-SummaryTable/CasesbyZIPCodeSummaryTable?publish=yes>.

Document accessibility: For individuals with disabilities or individuals who speak a language other than English, OHA can provide information in alternate formats such as translations, large print, or braille. Contact the Health Information Center at 1-971-673-2411, 711 TTY or COVID19.LanguageAccess@dhsoha.state.or.us.