

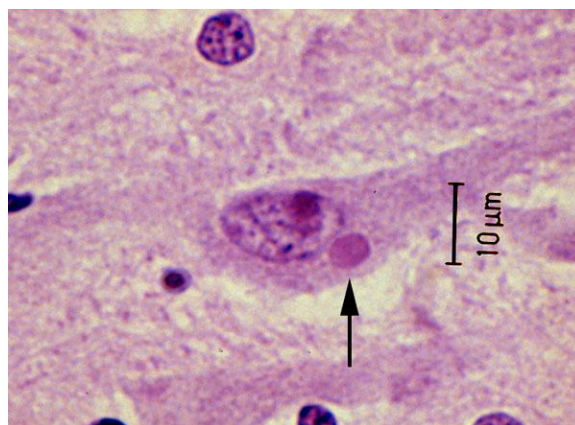
# Oregon Health Authority

Public Health Division  
Center for Public Health Practice

## July 2012

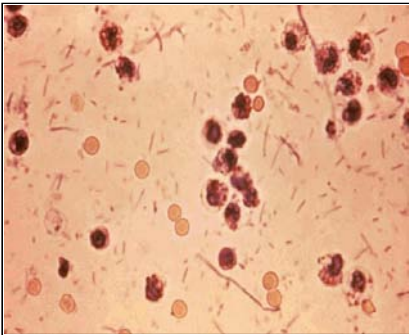
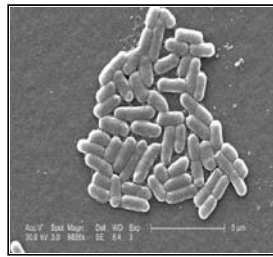
### MEMENTO MORBI

*A Monthly Communicable Disease Surveillance Report*



# Table of Contents

About Memento Morbi	3
Notifiable Diseases by Month	4
Notifiable Diseases by County	6
Notifiable Diseases of Low Incidence	9
Notifiable Diseases by Age, Sex, Race and County	10



## **About *Memento Morbi***

This monthly report contains an early source of infectious disease surveillance data for Oregon. These data are important for monitoring early trends of notifiable infectious diseases and for targeting prevention and control efforts. The purpose of this document is to summarize important information data users should know about the report to facilitate proper analysis and interpretation.

1. This report comprises compilations of data received by offices of the Oregon State Public Health Division (OSPHD).
2. The diseases reportable by law may increase or decrease over time.
3. The reporting status of diseases included may be determined by state law or be acquired through voluntary submissions.
4. Data are provisional and subject to change upon the completion of ongoing disease investigations.
5. *Memento Morbi* is prepared in the two weeks following the end of the calendar month; delayed case reports would be included in later issues. The same would apply to subsequent differences resulting from duplicates or erroneous data entries in individual reports.
6. Temporal distributions are generally based upon the date of onset or if unavailable, the next available date for epidemiologic purposes, including date of specimen collection, date reported to the local health department, or date reported to OSPHD. Exceptions include tuberculosis cases by date of report to CDC and HIV/AIDS and STD cases by date of computer entry in OSPHD.
7. Data pertaining to race and ethnicity may be incomplete and may have been collected differently for the various notifiable diseases and across time.

## **In Summary**

These data are subject to change, reflecting recent entry of information received from reporting sources. Case counts reported by the HIV Program may differ for past years and vary with the date of abstraction from the case registry due to subsequent receipt of additional information regarding particular cases reported in Oregon, additional case reports for this time period, or changes in federal assignment of particular cases to specific states for reporting purposes.

Reported Cases of Selected Notifiable Diseases or Conditions in Oregon by Month  
2012

	Jan	Feb	Mar	Apr	May	Jun	Jul	YTD
Botulism	0	0	0	0	0	0	4	4
Campylobacter	78	56	46	74	61	90	120	525
Chlamydia	1176	1201	1263	1227	1085	1052	1017	8021
Ciguatera	0	0	0	1	0	0	0	1
Cryptosporidiosis	18	13	22	22	13	20	21	129
Dengue Fever	1	2	0	0	0	0	0	3
E. coli(STEC)	5	8	7	20	12	18	17	87
Ehrlichiosis	1	0	0	0	0	0	0	1
Giardiasis	25	36	42	30	29	16	34	212
Gonorrhea	111	126	119	107	128	118	97	806
HIV_AIDS	25	24	19	27	17	21	35	168
HUS	0	0	0	5	1	0	1	7
Haemophilus influenza	7	7	4	13	5	4	4	44
Hantavirus pulmonary	0	0	0	0	1	0	1	2
Hepatitis A (acute)	0	1	0	0	0	0	0	1
Hepatitis B (acute)	4	3	2	4	0	0	3	16
Hepatitis B (chronic)	36	29	39	32	35	37	27	235
Hepatitis C (acute)	6	3	2	2	7	1	4	25
Hepatitis C (chronic)	395	441	407	437	425	349	382	2836
Latent Tuberculosis	0	1	0	1	1	4	1	8
Legionellosis	4	2	4	2	4	2	2	20
Listeriosis	2	1	1	2	3	1	3	13
Lyme disease	4	4	5	9	1	3	13	39
Malaria	4	0	0	0	0	1	3	8
Measles	0	0	0	1	0	0	0	1
Meningococcal Disease	7	2	2	3	1	3	1	19
Pertussis	22	30	46	65	163	155	95	576
Plague	0	0	0	0	0	1	1	2
Q fever	0	0	0	0	1	0	2	3
Relapsing Fever	0	0	0	1	0	0	1	2
Rocky Mtn Spotted fev	0	0	0	0	0	0	1	1
Salmonella	23	19	19	37	32	38	41	209
Shigella	5	7	5	7	3	6	11	44
Syphilis	16	19	32	28	36	21	13	165
Taeniasis	0	1	0	0	0	1	0	2
Tuberculosis	4	3	5	3	4	7	3	29
Vibrio parahaemolytic	0	0	1	0	0	1	3	5
Yersinia	3	0	3	3	2	6	0	17
YTD	1982	2039	2095	2163	2070	1976	1961	14286

Reported Cases of Selected Notifiable Diseases or Conditions in Oregon by Month  
2011

	Jan	Feb	Mar	Apr	May	Jun	Jul	YTD
Botulism	0	1	0	0	0	0	1	2
Campylobacter	69	51	54	61	81	114	107	537
Chlamydia	1110	889	1426	1093	1123	1302	997	7940
Colorado Tick Fever	0	0	0	0	0	0	1	1
Cryptosporidiosis	11	14	16	18	20	24	14	117
Dengue Fever	0	0	0	0	0	1	1	2
E. coli(STEC)	9	1	4	7	5	8	19	53
Ehrlichiosis	0	0	0	0	0	1	1	2
Giardiasis	32	41	32	27	34	29	24	219
Gonorrhea	108	90	106	134	97	112	125	772
HIV_AIDS	23	19	37	32	21	21	24	177
HUS	1	0	0	1	0	0	0	2
Haemophilus influenza	10	3	16	9	4	4	8	54
Hantavirus pulmonary	0	1	1	0	0	0	0	2
Hepatitis A (acute)	1	1	0	0	2	1	0	5
Hepatitis B (acute)	3	2	3	2	3	5	4	22
Hepatitis B (chronic)	51	19	36	36	36	44	32	254
Hepatitis C (acute)	3	0	2	5	0	4	2	16
Hepatitis C (chronic)	448	488	495	465	465	465	415	3241
Latent Tuberculosis	0	0	0	0	0	3	0	3
Legionellosis	1	1	1	0	2	2	1	8
Leptospirosis	0	0	0	0	0	0	1	1
Listeriosis	1	0	0	0	1	1	0	3
Lyme disease	1	1	3	1	1	5	5	17
Malaria	2	2	0	0	1	2	0	7
Measles	0	0	1	1	0	0	0	2
Meningococcal Disease	3	3	7	3	2	5	1	24
Mumps	1	2	0	0	0	0	0	3
Pertussis	21	16	18	23	24	31	42	175
Q fever	0	1	0	0	0	0	0	1
Salmonella	29	26	10	24	35	40	45	209
Shigella	6	3	3	10	2	1	3	28
Syphilis	12	18	23	9	8	10	10	90
Taeniasis	1	0	1	1	1	0	0	4
Tuberculosis	14	10	8	19	21	13	3	88
Vibrio parahaemolytic	0	0	0	0	0	0	2	2
Yersinia	1	2	4	3	2	0	2	14
YTD	1972	1705	2307	1984	1991	2248	1890	14097

Reported Cases of Select Notifiable Diseases or Conditions in Oregon by County  
January-July 2012

	Baker	Benton	Clackamas	Clatsop	Columbia	Coos	Crook	Curry	Deschutes	Douglas	Gilliam	Grant	Harney
Botulism	0	0	0	0	0	0	0	0	3	0	0	1	0
Campylobacter	2	9	52	4	3	12	2	2	31	9	1	2	0
Chlamydia	27	212	541	52	74	102	31	21	359	148	0	7	12
Ciguatera	0	0	0	0	0	0	0	0	0	0	0	0	0
Cryptosporidiosis	0	0	21	1	2	1	0	0	0	6	0	0	0
Dengue Fever	0	0	0	0	0	0	0	0	1	0	0	0	0
E. coli(STEC)	0	0	12	1	0	0	1	0	4	10	0	0	2
Ehrlichiosis	0	0	0	0	0	1	0	0	0	0	0	0	0
Giardiasis	0	7	11	1	1	1	0	1	14	6	0	0	0
Gonorrhea	0	21	62	2	3	3	0	0	3	1	1	0	0
HIV_AIDS	0	4	15	1	4	2	0	0	3	1	0	0	0
HUS	0	0	1	0	0	0	0	0	0	1	0	0	0
Haemophilus influenza	0	0	2	0	0	0	0	1	1	1	0	0	0
Hantavirus pulmonary	0	0	0	0	0	0	0	0	0	0	0	0	0
Hepatitis A (acute)	0	0	0	0	0	0	0	0	0	0	0	0	0
Hepatitis B (acute)	0	0	1	0	1	0	0	0	0	0	0	0	0
Hepatitis B (chronic)	0	6	16	2	0	2	0	0	3	1	1	0	0
Hepatitis C (acute)	0	2	1	0	0	0	0	0	2	2	0	0	1
Hepatitis C (chronic)	12	24	164	34	37	80	15	20	112	85	1	0	5
Latent Tuberculosis	0	0	0	0	0	0	0	0	0	0	0	0	0
Legionellosis	0	0	3	0	1	0	0	0	1	0	0	0	0
Listeriosis	0	0	3	0	1	0	0	0	1	1	0	0	0
Lyme disease	0	4	1	0	0	0	0	1	1	9	0	0	0
Malaria	0	1	0	0	0	0	1	0	0	0	0	0	0
Measles	0	0	0	0	0	0	0	0	0	0	0	0	0
Meningococcal Disease	0	0	1	1	0	1	2	1	1	1	0	0	0
Pertussis	0	10	48	18	7	2	0	0	3	0	0	0	1
Plague	0	0	0	0	0	0	2	0	0	0	0	0	0
Q fever	0	0	0	0	0	0	0	0	0	0	0	0	0
Relapsing Fever	0	0	0	0	0	0	0	0	1	0	0	0	0
Rocky Mtn Spotted fev	0	1	0	0	0	0	0	0	0	0	0	0	0
Salmonella	1	2	26	3	0	2	1	0	6	9	0	0	1
Shigella	0	0	1	0	0	2	0	0	0	0	0	0	0
Syphilis	0	0	12	1	0	0	1	0	1	1	0	1	0
Taeniasis	0	0	0	0	0	0	0	0	0	0	0	0	0
Tuberculosis	0	2	2	0	0	1	0	0	0	0	0	0	0
Vibrio parahaemolytic	0	0	0	0	0	0	0	0	0	0	0	0	0
Yersinia	0	0	3	0	0	1	0	0	0	0	0	0	0
All	42	305	999	121	134	213	56	47	551	292	4	11	22

Reported Cases of Select Notifiable Diseases or Conditions in Oregon by County  
January-July 2012

	Hood River	Jackson	Jefferson	Josephine	Klamath	Lake	Lane	Lincoln	Linn	Malheur	Marion	Morrow	Multnomah
Botulism	0	0	0	0	0	0	0	0	0	0	0	0	0
Campylobacter	5	24	4	4	11	0	42	6	24	5	43	1	105
Chlamydia	44	356	85	100	122	4	876	67	224	63	812	17	2083
Ciguatera	0	0	0	0	0	0	0	0	0	0	0	0	1
Cryptosporidiosis	3	6	0	0	1	0	5	3	4	2	4	0	39
Dengue Fever	0	0	0	0	0	0	0	0	0	0	0	0	1
E. coli(STEC)	0	2	1	1	4	3	5	0	8	0	13	0	6
Ehrlichiosis	0	0	0	0	0	0	0	0	0	0	0	0	0
Giardiasis	0	4	0	3	4	1	21	3	15	0	12	0	72
Gonorrhea	1	20	3	7	21	0	44	2	18	0	51	0	437
HIV/AIDS	0	8	0	0	0	0	5	0	2	0	8	0	88
HUS	0	0	0	0	1	0	0	0	0	0	1	0	1
Haemophilus influenza	0	3	1	1	1	0	5	1	1	0	8	0	10
Hantavirus pulmonary	0	0	1	0	0	0	0	0	1	0	0	0	0
Hepatitis A (acute)	0	0	0	0	1	0	0	0	0	0	0	0	0
Hepatitis B (acute)	0	0	0	0	0	0	2	1	0	1	2	0	2
Hepatitis B (chronic)	1	5	1	3	1	0	10	2	3	3	14	0	96
Hepatitis C (acute)	0	0	0	1	1	0	3	0	0	0	6	0	4
Hepatitis C (chronic)	12	147	38	62	41	4	276	55	102	41	252	4	803
Latent Tuberculosis	6	1	0	0	0	0	0	0	0	0	0	0	0
Legionellosis	0	1	0	1	0	0	4	1	0	0	0	0	3
Listeriosis	0	0	0	0	0	0	2	0	0	0	0	0	2
Lyme disease	1	3	0	10	0	0	1	0	0	0	0	0	5
Malaria	0	0	0	0	0	0	1	0	0	0	1	0	2
Measles	0	0	0	0	0	0	0	0	0	0	0	0	0
Meningococcal Disease	0	0	0	1	0	0	5	0	0	1	0	0	2
Pertussis	4	3	1	2	0	0	16	6	6	9	28	0	164
Plague	0	0	0	0	0	0	0	0	0	0	0	0	0
Q fever	0	0	0	0	0	0	0	0	2	1	0	0	0
Relapsing Fever	0	0	0	0	0	0	0	0	0	0	0	0	1
Rocky Mtn Spotted fev	0	0	0	0	0	0	0	0	0	0	0	0	0
Salmonella	1	8	0	3	5	0	25	2	9	3	19	1	36
Shigella	0	1	0	0	0	0	4	1	0	0	5	0	22
Syphilis	0	0	0	0	0	0	2	0	1	0	3	0	120
Taeniasis	0	0	0	0	0	0	0	0	0	0	0	0	2
Tuberculosis	0	0	1	0	0	0	1	0	1	0	3	0	11
Vibrio parahaemolytic	0	0	0	0	0	0	0	0	0	0	0	0	4
Yersinia	0	2	0	1	0	0	0	0	0	0	3	0	3
All	78	594	136	200	214	12	1355	150	421	129	1288	23	4125

Reported Cases of Select Notifiable Diseases or Conditions in Oregon by County  
January-July 2012

	Polk	Sherman	State Of O	Tillamook	Umatilla	Union	Wallowa	Wasco	Washington	Wheeler	Yamhill	All
Botulism	0	0	0	0	0	0	0	0	0	0	0	4
Campylobacter	11	0	0	1	7	5	3	4	79	0	12	525
Chlamydia	139	4	0	29	151	52	2	54	1007	0	144	8021
Ciguatera	0	0	0	0	0	0	0	0	0	0	0	1
Cryptosporidiosis	0	0	0	8	2	0	0	0	21	0	0	129
Dengue Fever	0	0	0	0	0	0	0	0	1	0	0	3
E. coli(STEC)	1	0	0	1	1	0	1	0	8	0	2	87
Ehrlichiosis	0	0	0	0	0	0	0	0	0	0	0	1
Giardiasis	1	0	0	0	8	1	0	1	19	0	5	212
Gonorrhea	2	0	0	2	3	1	0	1	92	0	5	806
HIV_AIDS	0	0	0	1	2	1	0	1	19	0	3	168
HUS	0	0	0	0	0	0	0	0	2	0	0	7
Haemophilus influenza	0	0	0	0	2	1	0	0	4	0	1	44
Hantavirus pulmonary	0	0	0	0	0	0	0	0	0	0	0	2
Hepatitis A (acute)	0	0	0	0	0	0	0	0	0	0	0	1
Hepatitis B (acute)	0	0	0	0	1	1	0	0	4	0	0	16
Hepatitis B (chronic)	2	0	0	2	3	4	0	1	51	0	2	235
Hepatitis C (acute)	0	0	0	0	0	0	0	0	2	0	0	25
Hepatitis C (chronic)	31	2	1	16	68	11	0	18	183	2	78	2836
Latent Tuberculosis	0	0	0	0	1	0	0	0	0	0	0	8
Legionellosis	1	0	0	0	0	0	1	1	2	0	0	20
Listeriosis	0	0	0	0	0	1	0	0	2	0	0	13
Lyme disease	0	0	0	0	0	0	0	1	2	0	0	39
Malaria	0	0	0	0	0	0	0	0	2	0	0	8
Measles	0	0	0	0	0	0	0	0	1	0	0	1
Meningococcal Disease	0	0	0	0	0	0	0	1	1	0	0	19
Pertussis	16	0	0	0	7	1	0	2	201	0	21	576
Plague	0	0	0	0	0	0	0	0	0	0	0	2
Q fever	0	0	0	0	0	0	0	0	0	0	0	3
Relapsing Fever	0	0	0	0	0	0	0	0	0	0	0	2
Rocky Mtn Spotted fev	0	0	0	0	0	0	0	0	0	0	0	1
Salmonella	5	1	0	1	3	1	0	2	25	0	8	209
Shigella	0	0	0	0	0	2	0	0	6	0	0	44
Syphilis	1	0	0	0	0	0	0	0	19	0	2	165
Taeniasis	0	0	0	0	0	0	0	0	0	0	0	2
Tuberculosis	1	0	0	0	0	0	0	0	5	0	1	29
Vibrio parahaemolytic	0	0	0	0	0	0	0	0	1	0	0	5
Yersinia	0	0	0	0	1	0	0	0	3	0	0	17
All	211	7	1	61	260	82	7	87	1762	2	284	14286



Reported Cases of Low Incident Notifiable Diseases or Conditions by Year in Oregon  
January-July

	2002	2003	2004	2005	2006	2007	2008	2009	2010	2011	2012	Total
African spotted fever	0	1	0	0	0	0	0	0	0	0	0	1
Babesiosis	0	0	0	0	0	0	0	1	0	0	0	1
Botulism	0	1	2	0	0	0	1	0	0	2	4	10
Brucellosis	0	0	0	1	0	1	1	2	0	0	0	5
Ciguatera	0	0	0	0	0	0	0	0	0	0	1	1
Colorado Tick Fever	0	0	1	0	0	0	3	1	0	1	0	6
Cyclosporiasis	0	0	0	22	0	0	0	0	0	0	0	22
Dengue Fever	0	0	0	4	1	2	2	4	1	2	3	19
Ehrlichiosis	0	0	0	0	1	1	1	3	0	2	1	9
Filariasis	0	0	0	1	0	0	0	0	0	0	0	1
Hantavirus pulmonary	0	0	0	1	1	1	0	2	3	2	2	12
Leprosy	0	0	2	1	0	0	0	2	0	0	0	5
Leptospirosis	0	0	1	1	0	0	1	0	0	1	0	4
Measles	0	0	0	2	2	2	1	0	0	2	1	10
Mumps	0	0	0	0	15	0	0	1	1	3	0	20
Plague	0	0	0	0	0	0	0	0	0	0	2	2
Psittacosis	0	1	0	1	3	1	1	0	0	0	0	7
Q fever	0	1	3	1	0	2	0	2	1	1	3	14
Relapsing Fever	0	1	4	1	1	0	0	2	0	0	2	11
Rocky Mtn Spotted fev	0	0	2	2	2	2	2	0	1	0	1	12
Rubella	0	0	0	1	0	0	0	0	0	0	0	1
Taeniasis	0	1	0	5	1	1	3	41	1	4	2	59
Tick Paralysis	0	1	0	0	0	0	0	0	0	0	0	1
Tularemia	0	0	1	1	1	2	1	1	0	0	0	7
Typhus (murine)	0	0	0	1	0	0	0	0	0	0	0	1
Total	0	7	16	46	28	15	17	62	8	20	22	241

Oregon Campylobacter Cases  
January-July

	Age Group in Years												Total
	00-04	05-09	10-14	15-19	20-24	25-29	30-39	40-49	50-59	60-69	70-79	80+	
2003	51	11	12	18	21	31	63	68	50	20	14	10	369
2004	35	16	16	23	22	30	48	62	56	42	26	10	386
2005	36	21	20	24	22	24	63	59	66	38	22	10	405
2006	42	19	14	20	42	23	51	60	57	32	22	7	389
2007	45	23	10	23	38	21	56	58	66	31	24	16	411
2008	53	18	15	19	23	24	57	64	82	41	11	6	413
2009	57	20	10	16	28	32	67	65	71	48	25	17	456
2010	63	20	11	28	28	50	54	57	57	49	27	11	455
2011	63	24	21	22	27	44	73	64	82	66	27	22	535
2012	44	13	13	19	33	32	82	86	82	80	25	16	525
Total	489	185	142	212	284	311	614	643	669	447	223	125	4344

	Sex			Total
	F	M	U	
2003	167	203	0	370
2004	179	207	0	386
2005	189	215	1	405
2006	186	203	0	389
2007	178	229	4	411
2008	190	223	0	413
2009	216	242	0	458
2010	192	264	0	456
2011	257	280	0	537
2012	257	268	0	525
Total	2011	2334	5	4350

	Race					Total
	A	B	N	W	U	
2003	8	0	7	239	116	370
2004	3	0	2	252	129	386
2005	2	2	5	203	193	405
2006	4	3	1	193	188	389
2007	3	1	0	166	241	411
2008	1	4	5	190	213	413
2009	6	2	1	202	247	458
2010	2	6	3	238	207	456
2011	5	2	0	263	267	537
2012	4	1	3	285	232	525
Total	38	21	27	2231	2033	4350

Baker	5	0	0	3	1	2	2	2	4	2	21
Benton	17	12	12	17	15	12	15	25	10	9	144
Clackamas	33	45	40	33	50	38	38	33	60	52	422
Clatsop	8	3	2	4	9	2	2	5	4	4	43
Columbia	6	5	3	6	0	2	1	2	3	3	31
Coos	5	5	4	4	7	10	9	5	18	12	79
Crook	2	2	2	1	1	5	6	6	4	2	31
Curry	4	2	2	0	1	6	7	4	5	2	33
Deschutes	25	24	23	18	27	28	17	33	33	31	259
Douglas	11	4	9	6	9	11	5	9	12	9	85
Gilliam	0	0	0	0	0	0	0	0	1	1	2
Grant	0	3	0	0	0	3	1	0	3	2	12
Harney	0	2	3	4	3	3	4	1	3	0	23
Hood River	1	2	1	1	1	1	2	2	3	5	19
Jackson	9	13	19	13	23	21	24	12	30	24	188
Jefferson	1	3	3	4	2	4	4	0	3	4	28
Josephine	2	10	5	8	2	1	4	7	6	4	49
Klamath	15	6	17	9	3	5	8	5	15	11	94
Lake	1	4	2	1	1	1	3	3	2	0	18
Lane	23	36	44	35	37	49	44	50	40	42	400
Lincoln	4	4	5	6	1	1	4	5	5	6	41
Linn	10	13	14	18	12	17	24	15	18	24	165
Malheur	11	11	7	7	4	6	3	3	6	5	63
Marion	20	21	30	20	38	27	30	31	34	43	294
Morrow	4	3	1	0	0	1	4	1	3	1	18
Multnomah	66	68	77	70	82	76	109	107	105	105	865
Polk	2	2	6	4	4	5	6	6	4	11	50
Sherman	0	0	0	0	0	0	0	1	0	0	1
Tillamook	8	5	4	2	2	4	2	0	2	1	30
Umatilla	13	5	7	19	5	4	6	8	5	7	79
Union	5	5	3	6	5	6	2	2	6	5	45
Wallowa	1	2	0	0	0	1	0	2	0	3	9
Wasco	6	1	1	2	2	3	3	3	2	4	27
Washington	43	56	45	62	54	55	60	57	71	79	582
Wheeler	0	0	0	0	0	0	0	0	0	0	0
Yamhill	9	9	14	6	10	3	9	11	17	12	100
Total	370	386	405	389	411	413	458	456	537	525	4350

Oregon Chlamydia Cases  
January-July

	Age Group in Years												Total
	00-04	05-09	10-14	15-19	20-24	25-29	30-39	40-49	50-59	60-69	70-79	80+	
2003	13	1	60	1337	1646	679	387	105	25	4	1	0	4258
2004	6	1	60	1464	1853	761	457	114	26	0	1	0	4743
2005	7	1	45	1525	1946	864	562	122	32	2	2	0	5108
2006	3	0	57	1586	2059	921	580	127	26	3	0	0	5362
2007	5	1	51	1612	2125	968	603	144	25	6	1	0	5541
2008	3	1	54	1856	2220	987	636	139	36	3	0	0	5935
2009	2	1	52	2035	2344	997	641	144	33	7	3	0	6259
2010	2	0	56	2084	2483	1060	676	155	37	9	4	0	6566
2011	3	1	67	2493	3120	1181	786	235	42	8	3	0	7939
2012	2	1	67	2496	3141	1241	794	201	58	15	3	0	8019
Total	46	8	569	18488	22937	9659	6122	1486	340	57	18	0	59730

	Sex			Total
	F	M	U	
2003	3091	1167	0	4258
2004	3380	1363	0	4743
2005	3488	1620	0	5108
2006	3664	1698	0	5362
2007	3892	1649	0	5541
2008	4117	1818	0	5935
2009	4393	1866	0	6259
2010	4532	2034	0	6566
2011	5478	2462	0	7940
2012	5641	2380	0	8021
Total	41676	18057	0	59733

	Race					Total
	A	B	N	W	U	
2003	135	322	72	3224	505	4258
2004	116	372	103	3516	636	4743
2005	140	465	115	3659	729	5108
2006	167	477	108	3954	656	5362
2007	147	448	125	4191	630	5541
2008	144	509	132	4244	906	5935
2009	121	481	96	4398	1163	6259
2010	130	446	140	4541	1309	6566
2011	116	472	141	4538	2673	7940
2012	108	416	156	5102	2239	8021
Total	1324	4408	1188	41367	11446	59733

Baker	1	11	11	9	9	19	17	16	3	27	123
Benton	60	87	94	71	110	118	124	127	182	212	1185
Clackamas	270	271	348	419	328	459	458	538	542	541	4174
Clatsop	49	72	47	53	62	47	54	64	87	52	587
Columbia	21	47	44	37	50	50	77	80	75	74	555
Coos	71	80	72	73	41	51	58	112	76	102	736
Crook	16	20	18	25	17	26	35	34	10	31	232
Curry	15	13	13	12	13	6	8	11	17	21	129
Deschutes	52	132	190	186	236	257	228	267	260	359	2167
Douglas	93	95	77	121	121	112	116	152	110	148	1145
Gilliam	1	2	0	0	2	0	1	3	4	0	13
Grant	2	0	3	6	5	2	2	5	4	7	36
Harney	11	1	3	1	5	4	4	10	14	12	65
Hood River	14	18	15	19	31	15	19	28	27	44	230
Jackson	283	278	249	303	316	317	251	286	316	356	2955
Jefferson	13	39	50	47	54	62	21	59	83	85	513
Josephine	34	81	75	95	92	88	89	77	129	100	860
Klamath	57	74	51	61	71	66	68	97	127	122	794
Lake	2	4	2	8	7	7	3	6	2	4	45
Lane	493	458	498	589	466	553	698	739	721	876	6091
Lincoln	53	44	57	62	59	54	45	37	42	67	520
Linn	82	128	106	132	154	181	173	196	225	224	1601
Malheur	23	24	55	41	39	41	50	49	80	63	465
Marion	424	513	501	497	574	653	703	794	891	812	6362
Morrow	15	7	8	17	12	13	9	15	10	17	123
Multnomah	1393	1422	1674	1673	1710	1681	1783	1507	2465	2083	17391
Polk	38	52	55	80	70	95	92	132	124	139	877
Sherman	1	2	1	2	1	0	1	0	3	4	15
Tillamook	14	15	11	21	23	22	22	13	42	29	212
Umatilla	108	104	115	102	120	91	129	118	131	151	1169
Union	13	17	28	27	22	22	19	47	45	52	292
Wallowa	4	4	3	1	3	2	2	5	2	2	28
Wasco	17	26	16	20	41	25	42	32	39	54	312
Washington	431	528	536	468	573	666	721	780	907	1007	6617
Wheeler	1	0	0	0	0	0	0	1	0	0	2
Yamhill	83	74	82	84	104	130	137	129	145	144	1112
Total	4258	4743	5108	5362	5541	5935	6259	6566	7940	8021	59733

Oregon Cryptosporidiosis Cases  
January-July

	Age Group in Years												Total
	00-04	05-09	10-14	15-19	20-24	25-29	30-39	40-49	50-59	60-69	70-79	80+	
2003	8	1	2	2	1	4	3	3	2	0	0	0	26
2004	1	3	0	1	2	1	2	5	3	1	1	0	20
2005	5	0	1	0	2	7	4	6	3	0	1	0	29
2006	5	5	5	1	2	8	4	5	6	2	0	3	46
2007	2	2	0	6	5	9	10	9	6	1	5	1	56
2008	10	1	3	4	4	5	7	4	5	5	1	0	49
2009	6	3	4	3	10	10	21	24	15	13	11	8	128
2010	5	0	0	3	9	5	12	12	13	8	4	3	74
2011	9	5	4	8	10	9	15	16	11	14	13	3	117
2012	3	7	6	8	9	12	23	14	19	17	9	2	129
Total	54	27	25	36	54	70	101	98	83	61	45	20	674

	Sex			Total
	F	M	U	
2003	9	17	0	26
2004	9	11	0	20
2005	15	14	0	29
2006	25	22	0	47
2007	39	17	0	56
2008	24	25	0	49
2009	75	53	1	129
2010	42	32	0	74
2011	71	46	0	117
2012	78	51	0	129
Total	387	288	1	676

	Race					Total
	A	B	N	W	U	
2003	1	0	0	10	15	26
2004	0	0	0	12	8	20
2005	0	0	0	19	10	29
2006	0	1	0	28	18	47
2007	0	0	1	26	29	56
2008	0	2	0	44	3	49
2009	2	1	0	111	15	129
2010	2	3	2	61	6	74
2011	1	1	1	99	15	117
2012	4	0	1	113	11	129
Total	10	8	5	523	130	676

Baker	0	0	0	0	0	0	0	0	0	0	0	0	0
Benton	0	0	0	1	0	1	0	1	10	0	13		
Clackamas	2	4	4	2	5	12	28	9	12	21	99		
Clatsop	0	0	0	0	0	0	3	1	4	1	9		
Columbia	1	0	0	0	1	0	6	2	1	2	13		
Coos	1	1	0	0	0	0	0	1	0	1	4		
Crook	0	0	0	9	0	0	0	0	1	0	10		
Curry	0	0	0	0	0	0	2	0	0	0	2		
Deschutes	0	1	0	0	1	1	2	0	0	0	5		
Douglas	1	0	0	1	0	1	6	2	0	6	17		
Gilliam	0	0	0	0	0	0	0	0	0	0	0		
Grant	0	0	0	0	0	0	0	0	1	0	1		
Harney	0	0	0	0	0	2	1	0	0	0	3		
Hood River	0	0	0	1	1	1	1	0	0	3	7		
Jackson	1	1	6	8	15	6	23	6	1	6	73		
Jefferson	0	0	0	0	0	0	0	0	0	0	0		
Josephine	0	0	1	0	1	0	3	0	0	0	5		
Klamath	0	1	0	3	1	0	0	1	1	1	8		
Lake	0	0	0	1	0	0	0	0	0	0	1		
Lane	1	2	3	2	4	2	9	4	10	5	42		
Lincoln	1	0	0	0	0	0	1	1	2	3	8		
Linn	0	0	0	0	0	0	1	1	9	4	15		
Malheur	0	1	1	0	2	0	0	0	0	2	6		
Marion	0	0	2	1	0	0	4	7	7	4	25		
Morrow	0	0	1	0	1	0	0	0	1	0	3		
Multnomah	12	4	9	13	19	14	21	26	34	39	191		
Polk	0	0	0	0	0	0	0	0	0	0	0		
Sherman	0	0	0	0	0	0	0	0	0	0	0		
Tillamook	0	0	0	1	2	4	2	0	3	8	20		
Umatilla	0	0	0	0	0	0	0	0	0	2	2		
Union	0	0	0	0	0	0	1	0	1	0	2		
Wallowa	0	0	0	0	0	0	0	0	0	0	0		
Wasco	0	0	0	0	0	0	0	1	0	0	1		
Washington	6	5	2	4	3	5	13	10	17	21	86		
Wheeler	0	0	0	0	0	0	0	0	0	0	0		
Yamhill	0	0	0	0	0	0	2	1	2	0	5		
Total	26	20	29	47	56	49	129	74	117	129	676		

Oregon E. coli(STEC) Cases  
January-July

	Age Group in Years												Total
	00-04	05-09	10-14	15-19	20-24	25-29	30-39	40-49	50-59	60-69	70-79	80+	
2003	7	2	2	0	1	0	3	1	1	2	1	1	21
2004	7	8	1	1	2	1	2	2	3	0	1	0	28
2005	8	4	17	1	1	0	3	3	3	0	0	0	40
2006	4	6	4	2	1	3	4	3	3	4	2	3	39
2007	4	2	2	2	3	1	1	3	4	3	1	3	29
2008	6	3	2	5	2	1	1	1	2	0	2	0	25
2009	5	2	1	4	0	1	1	1	2	2	0	1	20
2010	8	3	6	6	1	2	2	4	0	4	4	1	41
2011	17	5	6	9	4	3	1	1	1	2	2	2	53
2012	27	8	15	5	5	5	6	2	5	3	2	4	87
Total	93	43	56	35	20	17	24	21	24	20	15	15	383

	Sex			Total
	F	M	U	
2003	13	8	0	21
2004	15	13	0	28
2005	21	19	0	40
2006	16	23	0	39
2007	18	11	0	29
2008	12	13	0	25
2009	12	8	0	20
2010	18	23	0	41
2011	28	25	0	53
2012	37	50	0	87
Total	190	193	0	383

	Race					Total
	A	B	N	W	U	
2003	0	0	1	18	2	21
2004	0	0	0	21	7	28
2005	3	0	0	34	3	40
2006	1	0	0	37	1	39
2007	0	1	0	26	2	29
2008	2	0	0	22	1	25
2009	1	0	0	17	2	20
2010	0	0	0	39	2	41
2011	0	0	0	50	3	53
2012	0	0	4	73	10	87
Total	7	1	5	337	33	383

Baker	0	0	0	0	0	0	0	0	1	0	1
Benton	0	1	3	1	3	0	1	2	3	0	14
Clackamas	2	0	5	5	2	0	3	3	4	12	36
Clatsop	0	1	0	0	1	0	0	0	3	1	6
Columbia	0	0	0	0	0	0	0	0	0	0	0
Coos	1	0	0	0	1	0	0	0	0	0	2
Crook	0	1	1	1	0	1	0	1	0	1	6
Curry	0	0	0	0	0	0	0	0	0	0	0
Deschutes	0	0	0	3	1	1	0	2	2	4	13
Douglas	1	1	1	2	1	3	4	1	7	10	31
Gilliam	0	0	0	0	0	0	0	0	0	0	0
Grant	0	0	0	0	0	0	1	0	1	0	2
Harney	0	0	1	0	0	0	0	0	0	2	3
Hood River	0	0	0	0	0	0	0	0	0	0	0
Jackson	0	3	1	2	1	1	1	4	4	2	19
Jefferson	0	0	0	0	0	0	0	0	0	1	1
Josephine	0	0	1	0	0	0	0	0	0	1	2
Klamath	1	0	0	1	0	0	0	0	1	4	7
Lake	0	0	0	0	1	1	0	0	0	3	5
Lane	1	2	10	3	1	1	0	1	2	5	26
Lincoln	0	0	0	0	1	1	0	0	0	0	2
Linn	1	0	3	1	3	1	0	4	3	8	24
Malheur	2	2	0	0	0	0	0	0	3	0	7
Marion	4	6	4	5	2	5	0	4	2	13	45
Morrow	0	0	0	0	2	0	0	0	0	0	2
Multnomah	4	2	6	6	7	5	1	7	9	6	53
Polk	1	1	1	1	1	1	2	2	0	1	11
Sherman	0	0	0	0	0	0	0	0	0	0	0
Tillamook	1	1	0	0	0	0	0	0	0	1	3
Umatilla	2	0	0	3	0	2	0	0	1	1	9
Union	0	0	0	0	0	0	0	0	0	0	0
Wallowa	0	0	0	0	0	0	0	0	0	1	1
Wasco	0	0	0	0	0	0	0	2	0	0	2
Washington	0	5	3	4	1	1	5	6	5	8	38
Wheeler	0	0	0	0	0	0	0	0	1	0	1
Yamhill	0	2	0	1	0	1	2	2	1	2	11
Total	21	28	40	39	29	25	20	41	53	87	383

Oregon Giardiasis Cases  
January-July

	Age Group in Years												Total
	00-04	05-09	10-14	15-19	20-24	25-29	30-39	40-49	50-59	60-69	70-79	80+	
2003	43	22	6	8	17	11	24	34	22	10	8	0	205
2004	32	19	11	5	17	17	36	35	32	18	6	2	230
2005	43	25	6	9	7	10	30	27	35	8	5	3	208
2006	39	20	5	8	12	15	39	32	27	20	6	1	224
2007	41	17	5	7	19	11	26	37	34	18	8	4	227
2008	48	22	13	12	12	16	38	27	38	26	4	4	260
2009	36	27	16	9	14	18	22	22	21	21	5	1	212
2010	55	19	9	8	10	14	32	32	32	18	7	5	241
2011	39	17	12	10	15	17	20	35	28	20	3	3	219
2012	25	14	10	17	17	11	31	27	27	20	10	3	212
Total	401	202	93	93	140	140	298	308	296	179	62	26	2238

	Sex			Total
	F	M	U	
2003	102	103	2	207
2004	103	128	0	231
2005	105	102	2	209
2006	103	119	6	228
2007	99	126	3	228
2008	117	142	1	260
2009	95	116	2	213
2010	110	132	1	243
2011	90	128	1	219
2012	91	121	0	212
Total	1015	1217	18	2250

	Race					Total
	A	B	N	W	U	
2003	8	2	0	102	95	207
2004	4	6	5	117	99	231
2005	6	6	2	101	94	209
2006	2	7	0	107	112	228
2007	11	11	2	97	107	228
2008	13	20	0	112	115	260
2009	7	9	3	82	112	213
2010	3	31	1	87	121	243
2011	1	23	2	73	120	219
2012	3	12	4	79	114	212
Total	58	127	19	957	1089	2250

Baker	0	0	2	3	0	0	0	0	0	0	0	5
Benton	5	3	4	6	6	13	6	7	7	7	7	64
Clackamas	17	15	19	19	16	15	14	14	13	11	11	153
Clatsop	1	9	5	2	2	1	0	1	1	1	1	23
Columbia	1	2	4	0	0	3	4	2	2	1	1	19
Coos	4	3	3	2	5	4	12	5	3	1	1	42
Crook	0	1	0	0	0	1	0	0	0	0	0	2
Curry	2	0	0	1	0	1	2	1	1	1	1	9
Deschutes	12	16	7	20	16	26	11	24	10	14	14	156
Douglas	9	5	15	9	5	11	4	3	4	6	6	71
Gilliam	0	0	0	0	0	0	0	0	1	0	0	1
Grant	0	0	0	0	0	2	0	1	0	0	0	3
Harney	0	0	0	1	0	0	0	0	1	0	0	2
Hood River	3	1	0	2	2	2	2	0	0	0	0	12
Jackson	9	11	6	18	10	10	15	7	9	4	4	99
Jefferson	1	4	0	1	0	1	1	1	2	0	0	11
Josephine	5	5	5	2	3	3	3	4	3	3	3	36
Klamath	5	0	1	3	4	4	3	3	5	4	4	32
Lake	1	0	0	1	0	0	1	1	0	1	1	5
Lane	19	42	15	25	35	25	21	18	25	21	21	246
Lincoln	1	3	2	3	3	0	3	6	1	3	3	25
Linn	11	7	3	4	8	6	4	5	2	15	15	65
Malheur	3	1	0	0	1	1	0	2	1	0	0	9
Marion	19	9	14	14	12	13	4	9	11	12	12	117
Morrow	0	0	0	0	1	0	1	0	0	0	0	2
Multnomah	44	50	59	52	63	72	68	84	78	72	72	642
Polk	6	3	3	1	6	6	5	5	3	1	1	39
Sherman	0	0	0	0	0	0	0	0	0	0	0	0
Tillamook	1	0	4	1	1	4	1	0	1	0	0	13
Umatilla	9	2	4	0	1	3	2	7	2	8	8	38
Union	2	0	0	0	0	1	3	2	1	1	1	10
Wallowa	0	0	0	1	1	0	1	0	0	0	0	3
Warm Sprin	0	0	0	0	0	0	1	0	0	0	0	1
Wasco	1	2	0	2	0	0	2	1	4	1	1	13
Washington	13	35	32	33	23	29	13	26	23	19	19	246
Wheeler	0	0	0	0	0	0	0	0	0	0	0	0
Yamhill	3	2	2	2	4	3	6	4	5	5	5	36
Total	207	231	209	228	228	260	213	243	219	212	212	2250

Oregon Gonorrhea Cases  
January-July

	Age Group in Years												Total
	00-04	05-09	10-14	15-19	20-24	25-29	30-39	40-49	50-59	60-69	70-79	80+	
2003	0	0	1	96	158	94	143	78	13	1	1	0	585
2004	0	1	5	99	187	131	128	57	20	4	3	0	635
2005	0	0	9	155	239	150	210	96	35	8	3	0	905
2006	0	0	5	130	209	186	186	98	24	5	0	1	844
2007	0	0	4	125	208	122	130	50	21	2	1	0	663
2008	0	1	2	123	214	141	148	76	32	5	0	2	744
2009	0	0	6	143	186	112	117	64	12	3	0	0	643
2010	0	0	2	124	186	117	87	48	17	0	0	0	581
2011	1	1	8	136	238	150	134	69	32	3	0	0	772
2012	0	0	4	98	204	163	180	106	43	7	1	0	806
Total	1	3	46	1229	2029	1366	1463	742	249	38	9	3	7178

	Sex			Total
	F	M	U	
2003	227	358	0	585
2004	288	347	0	635
2005	377	528	0	905
2006	343	501	0	844
2007	306	357	0	663
2008	339	405	0	744
2009	287	356	0	643
2010	270	311	0	581
2011	343	429	0	772
2012	276	530	0	806
Total	3056	4122	0	7178

	Race					Total
	A	B	N	W	U	
2003	9	85	5	438	48	585
2004	9	100	8	446	72	635
2005	27	175	11	559	133	905
2006	17	136	24	602	65	844
2007	13	142	6	438	64	663
2008	17	136	10	511	70	744
2009	9	105	7	456	66	643
2010	7	111	8	362	93	581
2011	9	172	6	468	117	772
2012	17	107	19	539	124	806
Total	134	1269	104	4819	852	7178

Baker	0	0	0	0	0	1	0	1	1	0	3
Benton	11	9	9	10	10	4	12	11	7	21	104
Clackamas	31	47	63	61	30	46	37	34	47	62	458
Clatsop	2	5	4	12	3	2	1	2	2	2	35
Columbia	2	6	9	9	2	6	0	3	7	3	47
Coos	2	1	1	2	1	3	9	2	1	3	25
Crook	0	1	0	0	0	1	0	5	2	0	9
Curry	0	1	1	1	0	0	0	0	0	0	3
Deschutes	1	2	2	2	6	3	3	3	1	3	26
Douglas	3	4	4	8	3	1	1	4	1	1	30
Gilliam	0	0	0	0	0	0	0	0	0	1	1
Grant	0	0	0	0	0	0	0	0	0	0	0
Harney	0	0	0	0	1	0	0	0	0	0	1
Hood River	1	2	1	0	2	2	2	1	2	1	14
Jackson	29	42	30	24	33	17	20	21	24	20	260
Jefferson	0	0	3	7	2	1	0	2	0	3	18
Josephine	4	5	5	3	3	4	5	5	5	7	46
Klamath	1	1	2	1	3	4	1	5	12	21	51
Lake	0	0	0	1	0	0	0	0	0	0	1
Lane	47	20	20	67	23	38	92	24	55	44	430
Lincoln	2	5	3	5	3	1	8	7	1	2	37
Linn	10	15	15	13	21	14	15	21	16	18	158
Malheur	3	1	1	4	3	2	2	1	0	0	17
Marion	61	58	55	73	59	84	65	54	49	51	609
Morrow	0	0	0	0	2	1	0	0	1	0	4
Multnomah	317	326	561	420	364	412	299	279	453	437	3868
Polk	5	4	9	6	3	6	8	14	9	2	66
Sherman	0	0	0	0	0	0	0	0	0	0	0
Tillamook	0	0	1	4	2	1	1	1	0	2	12
Umatilla	3	2	3	1	7	1	4	8	2	3	34
Union	0	2	1	1	1	0	0	0	2	1	8
Wallowa	0	0	0	0	0	0	0	0	0	0	0
Wasco	2	3	2	1	6	3	0	4	0	1	22
Washington	43	61	84	103	67	59	55	64	65	92	693
Wheeler	0	0	0	0	0	0	0	0	0	0	0
Yamhill	5	12	16	5	3	27	3	5	7	5	88
Total	585	635	905	844	663	744	643	581	772	806	7178

Oregon Haemophilus influenzae Cases  
January-July

	Age Group in Years												Total
	00-04	05-09	10-14	15-19	20-24	25-29	30-39	40-49	50-59	60-69	70-79	80+	
2003	2	0	0	0	0	0	1	1	4	8	6	3	25
2004	2	2	1	0	0	0	1	3	4	3	5	8	29
2005	4	1	0	2	1	0	1	1	6	5	7	7	35
2006	2	1	0	0	1	0	0	3	2	3	2	10	24
2007	7	0	0	0	2	0	2	2	2	10	6	13	44
2008	2	1	1	0	0	1	3	3	5	8	2	8	34
2009	5	0	0	0	1	1	0	1	5	6	5	7	31
2010	2	2	1	1	1	0	0	4	7	7	5	8	38
2011	2	1	0	1	0	2	3	1	8	14	11	11	54
2012	4	2	1	0	0	0	1	2	13	9	8	4	44
Total	32	10	4	4	6	4	12	21	56	73	57	79	358

	Sex			Total
	F	M	U	
2003	12	13	0	25
2004	16	13	0	29
2005	22	13	0	35
2006	15	9	0	24
2007	21	22	1	44
2008	21	13	0	34
2009	9	22	0	31
2010	20	18	0	38
2011	29	25	0	54
2012	23	21	0	44
Total	188	169	1	358

	Race					Total
	A	B	N	W	U	
2003	1	0	0	19	5	25
2004	0	0	1	20	8	29
2005	1	1	0	26	7	35
2006	1	0	0	16	7	24
2007	0	0	0	37	7	44
2008	1	0	1	26	6	34
2009	0	1	0	19	11	31
2010	0	0	0	32	6	38
2011	1	0	0	39	14	54
2012	0	1	1	29	13	44
Total	5	3	3	263	84	358

Baker	0	0	0	0	0	0	0	0	0	0	0	0	0
Benton	2	0	0	1	2	0	1	0	1	0	1	0	7
Clackamas	2	0	2	3	7	2	1	2	8	2	29		
Clatsop	0	0	0	0	0	0	0	1	1	0	2		
Columbia	0	0	0	0	1	0	1	1	1	0	4		
Coos	1	2	2	1	2	2	1	2	1	0	14		
Crook	0	0	1	0	0	1	0	0	0	0	2		
Curry	0	0	0	0	0	0	0	0	0	0	1	1	
Deschutes	2	1	1	0	2	3	1	1	1	1	13		
Douglas	0	2	0	0	0	1	0	1	3	1	8		
Gilliam	0	0	0	0	0	0	0	0	0	0	0	0	
Grant	0	0	0	0	0	0	0	0	0	0	0	0	
Harney	0	0	0	0	0	0	0	0	0	0	0	0	
Hood River	0	0	0	0	0	0	0	0	0	0	0	0	
Jackson	1	2	4	3	5	2	0	2	2	3	24		
Jefferson	0	0	1	0	0	0	1	0	0	1	3		
Josephine	2	0	1	3	2	4	4	2	7	1	26		
Klamath	1	2	0	0	2	0	0	0	2	1	8		
Lake	0	0	0	0	0	0	0	0	0	0	0	0	
Lane	1	3	2	6	9	4	4	5	4	5	43		
Lincoln	0	0	0	0	0	0	1	0	1	1	3		
Linn	1	1	2	0	0	4	0	1	1	1	11		
Malheur	0	0	0	0	0	0	0	0	0	0	0	0	
Marion	3	1	7	2	0	4	3	2	4	8	34		
Morrow	0	0	0	0	0	0	0	1	0	0	1		
Multnomah	4	7	8	4	4	4	9	5	14	10	69		
Polk	0	0	0	0	0	0	0	2	1	0	3		
Sherman	0	0	0	0	0	0	0	0	0	0	0	0	
Tillamook	0	0	0	0	0	0	0	1	0	0	1		
Umatilla	1	0	0	0	1	0	0	0	0	2	4		
Union	1	0	0	0	1	0	0	0	0	1	3		
Wallowa	0	0	0	0	0	0	0	0	0	0	0	0	
Wasco	0	0	0	0	0	0	1	0	0	0	1		
Washington	3	6	4	1	4	3	2	6	2	4	35		
Wheeler	0	0	0	0	0	0	0	0	0	0	0	0	
Yamhill	0	2	0	0	2	0	1	3	0	1	9		
Total	25	29	35	24	44	34	31	38	54	44	358		



Oregon Hepatitis A (acute) Cases  
January-July

	Age Group in Years												Total
	00-04	05-09	10-14	15-19	20-24	25-29	30-39	40-49	50-59	60-69	70-79	80+	
2003	0	1	3	3	2	7	8	3	8	1	3	2	41
2004	3	6	3	1	1	4	6	5	6	2	2	4	43
2005	1	0	1	3	4	1	2	2	2	1	2	4	23
2006	2	2	1	2	3	0	2	4	3	5	2	0	26
2007	0	0	0	0	3	3	2	2	1	1	1	1	14
2008	3	0	0	1	4	2	4	6	2	0	0	1	23
2009	0	1	1	0	0	2	1	0	5	1	0	0	11
2010	0	0	0	0	1	0	2	2	2	2	2	1	12
2011	0	0	0	0	0	1	0	2	0	0	2	0	5
2012	0	0	0	0	0	0	0	1	0	0	0	0	1
Total	9	10	9	10	18	20	27	27	29	13	14	13	199

	Sex			Total
	F	M	U	
2003	17	24	0	41
2004	20	23	0	43
2005	11	12	0	23
2006	13	13	0	26
2007	7	7	0	14
2008	10	13	0	23
2009	3	8	0	11
2010	4	8	0	12
2011	3	2	0	5
2012	0	1	0	1
Total	88	111	0	199

	Race					Total
	A	B	N	W	U	
2003	0	0	0	33	8	41
2004	2	0	1	33	7	43
2005	0	0	0	21	2	23
2006	1	0	0	23	2	26
2007	1	0	0	11	2	14
2008	1	1	0	17	4	23
2009	0	0	0	10	1	11
2010	0	1	0	11	0	12
2011	1	0	0	4	0	5
2012	0	0	0	1	0	1
Total	6	2	1	164	26	199

Baker	0	0	0	0	0	0	0	0	0	0	0	0	0
Benton	0	0	1	1	0	0	1	0	0	0	0	0	3
Clackamas	5	0	2	1	0	1	0	3	1	0	0	13	
Clatsop	0	0	0	1	0	0	0	0	0	0	0	1	
Columbia	1	0	0	0	0	1	0	0	0	0	0	2	
Coos	1	3	0	0	0	0	0	0	0	0	0	4	
Crook	0	1	0	0	0	0	0	0	0	0	0	1	
Curry	0	0	0	0	0	0	0	0	0	0	0	0	
Deschutes	2	1	0	1	1	1	0	2	0	0	0	8	
Douglas	2	3	2	0	0	1	0	0	0	0	0	8	
Gilliam	0	0	0	0	0	0	0	0	0	0	0	0	
Grant	1	0	0	0	0	0	0	0	0	0	0	1	
Harney	0	0	0	0	0	0	0	0	0	0	0	0	
Hood River	2	1	0	1	0	2	0	0	2	0	0	8	
Jackson	4	0	0	0	1	0	0	1	0	0	0	6	
Jefferson	1	1	0	0	0	0	0	0	0	0	0	2	
Josephine	0	0	1	0	1	1	0	0	0	0	0	3	
Klamath	2	0	0	0	1	0	1	0	0	0	1	5	
Lake	1	0	0	0	0	0	0	0	0	0	0	1	
Lane	1	4	5	4	0	2	3	1	1	0	0	21	
Lincoln	0	1	0	0	0	0	0	0	0	0	0	1	
Linn	0	3	0	0	0	0	0	0	0	0	0	3	
Malheur	0	1	0	0	1	0	0	0	0	0	0	2	
Marion	3	10	0	3	0	1	1	1	0	0	0	19	
Morrow	0	0	0	0	0	0	0	0	0	0	0	0	
Multnomah	3	8	6	2	7	7	2	2	0	0	0	37	
Polk	0	1	1	0	1	0	0	1	0	0	0	4	
Sherman	0	0	0	0	0	0	0	0	0	0	0	0	
Tillamook	1	0	0	6	0	0	0	0	0	0	0	7	
Umatilla	1	1	1	0	0	0	0	0	0	0	0	3	
Union	0	1	0	0	0	0	0	0	0	0	0	1	
Wallowa	0	0	0	0	0	0	0	0	0	0	0	0	
Wasco	2	0	0	0	0	0	0	0	0	0	0	2	
Washington	5	3	2	6	1	5	3	1	1	0	0	27	
Wheeler	0	0	0	0	0	0	0	0	0	0	0	0	
Yamhill	3	0	2	0	0	1	0	0	0	0	0	6	
Total	41	43	23	26	14	23	11	12	5	1	1	199	

Oregon Hepatitis B (acute) Cases  
January-July

	Age Group in Years												Total
	00-04	05-09	10-14	15-19	20-24	25-29	30-39	40-49	50-59	60-69	70-79	80+	
2003	0	0	0	4	8	9	20	20	4	3	1	1	70
2004	0	0	0	0	6	7	20	23	8	4	1	0	69
2005	0	0	0	1	5	7	10	18	17	4	2	0	64
2006	0	0	0	0	5	4	10	15	5	3	0	0	42
2007	0	0	0	0	2	3	12	13	6	0	1	0	37
2008	1	0	0	0	1	2	7	12	6	3	0	0	32
2009	0	0	0	0	1	1	9	6	6	2	1	0	26
2010	0	0	0	0	1	1	5	10	8	2	0	0	27
2011	0	0	0	0	1	1	2	8	6	4	0	0	22
2012	0	0	0	0	0	0	2	6	5	1	2	0	16
Total	1	0	0	5	30	35	97	131	71	26	8	1	405

	Sex			Total
	F	M	U	
2003	26	45	0	71
2004	26	43	0	69
2005	27	37	0	64
2006	15	27	0	42
2007	14	23	0	37
2008	4	28	0	32
2009	9	17	0	26
2010	10	17	0	27
2011	4	18	0	22
2012	7	9	0	16
Total	142	264	0	406

	Race					Total
	A	B	N	W	U	
2003	2	2	1	50	16	71
2004	5	0	2	52	10	69
2005	4	2	2	47	9	64
2006	1	2	0	37	2	42
2007	0	0	0	31	6	37
2008	1	1	1	22	7	32
2009	0	0	0	26	0	26
2010	0	0	0	27	0	27
2011	1	1	0	19	1	22
2012	1	0	0	13	2	16
Total	15	8	6	324	53	406

Baker	0	0	0	0	0	0	0	0	0	0	0	0	0
Benton	1	3	0	0	2	0	0	0	0	0	0	0	6
Clackamas	5	6	9	2	3	7	3	4	2	1	1	42	
Clatsop	2	1	0	2	0	0	0	0	1	0	0	6	
Columbia	0	1	1	1	2	0	0	0	0	1	0	6	
Coos	1	2	1	0	0	0	0	1	0	0	0	5	
Crook	0	0	0	0	0	0	0	1	0	0	0	1	
Curry	0	0	1	0	0	0	0	0	0	0	0	1	
Deschutes	3	1	2	3	0	0	3	1	2	0	0	15	
Douglas	3	4	1	2	3	1	1	1	0	0	0	16	
Gilliam	0	0	0	0	0	0	0	0	0	0	0	0	
Grant	1	0	0	0	0	0	0	0	0	0	0	1	
Harney	0	0	0	0	0	0	0	0	0	0	0	0	
Hood River	0	0	1	0	0	0	0	0	0	0	0	1	
Jackson	6	1	4	4	0	4	2	1	1	0	0	23	
Jefferson	0	0	0	0	0	0	0	0	0	0	0	0	
Josephine	2	1	4	4	1	1	0	0	0	0	0	13	
Klamath	1	1	0	0	0	0	0	0	0	0	0	2	
Lake	0	0	0	0	0	0	0	0	0	0	0	0	
Lane	11	12	7	7	6	4	3	2	3	2	2	57	
Lincoln	0	2	1	1	0	1	0	0	0	1	0	6	
Linn	1	9	4	2	2	3	0	1	2	0	0	24	
Malheur	1	1	1	0	0	0	0	0	0	1	0	4	
Marion	10	6	6	2	3	1	3	4	1	2	0	38	
Morrow	0	0	0	0	0	0	0	0	0	0	0	0	
Multnomah	19	11	9	8	9	4	7	5	5	2	0	79	
Polk	0	1	2	0	0	0	0	1	0	0	0	4	
Sherman	0	0	0	0	0	0	0	0	0	0	0	0	
Tillamook	0	0	0	0	0	0	0	1	0	0	0	1	
Umatilla	1	0	1	0	0	0	0	0	0	1	0	3	
Union	0	0	0	1	0	0	0	0	0	1	0	2	
Wallowa	0	0	0	0	0	0	0	0	0	0	0	0	
Wasco	0	0	0	0	0	0	0	2	1	0	0	3	
Washington	2	5	6	3	4	6	4	2	4	4	0	40	
Wheeler	0	0	0	0	0	0	0	0	0	0	0	0	
Yamhill	1	1	3	0	2	0	0	0	0	0	0	7	
Total	71	69	64	42	37	32	26	27	22	16	0	406	

Oregon Hepatitis B (chronic) Cases  
January-July

	Age Group in Years												Total
	00-04	05-09	10-14	15-19	20-24	25-29	30-39	40-49	50-59	60-69	70-79	80+	
2003	3	2	5	8	19	30	60	62	34	11	1	0	235
2004	2	1	1	13	23	26	102	62	41	19	4	0	294
2005	1	2	2	10	21	25	62	50	35	9	7	5	229
2006	2	0	4	9	26	27	83	58	26	12	2	4	253
2007	5	3	1	12	25	29	72	59	41	24	7	1	279
2008	6	4	3	15	25	27	76	71	53	22	7	7	316
2009	3	0	1	6	20	23	69	56	46	26	6	3	259
2010	4	0	1	9	11	26	62	57	42	23	7	1	243
2011	1	3	3	3	19	23	56	62	55	22	7	0	254
2012	2	2	2	5	13	28	51	51	42	30	5	4	235
Total	29	17	23	90	202	264	693	588	415	198	53	25	2597

	Sex			Total
	F	M	U	
2003	110	117	10	237
2004	123	164	7	294
2005	99	127	4	230
2006	124	127	3	254
2007	128	149	2	279
2008	127	185	5	317
2009	107	149	4	260
2010	112	131	0	243
2011	101	152	1	254
2012	102	133	0	235
Total	1133	1434	36	2603

	Race					Total
	A	B	N	W	U	
2003	106	7	0	63	61	237
2004	109	17	4	104	60	294
2005	89	12	3	69	57	230
2006	118	15	5	75	41	254
2007	115	16	4	80	64	279
2008	137	17	7	92	64	317
2009	107	23	6	73	51	260
2010	99	17	8	50	69	243
2011	119	12	13	68	42	254
2012	93	10	13	59	60	235
Total	1092	146	63	733	569	2603

Baker	0	0	0	0	0	1	1	0	0	0	2
Benton	3	5	3	3	3	10	3	2	1	6	39
Clackamas	15	24	17	15	18	25	23	21	25	16	199
Clatsop	1	1	3	3	4	1	0	0	0	2	15
Columbia	0	1	3	3	1	0	1	2	1	0	12
Coos	1	1	1	2	3	2	2	1	3	2	18
Crook	1	2	1	0	2	0	2	0	0	0	8
Curry	0	0	0	1	0	1	1	0	1	0	4
Deschutes	2	4	4	0	5	5	3	3	5	3	34
Douglas	3	7	2	2	0	6	5	5	4	1	35
Gilliam	0	0	0	0	0	0	0	0	0	1	1
Grant	0	0	0	0	1	0	0	0	0	0	1
Harney	0	0	0	0	1	0	0	1	0	0	2
Hood River	1	0	1	0	1	0	1	0	0	1	5
Jackson	10	11	6	6	5	11	4	8	6	5	72
Jefferson	0	1	1	0	0	1	0	1	0	1	5
Josephine	2	6	2	6	6	4	2	3	1	3	35
Klamath	2	0	1	1	3	3	1	5	5	1	22
Lake	0	0	0	0	0	0	0	0	1	0	1
Lane	10	20	13	16	23	12	13	7	11	10	135
Lincoln	4	2	3	0	2	1	5	2	1	2	22
Linn	2	4	5	5	3	5	4	5	1	3	37
Malheur	1	2	3	3	3	5	2	1	1	3	24
Marion	23	27	19	23	18	17	14	16	15	14	186
Morrow	0	1	0	0	1	0	2	0	1	0	5
Multnomah	107	104	72	109	111	125	115	104	132	96	1075
Polk	4	1	3	9	0	7	2	4	0	2	32
Sherman	0	0	0	0	0	0	0	0	0	0	0
Tillamook	0	0	1	0	1	2	0	0	1	2	7
Umatilla	3	6	0	1	3	5	3	1	3	3	28
Union	3	1	0	0	2	3	0	0	0	4	13
Wallowa	0	0	0	0	0	0	0	1	0	0	1
Wasco	0	0	3	0	1	2	1	1	0	1	9
Washington	37	59	57	45	55	58	49	48	32	51	491
Wheeler	0	0	0	0	0	0	0	0	0	0	0
Yamhill	2	4	6	1	3	5	1	1	3	2	28
Total	237	294	230	254	279	317	260	243	254	235	2603

Oregon Hepatitis C (acute) Cases  
January-July

	Age Group in Years												Total
	00-04	05-09	10-14	15-19	20-24	25-29	30-39	40-49	50-59	60-69	70-79	80+	
2003	0	0	0	0	1	1	1	3	1	0	0	0	7
2004	0	0	0	0	2	4	2	2	0	1	0	0	11
2005	0	0	0	2	0	5	1	2	3	0	0	0	13
2006	0	0	0	3	1	5	4	4	2	1	0	0	20
2007	0	0	0	0	1	2	1	7	3	0	0	0	14
2008	0	0	0	1	2	2	6	3	1	1	0	0	16
2009	0	0	0	2	1	3	8	1	1	0	0	0	16
2010	0	0	0	0	2	1	2	6	2	0	0	0	13
2011	0	0	0	2	3	3	2	4	2	0	0	0	16
2012	2	0	0	2	4	7	2	4	4	0	0	0	25
Total	2	0	0	12	17	33	29	36	19	3	0	0	151

	Sex			Total
	F	M	U	
2003	3	4	0	7
2004	7	4	0	11
2005	6	7	0	13
2006	14	6	0	20
2007	7	7	0	14
2008	8	8	0	16
2009	4	12	0	16
2010	9	4	0	13
2011	7	9	0	16
2012	9	16	0	25
Total	74	77	0	151

	Race					Total
	A	B	N	W	U	
2003	0	0	0	5	2	7
2004	1	0	1	7	2	11
2005	0	0	0	9	4	13
2006	0	0	0	11	9	20
2007	0	0	1	8	5	14
2008	0	0	0	11	5	16
2009	0	0	4	7	5	16
2010	0	0	0	11	2	13
2011	0	0	0	14	2	16
2012	0	0	1	20	4	25
Total	1	0	7	103	40	151

Baker	0	0	1	0	0	0	0	0	0	0	0	1
Benton	0	1	0	0	0	0	0	0	0	1	2	4
Clackamas	0	0	1	2	2	2	3	1	0	1	12	
Clatsop	0	1	0	1	0	0	1	0	0	0	3	
Columbia	0	1	0	0	0	0	0	0	0	0	1	
Coos	0	0	0	0	0	0	0	0	0	0	0	
Crook	0	0	0	0	0	0	0	0	0	0	0	
Curry	0	0	0	0	0	0	0	0	0	0	0	
Deschutes	0	2	0	2	0	0	0	0	1	2	7	
Douglas	2	1	0	2	1	0	0	4	0	2	12	
Gilliam	0	0	0	0	0	0	0	0	0	0	0	
Grant	0	0	0	0	0	0	0	0	0	0	0	
Harney	0	0	0	0	0	0	0	0	0	1	1	
Hood River	0	0	0	0	1	0	0	2	0	0	3	
Jackson	0	1	4	0	0	1	1	0	0	0	7	
Jefferson	0	0	0	0	1	0	1	0	0	0	2	
Josephine	0	0	1	0	0	1	1	0	0	1	4	
Klamath	0	0	0	0	0	0	4	0	1	1	6	
Lake	0	0	0	0	0	0	0	0	0	0	0	
Lane	1	0	0	1	1	3	4	4	4	3	21	
Lincoln	1	0	0	0	0	1	0	0	0	0	2	
Linn	1	0	0	0	0	1	0	0	1	0	3	
Malheur	1	0	0	1	0	0	0	0	0	0	2	
Marion	0	0	0	0	0	0	0	2	2	6	10	
Morrow	0	0	0	0	0	0	0	0	0	0	0	
Multnomah	1	3	5	7	6	1	0	0	3	4	30	
Polk	0	1	1	2	0	1	0	0	1	0	6	
Sherman	0	0	0	0	0	0	0	0	0	0	0	
Tillamook	0	0	0	0	0	0	0	0	0	0	0	
Umatilla	0	0	0	2	1	1	1	0	1	0	6	
Union	0	0	0	0	0	0	0	0	0	0	0	
Wallowa	0	0	0	0	0	0	0	0	0	0	0	
Wasco	0	0	0	0	1	0	0	0	0	0	1	
Washington	0	0	0	0	0	1	0	0	1	2	4	
Wheeler	0	0	0	0	0	0	0	0	0	0	0	
Yamhill	0	0	0	0	0	3	0	0	0	0	3	
Total	7	11	13	20	14	16	16	13	16	25	151	

Oregon Hepatitis C (chronic) Cases  
January-July

	Age Group in Years												Total
	00-04	05-09	10-14	15-19	20-24	25-29	30-39	40-49	50-59	60-69	70-79	80+	
2003	0	0	0	0	2	6	18	34	40	20	2	0	122
2004	0	0	0	0	4	6	20	58	62	14	0	0	164
2005	0	0	2	6	18	18	79	190	254	44	8	4	623
2006	28	2	2	32	124	268	968	2244	2222	350	126	48	6414
2007	36	2	10	58	170	306	1268	2644	2984	534	124	38	8174
2008	28	14	10	38	168	362	1052	2478	3026	610	136	42	7964
2009	10	2	10	64	196	330	973	2238	2964	766	142	62	7757
2010	2	1	6	21	70	110	352	829	1202	354	48	12	3007
2011	0	0	1	28	82	121	368	864	1235	470	51	17	3237
2012	0	3	1	23	109	149	359	658	1022	451	44	15	2834
Total	104	24	42	270	943	1676	5457	12237	15011	3613	681	238	40296

Baker	0	0	0	26	32	32	36	9	6	12	153
Benton	0	2	2	74	70	88	98	32	37	24	427
Clackamas	16	34	84	546	514	524	446	140	174	164	2642
Clatsop	0	2	20	138	92	82	80	34	39	34	521
Columbia	0	0	0	44	120	76	80	36	47	37	440
Coos	0	0	6	188	150	212	214	83	72	80	1005
Crook	0	0	26	4	10	10	14	12	8	15	99
Curry	0	0	0	32	58	66	70	30	24	20	300
Deschutes	0	0	8	222	192	260	236	85	123	112	1238
Douglas	6	58	36	336	292	314	230	113	145	85	1615
Gilliam	0	0	0	0	4	4	0	1	3	1	13
Grant	0	0	0	0	4	8	10	3	5	0	30
Harney	0	0	0	4	8	2	8	6	8	5	41
Hood River	0	4	2	8	14	16	16	4	4	12	80
Jackson	26	12	58	454	432	544	480	147	214	147	2514
Jefferson	4	2	0	32	10	52	62	19	31	38	250
Josephine	0	0	4	234	234	200	244	83	99	62	1160
Klamath	2	0	0	146	142	208	194	61	66	41	860
Lake	2	0	0	32	26	20	22	7	9	4	122
Lane	0	2	26	428	478	766	818	343	312	276	3449
Lincoln	0	2	4	132	126	140	117	39	48	55	663
Linn	0	0	4	204	226	248	320	115	118	102	1337
Malheur	0	0	12	150	184	136	156	55	49	41	783
Marion	0	2	67	760	836	692	670	322	298	252	3899
Morrow	0	0	0	14	12	10	0	0	8	4	48
Multnomah	54	42	226	1138	2548	2016	1942	775	848	802	10391
Polk	0	0	2	82	86	104	100	35	44	31	484
Sherman	0	0	0	4	0	2	2	1	0	2	11
State Of O	0	0	0	0	0	0	0	0	0	1	1
Tillamook	4	2	4	50	34	56	40	20	30	16	256
Umatilla	2	2	16	176	228	180	246	95	58	68	1071
Union	0	0	2	14	16	16	40	14	25	11	138
Wallowa	0	0	0	2	2	8	4	4	5	0	25
Wasco	0	0	0	48	88	42	38	16	14	18	264
Washington	6	0	10	656	764	742	640	225	214	183	3440
Wheeler	0	0	0	2	0	6	6	0	0	2	16
Yamhill	0	0	4	134	202	116	116	50	56	78	756
Total	122	166	623	6514	8234	7998	7795	3014	3241	2835	40542

	Sex			Total	
	F	M	U		
2003	0	48	70	4	122
2004	0	70	90	6	166
2005	0	253	366	4	623
2006	0	2374	3946	194	6514
2007	2	3108	5002	122	8234
2008	0	3270	4562	166	7998
2009	0	3015	4658	122	7795
2010	0	1148	1856	10	3014
2011	0	1229	2011	1	3241
2012	0	1020	1813	2	2835
Total	2	15535	24374	631	40542

	Race					Total
	A	B	N	W	U	
2003	0	0	2	36	84	122
2004	0	0	2	56	108	166
2005	4	18	2	144	455	623
2006	28	42	60	1380	5004	6514
2007	24	78	64	1716	6352	8234
2008	20	100	48	2204	5626	7998
2009	30	76	58	1771	5860	7795
2010	16	71	45	1018	1864	3014
2011	31	60	44	1428	1678	3241
2012	28	52	34	1146	1575	2835
Total	181	497	359	10899	28606	40542

Oregon HIV/AIDS Cases  
January-July

	Age Group in Years												Total
	00-04	05-09	10-14	15-19	20-24	25-29	30-39	40-49	50-59	60-69	70-79	80+	
2003	1	0	0	2	6	27	92	93	38	11	2	0	272
2004	0	0	0	1	3	31	83	80	34	10	2	1	245
2005	1	0	0	2	20	27	90	60	32	3	0	0	235
2006	0	0	0	6	16	26	68	57	30	4	2	0	209
2007	0	0	0	9	20	24	77	96	45	11	2	0	284
2008	1	0	0	2	15	35	65	64	28	9	2	0	221
2009	0	0	0	1	17	29	57	42	25	7	2	0	180
2010	0	0	0	4	24	19	48	28	25	8	4	0	160
2011	0	0	0	5	15	27	46	42	31	9	1	1	177
2012	1	0	1	2	15	24	41	52	22	9	1	0	168
Total	4	0	1	34	151	269	667	614	310	81	18	2	2151

	Sex			Total
	F	M	U	
2003	34	238	0	272
2004	41	204	0	245
2005	30	205	0	235
2006	24	185	0	209
2007	31	253	0	284
2008	39	182	0	221
2009	15	165	0	180
2010	24	136	0	160
2011	19	158	0	177
2012	22	146	0	168
Total	279	1872	0	2151

	Race					Total
	A	B	N	W	U	
2003	6	22	3	208	33	272
2004	5	23	6	178	33	245
2005	7	10	2	188	28	235
2006	4	12	2	149	42	209
2007	6	10	3	220	45	284
2008	6	17	4	155	39	221
2009	5	13	2	127	33	180
2010	6	14	2	104	34	160
2011	6	11	1	134	25	177
2012	2	15	1	114	36	168
Total	53	147	26	1577	348	2151

Baker	0	0	0	2	0	0	0	0	0	0	0	2
Benton	0	1	0	6	0	4	6	4	1	4	26	
Clackamas	14	12	10	13	22	11	15	16	16	15	144	
Clatsop	1	0	3	1	1	0	0	1	0	1	8	
Columbia	0	1	2	0	1	0	0	1	1	4	10	
Coos	3	1	1	0	1	2	0	1	0	2	11	
Crook	0	0	0	0	0	1	0	0	0	0	1	
Curry	2	1	0	1	2	1	0	3	0	0	10	
Deschutes	2	0	3	1	8	2	7	4	2	3	32	
Douglas	1	4	1	2	1	6	1	0	2	1	19	
Gilliam	0	0	0	0	0	0	0	0	0	0	0	
Grant	0	0	0	0	0	0	0	0	0	0	0	
Harney	0	0	0	0	0	0	0	0	0	0	0	
Hood River	0	2	1	0	3	0	1	1	0	0	8	
Jackson	6	11	5	7	8	9	7	7	4	8	72	
Jefferson	3	0	1	0	1	1	1	0	1	0	8	
Josephine	0	6	3	6	4	1	1	1	2	0	24	
Klamath	1	0	2	0	0	3	0	2	2	0	10	
Lake	0	0	0	0	0	0	0	0	0	0	0	
Lane	8	25	15	13	14	15	7	9	13	5	124	
Lincoln	4	3	3	2	2	1	3	2	1	0	21	
Linn	5	2	2	1	5	4	6	2	2	2	31	
Malheur	0	1	2	0	1	3	1	1	2	0	11	
Marion	11	9	10	10	19	16	10	15	9	8	117	
Morrow	0	0	0	1	0	0	0	0	1	0	2	
Multnomah	178	138	126	115	145	101	84	67	91	88	1133	
Polk	0	1	2	1	2	2	0	1	1	0	10	
Sherman	0	0	0	0	0	0	0	0	0	0	0	
Tillamook	1	2	0	0	0	3	0	0	1	1	8	
Umatilla	2	4	1	3	1	3	1	1	2	2	20	
Union	0	0	0	0	0	1	0	0	1	1	3	
Wallowa	1	0	0	0	0	0	0	1	0	0	2	
Wasco	1	1	0	1	2	2	0	2	1	1	11	
Washington	26	16	41	22	41	25	28	17	17	19	252	
Wheeler	0	0	0	0	0	0	0	0	1	0	1	
Yamhill	2	4	1	1	0	4	1	1	3	3	20	
Total	272	245	235	209	284	221	180	160	177	168	2151	

Oregon HUS Cases  
January-July

	Age Group in Years												Total
	00-04	05-09	10-14	15-19	20-24	25-29	30-39	40-49	50-59	60-69	70-79	80+	
2003	2	0	0	0	0	0	1	0	0	0	0	0	3
2004	2	2	0	0	0	0	0	0	0	0	0	0	4
2005	3	0	0	0	0	0	0	0	0	0	0	0	3
2006	1	0	1	1	0	0	0	0	0	0	0	0	3
2007	5	0	0	1	0	0	0	0	0	0	0	0	6
2008	2	1	0	1	0	0	0	0	0	0	0	0	4
2009	0	0	1	0	0	0	0	0	1	0	1	0	3
2010	3	0	1	0	0	0	0	0	0	0	0	0	4
2011	2	0	0	0	0	0	0	0	0	0	0	0	2
2012	3	0	3	0	0	0	0	0	1	0	0	0	7
Total	23	3	6	3	0	0	1	0	2	0	1	0	39

	Sex			Total
	F	M	U	
2003	3	0	0	3
2004	3	1	0	4
2005	3	0	0	3
2006	1	2	0	3
2007	3	3	0	6
2008	2	3	0	5
2009	3	0	0	3
2010	1	3	0	4
2011	0	2	0	2
2012	7	0	0	7
Total	26	14	0	40

	Race					Total
	A	B	N	W	U	
2003	0	0	0	2	1	3
2004	0	1	0	2	1	4
2005	0	0	0	3	0	3
2006	0	0	0	3	0	3
2007	0	0	0	5	1	6
2008	0	1	0	4	0	5
2009	0	0	0	2	1	3
2010	0	0	0	4	0	4
2011	0	0	0	2	0	2
2012	0	0	0	5	2	7
Total	0	2	0	32	6	40

Baker	0	0	0	0	1	0	0	0	0	0	0	0	1
Benton	0	0	0	0	0	0	0	0	0	0	0	0	0
Clackamas	0	1	0	1	0	0	0	0	0	0	1	3	
Clatsop	0	0	0	0	0	0	0	0	0	0	0	0	
Columbia	0	0	0	0	0	0	0	0	0	0	0	0	
Coos	0	0	0	0	1	0	1	0	0	0	0	2	
Crook	0	1	0	0	0	0	0	0	0	0	0	1	
Curry	0	0	0	0	0	0	0	0	0	0	0	0	
Deschutes	0	0	0	0	0	0	0	0	0	0	0	0	
Douglas	0	0	0	0	0	0	0	0	0	1	1	2	
Gilliam	0	0	0	0	0	0	0	0	0	0	0	0	
Grant	0	0	0	0	0	0	0	0	0	0	0	0	
Harney	0	0	0	0	0	0	0	0	0	0	0	0	
Hood River	0	0	0	0	0	0	0	0	0	0	0	0	
Jackson	0	0	0	0	1	0	0	0	0	0	0	1	
Jefferson	0	0	0	0	0	0	0	0	0	0	0	0	
Josephine	0	0	0	0	0	0	0	0	0	0	0	0	
Klamath	0	0	1	0	0	0	0	0	0	0	1	2	
Lake	0	0	0	0	0	0	0	0	0	0	0	0	
Lane	0	0	0	0	0	1	0	0	0	0	0	1	
Lincoln	0	0	0	0	0	0	1	0	0	0	0	1	
Linn	0	0	1	0	0	0	0	0	0	1	0	2	
Malheur	0	0	0	0	0	0	0	0	0	0	0	0	
Marion	1	0	1	0	1	1	0	0	0	0	1	5	
Morrow	0	0	0	0	1	0	0	0	0	0	0	1	
Multnomah	1	1	0	0	0	1	1	2	0	1	7		
Polk	0	0	0	0	0	0	0	0	0	0	0	0	
Sherman	0	0	0	0	1	0	0	0	0	0	0	1	
Tillamook	0	0	0	0	0	0	0	0	0	0	0	0	
Umatilla	1	0	0	0	0	1	0	0	0	0	0	2	
Union	0	1	0	0	0	0	0	0	0	0	0	1	
Wallowa	0	0	0	0	0	0	0	0	0	0	0	0	
Wasco	0	0	0	0	0	0	0	1	0	0	0	1	
Washington	0	0	0	1	1	1	0	1	0	2	6		
Wheeler	0	0	0	0	0	0	0	0	0	0	0	0	
Yamhill	0	0	0	0	0	0	0	0	0	0	0	0	
Total	3	4	3	3	6	5	3	4	2	7	40		

Oregon Legionellosis Cases  
January-July

	Age Group in Years												Total
	00-04	05-09	10-14	15-19	20-24	25-29	30-39	40-49	50-59	60-69	70-79	80+	
2003	0	0	0	0	0	0	2	1	1	0	1	1	6
2004	0	0	0	0	0	0	0	0	1	3	0	0	4
2005	0	0	0	0	0	0	1	1	2	1	1	0	6
2006	0	0	0	0	2	1	2	2	4	3	1	1	16
2007	0	0	0	0	0	0	1	0	1	1	2	0	5
2008	0	0	0	0	0	0	0	5	2	2	1	2	12
2009	0	0	0	0	0	0	1	0	3	3	0	0	7
2010	1	0	0	0	0	0	2	1	2	3	0	0	9
2011	0	0	0	0	0	0	0	2	1	4	0	1	8
2012	0	0	0	0	0	0	1	1	3	4	8	3	20
Total	1	0	0	0	2	1	10	13	20	24	14	8	93

	Sex			Total
	F	M	U	
2003	4	2	0	6
2004	0	4	0	4
2005	2	4	0	6
2006	6	10	0	16
2007	0	5	0	5
2008	3	9	0	12
2009	3	4	0	7
2010	5	4	0	9
2011	5	3	0	8
2012	6	14	0	20
Total	34	59	0	93

	Race					Total
	A	B	N	W	U	
2003	0	1	0	4	1	6
2004	0	0	0	4	0	4
2005	0	0	1	4	1	6
2006	0	1	0	13	2	16
2007	0	0	0	3	2	5
2008	0	1	0	9	2	12
2009	0	0	0	6	1	7
2010	0	0	0	9	0	9
2011	0	0	0	7	1	8
2012	0	0	0	14	6	20
Total	0	3	1	73	16	93

Baker	0	0	0	0	0	0	0	0	0	0	0	0	0
Benton	0	0	0	0	0	0	0	0	0	0	0	0	0
Clackamas	2	0	2	4	2	0	2	1	0	3	16		
Clatsop	0	0	0	0	0	1	0	0	0	0	1		
Columbia	0	1	0	0	0	0	0	0	0	1	2		
Coos	0	0	0	0	0	0	0	0	0	0	0		
Crook	0	0	0	0	0	0	0	0	0	0	0		
Curry	0	0	0	0	0	0	0	0	0	0	0		
Deschutes	0	0	0	1	0	0	0	1	0	1	3		
Douglas	0	0	0	1	0	0	0	0	0	0	1		
Gilliam	0	0	0	0	0	0	0	0	0	0	0		
Grant	0	0	0	0	0	0	0	0	0	0	0		
Harney	0	0	0	0	0	0	0	0	0	0	0		
Hood River	0	0	0	0	0	0	0	0	0	0	0		
Jackson	1	0	0	0	0	0	1	1	0	1	4		
Jefferson	0	0	0	0	0	0	0	0	0	0	0		
Josephine	0	0	0	0	0	0	0	0	0	0	1	1	
Klamath	0	0	0	0	0	0	0	0	0	0	0		
Lake	0	0	0	0	0	0	0	0	0	0	0		
Lane	0	0	0	3	0	2	0	2	2	4	13		
Lincoln	0	0	0	0	0	0	0	0	1	1	2		
Linn	0	0	0	0	0	0	0	0	0	0	0		
Malheur	0	0	0	0	0	0	0	1	0	0	1		
Marion	1	0	0	0	1	0	0	0	0	0	2		
Morrow	0	0	0	0	0	0	0	0	0	0	0		
Multnomah	1	2	2	6	2	5	2	2	2	3	27		
Polk	0	0	0	0	0	0	0	0	0	1	1		
Sherman	0	0	0	0	0	0	0	0	0	0	0		
Tillamook	0	0	0	0	0	0	0	0	0	0	0		
Umatilla	0	0	0	0	0	0	0	0	0	0	0		
Union	0	0	0	0	0	0	0	0	0	0	0		
Wallowa	0	0	0	0	0	1	0	0	0	1	2		
Wasco	0	0	0	0	0	1	0	1	0	1	3		
Washington	1	1	2	1	0	2	2	0	3	2	14		
Wheeler	0	0	0	0	0	0	0	0	0	0	0		
Yamhill	0	0	0	0	0	0	0	0	0	0	0		
Total	6	4	6	16	5	12	7	9	8	20	93		



Oregon Listeriosis Cases  
January-July

	Age Group in Years												Total
	00-04	05-09	10-14	15-19	20-24	25-29	30-39	40-49	50-59	60-69	70-79	80+	
2003	0	0	0	0	0	0	0	0	0	1	1	0	2
2004	2	0	0	0	0	0	1	0	0	0	2	0	5
2005	1	0	0	0	0	0	0	1	0	0	1	2	5
2006	0	0	0	0	0	0	0	0	4	0	1	2	7
2007	0	0	0	0	0	0	0	0	0	0	2	1	3
2008	0	0	0	0	0	0	1	0	0	0	0	1	2
2009	2	0	0	2	0	0	0	0	0	1	6	1	12
2010	2	0	0	0	1	1	1	0	0	1	0	1	7
2011	0	0	0	0	0	0	0	0	0	1	1	1	3
2012	0	0	0	1	1	0	1	1	4	1	2	2	13
Total	7	0	0	3	2	1	4	2	8	5	16	11	59

	Sex			Total
	F	M	U	
2003	1	1	0	2
2004	2	3	0	5
2005	4	1	0	5
2006	3	4	0	7
2007	2	1	0	3
2008	2	0	0	2
2009	8	4	0	12
2010	6	1	0	7
2011	2	1	0	3
2012	7	6	0	13
Total	37	22	0	59

	Race					Total
	A	B	N	W	U	
2003	0	0	0	2	0	2
2004	0	0	0	5	0	5
2005	0	0	0	5	0	5
2006	0	0	0	7	0	7
2007	0	0	0	2	1	3
2008	0	0	0	2	0	2
2009	0	0	0	9	3	12
2010	0	0	0	7	0	7
2011	0	0	0	3	0	3
2012	0	1	1	11	0	13
Total	0	1	1	53	4	59

Baker	0	0	0	0	0	0	0	0	0	0	0	0	0
Benton	0	0	0	0	0	0	0	0	0	0	0	0	0
Clackamas	0	3	1	1	1	0	2	3	0	3	14		
Clatsop	0	0	0	0	0	0	1	0	0	0	1		
Columbia	0	0	0	0	0	0	0	0	0	0	1	1	
Coos	0	0	1	0	0	0	0	0	0	0	0	1	
Crook	0	0	0	0	0	0	0	0	0	0	0	0	
Curry	0	0	0	0	0	0	0	0	0	0	0	0	
Deschutes	0	0	0	0	0	0	0	0	0	0	1	1	
Douglas	0	0	0	0	0	0	0	0	0	0	1	1	
Gilliam	0	0	0	0	0	0	0	0	0	0	0	0	
Grant	0	0	0	0	0	0	0	0	0	0	0	0	
Harney	0	0	0	0	0	0	0	0	0	0	0	0	
Hood River	0	0	0	0	0	0	0	0	0	0	0	0	
Jackson	0	0	0	0	0	0	0	0	0	0	0	0	
Jefferson	0	1	0	0	0	0	0	0	0	0	0	1	
Josephine	0	0	1	0	0	0	0	0	0	0	0	1	
Klamath	0	0	0	0	0	0	0	0	0	0	0	0	
Lake	0	0	0	0	0	0	0	0	0	0	0	0	
Lane	0	0	0	0	0	0	0	0	0	1	2	3	
Lincoln	0	0	0	0	0	0	2	0	1	0	3		
Linn	1	0	0	0	0	0	0	0	0	0	0	1	
Malheur	0	0	0	0	0	0	0	0	0	0	0	0	
Marion	0	0	1	4	0	0	1	0	0	0	6		
Morrow	0	0	0	0	0	0	0	0	0	0	0	0	
Multnomah	0	1	0	1	0	0	6	1	0	2	11		
Polk	1	0	0	0	0	0	0	0	0	0	0	1	
Sherman	0	0	0	0	0	0	0	0	0	0	0	0	
Tillamook	0	0	0	0	0	0	0	0	1	0	1		
Umatilla	0	0	0	0	0	0	0	0	0	0	0	0	
Union	0	0	0	0	0	0	0	0	0	0	1	1	
Wallowa	0	0	0	0	0	0	0	0	0	0	0	0	
Wasco	0	0	0	0	1	0	0	0	0	0	0	1	
Washington	0	0	1	1	1	2	0	3	0	2	10		
Wheeler	0	0	0	0	0	0	0	0	0	0	0	0	
Yamhill	0	0	0	0	0	0	0	0	0	0	0	0	
Total	2	5	5	7	3	2	12	7	3	13	59		

Oregon Lyme disease Cases  
January-July

	Age Group in Years												Total
	00-04	05-09	10-14	15-19	20-24	25-29	30-39	40-49	50-59	60-69	70-79	80+	
2003	0	0	1	0	2	1	1	1	1	2	1	0	10
2004	0	2	3	0	2	1	2	4	2	3	0	0	19
2005	1	2	0	0	1	0	0	4	6	2	0	1	17
2006	0	0	0	0	0	1	1	2	1	3	0	1	9
2007	1	1	1	0	0	2	4	5	4	1	0	0	19
2008	0	1	1	2	0	1	1	4	6	3	1	0	20
2009	1	2	0	1	1	3	4	8	2	5	1	0	28
2010	0	1	1	0	1	3	5	4	3	2	2	0	22
2011	2	0	0	0	3	0	3	3	2	3	1	0	17
2012	1	1	0	4	0	3	6	10	4	10	0	0	39
Total	6	10	7	7	10	15	27	45	31	34	6	2	200

	Sex			Total
	F	M	U	
2003	6	4	0	10
2004	13	6	0	19
2005	11	6	0	17
2006	2	7	0	9
2007	14	5	0	19
2008	12	8	0	20
2009	20	8	0	28
2010	14	8	0	22
2011	7	10	0	17
2012	29	10	0	39
Total	128	72	0	200

	Race					Total
	A	B	N	W	U	
2003	0	0	0	6	4	10
2004	0	0	0	19	0	19
2005	0	0	0	16	1	17
2006	0	0	0	8	1	9
2007	0	1	0	14	4	19
2008	0	0	0	18	2	20
2009	1	0	0	22	5	28
2010	0	0	0	17	5	22
2011	0	0	1	10	6	17
2012	0	0	0	28	11	39
Total	1	1	1	158	39	200

Baker	0	0	0	0	0	0	0	0	0	0	0	0	0
Benton	2	1	1	2	1	1	0	5	0	4	17		
Clackamas	1	1	1	0	2	1	0	0	1	1	8		
Clatsop	0	0	0	0	0	0	0	0	0	0	0		
Columbia	0	0	0	1	0	0	0	1	0	0	2		
Coos	0	0	0	0	1	0	0	1	0	0	2		
Crook	0	0	0	0	0	0	0	0	0	0	0		
Curry	0	0	0	0	0	0	1	0	0	1	2		
Deschutes	0	0	1	0	0	1	1	0	0	1	4		
Douglas	1	4	0	0	1	0	0	2	2	9	19		
Gilliam	0	1	0	0	0	0	0	0	0	0	1		
Grant	0	0	0	0	0	0	0	0	0	0	0		
Harney	0	0	0	0	0	0	0	0	0	0	0		
Hood River	0	0	2	0	3	0	2	0	0	1	8		
Jackson	1	1	3	1	4	3	5	1	5	3	27		
Jefferson	0	0	0	0	0	0	0	0	0	0	0		
Josephine	0	5	3	0	2	3	2	1	2	10	28		
Klamath	0	0	0	1	0	1	0	0	1	0	3		
Lake	0	0	0	1	0	0	0	0	0	0	1		
Lane	0	1	0	1	0	1	5	1	2	1	12		
Lincoln	0	0	0	0	0	1	0	0	0	0	1		
Linn	0	1	0	0	0	0	0	2	1	0	4		
Malheur	0	0	0	0	1	0	0	0	0	0	1		
Marion	1	1	0	0	1	1	0	0	0	0	4		
Morrow	0	0	0	0	0	0	0	0	0	0	0		
Multnomah	3	2	2	2	2	4	6	5	2	5	33		
Polk	0	0	1	0	0	1	0	1	0	0	3		
Sherman	0	0	0	0	0	0	0	0	0	0	0		
Tillamook	0	0	1	0	1	0	0	0	0	0	2		
Umatilla	0	0	0	0	0	0	1	0	0	0	1		
Union	0	0	0	0	0	1	1	1	1	1	4		
Wallowa	0	0	0	0	0	0	0	0	0	0	0		
Wasco	0	0	0	0	0	1	0	0	0	1	2		
Washington	1	1	1	0	0	0	2	1	0	2	8		
Wheeler	0	0	0	0	0	0	0	0	0	0	0		
Yamhill	0	0	1	0	0	0	2	0	0	0	3		
Total	10	19	17	9	19	20	28	22	17	39	200		

Oregon Malaria Cases  
January-July

	Age Group in Years												Total
	00-04	05-09	10-14	15-19	20-24	25-29	30-39	40-49	50-59	60-69	70-79	80+	
2003	0	1	1	0	1	0	2	0	1	0	0	0	6
2004	0	0	0	2	1	1	3	4	1	0	0	0	12
2005	0	0	0	0	2	0	1	2	1	1	0	0	7
2006	2	0	0	0	1	0	0	1	2	1	0	0	7
2007	0	2	0	0	1	3	1	2	0	2	0	0	11
2008	0	0	0	0	0	0	3	1	0	0	0	0	4
2009	0	0	0	1	0	1	3	1	1	1	0	0	8
2010	0	0	0	0	1	2	3	0	0	1	0	0	7
2011	0	0	0	2	1	1	1	0	2	0	0	0	7
2012	0	0	0	1	2	1	1	1	1	1	0	0	8
Total	2	3	1	6	10	9	18	12	9	7	0	0	77

	Sex			Total
	F	M	U	
2003	1	5	0	6
2004	7	4	1	12
2005	3	4	0	7
2006	2	5	0	7
2007	4	7	0	11
2008	1	3	0	4
2009	2	6	0	8
2010	2	5	0	7
2011	4	3	0	7
2012	5	3	0	8
Total	31	45	1	77

	Race					Total
	A	B	N	W	U	
2003	0	1	0	5	0	6
2004	0	4	0	6	2	12
2005	1	1	0	5	0	7
2006	1	2	0	2	2	7
2007	1	4	0	6	0	11
2008	0	2	0	2	0	4
2009	0	1	0	7	0	8
2010	0	1	0	5	1	7
2011	1	1	0	3	2	7
2012	0	1	0	7	0	8
Total	4	18	0	48	7	77

Baker	0	0	0	0	0	0	0	0	0	0	0	0	0
Benton	0	0	0	1	1	0	0	0	0	0	1	3	
Clackamas	1	0	0	1	0	0	1	0	0	0	0	3	
Clatsop	0	0	0	0	0	0	0	0	0	0	0	0	
Columbia	0	0	0	0	0	0	0	0	0	0	0	0	
Coos	1	0	0	0	0	0	0	0	0	0	0	1	
Crook	0	0	0	0	0	0	0	0	0	0	1	1	
Curry	0	0	0	0	0	0	0	0	0	0	0	0	
Deschutes	0	1	0	1	0	1	0	0	0	0	0	3	
Douglas	0	0	1	0	0	0	0	0	0	0	0	1	
Gilliam	0	0	0	0	0	0	0	0	0	0	0	0	
Grant	0	0	0	0	0	0	0	0	0	0	0	0	
Harney	0	0	0	0	0	0	0	0	0	0	0	0	
Hood River	1	0	0	0	0	0	0	0	0	0	0	1	
Jackson	1	0	0	0	0	0	0	0	0	0	0	1	
Jefferson	0	0	0	0	0	0	0	0	0	0	0	0	
Josephine	0	0	0	0	0	0	1	0	0	0	0	1	
Klamath	0	0	0	0	0	0	0	0	0	0	0	0	
Lake	0	0	0	0	0	0	0	0	0	0	0	0	
Lane	1	1	0	0	0	0	1	0	1	1	1	5	
Lincoln	0	0	0	0	0	0	0	0	0	0	0	0	
Linn	0	0	1	0	0	0	0	0	0	0	0	1	
Malheur	0	0	0	0	0	0	0	0	0	0	0	0	
Marion	0	2	0	0	2	0	0	2	1	1	1	8	
Morrow	0	0	0	0	0	0	0	0	0	0	0	0	
Multnomah	1	3	3	1	7	3	4	1	5	2	2	30	
Polk	0	0	1	0	0	0	0	0	0	0	0	1	
Sherman	0	0	0	0	0	0	0	0	0	0	0	0	
Tillamook	0	0	0	0	0	0	0	0	0	0	0	0	
Umatilla	0	0	0	0	0	0	0	0	0	0	0	0	
Union	0	0	0	0	0	0	0	0	0	0	0	0	
Wallowa	0	0	0	0	0	0	0	0	0	0	0	0	
Wasco	0	0	0	0	0	0	0	0	0	0	0	0	
Washington	0	4	1	3	1	0	1	3	0	2	15		
Wheeler	0	0	0	0	0	0	0	0	0	0	0	0	
Yamhill	0	1	0	0	0	0	0	1	0	0	2		
Total	6	12	7	7	11	4	8	7	7	8	77		

Oregon Meningococcal Disease Cases  
January-July

	Age Group in Years												Total
	00-04	05-09	10-14	15-19	20-24	25-29	30-39	40-49	50-59	60-69	70-79	80+	
2003	9	1	1	4	3	1	2	3	3	3	2	2	34
2004	14	6	2	4	5	3	1	3	1	2	1	2	44
2005	8	1	1	9	7	0	1	2	3	0	1	1	34
2006	4	0	0	5	8	1	1	3	3	1	2	1	29
2007	7	2	1	2	0	3	0	0	1	1	1	6	24
2008	11	0	0	2	0	0	0	3	1	1	4	2	24
2009	9	2	1	2	2	0	3	3	0	1	0	3	26
2010	9	0	3	3	4	0	2	0	0	2	0	0	23
2011	8	1	1	1	4	0	1	1	1	2	2	2	24
2012	6	1	0	2	2	0	2	1	2	1	2	0	19
Total	85	14	10	34	35	8	13	19	15	14	15	19	281

	Sex			Total
	F	M	U	
2003	18	16	0	34
2004	19	25	0	44
2005	19	15	0	34
2006	16	13	0	29
2007	13	11	0	24
2008	15	8	1	24
2009	10	16	0	26
2010	5	18	0	23
2011	14	10	0	24
2012	9	10	0	19
Total	138	142	1	281

	Race					Total
	A	B	N	W	U	
2003	1	0	1	28	4	34
2004	0	1	1	38	4	44
2005	1	3	1	26	3	34
2006	0	0	0	26	3	29
2007	0	0	1	21	2	24
2008	0	1	0	22	1	24
2009	0	1	0	21	4	26
2010	0	2	2	17	2	23
2011	0	0	0	23	1	24
2012	0	1	0	15	3	19
Total	2	9	6	237	27	281

Baker	1	0	0	0	0	0	0	0	0	0	0	0	1
Benton	0	2	1	1	0	0	0	1	0	0	1	0	5
Clackamas	2	3	2	0	0	1	3	0	0	1	0	1	12
Clatsop	0	0	0	1	0	2	0	0	1	1	1	5	
Columbia	0	1	1	0	0	0	0	0	0	0	0	2	
Coos	0	1	2	1	3	0	1	1	1	1	1	11	
Crook	0	1	0	0	0	0	0	0	3	2	6		
Curry	0	0	0	0	0	0	0	0	0	1	1		
Deschutes	1	2	0	1	2	1	1	2	5	1	16		
Douglas	3	6	3	5	0	2	0	7	1	1	28		
Gilliam	0	0	0	0	0	0	0	0	0	0	0		
Grant	0	0	0	0	0	0	0	0	0	0	0		
Harney	0	0	0	0	0	0	0	0	0	0	0		
Hood River	0	0	0	0	0	0	0	0	0	0	0		
Jackson	3	3	5	2	1	1	1	2	2	0	20		
Jefferson	0	0	1	0	0	0	0	0	0	0	1		
Josephine	0	2	2	0	0	2	1	2	0	1	10		
Klamath	2	2	2	1	0	1	0	0	0	0	8		
Lake	0	0	0	0	0	0	0	0	0	0	0		
Lane	3	4	4	0	3	1	4	2	2	5	28		
Lincoln	0	1	0	0	2	4	0	0	0	0	7		
Linn	1	1	0	1	2	0	0	0	0	0	5		
Malheur	0	0	0	0	0	0	0	0	1	1	2		
Marion	4	4	1	3	2	2	0	2	1	0	19		
Morrow	0	1	0	0	0	0	0	0	0	0	1		
Multnomah	7	5	5	5	4	4	7	2	5	2	46		
Polk	1	1	1	2	0	0	0	1	0	0	6		
Sherman	0	0	0	0	0	0	0	0	0	0	0		
Tillamook	0	0	0	1	1	0	0	0	0	0	2		
Umatilla	0	0	0	0	1	1	0	0	0	0	2		
Union	1	0	0	0	0	0	0	0	0	0	1		
Wallowa	0	0	0	0	0	0	0	0	0	0	0		
Wasco	0	0	0	0	0	0	1	0	0	1	2		
Washington	4	4	4	2	0	1	3	1	2	1	22		
Wheeler	0	0	0	0	0	0	0	0	0	0	0		
Yamhill	1	0	0	3	3	1	4	0	0	0	12		
Total	34	44	34	29	24	24	26	23	24	19	281		

Oregon Pertussis Cases  
January-July

	Age Group in Years												Total
	00-04	05-09	10-14	15-19	20-24	25-29	30-39	40-49	50-59	60-69	70-79	80+	
2003	67	31	76	34	17	10	28	28	8	2	0	0	301
2004	32	18	81	54	8	7	24	20	17	1	1	0	263
2005	132	64	136	65	20	8	38	38	15	9	1	2	528
2006	24	3	5	14	6	3	6	11	3	0	2	0	77
2007	21	8	8	4	2	8	6	1	2	1	0	0	61
2008	41	21	18	4	2	2	4	4	1	1	0	0	98
2009	61	19	27	17	3	5	6	7	4	3	4	0	156
2010	49	32	30	13	2	3	7	7	5	3	1	0	152
2011	61	46	35	7	0	3	5	5	9	2	2	0	175
2012	153	91	200	48	11	7	20	31	6	6	3	0	576
Total	641	333	616	260	71	56	144	152	70	28	14	2	2387

	Sex			Total
	F	M	U	
2003	165	140	0	305
2004	143	126	1	270
2005	278	259	3	540
2006	44	33	2	79
2007	36	24	1	61
2008	47	51	0	98
2009	85	68	3	156
2010	82	70	0	152
2011	86	89	0	175
2012	290	286	0	576
Total	1256	1146	10	2412

	Race					Total
	A	B	N	W	U	
2003	1	9	4	239	52	305
2004	2	1	0	216	51	270
2005	21	2	5	441	71	540
2006	4	0	3	63	9	79
2007	1	2	1	49	8	61
2008	0	0	0	91	7	98
2009	0	2	2	124	28	156
2010	2	1	1	133	15	152
2011	0	2	1	155	17	175
2012	8	9	4	493	62	576
Total	39	28	21	2004	320	2412

Baker	0	0	0	0	0	0	0	0	0	0	0	0	0
Benton	2	141	45	0	1	0	10	1	3	10	213		
Clackamas	4	5	31	1	0	2	20	0	24	48	135		
Clatsop	0	0	9	0	0	9	1	0	9	18	46		
Columbia	0	6	0	0	0	1	1	3	2	7	20		
Coos	0	1	0	2	0	0	9	1	0	2	15		
Crook	0	0	1	1	0	0	0	0	0	0	2		
Curry	0	0	10	0	0	0	0	2	0	0	12		
Deschutes	0	1	19	0	0	0	3	4	1	3	31		
Douglas	4	20	0	0	0	0	19	1	2	0	46		
Gilliam	0	0	0	5	0	0	0	0	0	0	5		
Grant	0	0	0	0	0	0	0	0	0	0	0		
Harney	0	0	0	0	8	0	0	0	0	1	9		
Hood River	2	0	5	0	0	0	1	0	0	4	12		
Jackson	99	2	16	8	0	7	5	27	3	3	170		
Jefferson	0	0	0	0	0	0	0	0	1	1	2		
Josephine	1	4	9	0	0	1	6	12	3	2	38		
Klamath	23	2	4	9	0	2	0	0	2	0	42		
Lake	0	0	1	0	0	0	0	0	0	0	1		
Lane	124	38	111	11	1	14	15	32	36	16	398		
Lincoln	0	0	26	0	5	0	0	7	0	6	44		
Linn	2	15	19	1	13	1	12	1	0	6	70		
Malheur	0	0	0	0	0	0	0	0	0	9	9		
Marion	2	8	104	5	0	23	10	12	18	28	210		
Morrow	3	0	0	4	0	0	0	0	0	0	7		
Multnomah	28	8	63	15	16	22	27	33	61	164	437		
Polk	4	4	14	0	1	2	1	3	3	16	48		
Sherman	0	0	0	0	0	0	0	0	0	0	0		
Tillamook	0	0	0	0	0	0	0	2	0	0	2		
Umatilla	0	1	2	1	0	0	1	0	0	7	12		
Union	0	0	1	0	0	0	4	0	0	1	6		
Wallowa	0	0	1	0	0	1	0	0	0	0	2		
Wasco	0	1	3	1	0	0	0	0	1	2	8		
Washington	6	13	37	15	13	10	9	8	4	201	316		
Wheeler	0	0	0	0	0	0	0	0	0	0	0		
Yamhill	1	0	9	0	3	3	2	3	2	21	44		
Total	305	270	540	79	61	98	156	152	175	576	2412		

Oregon Salmonella Cases  
January-July

	Age Group in Years												Total
	00-04	05-09	10-14	15-19	20-24	25-29	30-39	40-49	50-59	60-69	70-79	80+	
2003	35	12	6	12	22	19	36	38	27	15	10	7	239
2004	30	21	13	20	20	19	28	32	26	11	14	16	250
2005	45	15	13	13	10	15	40	29	15	15	8	14	232
2006	40	12	13	10	20	22	27	28	26	18	10	5	231
2007	39	17	7	10	14	10	23	26	20	13	13	7	199
2008	47	21	11	14	17	15	26	26	25	24	9	7	242
2009	48	16	16	17	20	20	27	31	23	15	12	7	252
2010	46	20	19	12	24	23	37	43	47	25	15	12	323
2011	52	5	8	11	18	14	25	22	20	15	11	7	208
2012	36	7	6	11	20	14	33	23	20	22	9	8	209
Total	418	146	112	130	185	171	302	298	249	173	111	90	2385

	Sex			Total
	F	M	U	
2003	132	110	0	242
2004	137	115	0	252
2005	130	100	2	232
2006	131	100	0	231
2007	97	101	1	199
2008	127	115	0	242
2009	128	124	0	252
2010	174	149	0	323
2011	113	96	0	209
2012	114	95	0	209
Total	1283	1105	3	2391

	Race					Total
	A	B	N	W	U	
2003	6	1	1	215	19	242
2004	9	5	2	201	35	252
2005	12	2	4	184	30	232
2006	10	4	1	180	36	231
2007	3	3	1	172	20	199
2008	3	3	2	205	29	242
2009	14	7	4	195	32	252
2010	9	8	5	270	31	323
2011	6	3	3	178	19	209
2012	5	1	2	181	20	209
Total	77	37	25	1981	271	2391

Baker	29	2	0	1	1	0	1	0	1	1	36
Benton	5	1	6	5	9	6	6	6	3	2	49
Clackamas	23	52	22	14	18	22	21	19	28	26	245
Clatsop	2	0	4	3	1	0	1	3	0	3	17
Columbia	1	2	2	2	0	1	1	0	2	0	11
Coos	1	4	4	2	5	6	4	4	1	2	33
Crook	1	4	2	2	1	1	0	0	2	1	14
Curry	0	0	0	1	0	1	3	2	1	0	8
Deschutes	11	5	9	9	10	7	6	12	11	6	86
Douglas	5	5	6	6	8	9	5	82	4	9	139
Gilliam	0	0	0	0	0	0	0	0	0	0	0
Grant	0	0	0	0	0	0	0	0	0	0	0
Harney	0	1	1	0	0	1	1	0	0	1	5
Hood River	1	0	0	1	1	0	1	3	2	1	10
Jackson	11	18	14	6	22	14	21	17	6	8	137
Jefferson	0	1	0	1	0	2	0	2	5	0	11
Josephine	2	3	4	4	3	6	4	8	1	3	38
Klamath	1	1	2	4	3	3	4	8	7	5	38
Lake	0	0	0	0	1	1	1	1	0	0	4
Lane	31	24	22	15	13	17	18	25	24	25	214
Lincoln	3	4	4	2	1	1	2	2	1	2	22
Linn	7	9	5	14	7	12	10	6	9	9	88
Malheur	2	2	0	1	4	4	0	3	0	3	19
Marion	13	18	21	26	16	19	25	26	18	19	201
Morrow	4	0	2	1	0	1	0	0	1	1	10
Multnomah	37	35	44	48	39	39	61	53	44	36	436
Polk	3	2	4	3	2	5	4	1	4	5	33
Sherman	0	0	0	0	0	0	0	1	0	1	2
Tillamook	1	1	0	1	0	0	0	3	0	1	7
Umatilla	7	6	8	5	3	7	5	1	4	3	49
Union	3	3	1	2	1	2	1	1	2	1	17
Wallowa	0	0	0	0	0	0	0	0	1	0	1
Wasco	0	0	3	5	3	2	4	3	1	2	23
Washington	33	38	35	35	25	47	36	27	21	25	322
Wheeler	0	0	0	0	0	0	0	0	0	0	0
Yamhill	5	11	7	12	2	6	6	4	5	8	66
Total	242	252	232	231	199	242	252	323	209	209	2391

Oregon Shigella Cases  
January-July

	Age Group in Years												Total
	00-04	05-09	10-14	15-19	20-24	25-29	30-39	40-49	50-59	60-69	70-79	80+	
2003	43	35	6	5	4	6	16	9	3	1	1	0	129
2004	7	5	1	2	1	2	7	8	0	2	2	0	37
2005	11	5	2	2	3	3	9	15	17	3	2	0	72
2006	7	5	3	3	3	5	9	13	12	9	5	2	76
2007	7	2	1	3	3	2	9	6	8	0	2	0	43
2008	7	5	2	1	2	4	7	3	2	4	1	0	38
2009	8	6	1	1	3	3	5	2	2	1	0	0	32
2010	2	8	0	0	0	4	4	3	5	4	0	0	30
2011	8	1	0	3	2	4	2	3	2	2	0	1	28
2012	4	6	1	3	2	3	9	5	5	4	1	1	44
Total	104	78	17	23	23	36	77	67	56	30	14	4	529

	Sex			Total
	F	M	U	
2003	70	59	0	129
2004	17	20	0	37
2005	38	34	0	72
2006	40	38	0	78
2007	22	21	0	43
2008	15	24	0	39
2009	15	17	0	32
2010	13	18	0	31
2011	18	10	0	28
2012	14	30	0	44
Total	262	271	0	533

	Race					Total
	A	B	N	W	U	
2003	1	1	1	93	33	129
2004	6	1	0	23	7	37
2005	0	1	0	47	24	72
2006	1	1	0	67	9	78
2007	2	2	0	33	6	43
2008	0	1	2	30	6	39
2009	4	0	1	24	3	32
2010	1	2	2	24	2	31
2011	1	1	1	20	5	28
2012	0	2	0	28	14	44
Total	16	12	7	389	109	533

Baker	0	0	0	0	0	0	0	0	0	0	0	0	0
Benton	0	0	2	2	0	1	2	0	1	0	0	8	
Clackamas	13	3	0	0	2	0	2	1	3	1	25		
Clatsop	0	2	1	0	0	0	0	0	0	0	3		
Columbia	0	4	0	0	0	0	0	0	0	0	4		
Coos	0	0	0	1	0	0	0	0	0	2	3		
Crook	0	0	0	0	0	0	0	0	0	0	0		
Curry	0	0	0	0	0	0	0	0	0	0	0		
Deschutes	1	2	0	0	2	1	4	1	0	0	11		
Douglas	0	0	22	0	0	0	0	0	0	0	22		
Gilliam	0	0	0	0	0	0	0	0	0	0	0		
Grant	0	0	0	0	0	0	0	0	0	0	0		
Harney	0	0	0	0	0	0	0	0	1	0	1		
Hood River	0	1	0	2	1	1	4	1	0	0	10		
Jackson	6	2	2	0	3	0	1	1	1	1	17		
Jefferson	1	1	0	0	0	0	1	3	0	0	6		
Josephine	0	0	0	2	0	1	0	0	0	0	3		
Klamath	0	0	1	1	0	2	0	0	0	0	4		
Lake	0	0	0	0	0	0	0	0	0	0	0		
Lane	4	2	2	1	3	2	2	5	7	4	32		
Lincoln	0	0	1	0	0	0	0	1	1	1	4		
Linn	1	0	4	1	1	0	1	0	1	0	9		
Malheur	0	0	1	1	0	0	0	0	0	0	2		
Marion	68	1	13	11	1	5	8	8	0	5	120		
Morrow	0	0	0	0	2	0	0	0	0	0	2		
Multnomah	13	15	11	13	18	12	5	4	9	22	122		
Polk	0	0	1	0	1	4	0	0	0	0	6		
Sherman	0	0	0	0	0	0	0	0	0	0	0		
Tillamook	0	0	0	0	0	0	0	0	0	0	0		
Umatilla	4	0	1	0	0	3	0	0	0	0	8		
Union	0	0	1	0	0	2	0	0	1	2	6		
Wallowa	0	1	0	0	0	0	0	0	0	0	1		
Wasco	0	0	1	2	0	0	0	0	0	0	3		
Washington	18	2	8	7	8	5	2	5	3	6	64		
Wheeler	0	0	0	0	0	0	0	0	0	0	0		
Yamhill	0	1	0	34	1	0	0	1	0	0	37		
Total	129	37	72	78	43	39	32	31	28	44	533		

Oregon Syphilis Cases  
January-July

	Age Group in Years												Total
	00-04	05-09	10-14	15-19	20-24	25-29	30-39	40-49	50-59	60-69	70-79	80+	
2003	0	0	0	7	6	4	15	7	4	4	0	0	47
2004	0	0	0	0	5	6	14	16	2	1	0	0	44
2005	0	0	0	1	8	0	5	5	2	1	1	0	23
2006	0	0	0	0	4	3	5	4	5	1	0	0	22
2007	0	0	0	0	0	2	6	4	2	0	0	0	14
2008	0	0	1	0	2	2	3	2	0	0	0	0	10
2009	0	0	0	1	5	3	19	11	9	0	0	0	48
2010	0	0	0	1	7	5	15	15	5	2	0	0	50
2011	0	0	0	2	12	11	28	19	14	3	1	0	90
2012	0	0	0	1	12	20	52	43	30	6	0	1	165
Total	0	0	1	13	61	56	162	126	73	18	2	1	513

	Sex			Total
	F	M	U	
2003	11	36	0	47
2004	6	38	0	44
2005	3	20	0	23
2006	1	21	0	22
2007	2	12	0	14
2008	0	10	0	10
2009	1	47	0	48
2010	1	49	0	50
2011	0	90	0	90
2012	5	160	0	165
Total	30	483	0	513

	Race					Total
	A	B	N	W	U	
2003	5	4	0	38	0	47
2004	2	1	1	36	4	44
2005	1	1	1	20	0	23
2006	1	1	0	19	1	22
2007	0	0	0	14	0	14
2008	1	0	1	8	0	10
2009	2	1	1	38	6	48
2010	2	2	2	39	5	50
2011	2	3	0	78	7	90
2012	2	13	1	131	18	165
Total	18	26	7	421	41	513

Baker	0	0	0	0	0	0	0	1	0	0	0	1
Benton	0	0	0	0	0	0	0	0	1	0	0	1
Clackamas	1	2	3	0	0	1	4	6	1	12	30	
Clatsop	0	0	0	0	0	1	0	0	0	1	2	
Columbia	0	0	0	0	0	0	0	0	2	0	2	
Coos	3	0	0	0	0	0	0	0	0	0	3	
Crook	0	0	0	0	0	0	0	0	2	1	3	
Curry	0	0	0	0	0	0	0	0	0	0	0	
Deschutes	0	1	1	0	0	0	0	3	0	1	6	
Douglas	0	0	0	0	0	1	0	1	0	1	3	
Gilliam	0	0	0	0	0	0	0	0	0	0	0	
Grant	0	0	0	0	0	0	0	0	0	1	1	
Harney	0	0	0	0	0	0	0	0	0	0	0	
Hood River	0	0	0	0	0	0	0	0	0	0	0	
Jackson	0	3	2	2	0	0	0	0	0	0	7	
Jefferson	0	0	0	2	0	0	0	0	0	0	2	
Josephine	0	0	1	0	0	0	0	0	1	0	2	
Klamath	0	1	0	0	0	0	0	0	0	0	1	
Lake	0	0	0	0	0	0	0	0	0	0	0	
Lane	0	0	1	4	1	0	4	1	2	2	15	
Lincoln	1	0	0	0	0	0	0	0	0	0	1	
Linn	0	0	0	0	1	0	0	0	1	1	3	
Malheur	0	4	0	0	0	0	1	0	1	0	6	
Marion	3	1	2	0	0	1	2	5	4	3	21	
Morrow	0	0	0	0	0	0	0	0	0	0	0	
Multnomah	30	31	12	11	10	5	30	28	62	120	339	
Polk	0	0	0	0	0	0	0	0	1	1	2	
Sherman	0	0	0	0	0	0	0	0	0	0	0	
Tillamook	2	0	0	0	0	0	0	0	0	0	2	
Umatilla	0	0	0	0	0	0	1	0	0	0	1	
Union	0	0	0	0	0	0	0	0	0	0	0	
Wallowa	0	0	0	0	0	0	0	0	0	0	0	
Wasco	0	0	0	0	0	0	0	0	0	0	0	
Washington	7	1	1	3	0	1	5	5	13	19	55	
Wheeler	0	0	0	0	0	0	0	0	0	0	0	
Yamhill	0	0	0	0	2	0	0	0	0	2	4	
Total	47	44	23	22	14	10	48	50	90	165	513	



Oregon Tuberculosis Cases  
January-July

	Age Group in Years												Total
	00-04	05-09	10-14	15-19	20-24	25-29	30-39	40-49	50-59	60-69	70-79	80+	
2003	0	0	0	0	0	0	0	0	0	0	0	0	0
2004	0	0	0	0	0	0	0	0	0	0	0	0	0
2005	0	0	0	0	0	0	0	0	0	0	0	0	0
2006	0	0	0	0	0	0	0	0	0	0	0	0	0
2007	0	0	0	0	0	0	0	0	0	0	0	0	0
2008	0	0	0	0	0	0	0	0	0	0	0	0	0
2009	0	0	0	0	0	0	1	0	0	0	0	0	1
2010	2	0	1	0	4	5	10	7	10	9	1	1	50
2011	0	0	1	5	1	7	8	7	8	3	1	4	45
2012	0	0	0	0	2	2	5	7	7	4	2	0	29
Total	2	0	2	5	7	14	24	21	25	16	4	5	125

	Sex			Total
	F	M	U	
2003	0	0	0	0
2004	0	0	0	0
2005	0	0	0	0
2006	0	0	0	0
2007	0	0	0	0
2008	0	0	0	0
2009	1	0	0	1
2010	25	25	0	50
2011	24	21	0	45
2012	11	18	0	29
Total	61	64	0	125

	Race					Total
	A	B	N	W	U	
2003	0	0	0	0	0	0
2004	0	0	0	0	0	0
2005	0	0	0	0	0	0
2006	0	0	0	0	0	0
2007	0	0	0	0	0	0
2008	0	0	0	0	0	0
2009	0	0	1	0	0	1
2010	15	7	4	22	2	50
2011	14	6	4	18	3	45
2012	8	1	5	13	2	29
Total	37	14	14	53	7	125

Baker	0	0	0	0	0	0	0	0	0	0	0	0	0
Benton	0	0	0	0	0	0	0	0	0	0	0	2	2
Clackamas	0	0	0	0	0	0	0	5	2	2	2	9	
Clatsop	0	0	0	0	0	0	0	0	0	0	0	0	
Columbia	0	0	0	0	0	0	0	0	0	0	0	0	
Coos	0	0	0	0	0	0	0	0	0	1	1	2	
Crook	0	0	0	0	0	0	0	0	0	0	0	0	
Curry	0	0	0	0	0	0	0	0	0	0	0	0	
Deschutes	0	0	0	0	0	0	0	0	0	0	0	0	
Douglas	0	0	0	0	0	0	0	1	0	0	0	1	
Gilliam	0	0	0	0	0	0	0	0	0	0	0	0	
Grant	0	0	0	0	0	0	0	0	0	0	0	0	
Harney	0	0	0	0	0	0	0	0	0	0	0	0	
Hood River	0	0	0	0	0	0	0	1	0	0	0	1	
Jackson	0	0	0	0	0	0	0	1	1	0	0	2	
Jefferson	0	0	0	0	0	0	0	0	0	0	1	1	
Josephine	0	0	0	0	0	0	0	0	0	1	0	1	
Klamath	0	0	0	0	0	0	0	0	0	0	0	0	
Lake	0	0	0	0	0	0	0	0	0	0	0	0	
Lane	0	0	0	0	0	0	0	5	1	1	1	7	
Lincoln	0	0	0	0	0	0	0	0	0	1	0	1	
Linn	0	0	0	0	0	0	0	0	0	0	1	1	
Malheur	0	0	0	0	0	0	0	0	0	1	0	1	
Marion	0	0	0	0	0	0	0	3	6	3	3	12	
Morrow	0	0	0	0	0	0	0	0	0	0	0	0	
Multnomah	0	0	0	0	0	0	0	20	19	11	11	50	
Polk	0	0	0	0	0	0	0	1	2	1	1	4	
Sherman	0	0	0	0	0	0	0	0	0	0	0	0	
Tillamook	0	0	0	0	0	0	0	0	0	0	0	0	
Umatilla	0	0	0	0	0	0	0	2	0	0	0	2	
Union	0	0	0	0	0	0	0	0	0	0	0	0	
Wallowa	0	0	0	0	0	0	0	0	0	0	0	0	
Wasco	0	0	0	0	0	0	0	1	0	0	0	1	
Washington	0	0	0	0	0	0	0	1	10	10	5	26	
Wheeler	0	0	0	0	0	0	0	0	0	0	0	0	
Yamhill	0	0	0	0	0	0	0	0	0	0	1	1	
Total	0	0	0	0	0	0	0	1	50	45	29	125	

Oregon Vibrio parahaemolytic Cases  
January-July

	Age Group in Years												Total
	00-04	05-09	10-14	15-19	20-24	25-29	30-39	40-49	50-59	60-69	70-79	80+	
2003	0	0	0	0	0	0	1	1	1	0	0	0	3
2004	0	0	0	1	1	2	2	1	2	0	0	0	9
2005	0	0	0	0	0	0	1	0	0	1	1	1	4
2006	0	0	0	0	1	2	5	3	4	3	0	0	18
2007	0	0	0	0	0	1	0	0	0	0	0	0	1
2008	0	0	0	0	0	1	0	0	1	0	0	0	2
2009	0	0	0	1	0	0	1	1	2	0	0	0	5
2010	0	0	0	0	1	1	1	2	0	0	0	0	5
2011	0	0	0	0	0	0	0	1	0	1	0	0	2
2012	0	0	0	0	0	0	3	1	1	0	0	0	5
Total	0	0	0	2	3	7	14	10	11	5	1	1	54

	Sex			Total
	F	M	U	
2003	1	2	0	3
2004	1	8	0	9
2005	2	2	0	4
2006	7	11	0	18
2007	0	1	0	1
2008	0	2	0	2
2009	1	4	0	5
2010	1	4	0	5
2011	0	2	0	2
2012	0	5	0	5
Total	13	41	0	54

	Race					Total
	A	B	N	W	U	
2003	0	0	0	3	0	3
2004	0	1	0	8	0	9
2005	0	0	0	4	0	4
2006	0	0	0	15	3	18
2007	0	0	0	1	0	1
2008	1	0	0	0	1	2
2009	0	0	0	4	1	5
2010	0	0	0	4	1	5
2011	0	0	0	2	0	2
2012	0	1	0	4	0	5
Total	1	2	0	45	6	54

Baker	0	0	0	0	0	0	0	0	0	0	0	0	0
Benton	1	0	0	1	0	1	0	0	0	0	0	0	3
Clackamas	0	0	0	2	0	0	2	0	1	0	0	5	
Clatsop	0	0	0	0	0	1	0	0	1	0	0	2	
Columbia	0	0	0	0	0	0	0	0	0	0	0	0	
Coos	1	0	0	0	0	0	0	0	0	0	0	1	
Crook	0	0	0	0	0	0	0	2	0	0	0	2	
Curry	0	0	0	0	0	0	0	0	0	0	0	0	
Deschutes	0	1	1	1	0	0	1	0	0	0	0	4	
Douglas	0	0	0	0	0	0	0	0	0	0	0	0	
Gilliam	0	0	0	0	0	0	0	0	0	0	0	0	
Grant	0	0	0	0	0	0	0	0	0	0	0	0	
Harney	0	0	0	0	0	0	0	0	0	0	0	0	
Hood River	0	0	0	0	0	0	0	0	0	0	0	0	
Jackson	0	0	0	1	0	0	0	0	0	0	0	1	
Jefferson	0	0	0	0	0	0	0	0	0	0	0	0	
Josephine	0	0	1	0	0	0	0	0	0	0	0	1	
Klamath	0	3	0	0	0	0	0	0	0	0	0	3	
Lake	0	0	0	0	0	0	0	0	0	0	0	0	
Lane	0	1	1	7	0	0	0	0	0	0	0	9	
Lincoln	0	0	0	0	0	0	0	0	0	0	0	0	
Linn	0	0	0	1	0	0	0	0	0	0	0	1	
Malheur	0	0	0	0	0	0	0	0	0	0	0	0	
Marion	0	0	0	0	0	0	1	0	0	0	0	1	
Morrow	0	0	0	0	0	0	0	0	0	0	0	0	
Multnomah	1	4	0	4	1	0	1	1	0	4	16		
Polk	0	0	0	0	0	0	0	0	0	0	0	0	
Sherman	0	0	0	0	0	0	0	0	0	0	0	0	
Tillamook	0	0	0	0	0	0	0	0	0	0	0	0	
Umatilla	0	0	0	0	0	0	0	0	0	0	0	0	
Union	0	0	0	0	0	0	0	0	0	0	0	0	
Wallowa	0	0	0	0	0	0	0	0	0	0	0	0	
Wasco	0	0	0	0	0	0	0	0	0	0	0	0	
Washington	0	0	1	1	0	0	0	1	0	1	4		
Wheeler	0	0	0	0	0	0	0	0	0	0	0	0	
Yamhill	0	0	0	0	0	0	0	1	0	0	1		
Total	3	9	4	18	1	2	5	5	2	5	54		

Oregon West Nile Cases  
January-July

	Age Group in Years												Total
	00-04	05-09	10-14	15-19	20-24	25-29	30-39	40-49	50-59	60-69	70-79	80+	
2003	0	0	0	0	0	0	1	1	0	0	0	0	2
2004	0	0	0	0	0	0	0	0	0	0	0	0	0
2005	0	0	0	0	0	0	1	2	0	0	0	0	3
2006	0	0	0	2	0	0	3	3	3	3	0	0	14
2007	0	0	0	1	1	1	0	1	2	1	1	0	8
2008	0	0	0	1	0	0	0	1	0	1	1	0	4
2009	0	0	0	1	0	0	0	0	0	0	0	0	1
2010	0	0	0	0	0	0	0	0	0	0	0	0	0
2011	0	0	0	0	0	0	0	0	0	0	0	0	0
2012	0	0	0	0	0	0	0	0	0	0	0	0	0
Total	0	0	0	5	1	1	5	8	5	5	2	0	32

	Sex			Total
	F	M	U	
2003	1	1	0	2
2004	0	0	0	0
2005	2	1	0	3
2006	8	6	0	14
2007	4	4	0	8
2008	2	2	0	4
2009	0	1	0	1
2010	0	0	0	0
2011	0	0	0	0
2012	0	0	0	0
Total	17	15	0	32

	Race					Total
	A	B	N	W	U	
2003	0	0	0	2	0	2
2004	0	0	0	0	0	0
2005	0	0	0	2	1	3
2006	0	0	0	14	0	14
2007	0	0	0	8	0	8
2008	0	0	0	4	0	4
2009	0	0	0	0	1	1
2010	0	0	0	0	0	0
2011	0	0	0	0	0	0
2012	0	0	0	0	0	0
Total	0	0	0	30	2	32

Baker	0	0	0	0	0	0	0	0	0	0	0	0	0
Benton	0	0	1	0	0	0	0	0	0	0	0	0	1
Clackamas	0	0	0	0	0	0	0	0	0	0	0	0	0
Clatsop	0	0	0	0	0	0	0	0	0	0	0	0	0
Columbia	0	0	0	0	0	0	0	0	0	0	0	0	0
Coos	0	0	0	0	0	0	0	0	0	0	0	0	0
Crook	0	0	0	0	0	0	0	0	0	0	0	0	0
Curry	0	0	0	0	0	0	0	0	0	0	0	0	0
Deschutes	1	0	0	0	0	0	0	0	0	0	0	0	1
Douglas	0	0	0	1	0	0	0	0	0	0	0	0	1
Gilliam	0	0	0	0	0	0	0	0	0	0	0	0	0
Grant	0	0	0	0	0	0	0	0	0	0	0	0	0
Harney	0	0	0	1	0	0	0	0	0	0	0	0	1
Hood River	0	0	0	0	0	0	0	0	0	0	0	0	0
Jackson	0	0	0	0	0	0	0	0	0	0	0	0	0
Jefferson	0	0	0	0	0	0	0	0	0	0	0	0	0
Josephine	0	0	0	0	0	0	0	0	0	0	0	0	0
Klamath	0	0	0	0	0	0	0	0	0	0	0	0	0
Lake	0	0	0	0	0	0	0	0	0	0	0	0	0
Lane	0	0	0	0	0	0	0	0	0	0	0	0	0
Lincoln	0	0	0	0	0	0	0	0	0	0	0	0	0
Linn	0	0	0	0	0	0	0	0	0	0	0	0	0
Malheur	0	0	1	12	5	4	0	0	0	0	0	0	22
Marion	0	0	1	0	0	0	0	0	0	0	0	0	1
Morrow	0	0	0	0	0	0	0	0	0	0	0	0	0
Multnomah	0	0	0	0	0	0	1	0	0	0	0	0	1
Polk	0	0	0	0	1	0	0	0	0	0	0	0	1
Sherman	0	0	0	0	0	0	0	0	0	0	0	0	0
Tillamook	0	0	0	0	0	0	0	0	0	0	0	0	0
Umatilla	0	0	0	0	0	0	0	0	0	0	0	0	0
Union	0	0	0	0	2	0	0	0	0	0	0	0	2
Wallowa	0	0	0	0	0	0	0	0	0	0	0	0	0
Wasco	1	0	0	0	0	0	0	0	0	0	0	0	1
Washington	0	0	0	0	0	0	0	0	0	0	0	0	0
Wheeler	0	0	0	0	0	0	0	0	0	0	0	0	0
Yamhill	0	0	0	0	0	0	0	0	0	0	0	0	0
Total	2	0	3	14	8	4	1	0	0	0	0	0	32

Oregon Yersinia Cases  
January-July

	Age Group in Years												Total
	00-04	05-09	10-14	15-19	20-24	25-29	30-39	40-49	50-59	60-69	70-79	80+	
2003	1	0	1	0	0	0	0	0	1	0	0	0	3
2004	1	0	0	0	3	0	1	0	3	0	0	0	8
2005	0	1	0	0	0	0	2	5	1	2	0	0	11
2006	4	3	0	0	0	2	0	1	0	3	0	0	13
2007	6	0	0	1	0	0	0	0	2	0	2	2	13
2008	5	0	1	1	0	0	1	2	0	1	0	0	11
2009	1	1	1	0	1	1	1	3	1	1	0	0	11
2010	2	3	0	0	0	1	1	1	0	3	1	0	12
2011	3	0	0	1	0	1	0	2	3	3	1	0	14
2012	5	0	1	0	2	0	1	0	4	1	3	0	17
Total	28	8	4	3	6	5	7	14	15	14	7	2	113

	Sex			Total
	F	M	U	
2003	1	2	0	3
2004	7	1	0	8
2005	7	4	0	11
2006	4	9	0	13
2007	3	10	0	13
2008	4	7	0	11
2009	7	4	0	11
2010	6	6	0	12
2011	5	9	0	14
2012	7	10	0	17
Total	51	62	0	113

	Race					Total
	A	B	N	W	U	
2003	0	0	0	3	0	3
2004	1	0	0	7	0	8
2005	2	0	0	9	0	11
2006	1	0	0	12	0	13
2007	1	0	0	10	2	13
2008	2	0	0	8	1	11
2009	2	0	0	9	0	11
2010	1	0	0	8	3	12
2011	1	0	0	13	0	14
2012	1	0	0	13	3	17
Total	12	0	0	92	9	113

Baker	1	0	0	0	0	0	0	0	0	0	0	0	1
Benton	0	0	0	0	0	0	0	0	0	0	0	0	0
Clackamas	1	1	0	1	4	7	3	3	1	3	1	3	24
Clatsop	0	0	0	0	0	0	0	1	0	0	0	0	1
Columbia	0	0	0	0	0	0	0	0	0	0	0	0	0
Coos	0	0	0	0	1	0	0	0	0	0	1	0	2
Crook	0	0	0	0	0	0	0	1	0	0	0	0	1
Curry	0	0	0	0	0	1	1	0	0	0	0	0	2
Deschutes	0	0	0	2	0	0	1	0	1	0	1	0	4
Douglas	0	0	0	0	0	0	0	0	0	0	0	0	0
Gilliam	0	0	0	0	0	0	0	0	0	0	0	0	0
Grant	0	0	0	0	0	0	0	0	0	0	0	0	0
Harney	0	0	0	0	0	0	0	0	0	0	0	0	0
Hood River	0	0	0	0	0	0	0	0	0	0	0	0	0
Jackson	0	1	0	0	0	0	0	1	0	2	0	0	4
Jefferson	0	0	0	0	0	0	0	0	0	0	0	0	0
Josephine	0	0	0	0	0	0	0	0	0	0	1	0	1
Klamath	0	0	0	2	0	0	0	0	0	0	0	0	2
Lake	0	0	0	0	0	0	0	0	0	0	0	0	0
Lane	0	2	1	1	4	0	2	0	1	0	0	0	11
Lincoln	0	0	0	0	0	0	0	0	0	0	0	0	0
Linn	0	0	0	1	0	0	0	0	1	0	0	0	2
Malheur	0	0	0	0	0	0	0	0	0	0	0	0	0
Marion	0	0	0	1	0	0	0	0	1	3	0	0	5
Morrow	0	0	0	0	0	0	0	0	0	0	0	0	0
Multnomah	0	4	6	3	2	2	1	1	3	3	0	0	25
Polk	0	0	0	0	0	0	0	0	0	0	0	0	0
Sherman	0	0	1	0	0	0	0	0	0	0	0	0	1
Tillamook	0	0	0	0	0	0	0	0	0	0	0	0	0
Umatilla	0	0	1	1	1	0	1	1	4	1	0	0	10
Union	1	0	0	1	0	0	0	0	0	0	0	0	2
Wallowa	0	0	0	0	0	0	0	0	0	0	0	0	0
Wasco	0	0	0	0	0	0	0	0	0	0	0	0	0
Washington	0	0	1	0	1	1	2	4	1	3	0	0	13
Wheeler	0	0	0	0	0	0	0	0	0	0	0	0	0
Yamhill	0	0	1	0	0	0	0	0	1	0	0	0	2
Total	3	8	11	13	13	11	11	12	14	17	0	0	113